



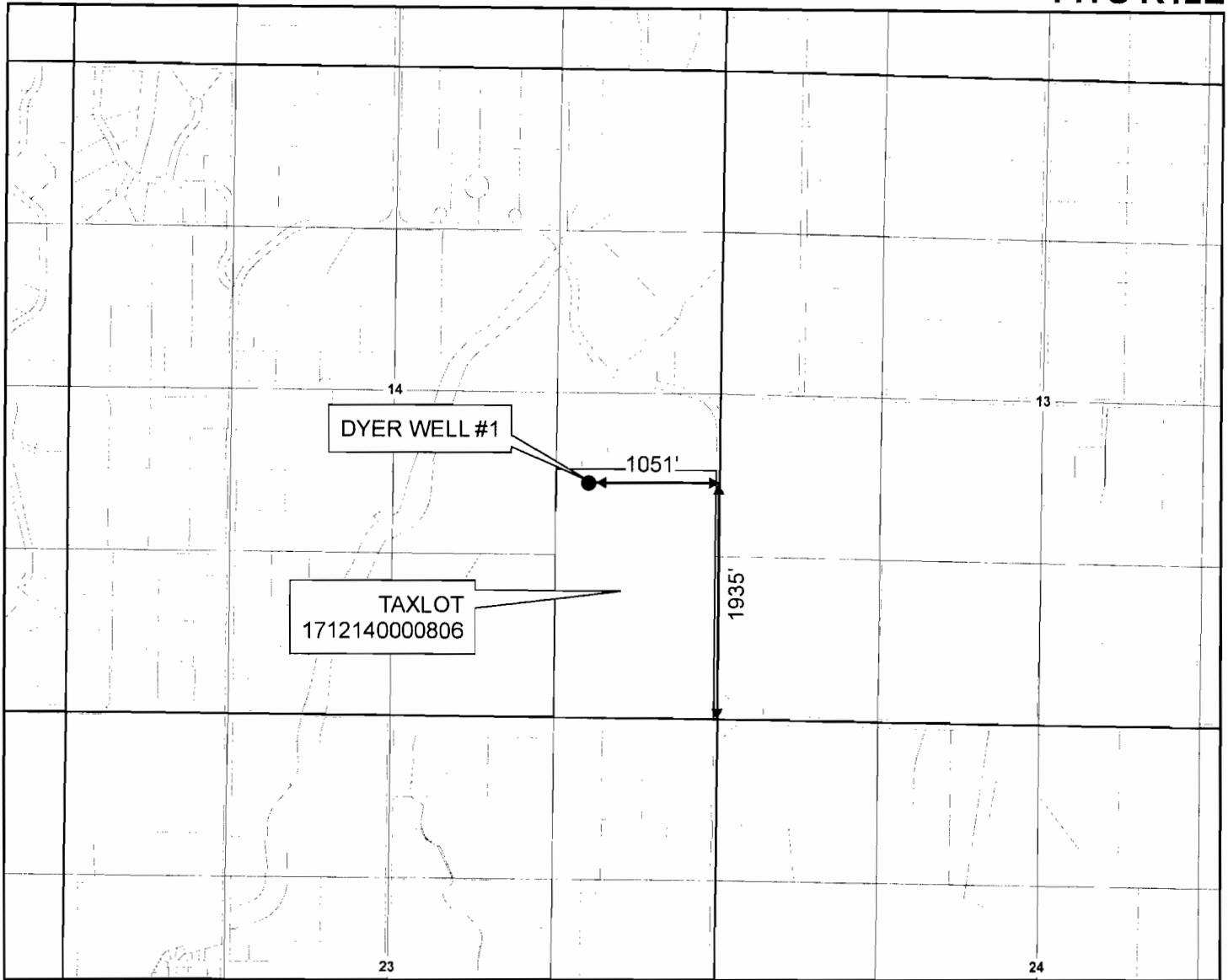
# AVION WATER CO, INC.

## PERMIT AMENDMENT - WELL LOCATION MAP

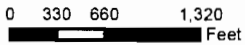
### Application G-10208, Permit G-9284

### Deschutes County

## T17S R12E



1 inch = 1,320 feet



DRAWN BY: TANNER LEMMON  
AVION WATER GIS DEPARTMENT  
OCTOBER, 2011

**DISCLAIMER:**  
This map was prepared for the purpose of identifying the location of water rights only and is not intended to provide legal dimensions or locations of property ownership lines.

### Legend

- POINT OF APPROPRIATION
- WELL SITE

### WELL DESCRIPTION

DYER WELL # 1 -  
NE 1/4, SE 1/4 of  
Section 14, T 17 S, R 12 E,  
WM - 1935' North and 1051'  
West from the SE corner of  
Section 14  
Taxlot - 1712140000806

### NOTES:

Base Layer:  
Deschutes County Taxlot Shapefile  
Projected Coordinate System :  
NAD 1983 StatePlane Oregon South  
Geographic Coordinate System :  
GCS North American 1983

RECEIVED

DEC 07 2011

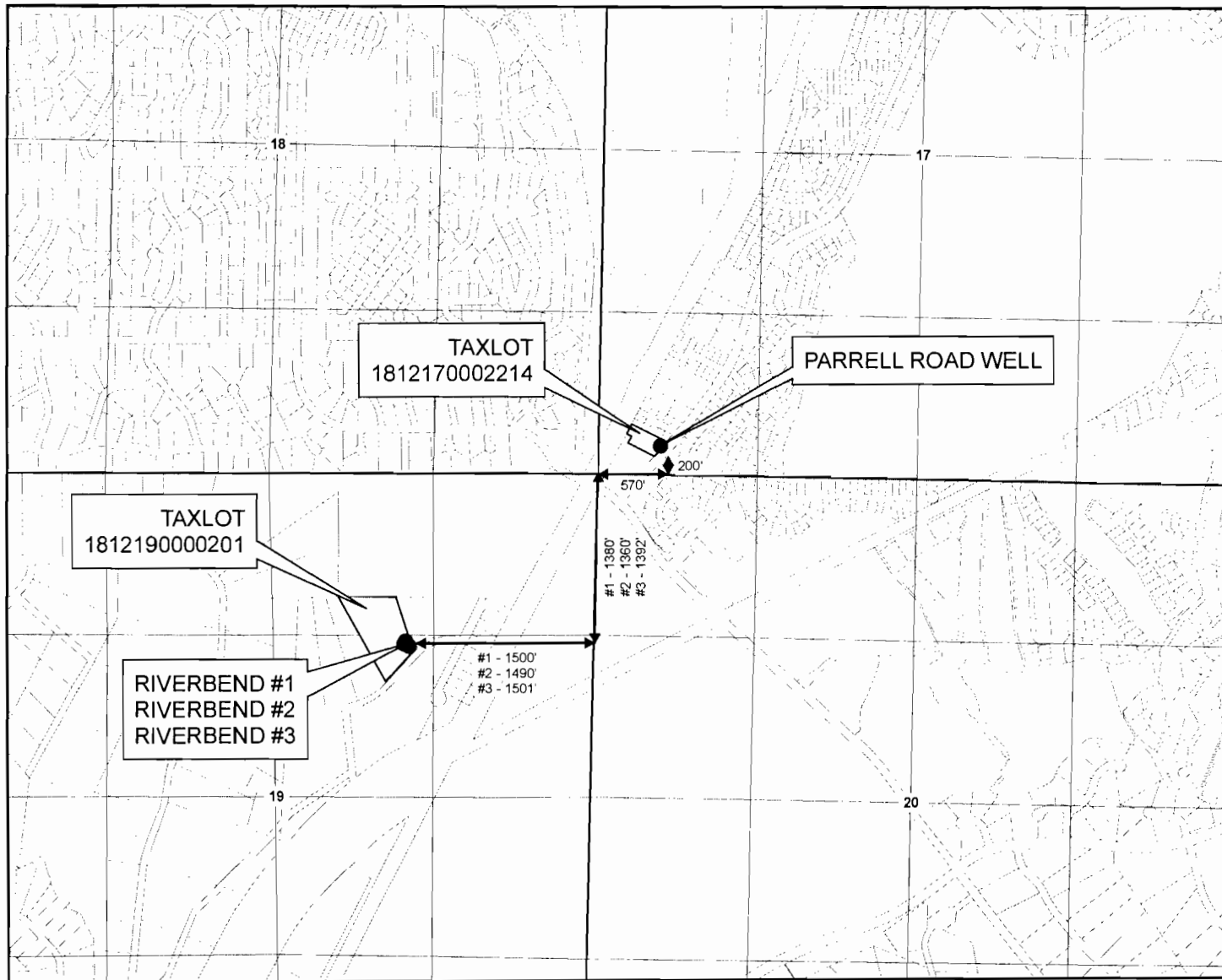
WATER RESOURCES DEPT  
SALEM, OREGON

T 11324

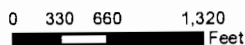


**AVION WATER CO, INC.**  
**PERMIT AMENDMENT - WELL LOCATION MAP**  
 Application G-10208, Permit G-9284  
 Deschutes County

**T18S R12E**



1 inch = 1,320 feet



DRAWN BY: TANNER LEMMON  
 AVION WATER GIS DEPARTMENT  
 OCTOBER, 2011

**DISCLAIMER:**  
 This map was prepared for the purpose of identifying the location of water rights only and is not intended to provide legal dimensions or locations of property ownership lines.

**Legend**

- POINTS OF APPROPRIATION
- WELL SITES

**WELL DESCRIPTION**

**PARRELL ROAD WELL -**  
 SW 1/4, SW 1/4 of  
 Section 17, T 18 S, R 12 E,  
 WM - 200' North and 570'  
 East from the SW corner of  
 Section 17  
 Taxlot - 1812170002214

**RIVERBEND #2 -**  
 SW 1/4, NE 1/4 of  
 Section 19, T 18 S, R 12 E,  
 WM - 1360' South and 1490'  
 West from the NE corner of  
 Section 19  
 Taxlot - 1812190000201

**RIVERBEND #1 -**  
 SW 1/4, NE 1/4 of  
 Section 19, T 18 S, R 12 E,  
 WM - 1380' South and 1500'  
 West from the NE corner of  
 Section 19  
 Taxlot - 1812190000201

**RIVERBEND #3 -**  
 SW 1/4, NE 1/4 of  
 Section 19, T 18 S, R 12 E,  
 WM - 1392' South and 1501'  
 West from the NE corner of  
 Section 19  
 Taxlot - 1812190000201

**NOTES:**

Base Layer:  
 Deschutes County Taxlot Shapefile  
 Projected Coordinate System :  
 NAD 1983 StatePlane Oregon South  
 Geographic Coordinate System :  
 GCS North American 1983

**RECEIVED**

DEC 07 2011

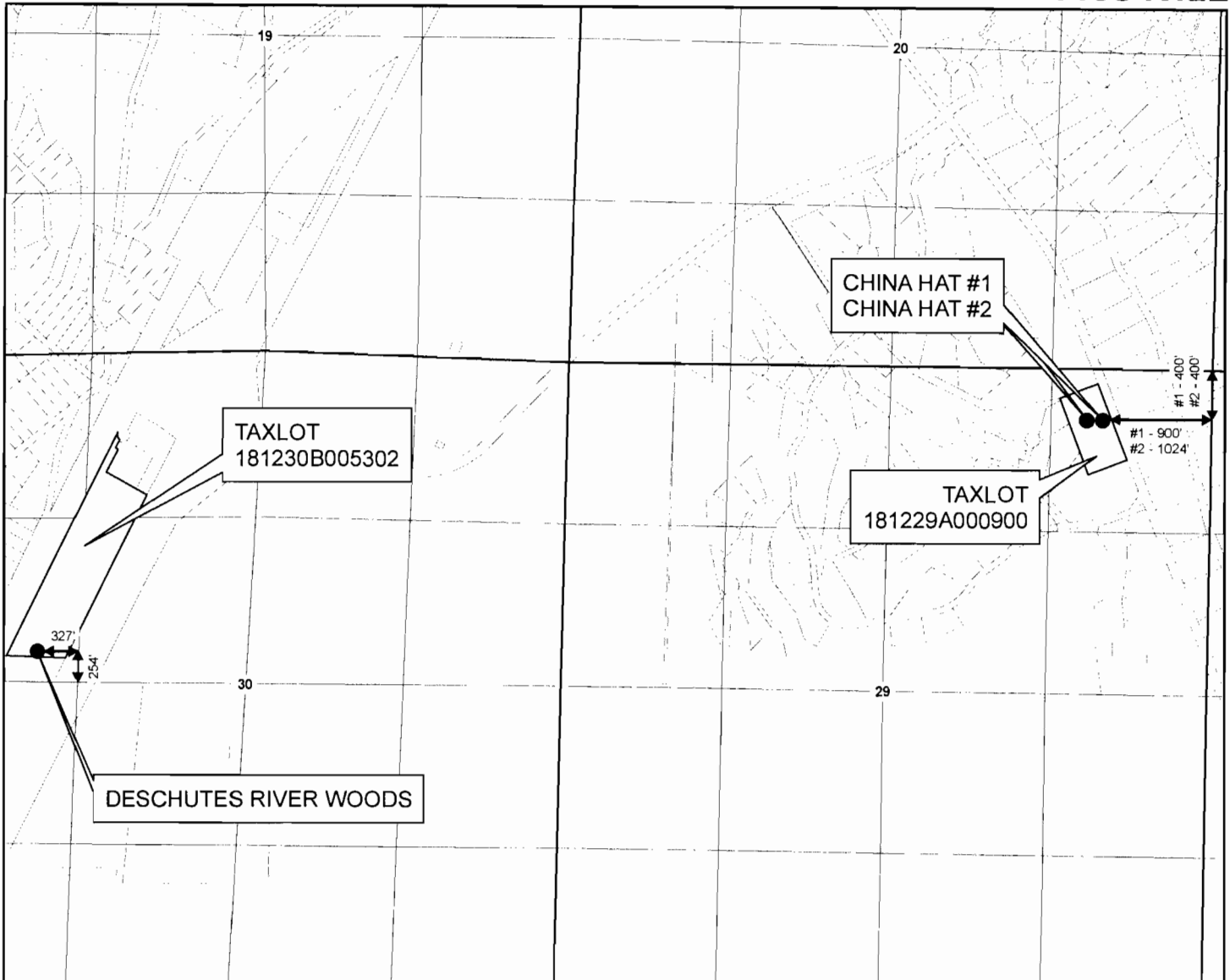
WATER RESOURCES DEPT  
 SALEM, OREGON

T 11324



**AVION WATER CO, INC.**  
**PERMIT AMENDMENT - WELL LOCATION MAP**  
 Application G-10208, Permit G-9284  
 Deschutes County

**T18S R12E**



1 inch = 1,320 feet  
 0 330 660 1,320  
 Feet

DRAWN BY: TANNER LEMMON  
 AVION WATER GIS DEPARTMENT  
 OCTOBER, 2011

**DISCLAIMER:**  
 This map was prepared for the purpose of identifying the location of water rights only and is not intended to provide legal dimensions or locations of property ownership lines.

**Legend**

- POINTS OF APPROPRIATION
- WELL SITES

**WELL DESCRIPTION**

**DESCHUTES RIVER WOODS -**  
 SW 1/4, NW 1/4 of  
 Section 30, T 18 S, R 12 E,  
 WM - 254' North and 327'  
 West from the SE corner of  
 SW 1/4, NW 1/4, Section 30  
 Taxlot - 181230B005302

**CHINA HAT #2 -**  
 NE 1/4, NE 1/4 of  
 Section 29, T 18 S, R 12 E,  
 WM - 400' South and 1024'  
 West from the NE corner of  
 Section 29  
 Taxlot - 181229A000900

**CHINA HAT WELL #1 -**  
 NE 1/4, NE 1/4 of  
 Section 29, T 18 S, R 12 E,  
 WM - 400' South and 900'  
 West from the NE corner of  
 Section 29  
 Taxlot - 181229A000900

**NOTES:**

Base Layer:  
 Deschutes County Taxlot Shapefile  
 Projected Coordinate System :  
 NAD 1983 StatePlane Oregon South  
 Geographic Coordinate System :  
 GCS North American 1983

**RECEIVED**

DEC 07 2011

WATER RESOURCES DEPT  
 SALEM, OREGON

T 11324

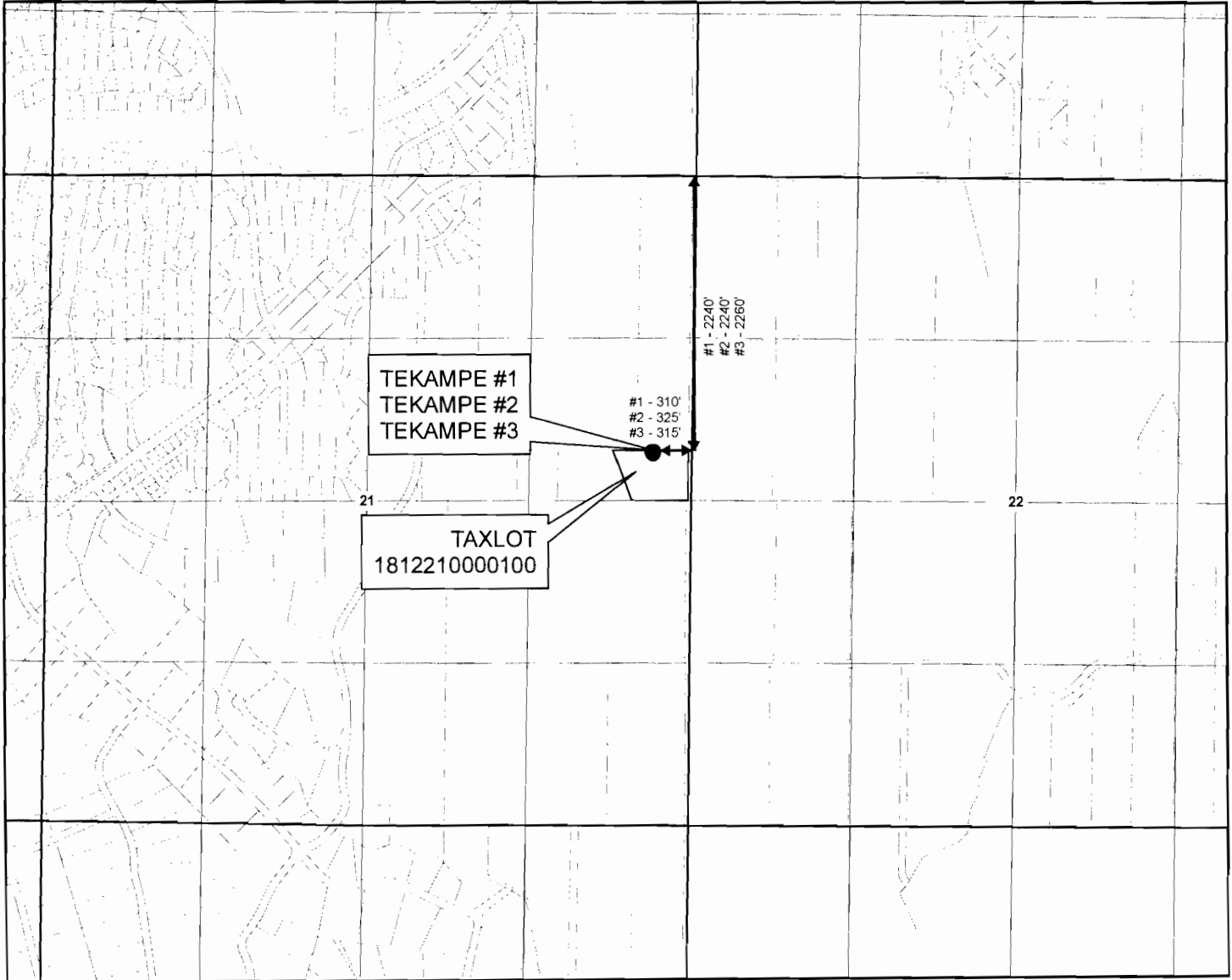


# AVION WATER CO, INC.

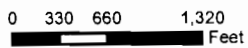
PERMIT AMENDMENT - WELL LOCATION MAP  
Application G-10208, Permit G-9284  
Deschutes County

4 of 7

T18S R12E



1 inch = 1,320 feet



DRAWN BY: TANNER LEMMON  
AVION WATER GIS DEPARTMENT  
OCTOBER, 2011

**DISCLAIMER:**

This map was prepared for the purpose of identifying the location of water rights only and is not intended to provide legal dimensions or locations of property ownership lines.

**Legend**

- POINTS OF APPROPRIATION
- WELL SITE

**WELL DESCRIPTION**

**TEKAMPE #1 -**  
SE 1/4, NE 1/4 of  
Section 21, T 18 S, R 12 E,  
WM - 2240' South and 310'  
West from the NE corner of  
Section 21  
Taxlot - 1812210000100

**TEKAMPE #2 -**  
SE 1/4, NE 1/4 of  
Section 21, T 18 S, R 12 E,  
WM - 2240' South and 325'  
West from the NE corner of  
Section 21  
Taxlot - 1812210000100

**TEKAMPE #3 -**  
SE 1/4, NE 1/4 of  
Section 21, T 18 S, R 12 E,  
WM - 2260' South and 315'  
West from the NE corner of  
Section 21  
Taxlot - 1812210000100

**NOTES:**

Base Layer:  
Deschutes County Taxlot Shapefile  
Projected Coordinate System :  
NAD 1983 StatePlane Oregon South  
Geographic Coordinate System :  
GCS North American 1983

RECEIVED

DEC 07 2011

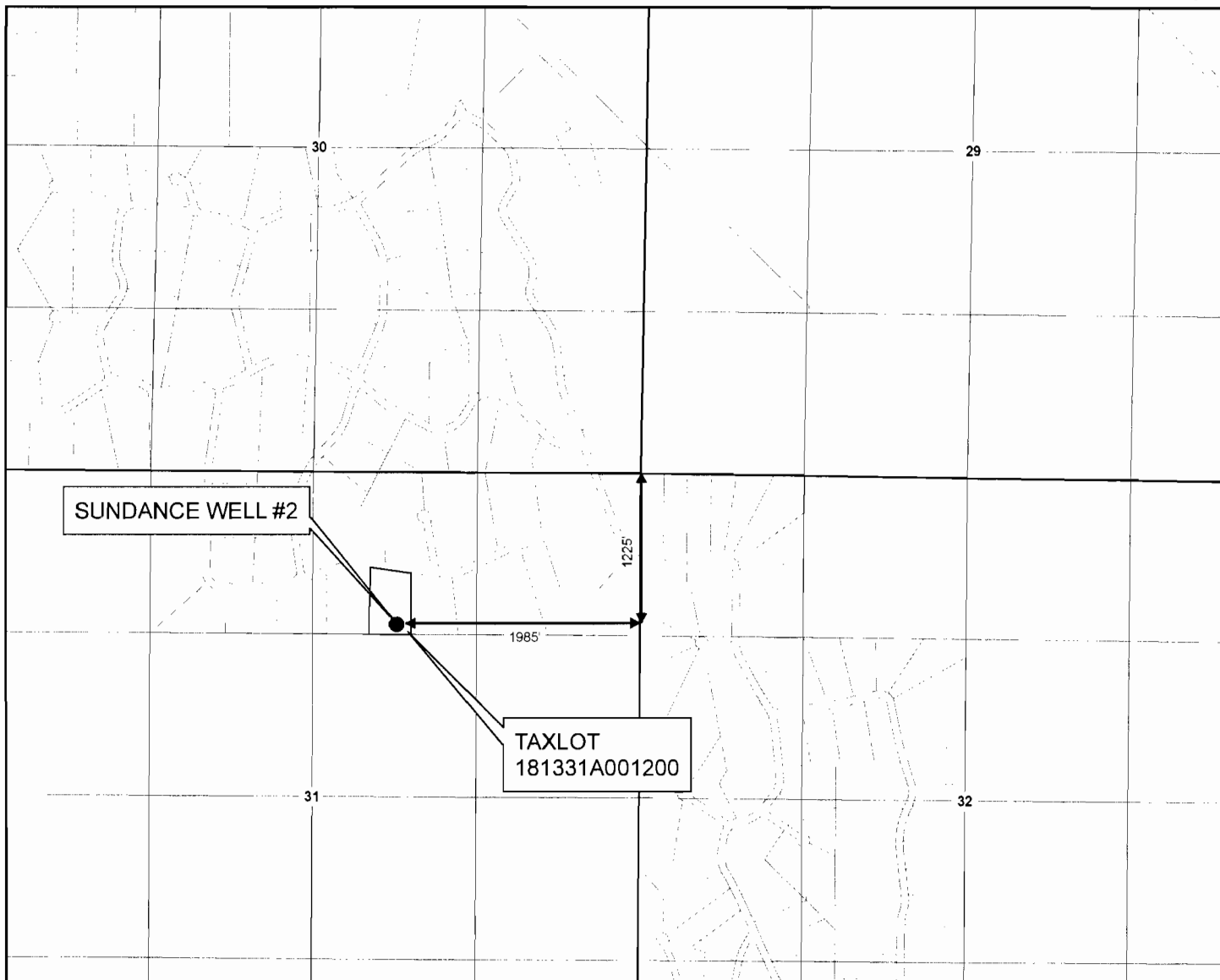
WATER RESOURCES DEPT  
SALEM, OREGON

T 11324

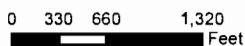


**AVION WATER CO, INC.**  
**PERMIT AMENDMENT - WELL LOCATION MAP**  
 Application G-10208, Permit G-9284  
 Deschutes County

**T18S R13E**



1 inch = 1,320 feet



DRAWN BY: TANNER LEMMON  
 AVION WATER GIS DEPARTMENT  
 OCTOBER, 2011

**DISCLAIMER:**  
 This map was prepared for the purpose of identifying the location of water rights only and is not intended to provide legal dimensions or locations of property ownership lines.

**Legend**

- POINT OF APPROPRIATION
- WELL SITE

**WELL DESCRIPTION**

SUNDANCE WELL #2 -  
 NW 1/4, NE 1/4 of  
 Section 31, T 18 S, R 13 E,  
 WM - 1225' South and 1985'  
 West from the NE corner of  
 Section 31  
 Taxlot - 181331A001200

**NOTES:**

Base Layer:  
 Deschutes County Taxlot Shapefile  
 Projected Coordinate System :  
 NAD 1983 StatePlane Oregon South  
 Geographic Coordinate System :  
 GCS North American 1983

**RECEIVED**

DEC 07 2011

WATER RESOURCES DEPT  
 SALEM, OREGON

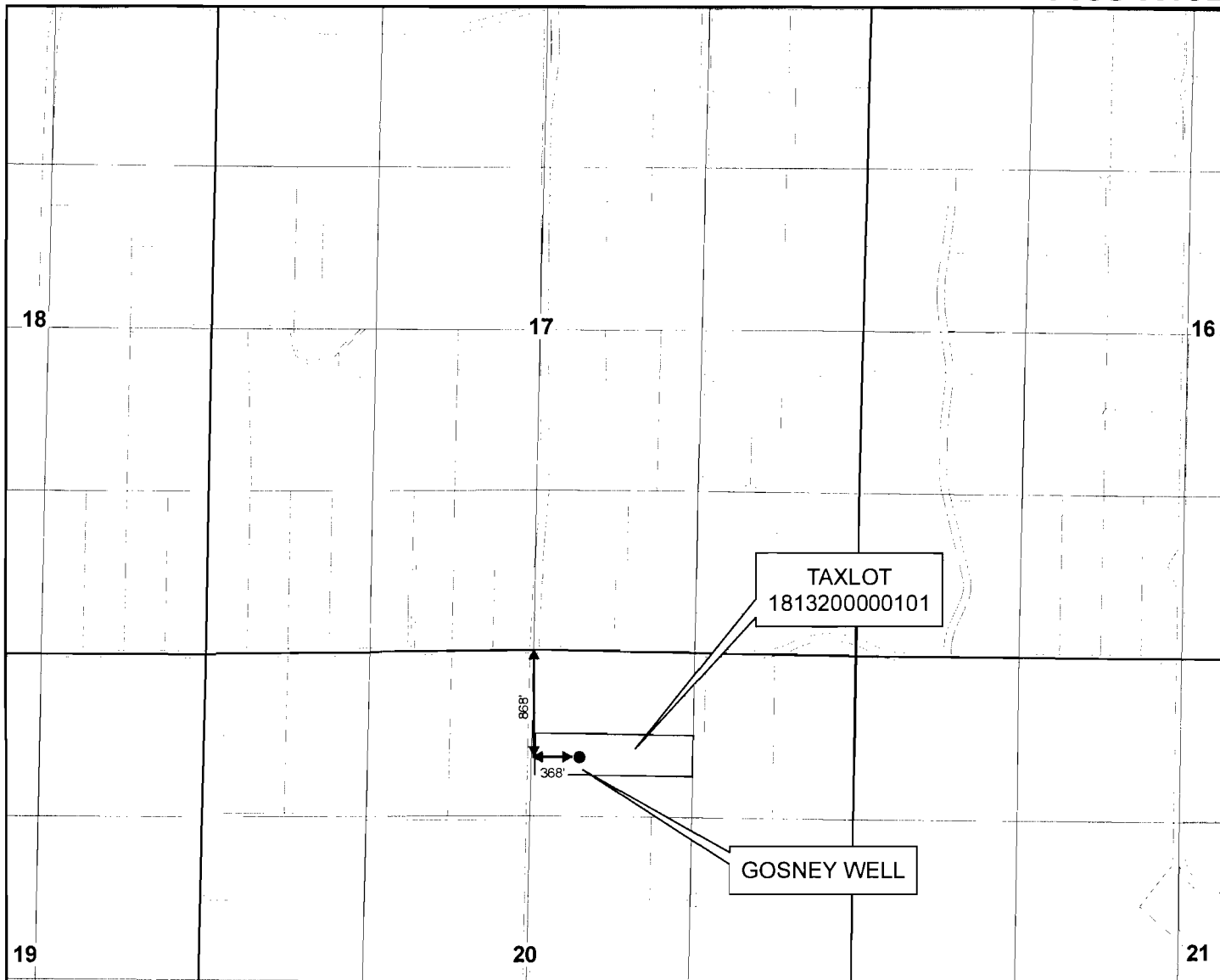
T 11324



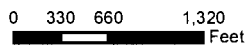
# AVION WATER CO, INC.

PERMIT AMENDMENT - WELL LOCATION MAP  
Application G-10208, Permit G-9284  
Deschutes County

T18S R13E



1 inch = 1,320 feet



DRAWN BY: TANNER LEMMON  
AVION WATER GIS DEPARTMENT  
OCTOBER, 2011

**DISCLAIMER:**  
This map was prepared for the purpose of identifying the location of water rights only and is not intended to provide legal dimensions or locations of property ownership lines.

● POINT OF APPROPRIATION  
□ WELL SITE

## WELL DESCRIPTION

GOSNEY WELL -  
NW 1/4, NE 1/4 of  
Section 20, T 18 S, R 13 E,  
WM - 868' South and 368'  
East from the N 1/4 corner of  
Section 20  
Taxlot - 1813200000101

## NOTES:

Base Layer:  
Deschutes County Taxlot Shapefile  
Projected Coordinate System :  
NAD 1983 StatePlane Oregon South  
Geographic Coordinate System :  
GCS North American 1983

RECEIVED

DEC 07 2011

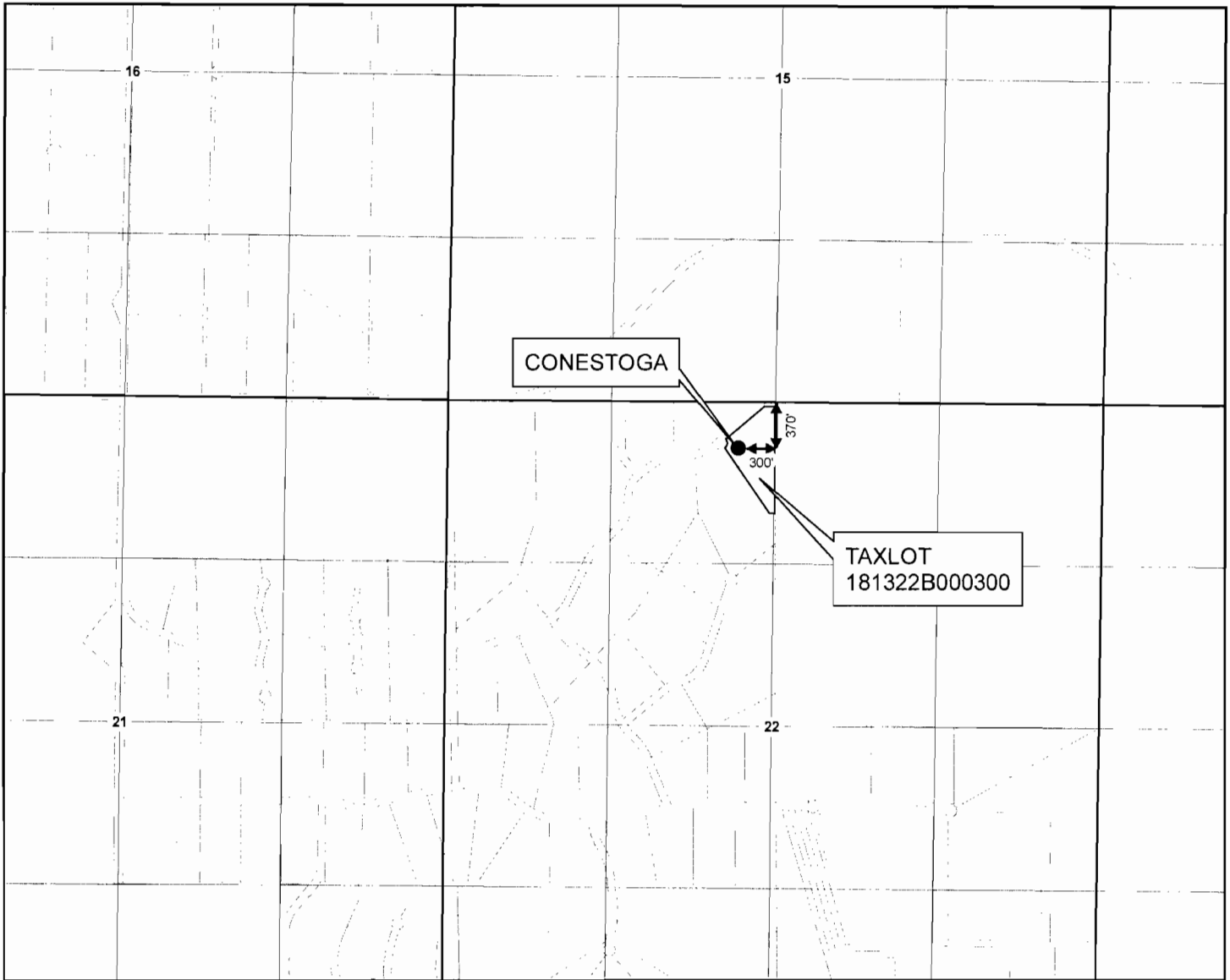
WATER RESOURCES DEPT  
SALEM, OREGON

T 11324



**AVION WATER CO, INC.**  
**PERMIT AMENDMENT - WELL LOCATION MAP**  
 Application G-10208, Permit G-9284  
 Deschutes County

**T18S R13E**



1 inch = 1,320 feet  
 0 330 660 1,320  
 Feet

DRAWN BY: TANNER LEMMON  
 AVION WATER GIS DEPARTMENT  
 OCTOBER, 2011

**DISCLAIMER:**  
 This map was prepared for the purpose of identifying the location of water rights only and is not intended to provide legal dimensions or locations of property ownership lines.

**Legend**

- POINT OF APPROPRIATION
- WELL SITE

**WELL DESCRIPTION**

CONESTOGA -  
 NE 1/4, NW 1/4 of  
 Section 22, T 18 S, R 13 E,  
 WM - 370' South and 300'  
 West from the N 1/4 corner of  
 Section 22  
 Taxlot - 181322B000300

**NOTES:**

Base Layer:  
 Deschutes County Taxlot Shapefile  
 Projected Coordinate System :  
 NAD 1983 StatePlane Oregon South  
 Geographic Coordinate System :  
 GCS North American 1983

**RECEIVED**

DEC 07 2011

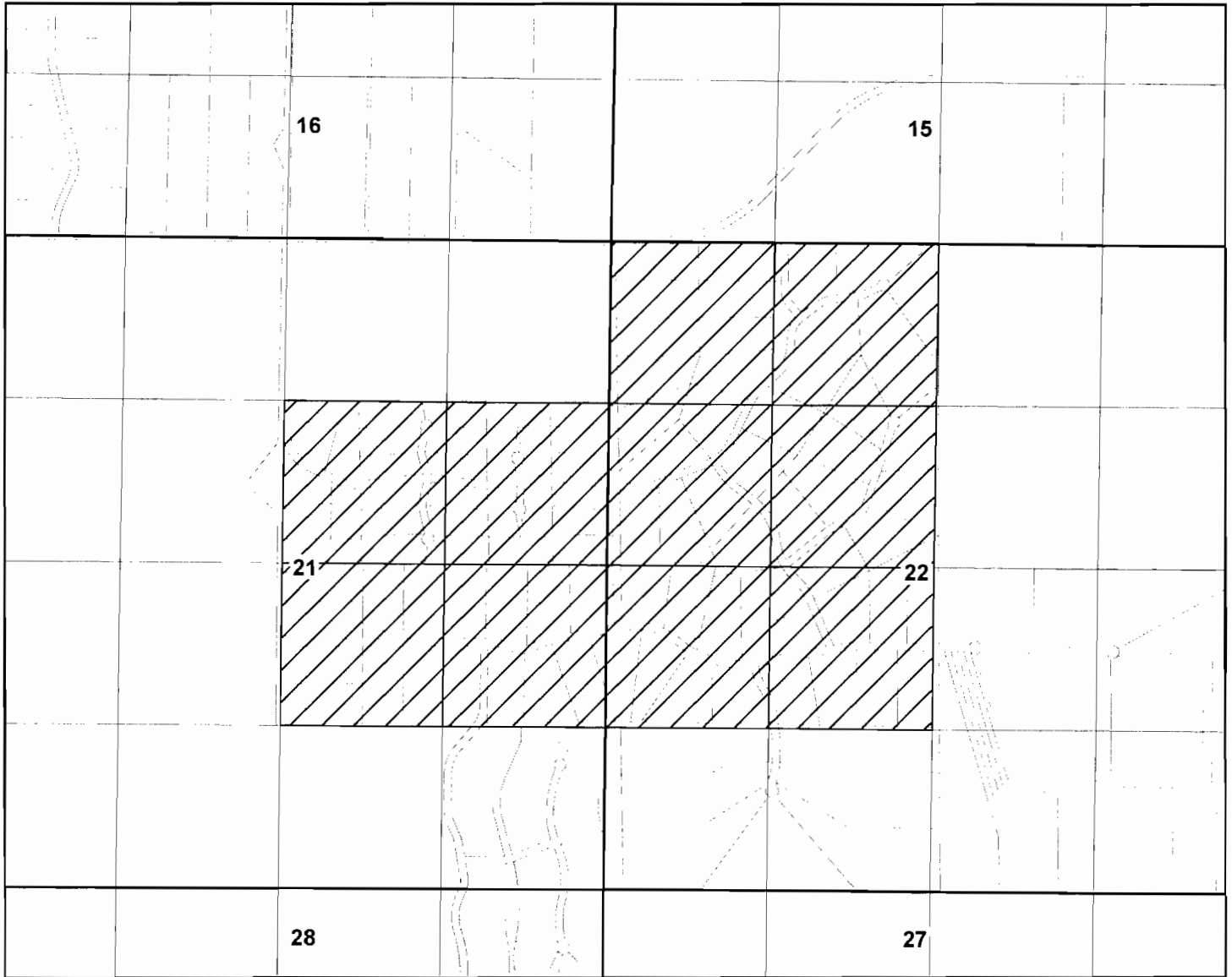
WATER RESOURCES DEPT  
 SALEM, OREGON

T 11324

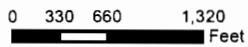


**AVION WATER CO, INC.**  
**PERMIT AMENDMENT - PLACE OF USE**  
 Application G-10208, Permit G-9284  
 Deschutes County

**T18S R13E**




1 inch = 1,320 feet



DRAWN BY: TANNER LEMMON  
 AVION WATER GIS DEPARTMENT  
 OCTOBER, 2011

**DISCLAIMER:**

This map was prepared for the purpose of identifying the location of water rights only and is not intended to provide legal dimensions or locations of property ownership lines.

 PLACE\_OF\_USE

**NOTES:**

Base Layer:  
 Deschutes County Taxlot Shapefile  
 Projected Coordinate System :  
 NAD 1983 StatePlane Oregon South  
 Geographic Coordinate System :  
 GCS North American 1983

**RECEIVED**  
 DEC 07 2011  
 WATER RESOURCES DEPT  
 SALEM, OREGON

T 11304