

NE1/4 SEC 33 T5N R28E WM
UMATILLA COUNTY

SCALE 1" = 200' 400'

9/25/06

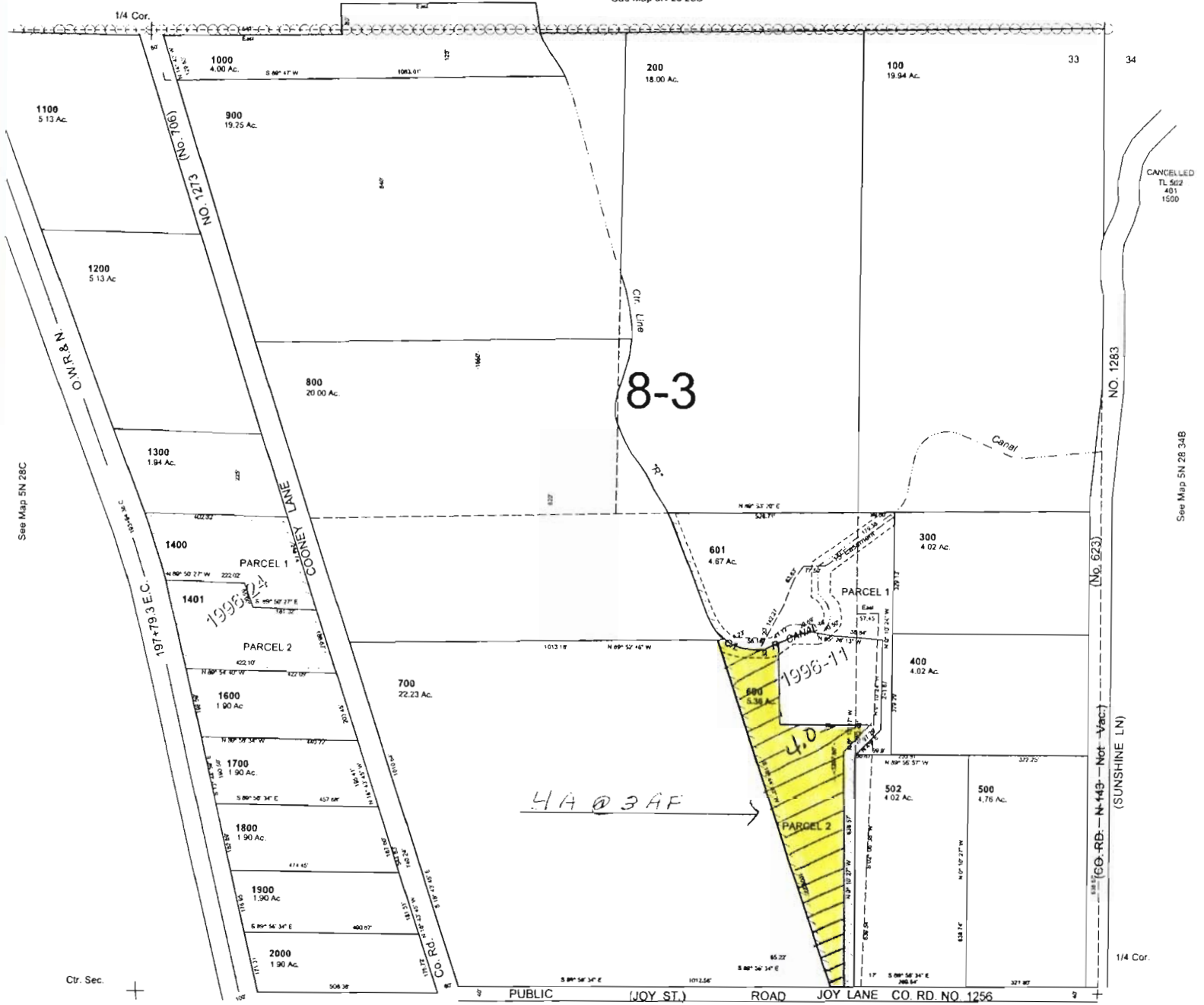
5N 28 33A
AERIAL PHOTO NO. 1P-105

6-3

See Map 5N 28 28D

28 27

1/4 Cor.



8-3

CANCELLED
TL 562
401
1500

See Map 5N 28 34B

4.4 @ 3 AF →

Ctr. Sec.

PUBLIC (JOY ST.) ROAD JOY LANE CO. RD. NO 1256

See Map 4N 28 33D



T 11326

RECEIVED

DEC 12 2011

WATER RESOURCES DEPT
SALEM, OREGON

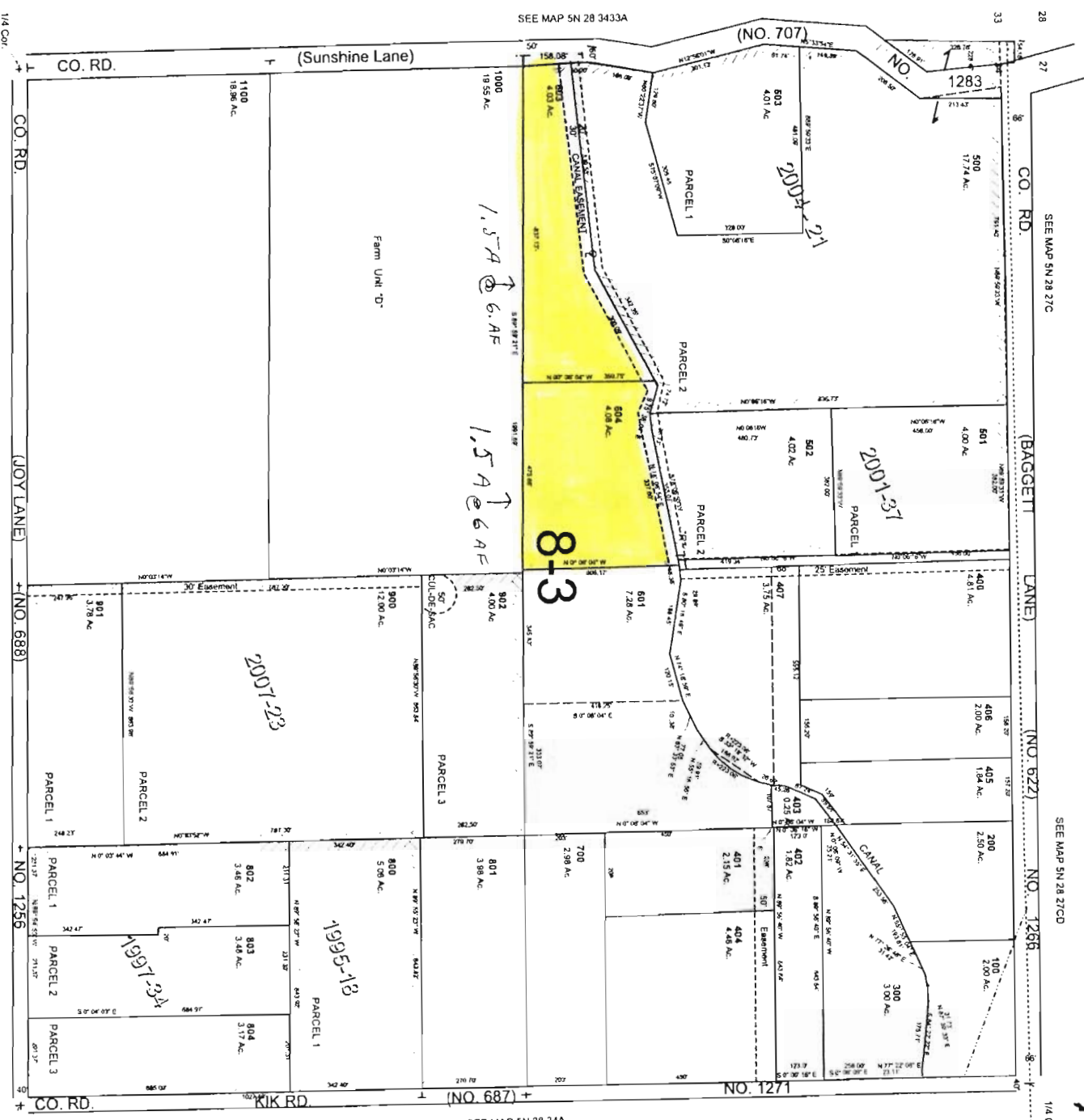
5N 28 33A



SCALE: 1" = 200' 400'

AERIAL PHOTO NO. NZ-IP-104

70



RECEIVED

DEC 1 2 2011

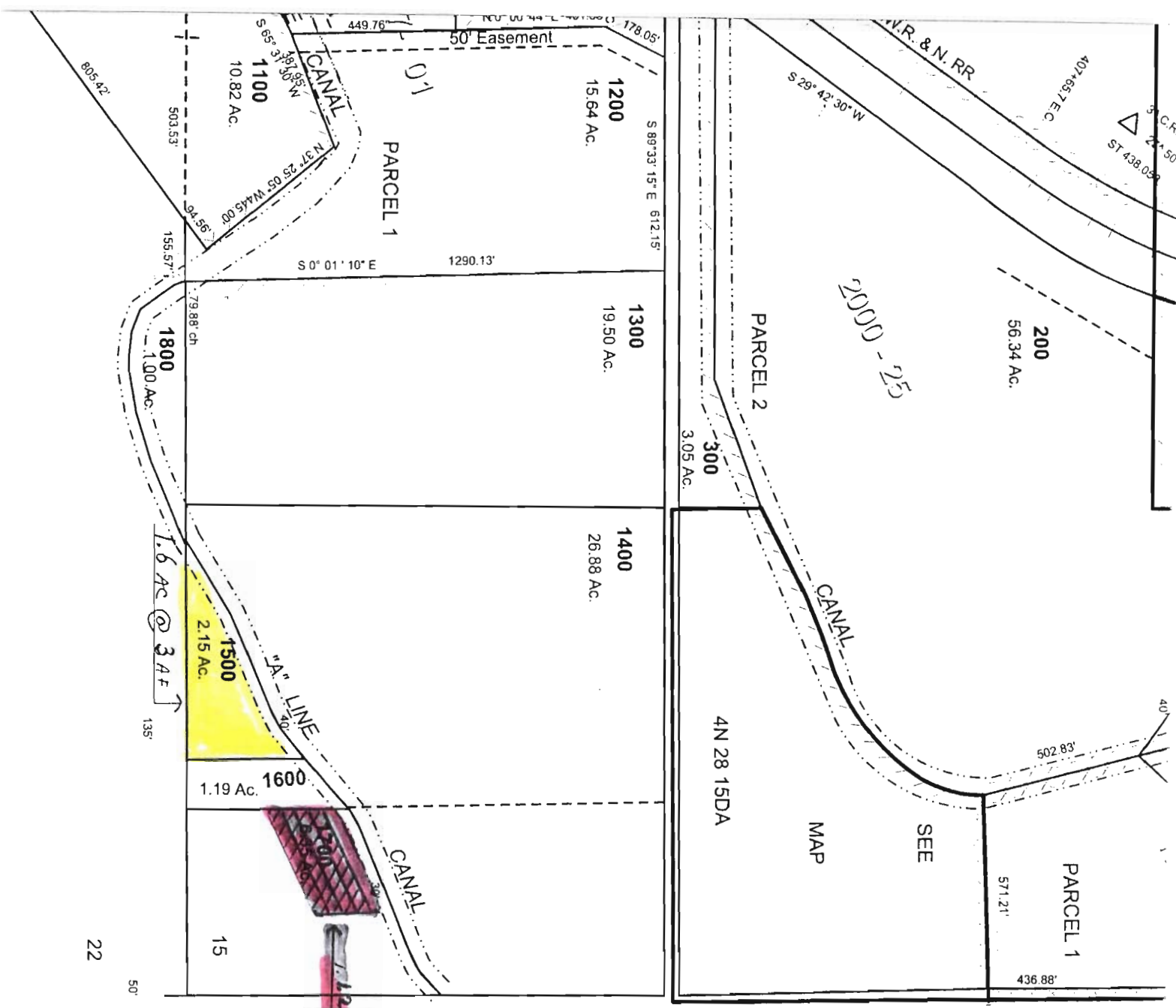
WATER RESOURCES DEPT
SALEM, OREGON

T 11326

5N2834B

CANCELLED
TL 802
805
808
809





4N 28 15

22
23

Revised: 7/16/10

CO RD (Hermiston Hinkle)

SEE MAP
4N 28 14CC



T 11326

SCALE 1" = 400'

(NO 598)

SEE MAP
4N 28 14CB

RECEIVED
DEC 12 2011
WATER RESOURCES DEPT
SALEM, OREGON

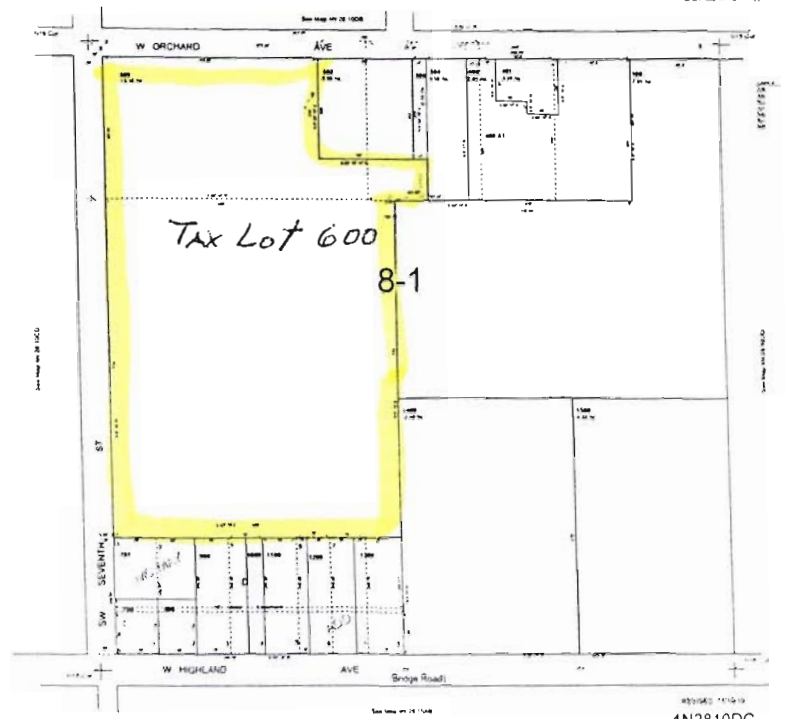
70

Information & Tiesheet
referred to in this
map for purposes

SW1/4 SE1/4 SEC 10T4NR28E WM
UMATILLA COUNTY
SCALE 1" = 400'

4N2810DC
SW

1
2

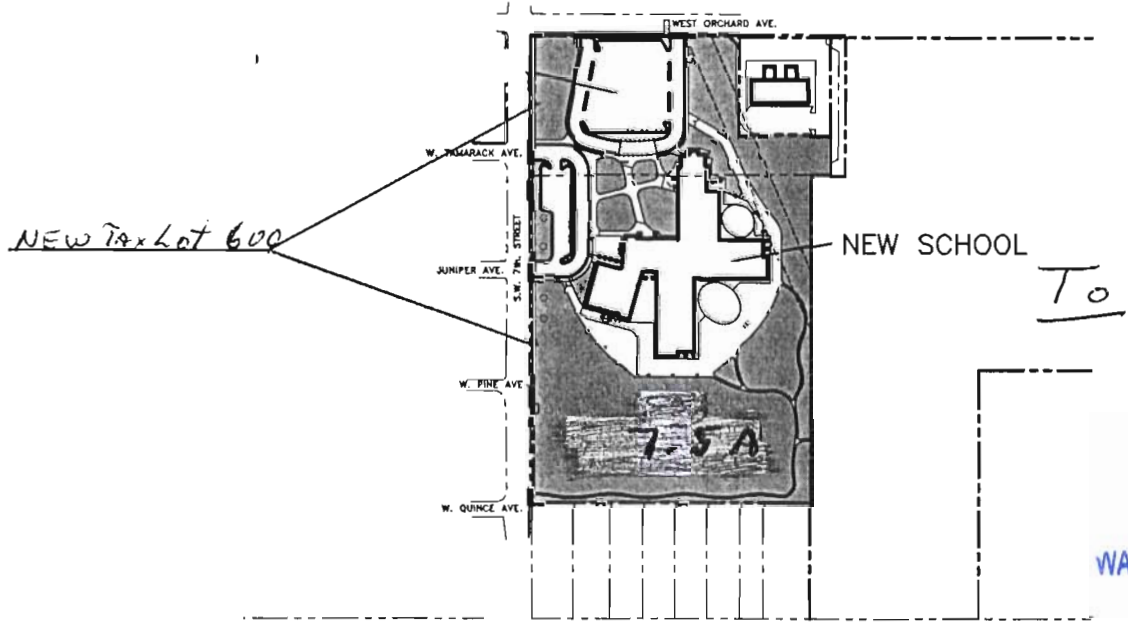
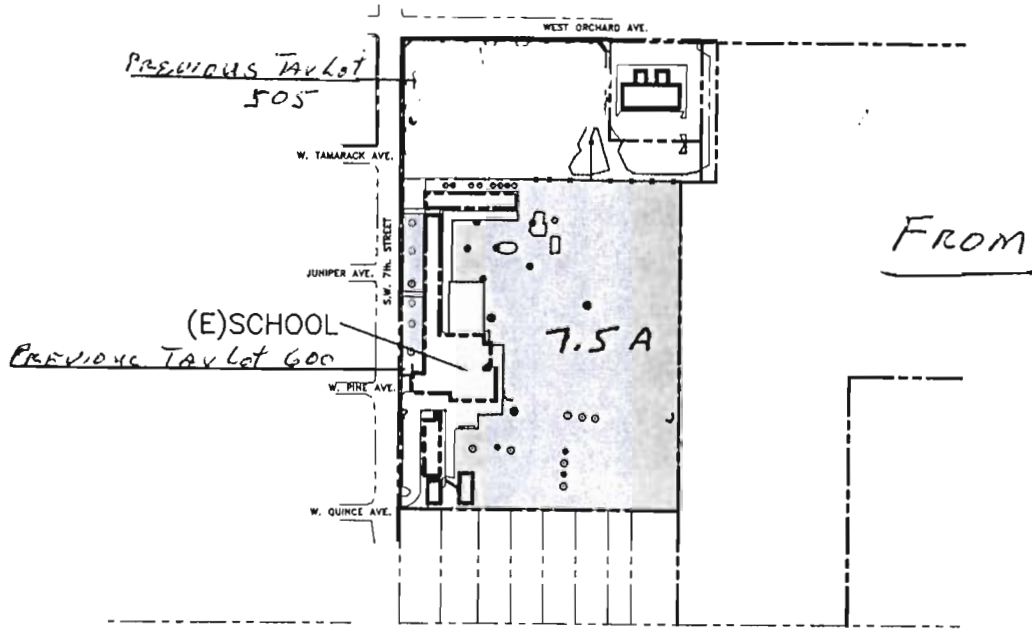


4N2810DC

T 11326

RECEIVED
DEC 1 2 2011
WATER RESOURCES DEPT
SALEM, OREGON

SW 1/4 SE 1/4 SEC 10 T4NR28E WM



RECEIVED
 DEC 12 2011
 WATER RESOURCES DEPT
 SALEM, OREGON



Meier
 ARCHITECTURE • ENGINEERING
 8697 Gage Boulevard P: 509.735.1589
 Kennewick, WA 99336 F: 509.783.5075

SCALE 1"=400'-0"
 DRAWN SJT
 APPROVED PTK
 DATE 3/30/11

DWG. NO.
SK-1
 JOB NO: 5977
 REF DWG: _____

WEST PARK-IRRIGATION EXHIBIT

T 11326

SE1/4 SEC 26 T5N R28E WM
UMATILLA COUNTY

4/5/08

TO

5N 28 26D

AERIAL PHOTO NO. 1P-103

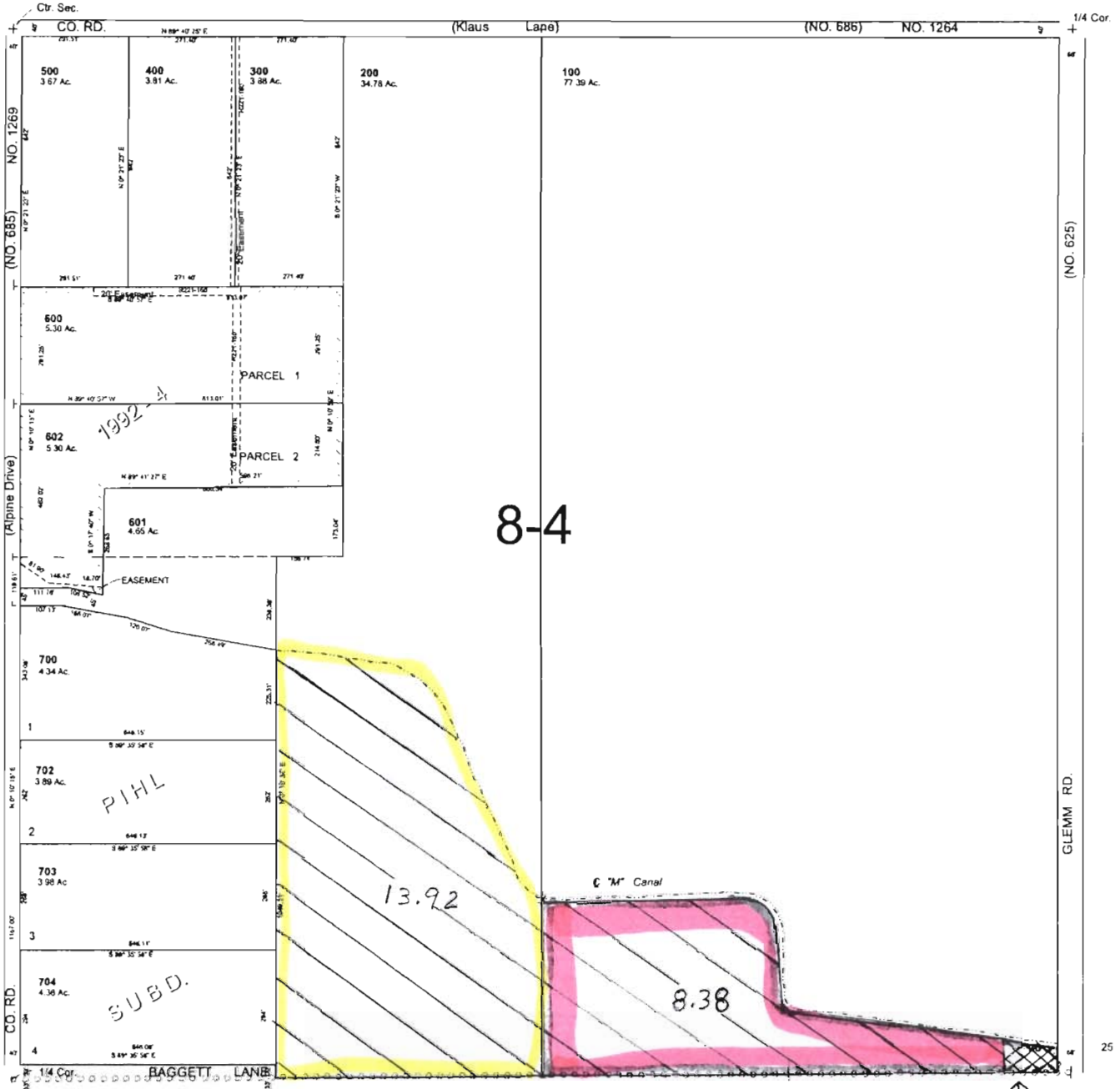
SCALE 1"=~~200~~ 400'

See Map 5N 28 26A

See Map 5N 28 26C

CANCELLED
TL 701

See Map 5N 28D



See Map 5N 28 35A

31
6 AF

RECEIVED

DEC 1 2 2011

WATER RESOURCES DEPT
SALEM, OREGON

5N 28 26D

T 11326

Assessment and Taxation
are prepared for
purposes.



SW1/4 NW1/4 SEC 15 T 5N R 28E WM UMATILLA COUNTY, OR

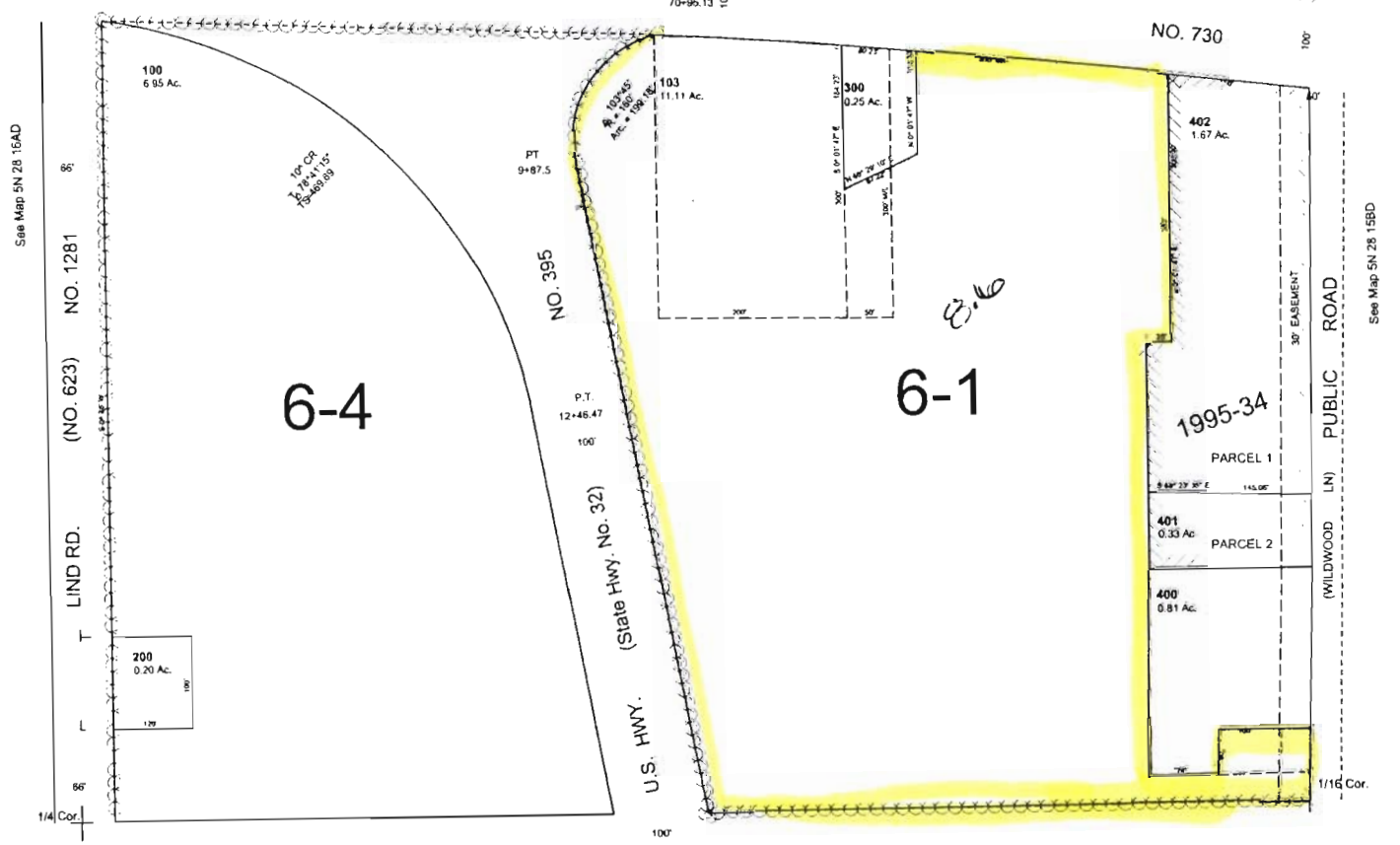
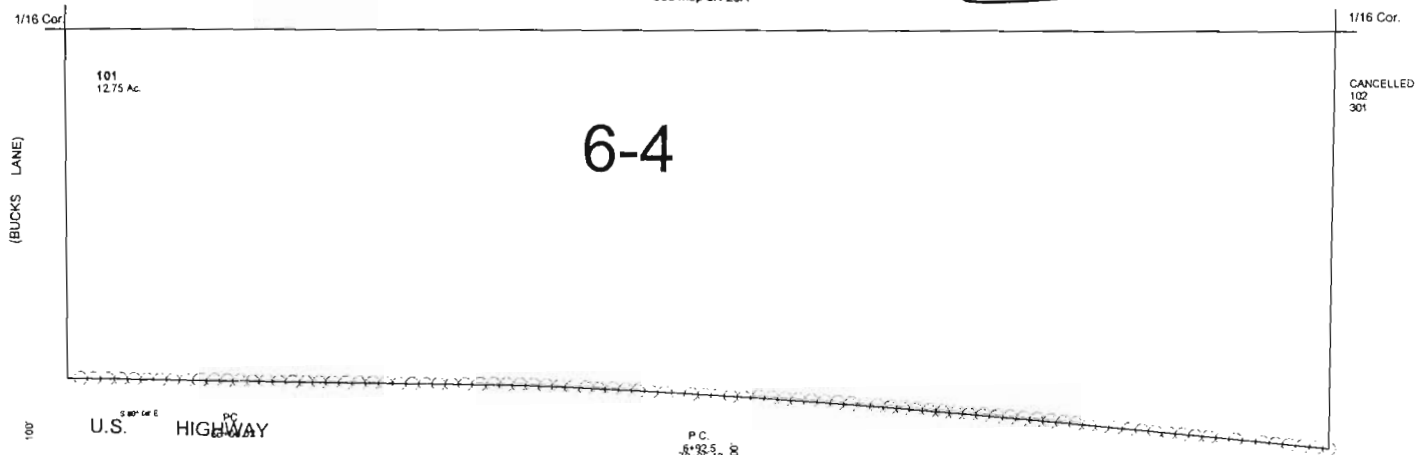
5N2815BC
Aerial Photo No. 1P-58

SCALE: 1" = 100'

8/12/03

FROM

See Map 5N 28A



T 11326

RECEIVED
DEC 12 2011
 WATER RESOURCES DEPT
 SALEM, OREGON

5N2815BC

Taxation
for

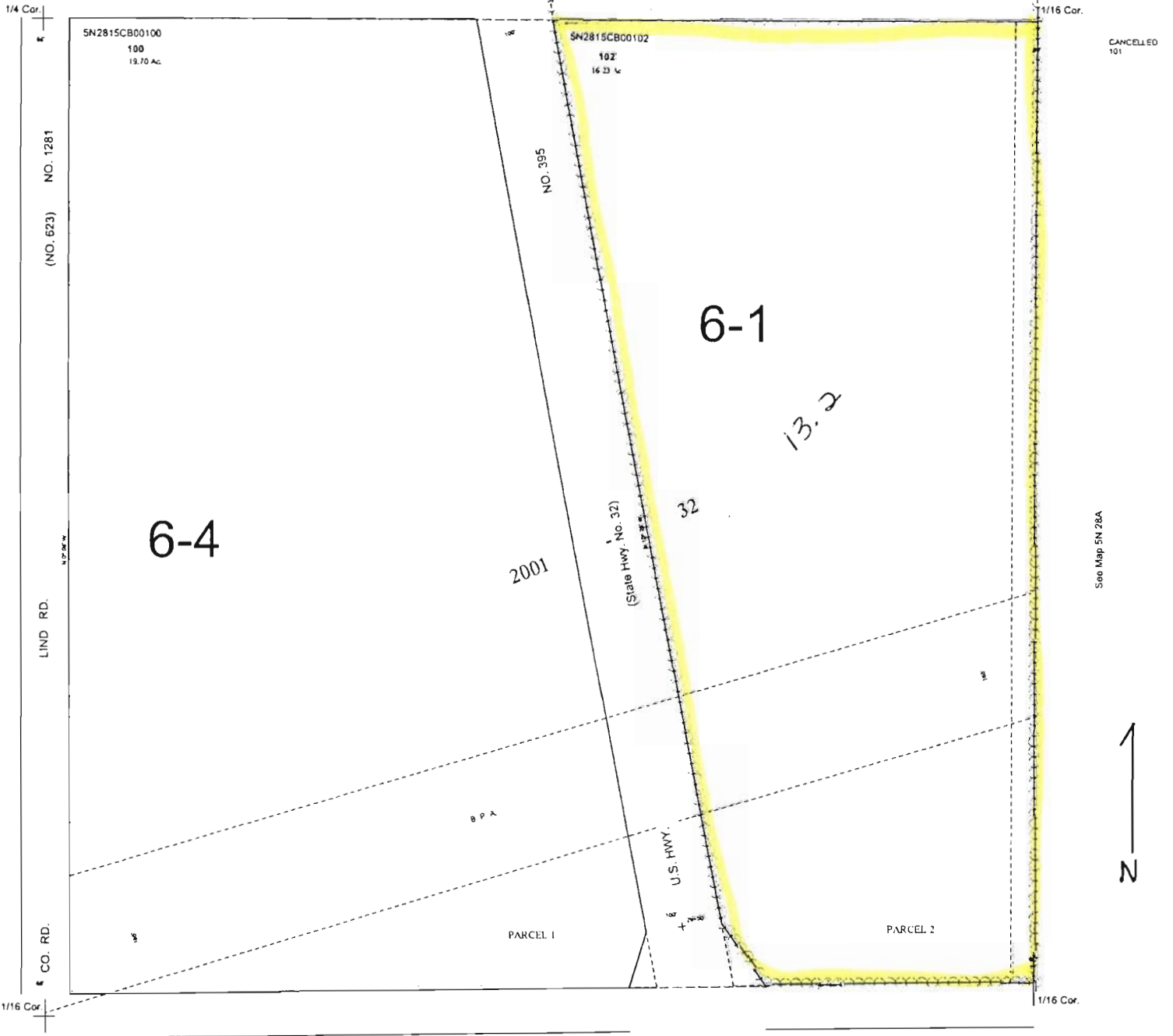
NW 1/4 SW 1/4 SEC 15 T5N R28E WM UMATILLA COUNTY

SCALE 1"=100'

5N 28 15CB
AERIAL PHOTO NO NZ 1P-58

FROM

See Map 5N 28 15BC



See Map 5N 28 15CC

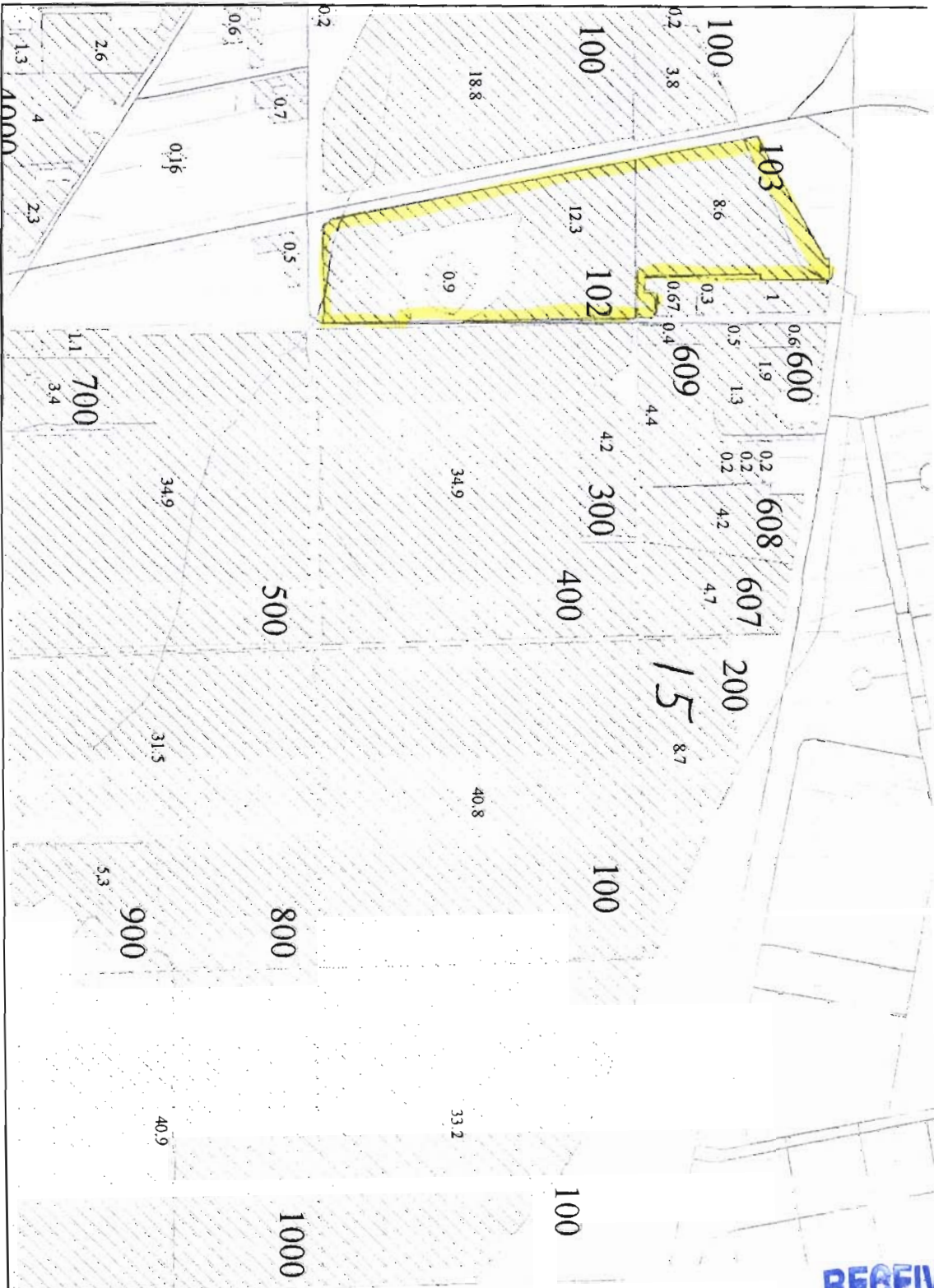
5N 28 15CB

RECEIVED

DEC 12 2011

WATER RESOURCES DEPT
SALEM, OREGON

T 11326



SN 2815

From

RECEIVED

DEC 1 2 2011

WATER RESOURCES DEPT
SALEM, OREGON

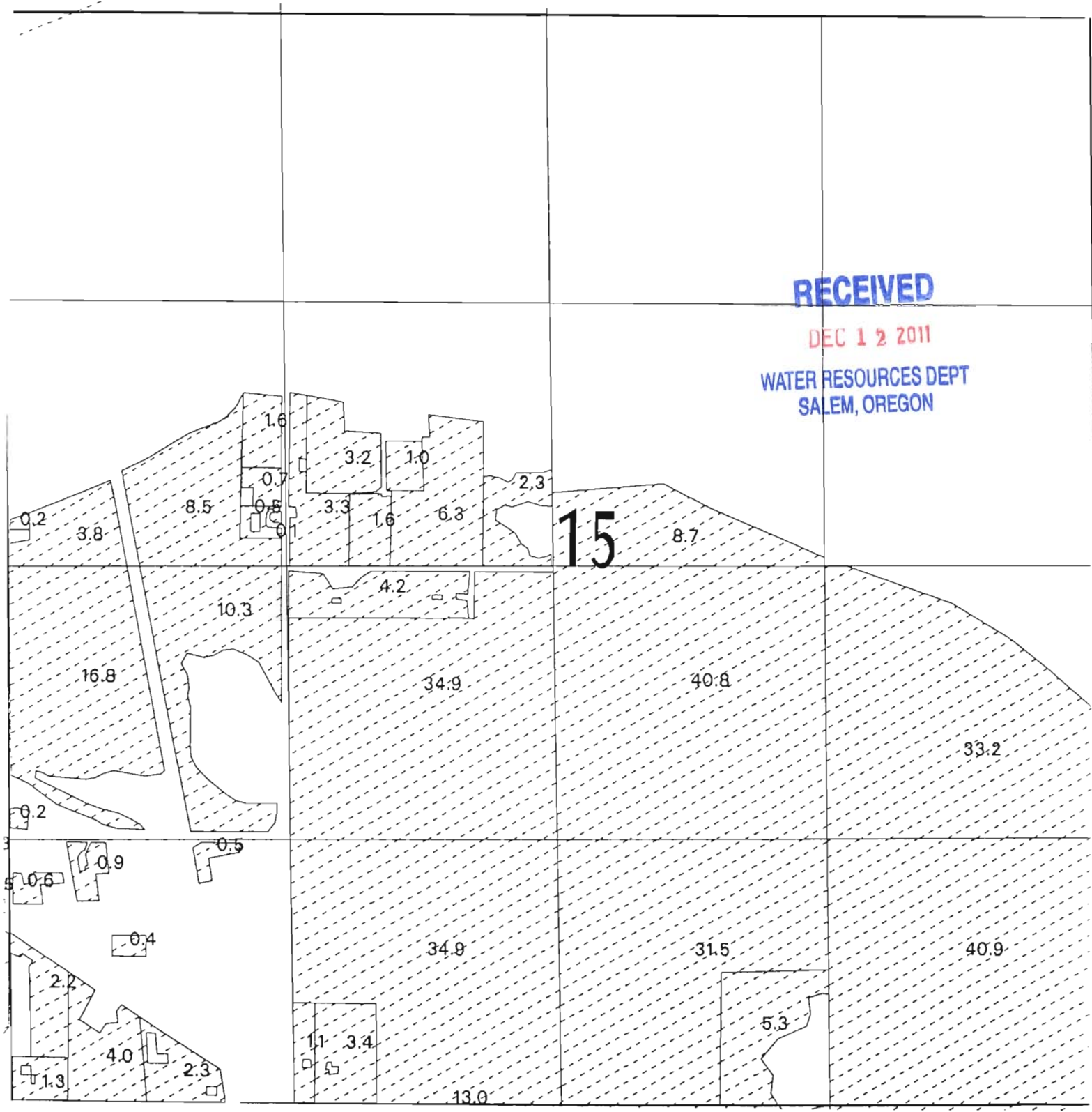
T 11326

TOWNSHIP 5 N., RANGE 28 E., W.M.

RECEIVED

DEC 12 2011

WATER RESOURCES DEPT
SALEM, OREGON



T 11326 SCALE 1 inch = 660 feet



ment & Taxation
ared nor is it suitable
purposes.



NE1/4 SE1/4 SEC 9 T 4N R 28E WM UMATILLA COUNTY, OR

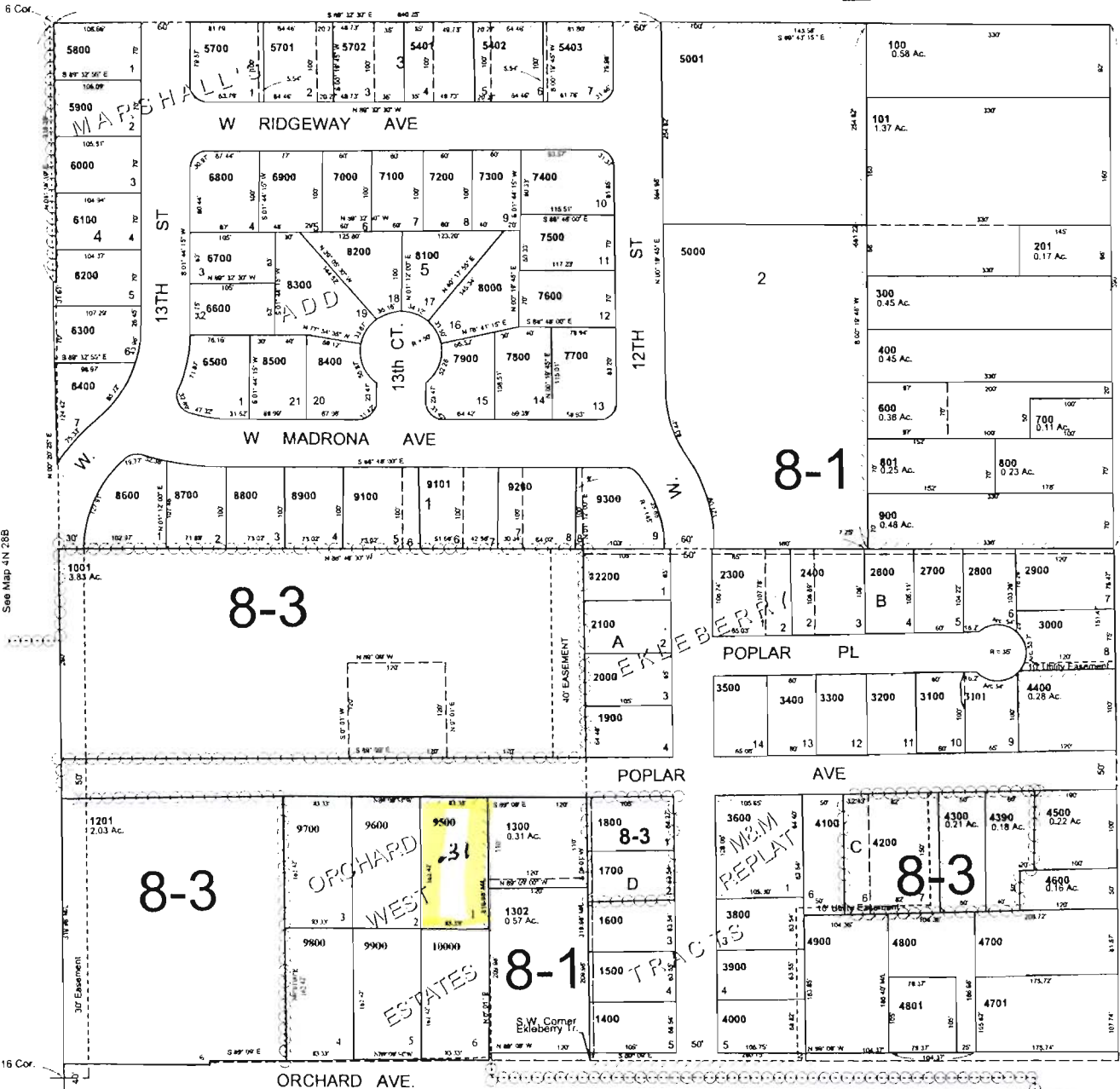
SCALE: 1" = 100' 400'

4N2809D/

Ekleberry Tracts
Marshall's Add
Aerial Photo No. IP-121

See Map 4N 28 09AD

FROM



1/4 Cor.

- CANCELLED
- 4101
 - 1100
 - 3700
 - 2500
 - 1000
 - 5100
 - 5200
 - 5300
 - 5400
 - 5500
 - 5600
 - 9000
 - 9201
 - 9301
 - 9400
 - 2401
 - 1301
 - 200
 - 500
 - 4702
 - 4803
 - 4901
 - 4802
 - 1200

See Map 4N 28 10CB



1/16 Cor.

1/16 Cor.

See Map 4N 28 09DD

Revised: 8/3/09/24/05

RECEIVED

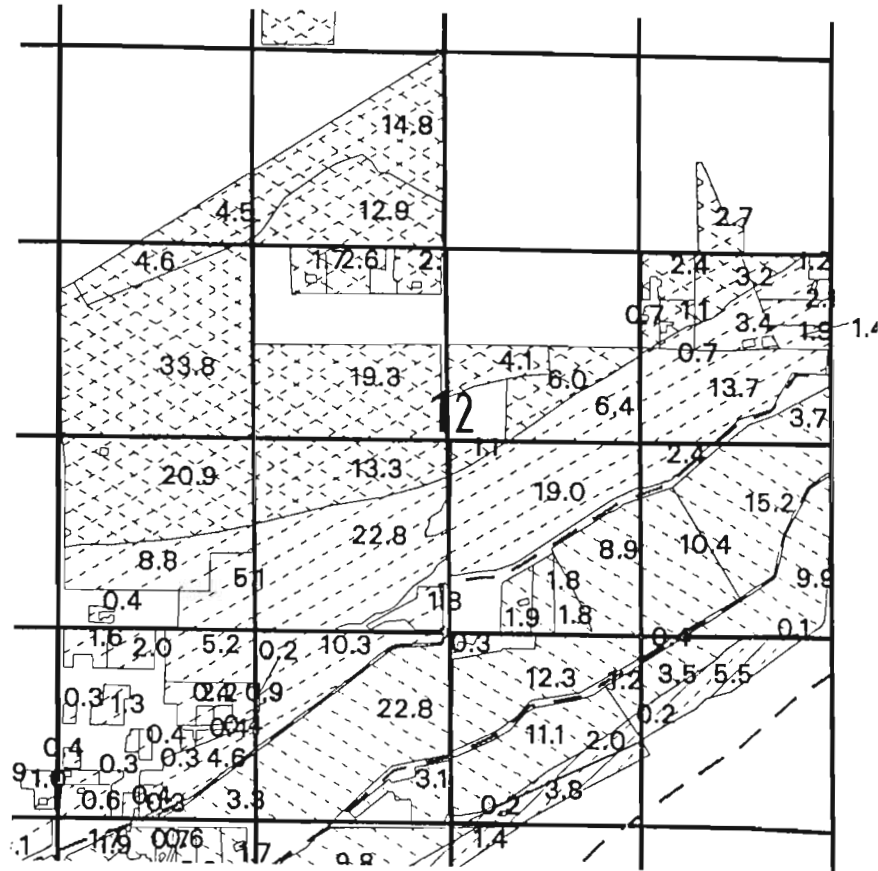
DEC 1 2 2011

**WATER RESOURCES DEPT
SALEM, OREGON**

4N2809DA

T 11326

TOWNSHIP 4 N., RANGE 28 E., W.M.



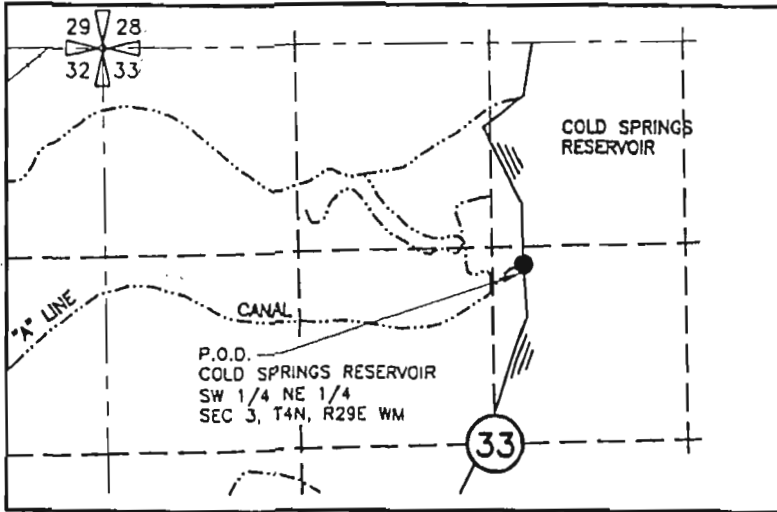
RECEIVED
DEC 12 2011
WATER RESOURCES DEPT
SALEM, OREGON

SCALE 1 inch = 1320 feet

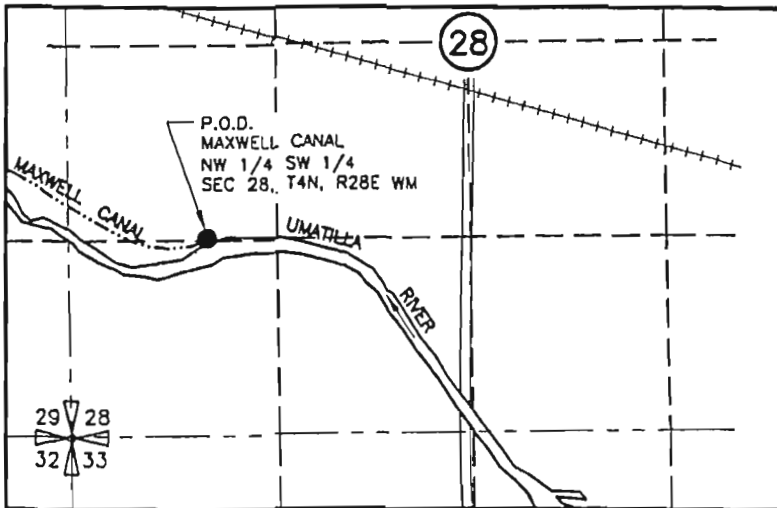


T 11326

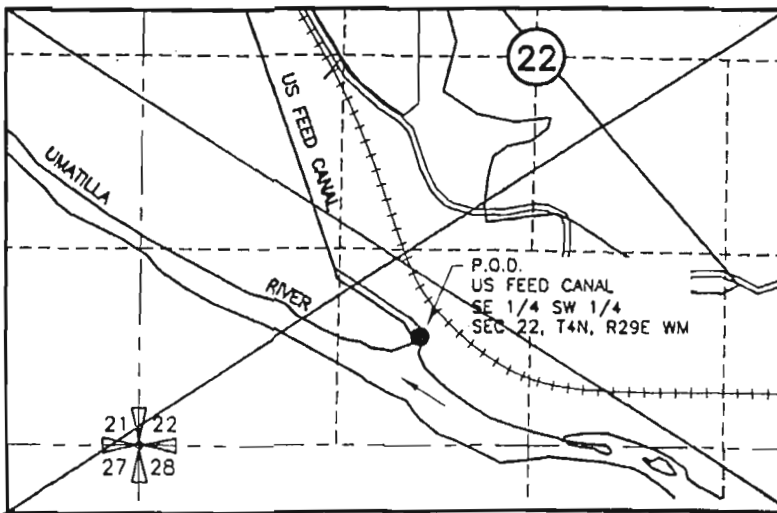
P.O.D. "A" LINE CANAL



P.O.D. MAXWELL CANAL



P.O.D. US FEED CANAL



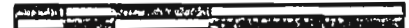
RECEIVED

DEC 12 2011

WATER RESOURCES DEPT
SALEM, OREGON



0 1320 2640



SCALE IN FEET

1 11320

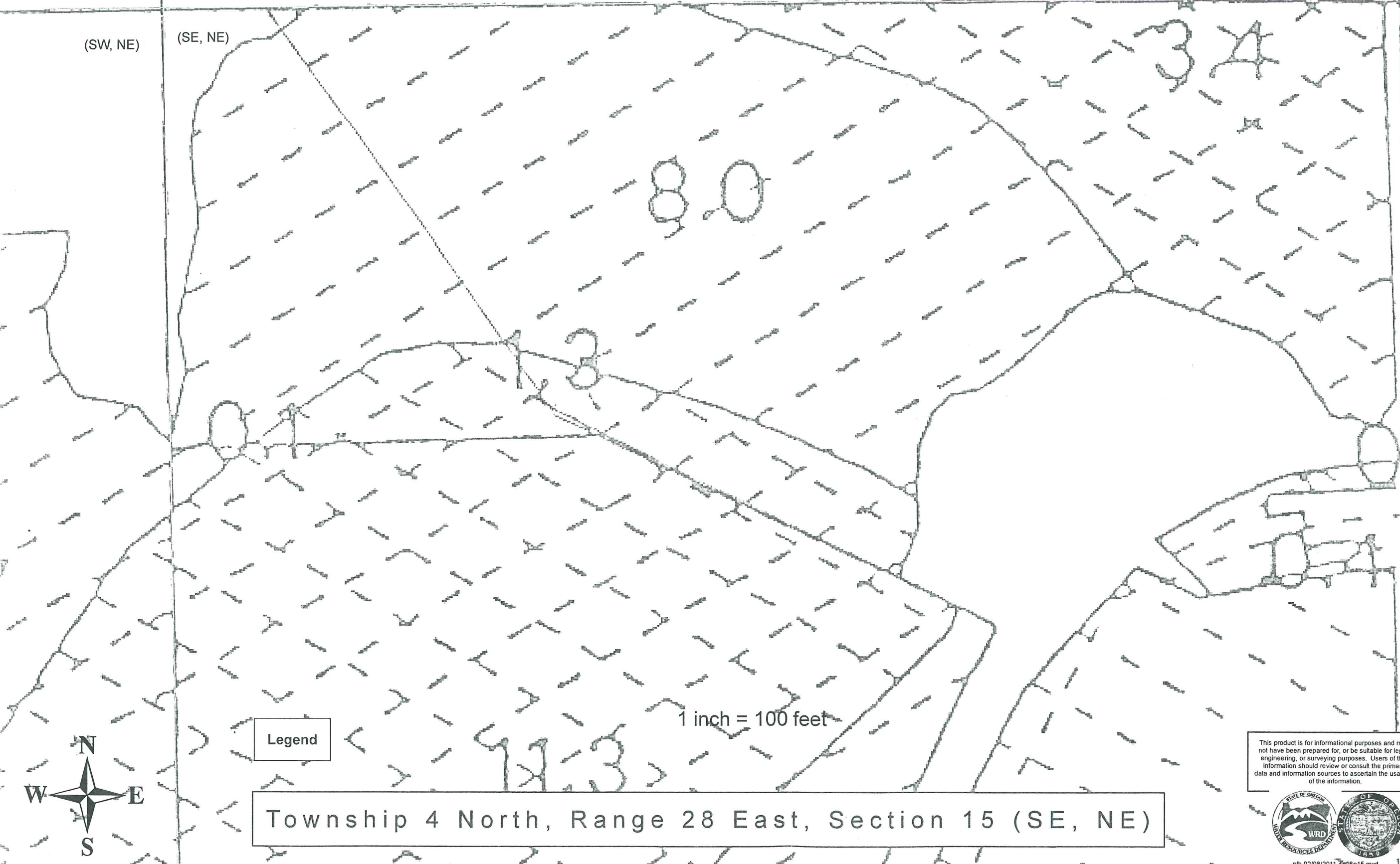
4N 28E section 15

(NE, NE)

(NW, NE)

(SW, NE)

(SE, NE)



Legend

1 inch = 100 feet

Township 4 North, Range 28 East, Section 15 (SE, NE)

This product is for informational purposes and may not have been prepared for, or be suitable for, legal, engineering, or surveying purposes. Users of this information should review or consult the primary data and information sources to ascertain the usability of the information.



T 11326