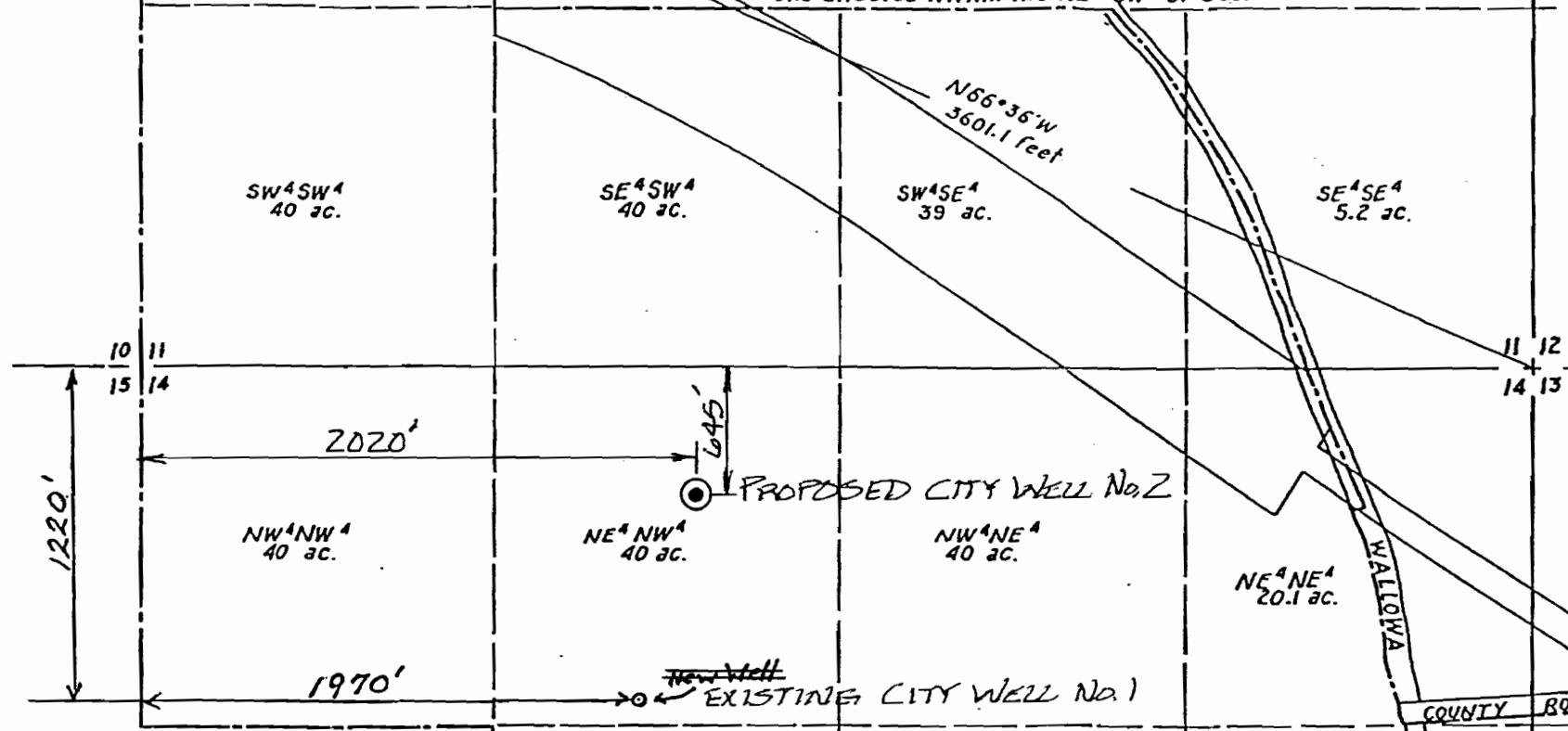


NW<sup>4</sup>SW<sup>4</sup>  
9.1 ac.

Well under  
Permit G-3353  
Note: Ref. J. Herberl Dale Well No 1 - Permit No G-2704  
(P.O.D. seems to be in error)  
Well-bears N66°36'W, 3601.1 feet from the SE. Cor. Sec. 11, T1N, R42 E.W.M.  
and situated within the NE<sup>4</sup>SW<sup>4</sup> of Sec. 11.

CITY of  
R  
F  
WATER  
SAL  
C  
scale: 8" = 1 mi



Sec. 11

NW <sup>4</sup> SW <sup>4</sup>	9.1 ac.
SW <sup>4</sup> SW <sup>4</sup>	40 -
SE <sup>4</sup> SW <sup>4</sup>	40 -
SW <sup>4</sup> SE <sup>4</sup>	39 -
SE <sup>4</sup> SE <sup>4</sup>	5.2 -
<hr/>	
	133.3 acres

Sec. 13

NW <sup>4</sup> NW <sup>4</sup>	1.6 -
SW <sup>4</sup> NW <sup>4</sup>	40 -
NW <sup>4</sup> SW <sup>4</sup>	5.0 -
<hr/>	
	46.6 acres

Sec. 14

NW <sup>4</sup> NW <sup>4</sup>	40 -	NW <sup>4</sup> SE <sup>4</sup>	20 ac.
NE <sup>4</sup> NW <sup>4</sup>	40 -	NE <sup>4</sup> SE <sup>4</sup>	20 -
SE <sup>4</sup> NW <sup>4</sup>	40 -	<hr/>	
NW <sup>4</sup> NE <sup>4</sup>	40 -	300.1 acres	

Total Acres 480.0

Surveyed for the City of Wallowa  
By: Verne H. Russell - Reg. Land Surveyor - Ore. 427  
Date: Feb. 25, 1967

T 11359