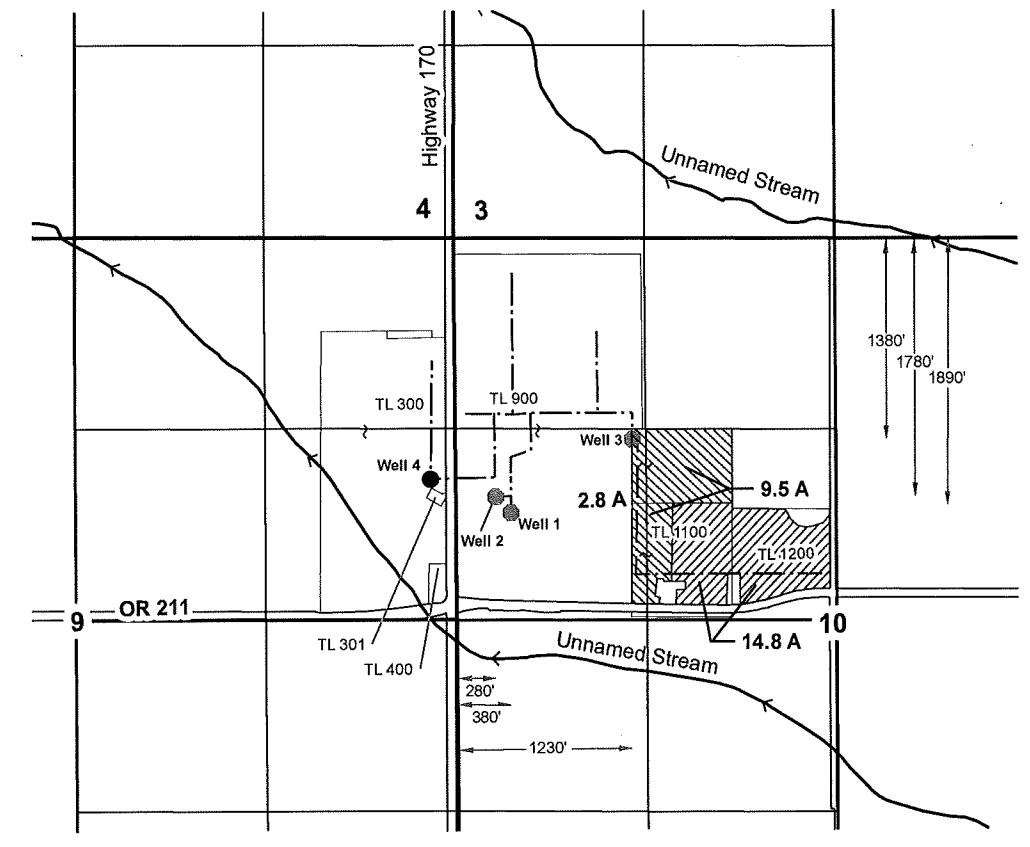
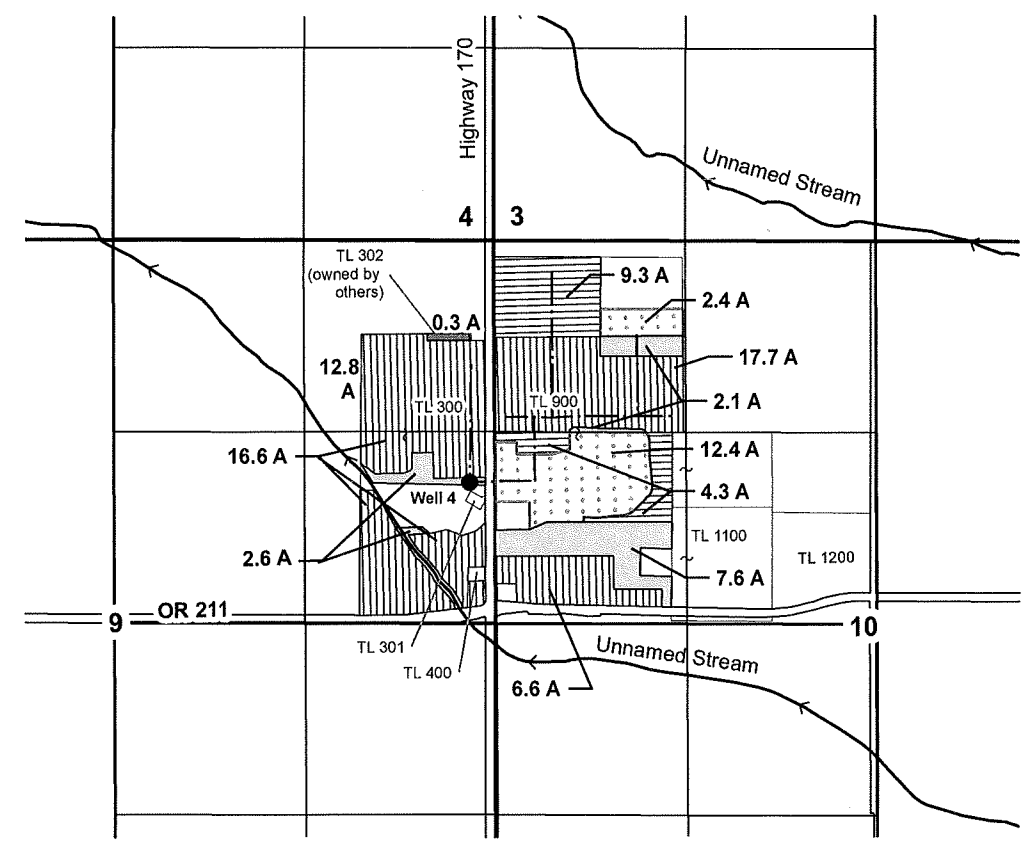


Township 5S, Range 1E, Sections 9 & 10  
Clackamas County

FROM Map

TO Map

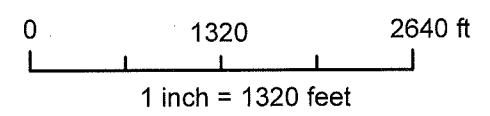
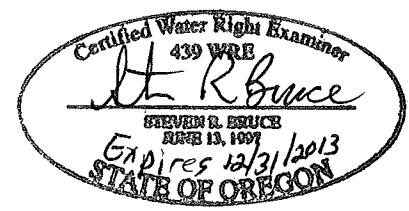


Explanation

- Authorized Well (Well 4)  
1680' S and 40' W from NE corner Section 9
- Proposed Wells
- Pipe Lines

Certificate 42788: May 29, 1968 Priority Certificate 44577: May 26, 1971 Priority

- |                                      |                                      |
|--------------------------------------|--------------------------------------|
| ■ From Lands (12.3 acres)            | ■ From Lands (14.8 acres)            |
| ▨ To Lands - Irrigation (12.3 acres) | ▨ To Lands - Irrigation (14.8 acres) |
| ▩ Remaining Rights (53.7 acres)      | ▩ Remaining Rights (13.6 acres)      |
| ■ Canceled Rights (0.3 acres)        |                                      |



RECEIVED

MAR 01 2012

WATER RESOURCES DEPT  
SALEM, OREGON

THIS MAP IS NOT INTENDED TO  
PROVIDE LEGAL DIMENSIONS  
OR LOCATIONS OF PROPERTY  
OWNERSHIP LINES

<b>Water-Rights Transfer Application Map</b> Willamette Egg Farms, LLC		Figure <b>1</b>
Geosyntec consultants	SKOOKUM WATER ASSOCIATES INC	
Portland, OR	30-Jan-2012	

T 11366

Path: P:\GIS\Projects\WillametteEggFarms\Map\Final\FromMap\012-01-30.mxd