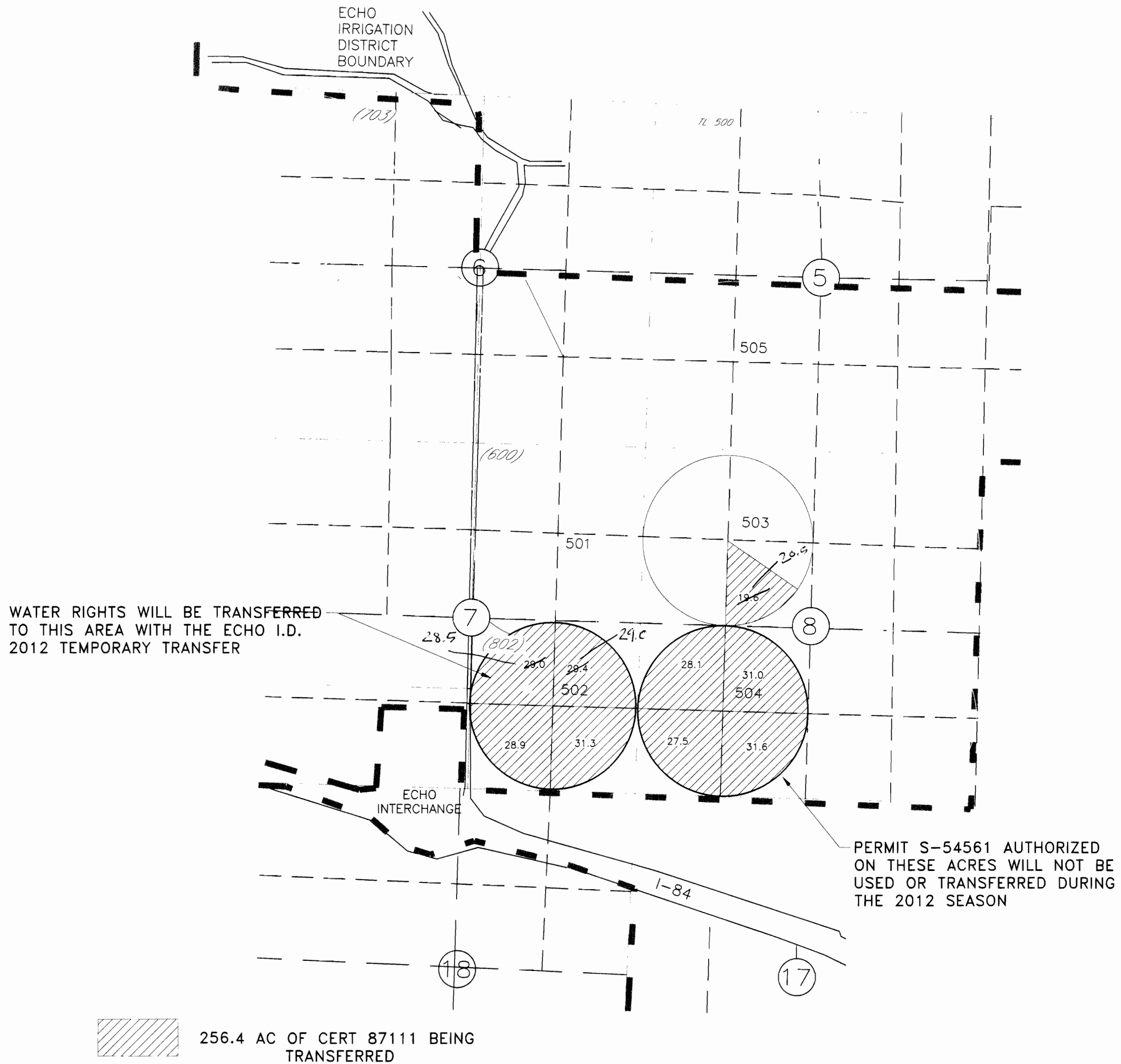


HALE FARMS, LLC
 2012 TEMPORARY TRANSFER
 MAP 1 OF 3
 T3N, R30E WM UMATILLA COUNTY
 FROM CERT 87111
 ECHO FARM



WATER RIGHTS WILL BE TRANSFERRED TO THIS AREA WITH THE ECHO I.D. 2012 TEMPORARY TRANSFER

PERMIT S-54561 AUTHORIZED ON THESE ACRES WILL NOT BE USED OR TRANSFERRED DURING THE 2012 SEASON

NOTE:
 THE PURPOSE OF THIS MAP IS TO IDENTIFY THE APPROXIMATE LOCATION OF THE WATER RIGHT. IT IS NOT INTENDED TO PROVIDE INFORMATION RELATIVE TO THE LOCATION OF PROPERTY OWNERSHIP BOUNDARY LINES. PIPE LOCATIONS AND SIZES WHERE SHOWN WERE PROVIDED BY FARM OPERATIONAL PERSONNEL AND ARE APPROXIMATE LOCATIONS AND SIZES.

DRAWING: F:\Project\30-08-016 - Porfily Water Rights Consulting\00 Misc Engineering\Cad\hale\HALE FARMS LLC 2012\30-08-016 FROM 2012.dwg
 PRINTED BY: rwillara on 03/08/12 02:06 PM

T 11379

RECEIVED
 MAR 20 2012
 WATER RESOURCES DEPT
 SALEM, OREGON

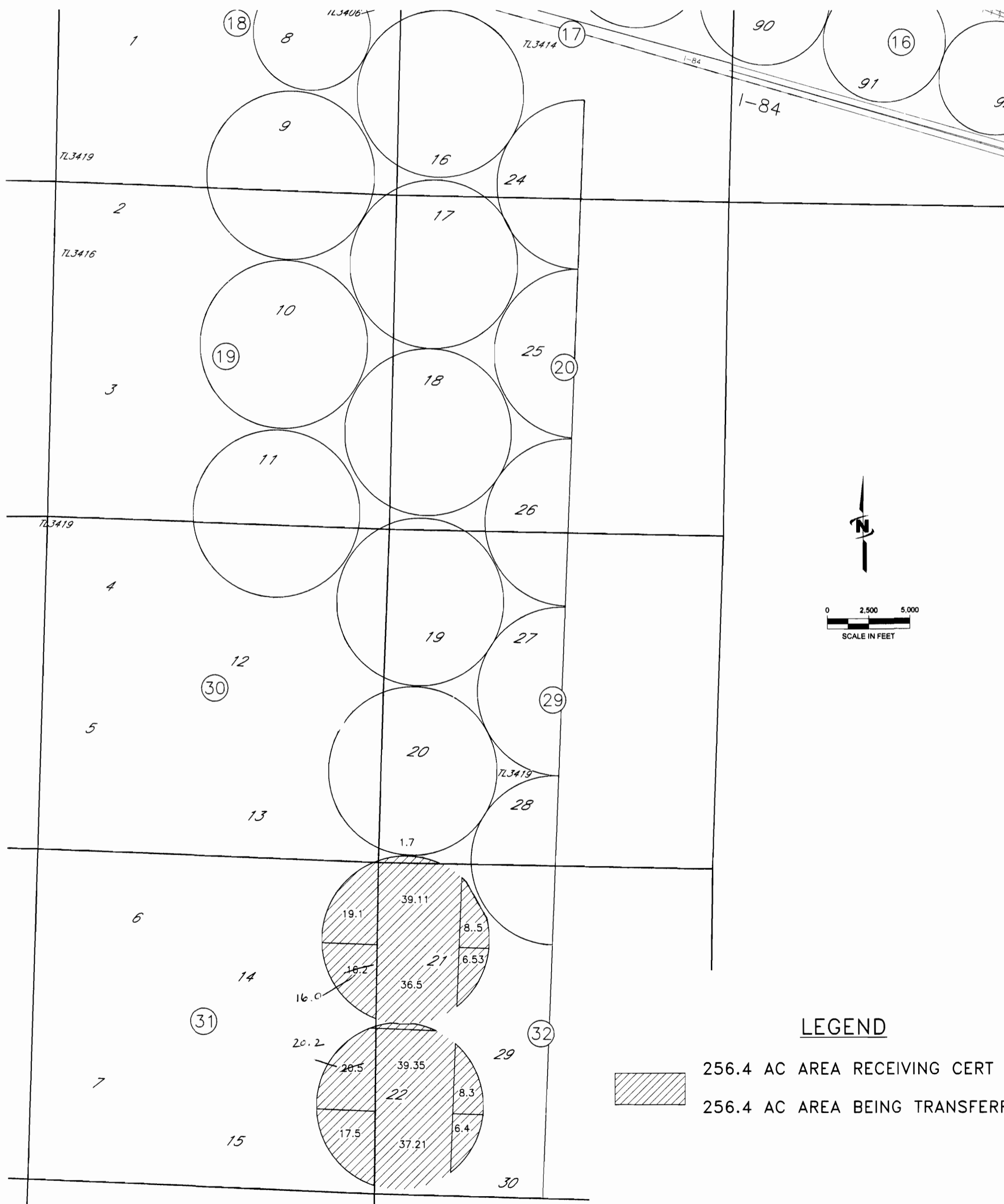
JUB
 Engineers • Surveyors • Planners
 2810 W. CLEARWATER AVE., STE. 201
 KENNEWICK, WA 99336 (509) 783-2144

HALE FARMS, LLC 2012 TEMPORARY TRANSFER MAP 2 OF 3

T4N, R26E WM MORROW COUNTY

TO CERT 87111
FROM CERT 79482

PATERSON FARM



LEGEND

- 256.4 AC AREA RECEIVING CERT 87111
- 256.4 AC AREA BEING TRANSFERRED FROM CERT 79482

NOTE:
THE PURPOSE OF THIS MAP IS TO IDENTIFY THE APPROXIMATE LOCATION OF THE WATER RIGHT. IT IS NOT INTENDED TO PROVIDE INFORMATION RELATIVE TO THE LOCATION OF PROPERTY OWNERSHIP BOUNDARY LINES. PIPE LOCATIONS AND SIZES WHERE SHOWN WERE PROVIDED BY FARM OPERATIONAL PERSONNEL AND ARE APPROXIMATE LOCATIONS AND SIZES.

DRAWING: F:\Project\30-08-016 - Porfily Water Rights Consulting\00 Misc Engineering\Cad\hole\HALE FARMS LLC 2012\30-08-016 TO 2012.dwg
PRINTED BY: rwillard on 03/08/12 02:07 PM

RECEIVED

Mar 20 2012

WATER RESOURCES DEPT
SALEM, OREGON



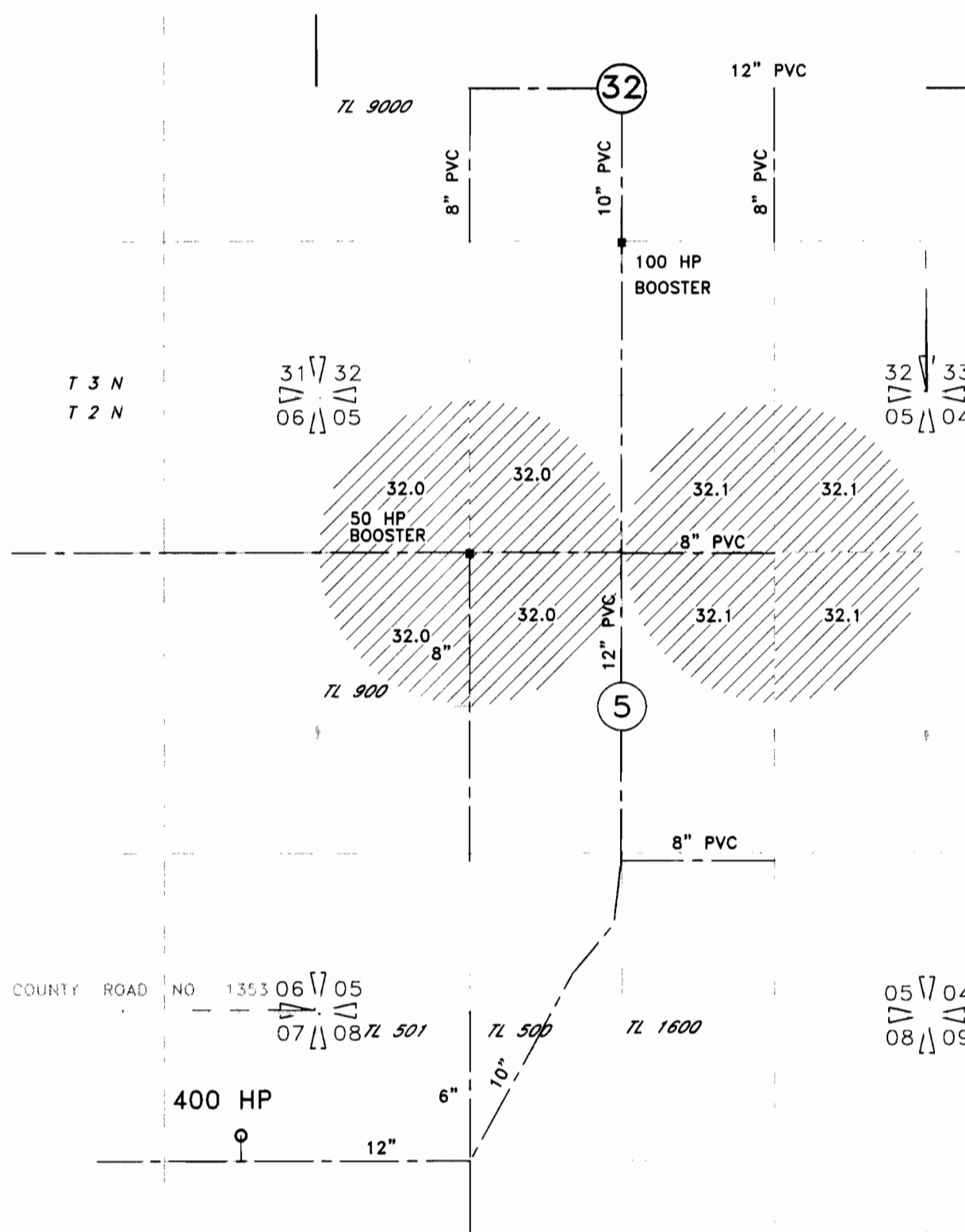
Engineers • Surveyors • Planners
2810 W. CLEARWATER AVE., STE. 201
KENNEWICK, WA 98336 (509) 783-2144

T 11379

HALE FARMS, LLC
 2012 TEMPORARY TRANSFER
 MAP 3 OF 3
 T4N, R26E WM MORROW COUNTY

T2N & T3N, R28E
 UMATILLA COUNTY

BUTTER CREEK FARM



LEGEND



256.4 AC AREA RECEIVING CERT 79482



NOTE:
 THE PURPOSE OF THIS MAP IS TO IDENTIFY THE APPROXIMATE LOCATION OF THE WATER RIGHT. IT IS NOT INTENDED TO PROVIDE INFORMATION RELATIVE TO THE LOCATION OF PROPERTY OWNERSHIP BOUNDARY LINES. PIPE LOCATIONS AND SIZES WHERE SHOWN WERE PROVIDED BY FARM OPERATIONAL PERSONNEL AND ARE APPROXIMATE LOCATIONS AND SIZES.

DRAWING: F:\Project\30-08-016 - Porfily Water Rights Consulting\--00 Misc Engineering\Cad\hale\HALE FARMS LLC 2012\30-08-016 TO 79482 2012.dwg
 PRINTED BY: rwillard on 03/08/12 02:08 PM

T 11379

RECEIVED

MAR 20 2012

WATER RESOURCES LLC
 SALEM, OREGON



Engineers • Surveyors • Planners
 2810 W. CLEARWATER AVE., STE. 201
 KENNEWICK, WA 98336 (509) 783-2144

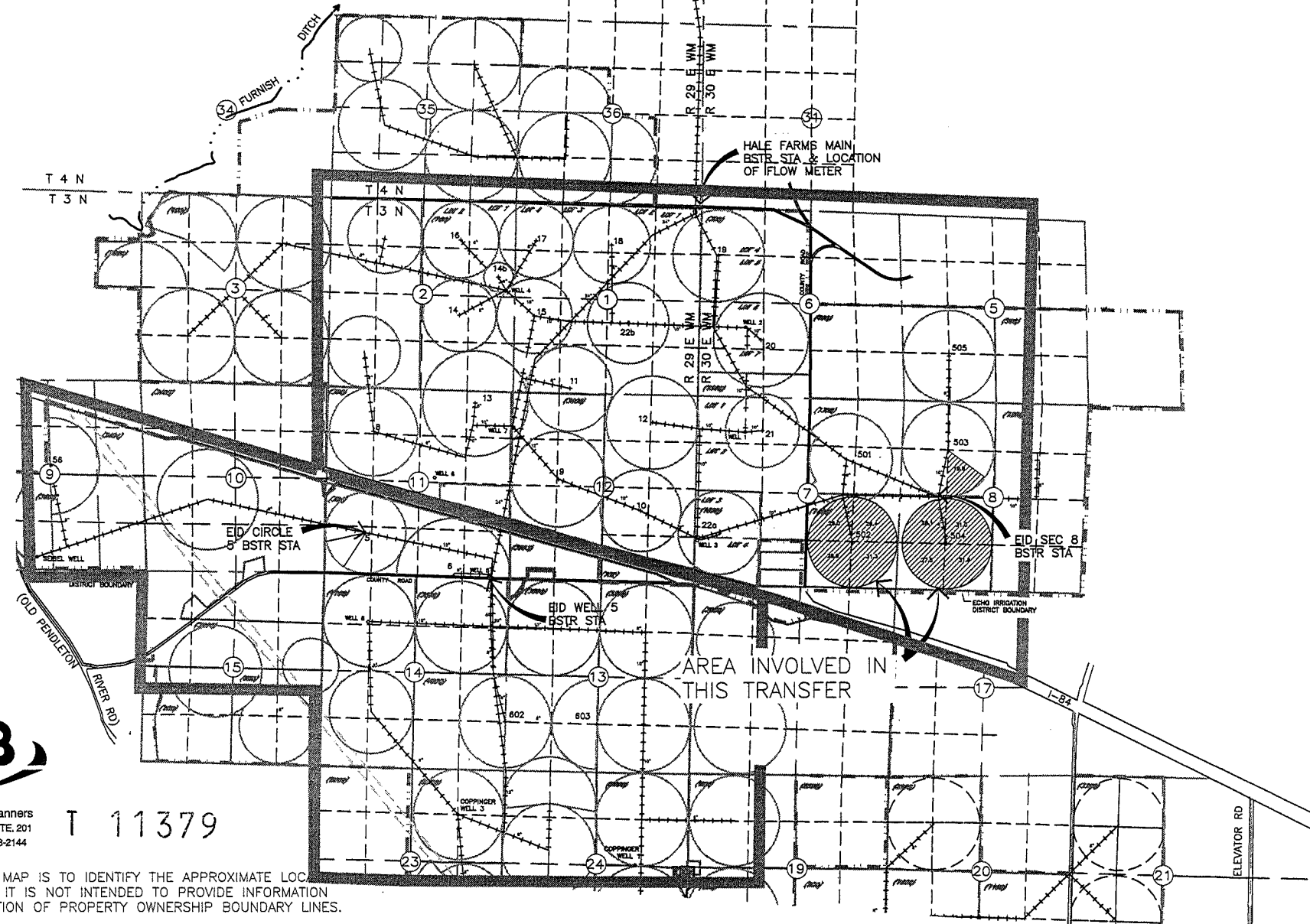
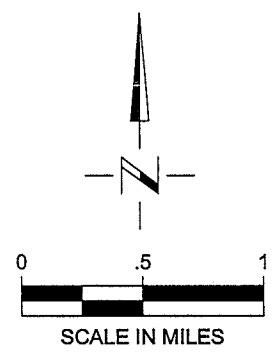
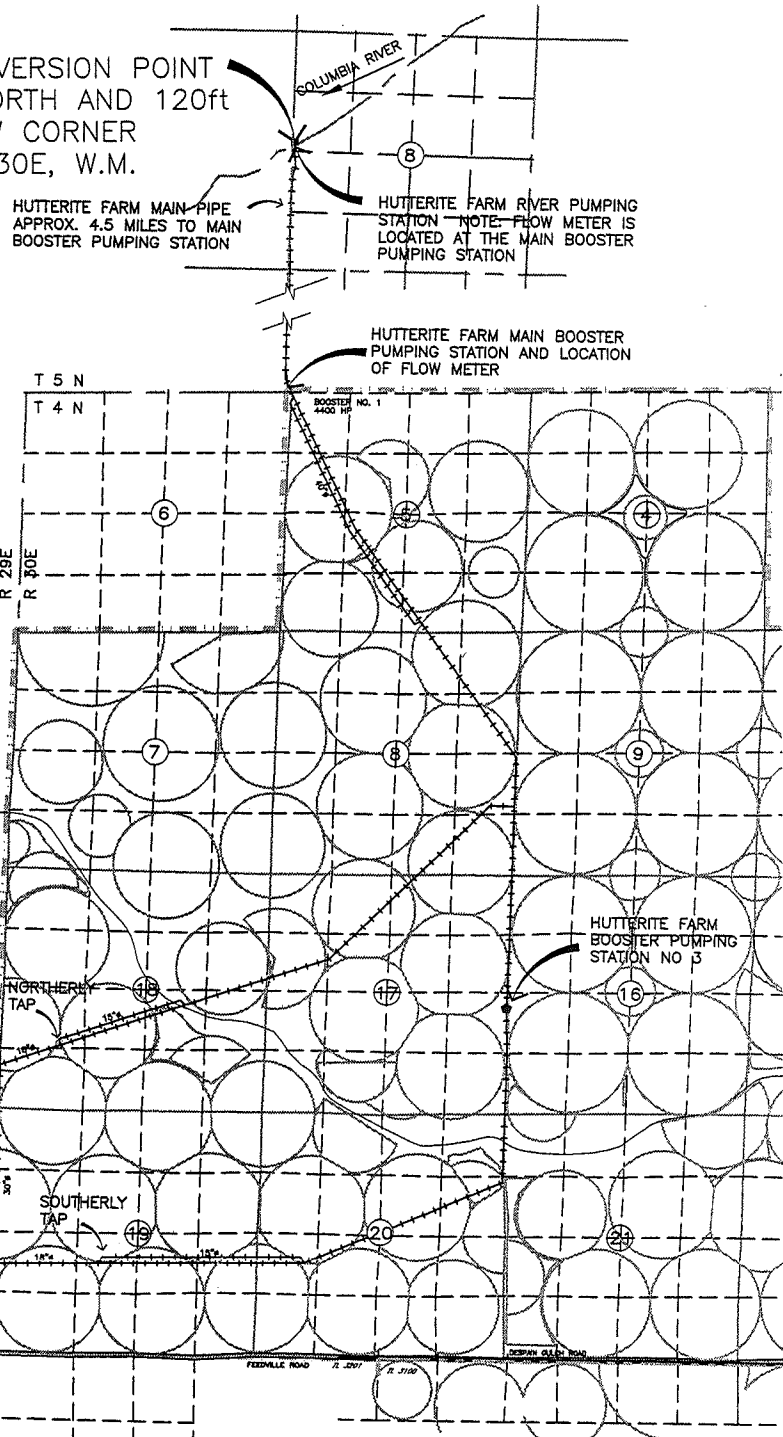
HALE FARMS, LLC
 2012 TEMPORARY TRANSFER
 COLUMBIA RIVER WATER
 HUTTERITE - ECHO ID DELIVERY SYSTEM
 MAP 1 OF 3

RECEIVED

MAR 20 2012

WATER RESOURCES DEPT
 SALEM, OREGON

COLUMBIA RIVER DIVERSION POINT
 LOCATED 2910ft NORTH AND 120ft
 EAST FROM THE SW CORNER
 SECTION 8, T5N, R30E, W.M.

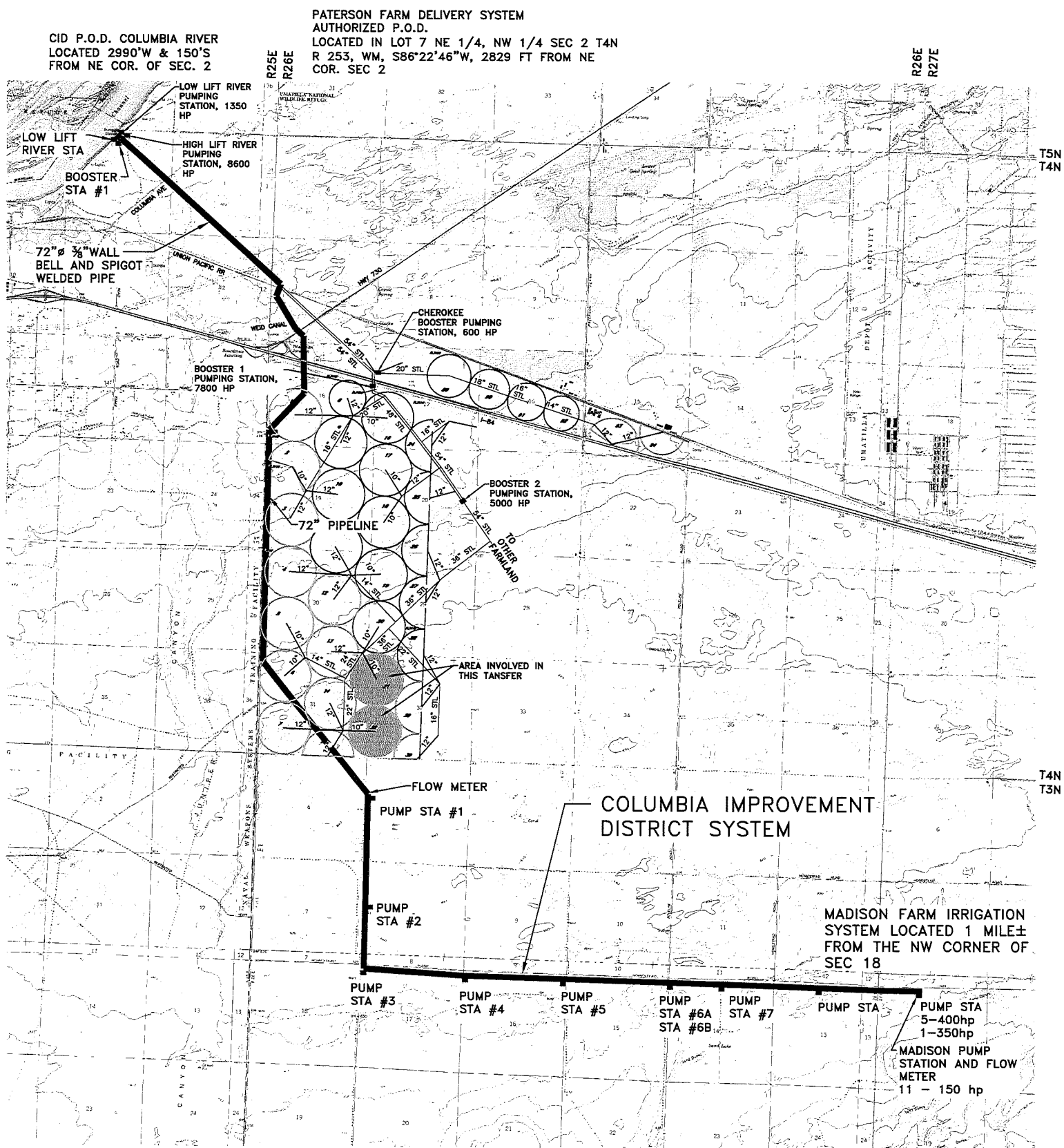


Engineers • Surveyors • Planners
 2810 W. CLEARWATER AVE., STE. 201
 KENNEWICK, WA 98336 (509) 783-2144

T 11379

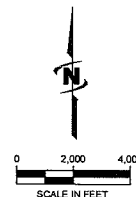
NOTE:
 THE PURPOSE OF THIS MAP IS TO IDENTIFY THE APPROXIMATE LOCATION OF THE WATER RIGHT. IT IS NOT INTENDED TO PROVIDE INFORMATION RELATIVE TO THE LOCATION OF PROPERTY OWNERSHIP BOUNDARY LINES.

HALE FARMS, LLC 2012 TEMPORARY TRANSFER COLUMBIA RIVER WATER CID AND PATERSON FARM DELIVERY SYSTEMS MAP 2 OF 3



NOTE:
THE PURPOSE OF THIS MAP IS TO IDENTIFY THE APPROXIMATE LOCATION OF THE WATER RIGHT. IT IS NOT INTENDED TO PROVIDE INFORMATION RELATIVE TO THE LOCATION OF PROPERTY OWNERSHIP BOUNDARY LINES. PIPE LOCATIONS AND SIZES WHERE SHOWN WERE PROVIDED BY FARM OPERATIONAL PERSONNEL AND ARE APPROXIMATE LOCATIONS AND SIZES.

DRAWING: I:\Project\30-08-016 - Porfily Water Rights Consulting\00 Misc Engineering\Cad\hale\HALE FARMS LLC 2012\30-08-016 HALE 12 T1.dwg
PRINTED BY: rwillard on 03/14/12 02:10 PM



RECEIVED

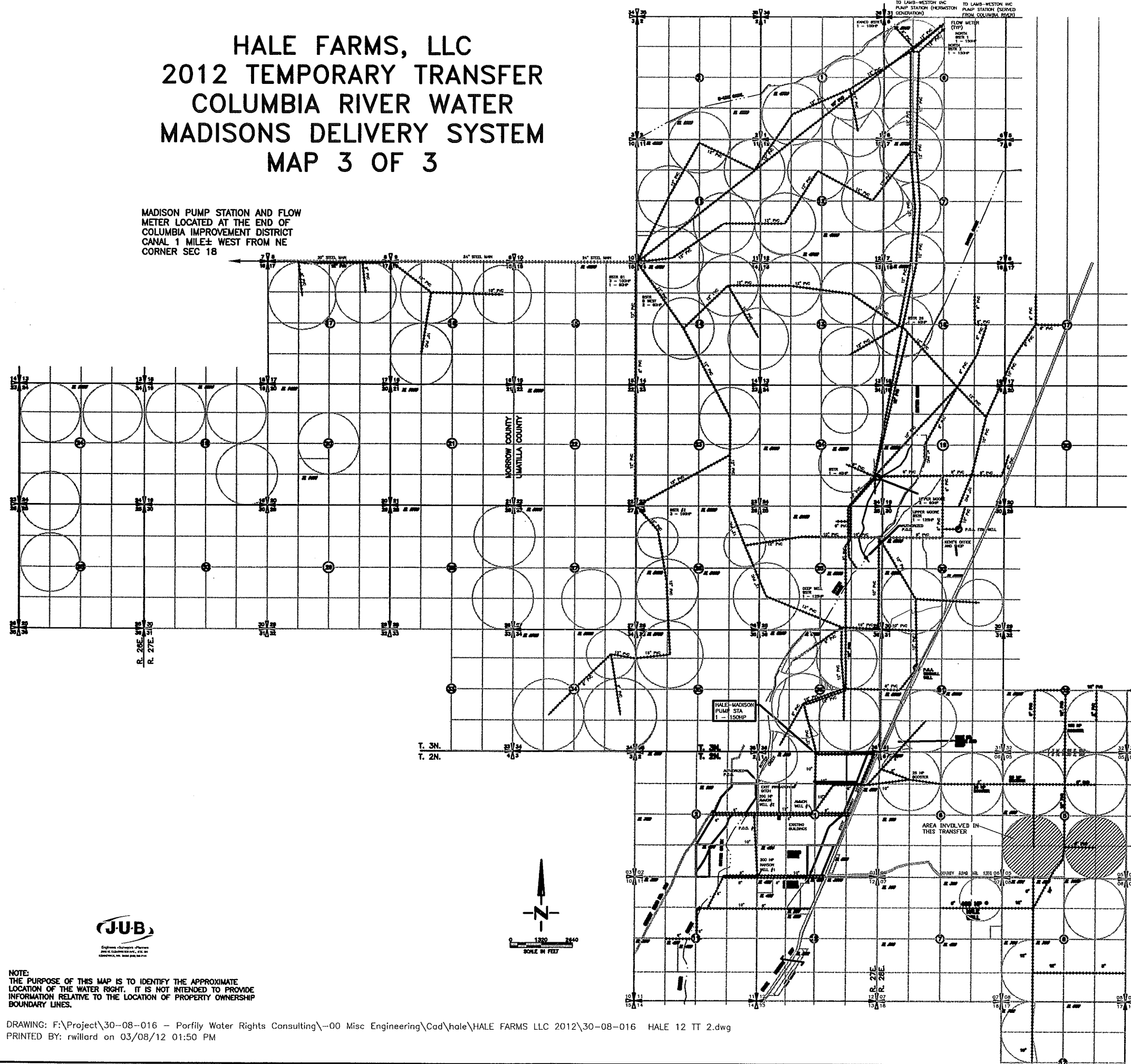
MAR 20 2012

WATER RESOURCES DEPT
SALEM, OREGON

T 11379

HALE FARMS, LLC 2012 TEMPORARY TRANSFER COLUMBIA RIVER WATER MADISONS DELIVERY SYSTEM MAP 3 OF 3

MADISON PUMP STATION AND FLOW METER LOCATED AT THE END OF COLUMBIA IMPROVEMENT DISTRICT CANAL 1 MILE± WEST FROM NE CORNER SEC 18



NOTE:
THE PURPOSE OF THIS MAP IS TO IDENTIFY THE APPROXIMATE LOCATION OF THE WATER RIGHT. IT IS NOT INTENDED TO PROVIDE INFORMATION RELATIVE TO THE LOCATION OF PROPERTY OWNERSHIP BOUNDARY LINES.

DRAWING: F:\Project\30-08-016 - Porfily Water Rights Consulting\--00 Misc Engineering\Cad\hale\HALE FARMS LLC 2012\30-08-016 HALE 12 TT 2.dwg
PRINTED BY: rwillard on 03/08/12 01:50 PM

RECEIVED

MAR 20 2012
WATER RESOURCES DEPT
SALEM, OREGON

T 11379