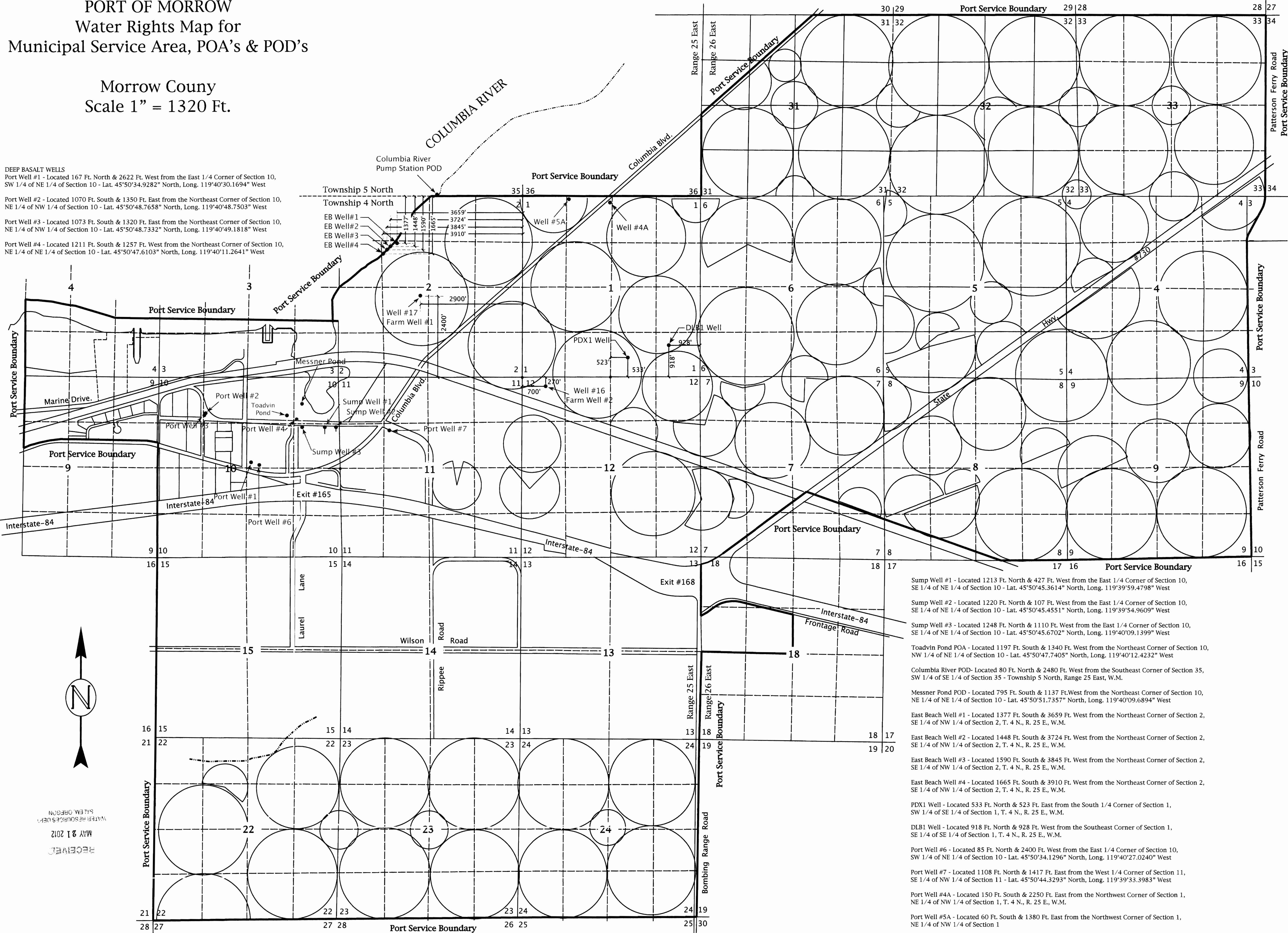


PORT OF MORROW
Water Rights Map for
Municipal Service Area, POA's & POD's

Morrow County
 Scale 1" = 1320 Ft.

DEEP BASALT WELLS
 Port Well #1 - Located 167 Ft. North & 2622 Ft. West from the East 1/4 Corner of Section 10, SW 1/4 of NE 1/4 of Section 10 - Lat. 45°50'34.9282" North, Long. 119°40'30.1694" West
 Port Well #2 - Located 1070 Ft. South & 1350 Ft. East from the Northeast Corner of Section 10, NE 1/4 of NW 1/4 of Section 10 - Lat. 45°50'48.7658" North, Long. 119°40'48.7503" West
 Port Well #3 - Located 1073 Ft. South & 1320 Ft. East from the Northeast Corner of Section 10, NE 1/4 of NW 1/4 of Section 10 - Lat. 45°50'48.7332" North, Long. 119°40'49.1818" West
 Port Well #4 - Located 1211 Ft. South & 1257 Ft. West from the Northeast Corner of Section 10, NE 1/4 of NE 1/4 of Section 10 - Lat. 45°50'47.6103" North, Long. 119°40'11.2641" West



Sump Well #1 - Located 1213 Ft. North & 427 Ft. West from the East 1/4 Corner of Section 10, SE 1/4 of NE 1/4 of Section 10 - Lat. 45°50'45.3614" North, Long. 119°39'59.4798" West
 Sump Well #2 - Located 1220 Ft. North & 107 Ft. West from the East 1/4 Corner of Section 10, SE 1/4 of NE 1/4 of Section 10 - Lat. 45°50'45.4551" North, Long. 119°39'54.9609" West
 Sump Well #3 - Located 1248 Ft. North & 1110 Ft. West from the East 1/4 Corner of Section 10, SE 1/4 of NE 1/4 of Section 10 - Lat. 45°50'45.6702" North, Long. 119°40'09.1399" West
 Toadvin Pond POA - Located 1197 Ft. South & 1340 Ft. West from the Northeast Corner of Section 10, NW 1/4 of NE 1/4 of Section 10 - Lat. 45°50'47.7405" North, Long. 119°40'12.4232" West
 Columbia River POD - Located 80 Ft. North & 2480 Ft. West from the Southeast Corner of Section 35, SW 1/4 of SE 1/4 of Section 35 - Township 5 North, Range 25 East, W.M.
 Messner Pond POD - Located 795 Ft. South & 1137 Ft. West from the Northeast Corner of Section 10, NE 1/4 of NE 1/4 of Section 10 - Lat. 45°50'51.7357" North, Long. 119°40'09.6894" West
 East Beach Well #1 - Located 1377 Ft. South & 3659 Ft. West from the Northeast Corner of Section 2, SE 1/4 of NW 1/4 of Section 2, T. 4 N., R. 25 E., W.M.
 East Beach Well #2 - Located 1448 Ft. South & 3724 Ft. West from the Northeast Corner of Section 2, SE 1/4 of NW 1/4 of Section 2, T. 4 N., R. 25 E., W.M.
 East Beach Well #3 - Located 1590 Ft. South & 3845 Ft. West from the Northeast Corner of Section 2, SE 1/4 of NW 1/4 of Section 2, T. 4 N., R. 25 E., W.M.
 East Beach Well #4 - Located 1665 Ft. South & 3910 Ft. West from the Northeast Corner of Section 2, SE 1/4 of NW 1/4 of Section 2, T. 4 N., R. 25 E., W.M.
 PDX1 Well - Located 533 Ft. North & 523 Ft. East from the South 1/4 Corner of Section 1, SW 1/4 of SE 1/4 of Section 1, T. 4 N., R. 25 E., W.M.
 DLB1 Well - Located 918 Ft. North & 928 Ft. West from the Southeast Corner of Section 1, SE 1/4 of SE 1/4 of Section 1, T. 4 N., R. 25 E., W.M.
 Port Well #6 - Located 85 Ft. North & 2400 Ft. West from the East 1/4 Corner of Section 10, SW 1/4 of NE 1/4 of Section 10 - Lat. 45°50'34.1296" North, Long. 119°40'27.0240" West
 Port Well #7 - Located 1108 Ft. North & 1417 Ft. East from the West 1/4 Corner of Section 11, SE 1/4 of NW 1/4 of Section 11 - Lat. 45°50'44.3293" North, Long. 119°39'33.3983" West
 Port Well #4A - Located 150 Ft. South & 2250 Ft. East from the Northwest Corner of Section 1, NE 1/4 of NW 1/4 of Section 1, T. 4 N., R. 25 E., W.M.
 Port Well #5A - Located 60 Ft. South & 1380 Ft. East from the Northwest Corner of Section 1, NE 1/4 of NW 1/4 of Section 1
 Well #16 (Farm Well #2) - Located 270 Ft. South & 700 Ft. East from the Northwest Corner of Section 12, NW 1/4 of NW 1/4 of Section 12
 Well #17 (Farm Well #1) - Located 2400 Ft. North & 2900 Ft. West from the Southeast Corner of Section 2, NE 1/4 of SW 1/4 of Section 2

RECEIVED
 MAY 21 2012
 WATER RESOURCES DEPT.
 SALEM, OREGON

[Signature]
 R. V. McKinnis
 State of Oregon
 Exp. 12-31-12

Rev. 05-18-12
 ENGINEERING - LAND SURVEYING - WATER RIGHTS
R. V. McKinnis ENGINEERING
 79980 Prindle Loop Road
 Hermiston, Oregon 97838
 (541) -567-2017