



SECTIONS 22, 23, 26 & 27, T1N, R39E, W.M.
UNION COUNTY



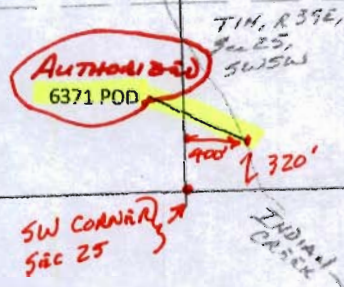
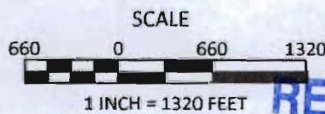
EXPLANATION

-  CERTIFICATE 6371
PRIORITY DATE: 1869
93 ACRES ON PROPERTY/14 ACRES OFF PROPERTY
-  CERTIFICATE 67358
PRIORITY DATE: JUNE 14, 1979
220.8 ACRES ON PROPERTY/ 17.6 ACRES OFF PROPERTY
- POINT OF DIVERSION
- () ACREAGE IRRIGATED IN QUARTER QUARTER SECTION
- * WATER RIGHT ACREAGE IN QUARTER QUARTER SECTION OUTSIDE OF PROPERTY

RECEIVED

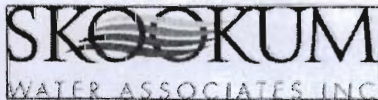
JUL 13 2012

WATER RESOURCES DEPT
SALEM, OREGON



AERIAL PHOTO SOURCE: USDA NAIP 2011
JUNE 4, 2012

THIS MAP IS NOT INTENDED TO
PROVIDE LEGAL DIMENSIONS OR
LOCATIONS OF PROPERTY
OWNERSHIP LINES



P.O. BOX 80174
PORTLAND, OR 97280
(503) 319-8926

Elgin Farm
Water Rights Map
Pine Creek Investments LLC.

JUL 20 2012

WATER RESOURCES DEPT
SALEM, OREGON

T011447

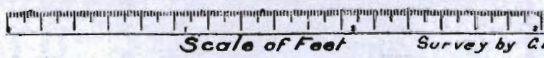
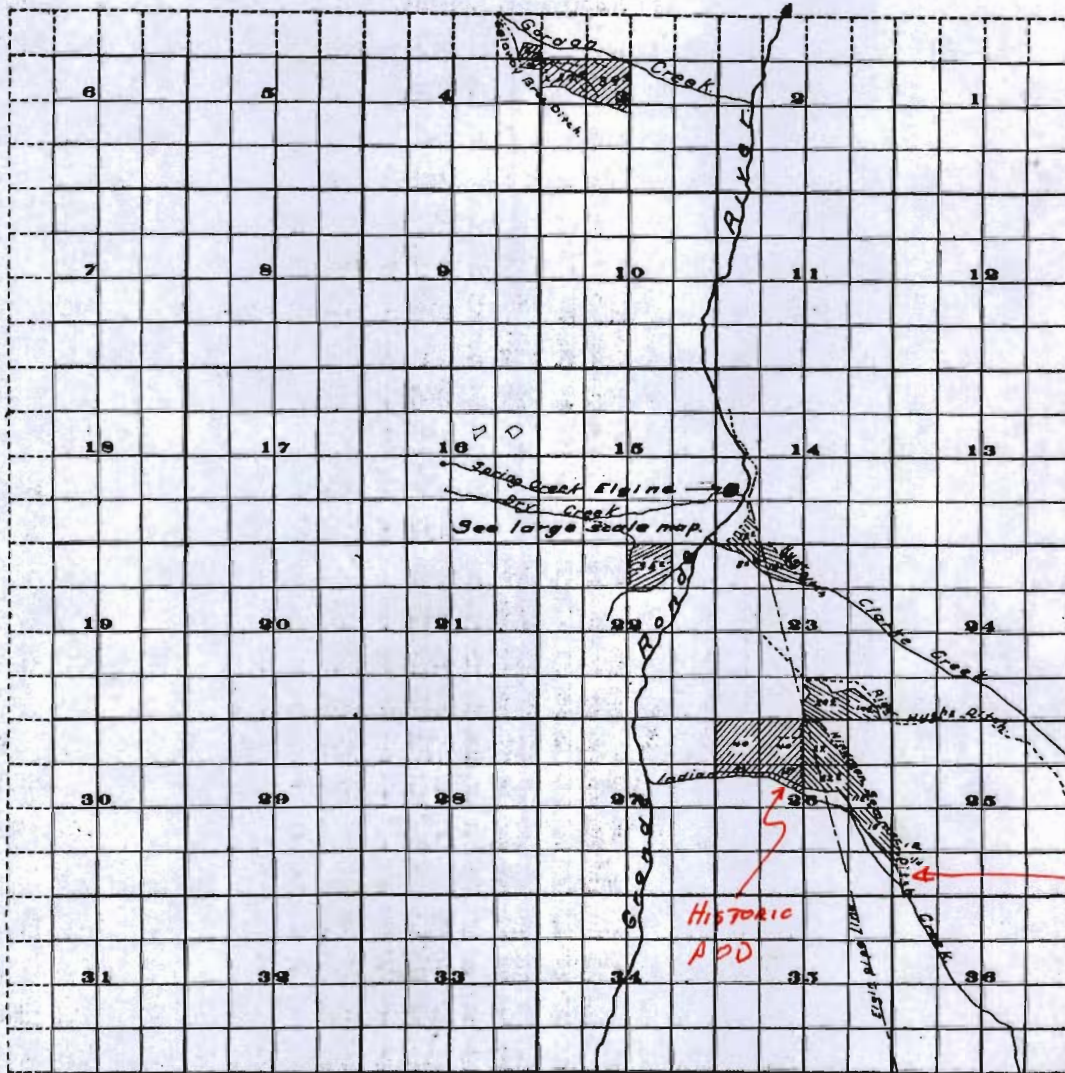
RECEIVED

JUL 20 2012

WATER RESOURCES DEPT
SALEM, OREGON

4-6-1

Township 6 North, Range 39 E.W.M.



Legend.
 [Shaded Box] Irrigated land with area.
 [Dashed Line] Ditches.
 [Wavy Line] Streams.
 [Dotted Line] Pipe-line.

Survey by G.E. Stricklin, 1912.

Adjudication
 of
 Grande Ronde River and Tributaries
 Above and Including Gordan Creek.
 John H. Lewis, State Engr
 1912.

POD of RECORD

RECEIVED

JUL 13 2012

WATER RESOURCES DEPT
SALEM, OREGON

T.1N-R.39E.

T011447

Aerial Map



CERTIFICATE 6371

map center: 45° 32' 3.46, 117° 54' 5.37
scale: 20244

26-1N-39E
Union County
Oregon

RECEIVED

JUL 20 2012



WATER RESOURCES DEPT
SALEM, OREGON

7/19/2012

Maps provided by:



©AgriData, Inc. 2012
www.AgriDataInc.com

Field borders provided by Farm Service Agency as of 5/21/2008. Aerial photography provided by Aerial Photography Field Office.

1011447

Aerial Photograph



6371 CURRENT POB

map center: 45° 32' 40.57", 117° 54' 30.41"

scale: 108.25

1N-39E
Union County
Oregon



3/9/2011

Maps provided by:
surety

©AgriData, Inc. 2011
www.AgriDataInc.com

Field borders provided by Farm Service Agency as of 5/21/2008. Aerial photography provided by Aerial Photography Field Office.

RECEIVED

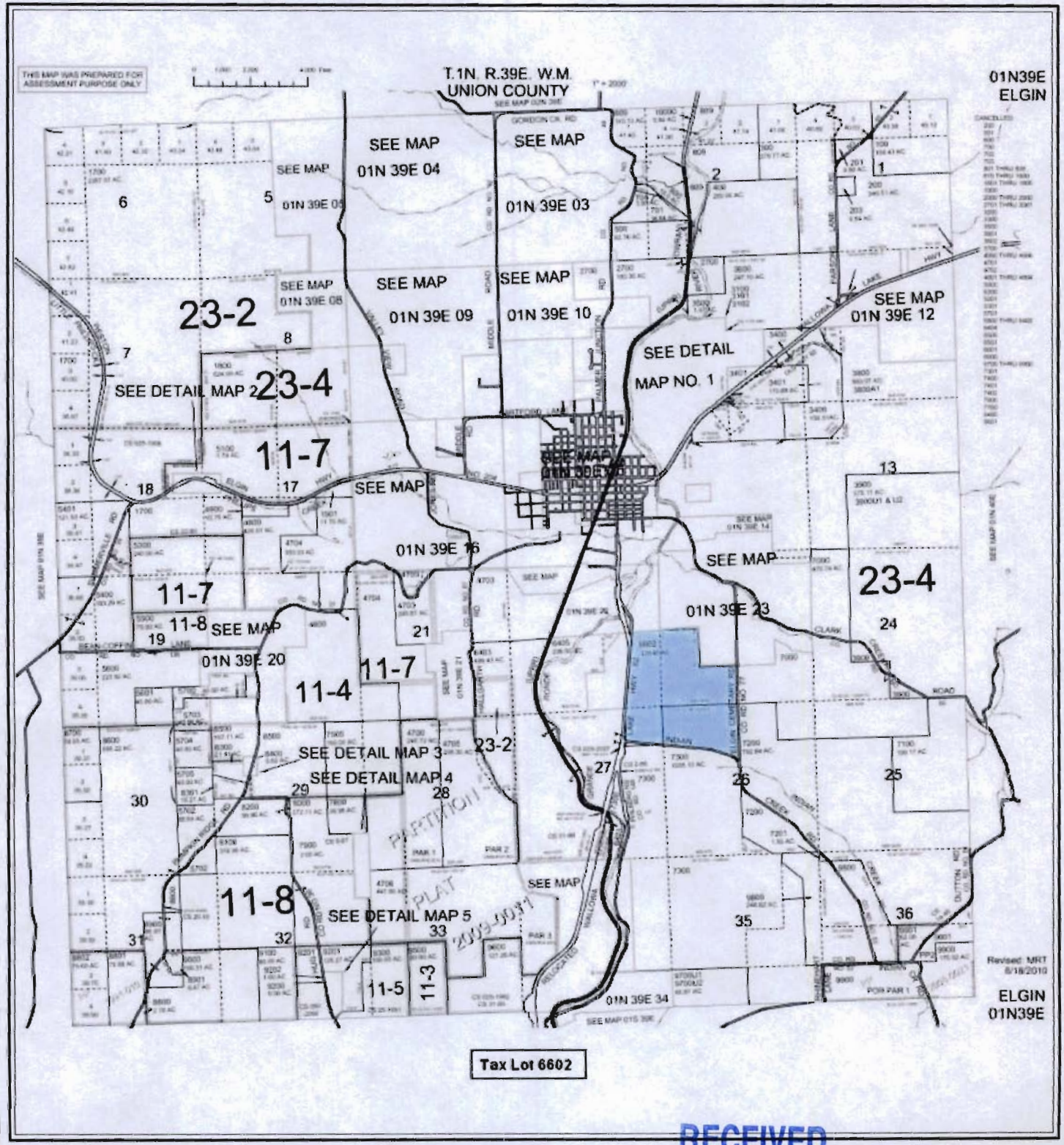
Page of

JUL 30 2012

WATER RESOURCES DEPT
SALEM, OREGON

1011447

County Assessor Map



RECEIVED

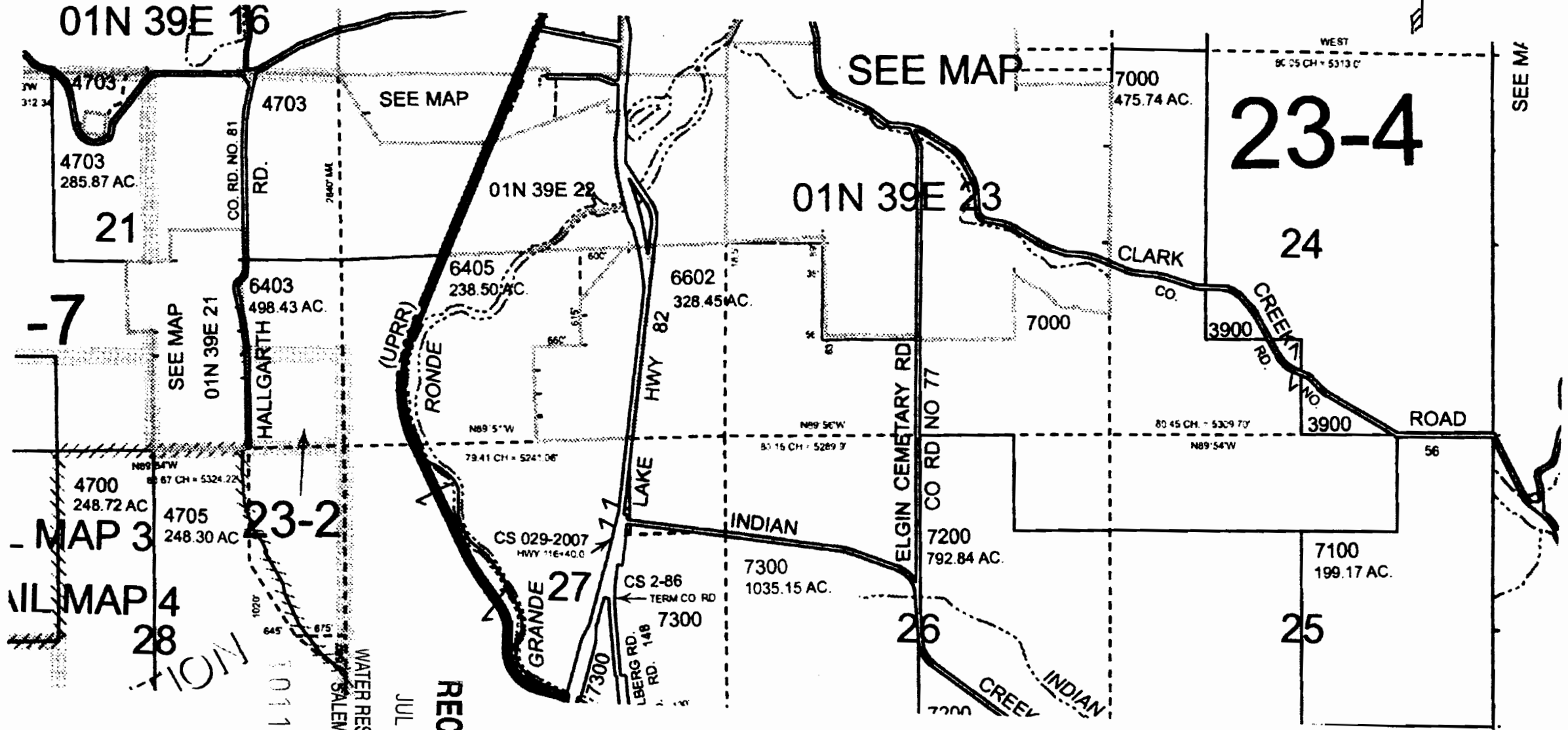
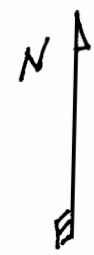
JUL 20 2012

WATER RESOURCES DEPT
SALEM, OREGON

1011447

County Tax Lot Map

1" = 1,760'



SEE MAP

SEE MAP

SEE MAP

-7

MAP 3

MAP 4

NON

1011447

RECEIVED

JUL 20 2012

WATER RESOURCES DEPT
SALEM, OREGON