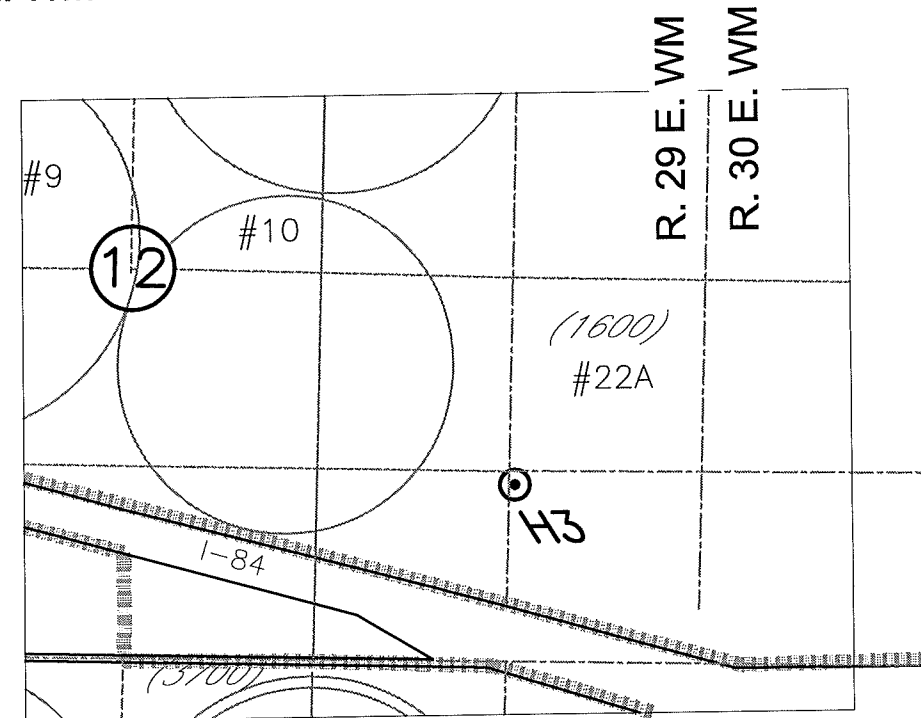
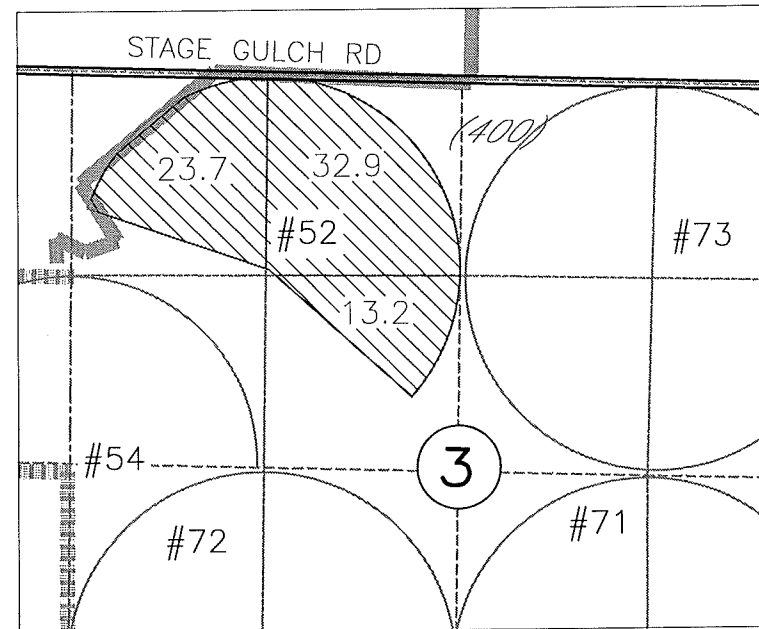


2012 ECHO ID-GEHRKE
 TEMPORARY TRANSFER
 INVOLVING A PORTION OF
 CERTIFICATE 87666
 T. 3N, R. 29 E. WM

T. 4 N
 T. 3 N

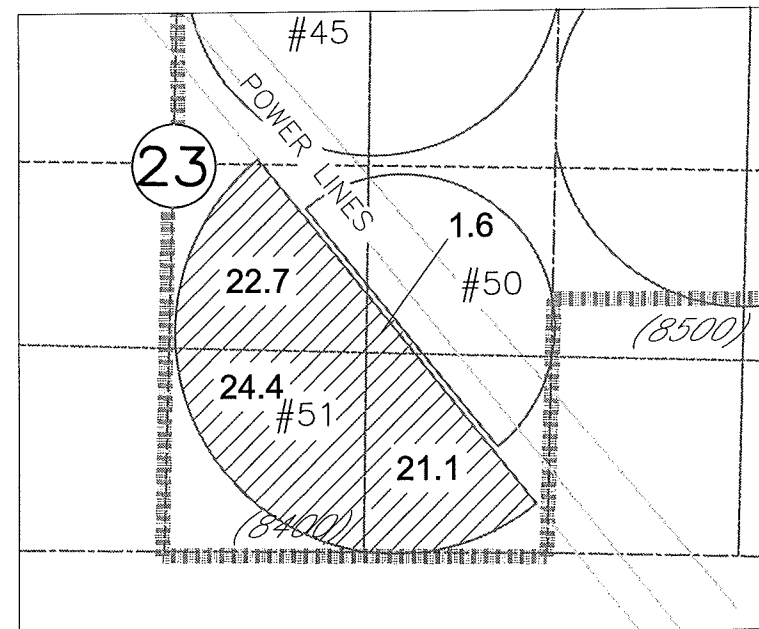
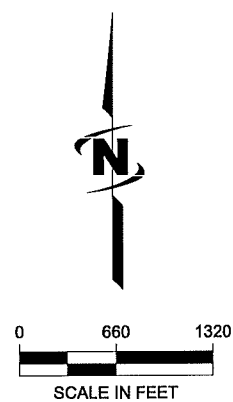


R. 29 E. WM
 R. 30 E. WM

RECEIVED BY OWRD

JUL 20 2012

SALEM, OR



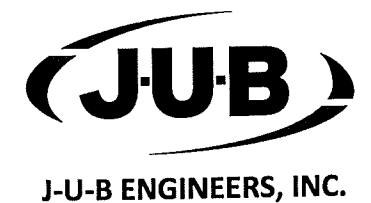
H3 HALE NO ③ 1420'S AND 40'E FROM W1/4
 COR, SEC 7 T3N R 30E W.M.

FLOW METER IS LOCATED AT THE WELL



LEGEND

- #8 CIRCLE NUMBER (TYPICAL)
- (702) TAX LOT NUMBER
- ECHO IRRIGATION DISTRICT BOUNDARY

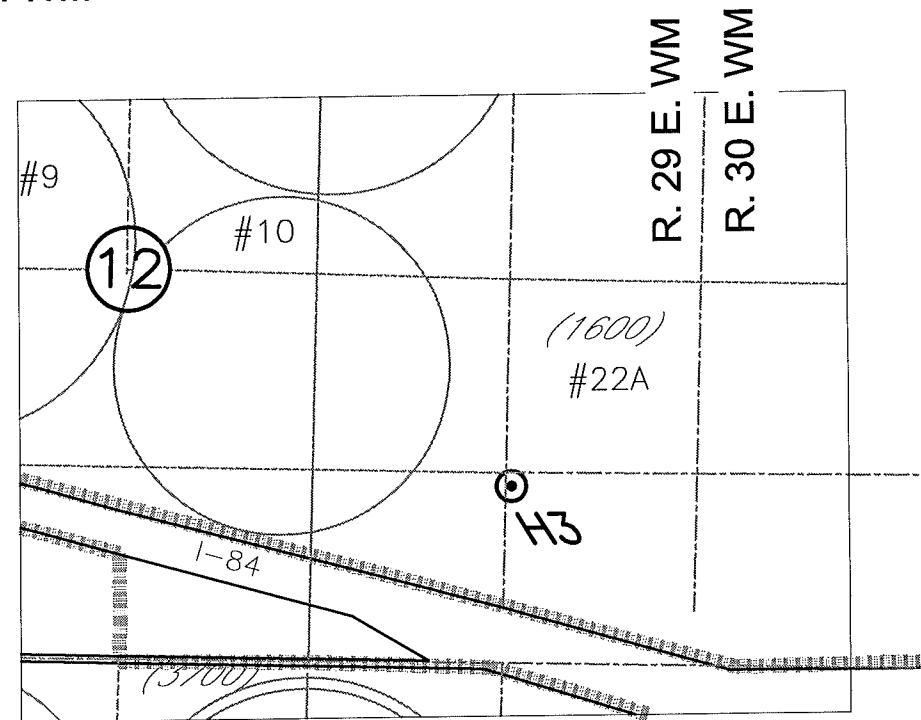
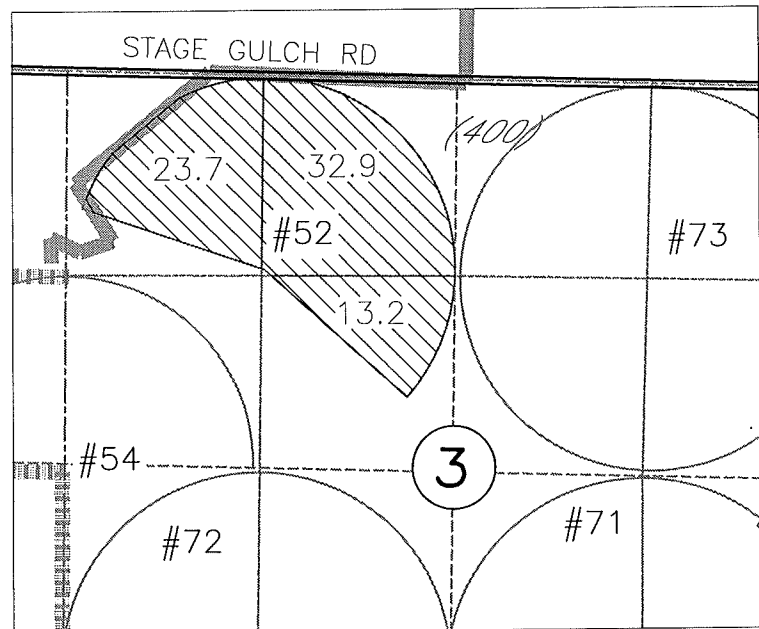


NOTE:
 THE PURPOSE OF THIS MAP IS TO IDENTIFY THE APPROXIMATE LOCATION OF THE WATER RIGHT. IT IS NOT INTENDED TO PROVIDE INFORMATION RELATIVE TO THE LOCATION OF PROPERTY OWNERSHIP BOUNDARY LINES. PIPE LOCATIONS AND SIZES WHERE SHOWN WERE PROVIDED BY FARM OPERATIONAL PERSONNEL AND ARE APPROXIMATE LOCATIONS AND SIZES.
 DRAWING: F:\Project\30-08-016 - Porfily Water Rights Consulting\--00 Misc Engineering\Cad\ECHO\Gehrke 2012\30-08-016 tt ge 12.dwg
 PRINTED BY: rwillard on 07/16/12 01:25 PM

1011448

2012 ECHO ID-GEHRKE
 TEMPORARY TRANSFER
 INVOLVING A PORTION OF
 CERTIFICATE 87666
 T. 3N, R. 29 E. WM

T. 4 N
 T. 3 N

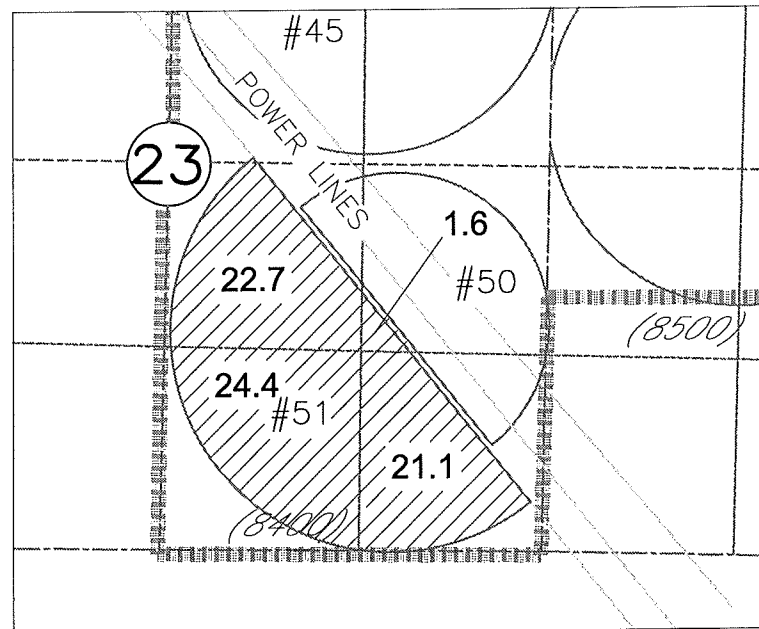
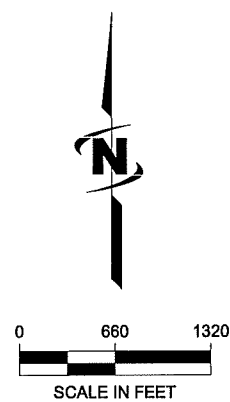


R. 29 E. WM
 R. 30 E. WM

RECEIVED BY OWRD

JUL 20 2012

SALEM, OR



H3 HALE NO ③ 1420'S AND 40'E FROM W1/4
 COR, SEC 7 T3N R 30E W.M.

FLOW METER IS LOCATED AT THE WELL

FROM		TO
	69.8 AC	
		69.8 AC

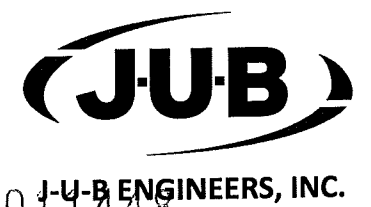
LEGEND

#8 CIRCLE NUMBER (TYPICAL)

(702) TAX LOT NUMBER

ECHO IRRIGATION DISTRICT BOUNDARY

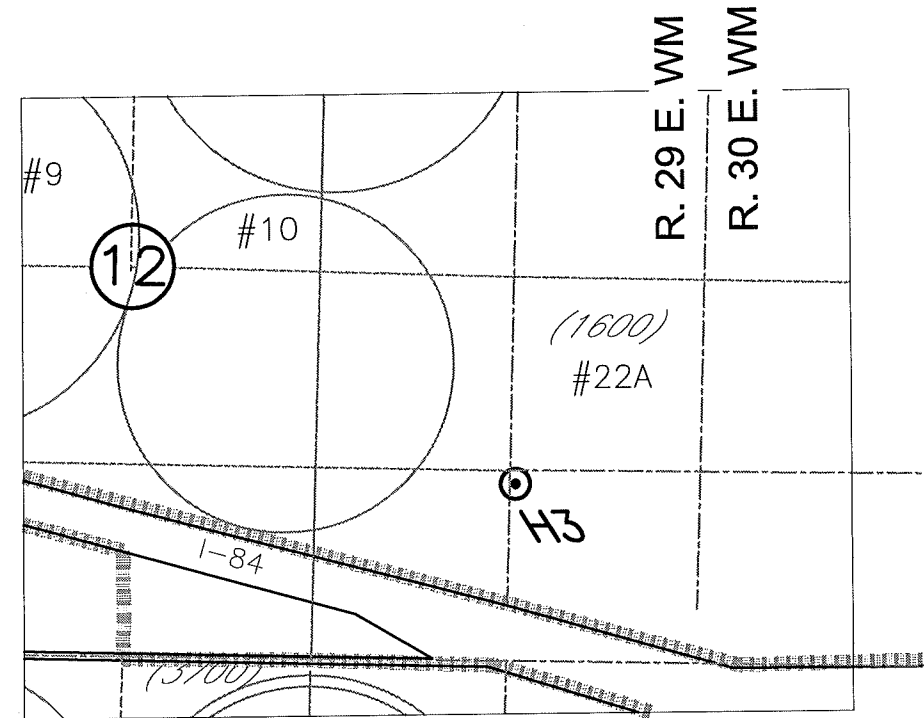
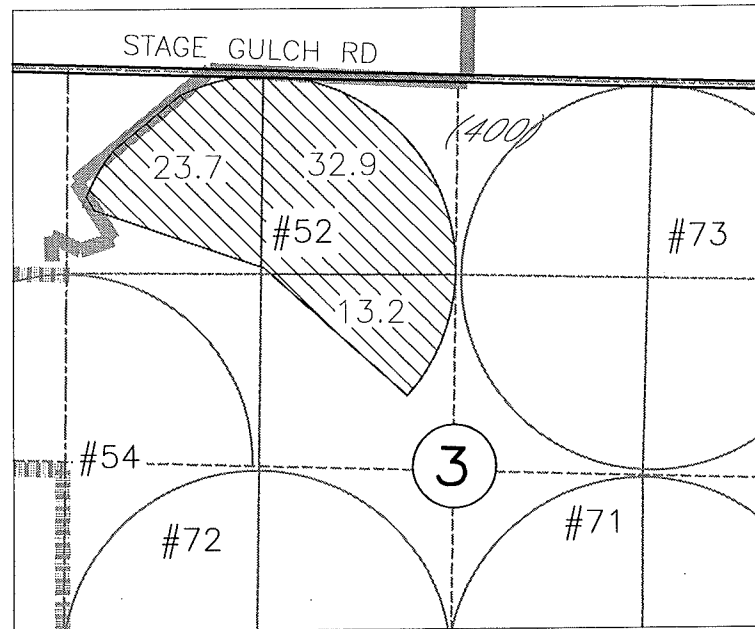
NOTE:
 THE PURPOSE OF THIS MAP IS TO IDENTIFY THE APPROXIMATE LOCATION OF THE WATER RIGHT. IT IS NOT INTENDED
 TO PROVIDE INFORMATION RELATIVE TO THE LOCATION OF PROPERTY OWNERSHIP BOUNDARY LINES. PIPE LOCATIONS
 AND SIZES WHERE SHOWN WERE PROVIDED BY FARM OPERATIONAL PERSONNEL AND ARE APPROXIMATE LOCATIONS
 AND SIZES.
 DRAWING: F:\Project\30-08-016 - Porfily Water Rights Consulting\00 Misc Engineering\Cad\ECHO\Gehrke 2012\30-08-016 tt ge 12.dwg
 PRINTED BY: rwillard on 07/16/12 01:25 PM



1011448

2012 ECHO ID-GEHRKE
 TEMPORARY TRANSFER
 INVOLVING A PORTION OF
 CERTIFICATE 87666
 T. 3N, R. 29 E. WM

T. 4 N
 T. 3 N

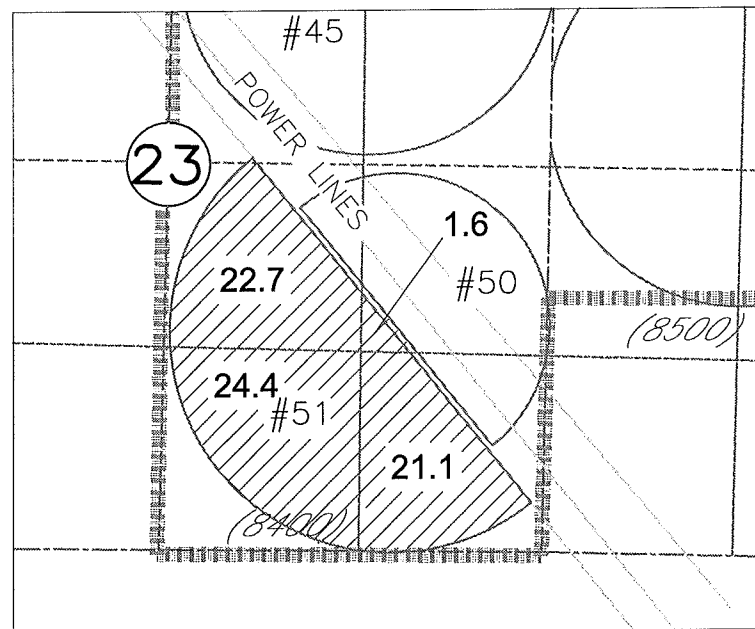
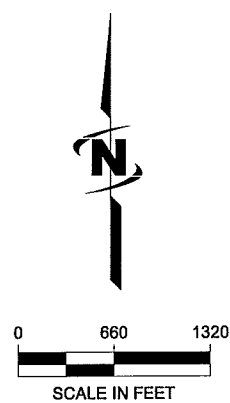


R. 29 E. WM
 R. 30 E. WM

RECEIVED BY OWRD

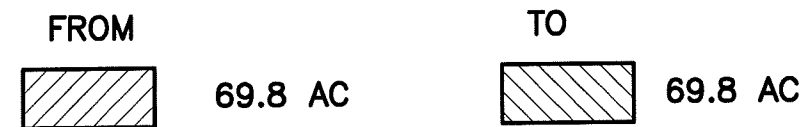
JUL 20 2012

SALEM, OR



H3 HALE NO ③ 1420'S AND 40'E FROM W1/4
 COR, SEC 7 T3N R 30E W.M.

FLOW METER IS LOCATED AT THE WELL



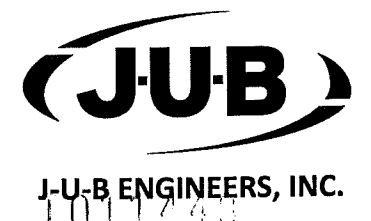
LEGEND

#8 CIRCLE NUMBER (TYPICAL)

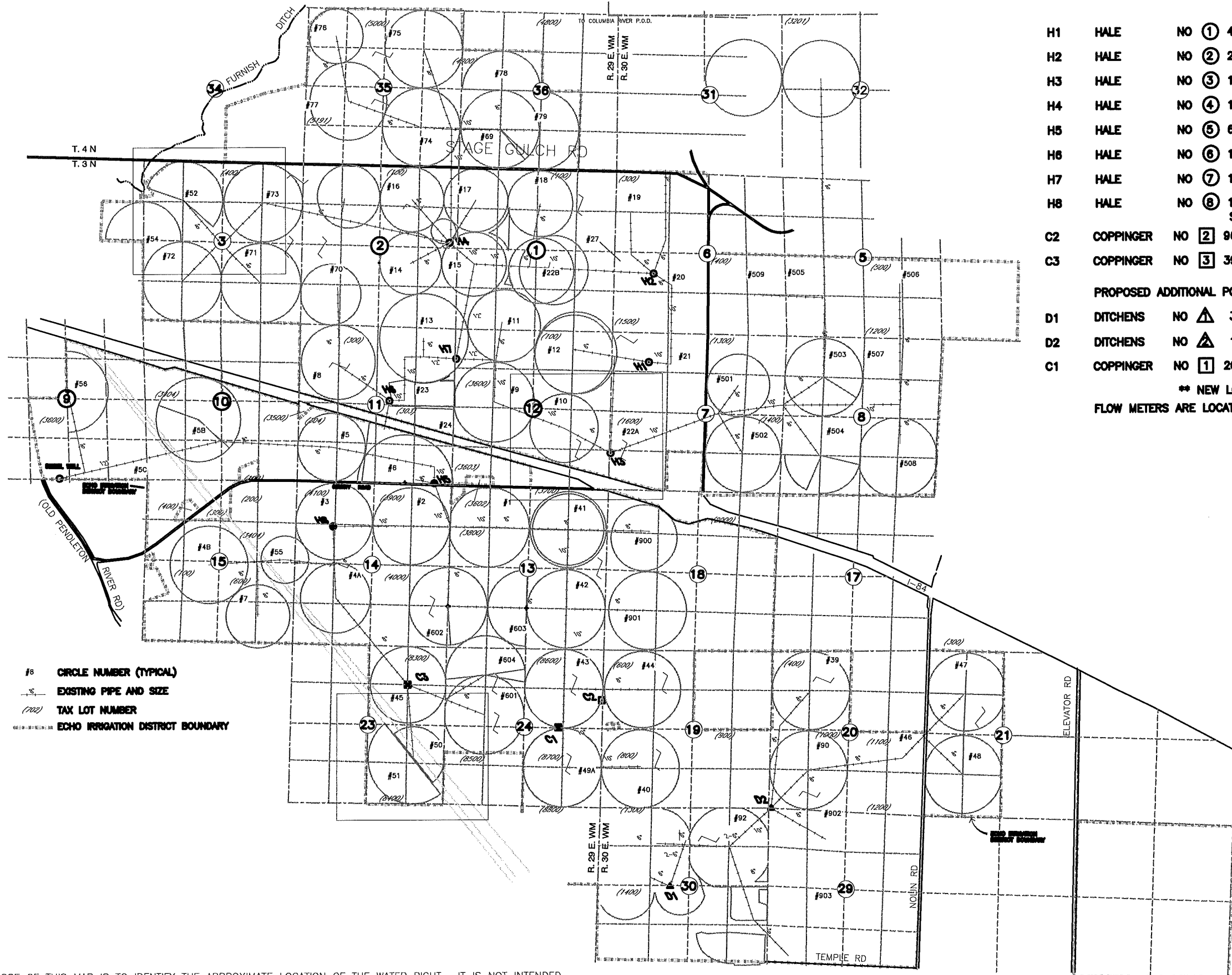
(702) TAX LOT NUMBER

ECHO IRRIGATION DISTRICT BOUNDARY

NOTE:
 THE PURPOSE OF THIS MAP IS TO IDENTIFY THE APPROXIMATE LOCATION OF THE WATER RIGHT. IT IS NOT INTENDED TO PROVIDE INFORMATION RELATIVE TO THE LOCATION OF PROPERTY OWNERSHIP BOUNDARY LINES, PIPE LOCATIONS AND SIZES WHERE SHOWN WERE PROVIDED BY FARM OPERATIONAL PERSONNEL AND ARE APPROXIMATE LOCATIONS AND SIZES.
 DRAWING: F:\Project\30-08-016 - Porfily Water Rights Consulting\00 Misc Engineering\Cad\ECHO\Gehrke 2012\30-08-016 tt ge 12.dwg
 PRINTED BY: rwillard on 07/16/12 01:25 PM



2012 ECHO IRRIGATION DISTRICT DELIVERY SYSTEM MAP



#8 CIRCLE NUMBER (TYPICAL)
 -S- EXISTING PIPE AND SIZE
 (702) TAX LOT NUMBER
 ECHO IRRIGATION DISTRICT BOUNDARY

- | | | | |
|----|-----------|------|---|
| H1 | HALE | NO ① | 4340'N AND 1830'W FROM S1/4 COR, SEC 7 T3N R 30E W.M. |
| H2 | HALE | NO ② | 2010'N AND 1330'E FROM SW COR, SEC 8 T3N R 30E W.M. |
| H3 | HALE | NO ③ | 1420'S AND 40'E FROM W1/4 COR, SEC 7 T3N R 30E W.M. |
| H4 | HALE | NO ④ | 180'N AND 260'W FROM E1/4 COR, SEC 2 T3N R 29E W.M. |
| H5 | HALE | NO ⑤ | 60'N AND 590'W FROM SE COR, SEC 11 T3N R 29E W.M. |
| H6 | HALE | NO ⑥ | 132'N AND 2190'W FROM E1/4 COR, SEC 11 T3N R 29E W.M. |
| H7 | HALE | NO ⑦ | 1010'S AND 40'E FROM NW COR, SEC 12 T3N R 29E W.M. |
| H8 | HALE | NO ⑧ | 1350'S AND 50'W FROM NE COR NW 1/4 NW 1/4 SEC 14 T3N R 29E W.M. |
| C2 | COPPINGER | NO ② | 960'N AND 30'W FROM E1/4 COR, SEC 24 T3N R 29E W.M. |
| C3 | COPPINGER | NO ③ | 3960'N AND 1320'W FROM SE COR, SEC 23 T3N R 29E W.M. |
- PROPOSED ADDITIONAL POINTS OF APPROPRIATION**
- | | | | |
|----|-----------|----|--|
| D1 | DITCHENS | NO | ▲ 30'S AND 640'W FROM THE CENTER OF SEC 30 T3N R 30E W.M. |
| D2 | DITCHENS | NO | ▲ 100'N AND 80'E FROM THE SW CORNER OF SEC 20 T3N R 30E W.M. |
| C1 | COPPINGER | NO | ① 20'N AND 1490'W FROM E1/4 COR, SEC 24 T3N R 29E W.M.** |
- ** NEW LOCATION OF COPPINGER WELL NO 1
 FLOW METERS ARE LOCATED AT THE WELLS

RECEIVED BY OWRD
 JUL 20 2012
 SALEM, OR

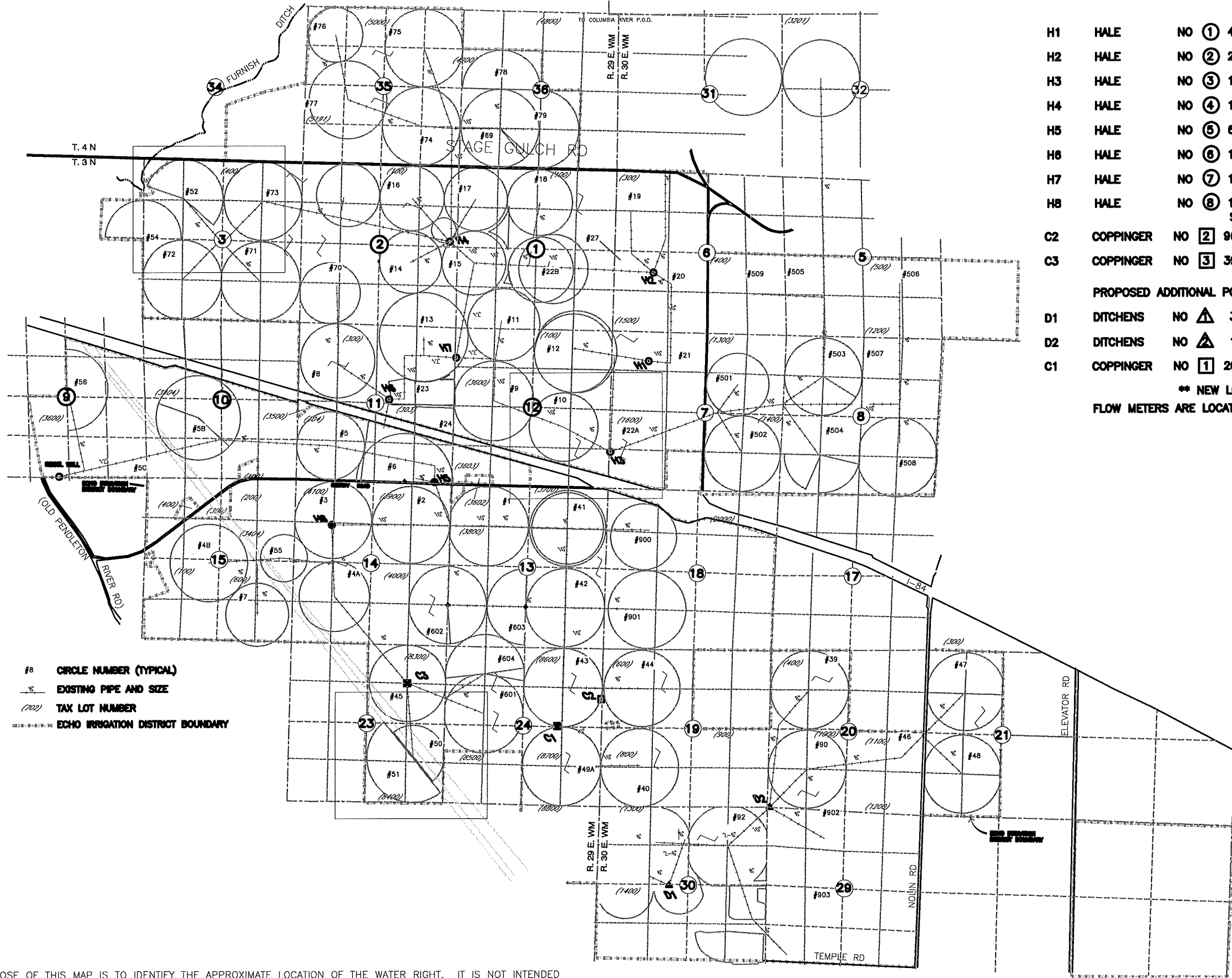
SCALE IN FEET

NOTE:
 THE PURPOSE OF THIS MAP IS TO IDENTIFY THE APPROXIMATE LOCATION OF THE WATER RIGHT. IT IS NOT INTENDED TO PROVIDE INFORMATION RELATIVE TO THE LOCATION OF PROPERTY OWNERSHIP BOUNDARY LINES. PIPE LOCATIONS AND SIZES WHERE SHOWN WERE PROVIDED BY FARM OPERATIONAL PERSONNEL AND ARE APPROXIMATE LOCATIONS AND SIZES.
 DRAWING: F:\Project\30-08-016 - Porfily Water Rights Consulting\00 Misc Engineering\Cad\ECHO\Gehrke 2012\30-08-016 tt ge 12.dwg
 PRINTED BY: rwillard on 07/16/12 01:15 PM

1011448



2012 ECHO IRRIGATION DISTRICT DELIVERY SYSTEM MAP



- | | | | |
|----|-----------|------|---|
| H1 | HALE | NO ① | 4340'N AND 1830'W FROM S1/4 COR, SEC 7 T3N R 30E W.M. |
| H2 | HALE | NO ② | 2010'N AND 1330'E FROM SW COR, SEC 6 T3N R 30E W.M. |
| H3 | HALE | NO ③ | 1420'S AND 40'E FROM W1/4 COR, SEC 7 T3N R 30E W.M. |
| H4 | HALE | NO ④ | 180'N AND 260'W FROM E1/4 COR, SEC 2 T3N R 29E W.M. |
| H5 | HALE | NO ⑤ | 60'N AND 590'W FROM SE COR, SEC 11 T3N R 29E W.M. |
| H6 | HALE | NO ⑥ | 132'N AND 2190'W FROM E1/4 COR, SEC 11 T3N R 29E W.M. |
| H7 | HALE | NO ⑦ | 1010'S AND 40'E FROM NW COR, SEC 12 T3N R 29E W.M. |
| H8 | HALE | NO ⑧ | 1350'S AND 50'W FROM NE COR NW 1/4 NW 1/4 SEC 14 T3N R 29E W.M. |
| C2 | COPPINGER | NO ② | 960'N AND 30'W FROM E1/4 COR, SEC 24 T3N R 29E W.M. |
| C3 | COPPINGER | NO ③ | 3980'N AND 1320'W FROM SE COR, SEC 23 T3N R 29E W.M. |

PROPOSED ADDITIONAL POINTS OF APPROPRIATION

- | | | | |
|----|-----------|------|--|
| D1 | DITCHENS | NO ⚠ | 30'S AND 640'W FROM THE CENTER OF SEC 30 T3N R 30E W.M. |
| D2 | DITCHENS | NO ⚠ | 100'N AND 80'E FROM THE SW CORNER OF SEC 20 T3N R 30E W.M. |
| C1 | COPPINGER | NO ① | 20'N AND 1490'W FROM E1/4 COR, SEC 24 T3N R 29E W.M.** |

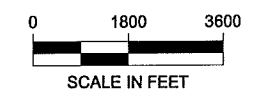
** NEW LOCATION OF COPPINGER WELL NO 1

FLOW METERS ARE LOCATED AT THE WELLS

RECEIVED BY OWRD

JUL 20 2012

SALEM, OR



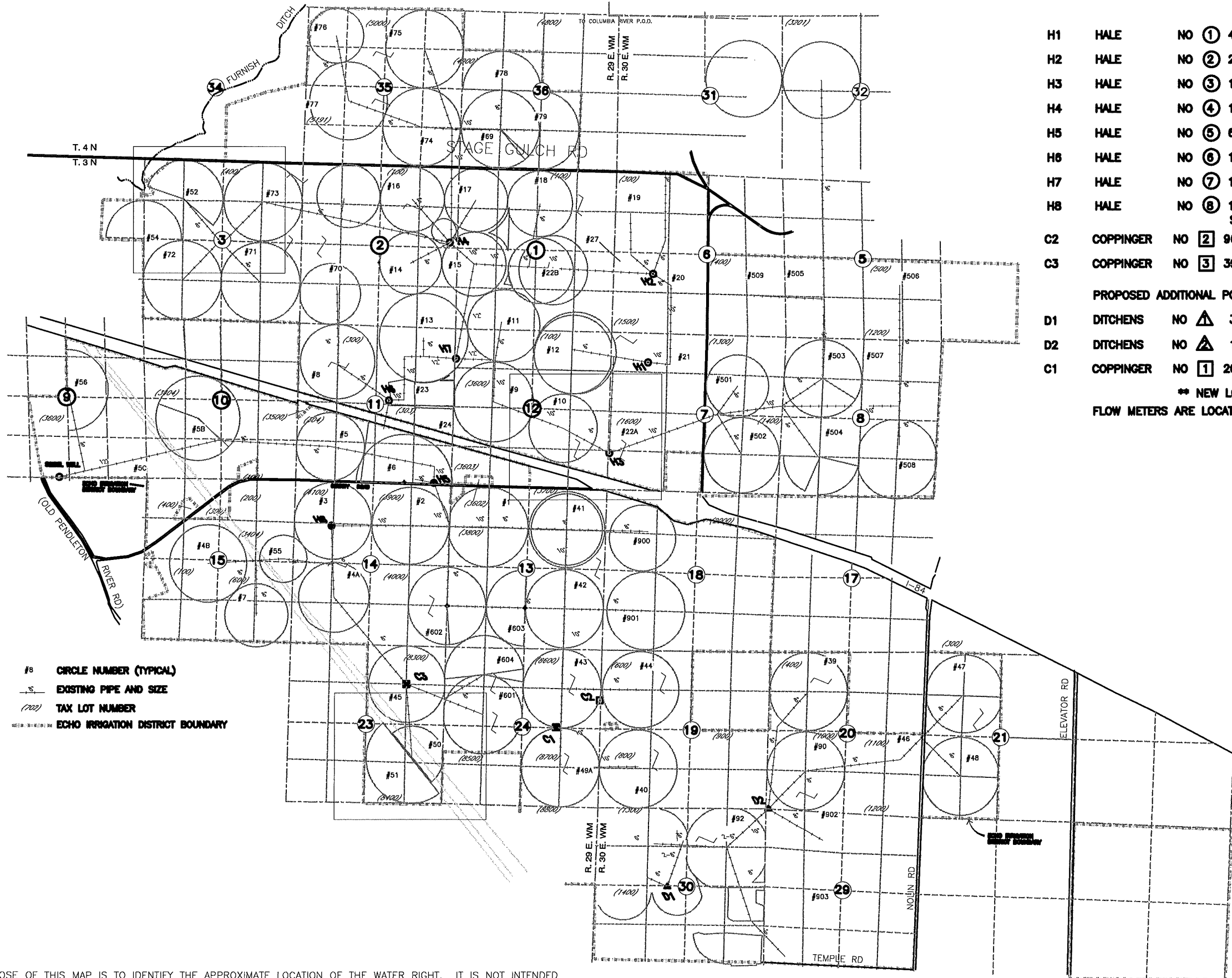
- #8 CIRCLE NUMBER (TYPICAL)
- EXISTING PIPE AND SIZE
- (702) TAX LOT NUMBER
- ECHO IRRIGATION DISTRICT BOUNDARY

NOTE:
THE PURPOSE OF THIS MAP IS TO IDENTIFY THE APPROXIMATE LOCATION OF THE WATER RIGHT. IT IS NOT INTENDED TO PROVIDE INFORMATION RELATIVE TO THE LOCATION OF PROPERTY OWNERSHIP BOUNDARY LINES. PIPE LOCATIONS AND SIZES WHERE SHOWN WERE PROVIDED BY FARM OPERATIONAL PERSONNEL AND ARE APPROXIMATE LOCATIONS AND SIZES.
DRAWING: F:\Project\30-08-016 - Porfily Water Rights Consulting\00 Misc Engineering\Cad\ECHO\Gehrke 2012\30-08-016 tt ge 12.dwg
PRINTED BY: rwillard on 07/16/12 01:15 PM

1011448



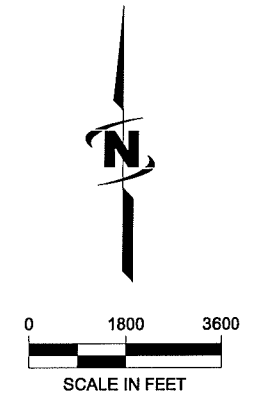
2012 ECHO IRRIGATION DISTRICT DELIVERY SYSTEM MAP



#8 CIRCLE NUMBER (TYPICAL)
 12" EXISTING PIPE AND SIZE
 (702) TAX LOT NUMBER
 --- ECHO IRRIGATION DISTRICT BOUNDARY

- | | | | |
|--|-----------|------|---|
| H1 | HALE | NO ① | 4340'N AND 1830'W FROM S1/4 COR, SEC 7 T3N R 30E W.M. |
| H2 | HALE | NO ② | 2010'N AND 1330'E FROM SW COR, SEC 6 T3N R 30E W.M. |
| H3 | HALE | NO ③ | 1420'S AND 40'E FROM W1/4 COR, SEC 7 T3N R 30E W.M. |
| H4 | HALE | NO ④ | 180'N AND 280'W FROM E1/4 COR, SEC 2 T3N R 29E W.M. |
| H5 | HALE | NO ⑤ | 60'N AND 590'W FROM SE COR, SEC 11 T3N R 29E W.M. |
| H6 | HALE | NO ⑥ | 132'N AND 2190'W FROM E1/4 COR, SEC 11 T3N R 29E W.M. |
| H7 | HALE | NO ⑦ | 1010'S AND 40'E FROM NW COR, SEC 12 T3N R 29E W.M. |
| H8 | HALE | NO ⑧ | 1350'S AND 50'W FROM NE COR NW 1/4 NW 1/4 SEC 14 T3N R 29E W.M. |
| C2 | COPPINGER | NO ② | 960'N AND 30'W FROM E1/4 COR, SEC 24 T3N R 29E W.M. |
| C3 | COPPINGER | NO ③ | 3960'N AND 1320'W FROM SE COR, SEC 23 T3N R 29E W.M. |
| PROPOSED ADDITIONAL POINTS OF APPROPRIATION | | | |
| D1 | DITCHENS | NO ① | 30'S AND 640'W FROM THE CENTER OF SEC 30 T3N R 30E W.M. |
| D2 | DITCHENS | NO ② | 100'N AND 80'E FROM THE SW CORNER OF SEC 20 T3N R 30E W.M. |
| C1 | COPPINGER | NO ① | 20'N AND 1490'W FROM E1/4 COR, SEC 24 T3N R 29E W.M.** |
| ** NEW LOCATION OF COPPINGER WELL NO 1 | | | |
| FLOW METERS ARE LOCATED AT THE WELLS | | | |

RECEIVED BY OWRD
 JUL 20 2012
 SALEM, OR



NOTE:
 THE PURPOSE OF THIS MAP IS TO IDENTIFY THE APPROXIMATE LOCATION OF THE WATER RIGHT. IT IS NOT INTENDED TO PROVIDE INFORMATION RELATIVE TO THE LOCATION OF PROPERTY OWNERSHIP BOUNDARY LINES. PIPE LOCATIONS AND SIZES WHERE SHOWN WERE PROVIDED BY FARM OPERATIONAL PERSONNEL AND ARE APPROXIMATE LOCATIONS AND SIZES.
 DRAWING: F:\Project\30-08-016 - Porfily Water Rights Consulting\00 Misc Engineering\Cad\ECHO\Gehrke 2012\30-08-016 tt ge 12.dwg
 PRINTED BY: rwillard on 07/16/12 01:15 PM

1011448

