



RECEIVED BY OWRD

JEFFERSON COUNTY SEC.33 T13S R13E

SEP 21 2012

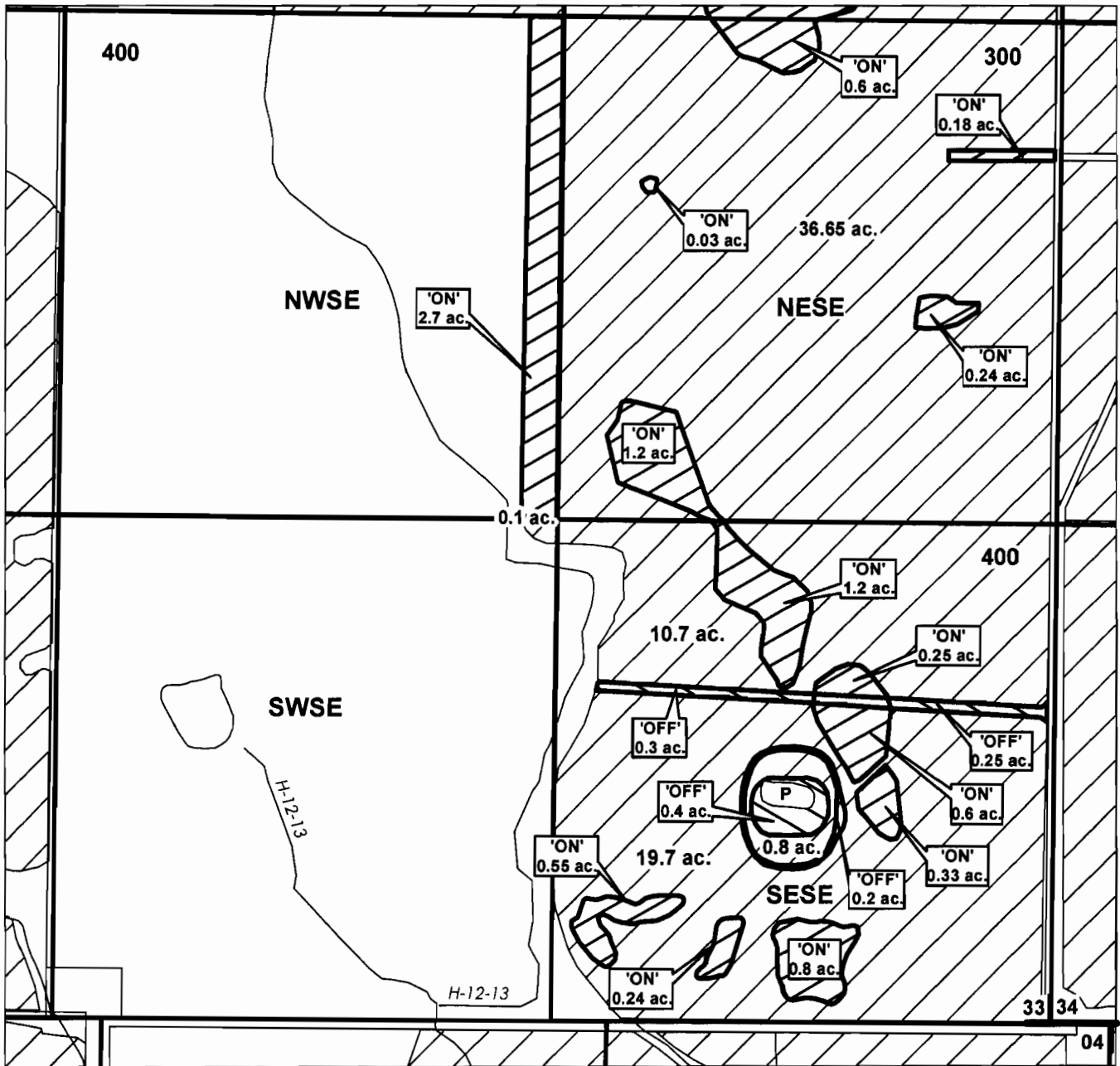
SCALE - 1" = 400'

SALEM, OR

	EXISTING WATER RIGHTS
	OFF LANDS
	ON LANDS

"OFF / ON" MAP

SE 1/4



APPLICATION FOR WATER RIGHTS TRANSFER

COID / PHILIP & PENELOPE KNIGHT

TAXLOT #: 300, 400

8.92 ACRES

DATE: 05-21-12

FILE: I:\TRANSFER\WRTRANS12\T-2012-013\131333_SE

**DESCHUTES COUNTY
SEC.16 T14S R13E**

RECEIVED BY OWRD

SCALE - 1" = 400'

SEP 21 2012

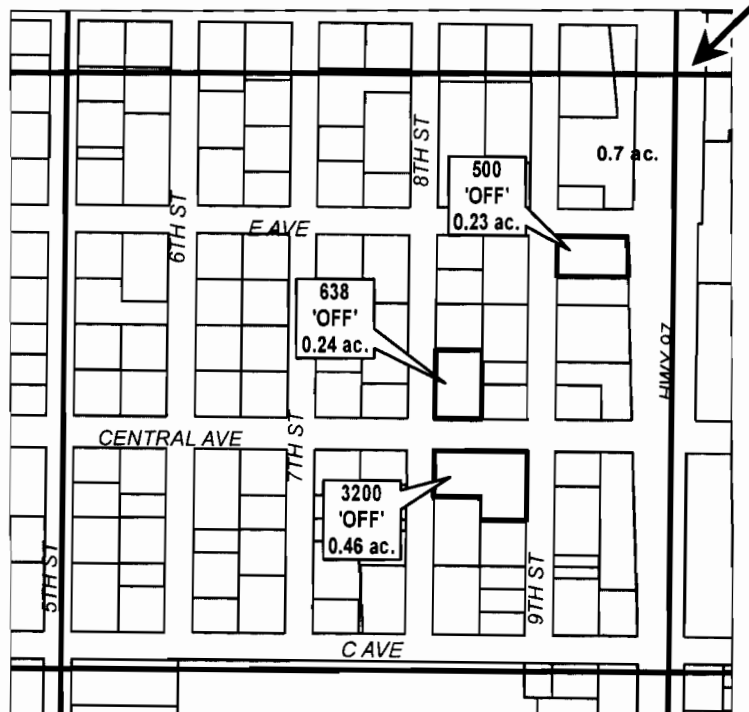


SALEM, OR

NE 1/4 OF THE SW 1/4

DISTRICT INTERNAL
NOTICE #: T-2012-013

C 1/4 COR



# ac.	'OFF' LAND PARCELS
# ac.	PARCELS W/ WATER RIGHTS

"OFF" MAP



APPLICATION FOR WATER RIGHTS TRANSFER

COID / PHILIP & PENELOPE KNIGHT

TAXLOT #: 500, 638, 3200

0.93 ACRES

DATE: 05-21-12

FILE I:\TRANSFER\WR\TRANS12\T-2012-013\141316_NESW

DESCHUTES COUNTY SEC.17 T14S R13E

RECEIVED BY OWRD

SCALE - 1" = 400'



SEP 21 2012

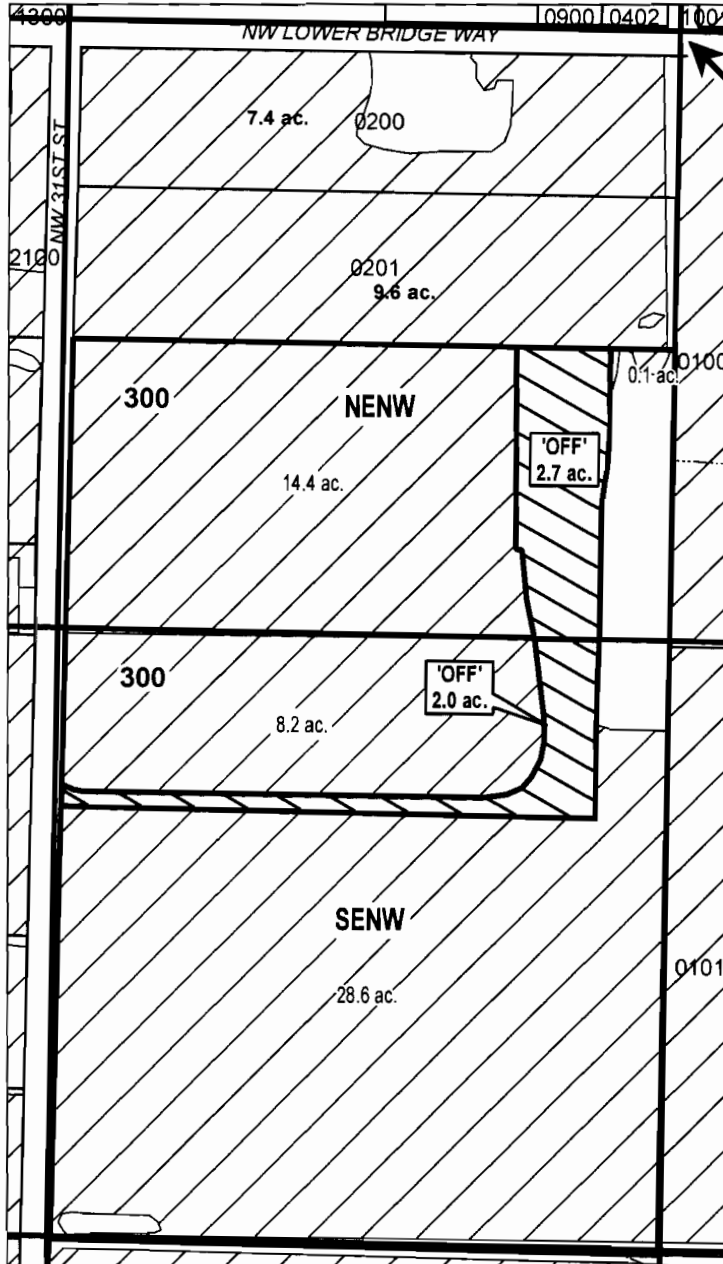
SALEM, OR



NE 1/4 OF THE NW 1/4; SE 1/4 OF THE NW 1/4

DISTRICT INTERNAL
NOTICE #: T-2012-013

-  EXISTING WATER RIGHTS
-  OFF LANDS



"OFF" MAP

CENTRAL OREGON



IRRIGATION DISTRICT

APPLICATION FOR WATER RIGHTS TRANSFER

PENNY & I LLC / PHILIP & PENELOPE KNIGHT

TAXLOT #: 300

4.7 ACRES

DATE: 05-22-12

FILE: I:\TRANSFER\WRTRANS12\T-2012-013\141317_ENW

DESCHUTES COUNTY SEC. 21 T14S R13E

RECEIVED BY OWRD

SCALE - 1" = 400'

SEP 21 2012

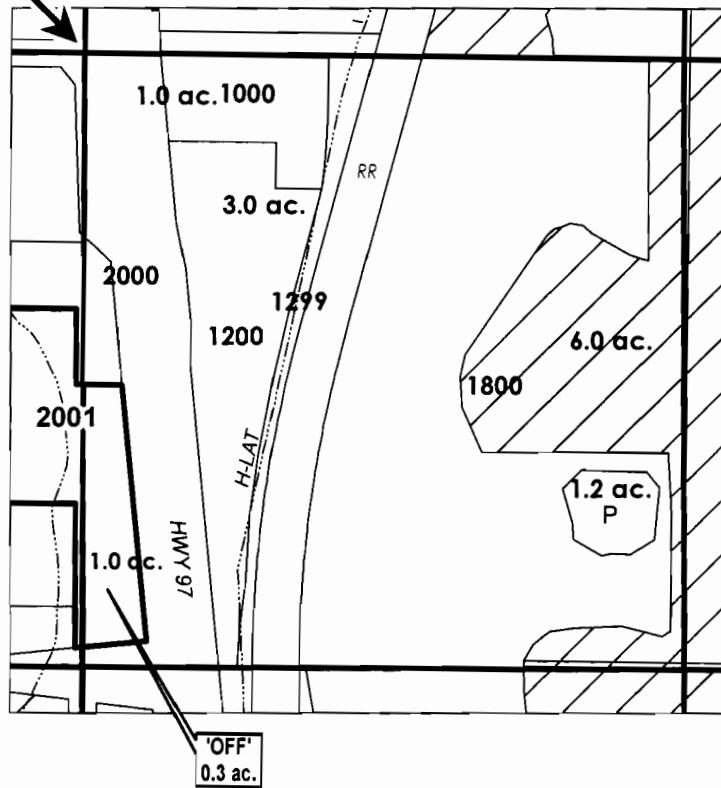


NW 1/4 OF THE SE 1/4

SALEM, OR

DISTRICT INTERNAL
NOTICE #: T-2012-020

C 1/4 COR



# ac.	'OFF' LAND PARCELS
# ac.	PARCELS W/ WATER RIGHTS
	EXISTING WATER RIGHTS
	POND

"OFF" MAP



APPLICATION FOR WATER RIGHTS TRANSFER

GEORGE D. & JANICE K. ORTMAN /COID

TAXLOT #: 2001

0.3 ACRES

Date: 8/31/2012

FILE: I:\TRANSFER\WRTRANS12\141321_NWSE

DESCHUTES COUNTY SEC.21 T14S R13E

RECEIVED BY OWRD

SCALE - 1" = 400'

SEP 21 2012

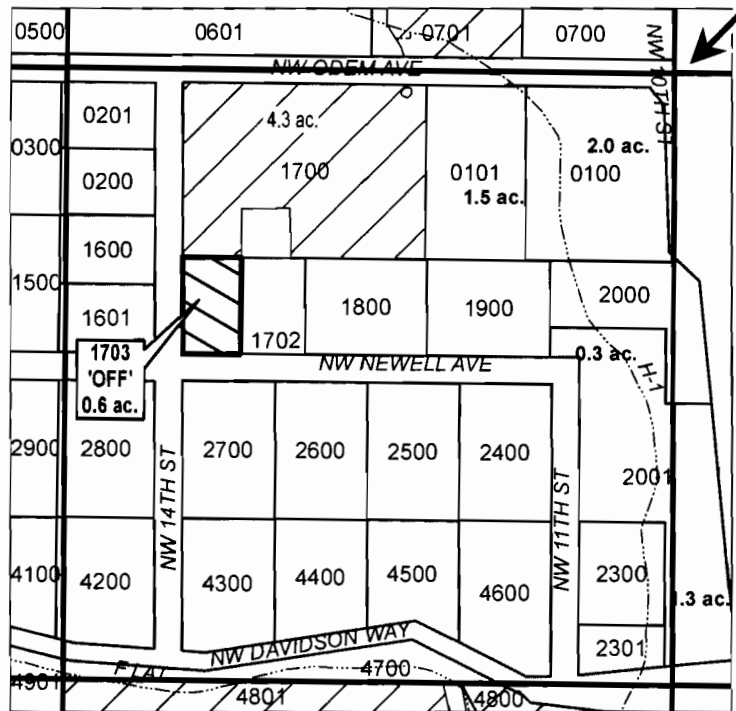
SALEM, OR



NE 1/4 OF THE SW 1/4

DISTRICT INTERNAL
NOTICE #: T-2012-013

C 1/4 COR



	EXISTING WATER RIGHTS
	OFF LANDS
	PARCELS W/ WATER RIGHTS

"OFF" MAP



APPLICATION FOR WATER RIGHTS TRANSFER

COID / PHILIP & PENELOPE KNIGHT

TAXLOT #: 1703

0.6 ACRES

DATE: 05-22-12

FILE: I:\TRANSFER\WR\TRANS12IT-2012-013\141321_NESW

DESCHUTES COUNTY SEC. 21 T14S R13E

RECEIVED BY OWRD

SCALE - 1" = 400'

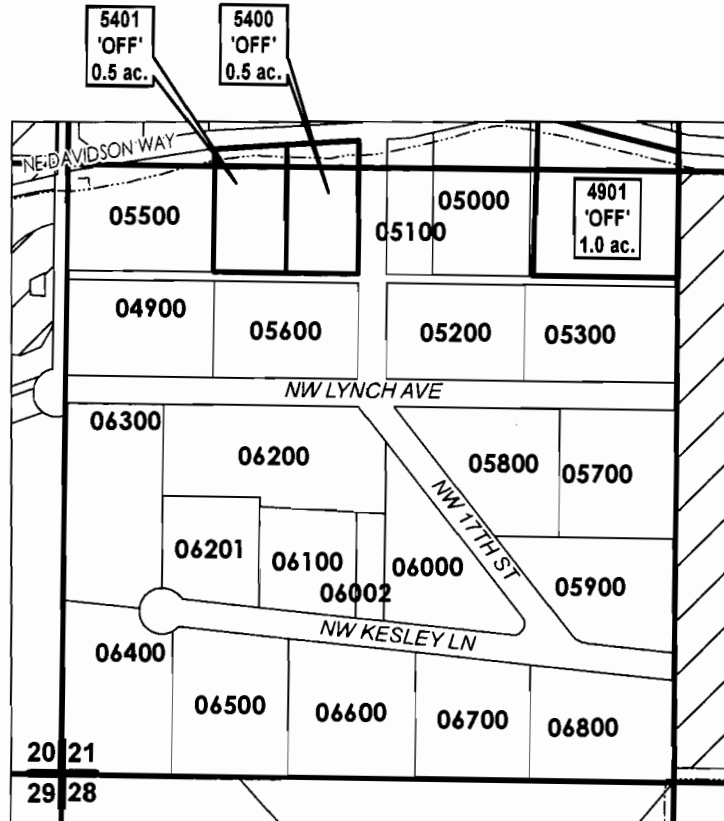
SEP 21 2012

SALEM, OR



SW 1/4 OF THE SW 1/4

DISTRICT INTERNAL
NOTICE #: T-2012-020



"OFF" MAP

# ac.	'OFF' LAND PARCELS
	EXISTING WATER RIGHTS



APPLICATION FOR WATER RIGHTS TRANSFER

MARTIN W. & LAURA E. OAKLAND /COID
JON & ELIZABETH BOWERMAN /COID

TAXLOT #: 4901, 5400, 5401

2.0 ACRES

Date: 8/31/2012

FILE: I:\TRANSFER\WRTRANS12\141321_SWSW

DESCHUTES COUNTY SEC.31 T14S R13E

RECEIVED BY OWRD

SCALE - 1" = 400'

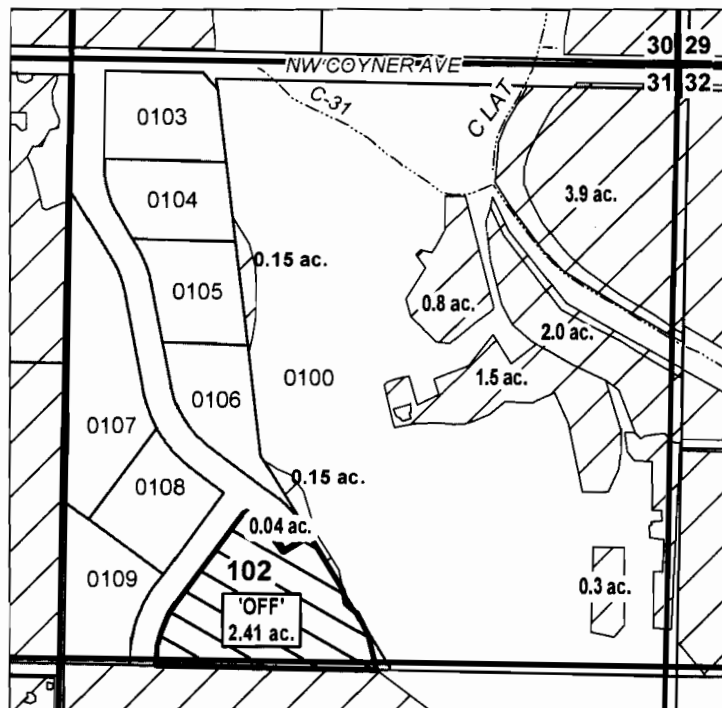
SEP 21 2012



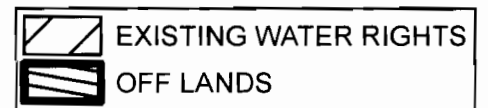
SALEM, OR

NE 1/4 OF THE NE 1/4

DISTRICT INTERNAL
NOTICE #: T-2012-013



"OFF" MAP



APPLICATION FOR WATER RIGHTS TRANSFER

COID / PHILIP & PENELOPE KNIGHT

TAXLOT #: 102

2.41 ACRES

DATE: 05-23-12

FILE: I:\TRANSFER\WRTRANS12\T-2012-013\141331_NENE

**DESCHUTES COUNTY
SEC.03 T15S R13E**

RECEIVED BY OWRD

SCALE - 1" = 400'

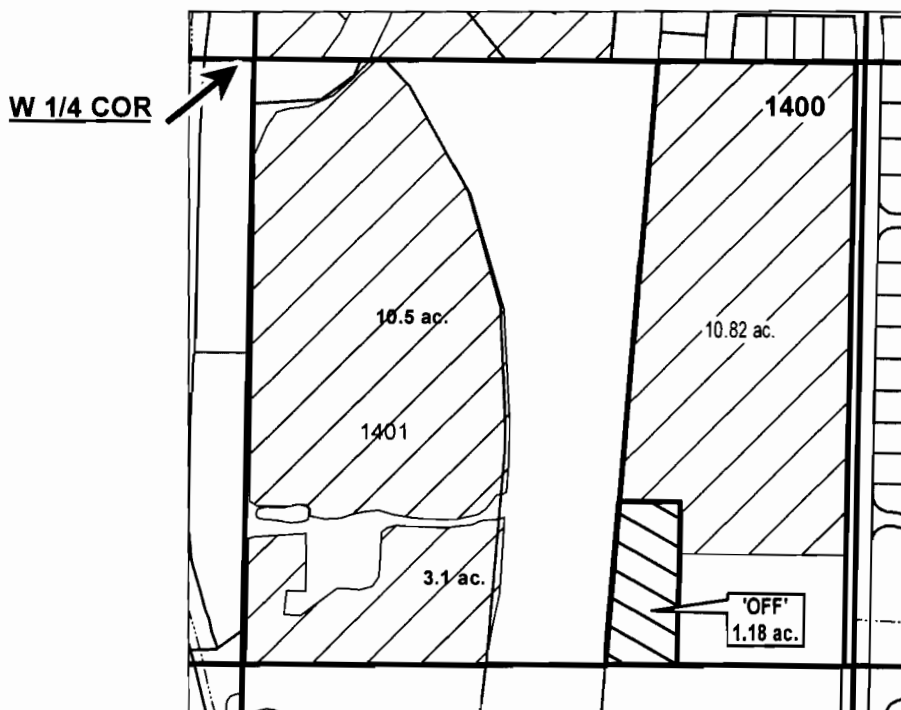
SEP 21 2012

SALEM, OR

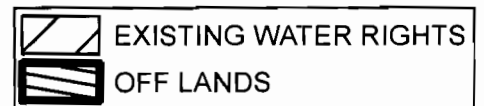


NW 1/4 OF THE SW 1/4

DISTRICT INTERNAL
NOTICE #: T-2012-013



"OFF" MAP



APPLICATION FOR WATER RIGHTS TRANSFER

COID / PHILIP & PENELOPE KNIGHT

TAXLOT #: 1400

1.18 ACRES

DATE: 05-22-12

FILE: I:\TRANSFER\WRTRANS12\T-2012-013\151303_NWSW

DESCHUTES COUNTY SEC.05 T15S R13E

RECEIVED BY OWRD

SCALE - 1" = 400'

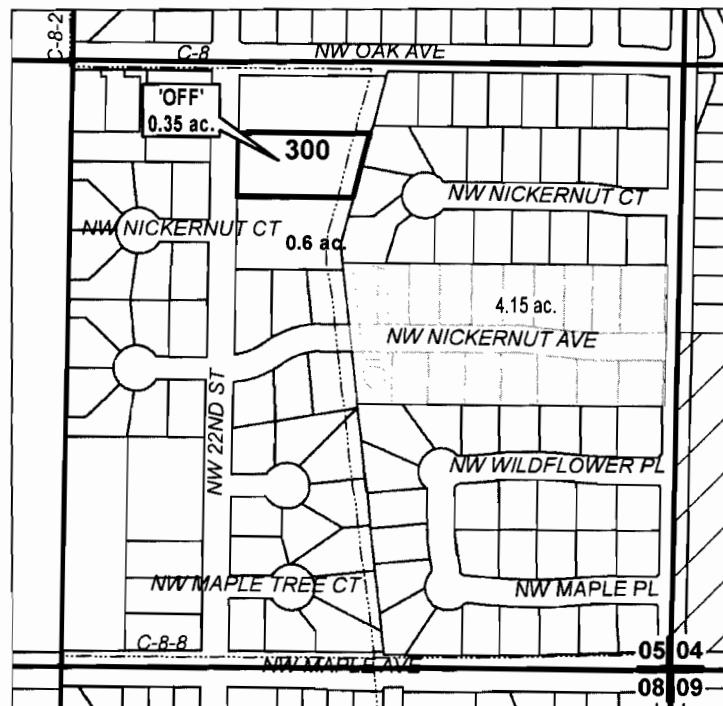
SEP 21 2012



SALEM, OR

SE 1/4 OF THE SE 1/4

DISTRICT INTERNAL
NOTICE #: T-2012-013



"OFF" MAP

# ac.	'OFF' LAND PARCELS
# ac.	PARCELS W/ WATER RIGHTS



APPLICATION FOR WATER RIGHTS TRANSFER

COID /PHILIP & PENELOPE KNIGHT

TAXLOT #: 300

0.35 ACRES

DATE: 05-23-12

FILE: I:\TRANSFER\WRTRANS12\T-2012-013\151305_SESE

DESCHUTES COUNTY SEC.25 T17S R12E

RECEIVED BY OWRD

SEP 21 2012

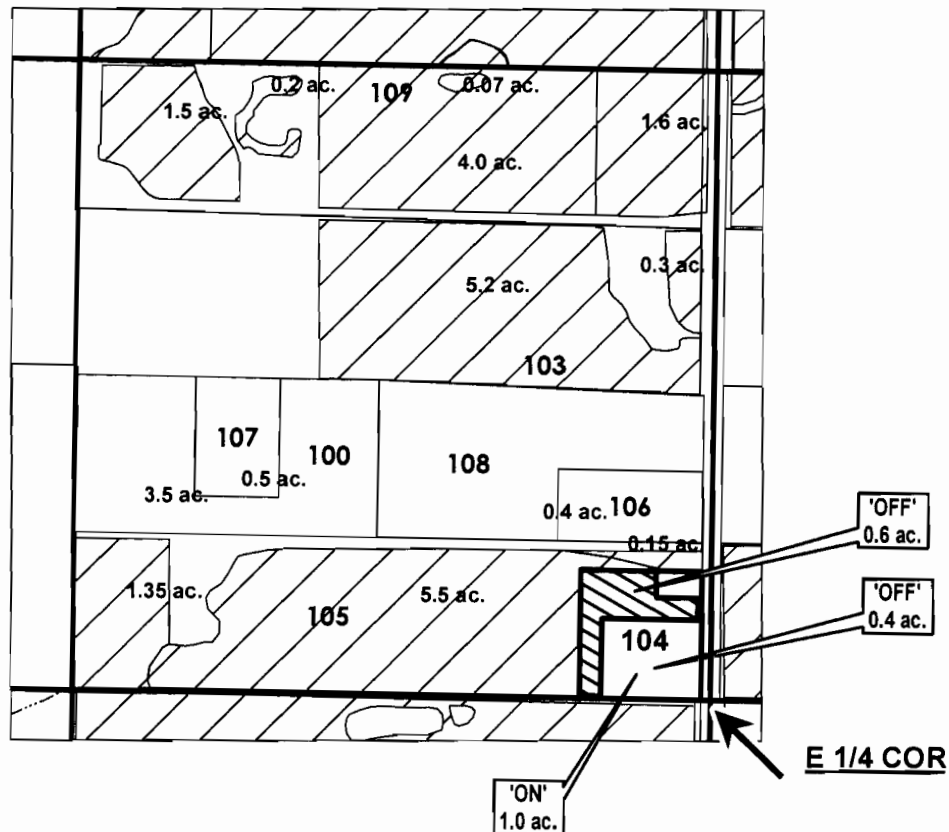
SALEM, OR


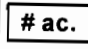



SCALE - 1" = 400'



SE 1/4 OF THE NE 1/4

DISTRICT INTERNAL
NOTICE #: T-2012-019



-  EXISTING WATER RIGHTS
-  PARCELS W/ WATER RIGHTS
-  'OFF' LAND PARCELS
-  'ON' LAND PARCELS
-  OFF LANDS

"OFF / ON" MAP

APPLICATION FOR WATER RIGHTS TRANSFER

JOHN M. & PATRICIA S. MADDOX /
JOHN M. & PATRICIA S. MADDOX

TAXLOT #: 104

1.0 ACRES

Date: 8/17/2012

FILE: I:\TRANSFER\WRTRANS12\171225_SENE



DESCHUTES COUNTY SEC.27 T17S R13E

RECEIVED BY OWRD

SCALE - 1" = 400'

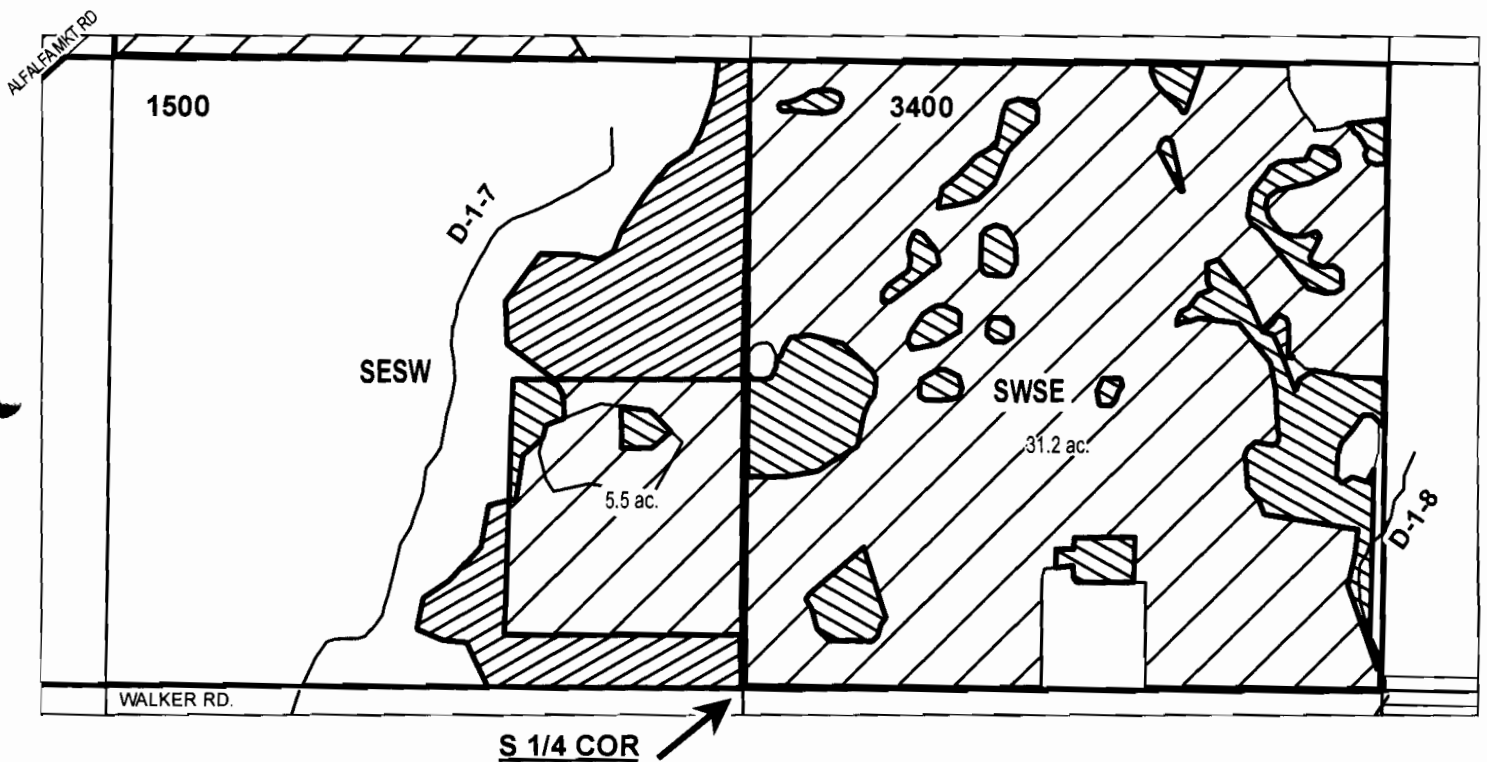
SEP 21 2012

SALEM, OR



SE 1/4 OF THE SW 1/4; SW 1/4 OF THE SE 1/4

DISTRICT INTERNAL
NOTICE #: T-2012-016



"OFF / ON" MAP

	EXISTING WATER RIGHTS
	OFF LANDS
	ON LANDS

QQ	TL	OFF AC.	ON AC.
SESW	1500	0.5	6.25
SWSE	3400	5.8	0.05
TOTAL		6.3	6.30



APPLICATION FOR WATER RIGHTS TRANSFER

WAYNE CURTIS KAESCH TRUST /
WAYNE CURTIS KAESCH TRUST

TAXLOT #: 1500, 3400

6.3 ACRES

Date: 8/17/2012

FILE: I:\TRANSFER\WRTRANS12\171327_SWSE