

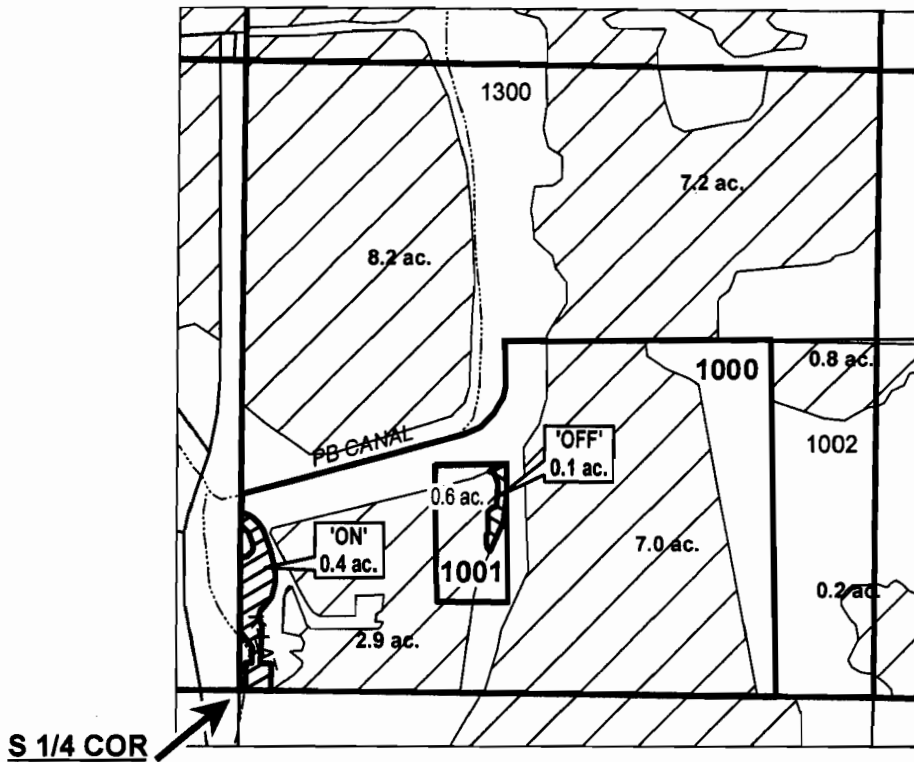
DESCHUTES COUNTY SEC.24 T14S R13E

SCALE - 1" = 400'



SW 1/4 OF THE SE 1/4

DISTRICT INTERNAL
NOTICE #: T-2012-018

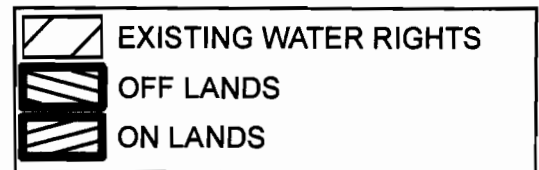


RECEIVED BY OWRD

DEC 21 2012

SALEM, OR

"OFF / ON" MAP



APPLICATION FOR WATER RIGHTS TRANSFER

NOEL W. NEAL & SALLY LEE BENJAMIN NEAL REVOCABLE LIVING TRUST /
NOEL W. NEAL & SALLY LEE BENJAMIN NEAL REVOCABLE LIVING TRUST

TAXLOT #: 1000, 1001

0.4 ACRES

DATE: 07-26-12

FILE: I:\TRANSFER\WRTRANS12\141324_SWSE

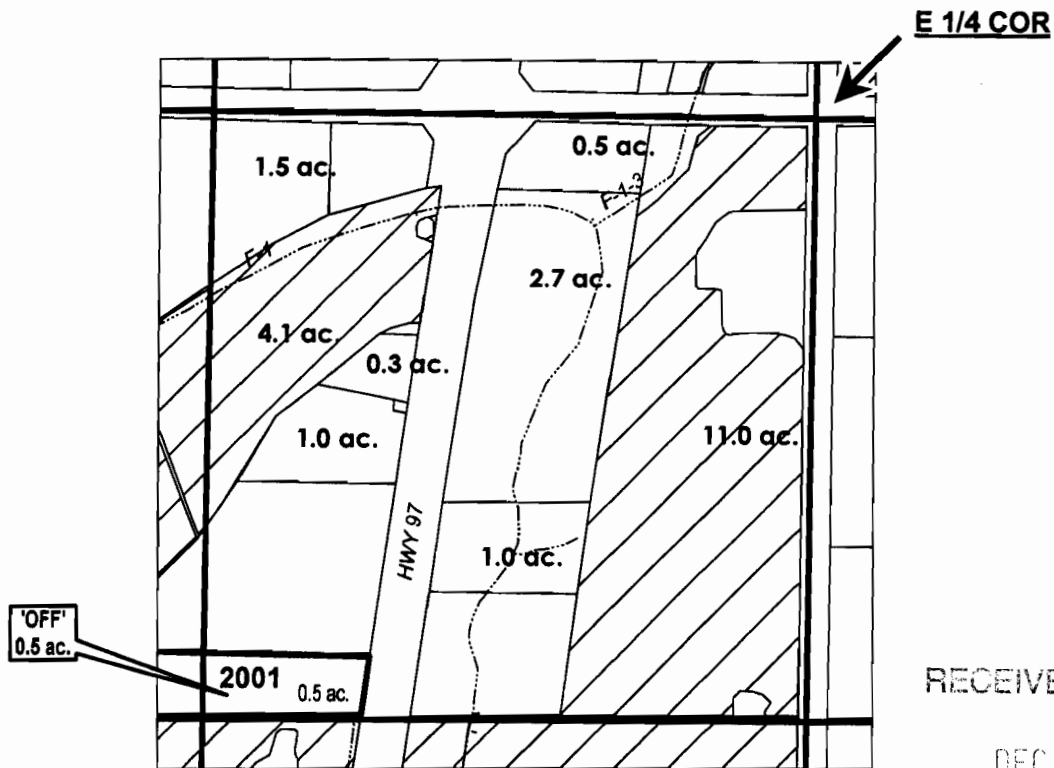
DESCHUTES COUNTY SEC.33 T14S R13E

SCALE - 1" = 400'



NE 1/4 OF THE SE 1/4

DISTRICT INTERNAL
NOTICE #: T-2012-017



RECEIVED BY OWRI

DEC 21 2012

SALEM, OR

"OFF" MAP

	EXISTING WATER RIGHTS
	PARCELS W/ WATER RIGHTS
	'OFF' LAND PARCELS



APPLICATION FOR WATER RIGHTS TRANSFER

COID QUITCLAIM / JERRY S. & RUTH E. KELLER

TAXLOT #: 2001

0.5 ACRES

Date: 9/27/2012

FILE: I:\TRANSFER\WRTRANS12\141333_NESE

DESCHUTES COUNTY SEC.36 T15S R12E

RECEIVED BY OWRD

SCALE - 1" = 400'

DEC 21 2012

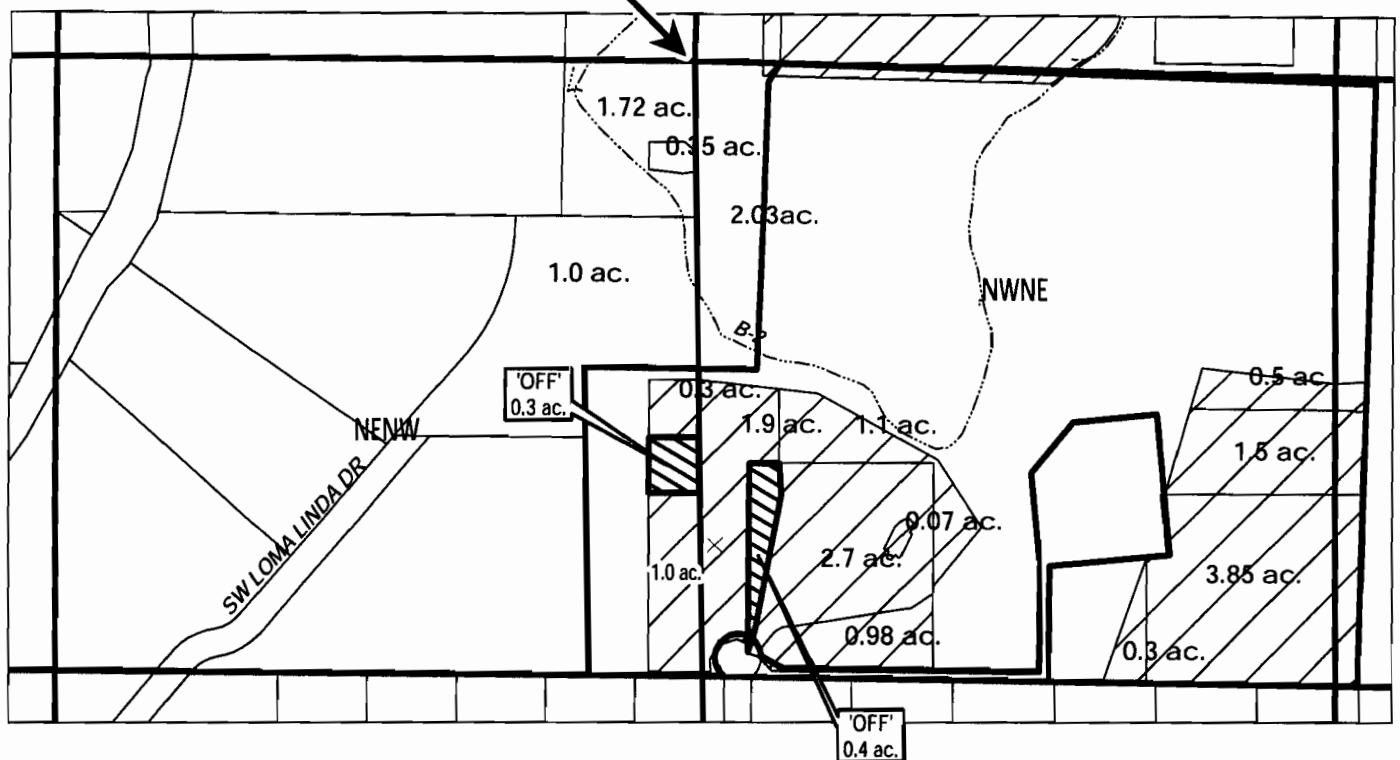


SALEM, OR

NE 1/4 OF THE NW 1/4; NW 1/4 OF THE NE 1/4

DISTRICT INTERNAL
NOTICE #: T-2012-017

N 1/4 COR



	EXISTING WATER RIGHTS
	OFF LANDS
	PARCELS W/ WATER RIGHTS
	POND

"OFF" MAP



APPLICATION FOR WATER RIGHTS TRANSFER

COID QUITCLAIM / JERRY S. & RUTH E. KELLER

TAXLOT #: 300

0.7 ACRES

Date: 9/27/2012

FILE: I:\TRANSFER\WRTRANS12151236_NENW_017

DESCHUTES COUNTY SEC.36 T15S R12E

SCALE - 1" = 400'



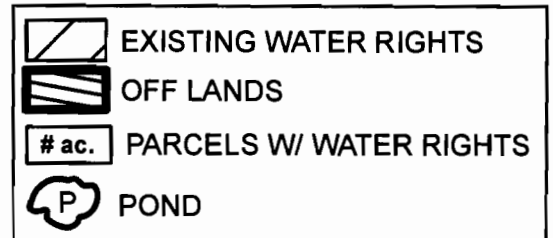
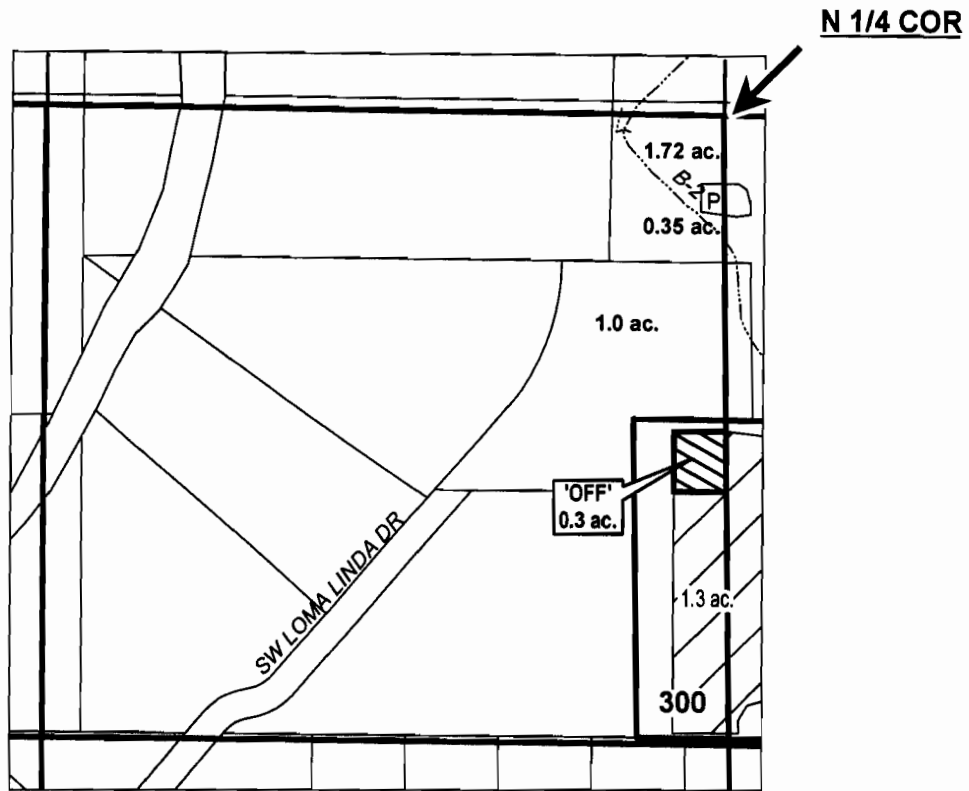
NE 1/4 OF THE NW 1/4

RECEIVED BY OWRD

DEC 21 2012

SALEM, OR

DISTRICT INTERNAL
NOTICE #: T-2012-018



"OFF" MAP

APPLICATION FOR WATER RIGHTS TRANSFER

COID QUITCLAIM /

NOEL W. NEAL & SALLY LEE BENJAMIN NEAL REVOCABLE LIVING TRUST

TAXLOT #: 300

0.3 ACRES

DATE: 07-26-12

FILE: I:\TRANSFER\WRTRANS121151236_NENW



DESCHUTES COUNTY SEC.06 T15S R13E

RECEIVED BY OWRD

SCALE - 1" = 400'

DEC 21 2012

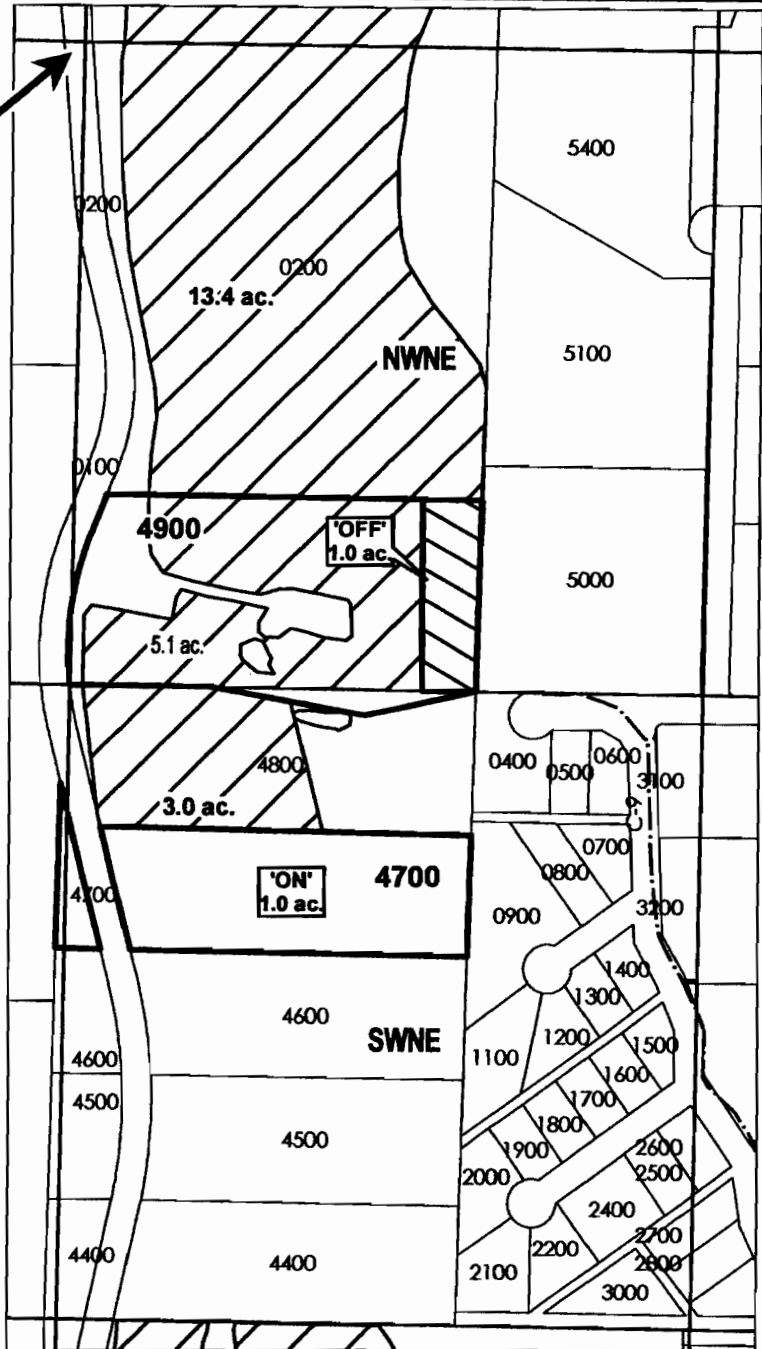


SALEM, OR




NW 1/4 OF THE NE 1/4; SW 1/4 OF THE NE 1/4

DISTRICT INTERNAL
NOTICE #: T-2012-014

N 1/4 COR



"OFF / ON" MAP

	EXISTING WATER RIGHTS
	OFF LANDS
	ON LANDS



APPLICATION FOR WATER RIGHTS TRANSFER

JAMES W. & JO ANN BREWER REVOCABLE LIVING TRUST /
RUSSELL JAMES BREWER AND JAMES WILLIAM BREWER

TAXLOT #: 4700, 4900

1.0 ACRES

DATE: 06-04-12

FILE: I:\TRANSFER\WRTRANS12\151306_WNE

CROOK COUNTY SEC.17 T16S R14E

SCALE - 1" = 400'

RECEIVED BY OWRD

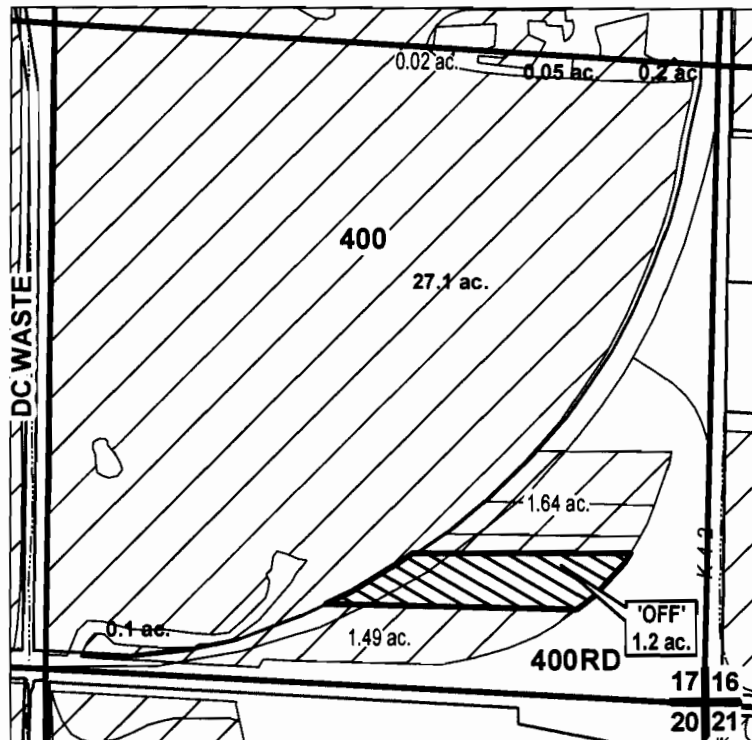


DEC 21 2012

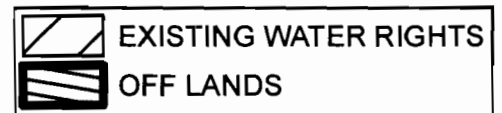
SE 1/4 OF THE SE 1/4

SALEM, OR

DISTRICT INTERNAL
NOTICE #: T-2012-008



"OFF" MAP



APPLICATION FOR WATER RIGHTS TRANSFER
COID / RODNEY D. WOLFER AND SALLY A. WOLFER et al

TAXLOT #: 400

1.2 ACRES

DATE: 05-31-12

FILE: I\TRANSFER\WRTRANS12\161417_SESE_08

CROOK COUNTY SEC.21 T16S R14E

SCALE - 1" = 400'

RECEIVED BY OWRD

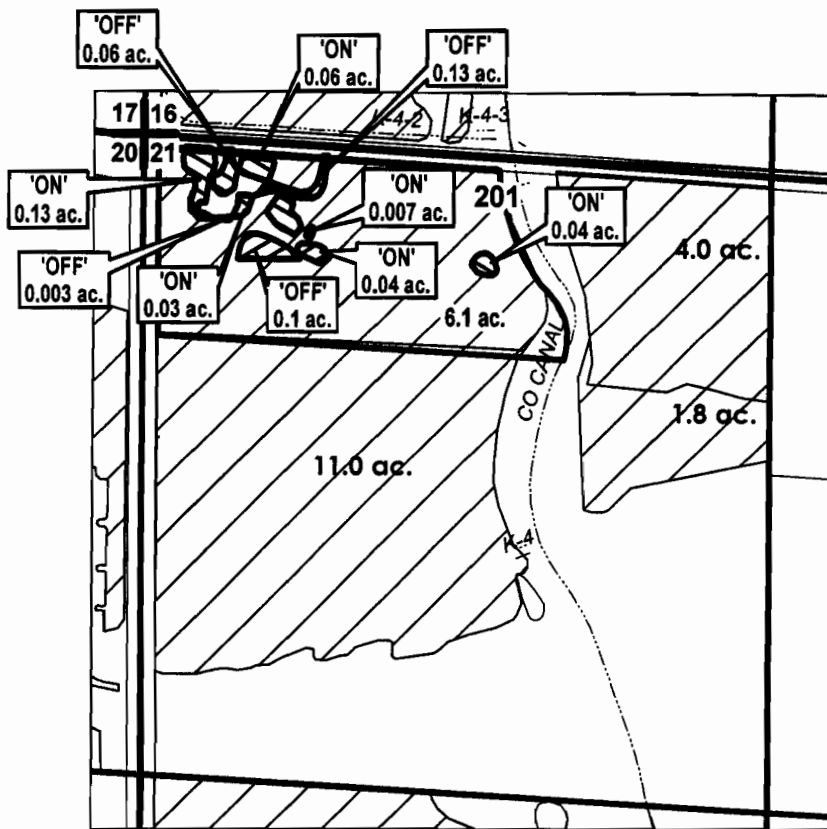
DEC 21 2012



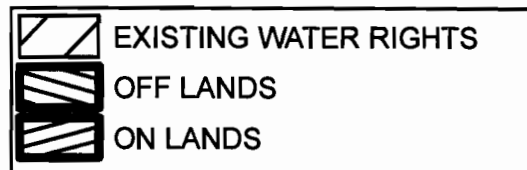
NW 1/4 OF THE NW 1/4

SALEM, OR

DISTRICT INTERNAL
NOTICE #: T-2012-026



"OFF / ON" MAP



APPLICATION FOR WATER RIGHTS TRANSFER

DAVID T. GRIGSBY / DAVID T. GRIGSBY

TAXLOT #: 201

0.3 ACRES

Date: 12/4/2012

FILE: I:\TRANSFER\WRTRANS121161421_NWNW



CROOK COUNTY SEC.28 T16S R14E

SCALE - 1" = 400'

RECEIVED BY OWRD

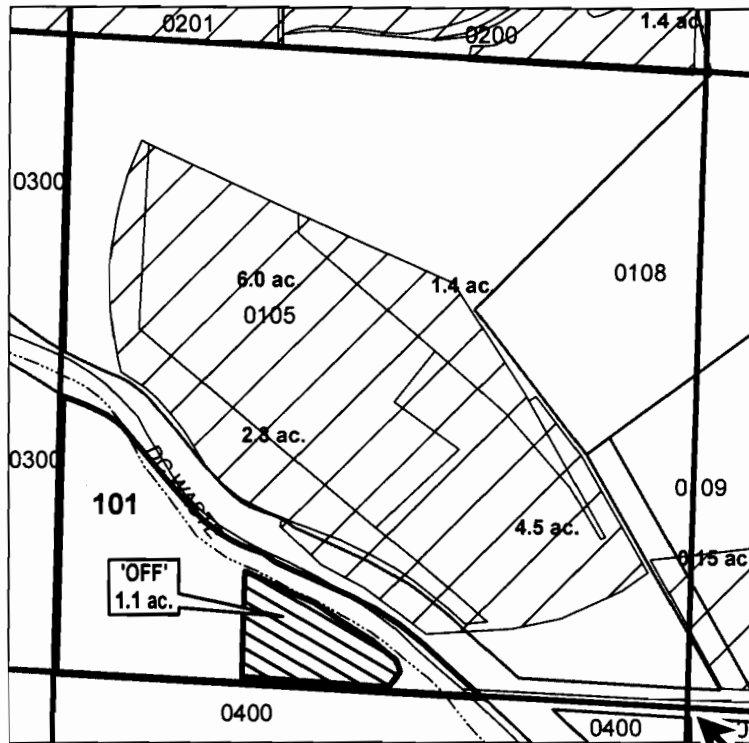


DEC 21 2012

SE 1/4 OF THE NW 1/4

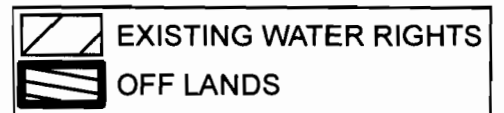
SALEM, OR

DISTRICT INTERNAL
NOTICE #: T-2012-008



W 1/4 COR

"OFF" MAP



APPLICATION FOR WATER RIGHTS TRANSFER
COID / RODNEY D. WOLFER AND SALLY A. WOLFER et al

TAXLOT #: 101

1.1 ACRES

DATE: 05-31-12

FILE: I:\TRANSFER\WRTRANS121161428_SENW

DESCHUTES COUNTY SEC.26 T17S R12E

SCALE - 1" = 400'

RECEIVED BY OWRD



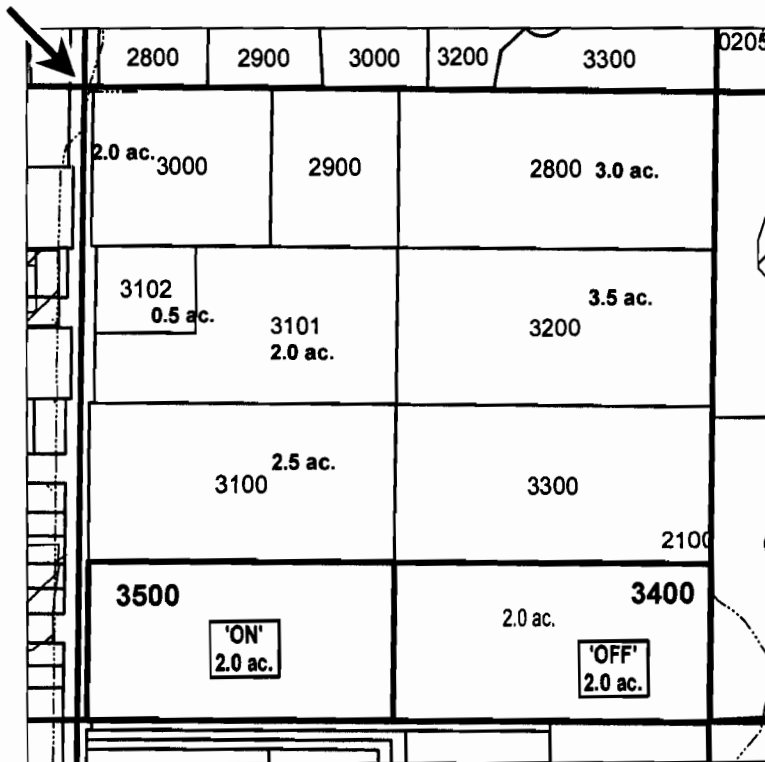
DEC 21 2012

NW 1/4 OF THE SE 1/4

SALEM, OR

DISTRICT INTERNAL
NOTICE #: T-2012-012

C 1/4 COR



# ac.	'OFF/ON' LAND PARCELS
# ac.	PARCELS W/ WATER RIGHTS

"OFF / ON" MAP

APPLICATION FOR WATER RIGHTS TRANSFER

COR INVESTMENTS, LLC / EAGLE ROAD II, LLC

TAXLOT #: 3400, 3500

2.0 ACRES

CENTRAL OREGON



IRRIGATION DISTRICT

DATE: 06-04-12

FILE: I:\TRANSFER\WR\TRANS12\171226_NWSE

DESCHUTES COUNTY SEC.02 T18S R13E

SCALE - 1" = 400'

RECEIVED BY OWRD

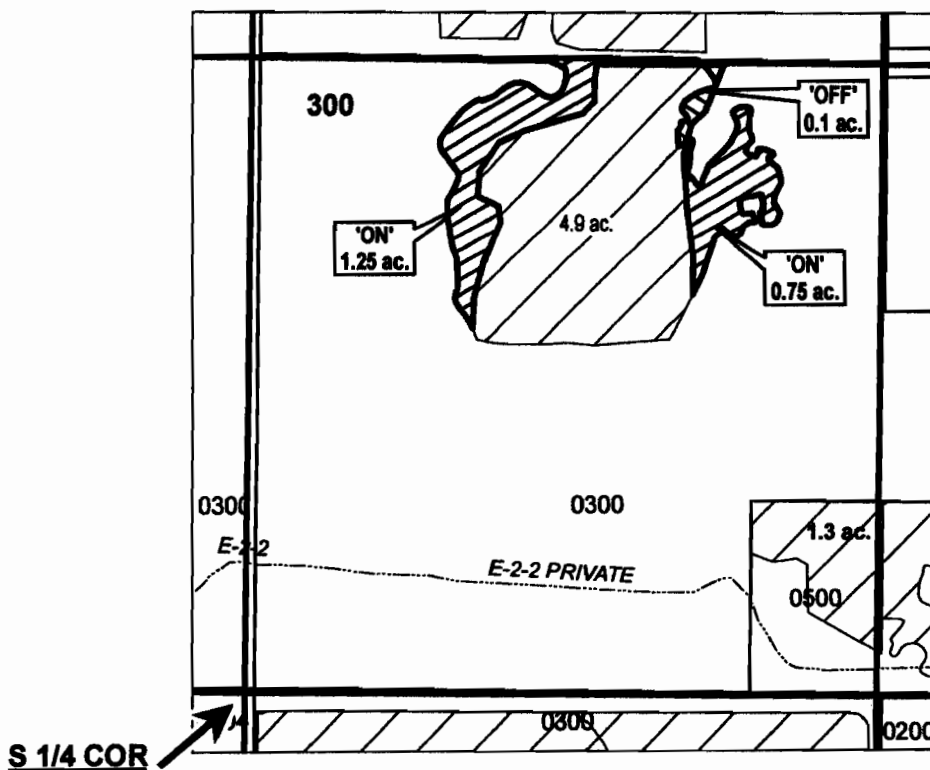


DEC 21 2012

SW 1/4 OF THE SE 1/4

SALEM, OR

DISTRICT INTERNAL
NOTICE #: T-2012-011



"OFF / ON" MAP

	EXISTING WATER RIGHTS
	OFF LANDS
	ON LANDS



APPLICATION FOR WATER RIGHTS TRANSFER
COID / DOUGLAS A & MARY A. SAWYER, CO-TRUSTEES
OF THE SAWYER FAMILY TRUST

TAXLOT #: 300

2.0 ACRES

DATE: 05-08-12

FILE: I:\TRANSFER\WR\TRANS12\181302_SWSE

DESCHUTES COUNTY SEC.12 T18S R13E

SCALE - 1" = 400'

RECEIVED BY OWRD



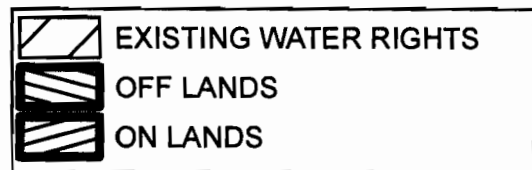
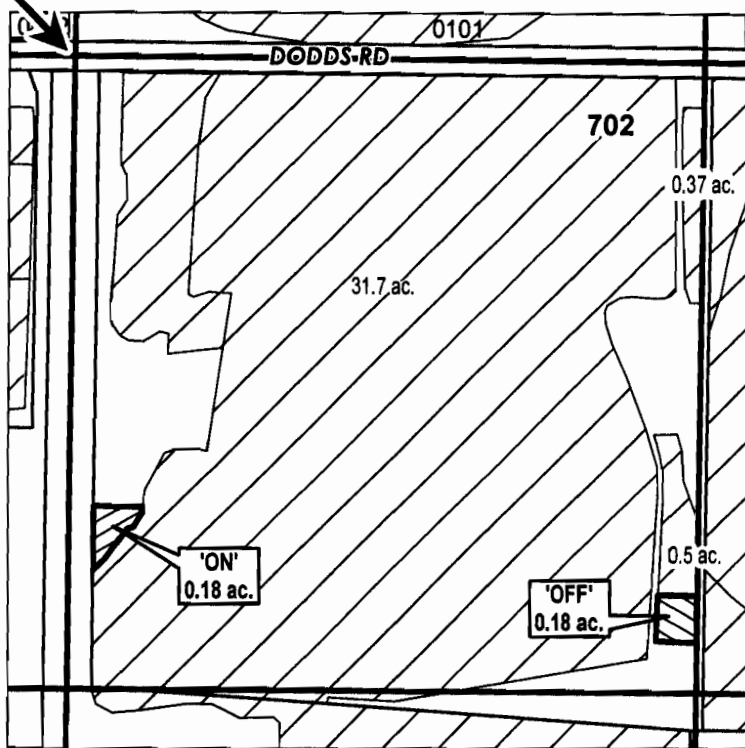
DEC 21 2012

NW 1/4 OF THE SE 1/4

SALEM, OR

DISTRICT INTERNAL
NOTICE #: T-2012-010

C 1/4 COR



"OFF / ON" MAP

APPLICATION FOR WATER RIGHTS TRANSFER

MARIE SANOWSKI, TRUSTEE FO TRUST B OF THE
WILLIAM AND MARIE SANOWSKI TRUST / SAME

TAXLOT #: 702

0.18 ACRES

DATE: 04-24-12

FILE: I\TRANSFER\WRTRANS121181312_NWSE



DESCHUTES COUNTY SEC.24 T14S R13E

SCALE - 1" = 400'

RECEIVED BY OWRD

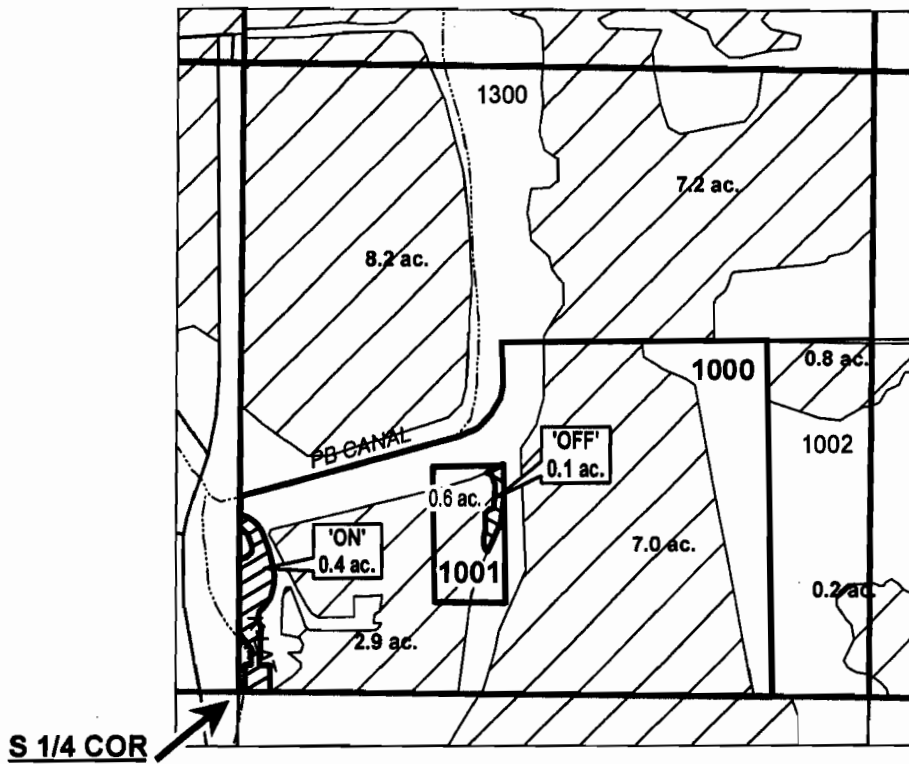


DEC 21 2012

SW 1/4 OF THE SE 1/4

SALEM, OR

DISTRICT INTERNAL
NOTICE #: T-2012-018



	EXISTING WATER RIGHTS
	OFF LANDS
	ON LANDS

"OFF / ON" MAP



APPLICATION FOR WATER RIGHTS TRANSFER

NOEL W. NEAL & SALLY LEE BENJAMIN NEAL REVOCABLE LIVING TRUST /
NOEL W. NEAL & SALLY LEE BENJAMIN NEAL REVOCABLE LIVING TRUST

TAXLOT #: 1000, 1001

0.4 ACRES

DATE: 07-26-12

FILE: I:\TRANSFER\WRTRANS12\141324_SWSE

DESCHUTES COUNTY SEC.12 T15S R12E

SCALE - 1" = 400'



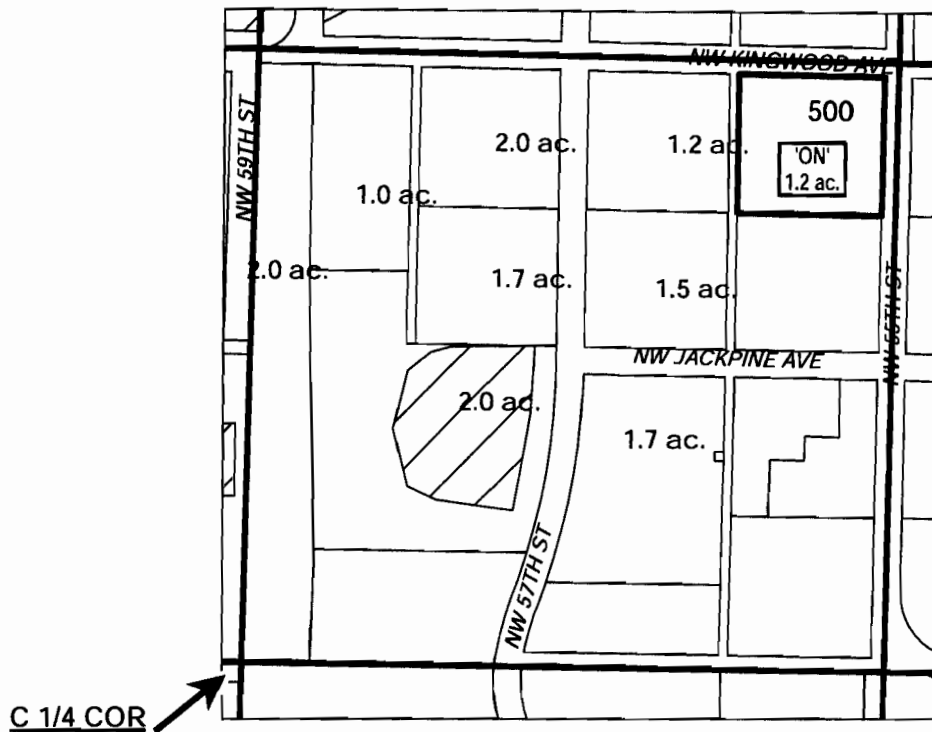
SW 1/4 OF THE NE 1/4

RECEIVED BY OWRD

DEC 21 2012

SALEM, OR

DISTRICT INTERNAL
NOTICE #: T-2012-017



C 1/4 COR

# ac.	'ON' LAND PARCELS
# ac.	PARCELS W/ WATER RIGHTS
	EXISTING WATER RIGHTS

"ON" MAP



APPLICATION FOR WATER RIGHTS TRANSFER

COID QUITCLAIM / JERRY S. & RUTH E. KELLER

TAXLOT #: 500

1.2 ACRES

Date: 9/27/2012

FILE: \\TRANSFER\WRTRANS12\151212_SWNE

DESCHUTES COUNTY SEC.06 T15S R13E

RECEIVED BY OWRD

SCALE - 1" = 400'

FEB 21 2012

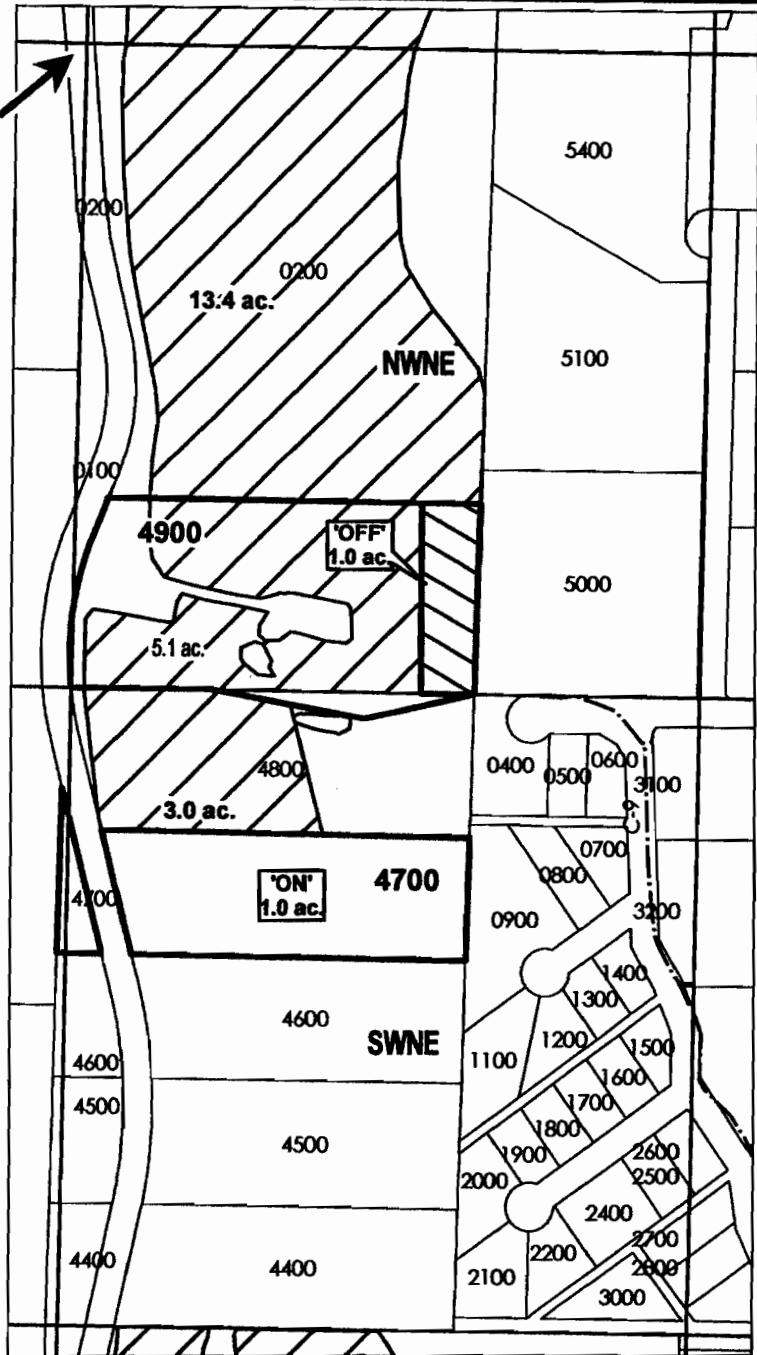


SALEM, OR

NW 1/4 OF THE NE 1/4; SW 1/4 OF THE NE 1/4

DISTRICT INTERNAL
NOTICE #: T-2012-014

N 1/4 COR



"OFF / ON" MAP

	EXISTING WATER RIGHTS
	OFF LANDS
	ON LANDS

CENTRAL OREGON



IRRIGATION DISTRICT

APPLICATION FOR WATER RIGHTS TRANSFER

JAMES W. & JO ANN BREWER REVOCABLE LIVING TRUST /
RUSSELL JAMES BREWER AND JAMES WILLIAM BREWER

TAXLOT #: 4700, 4900

1.0 ACRES

DATE: 06-04-12

CROOK COUNTY SEC.26 T15S R14E

SCALE - 1" = 400'

RECEIVED BY OWRD

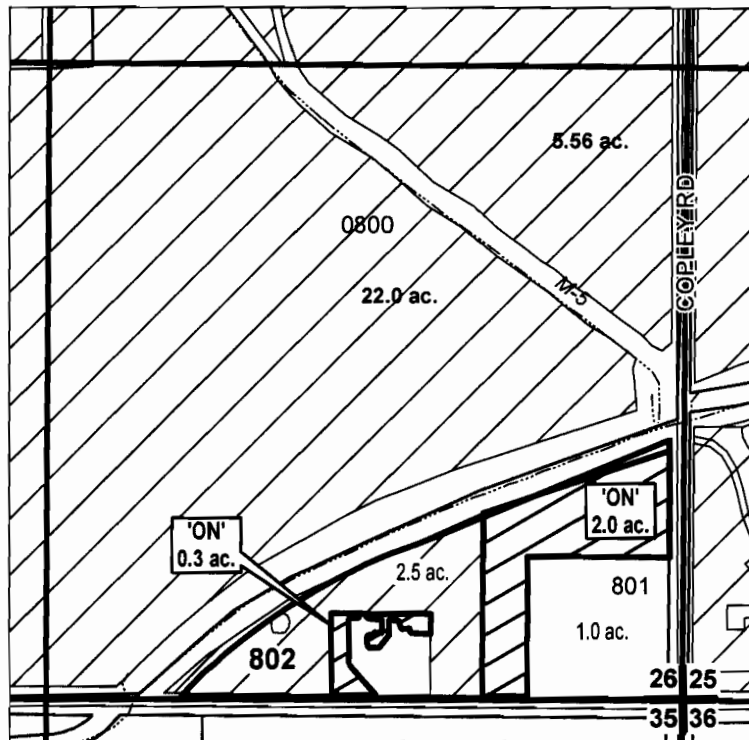


DEC 21 2012

SE 1/4 OF THE SE 1/4

SALEM, OR

DISTRICT INTERNAL
NOTICE #: T-2012-008



"ON" MAP

	EXISTING WATER RIGHTS
	ON LANDS
	PARCELS W/ WATER RIGHTS



APPLICATION FOR WATER RIGHTS TRANSFER
COID /RODNEY D. WOLFER AND SALLY A. WOLFER et al

TAXLOT #: 802

2.3 ACRES

DATE: 05-31-12

FILE: I:\TRANSFER\WRTRANS12\1151426_SESE

CROOK COUNTY SEC.21 T16S R14E

SCALE - 1" = 400'



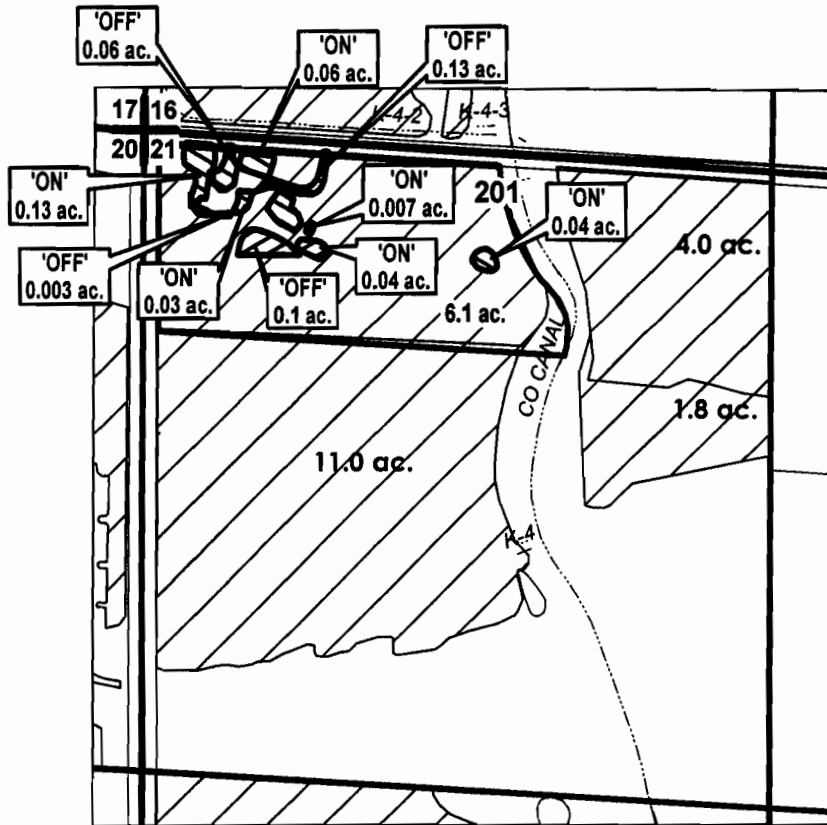
NW 1/4 OF THE NW 1/4

RECEIVED BY OWRD

DEC 21 2012

SALEM, OR

DISTRICT INTERNAL
NOTICE #: T-2012-026



	EXISTING WATER RIGHTS
	OFF LANDS
	ON LANDS

"OFF / ON" MAP

APPLICATION FOR WATER RIGHTS TRANSFER

DAVID T. GRIGSBY / DAVID T. GRIGSBY

TAXLOT #: 201

0.3 ACRES

Date: 12/4/2012

FILE: I:\TRANSFER\WRTRANS121161421_NWNW



DESCHUTES COUNTY SEC.26 T17S R12E

SCALE - 1" = 400'



NW 1/4 OF THE SE 1/4

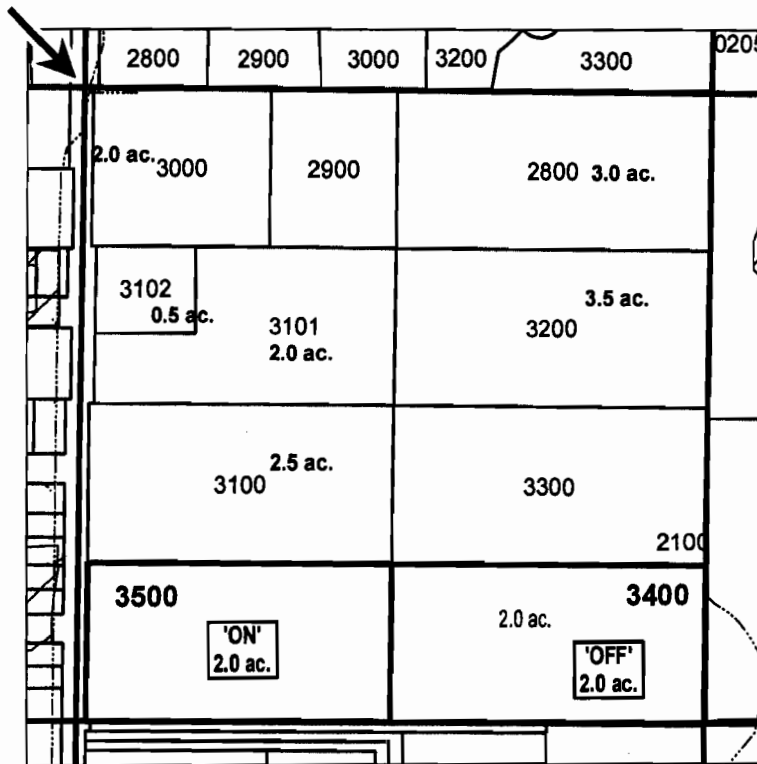
RECEIVED BY OWRD

DEC 21 2012

SALEM, OR

DISTRICT INTERNAL
NOTICE #: T-2012-012

C 1/4 COR



"OFF / ON" MAP

# ac.	'OFF/ON' LAND PARCELS
# ac.	PARCELS W/ WATER RIGHTS

CENTRAL OREGON



IRRIGATION DISTRICT

APPLICATION FOR WATER RIGHTS TRANSFER

COR INVESTMENTS, LLC / EAGLE ROAD II, LLC

TAXLOT #: 3400, 3500

2.0 ACRES

DATE: 08 04 12

FILE: I:\TRANSEED\WATTRANS\12171226 NWSE

DESCHUTES COUNTY SEC.02 T18S R13E

SCALE - 1" = 400'



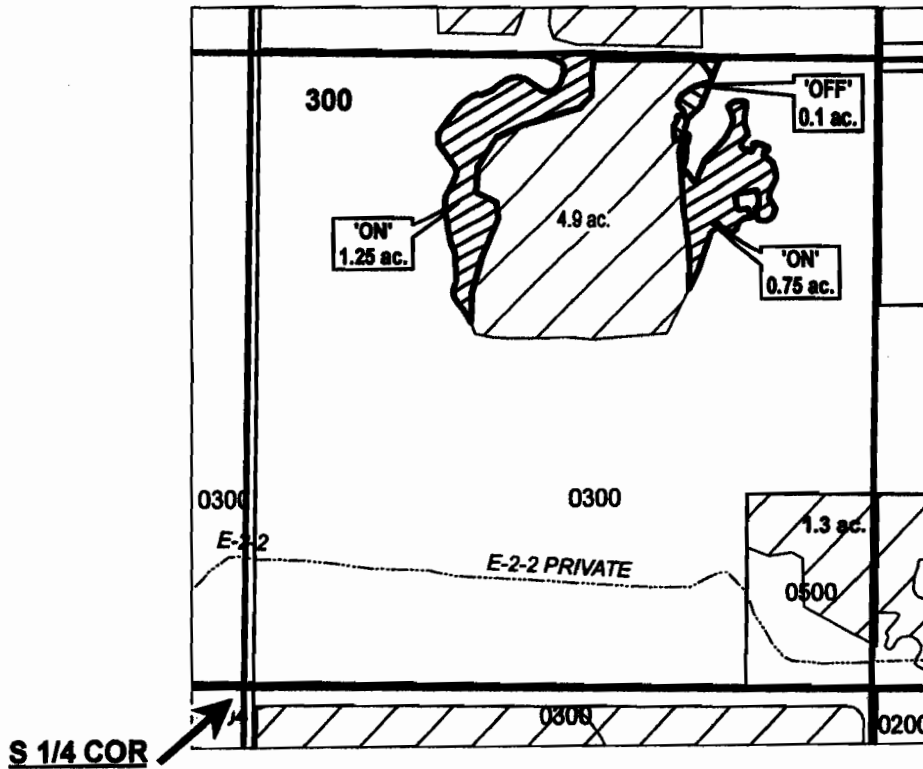
SW 1/4 OF THE SE 1/4

RECEIVED BY OWRD

DEC 21 2012

SALEM, OR

DISTRICT INTERNAL
NOTICE #: T-2012-011



	EXISTING WATER RIGHTS
	OFF LANDS
	ON LANDS

"OFF / ON" MAP

CENTRAL OREGON



IRRIGATION DISTRICT

APPLICATION FOR WATER RIGHTS TRANSFER
COID / DOUGLAS A & MARY A. SAWYER, CO-TRUSTEES
OF THE SAWYER FAMILY TRUST

TAXLOT #: 300

2.0 ACRES

DESCHUTES COUNTY SEC.12 T18S R13E

SCALE - 1" = 400'

RECEIVED BY OWRD



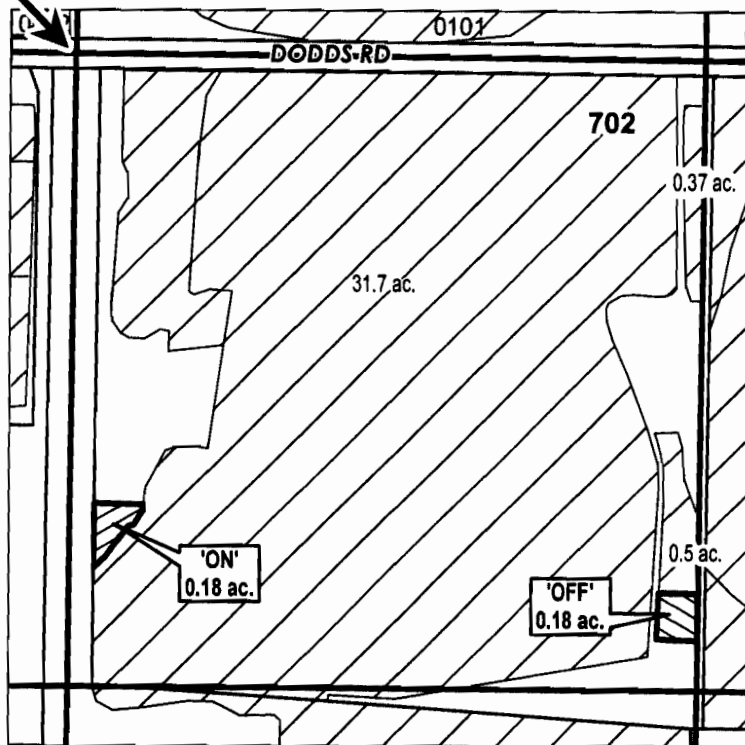
DEC 21 2012

NW 1/4 OF THE SE 1/4

SALEM, OR

DISTRICT INTERNAL
NOTICE #: T-2012-010

C 1/4 COR



	EXISTING WATER RIGHTS
	OFF LANDS
	ON LANDS

"OFF / ON" MAP

APPLICATION FOR WATER RIGHTS TRANSFER

MARIE SANOWSKI, TRUSTEE FO TRUST B OF THE
WILLIAM AND MARIE SANOWSKI TRUST / SAME

TAXLOT #: 702

0.18 ACRES



DATE: 04-24-12

FILE: I:\TRANSFER\WRTRANS12\181312_NWSE