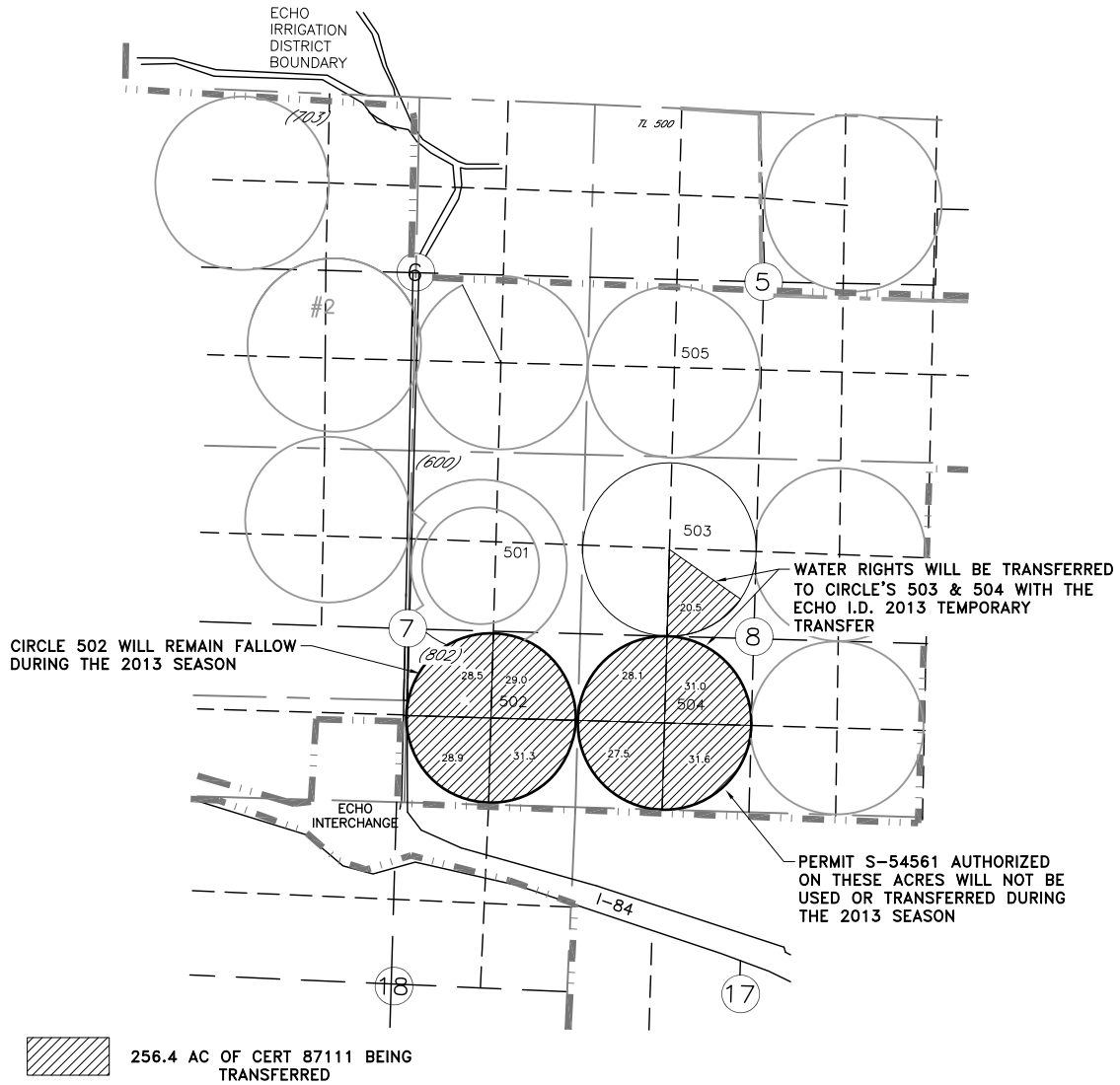


HALE FARMS, LLC
2013 TEMPORARY TRANSFER
MAP 1 OF 3
T3N, R30E WM UMATILLA COUNTY
FROM CERT 87111
ECHO FARM

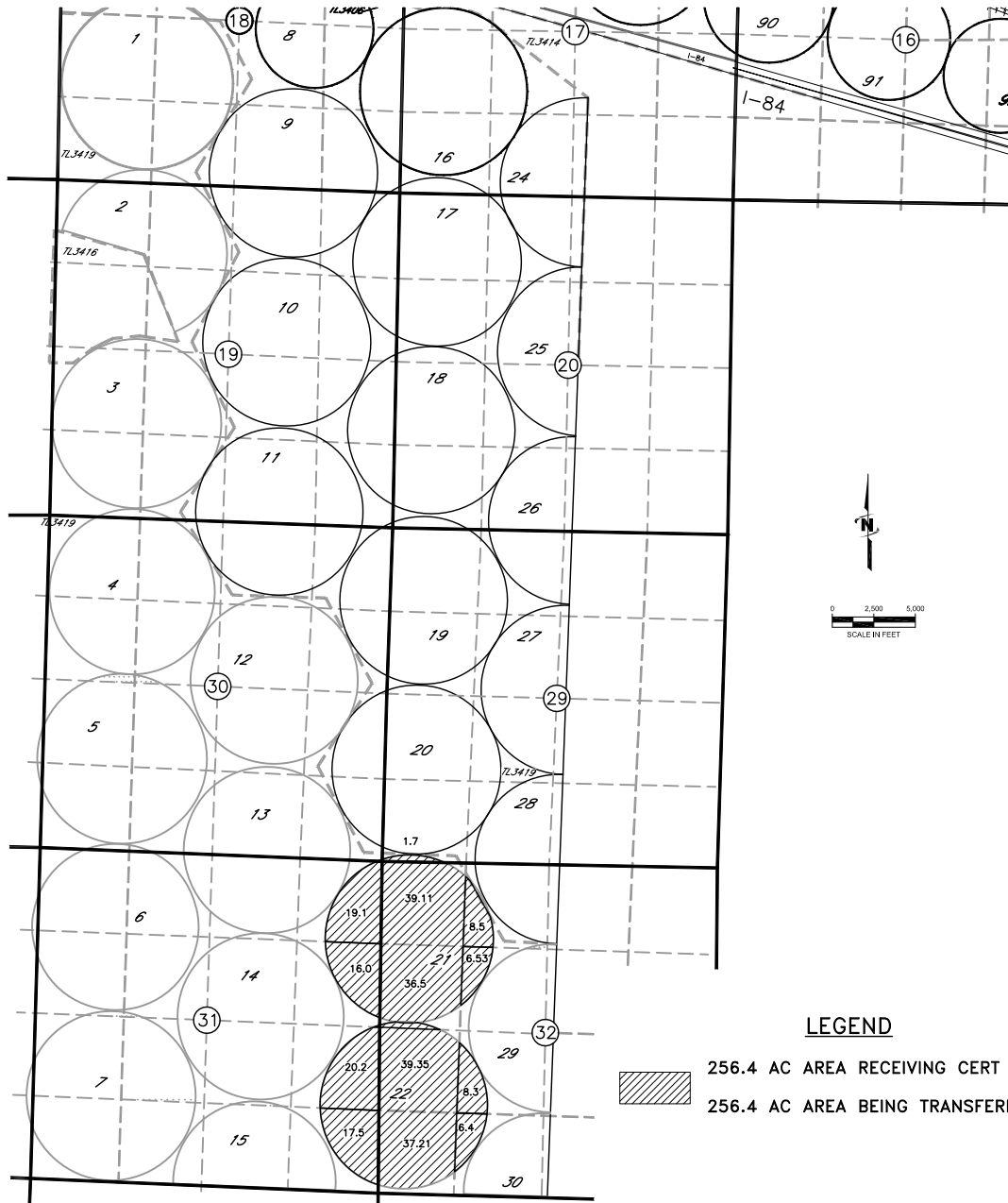


NOTE:
 THE PURPOSE OF THIS MAP IS TO IDENTIFY THE APPROXIMATE LOCATION OF THE WATER RIGHT. IT IS NOT INTENDED TO PROVIDE INFORMATION RELATIVE TO THE LOCATION OF PROPERTY OWNERSHIP BOUNDARY LINES, PIPE LOCATIONS AND SIZES WHERE SHOWN WERE PROVIDED BY FARM OPERATIONAL PERSONNEL AND ARE APPROXIMATE LOCATIONS AND SIZES.

DRAWING: F:\Project\30-08-016 - Porfily Water Rights Consulting\00 Misc Engineering\Cad\hale\HALE FARMS 2013\30-08-016 FROM 2013.DWG
 PRINTED BY: rwillard on 03/19/13 12:07 PM



HALE FARMS, LLC
2013 TEMPORARY TRANSFER
MAP 2 OF 3
T4N, R26E WM MORROW COUNTY
TO CERT 87111
FROM CERT 79482
PATERSON FARM



LEGEND

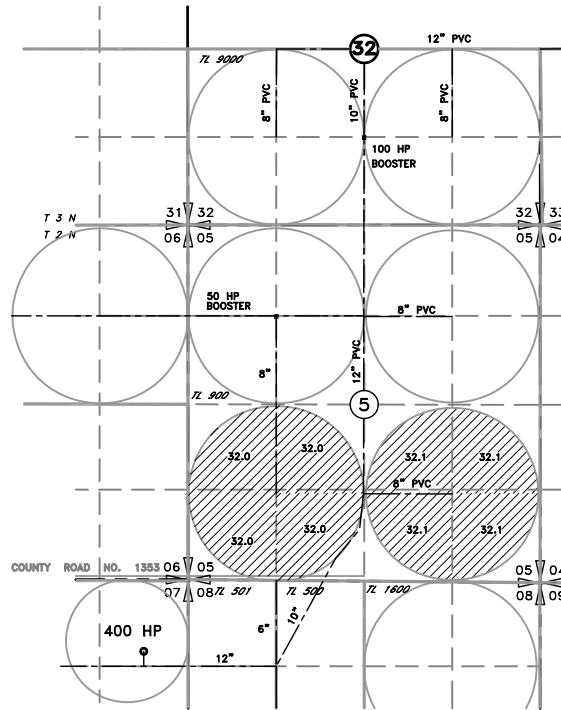
- 256.4 AC AREA RECEIVING CERT 87111
- 256.4 AC AREA BEING TRANSFERRED FROM CERT 79482

NOTE:
 THE PURPOSE OF THIS MAP IS TO IDENTIFY THE APPROXIMATE LOCATION OF THE WATER RIGHT. IT IS NOT INTENDED TO PROVIDE INFORMATION RELATIVE TO THE LOCATION OF PROPERTY OWNERSHIP BOUNDARY LINES. PIPE LOCATIONS AND SIZES WHERE SHOWN WERE PROVIDED BY FARM OPERATIONAL PERSONNEL AND ARE APPROXIMATE LOCATIONS AND SIZES.

DRAWING: F:\Project\30-08-016 - Porfily Water Rights Consulting\00 Misc Engineering\Cad\hale\HALE FARMS 2013\30-08-016 TO 2013.dwg
 PRINTED BY: rwillard on 03/19/13 12:08 PM

HALE FARMS, LLC
 2013 TEMPORARY TRANSFER
 MAP 3 OF 3
 T4N, R26E WM MORROW COUNTY

T2N & T3N, R28E
 UMATILLA COUNTY
 BUTTER CREEK FARM



LEGEND



256.4 AC AREA RECEIVING CERT 79482



NOTE:
 THE PURPOSE OF THIS MAP IS TO IDENTIFY THE APPROXIMATE LOCATION OF THE WATER RIGHT. IT IS NOT INTENDED TO PROVIDE INFORMATION RELATIVE TO THE LOCATION OF PROPERTY OWNERSHIP BOUNDARY LINES, PIPE LOCATIONS AND SIZES WHERE SHOWN WERE PROVIDED BY FARM OPERATIONAL PERSONNEL AND ARE APPROXIMATE LOCATIONS AND SIZES.

DRAWING: F:\Project\30-08-016 - Porfily Water Rights Consulting\00 Misc Engineering\Cad\hale\HALE FARMS 2013\30-08-016 TO 79482 2013.dwg
 PRINTED BY: rwillard on 03/19/13 12:09 PM