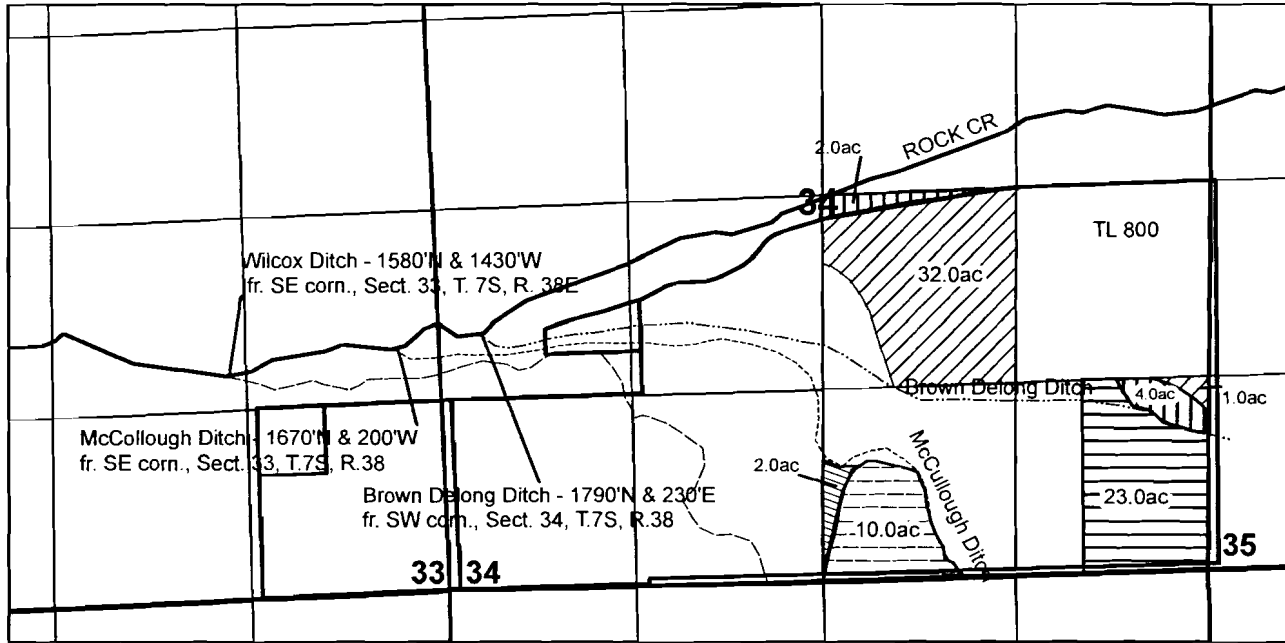


Map to Accompany Temporary Transfer for Tom & Fawn Kerns



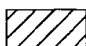
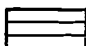
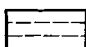


Scale: 1" = 1320'

T. 7S, R.38E,WM



"FROM" Lands

-  C-87961 - 1904 RR Auth. POD Wilcox
-  C-45595 - 1868 RR Auth. POD Brown Delong
-  C-45595 1868 Auth. POD Brown Delong
-  C-87961 1882 Auth. POD McCullough
-  C-87961 1904 Auth. POD Wilcox


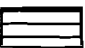
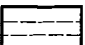
T. 7S, R.38E,WM

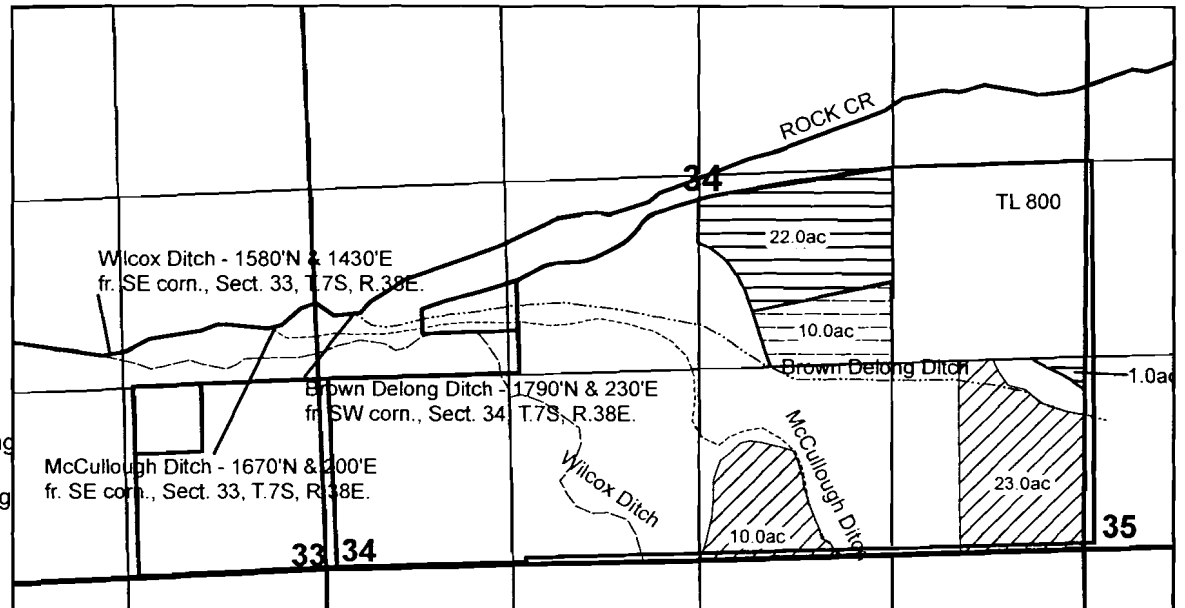
RECEIVED BY OWRD

MAY 13 2013

SALEM, OR

"TO" Lands

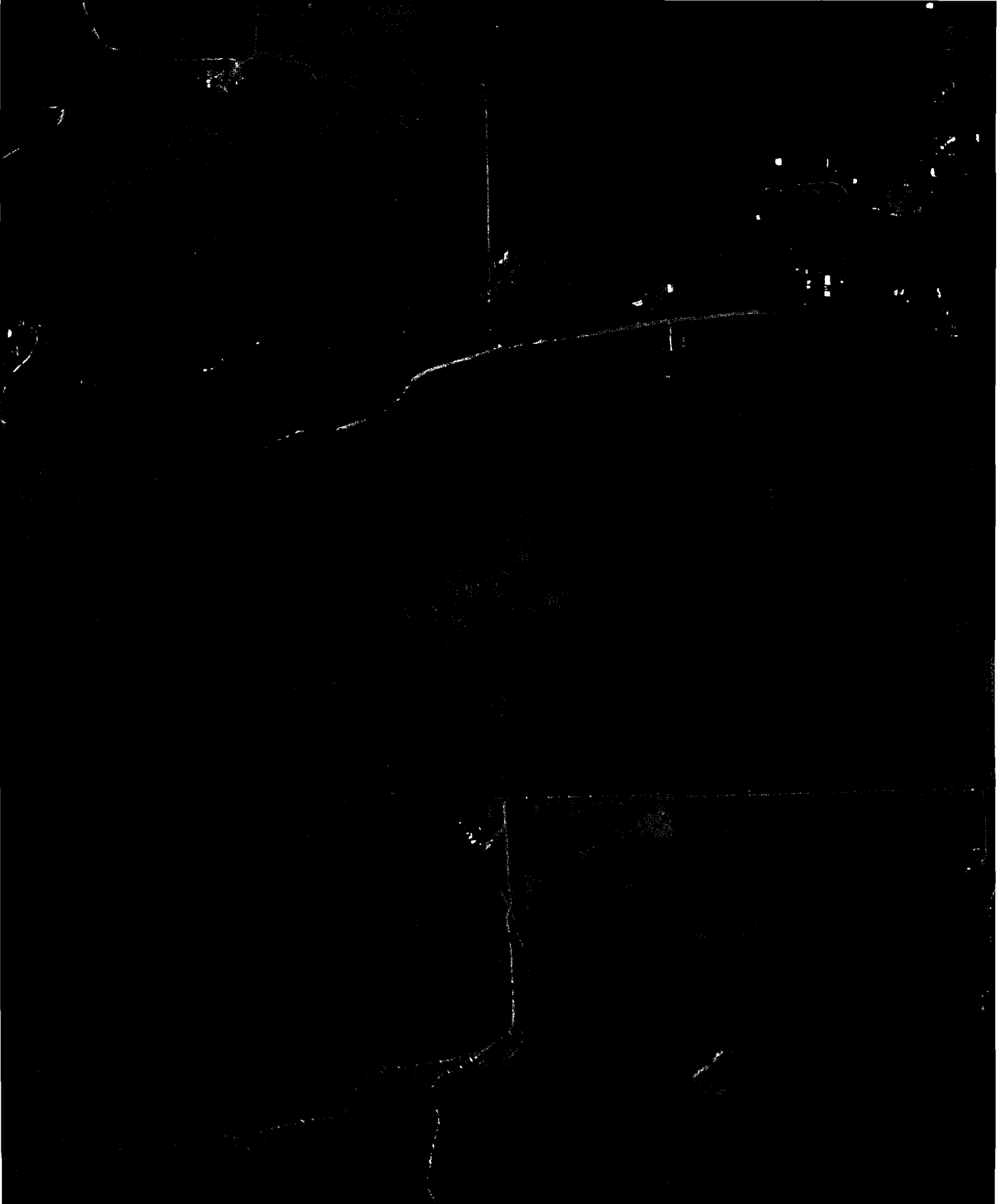
-  C-45595 1868 Proposed POD McCullough
-  C-87961 1882 Proposed POD Brown Delong
-  C-87961 1904 Proposed POD Brown Delong



1011597

2011 Aerial Photo

T011597



2009 Aerial Photo

T011597

