

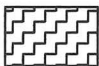
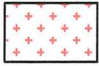
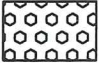



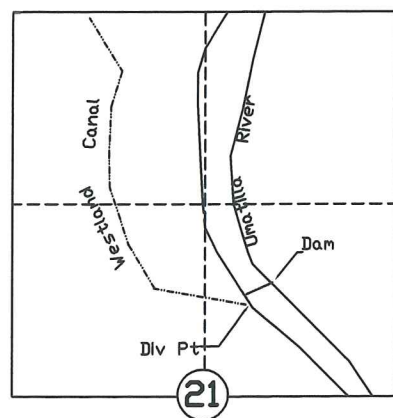


WESTLAND IRRIGATION DISTRICT 2013 TEMPORARY TRANSFER PRIOR-PRIOR 3N 28E & 3N 29E

-  FROM: 98.8 acres primary certificate 76715 & supplemental certificate 79439.
-  TO: 92.5 acres primary certificate 76715 & supplemental certificate 79439. Existing certificates 76050 and 81784 on to ground (see T-9844) diminished to supplemental to incoming certificate 76715 for 2013 season.
-  TO: 5.8 acres primary certificate 76715 & supplemental certificate 79439. Existing certificate 81784 on to ground diminished to supplemental to incoming certificate 76715 for 2013 season.
-  TO: 0.5 acre (NE SE section 15, 3N, 28E) primary certificate 76715 & supplemental certificate 79439.
-  FROM: 1.0 acre primary & supplemental certificate 76799.
-  TO: 1.0 acre primary & supplemental certificate 76799. Existing certificate 81784 on to ground diminished to supplemental to incoming certificate 76799 for 2013 season.
-  Certificates 76715 & 79439 in sections 14 & 15 not involved with this transfer.
-  Certificate 76799 in NE 1/4 SE 1/4 of section 15 not involved with this transfer.

T3N., R 29E., W.M.

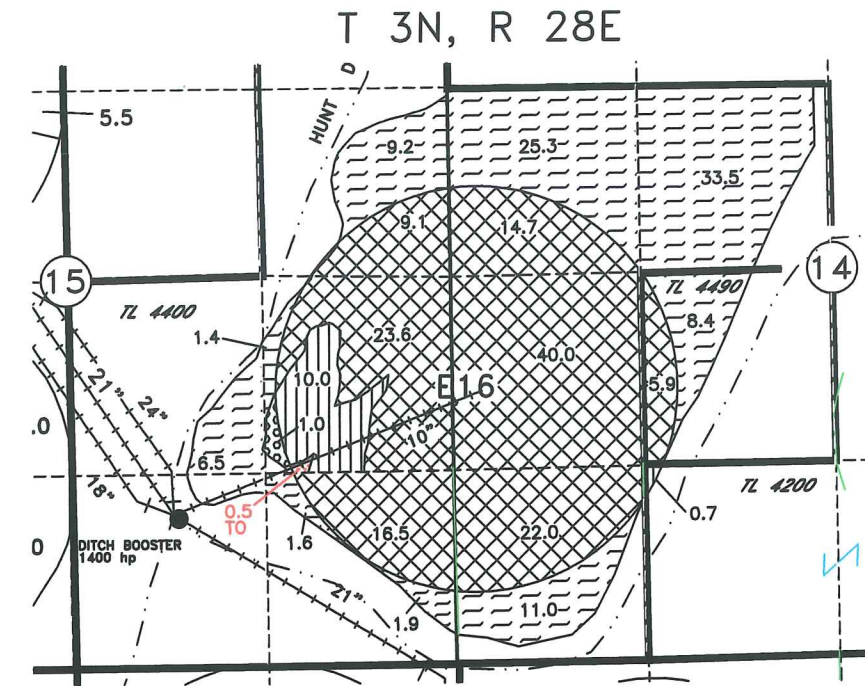
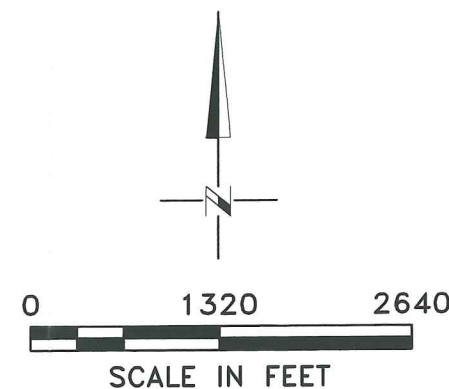


THIS TRANSFER IS IDENTICAL TO 2013
TEMPORARY TRANSFER #T-11446

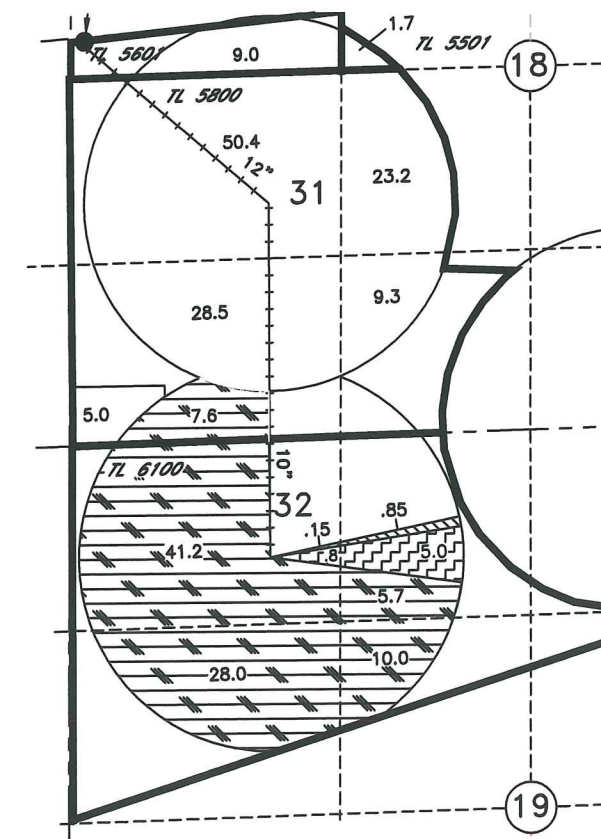
RECEIVED BY OWRD

MAY 06 2013

SALEM, OR



T 3N, R 29E



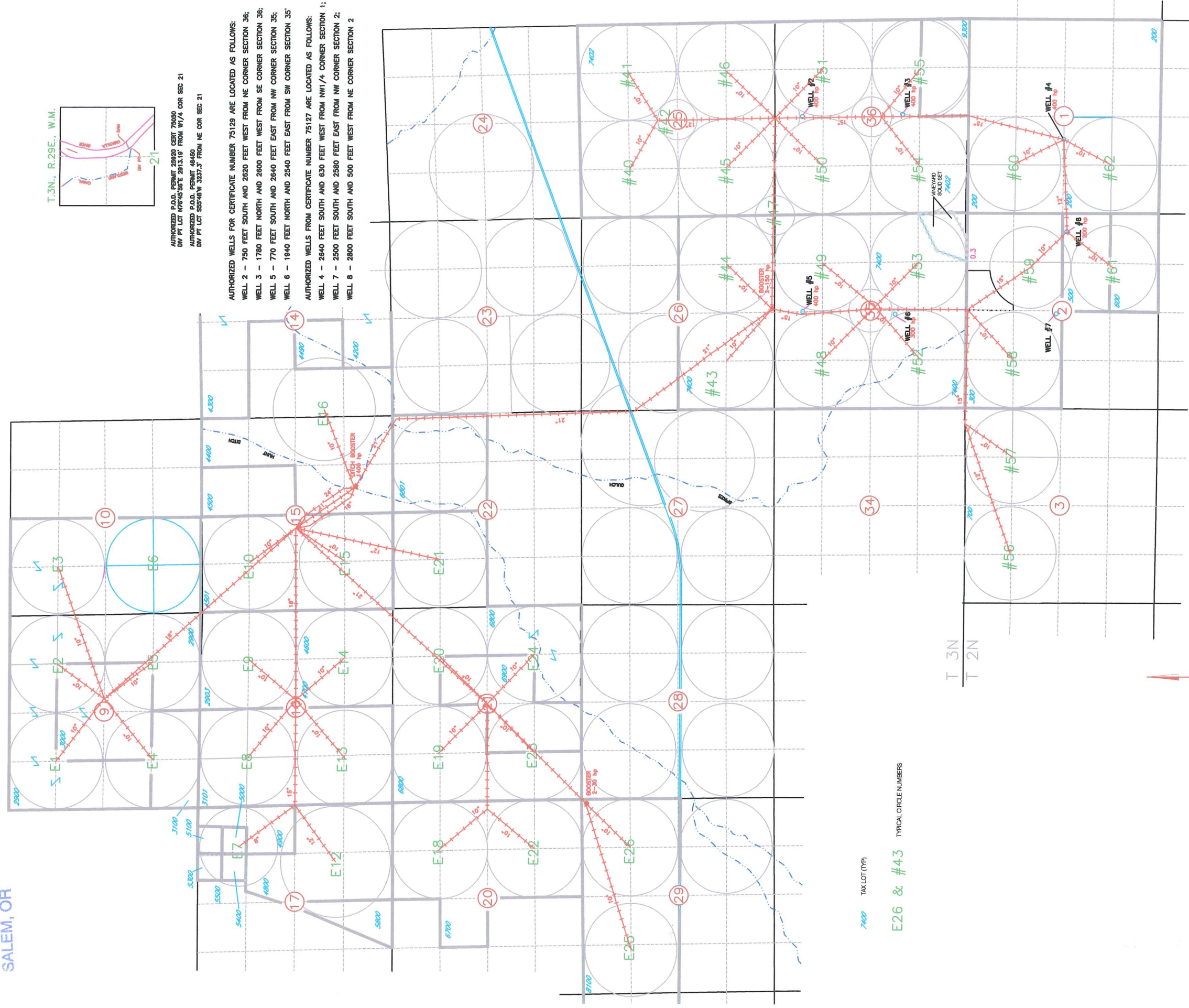
RECEIVED BY OWRD

MAY 06 2013

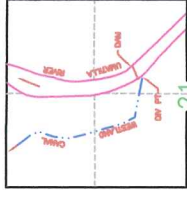
SALEM, OR

CHESTER PRIOR DBA EAGLE RANCH DISTRIBUTION SYSTEM

T 2N & T 3N RANGE 28 E.W.M.



T.3N., R.29E., W.M.



AUTHORIZED P.O.D. PERMIT 26220 CSST 75090
 ON PT LOT NW/4S/8E 2813.10' FROM NW/4 COR SEC 21

AUTHORIZED P.O.D. PERMIT 64160
 ON PT LOT S/8S/8W 3237.5' FROM NE COR SEC 21

AUTHORIZED WELLS FOR CERTIFICATE NUMBER 75129 ARE LOCATED AS FOLLOWS:
 WELL 2 - 750 FEET SOUTH AND 2620 FEET WEST FROM NE CORNER SECTION 36;
 WELL 3 - 1780 FEET NORTH AND 2600 FEET WEST FROM SE CORNER SECTION 36;
 WELL 5 - 770 FEET SOUTH AND 2640 FEET EAST FROM NW CORNER SECTION 35;
 WELL 6 - 1940 FEET NORTH AND 2540 FEET EAST FROM SW CORNER SECTION 35

AUTHORIZED WELLS FROM CERTIFICATE NUMBER 75127 ARE LOCATED AS FOLLOWS:
 WELL 4 - 2640 FEET SOUTH AND 630 FEET WEST FROM NW 1/4 CORNER SECTION 1;
 WELL 7 - 2500 FEET SOUTH AND 2580 FEET EAST FROM NW CORNER SECTION 2;
 WELL 8 - 2800 FEET SOUTH AND 500 FEET WEST FROM NE CORNER SECTION 2

7400 TAX LOT (TP)

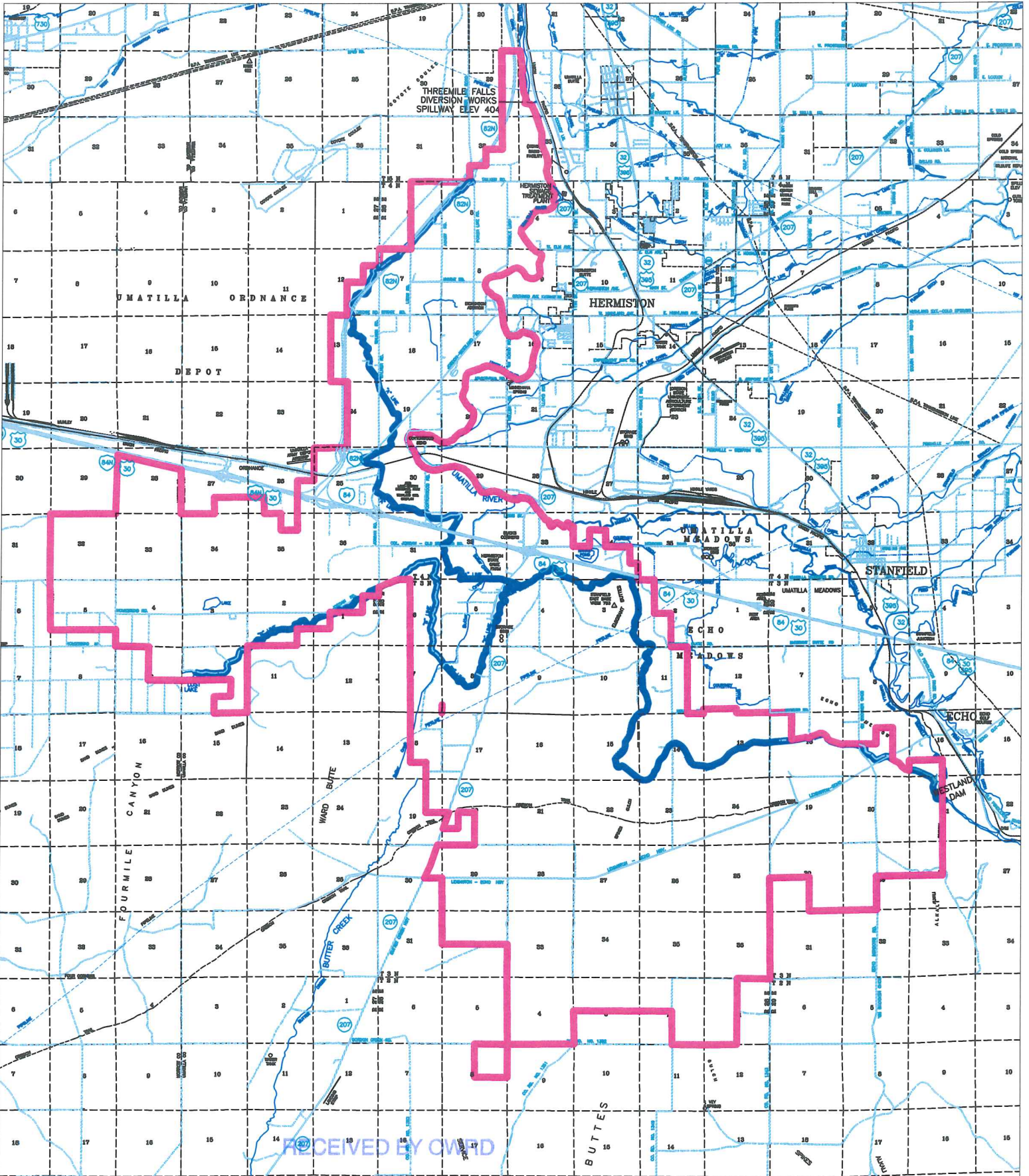
E26 & #43 TYPICAL CIRCLE NUMBERS



NOTE: PORTION OF THIS MAP IS TO INDICATE THE APPROXIMATE LOCATION OF THE WATER SERVICE. IT IS NOT INTENDED TO PROVIDE INFORMATION RELATIVE TO THE LOCATION OF PROPERTY OWNERSHIP BOUNDARY LINES.

1011293 1011593

Westland Irrigation District Boundary



LEGION:  DISTRICT BOUNDARY

MAY 06 2013

T011593

SALEM, OR



WESTLAND IRRIGATION DISTRICT
SERVICE BOUNDARY