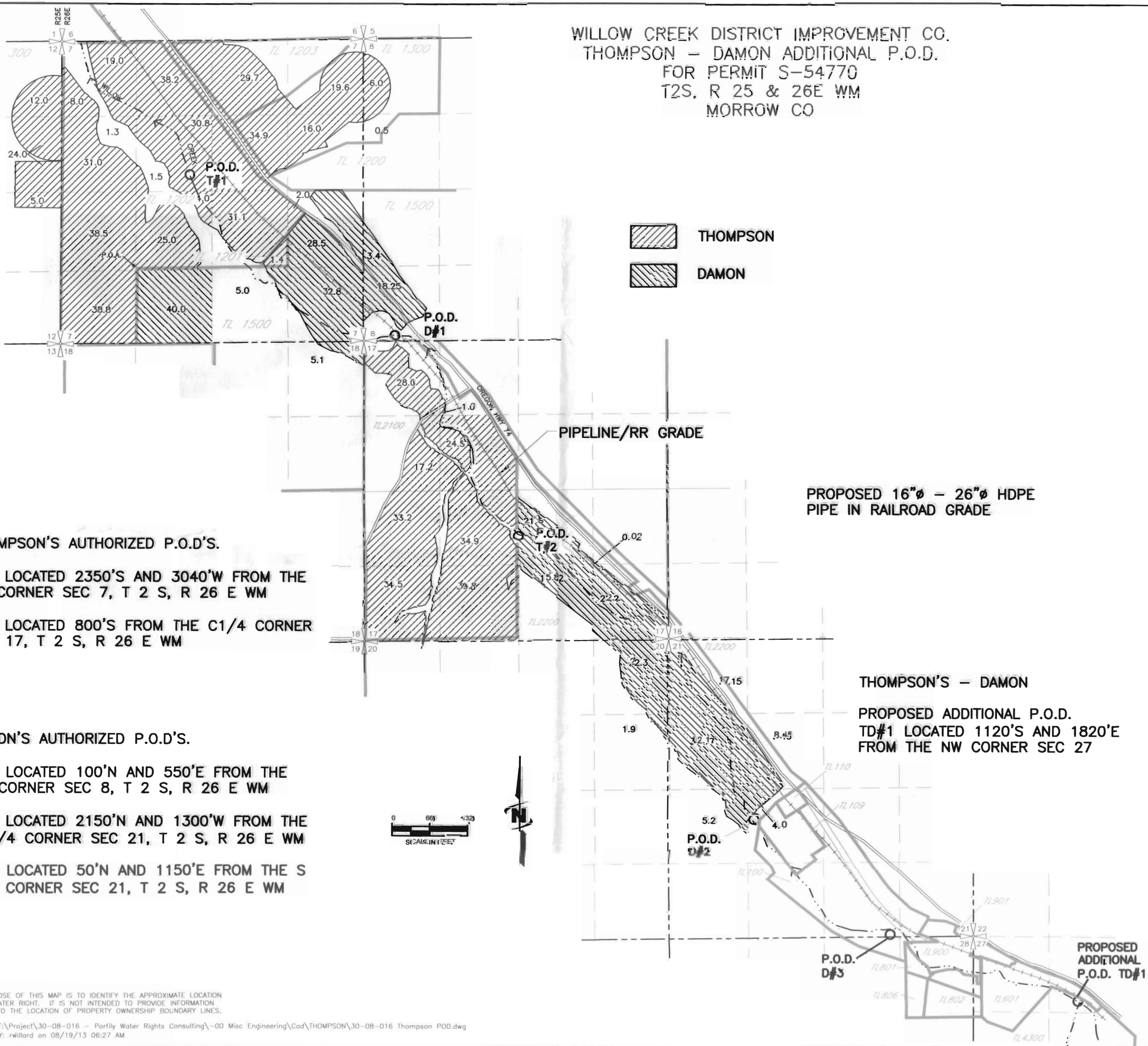




SALEM, OR  
SEP 18 2013

RECEIVED BY OWRD

WILLOW CREEK DISTRICT IMPROVEMENT CO.  
THOMPSON - DAMON ADDITIONAL P.O.D.  
FOR PERMIT S-54770  
T2S, R 25 & 26E WM  
MORROW CO



 THOMPSON  
 DAMON

PROPOSED 16" - 26" HDPE  
PIPE IN RAILROAD GRADE

**THOMPSON'S AUTHORIZED P.O.D'S.**

- T#1 LOCATED 2350'S AND 3040'W FROM THE NE CORNER SEC 7, T 2 S, R 26 E WM
- T#2 LOCATED 800'S FROM THE C1/4 CORNER SEC 17, T 2 S, R 26 E WM

**DAMON'S AUTHORIZED P.O.D'S.**

- D#1 LOCATED 100'N AND 550'E FROM THE SW CORNER SEC 8, T 2 S, R 26 E WM
- D#2 LOCATED 2150'N AND 1300'W FROM THE S 1/4 CORNER SEC 21, T 2 S, R 26 E WM
- D#3 LOCATED 50'N AND 1150'E FROM THE S 1/4 CORNER SEC 21, T 2 S, R 26 E WM

**THOMPSON'S - DAMON**

- PROPOSED ADDITIONAL P.O.D.
- TD#1 LOCATED 1120'S AND 1820'E FROM THE NW CORNER SEC 27

NOTE:  
THE PURPOSE OF THIS MAP IS TO IDENTIFY THE APPROXIMATE LOCATION OF THE WATER RIGHT. IT IS NOT INTENDED TO PROVIDE INFORMATION RELATIVE TO THE LOCATION OF PROPERTY OWNERSHIP BOUNDARY LINES.

DRAWING: F:\Project\30-08-016 - Partly Water Rights Consulting\00 Misc Engineering\Cad\THOMPSON\30-08-016 Thompson POD.dwg  
PRINTED BY: rwillard on 08/19/13 06:27 AM