

**TSN, R35E, WM
Sections 3, 4, 5, 8, 9, 10
T6N, R35E, WM
Sections 31 and 32
UMATILLA COUNTY**

- Points of Appropriation**
 - POA 3A: 1156 ft N and 314 ft E from S/4 Corner of Section 3. Flowmeter in same location. Well Log UMAT 55526.
 - POA 4A: 415 ft S and 500 ft W from Center of Section 4. Flowmeter in same location. Well Log UMAT 55523.
 - POA 4D: 375 ft S and 940 ft W from Center of Section 4. Flowmeter in same location. Well Log UMAT 56382.
 - POA 50516: 930 ft S and 1355 ft E from NW Corner of Section 4. Flowmeter in same location. Well Log UMAT 50516.
- Conveyance**

Conveyance system is buried pressure pipeline ranging in size from 6 to 15 inches in diameter. Water applied for irrigation of various crops with variety of sprinkler and drip irrigation systems.

- Place of Use**

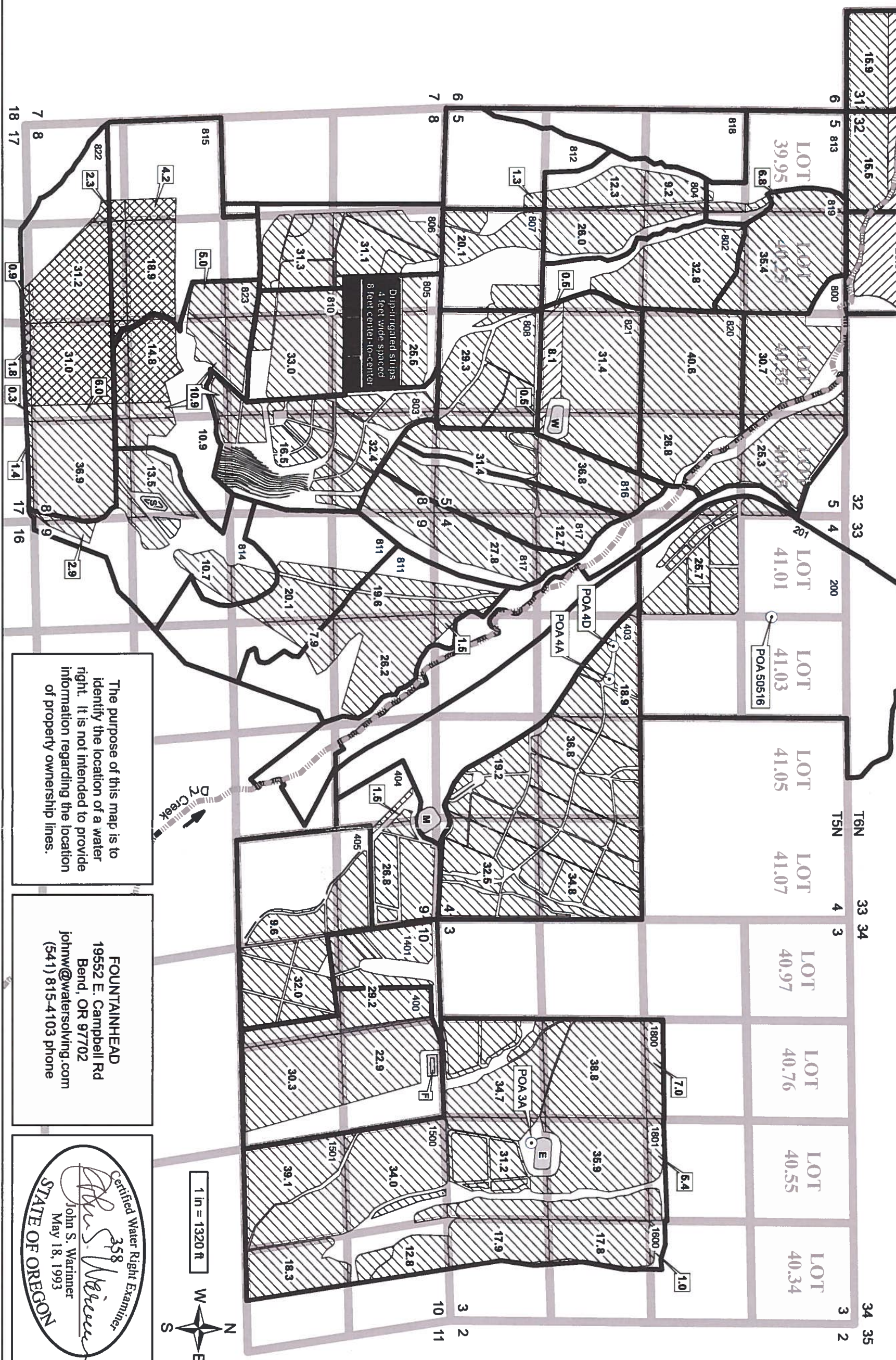
Transfer FROM 105.1 acres:

 - TSN, R35E, Sec 8, NE SW, 18.9 acres
 - TSN, R35E, Sec 8, NW SW, 4.2 acres
 - TSN, R35E, Sec 8, SW SW, 2.3 acres
 - TSN, R35E, Sec 8, SE SW, 31.2 acres
 - TSN, R35E, Sec 8, NW SE, 14.8 acres
 - TSN, R35E, Sec 8, SW SE, 31.0 acres
 - TSN, R35E, Sec 17, NW NE, 1.8 acres
 - TSN, R35E, Sec 17, NE NW, 0.9 acres

Transfer TO 105.1 acres:

 - TSN, R35E, Sec 5, NE SW, 0.5 acre
 - TSN, R35E, Sec 5, NW SE, 8.1 acres
 - TSN, R35E, Sec 5, NE SE, 0.5 acre
 - T6N, R35E, Sec 31, NE SE, 29.1 acres
 - T6N, R35E, Sec 31, SE SE, 18.4 acres
 - T6N, R35E, Sec 32, SW SW, 21.7 acres
 - T6N, R35E, Sec 32, SE SW, 26.8 acres

Remaining acres not included in transfer



**Drip-irrigated strips
4 feet wide spaced
8 feet center-to-center**

The purpose of this map is to identify the location of a water right. It is not intended to provide information regarding the location of property ownership lines.

FOUNTAINHEAD
19552 E. Campbell Rd
Bend, OR 97702
johnw@watersolving.com
(541) 815-4103 phone

Certified Water Right Examiner
358
John S. Wariner
John S. Wariner
May 18, 1993
STATE OF OREGON

TEMPORARY TRANSFER MAP
Certificate 86441
In the name of
HIGH RIDGE PROPERTY LLC
Revised: 25 SEP 2013

1011667
RECEIVED BY OWRD
SEP 30 2013
SALEM, OR

