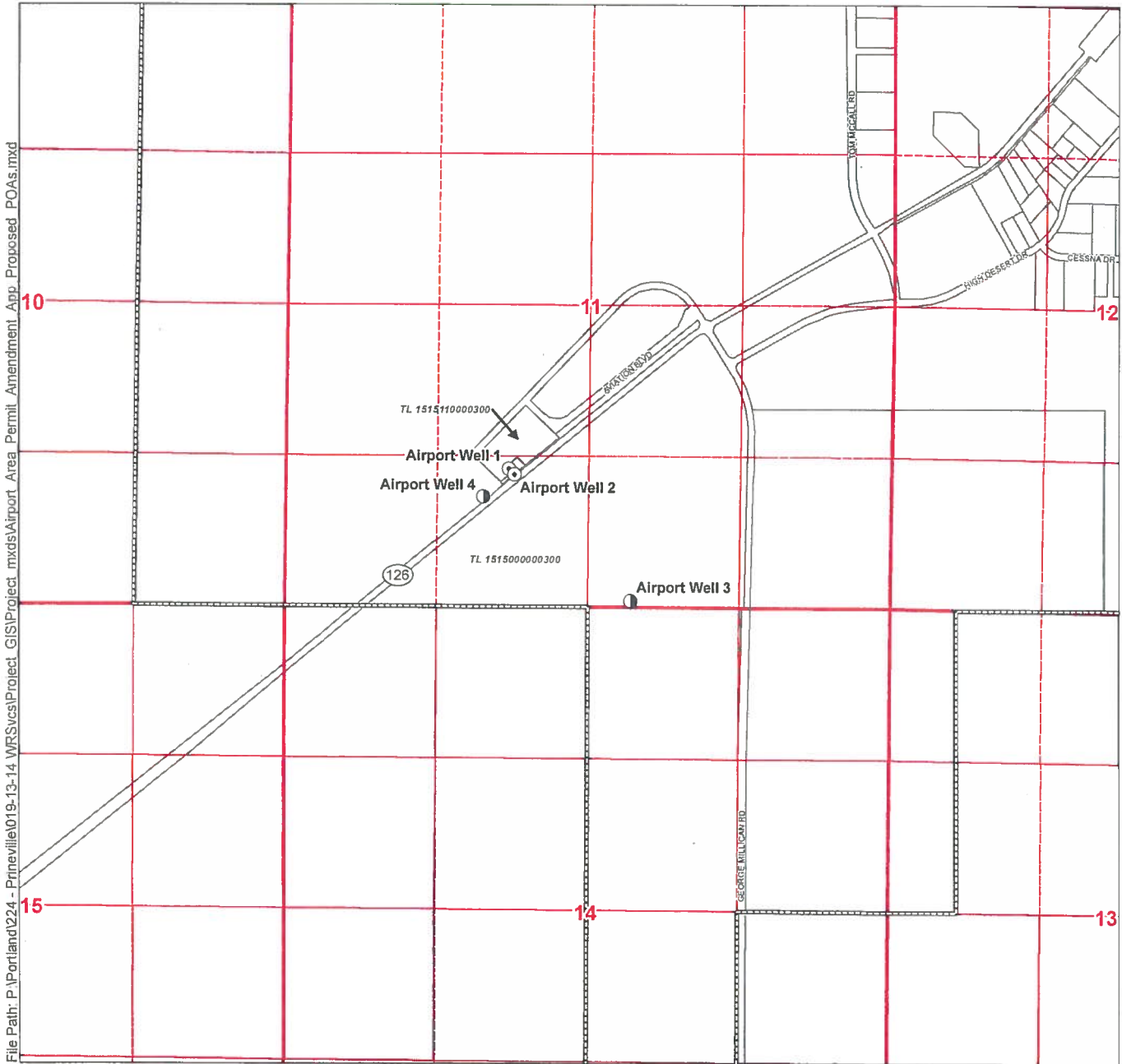


Application for a Permit Amendment in the Name of City of Prineville Proposed Points of Appropriation

Permit G-16879, Application G-16900

Township 15 South, Range 15 East (W.M.)



File Path: P:\Portland\224 - Prineville\019-13-14 WRS\svcs\Project_GIS\Project_mxds\Airport_Area_Permit_Amendment_App_Proposed_POAs.mxd

LEGEND

- Proposed Point of Appropriation (POA)
- Authorized POA
- Prineville City Limits
- Tax Lots

POA LOCATION DESCRIPTIONS

Airport Well 1
1,210 feet North and 1,950 feet East from the SW corner of Section 11, Township 15 South, Range 15 East (W.M.)

Airport Well 2
1,165 feet North and 1,990 feet East from the SW corner of Section 11, Township 15 South, Range 15 East (W.M.)

Airport Well 3
55 feet North and 3,000 feet East from the SW corner of Section 11, Township 15 South, Range 15 East (W.M.)

Airport Well 4
1,070 feet North and 1,710 feet East from SW corner of Section 11, Township 15 South, Range 15 East (W.M.)

DISCLAIMER

This map was prepared for the purpose of identifying the location of a water right only and it is not intended to provide legal dimensions or location of property ownership lines.

MAP NOTES

Date: September 5, 2013
Data Sources: OWRD, Crook Co. GIS, OGIC
Prepared By: GSI Water Solutions, Inc.

RECEIVED BY OWRD

NOV 18 2013

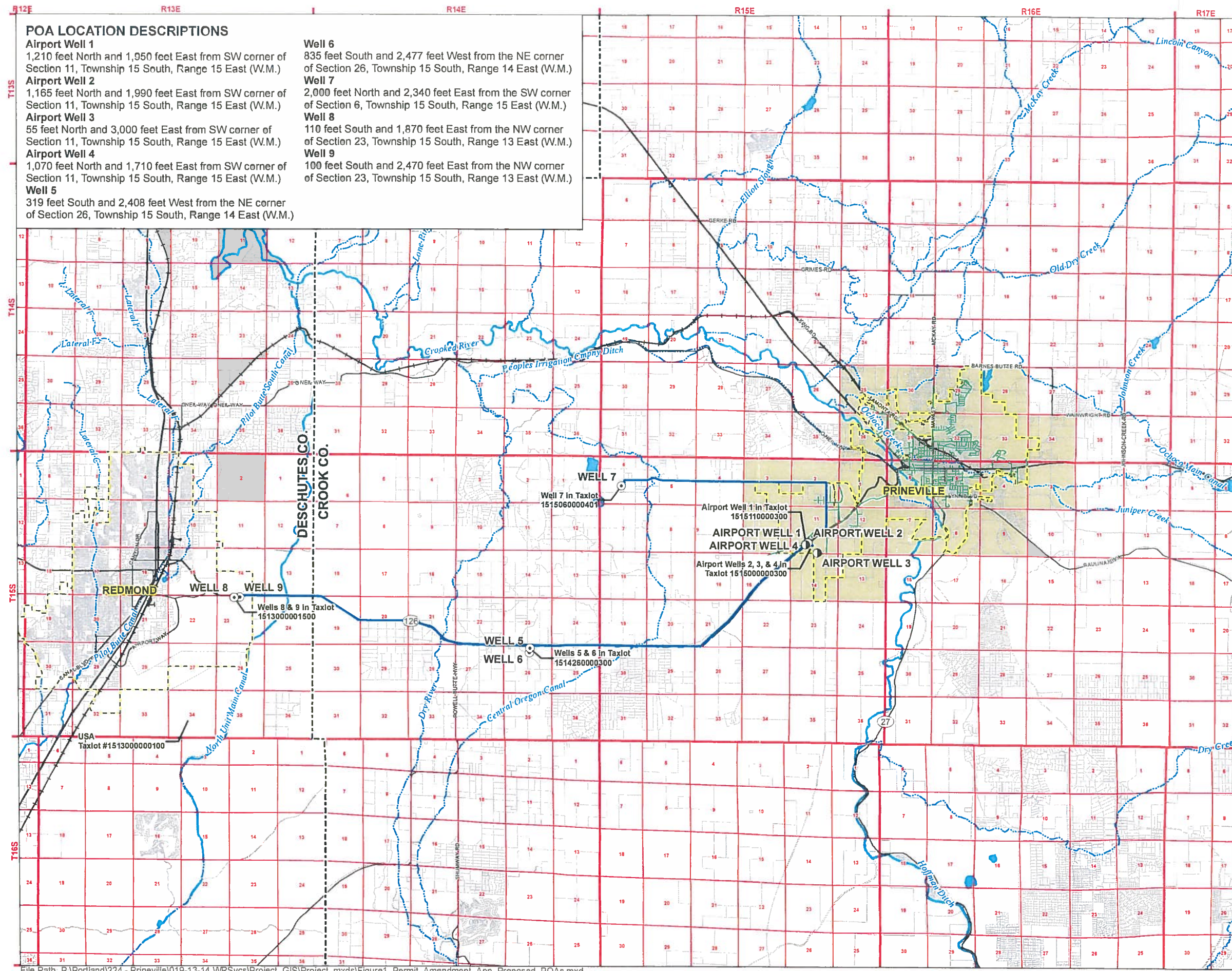
SALEM, OR

T011655



0 660 1,320
Feet





POA LOCATION DESCRIPTIONS

Airport Well 1
1,210 feet North and 1,950 feet East from SW corner of Section 11, Township 15 South, Range 15 East (W.M.)

Airport Well 2
1,165 feet North and 1,990 feet East from SW corner of Section 11, Township 15 South, Range 15 East (W.M.)

Airport Well 3
55 feet North and 3,000 feet East from SW corner of Section 11, Township 15 South, Range 15 East (W.M.)

Airport Well 4
1,070 feet North and 1,710 feet East from SW corner of Section 11, Township 15 South, Range 15 East (W.M.)

Well 5
319 feet South and 2,408 feet West from the NE corner of Section 26, Township 15 South, Range 14 East (W.M.)

Well 6
835 feet South and 2,477 feet West from the NE corner of Section 26, Township 15 South, Range 14 East (W.M.)

Well 7
2,000 feet North and 2,340 feet East from the SW corner of Section 6, Township 15 South, Range 15 East (W.M.)

Well 8
110 feet South and 1,870 feet East from the NW corner of Section 23, Township 15 South, Range 13 East (W.M.)

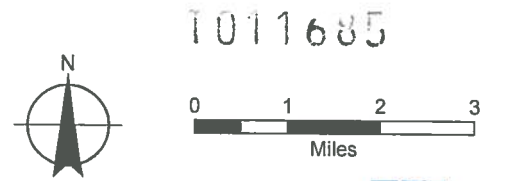
Well 9
100 feet South and 2,470 feet East from the NW corner of Section 23, Township 15 South, Range 13 East (W.M.)

FIGURE 1
Application for a Permit Amendment
in the Name of City of Prineville
Proposed Points of Appropriation

- LEGEND**
- Proposed Point of Appropriation (POA)
 - ⊙ Authorized POA
 - Authorized Place of Use (POU)
 - Proposed Water Mainline
 - Existing Water Mainlines
 - ⊞ Cities
 - ⊞ Tax Lots
 - ⚡ Highways
 - ⚡ Major Roads
 - ⚡ Railroads
 - ~ Watercourses
 - ⊞ Waterbodies

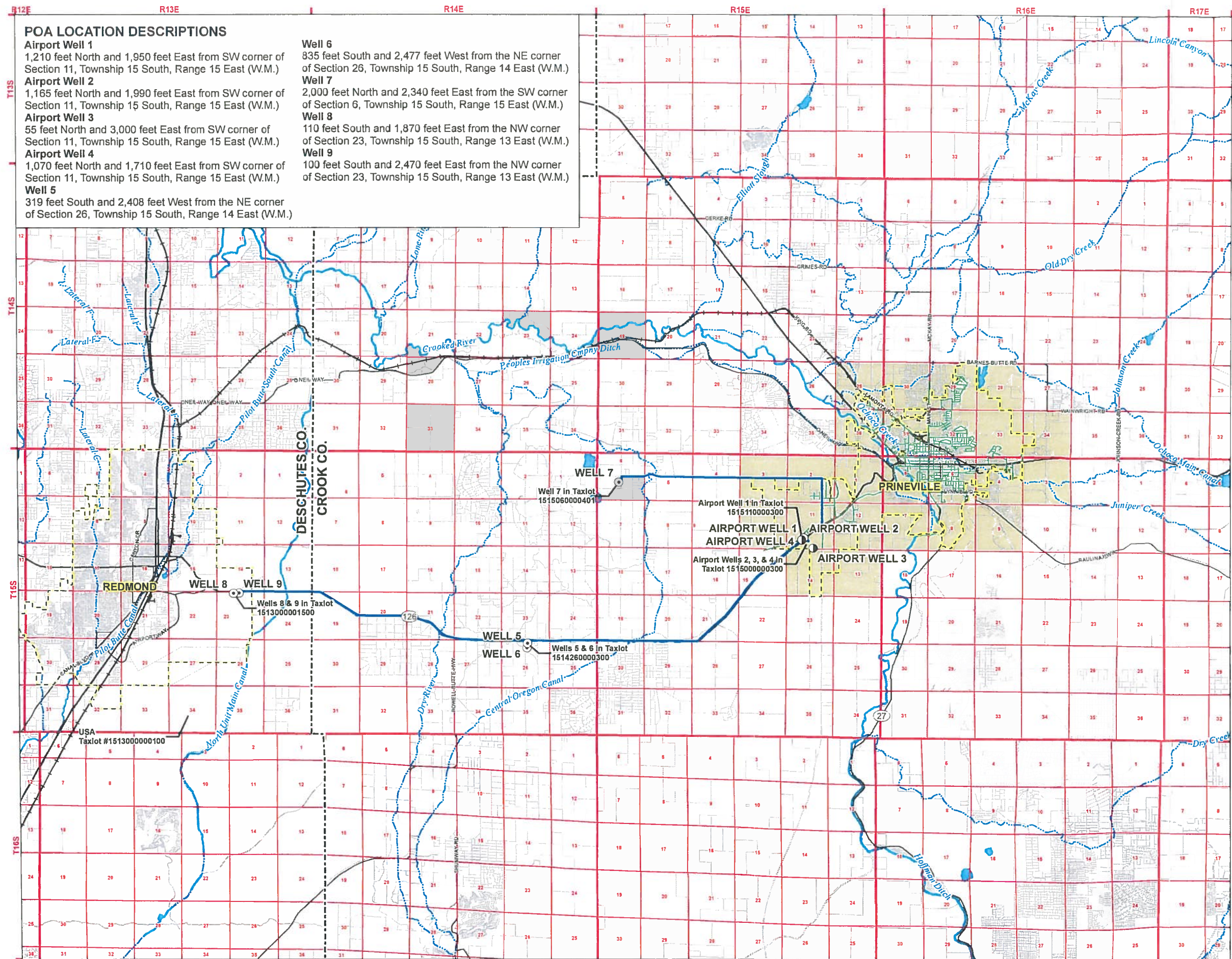
RECEIVED BY OWRD
NOV 18 2013
SALEM, OR

DISCLAIMER
This map was prepared for the purpose of identifying the location of a water right only and it is not intended to provide legal dimensions or location of property ownership lines.



MAP NOTES:
Date: September 10, 2013
Data Sources: OWRD, Crook Co. GIS, OGIC, ESRI





POA LOCATION DESCRIPTIONS

Airport Well 1
1,210 feet North and 1,950 feet East from SW corner of Section 11, Township 15 South, Range 15 East (W.M.)

Airport Well 2
1,165 feet North and 1,990 feet East from SW corner of Section 11, Township 15 South, Range 15 East (W.M.)

Airport Well 3
55 feet North and 3,000 feet East from SW corner of Section 11, Township 15 South, Range 15 East (W.M.)

Airport Well 4
1,070 feet North and 1,710 feet East from SW corner of Section 11, Township 15 South, Range 15 East (W.M.)

Well 5
319 feet South and 2,408 feet West from the NE corner of Section 26, Township 15 South, Range 14 East (W.M.)

Well 6
835 feet South and 2,477 feet West from the NE corner of Section 26, Township 15 South, Range 14 East (W.M.)

Well 7
2,000 feet North and 2,340 feet East from the SW corner of Section 6, Township 15 South, Range 15 East (W.M.)

Well 8
110 feet South and 1,870 feet East from the NW corner of Section 23, Township 15 South, Range 13 East (W.M.)

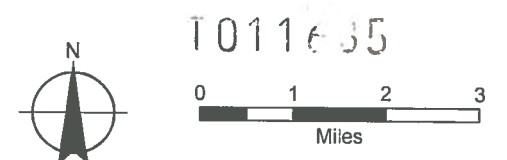
Well 9
100 feet South and 2,470 feet East from the NW corner of Section 23, Township 15 South, Range 13 East (W.M.)

FIGURE 1
Application for a Permit Amendment
in the Name of City of Prineville
Proposed Points of Appropriation

- LEGEND**
- Proposed Point of Appropriation (POA)
 - Authorized POA
 - Authorized Place of Use (POU)
 - Proposed Water Mainline
 - Existing Water Mainlines
 - Cities
 - Tax Lots
 - Highways
 - Major Roads
 - Railroads
 - Watercourses
 - Waterbodies

RECEIVED BY OWRD
NOV 18 2013
SALEM, OR

DISCLAIMER
This map was prepared for the purpose of identifying the location of a water right only and it is not intended to provide legal dimensions or location of property ownership lines.



MAP NOTES:
Date: September 10, 2013
Data Sources: OWRD, Crook Co GIS, OGIC, ESRI
GSI Water Solutions, Inc.