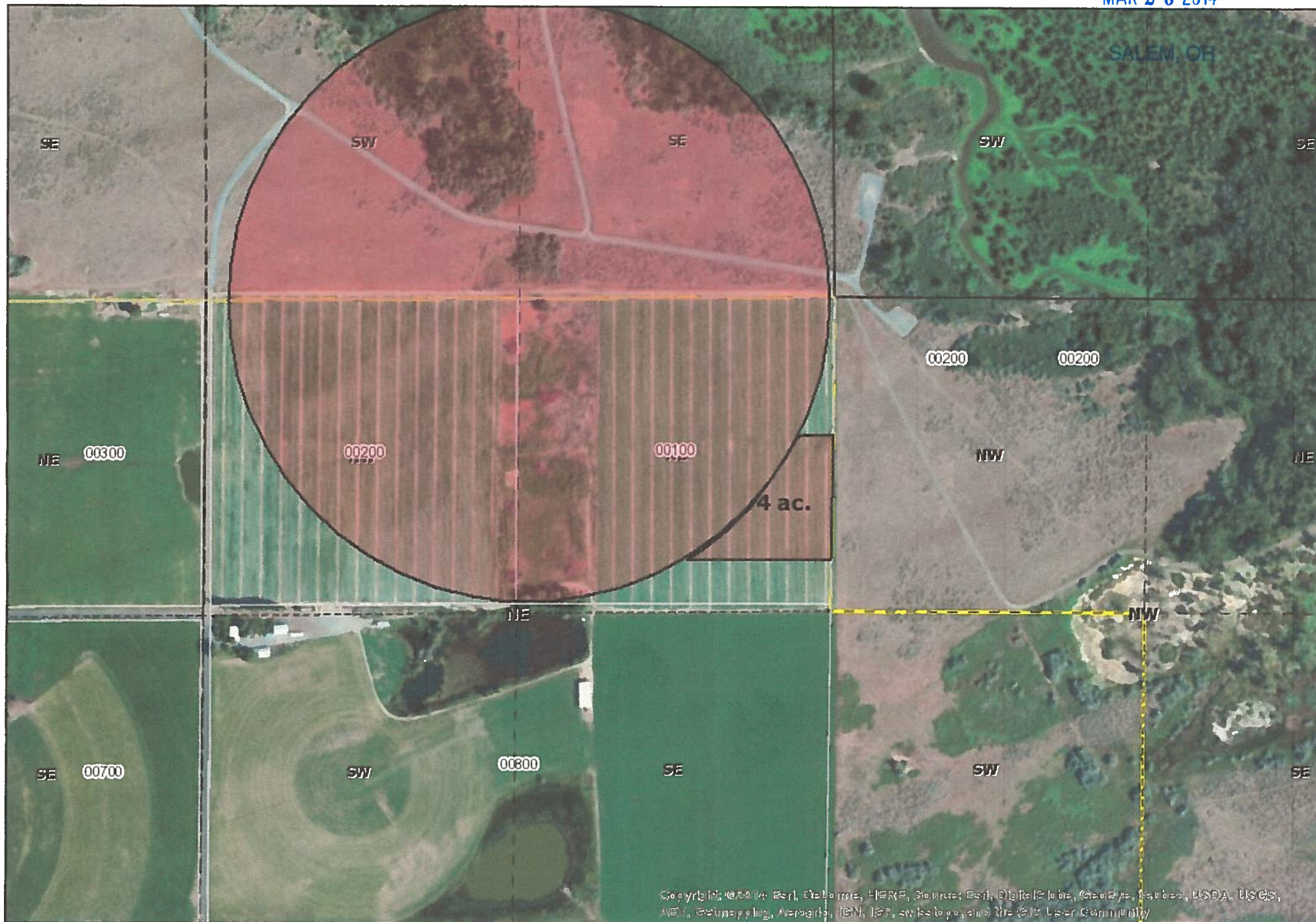


VanDeBrake

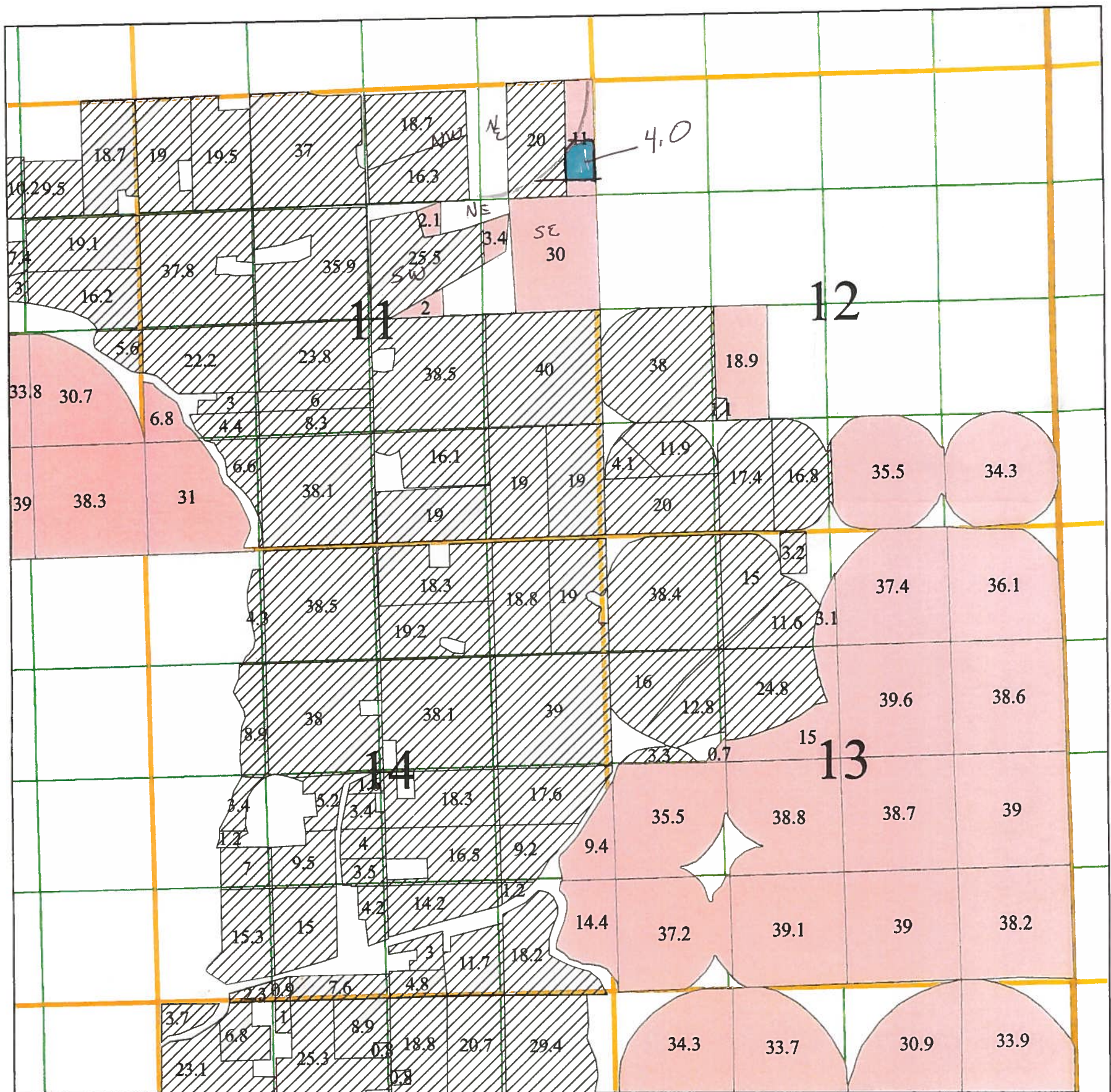
MAR 26 2014



Copyright © 2014 Esri, DeLorme, HERE, Source: Esri, DigitalGlobe, GeoEye, USDA, USGS, Aerial, Geoprocessing, Aerials, TERN, IEP, Swisstopo, and the GIS User Community

TOWNSHIP 4 NORTH, RANGE 29 EAST, W.M.

SECTIONS 11, 12, 13, and 14



Legend
stan429final
Priority
 1905
 1965

1 inch = 1320 feet



RECEIVED BY OWRD

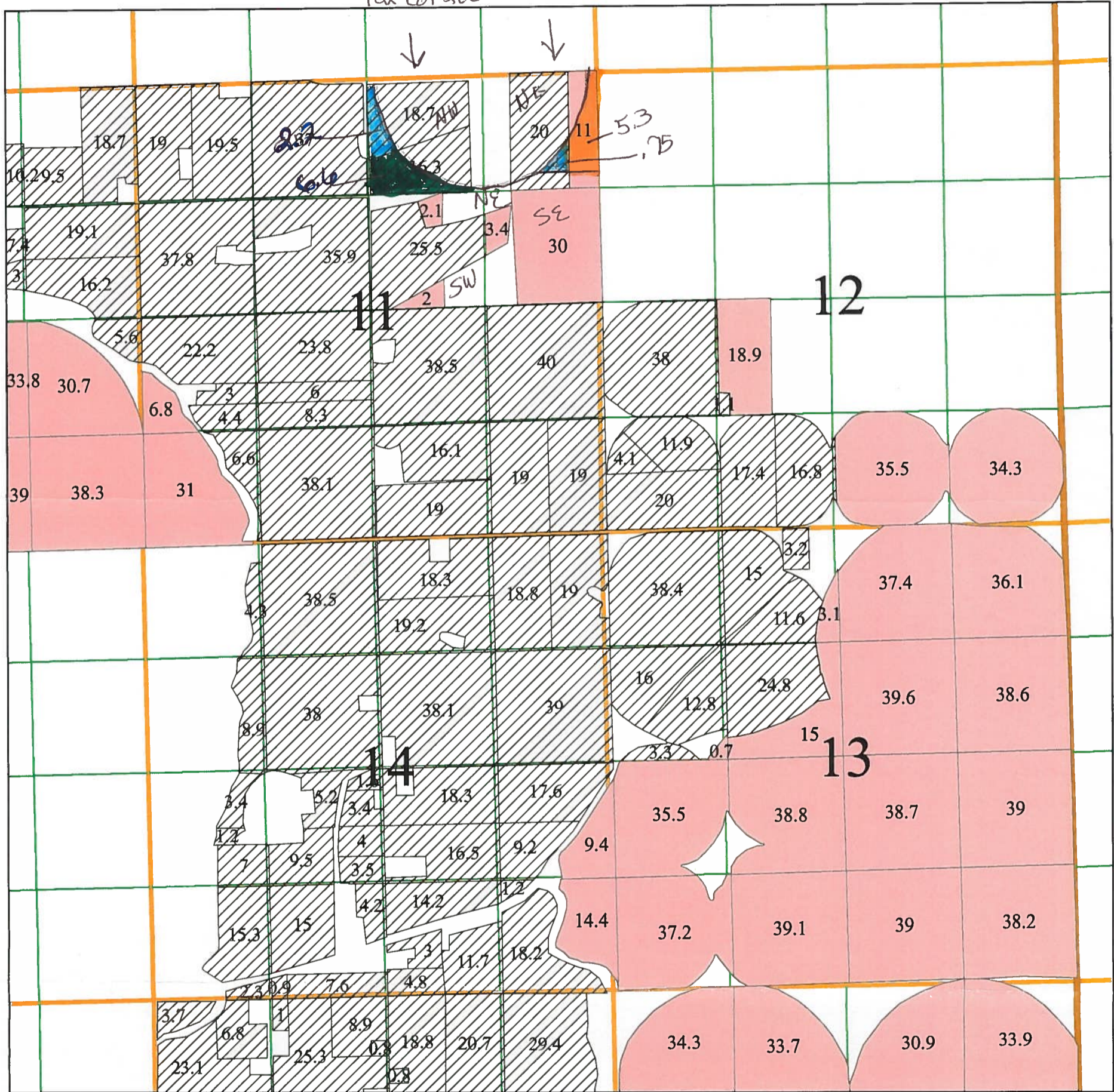
MAR 26 2014

SALEM, OR

TOWNSHIP 4 NORTH, RANGE 29 EAST, W.M.

SECTIONS 11, 12, 13, and 14

Tax Lot 200 Tax Lot 100



Legend
stan429final
Priority
 1905
 1965

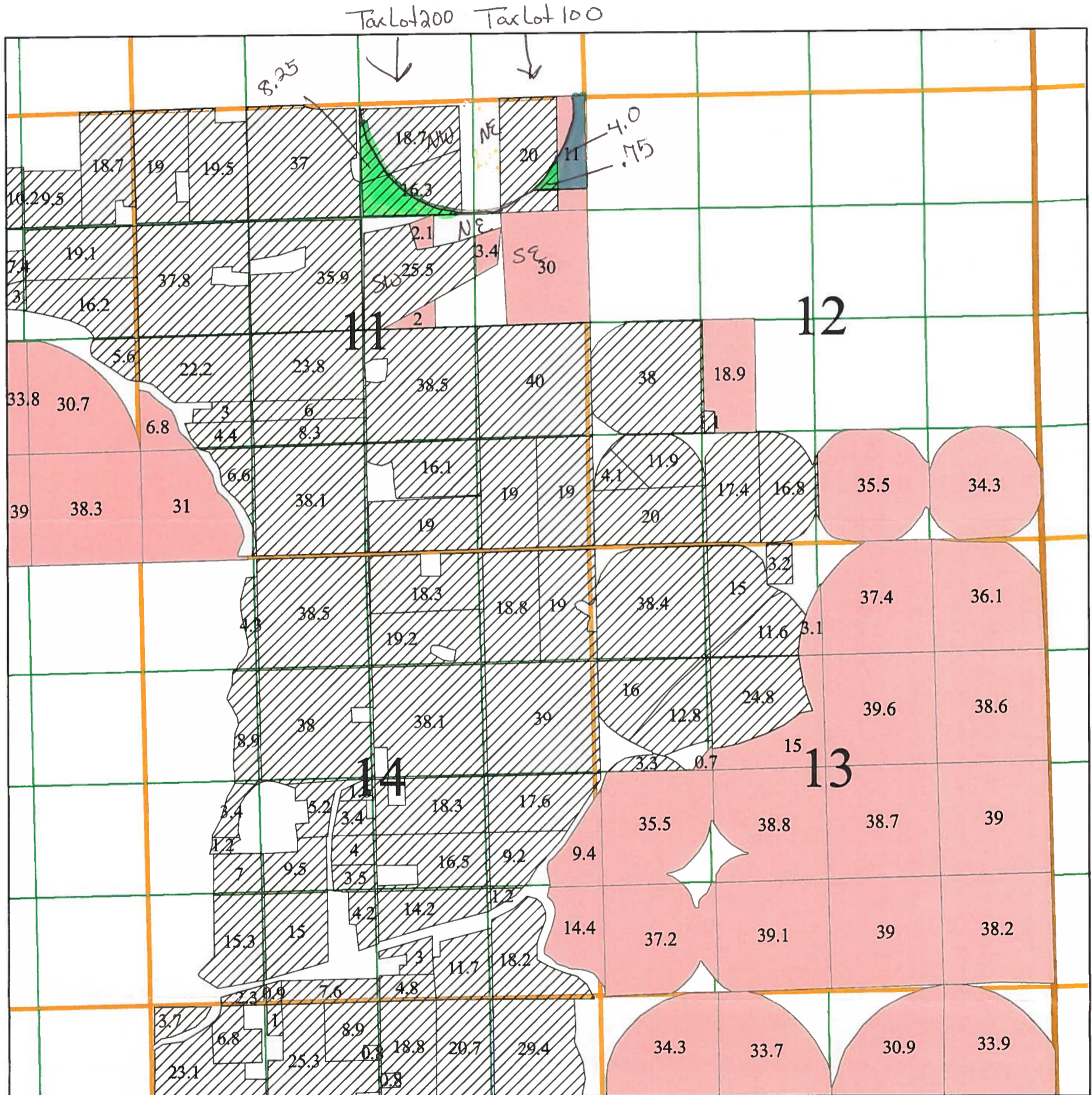
Cert. 74657 - 1964 - NE NE - .75 ac.
 Cert. 74657 - 1964 - NW NE - 2.2 ac.
 1 inch = 1320 feet


Cert. 746137 - 1977 - NWNE - 6.6 ac.
 Cert. 746122 - 1964 - NENE - 5.3
From Lands

RECEIVED BY OWRD
 FEB 19 2014
 SALEM, OR

TOWNSHIP 4 NORTH, RANGE 29 EAST, W.M.

SECTIONS 11, 12, 13, and 14



Legend
stan429final
Priority
 1905
 1965

From Land

1 inch = 1320 feet

~~Cert. 86202~~ - 1905 - NENE - 4.00 ac
~~Cert. 86377~~ - 1924 - NENE - 4.00

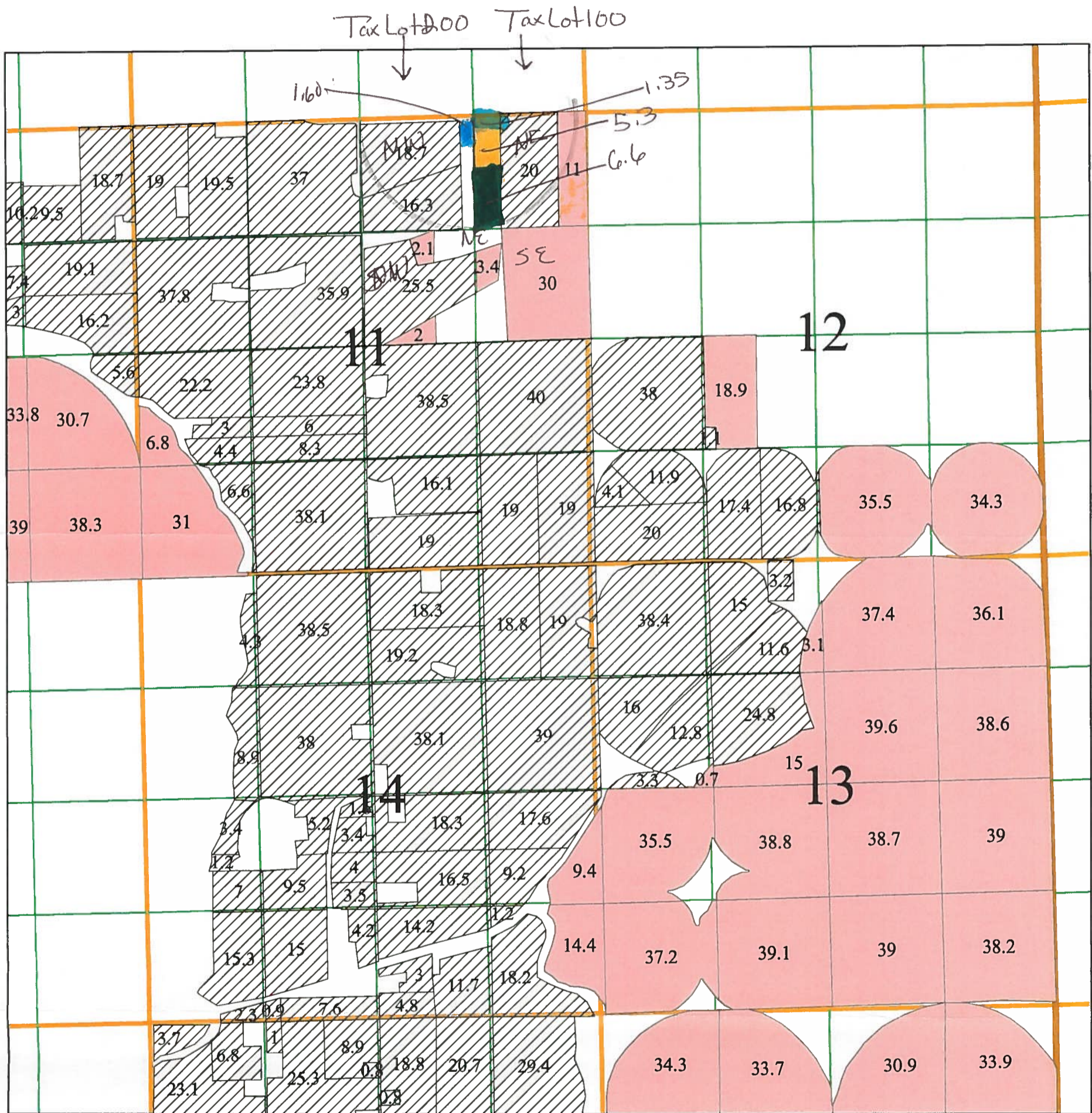
Cert. 86202 - 1905 - NWNE - 8.25
 Cert. 86377 - 1924 - NWNE - 8.25
 Cert. 86203 - 1965 - NENE - .75
 Cert. 86377 - 1924 - NE-NE - .75

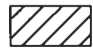



RECEIVED BY OWRD
 FEB 19 2014
 SALEM, OR

TOWNSHIP 4 NORTH, RANGE 29 EAST, W.M.

SECTIONS 11, 12, 13, and 14



Legend
stan429final
Priority
 1905
 1965

To Land

1 inch = 1320 feet

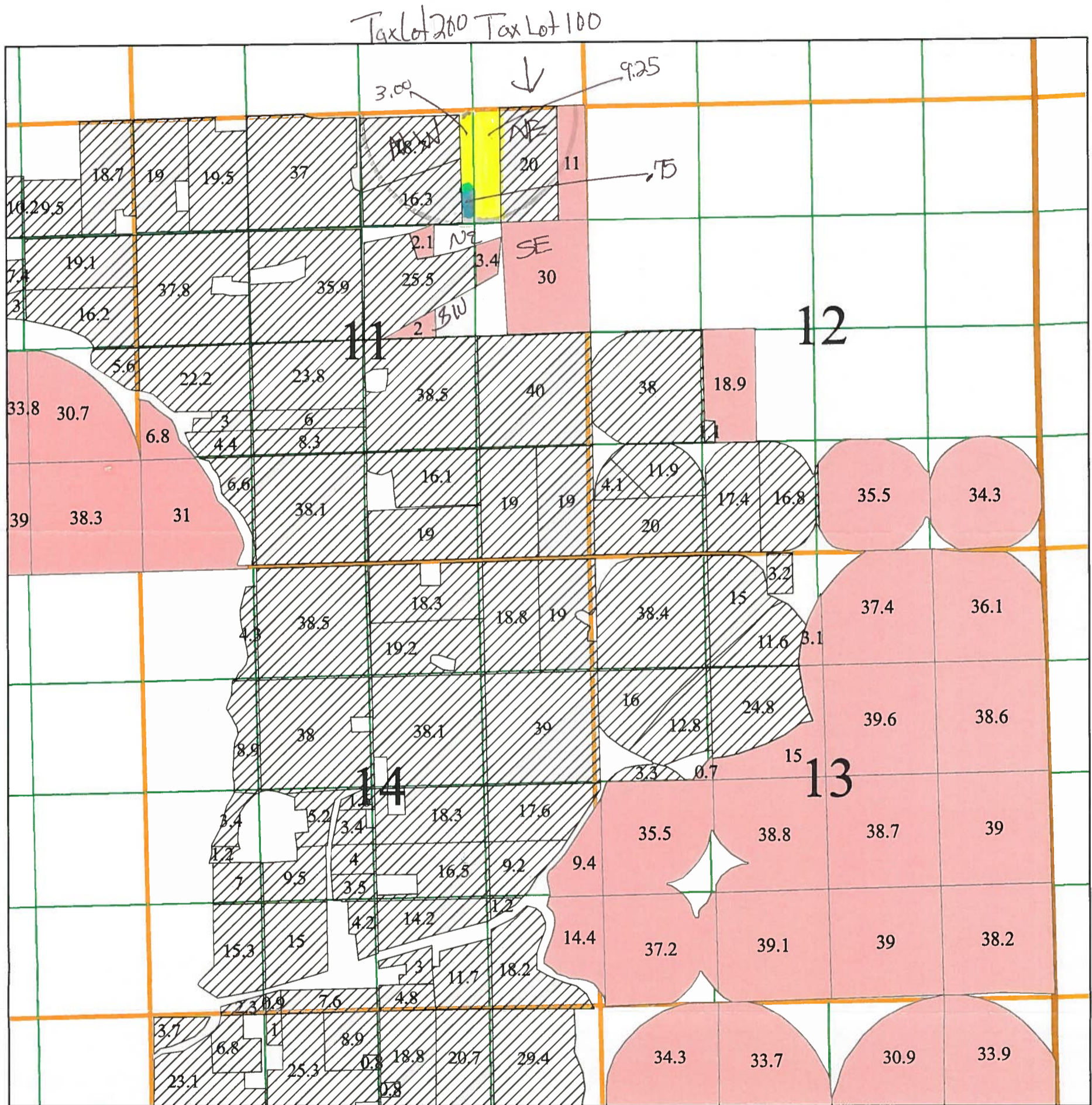
Cert. 74654 - 1964 - NWNE - 1.60
 Cert. 74657 - 1964 NE NE - 1.35
 Cert. 76137 - 1977 NE NE - 6.6
 Cert. 76132 - 1964 NE-NE - 5.30



per phone call
 13-5-14
 1.35 suppl
 + 6.6
 stacked on
 one another

RECEIVED BY OWRD
 FEB 19 2014
 SALEM, OR

TOWNSHIP 4 NORTH, RANGE 29 EAST, W.M.

SECTIONS 11, 12, 13, and 14



Legend
stan429final
Priority
 1905
 1965

To Land

1 inch = 1320 feet

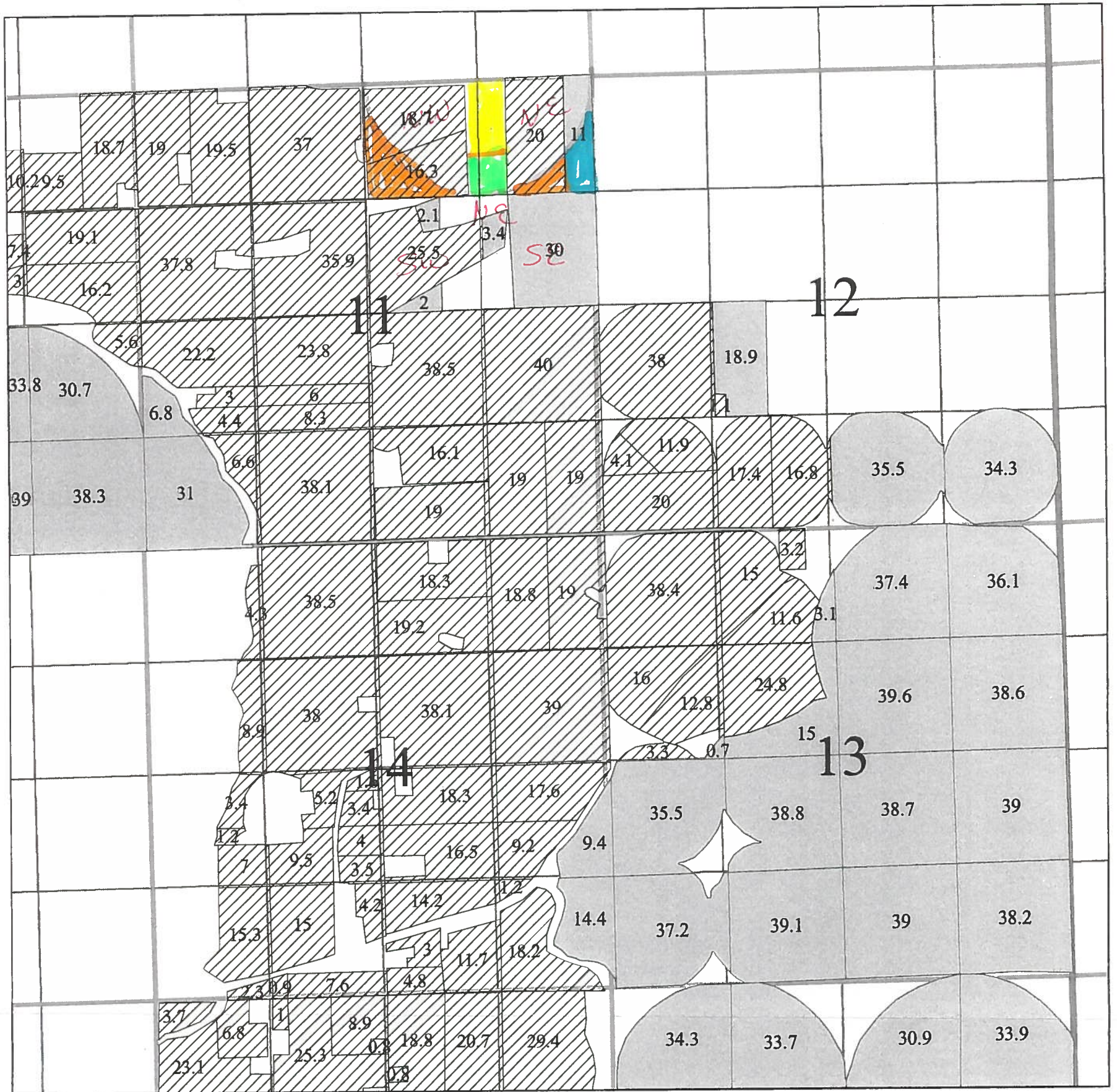
Cert 86202 - 1905 - 9.25 NE NE
 Cert 86377 - 1924 - 9.25 NE NE
 Cert 86202 - 1905 - 3.00 NW NE
 Cert 86377 - 1924 - 3.00 NW NE
 Cert 86203 - 1965 - .75 NW NE
 Cert 86377 - 1924 - .75 NW NE



RECEIVED BY OWRD
 FEB 19 2014
 SALEM, OR

TOWNSHIP 4 NORTH, RANGE 29 EAST, W.M.

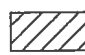

SECTIONS 11, 12, 13, and 14




Legend

stan429final

Priority

-  1905
-  1965

1 inch = 1320 feet

-  1905 - From
-  1905 - To
-  1965 From
-  1965 To

RECEIVED BY OWRD

NOV 22 2013

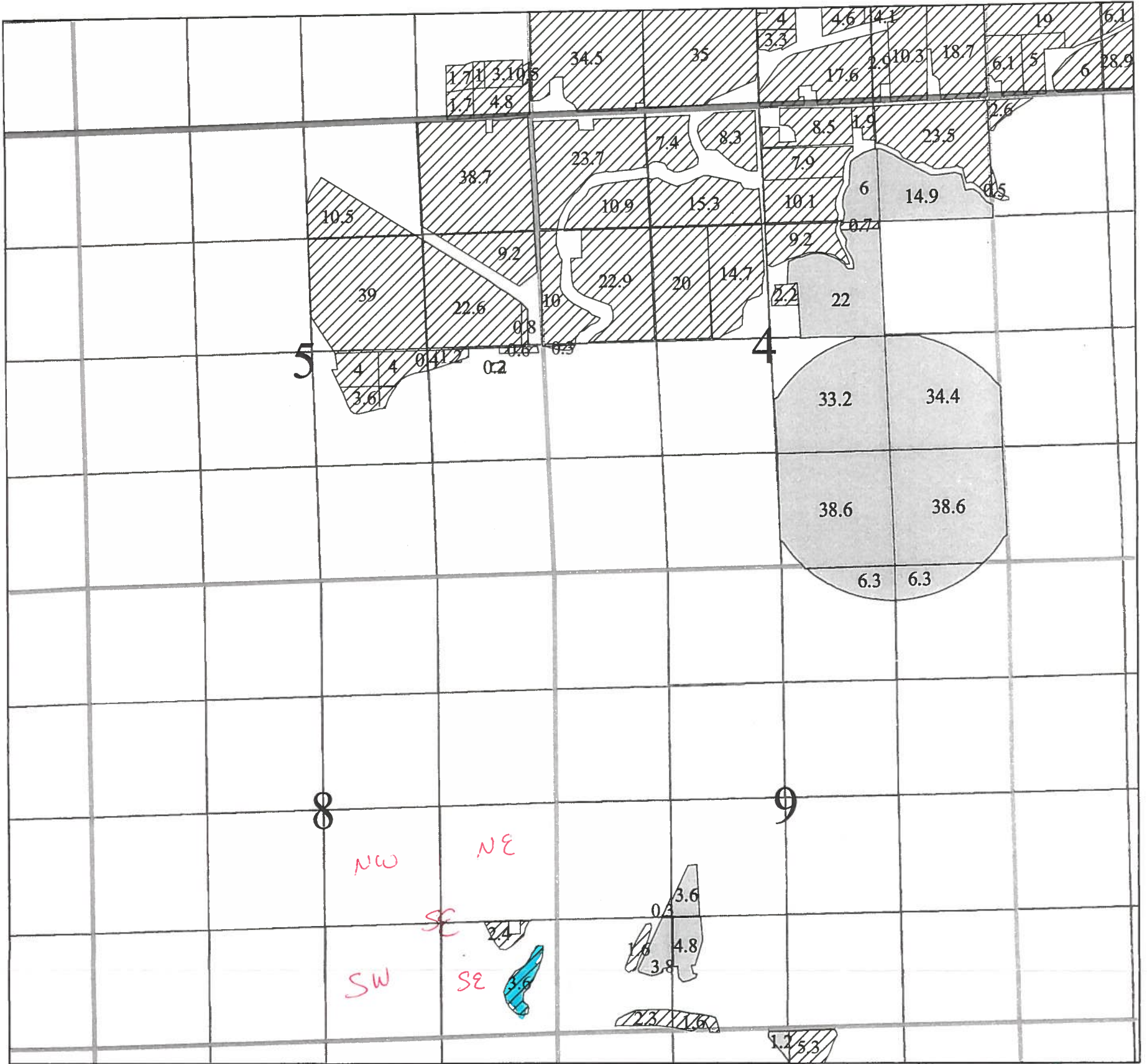
SALEM, OR

1011693

RECEIVED BY OWRD
NOV 22 2013
SALEM, OR

TOWNSHIP 3 NORTH, RANGE 29 EAST, W.M.

SECTIONS 4, 5, 8, and 9



Legend

stan329final

1 inch = 1320 feet

Priority

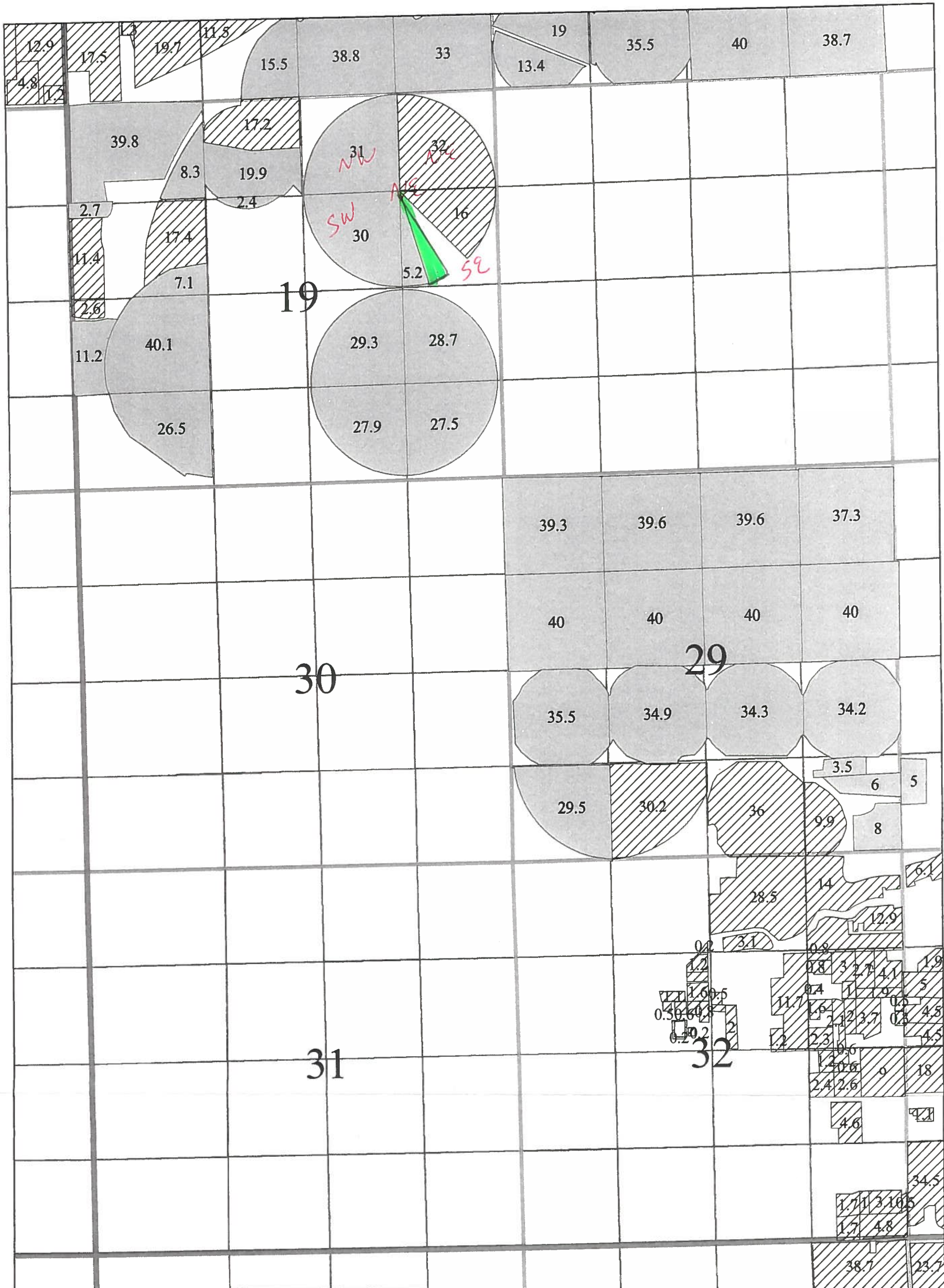
 1905

 1965

 - 1905 From

TOWNSHIP 4 NORTH, RANGE 29 EAST, W.M.



SECTIONS 19, 29, and 32



Legend

stan429final

Priority

-  1905
-  1965

1 inch = 1320 feet

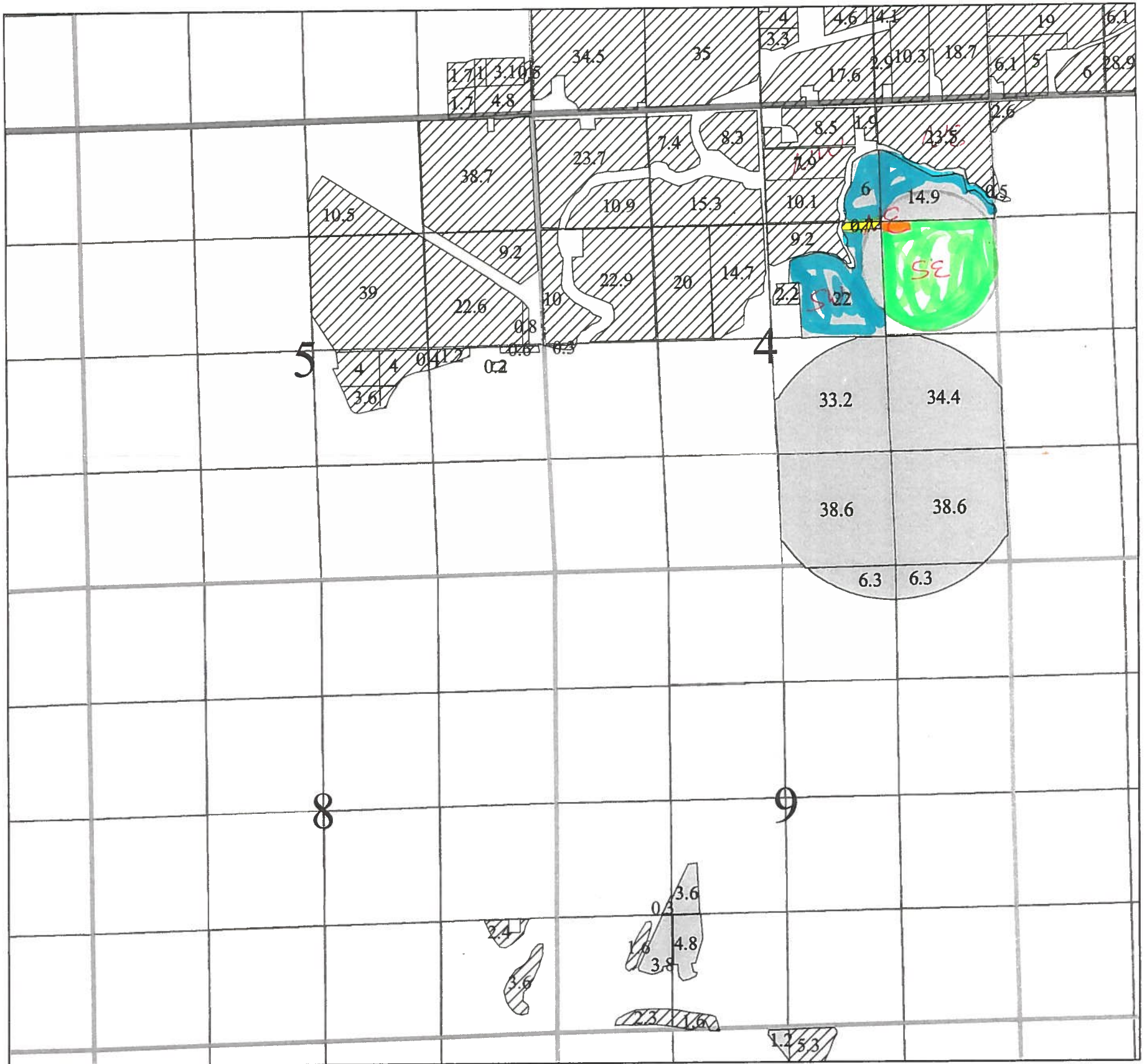
 - 1905 - 10



T011693

TOWNSHIP 3 NORTH, RANGE 29 EAST, W.M.

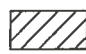

SECTIONS 4, 5, 8, and 9







Legend

stan329final

Priority

-  1905
-  1965

1 inch = 1320 feet

-  - 1905 From
-  - 1905 To T011693
-  - 1965 From
-  - 1965 To

RECEIVED BY OWRD

NOV 22 2013

SALEM, OR