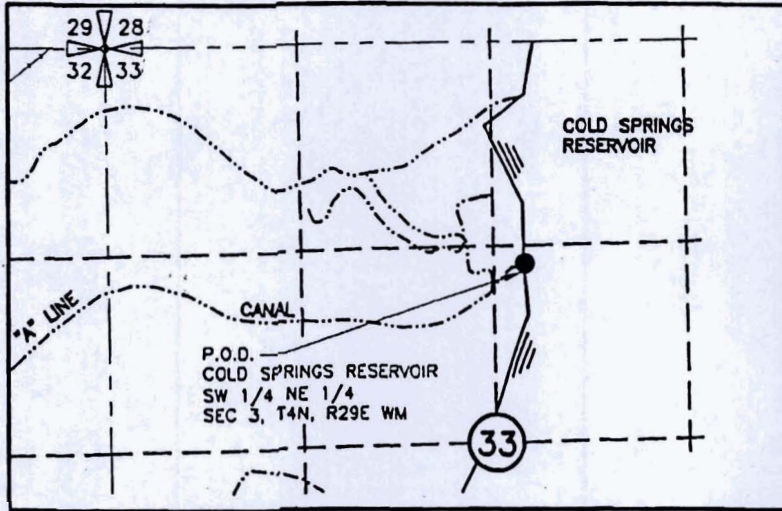
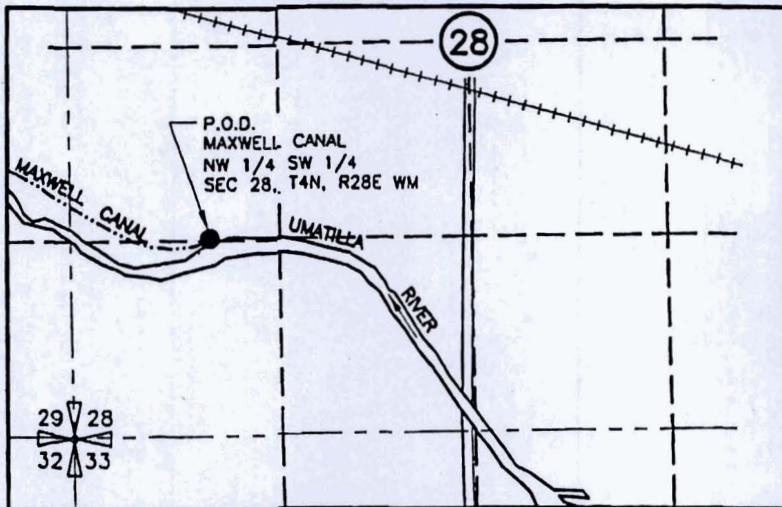


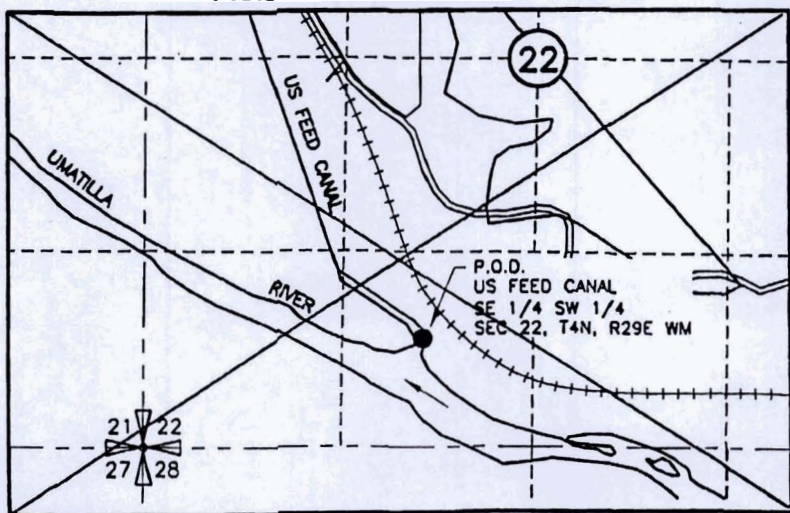
P.O.D. "A" LINE CANAL



P.O.D. MAXWELL CANAL



P.O.D. US FEED CANAL



RECEIVED BY OWRD

DEC 04 2013

SALEM, OR

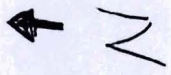


0 1320 2640



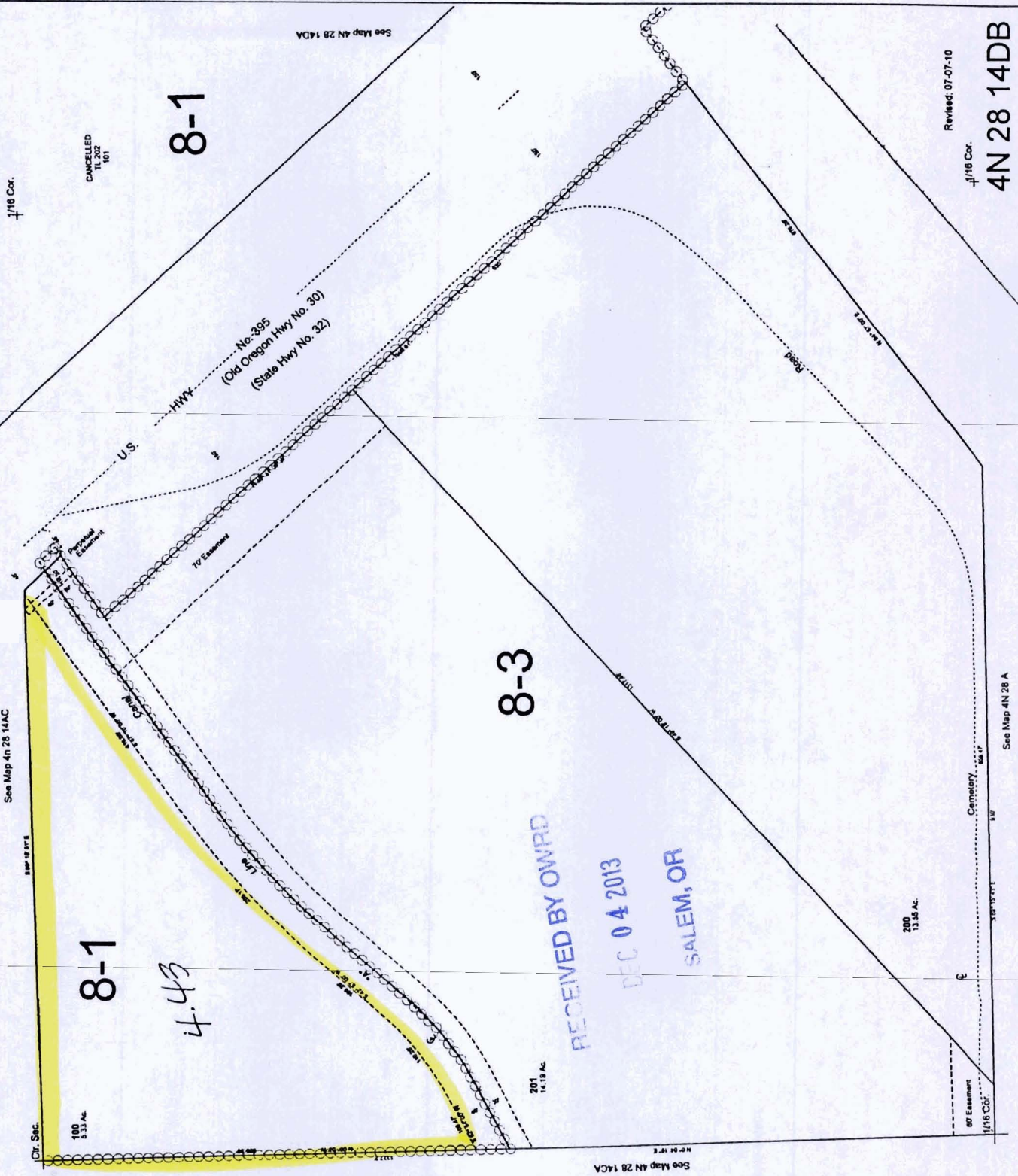
SCALE IN FEET

T011695



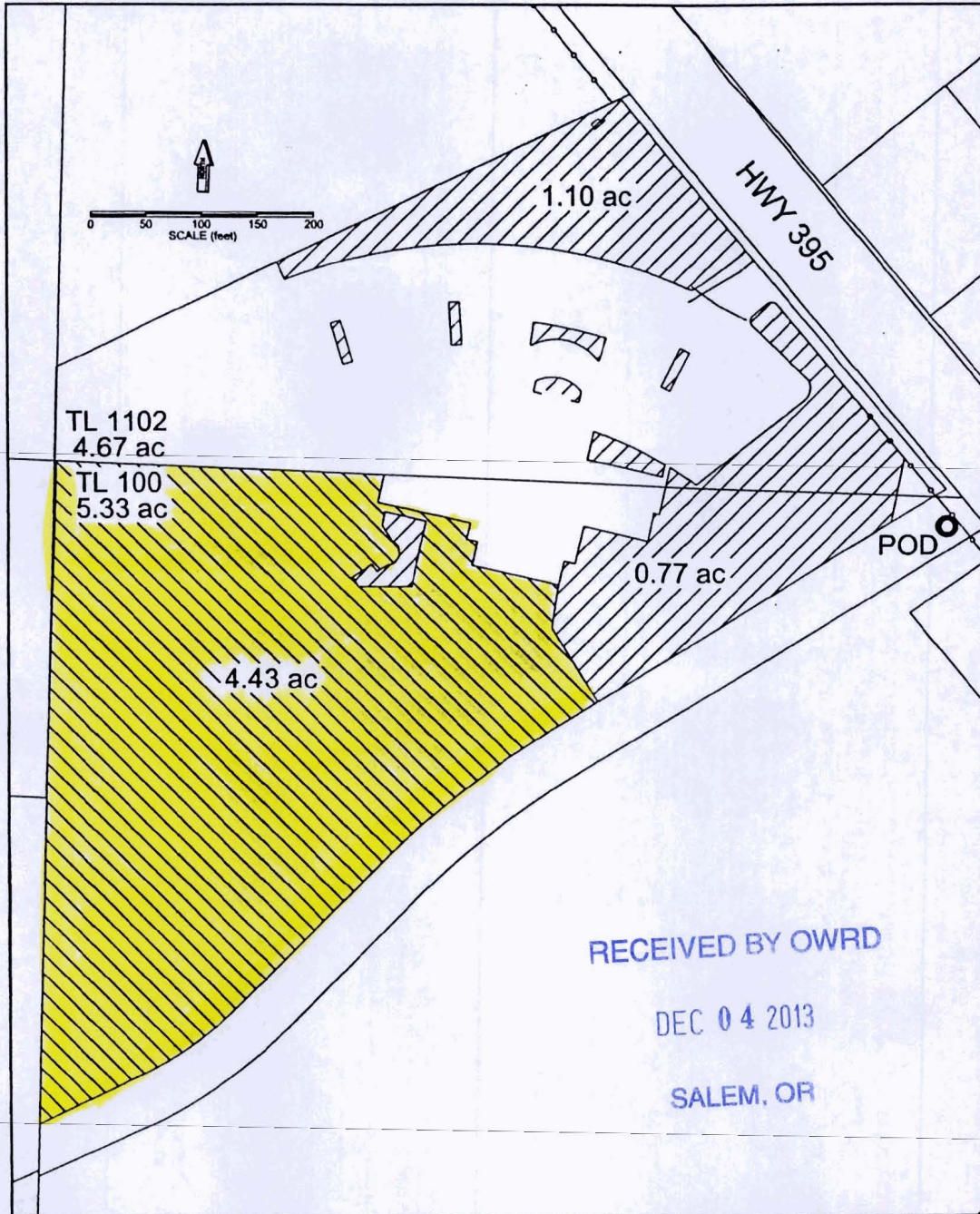
4448014 UD
FROM

SCALE 1"=100'
400




1011695

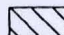
SW 1/4 NE 1/4 AND NW 1/4 SE 1/4, SEC 14, T4N R28E, W.M.
UMATILLA COUNTY



LEGEND

TL 1102 TAX LOT NUMBER

 1.87 ACRE PORTION OF WATER RIGHT TO BE RETAINED.

 4.43 ACRE PORTION OF WATER RIGHT TO BE MOVED.

POD: NW 1/4 SE 1/4, SECTION 14, T4N, R28E, W.M.; 26 FEET SOUTH AND 806 FEET EAST FROM CENTER, SECTION 14.

Water Right Transfer Map

March 19th, 2013

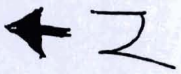
THIS MAP WAS PREPARED FOR THE PURPOSE OF IDENTIFYING THE LOCATION OF A WATER RIGHT ONLY AND IS NOT INTENDED TO PROVIDE LEGAL DIMENSIONS OR LOCATION OF PROPERTY OWNERSHIP LINES.

1011695

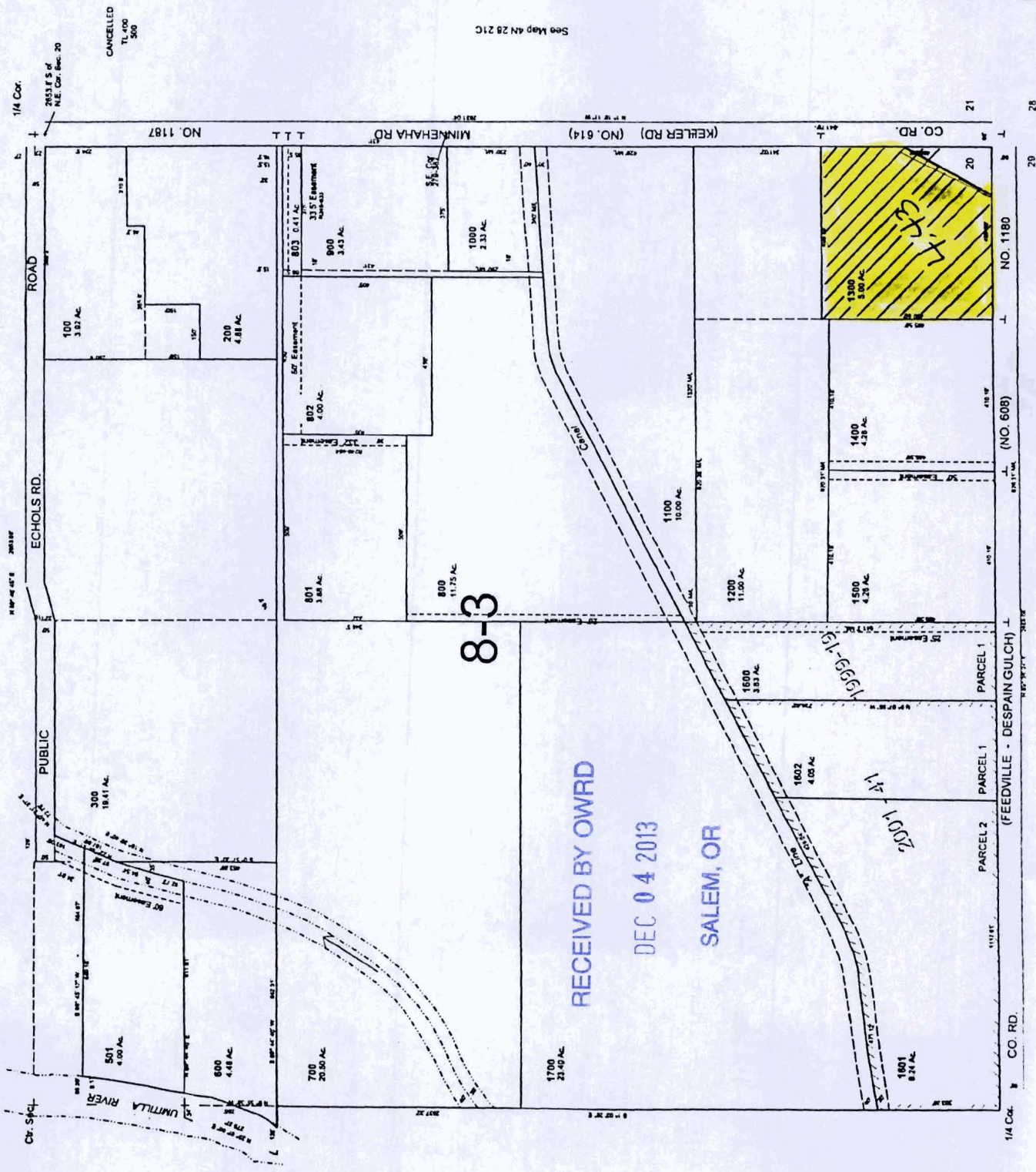
UMATILLA COUNTY

SCALE 1"=200'
HED

TO: 4148800



See Map 4N 28 20A



1011695