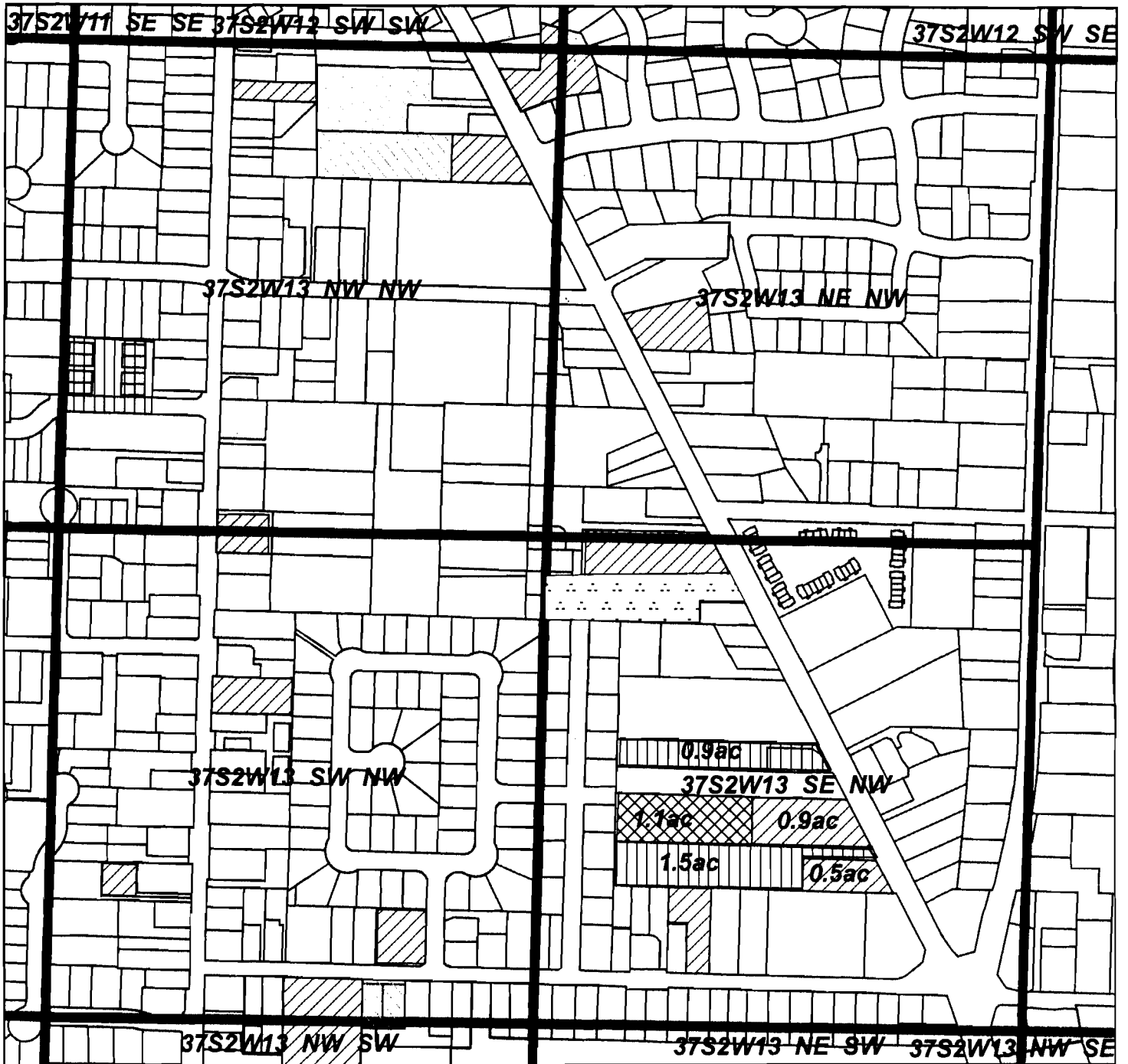


Rogue River Valley Irrigation District Water Rights Transfer Map



Located in SE 1/4 NW 1/4 SEC 13 T.37S. R.2 W.W.M.

Tax Lot T37S R2W 13BD 3300 -1.1 ac

RECEIVED BY OWRD

DEC 23 2013

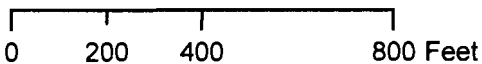
SALEM, OR

From: RRVID

Certificates

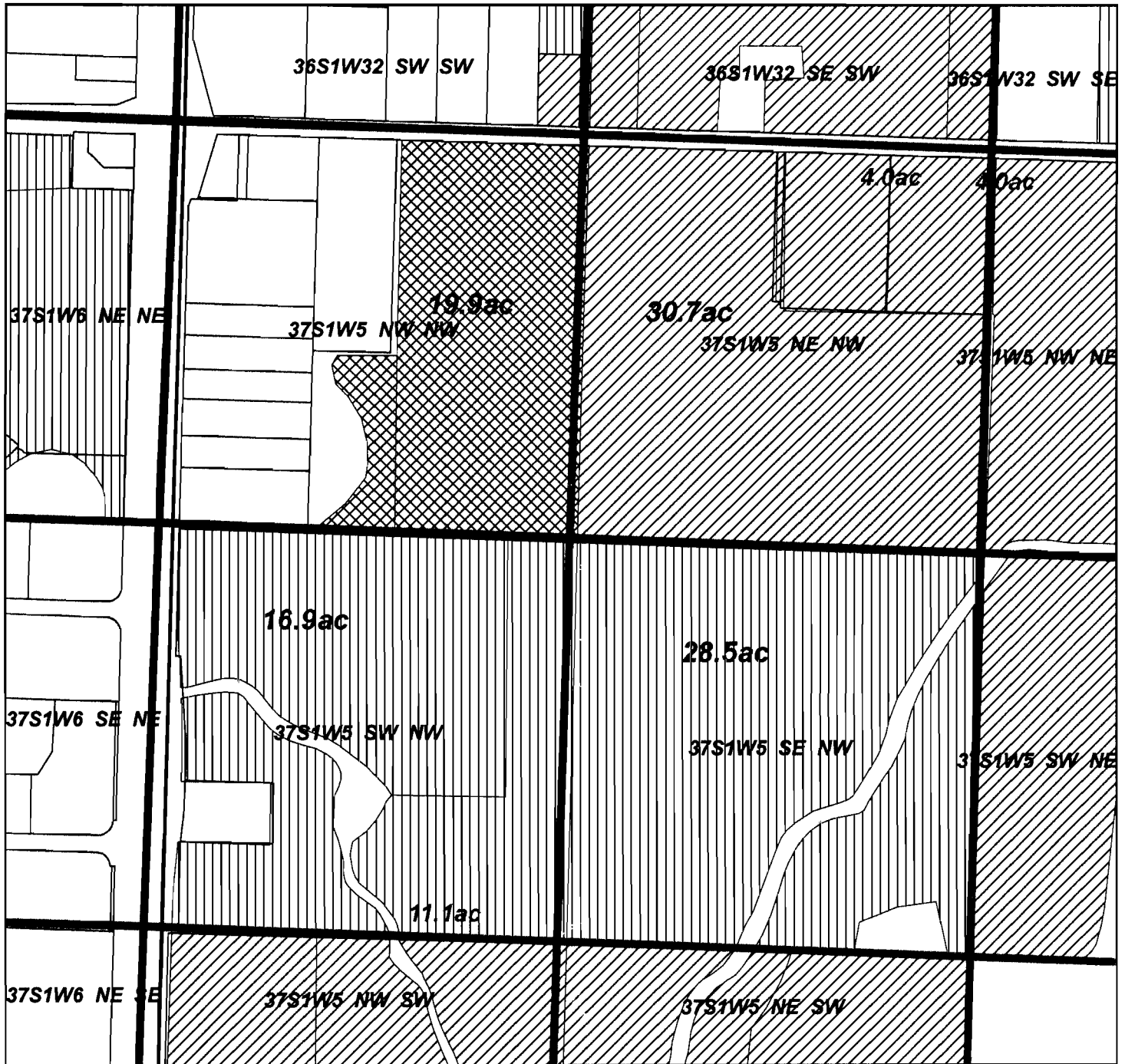
- P85288
- S80575
- S80576
- S85876
- S85877
- S83729
- Permit #4951

- Current Transfer Off
- Remaining
- Lease 2009
- Non-Use
- Quit Claim
- Transfer Off
- Section Line
- Taxlots



1011909

Rogue River Valley Irrigation District Water Rights Transfer Map



Located in NE 1/4 SE 1/4 SEC 09 T.37S. R.2 W.W.M.

Tax Lot T37S R1W 05 300 -19.9 ac

From: RRVID

19.9 AC

RECEIVED BY OWRD

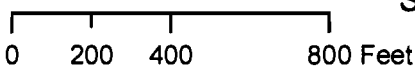
Certificates

- P85714
- S85288
- S80576
- S85876
- S85877

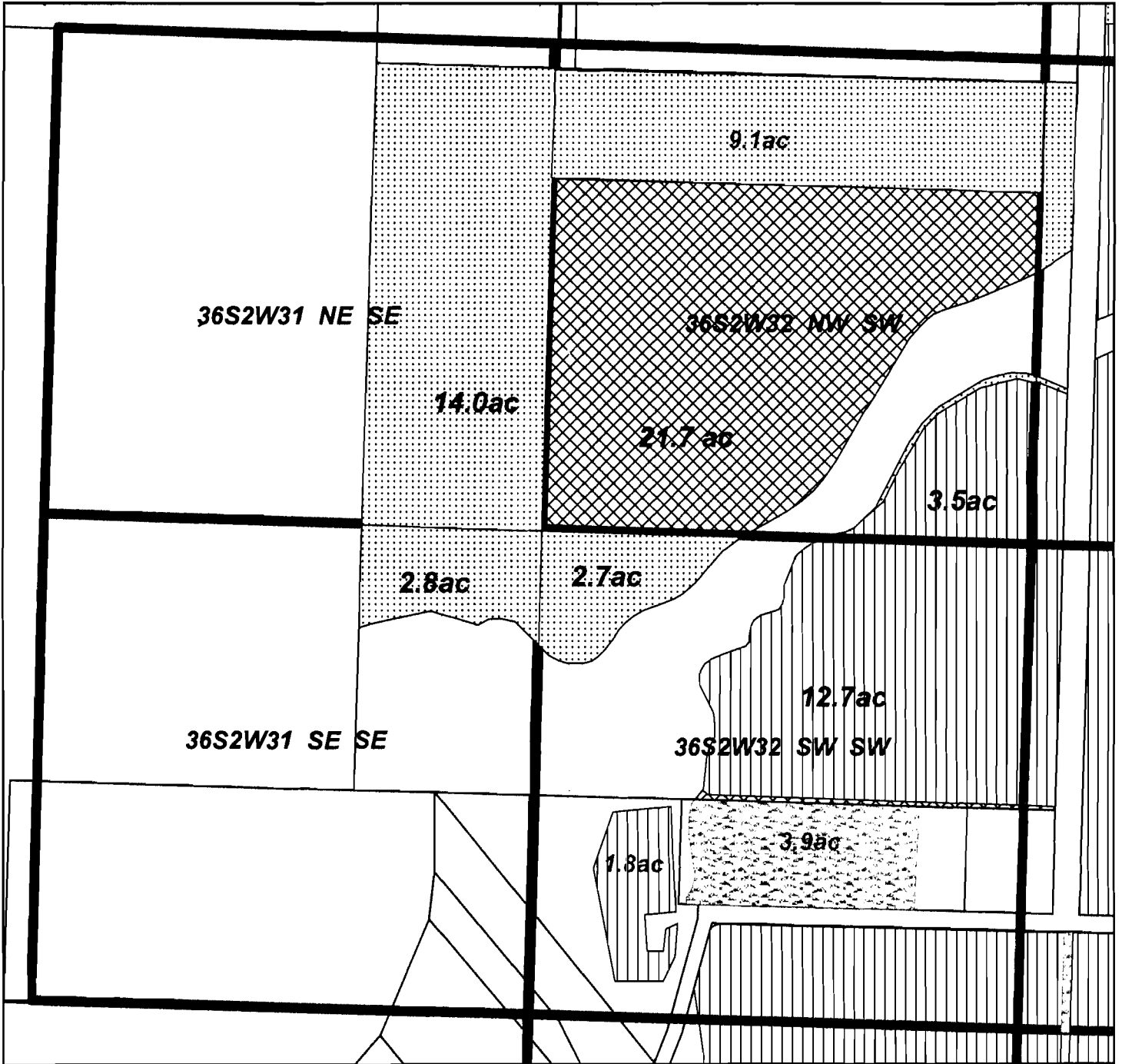
DEC 23 2013

SALEM, OR

- Transfer Off
- Remaining Water
- Prior Transfer
- Section Line
- Tax Lot Line



Rogue River Valley Irrigation District Water Rights Transfer Map



Located in NW 1/4 SW 1/4 SEC 32 T.36S R.2 W.W.M.

Tax Lot T36S R2W 32 1500 -21.7 ac

21.7 AC

RECEIVED BY OWRD

DEC 23 2013

SALEM, OR

From: RRVID

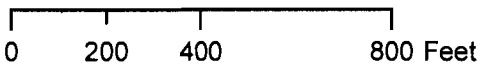
Certificates

- P85288
- S80575
- S80576
- S80577
- S85876
- S85877
- S83729

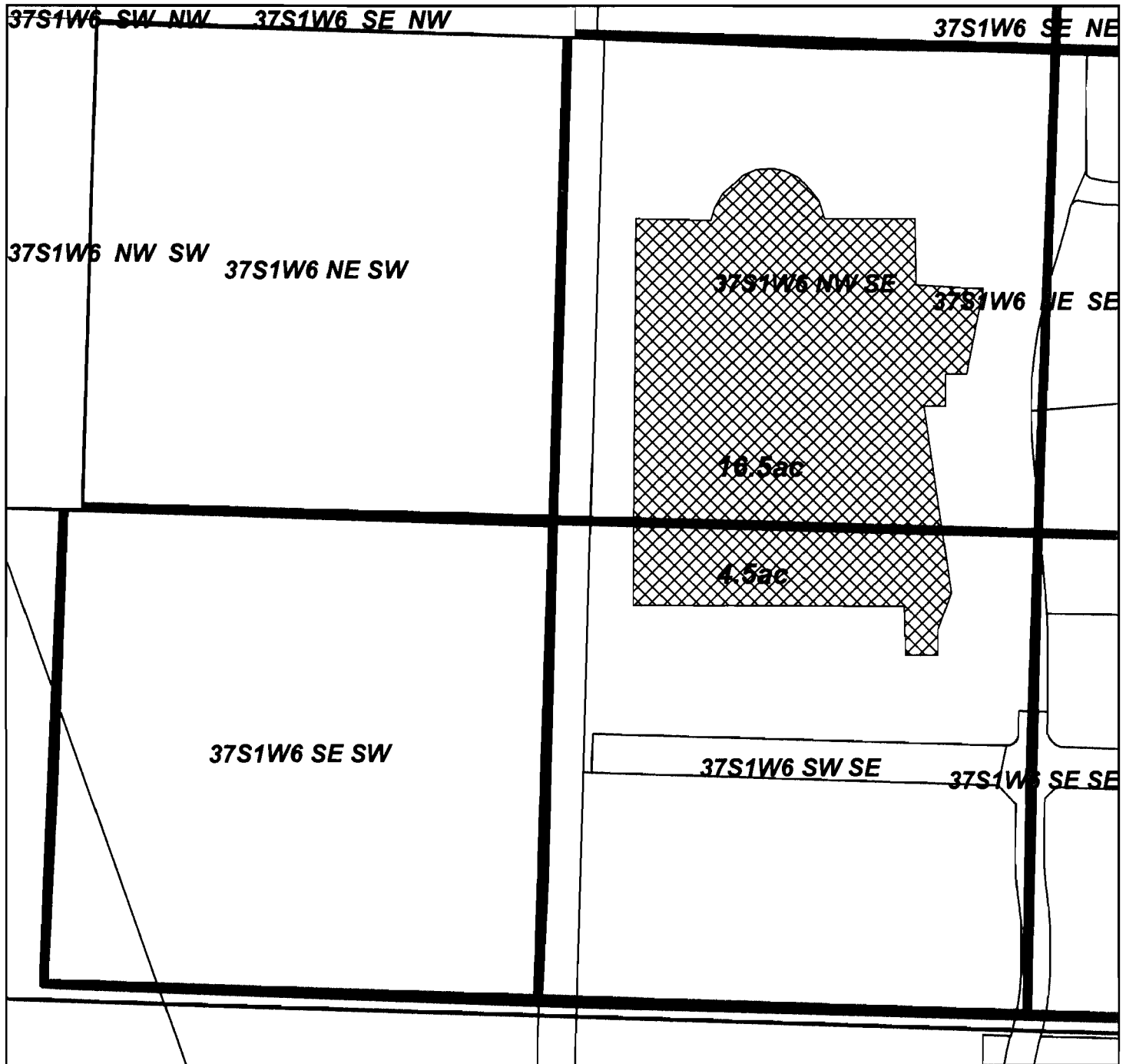
RRVID #13-02

- Transfer Off
- Current Water Right
- Lease
- Quit Claim
- Section Line
- Tax Lot Line

1011702



Rogue River Valley Irrigation District Water Rights Transfer Map



Located in NW 1/4 SE 1/4 SEC 06 T.37S R.1 W.W.M.

Tax Lot T37S R1W 06 2700 -16.5 ac

Located in SW 1/4 SE 1/4 SEC 06 T.37S R.1 W.W.M

Tax Lot T37S R1W 06 2700 -4.5 ac

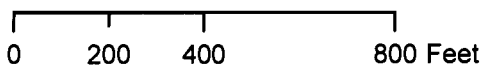
RECEIVED BY OWRD

DEC 23 2013

To: Lithia Real Estate Inc.

Certificates
 P85288
 S80575
 S80576
 P85714
 S85876
 S85877
 S83729
 Permit #4951
 RRVID #13-01

SALEM, OR



Printed October 2013

1011702

- Transfer On
- Section Line
- Tax Lot Line

Rogue River Valley Irrigation District Water Rights Transfer Map



Located in NW 1/4 NW 1/4 SEC 25B T.36S R.2 W.W.M.

Tax Lot T36S R2W 25B 201 -21.7 ac

21.7 AC

RECEIVED BY OWR **To: Carlos Villa Serrano and Alma M Mendez**

DEC 23 2013

SALEM, OR

Certificates
 P85288
 S80575
 S80576
 S80577
 S85876
 S85877
 S83729
 RRVID #13-02

1011702

- Transfer On
- Time Limited Transfer
- Existing Water Right
- Section Line
- Tax Lot Line

