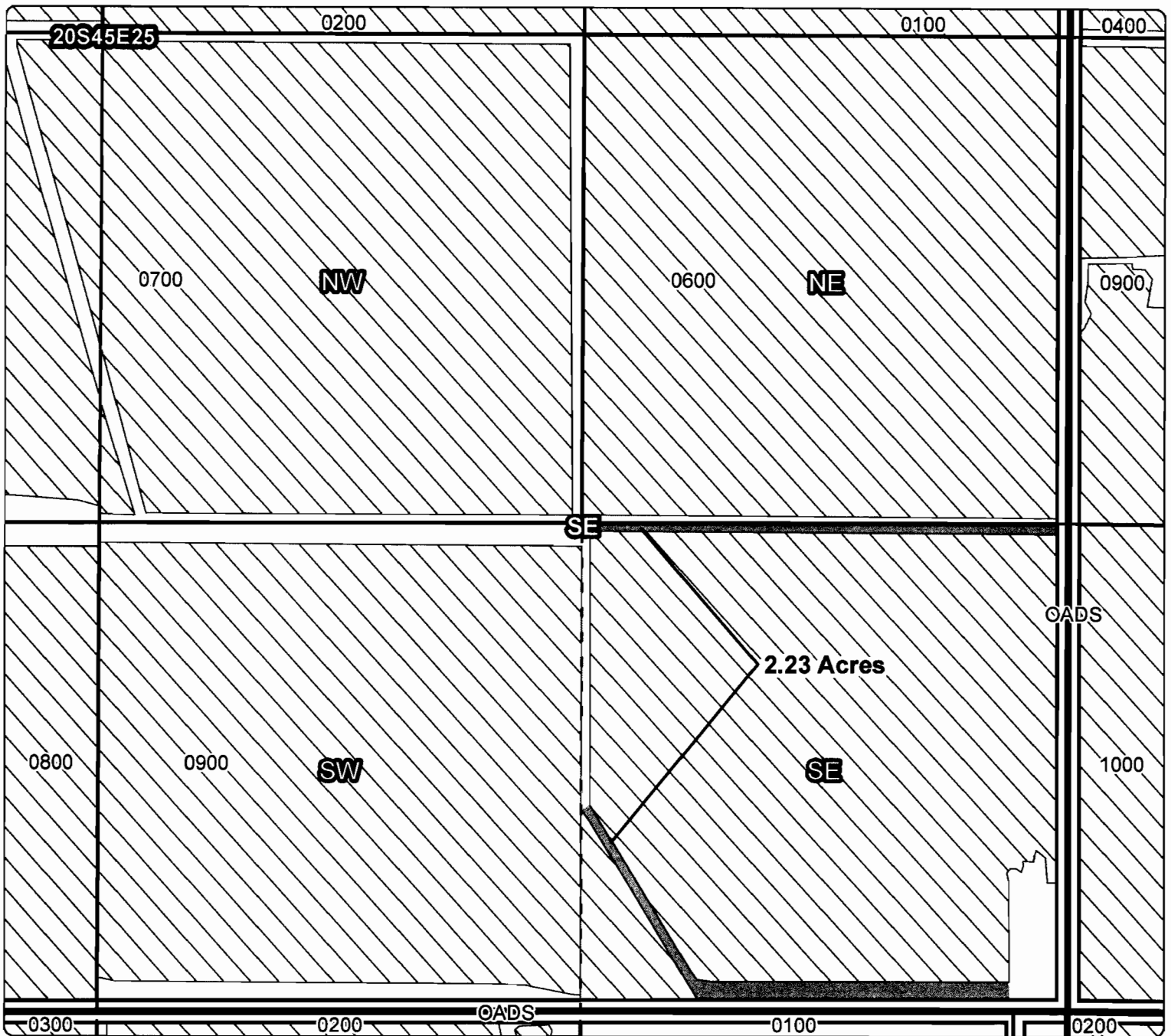
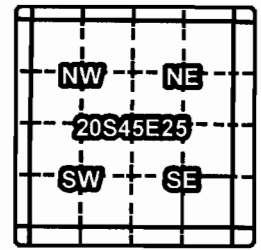


Owyhee Irrigation District

Application for District Transfer

Cert #: 75691

For: BARLOW FARMS



ON MAP

Taxlot 900, 20S45E25SESE: 2.23 Acres ON, 34.93 Acres Total

RECEIVED BY OWRD

- Point of Diversion
- ▬ Canals
- ▭ Taxlots
- ▨ Transfer
- ▭ Cert 75691

JAN 09 2014

SALEM, OR

1 inch = 400 feet
December 2013

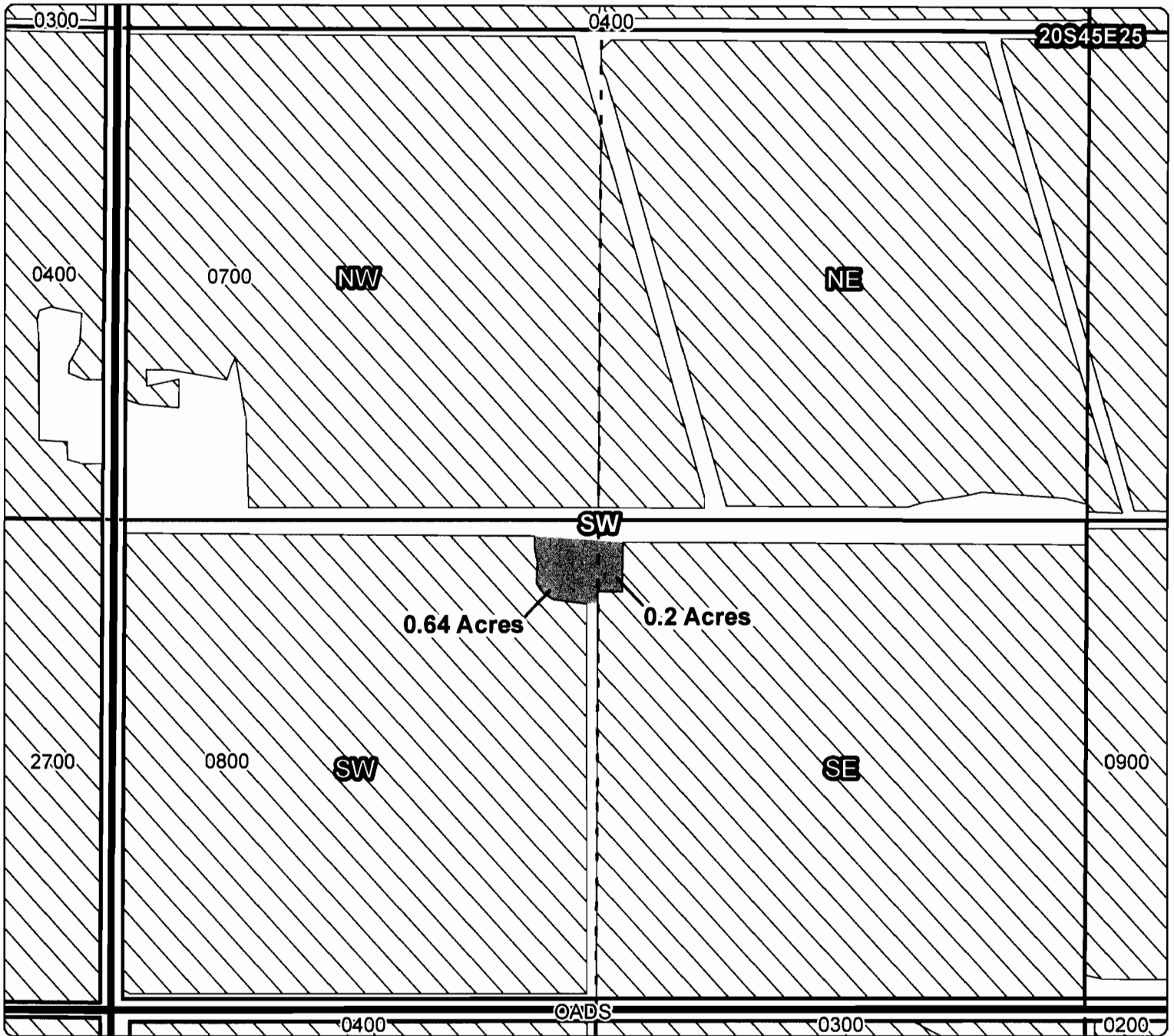
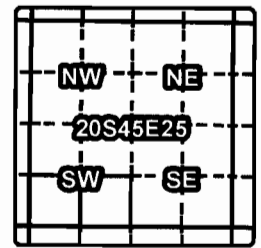


Owyhee Irrigation District

Application for District Transfer

Cert #: 75691

For: BARLOW FARMS



ON MAP

Taxlot 800, 20S45E25SWSW: 0.64 Acres ON, 35.42 Acres Total

Taxlot 800, 20S45E25SESW: 0.2 Acres ON, 35.88 Acres Total

- Point of Diversion
- Canals
- Taxlots
- Transfer
- Cert 75691

RECEIVED BY OWRD

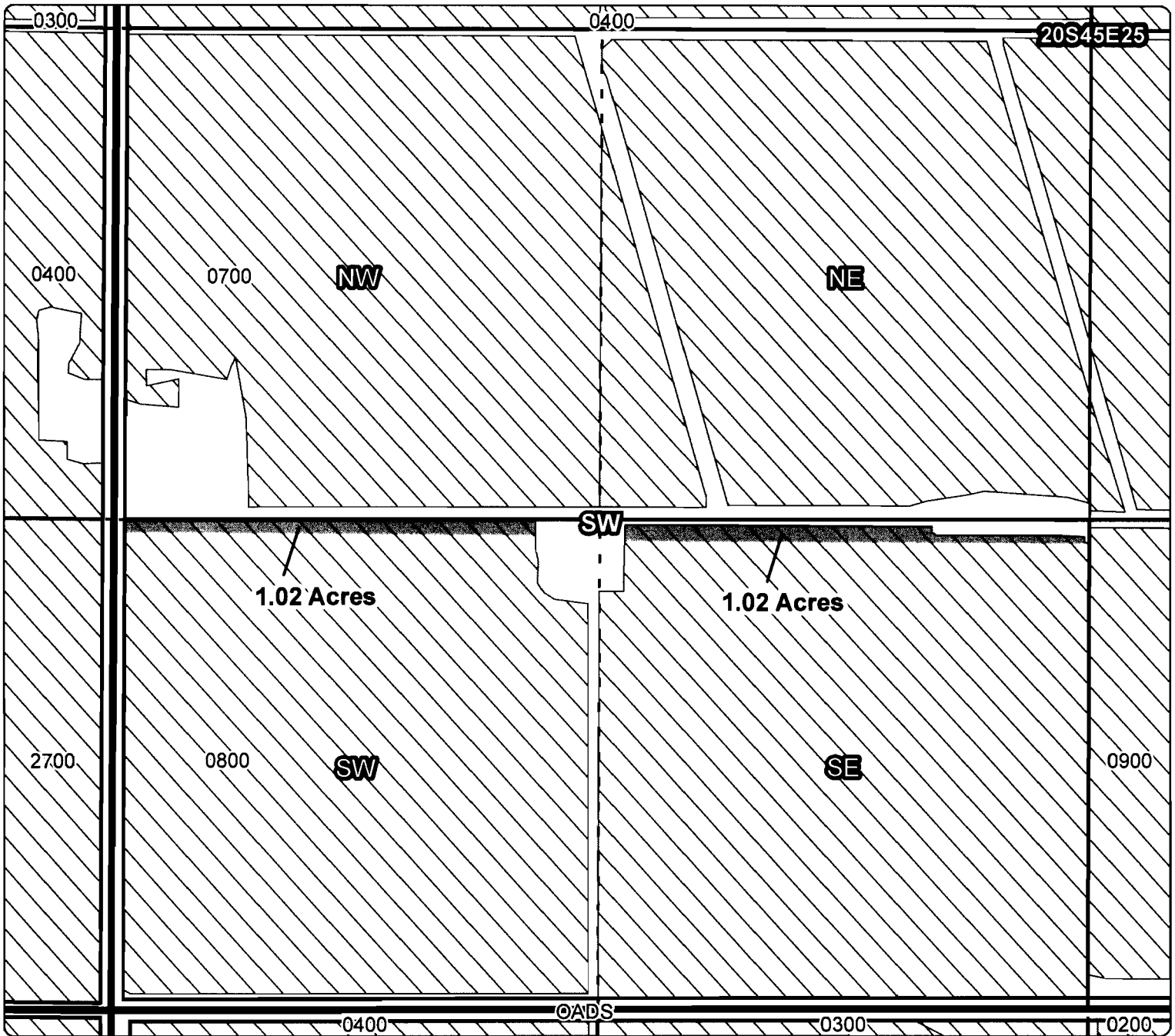
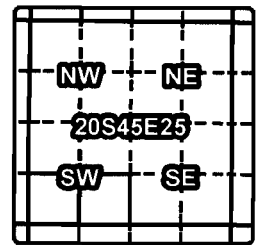


Owyhee Irrigation District

Application for District Transfer

Cert #: 75691

For: BARLOW FARMS



OFF MAP

Taxlot 800, 20S45E25SWSW: 1.02 Acres OFF, 34.78 Acres Remaining

Taxlot 800, 20S45E25SESW: 1.02 Acres OFF, 35.68 Acres Remaining

RECEIVED BY OWRD

- Point of Diversion
- Canals
- Taxlots
- Transfer
- Cert 75691

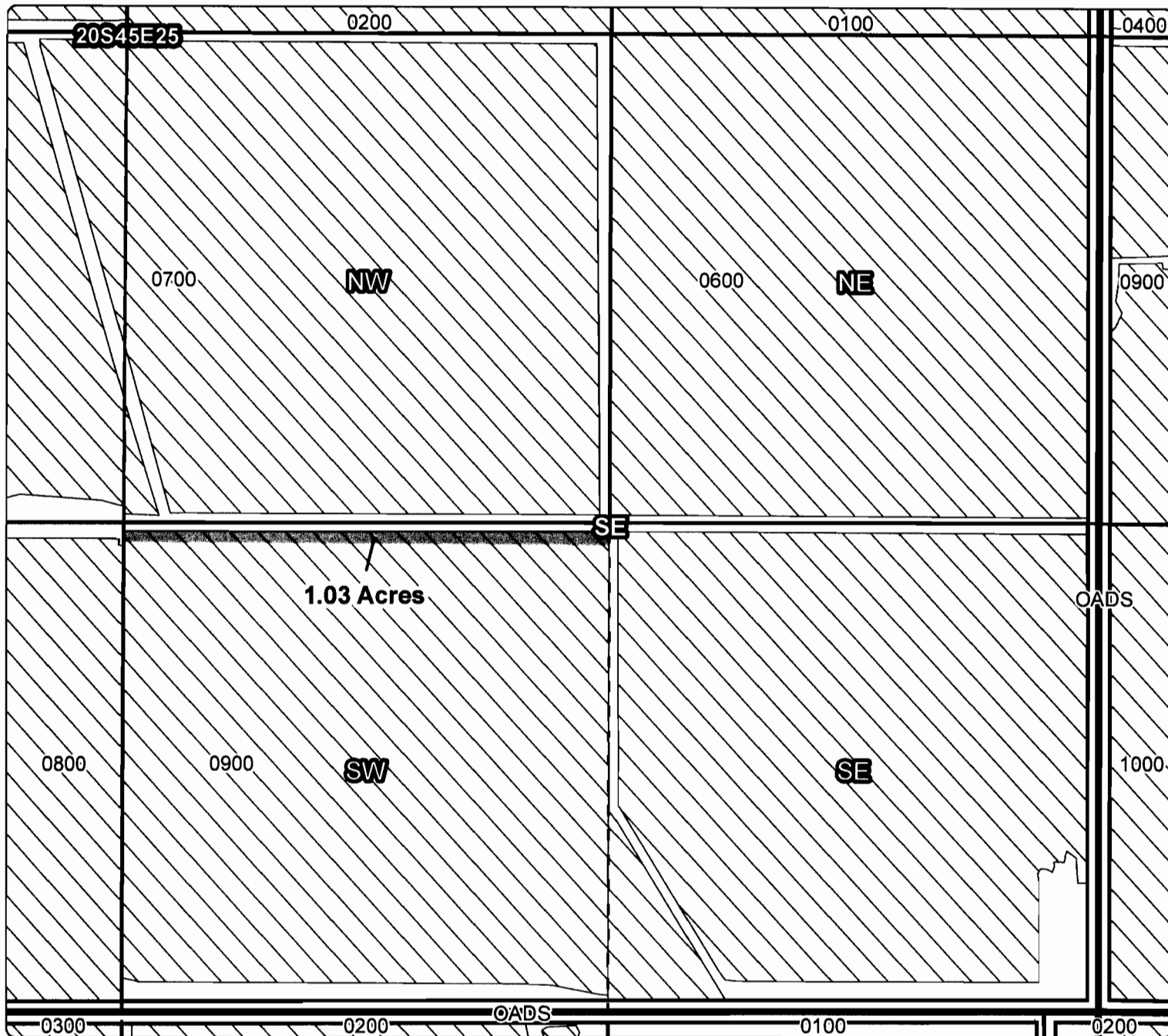
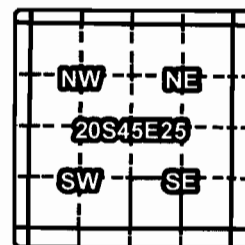


Owyhee Irrigation District

Application for District Transfer

Cert #: 75691

For: BARLOW FARMS

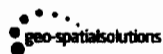


OFF MAP

Taxlot 900, 20S45E25SWSE: 1.03 Acres OFF, 35.57 Acres Remaining

RECEIVED BY OWRD

- Point of Diversion
- ▬ Canals
- ▭ Taxlots
- ▨ Transfer
- ▭ Cert 75691



JAN 09 2014

1 inch = 400 feet
December 2013



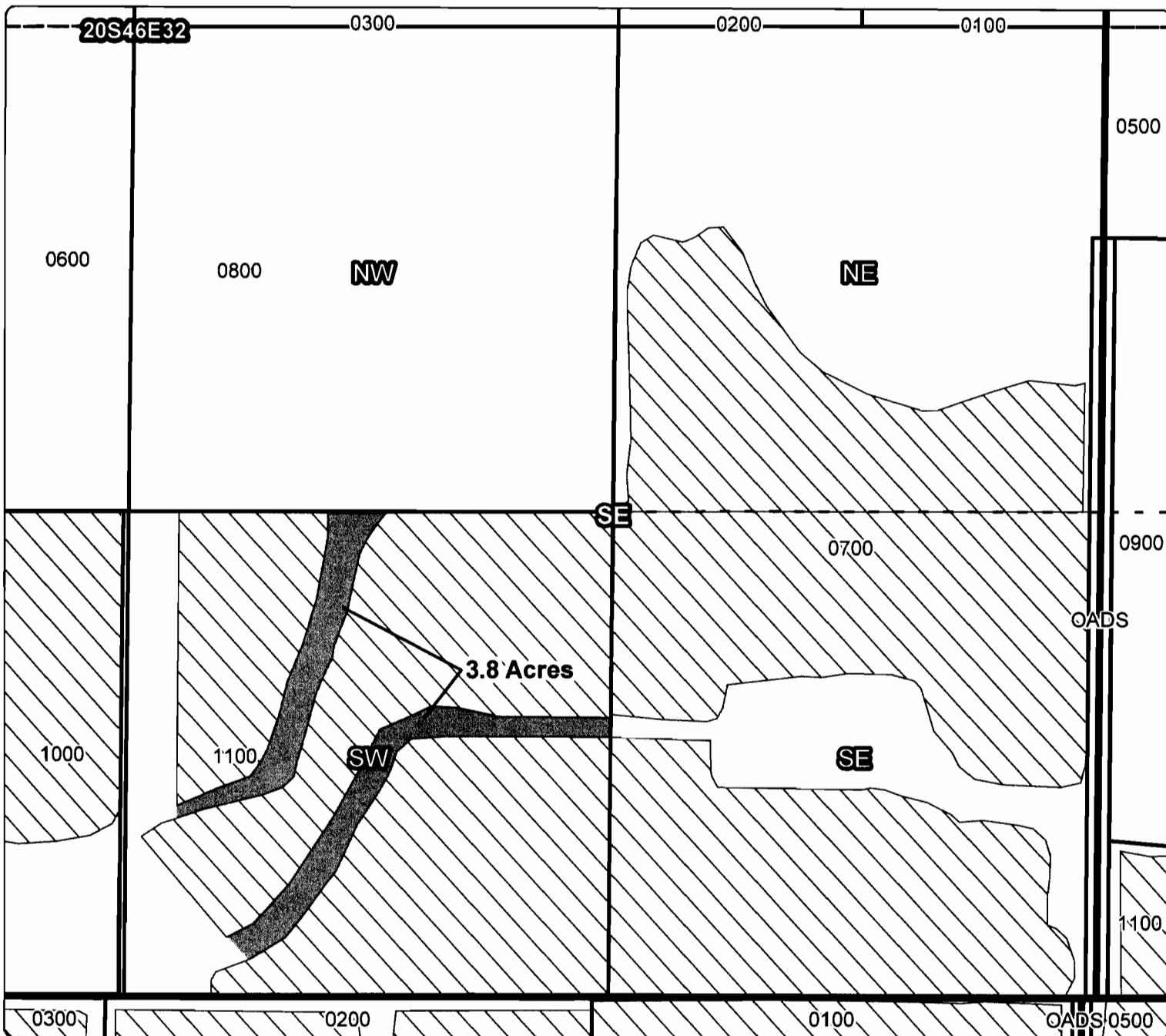
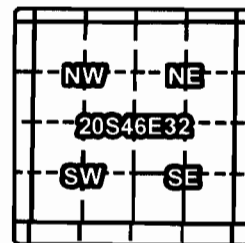
SALEM, OR

Owyhee Irrigation District

Application for District Transfer

Cert #: 75691

For: NORMAN BENNETT

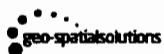


ON MAP

Taxlot 1100, 20S46E32SWSE: 3.8 Acres ON, 34.7 Acres Total

RECEIVED BY OWRD

- Point of Diversion
- ▬ Canals
- ▭ Taxlots
- Transfer
- ▭ Cert 75691



JAN 09 2014

1 inch = 400 feet
December 2013



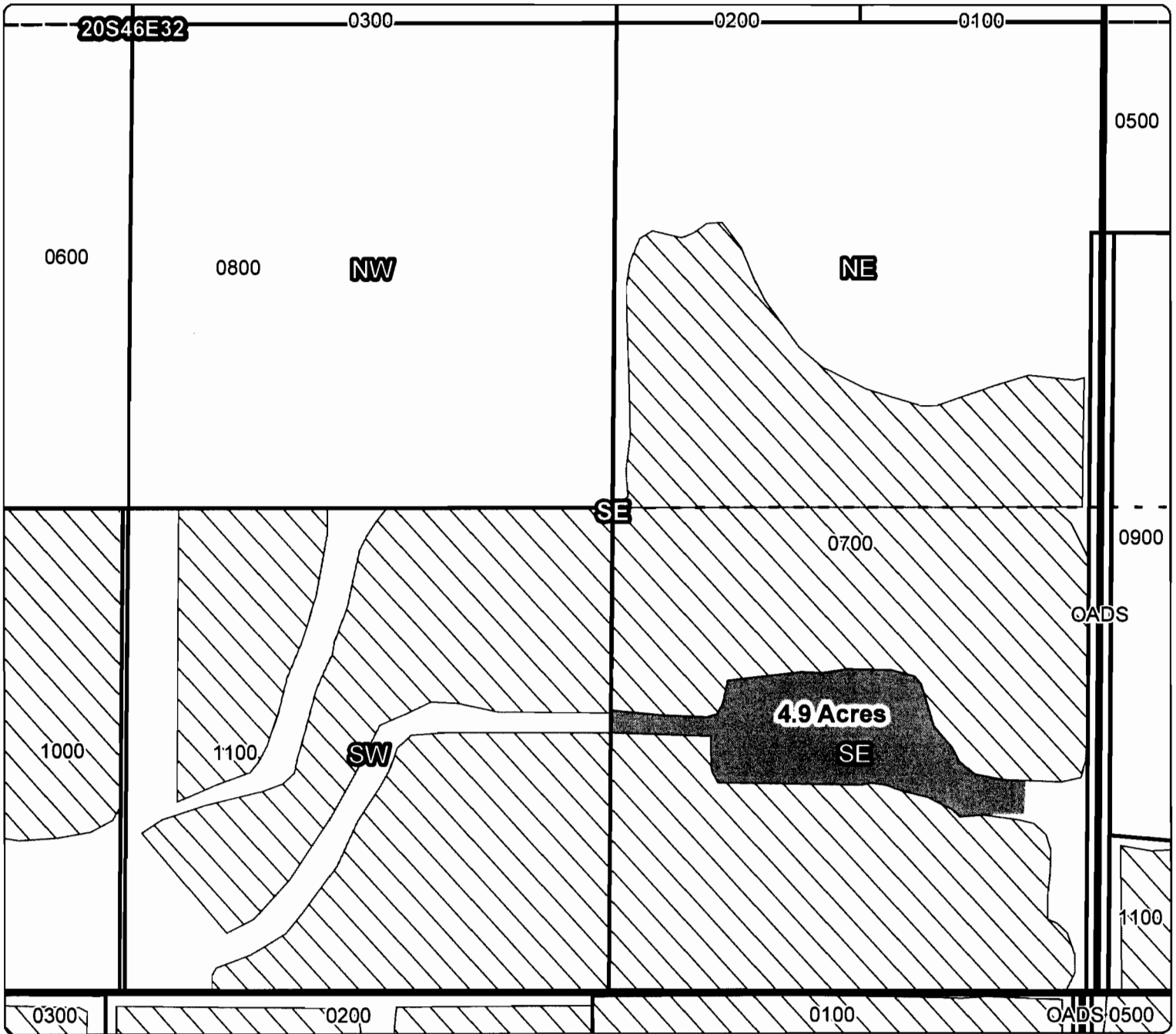
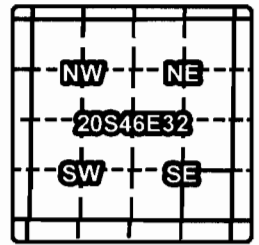
SALEM, OR

Owyhee Irrigation District

Application for District Transfer

Cert #: 75691

For: NORMAN BENNETT







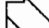
ON MAP

Taxlot 700, 20S46E32SESE: 4.9 Acres ON, 37.0 Acres Total

RECEIVED BY OWRD

JAN 09 2014

SALEM, OR

-  Point of Diversion
-  Canals
-  Taxlots
-  Transfer
-  Cert 75691

1 inch = 400 feet
December 2013

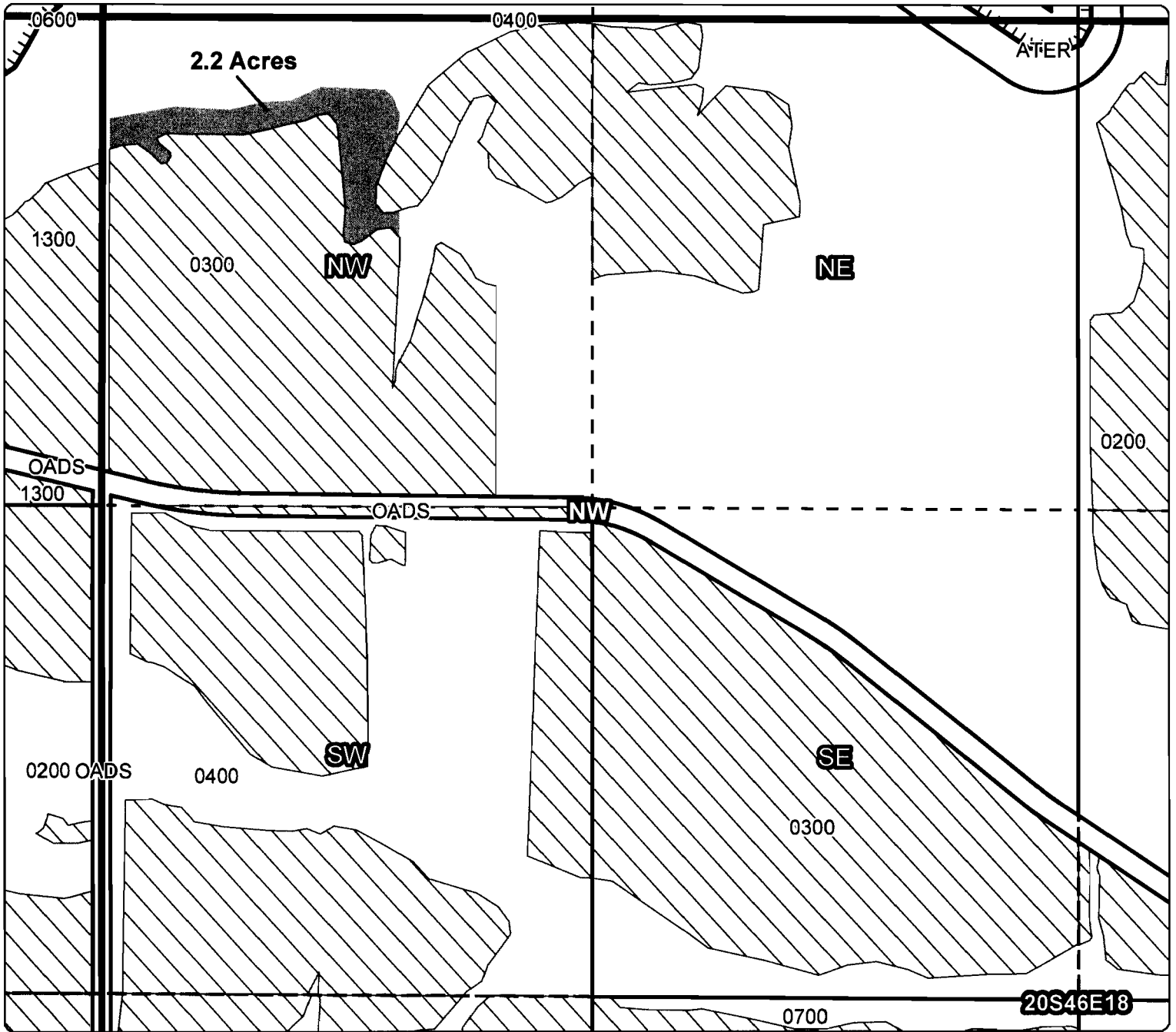
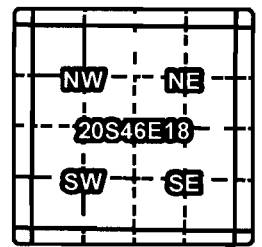


Owyhee Irrigation District

Application for District Transfer

Cert #: 75691

For: NORMAN BENNETT



ON MAP

Taxlot 300, 20S46E18NWNW: 2.2 Acres ON, 27.0 Acres Total

RECEIVED BY OWRD

- Point of Diversion
- ▬ Canals
- ▭ Taxlots
- Transfer
- ▭ Cert 75691



JAN 09 2014

1 inch = 400 feet
December 2013



SALEM, OR

Owyhee Irrigation District

Application for District Transfer

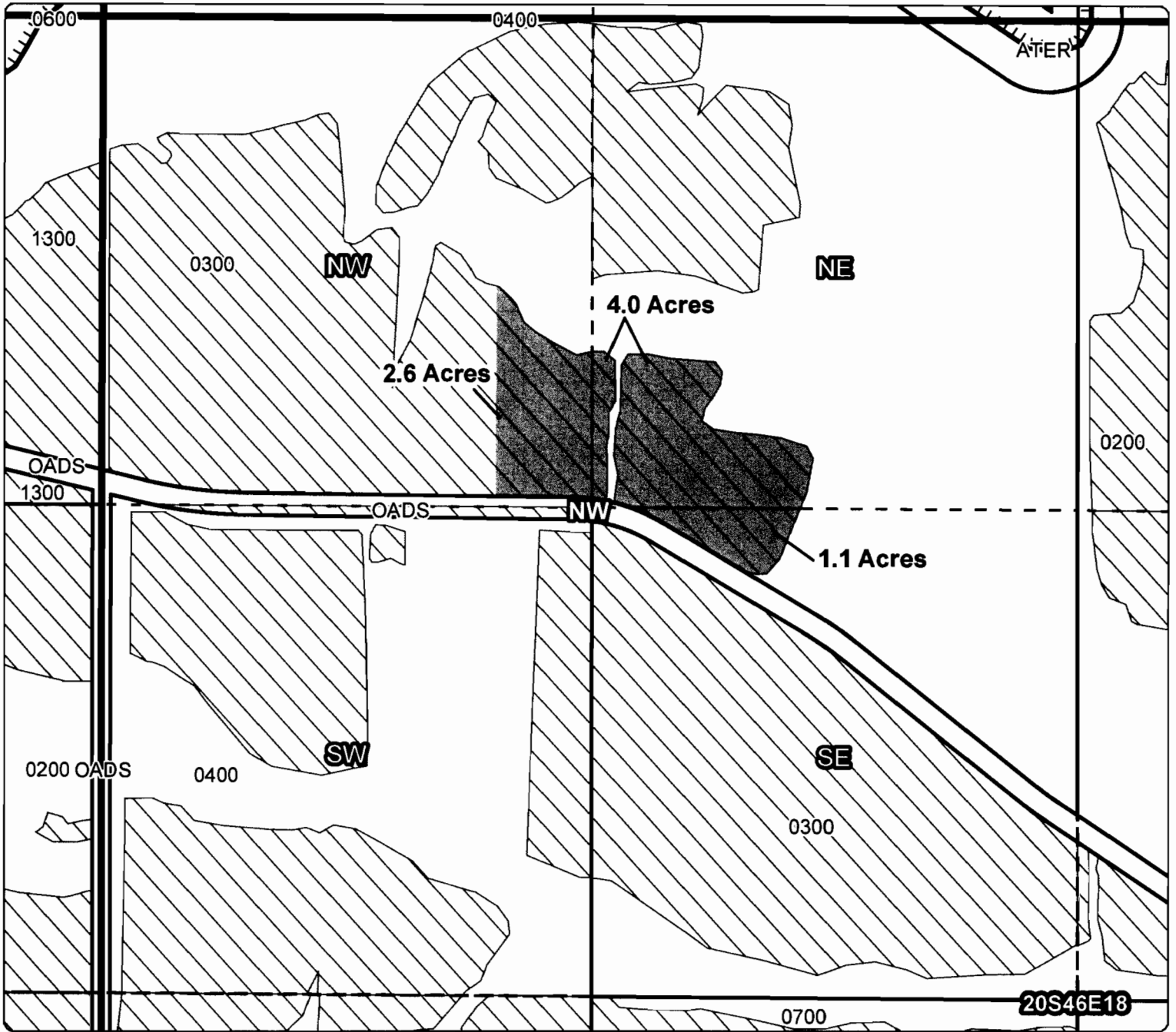
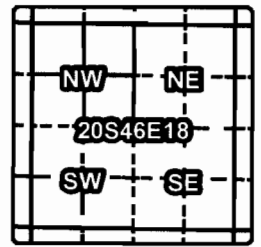
Cert #: 75691

For: NORMAN BENNETT

RECEIVED BY OWRD

JAN 09 2014

SALEM, OR



OFF MAP

- Taxlot 300, 20S46E18NWNW: 2.6 Acres OFF, 24.8 Acres Remaining
- Taxlot 300, 20S46E18NENW: 4.0 Acres OFF, 6.1 Acres Remaining
- Taxlot 300, 20S46E18SENW: 1.1 Acres OFF, 23.2 Acres Remaining

- Point of Diversion
- ▬ Canals
- ▭ Taxlots
- Transfer
- ▨ Cert 75691

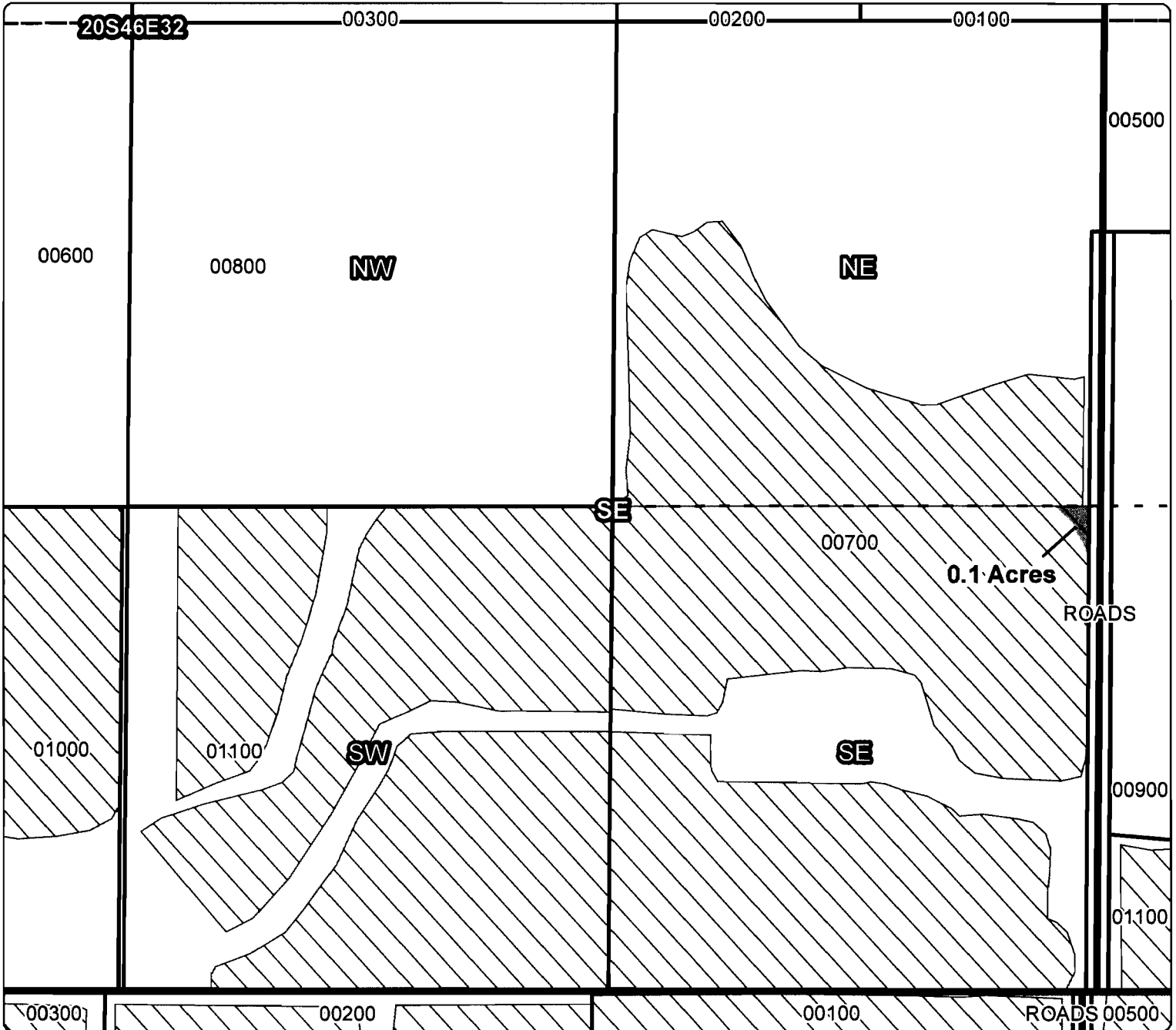
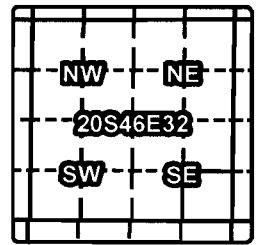


Owyhee Irrigation District

Application for District Transfer

Cert #: 75691






For: NORMAN BENNETT



OFF MAP

Taxlot 700, 20S46E32SESE: 0.1 Acres OFF, 32.0 Acres Remaining

RECEIVED BY OWRD

-  Point of Diversion
-  Canals
-  Taxlots
-  Transfer
-  Cert 75691

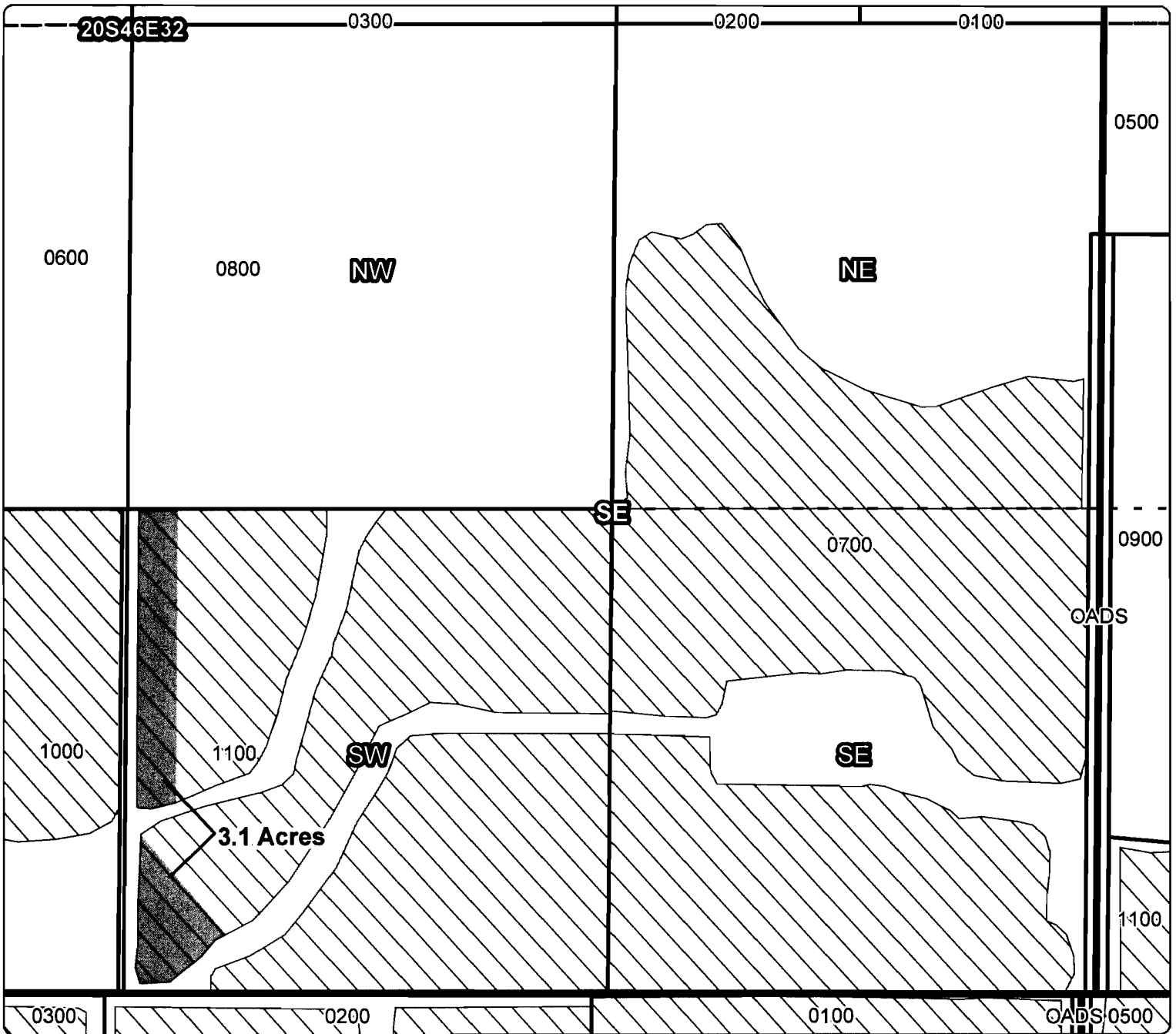
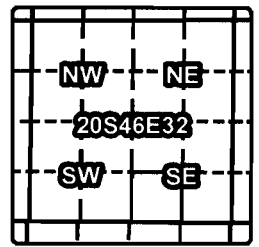


Owyhee Irrigation District

Application for District Transfer

Cert #: 75691

For: NORMAN BENNETT








OFF MAP

Taxlot 1100, 20S46E32SWSE: 3.1 Acres OFF, 30.9 Acres Remaining

RECEIVED BY OWRD

JAN 09 2014

SALEM, OR

-  Point of Diversion
-  Canals
-  Taxlots
-  Transfer
-  Cert 75691

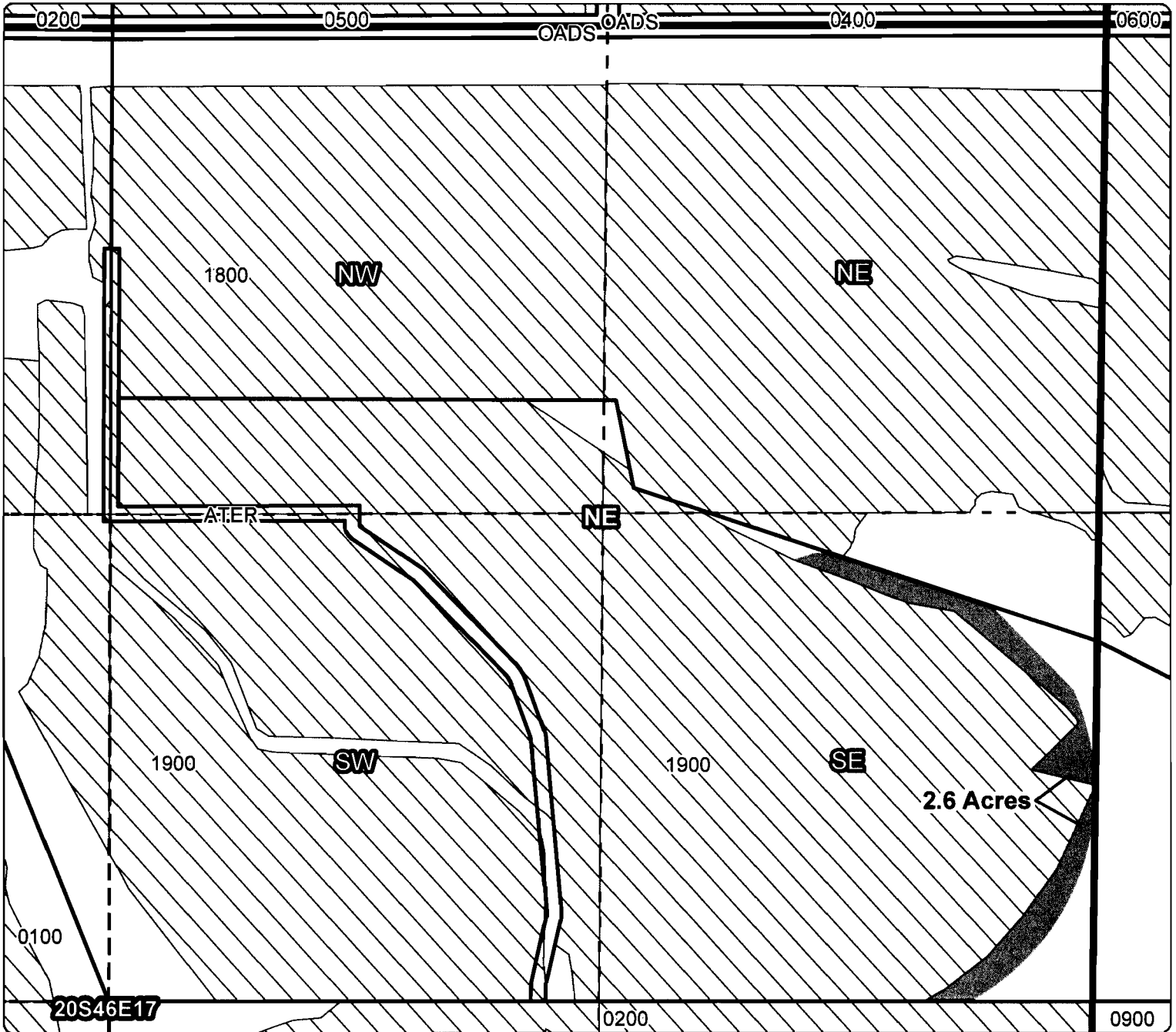
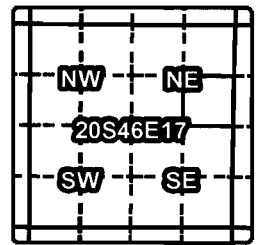


Owyhee Irrigation District

Application for District Transfer

Cert #: 75691






For: GRANT 4-D FARMS



ON MAP

Taxlot 1900, 20S46E17SENE: 2.6 Acres ON, 34.06 Acres Total

RECEIVED BY OWRD

-  Point of Diversion
-  Canals
-  Taxlots
-  Transfer
-  Cert 75691

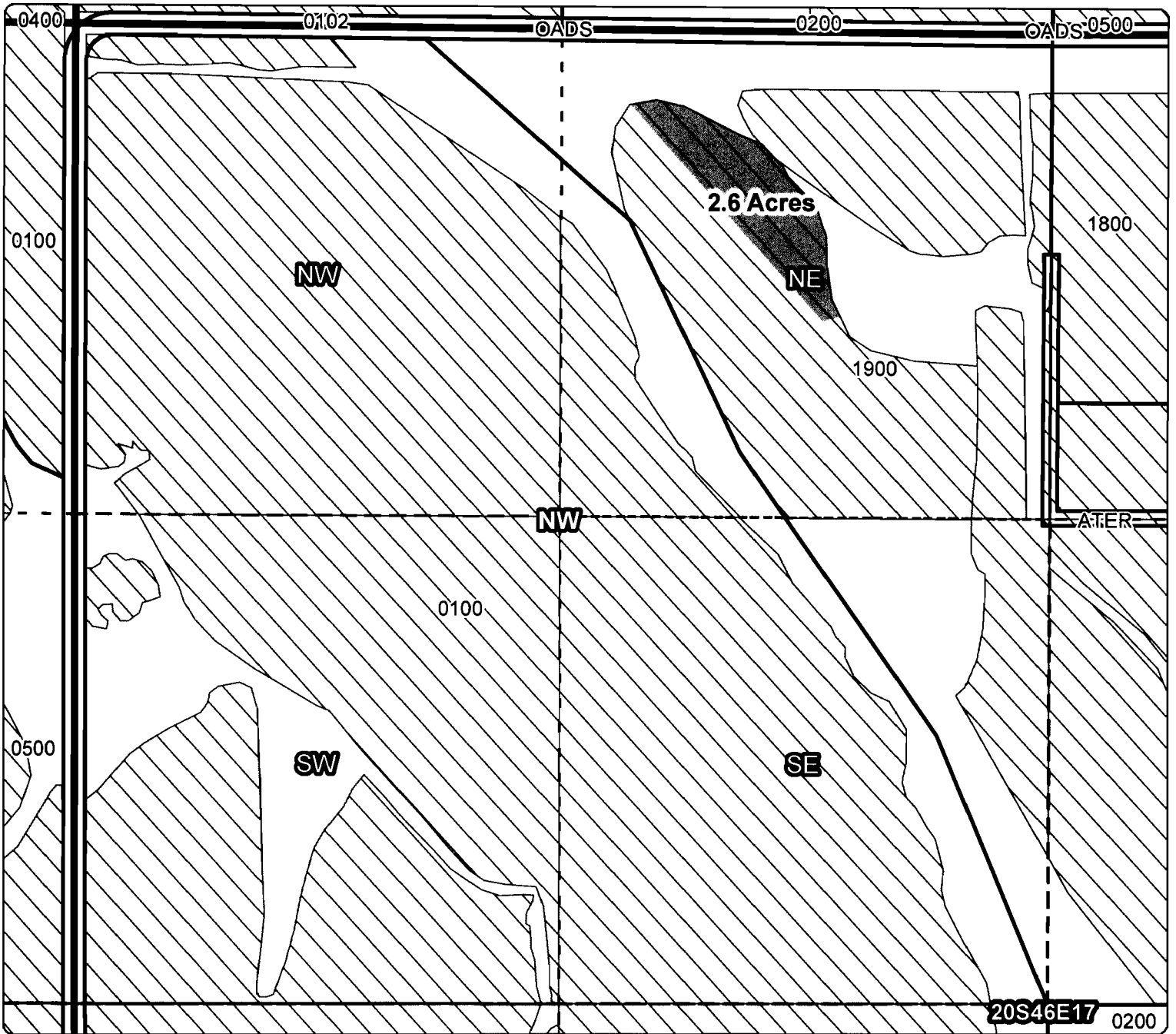
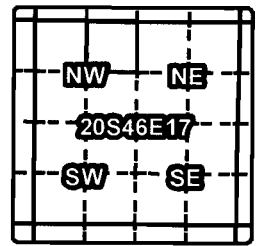


Owyhee Irrigation District

Application for District Transfer

Cert #: 75691

For: PEGGY BROWN



OFF MAP

Taxlot 1900, 20S46E17NENW: 2.6 Acres OFF, 18.44 Acres Remaining

RECEIVED BY OWRD

JAN 09 2014

1 inch = 400 feet
 December 2013

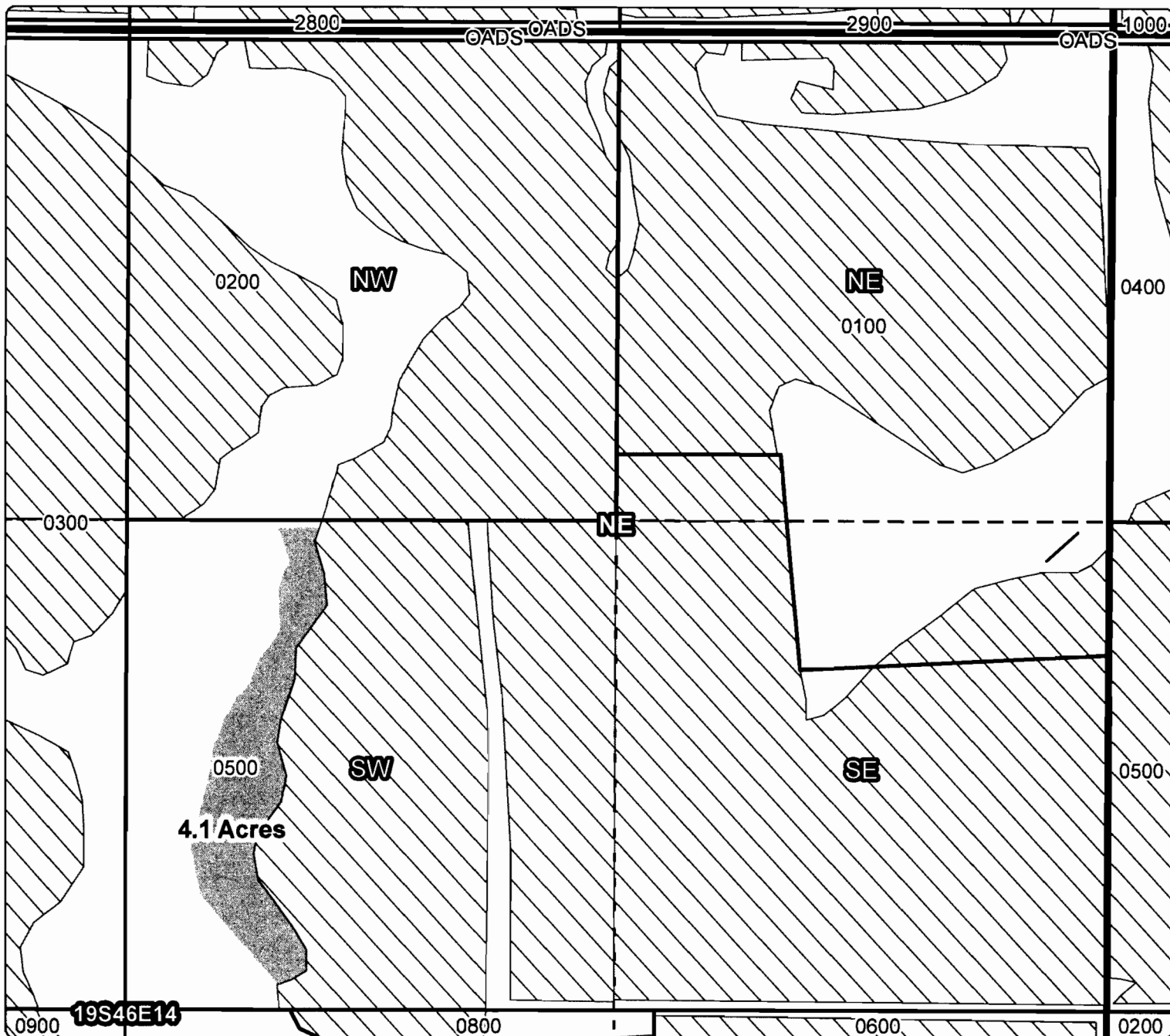
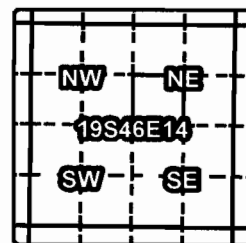


Owyhee Irrigation District

Application for District Transfer

Cert #: 75691

For: SCOTT & BRENDA KESLER



ON MAP

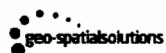
Taxlot 500, 19S46E14SWNE: 4.1 Acres ON, 28.5 Acres Total

- Point of Diversion
- ▬ Canals
- ▭ Taxlots
- ▨ Transfer
- ▭ Cert 75691

RECEIVED BY OWRD

JAN 09 2014

1 inch = 400 feet
December 2013



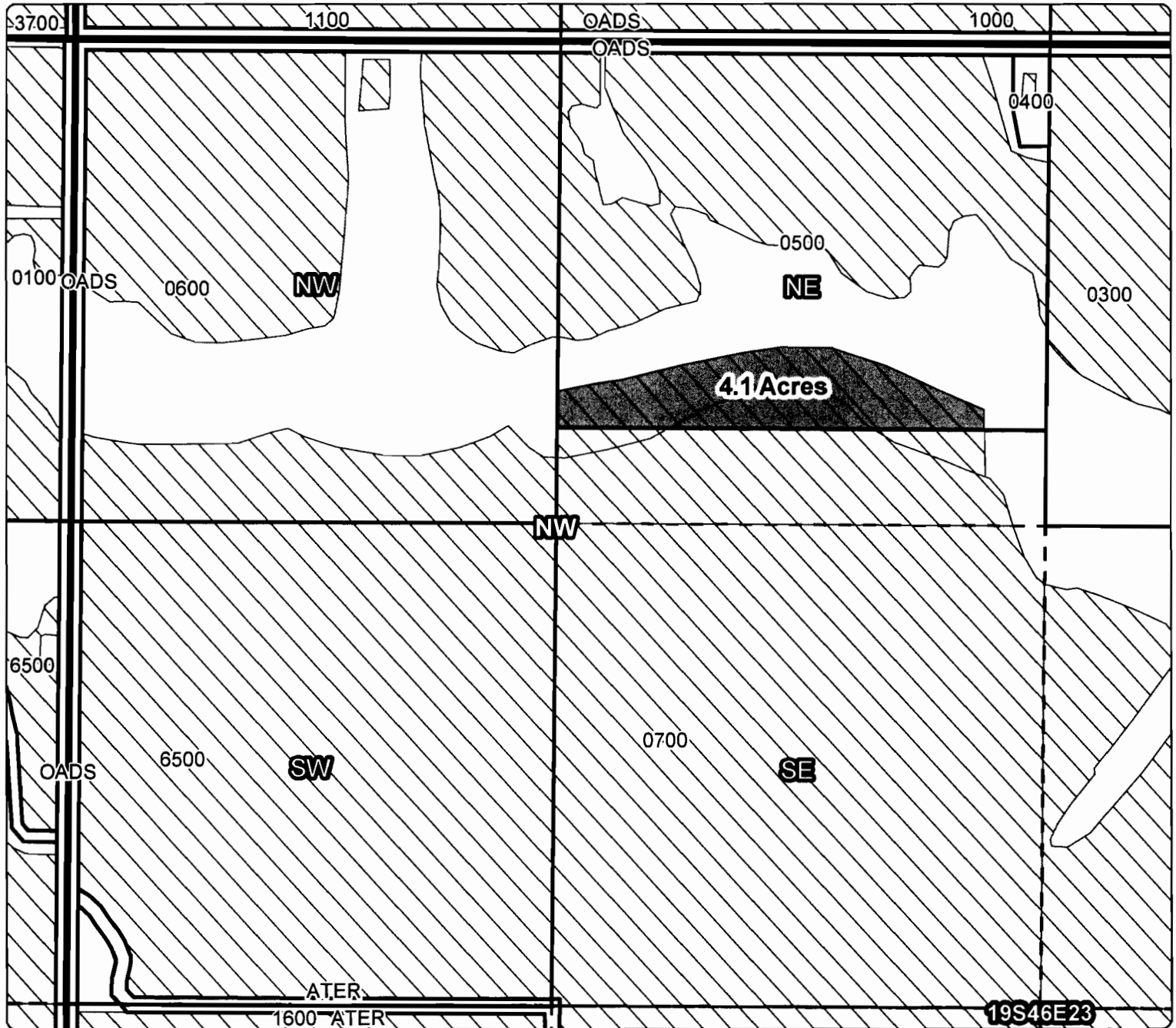
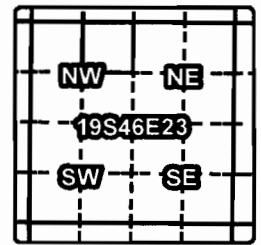
SALEM, OR

Owyhee Irrigation District

Application for District Transfer

Cert #: 75691

For: SCOTT & PAUL KESLER

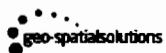


OFF MAP

Taxlot 500, 19S46E23NENW: 4.1 Acres OFF, 24.3 Acres Remaining

RECEIVED BY OWRPD

- Point of Diversion
- Canals
- Taxlots
- Transfer
- Cert 75691



JAN 09 2014

SALEM, OR

1 inch = 400 feet
December 2013

