

**FINAL PROOF SURVEY**  
 AND  
**CLAIM OF BENEFICIAL USE**  
**CHANGE IN POINT OF APPROPRIATION**

LOCATED WITHIN  
 SW 1/4, NE 1/4, AND SE 1/4, NE 1/4 S29, T.5N., R.29E., W.M  
 UMATILLA COUNTY, OREGON

APPLICANTS: JIMMY A. AND PAULINE E. BIER

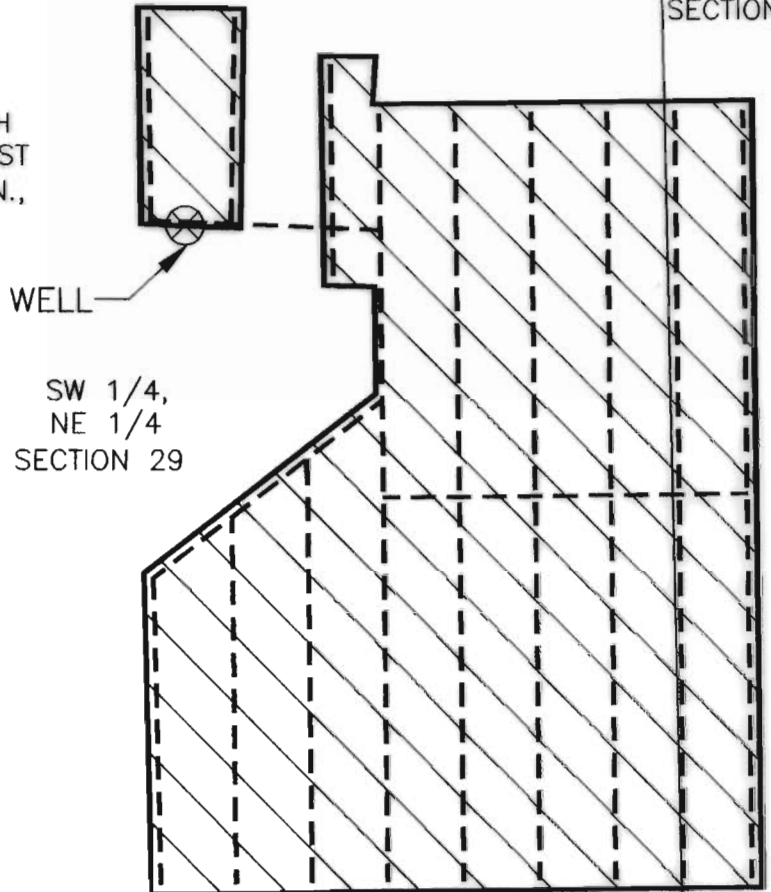
TRANSFER 8332

SPECIAL ORDER VOLUME 54, PAGE 77

NE 1/16  
S29

SE 1/4,  
NE 1/4  
SECTION 29

CORNER TIE:  
 WELL IS LOCATED 635 FEET NORTH  
 AND 1,605 FEET WEST OF THE EAST  
 1/4 CORNER OF SECTION 29, T.5N.,  
 R.29E.




WELL

SW 1/4,  
NE 1/4  
SECTION 29

THIS MAP IS PREPARED  
 FOR THE EXPRESS  
 PURPOSE TO SHOW WATER  
 APPROPRIATION AND USE.  
 IT IS NOT INTENDED TO  
 SHOW OR LOCATE  
 PROPERTY OWNERSHIP  
 LINES.

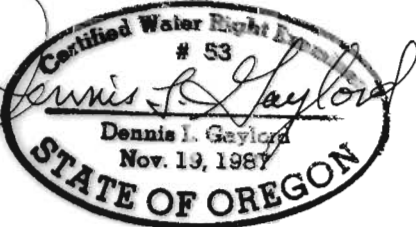
**LEGEND**

- BURIED PVC DISTRIBUTION LINE
-  AREA BENEFICIAALLY IRRIGATED:
- SW 1/4, NE 1/4 = 2.24 ACRES
- SE 1/4, NE 1/4 = 0.46 ACRES
- TOTAL = 2.70 ACRES



C 1/4  
S29

1/4  
S29 | S28  
C-E 1/16  
S29



RENEWS 6/30/2001

DENNIS L. GAYLORD,  
 CWRE  
 71614 S.W. LAKE DRIVE  
 PENDLETON, OR 97801  
 (541)-276-6260 ©  
 JUNE, 2000

Drawn by: Mill Creek Drafting