

**MAP TO ACCOMPANY APPLICATION
TO CHANGE PLACE OF USE FOR
NORTON CATTLE COMPANY, LLC**

TAX LOTS 100, 1800 & 1900
IN SECTIONS 28, 29, 31, & 32 TOWNSHIP 11 SOUTH, RANGE 14 EAST, W.M.
JEFFERSON COUNTY, OREGON

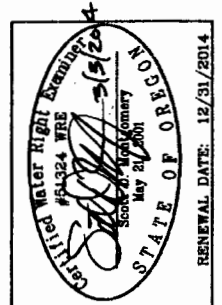
POD WILLOW CREEK "WILLOW CR" (C75751)
LOCATED IN THE SE 1/4 NE 1/4 SECTION 31, T11S R14E, W.M. 1440 FEET SOUTH &
1080 FEET WEST FROM NE CORNER SECTION 31.

- 172.4 AC PRIMARY WATER RIGHTS FROM C75751 (1980), AS SHOWN.
- 415.5 AC SUPPLEMENTAL WATER RIGHTS FROM C75751 (1930), AS SHOWN.

BURIED PIPE
 * 3-1/2" BRASS CAPPED SECTION MONUMENT

THIS MAP IS FOR THE PURPOSE OF LOCATING A WATER RIGHT ONLY AND HAS NO INTENT TO PROVIDE LEGAL DIMENSIONS OR THE LOCATION OF PROPERTY LINES

RECEIVED
APR 07 2014
OWRD

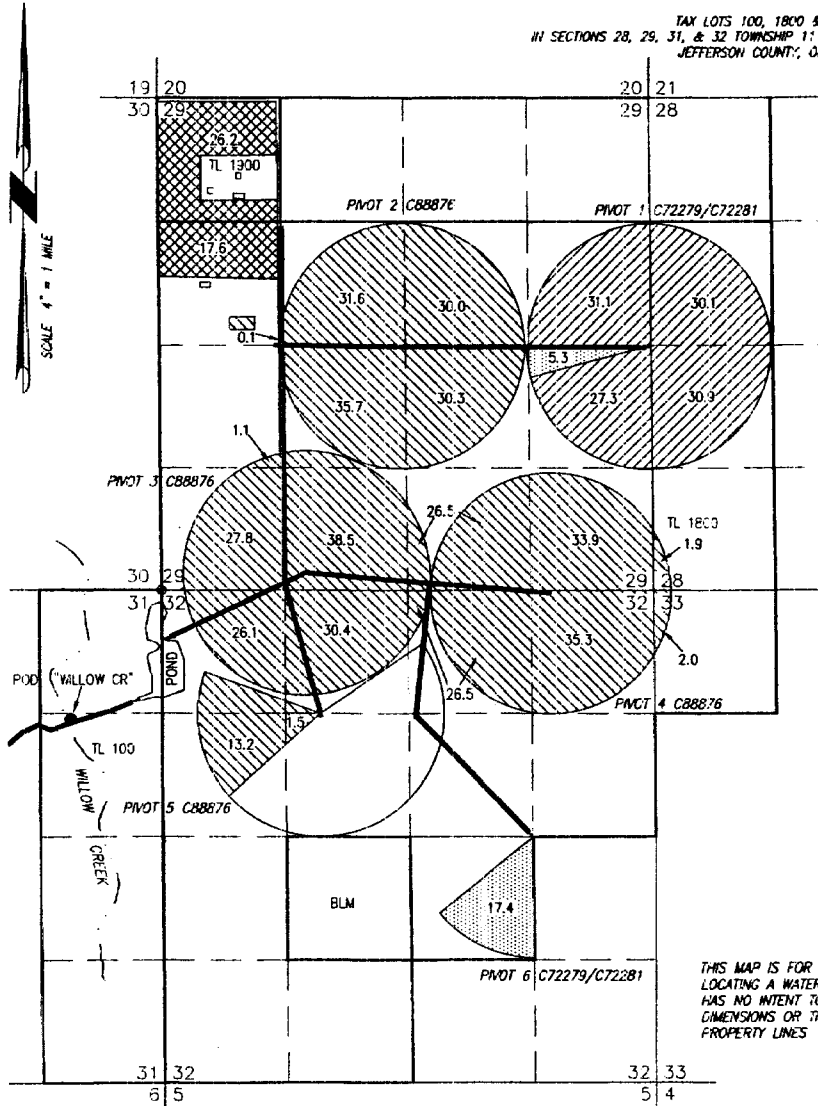


**ALL POINTS ENGINEERING
& SURVEYING, INC.**
P.O. BOX 767
TERREBONNE, OREGON 97760
(541) 548-5833 PH
(541) 585-4602 FX
www.APE.ndS.com

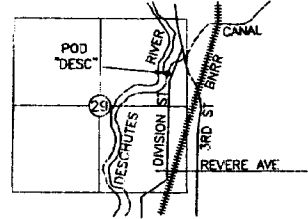
PROJECT No. 13-070
PREPARED AT THE REQUEST OF:
NORTON CATTLE COMPANY, LLC
P.O. BOX 728
MADRAS, OR 97741

MAP TO ACCOMPANY APPLICATION TO CHANGE PLACE OF USE FOR NORTH UNIT IRRIGATION DISTRICT

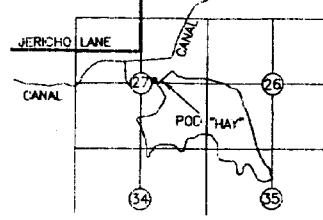
TAX LOTS 100, 1800 & 1900
IN SECTIONS 28, 29, 31, & 32 TOWNSHIP 11 SOUTH, RANGE 14 EAST, W.M.
JEFFERSON COUNTY, OREGON



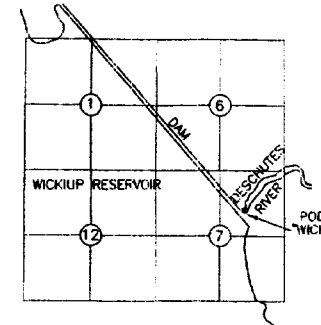
POD DESCHUTES RIVER "DESC" (C72279)
LOCATED IN THE SE 1/4 NE 1/4 SECTION 29, T17S R12E,
W.M. & 1700 FEET SOUTH & 730 FEET WEST FROM NE
CORNER SECTION 29.



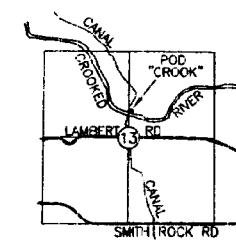
POD HAYSTACK RESERVOIR "HAY" (C72279)
LOCATED IN THE SW 1/4 NE 1/4 SECTION 27,
T12S R12E, W.M.



POD WICKIUP RESERVOIR "WICK" (C72279)
LOCATED IN THE SW 1/4 NE 1/4 SECTION
7, T22S R9E, W.M.



POD CROOKED RIVER "CROOK" (C88876 & C72281)
LOCATED IN THE SW 1/4 NE 1/4 SECTION 13,
T14S R13E, W.M. & 590 FEET NORTH & 2790
FEET EAST FROM W 1/4 CORNER SECTION 13.

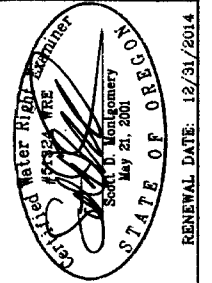


THIS MAP IS FOR THE PURPOSE OF
LOCATING A WATER RIGHT ONLY AND
HAS NO INTENT TO PROVIDE LEGAL
DIMENSIONS OR THE LOCATION OF
PROPERTY LINES

- | | |
|---|--|
| "FROM" NORTON POU
119.4 AC WATER RIGHTS FROM
C72279 (1913) & C72281
(1955), AS SHOWN. | "FROM" NORTON POU
392.4 AC WATER RIGHTS FROM
C88876 (1968), AS SHOWN. |
| "FROM" WILLIAMS POU
22.7 AC WATER RIGHTS FROM
C72279 (1913) & C72281
(1955), AS SHOWN. | "FROM" WILLIAMS & ERLANDSEN PCU
43.8 AC WATER RIGHTS FROM
C88876 (1968), AS SHOWN. |

BURIED PIPE

⊕ 3-1/2" BRASS CAPPED SECTION MONUMENT



RENEWAL DATE: 12/31/2014

**ALL POINTS ENGINEERING
& SURVEYING, INC.**

P.O. BOX 767
TERREBONNE, OREGON 97760
(541) 548-5833 PH
(541) 585-4602 FX
www.APEandS.com

PROJECT No. 13-070

PREPARED AT THE REQUEST OF:
NORTON CATTLE COMPANY, LLC
P.O. BOX 728
MADRAS, OR 97741

RECEIVED

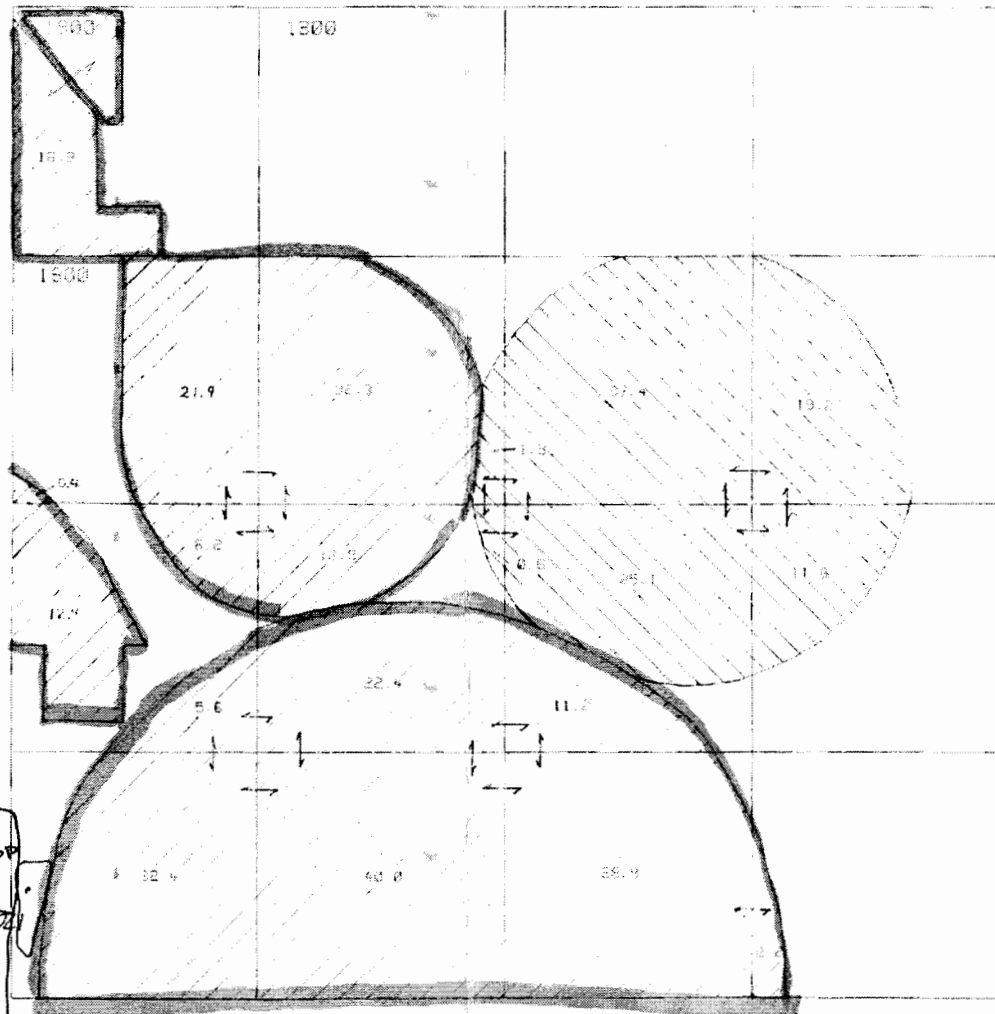
APR 07 2014

OWRD

NORTH UNIT IRRIGATION DISTRICT
Section 29 T.11S. R.14E. W.M.
JEFFERSON COUNTY
1"=400'

11 14 29

RECEIVED
APR 07 2014
OWRD

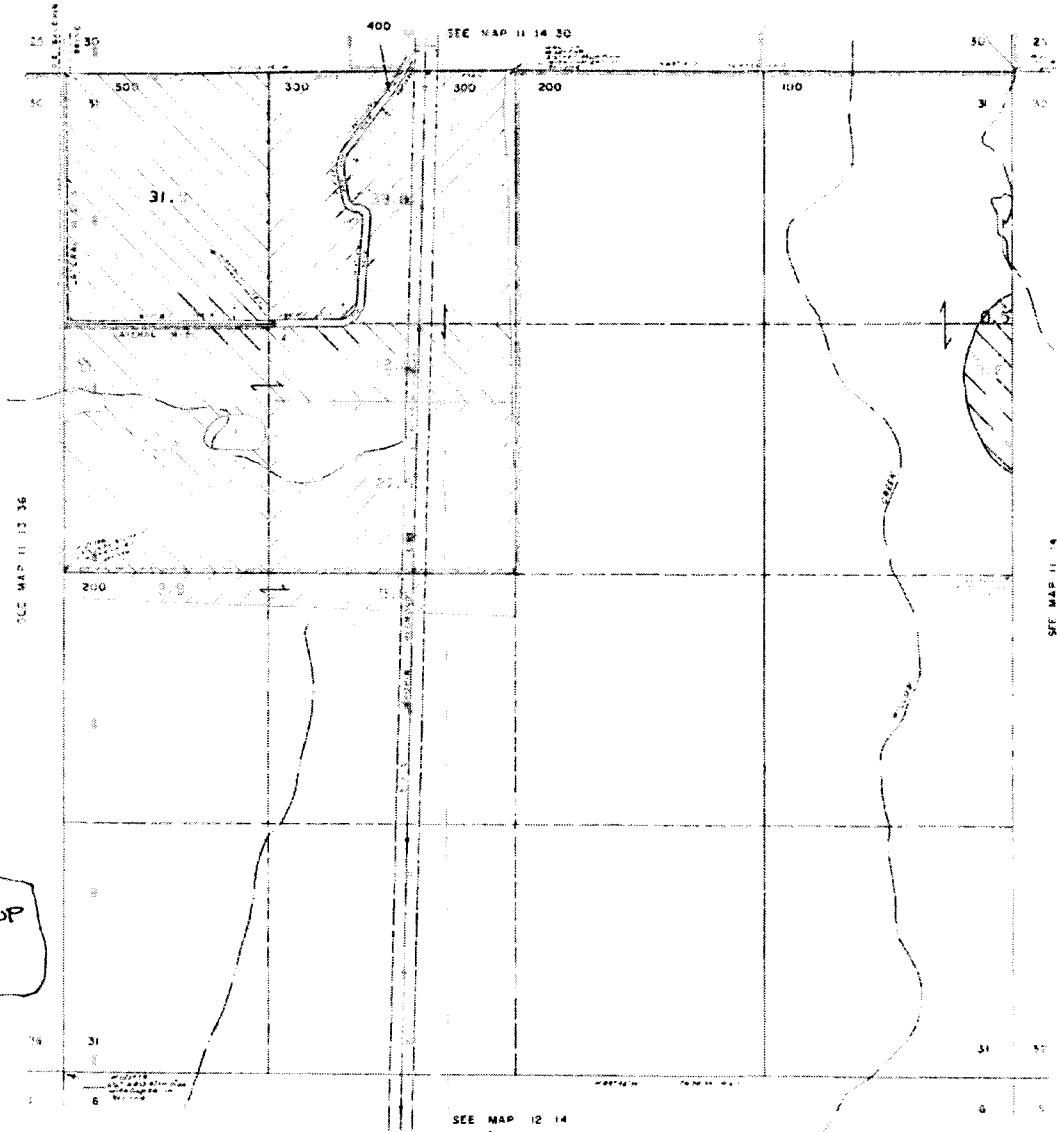


96.0 AC PICKED UP
RESCHUTES RIVER
529196 #525721
CROOKED RIVER
533954
255.5 AC PICKED UP

11 14 29

NORTH UNIT IRRIGATION DISTRICT
Section 31 T.11S. R.14E. W.M.
JEFFERSON COUNTY
1" = 400'

11 14 31



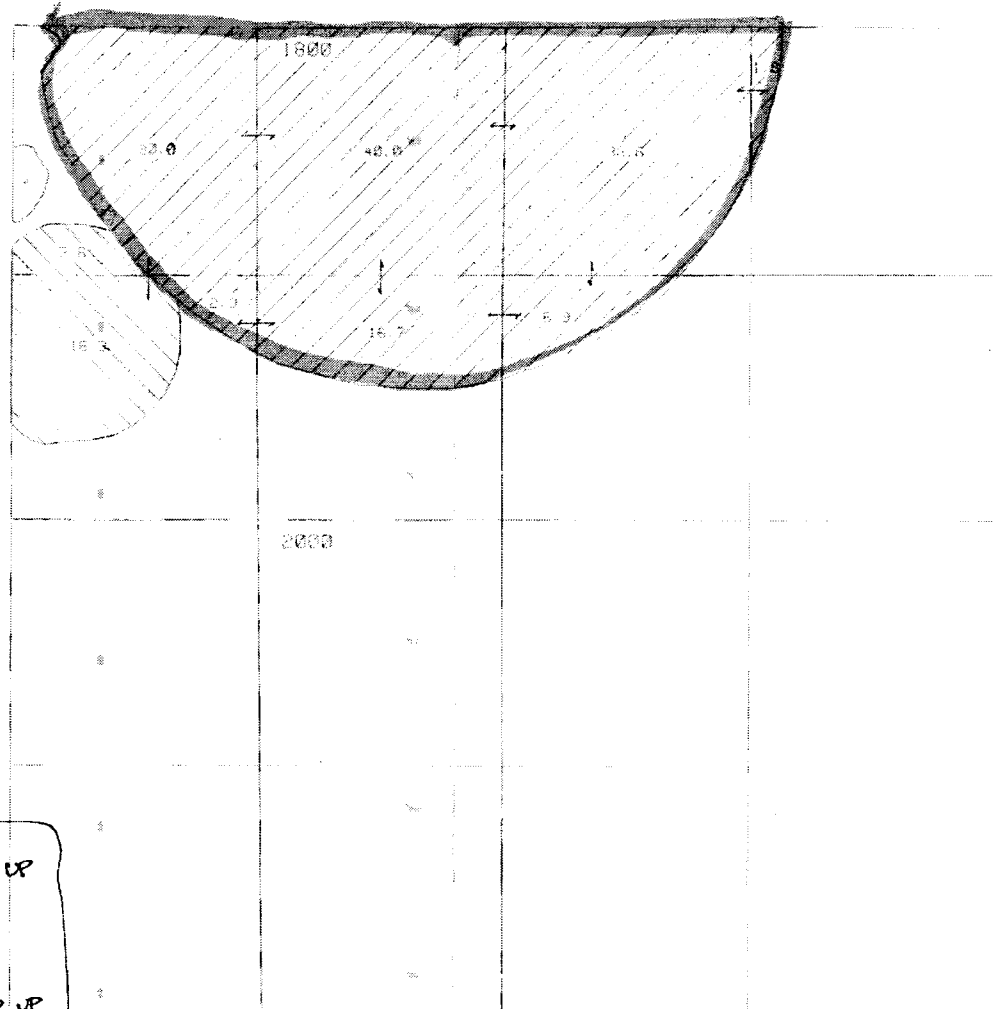
RECEIVED
APR 07 2014
OWRD

3.5 AC PICKED UP
DESIGNATED RIVER
CROOK "15"
CROOKED RIVER

11 14 31

NORTH UNIT IRRIGATION DISTRICT
Section 32 T.11S. R.14E. W.M.
JEFFERSON COUNTY
1"=400'

11 14 32

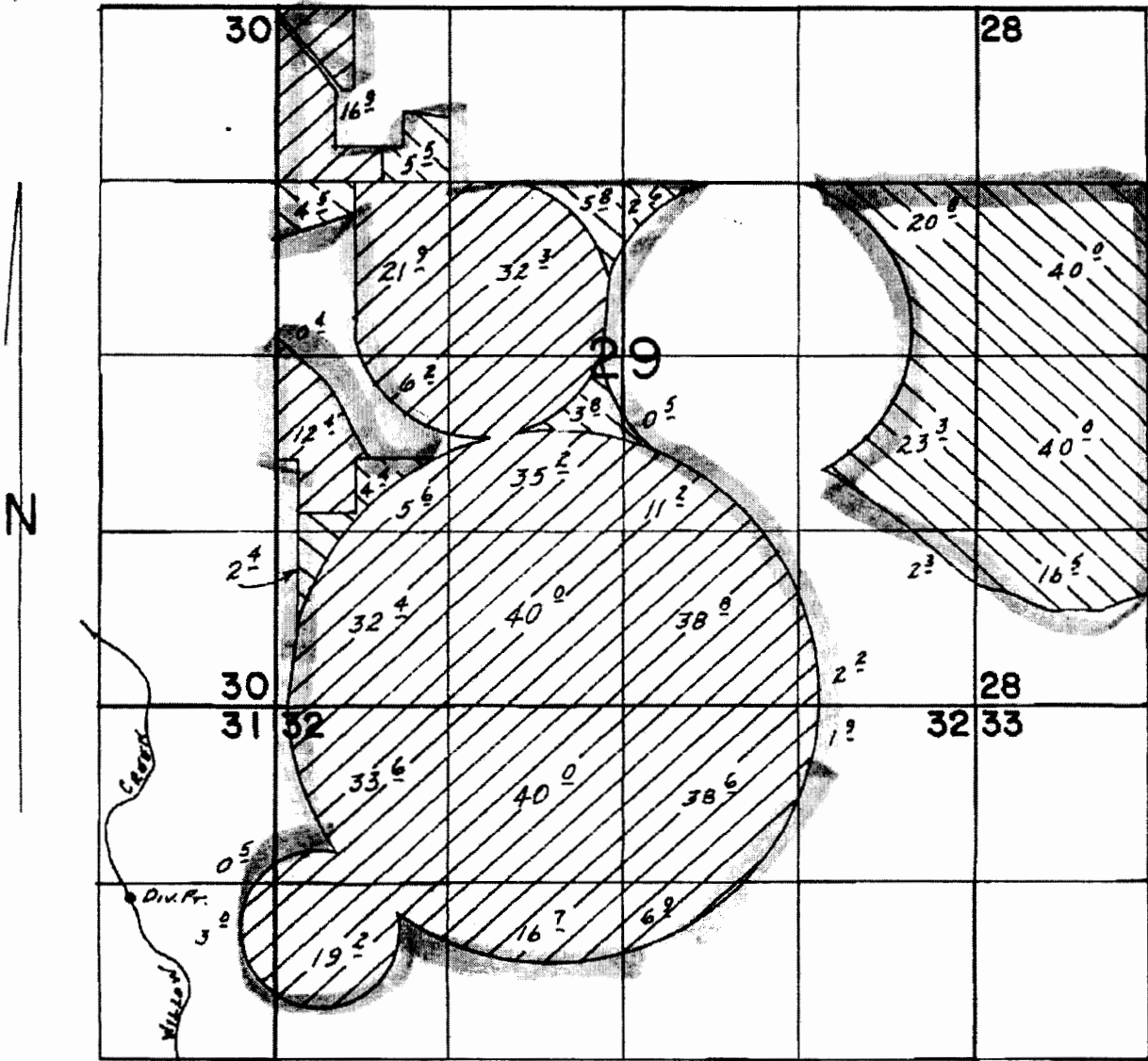


RECEIVED
APR 07 2014
OWRD

19.9 AC PICKED UP
DESIGNATED RIVER
& CROOK "15"
DESIGNATED RIVER
136.9 AC PICKED UP

11 14 32

T. 11 S., R. 14 E., W.M.

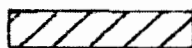


DIV. PR. LOC.: 1440 S. & 1080 W. FROM NE COR. SEC. 31

SCALE: 1" = 1320'



PRIMARY



SUPPLEMENTAL

* ALL P.O.U. PICKED UP *

FINAL PROOF SURVEY
UNDER

Application No. 50045 Permit No. 45102..... C 75751
IN NAME OF

...SANDNERS RANCH PARTNERS...

Surveyed APR 5, 1988, by R.W. BISHOP...
APR 19 1994 R.M. SUTTERFIELD

RECEIVED

APR 07 2014

OWHD

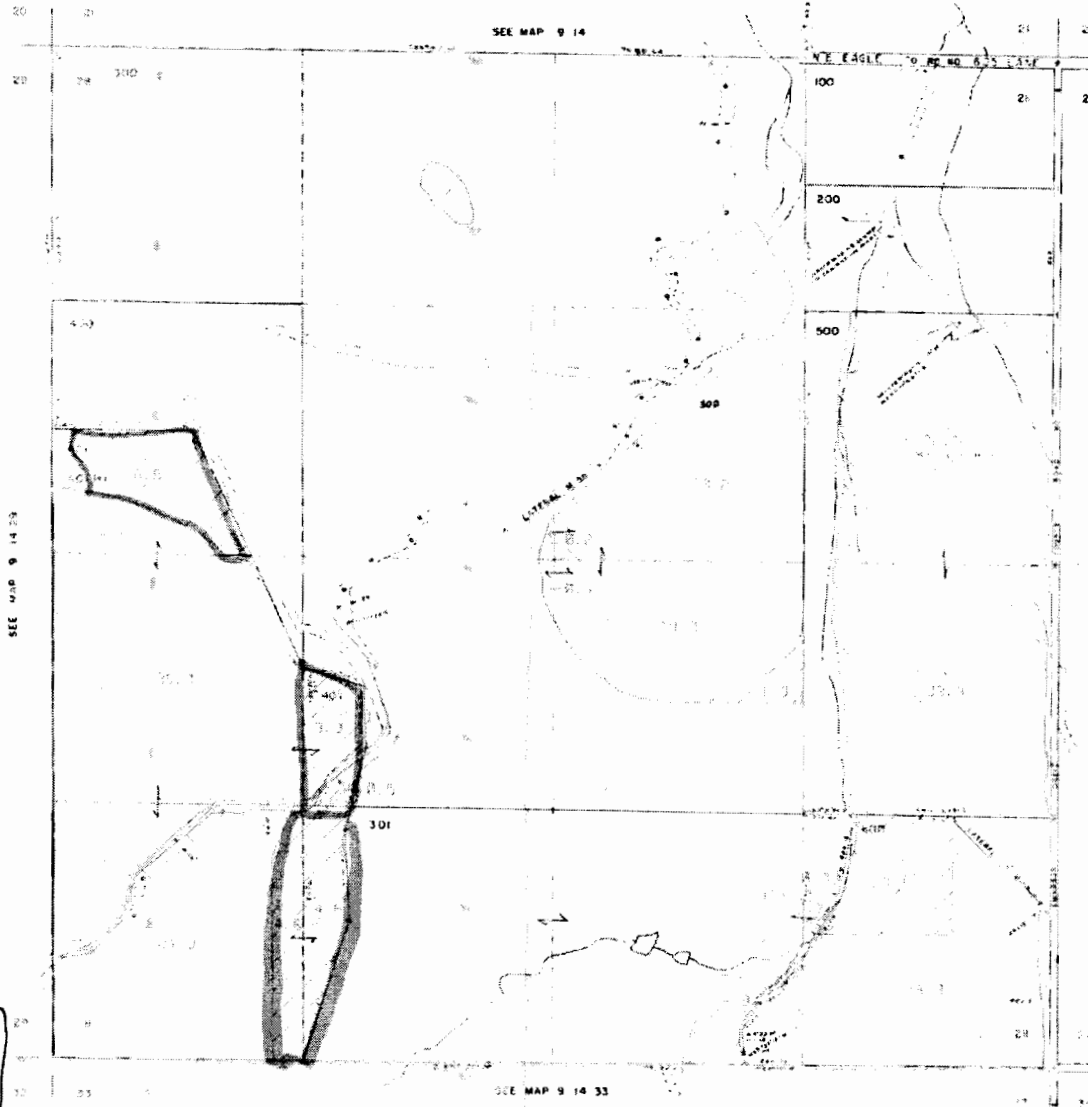
Pts 11-1988
A9E1-6E-1E01

3-8-96
BWS

45102

NORTH UNIT IRRIGATION DISTRICT
Section 28 T.9S. R.14E. W.M.
JEFFERSON COUNTY
1" = 400'

9 14 28



RECEIVED
APR 07 2014
OWRD

6.8 SW
NW
4.4 NE
SW
4.6 SW
4.6 SE
SW w/R
ALL CR

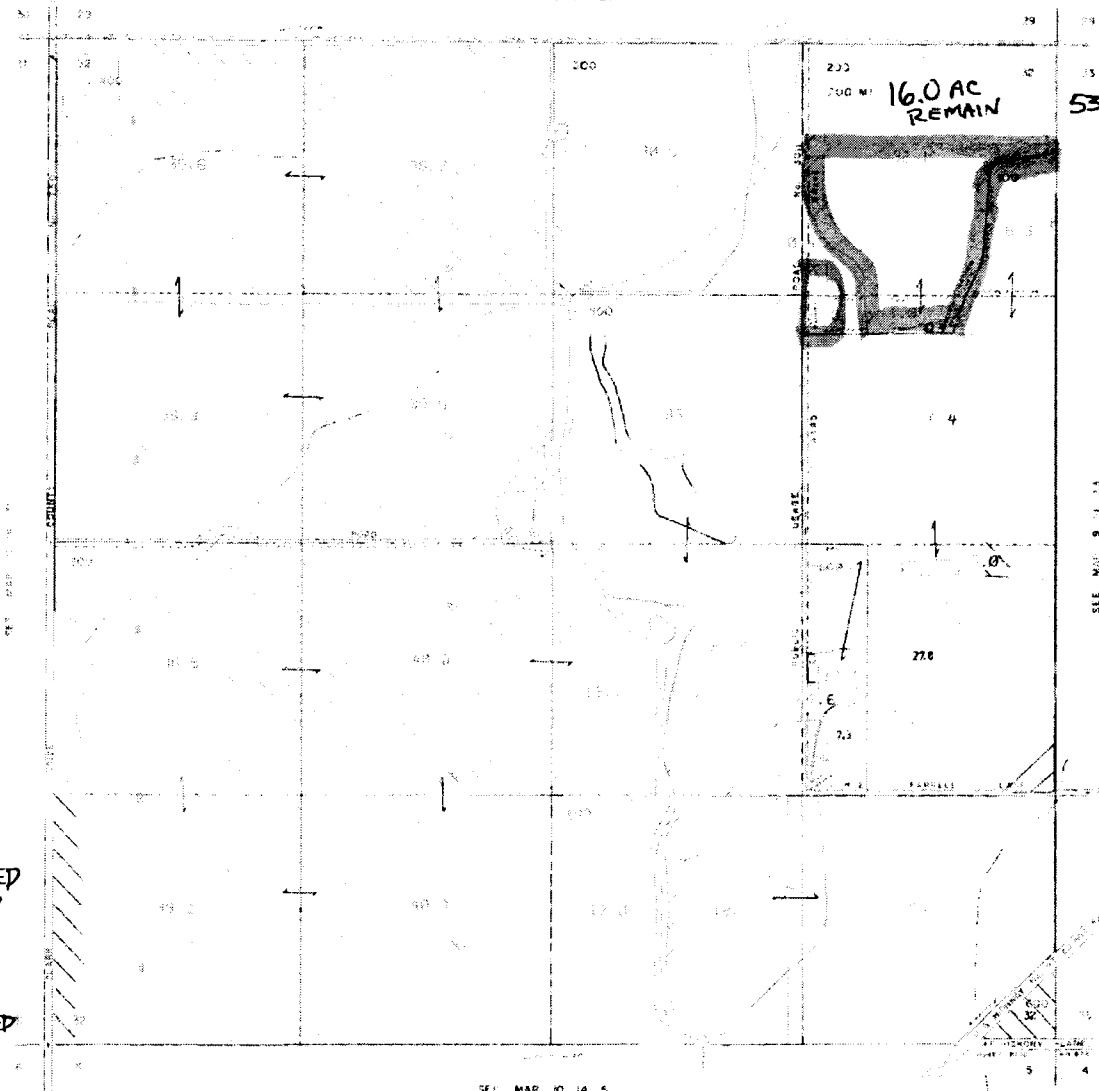
○ CROSS RIVER
○ CROSS RIVER
20.4 AC PICKED UP
OP

9 14 28

NORTH UNIT IRRIGATION DISTRICT
Section 32 T. 9 S. R. 14 E. W. M.
JEFFERSON COUNTY

9 14 32

SEE MAP 9 14 29



530' x 1320' & 16 AC

RECEIVED
APR 07 2014
OWRD

0.3 AC PICKED UP

- CROSS-BRIDGE RIVER
- DROPPED PILE

19.3 AC PICKED UP

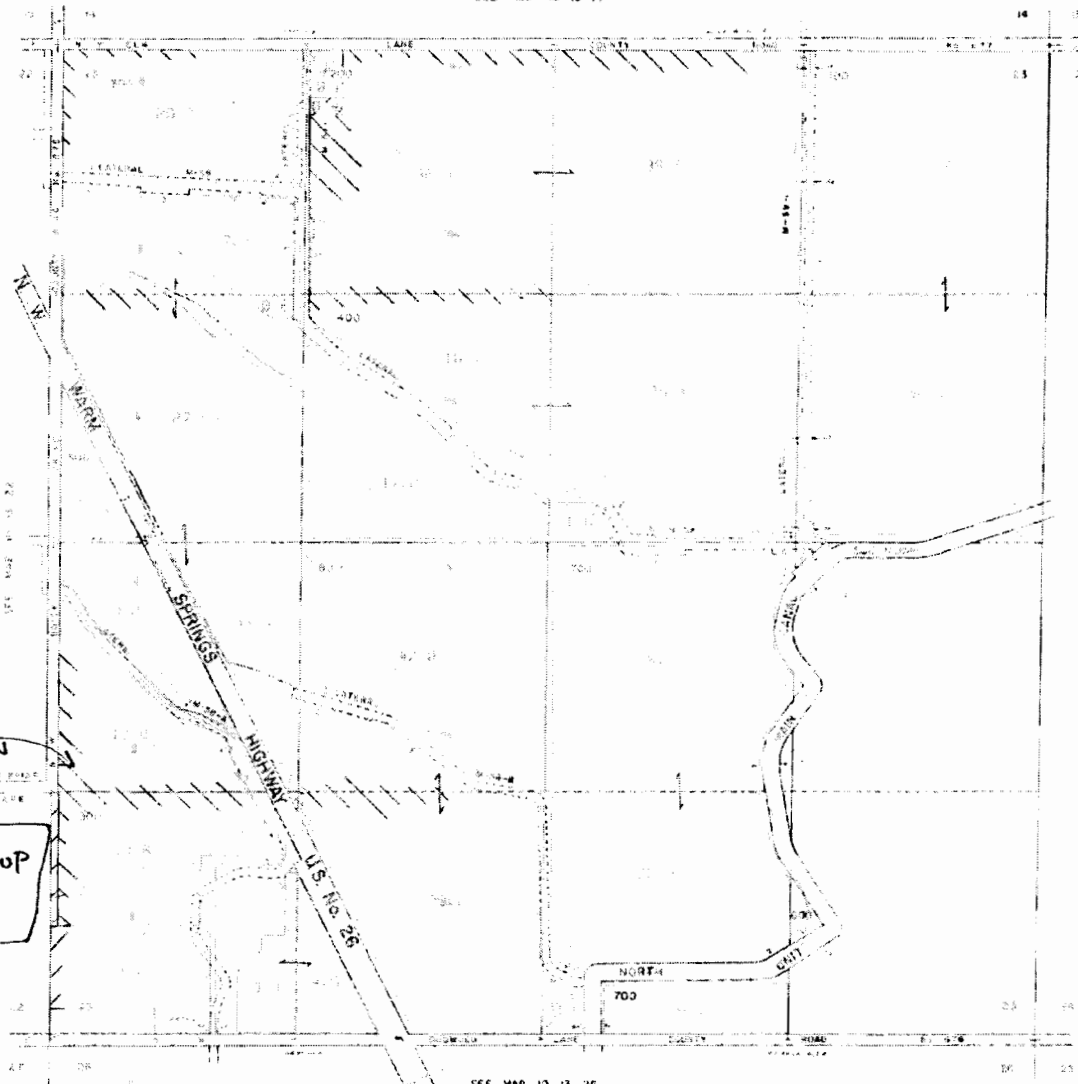
SEE MAP 10 14 5

9 14 32

NORTH UNIT IRRIGATION DISTRICT
Section 23 T10S. R13E W. M.
JEFFERSON COUNTY
1"=400'

10 13 23

SEE MAP 10 13 14



RECEIVED
APR 07 2014
OWRD

4.0 AC
REMAIN

18.0 AC PICKED UP

- CROWNED RIVER
- CROWNED RIVER

SEE MAP 10 13 26

10 13 23

NORTH UNIT IRRIGATION DISTRICT
Section 25 T11S. R13E. W. M.
JEFFERSON COUNTY
1" = 400'

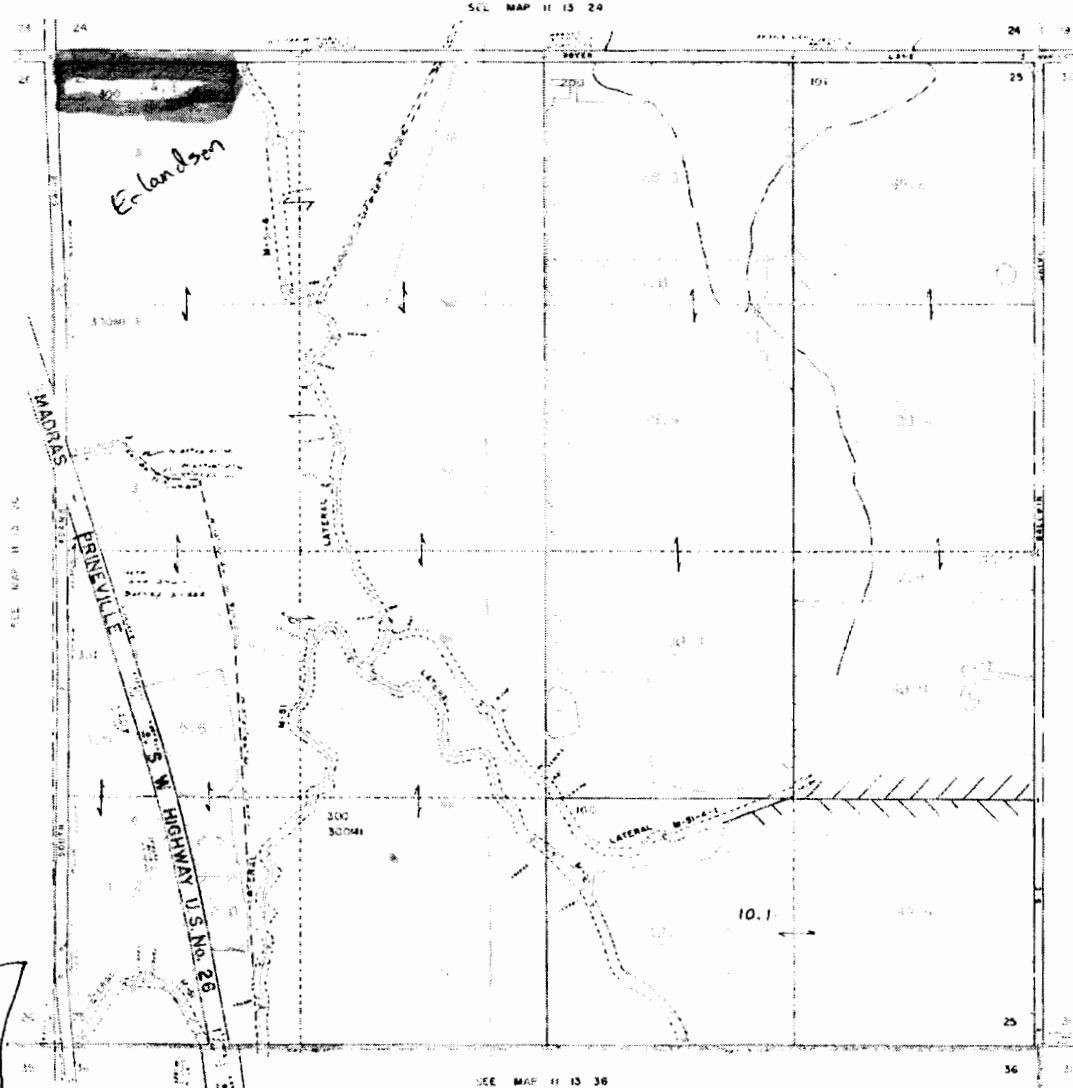
11 13 25

CANCELLED NO
307

CROOKED R.
4.1

RECEIVED
APR 07 2014
OWRD

DESCHUTES RIVER
CROOKED RIVER
4.1 AC
PLICKED UP



11 13 25