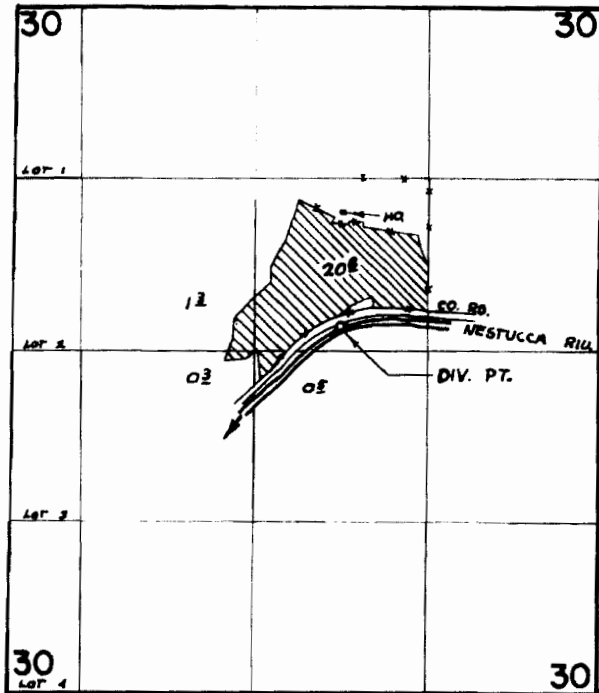


From map

# T. 3 S. R. 8 W. W. M.



DIV. PT. LOC. 1130' S. & 670' W FROM NE COR. SW1/4 NE1/4

## FINAL PROOF SURVEY UNDER

Application No. 37463... Permit No. 27891...  
IN NAME OF

..... ERNEST G. HARRIS .....

Surveyed AUG. 12., 1971., by R. MUCKEN.....

RECEIVED BY OWRD

APR 16 2014

SALEM, OR

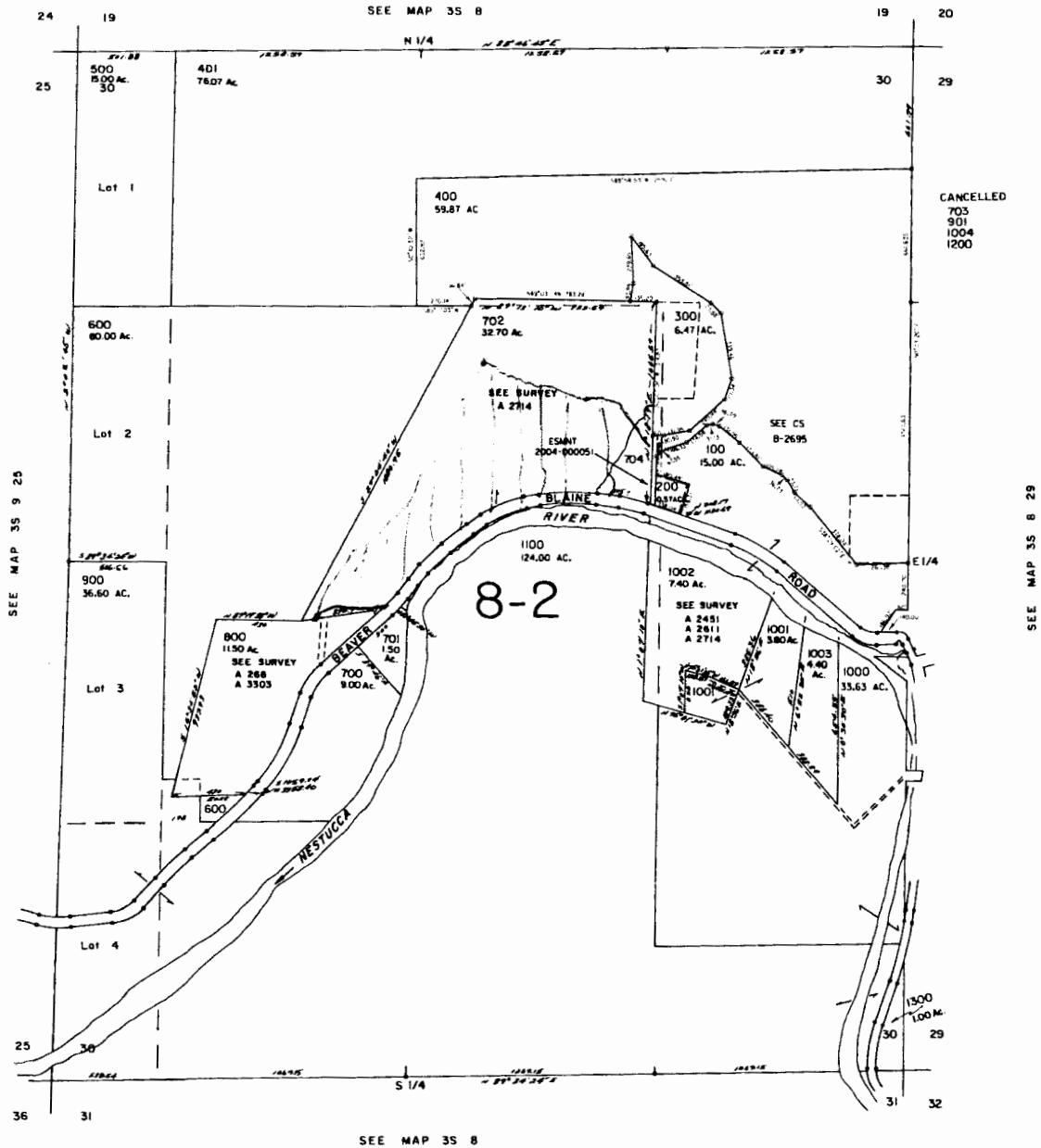
THIS MAP WAS PREPARED FOR  
ASSESSMENT PURPOSE ONLY

SECTION 30 T.3S. R.8W. W.M.  
TILLAMOOK COUNTY

1" = 400'

*From LAND* 3S 8 30

RECEIVED BY OWRD  
APR 16 2014  
SALEM, OR



3S 8 30

REVISED 05/01/06, WS

FOR ASSESSMENT AND TAXATION ONLY, NOT SUITABLE FOR  
LEGAL, ENGINEERING, OR SURVEY PURPOSES

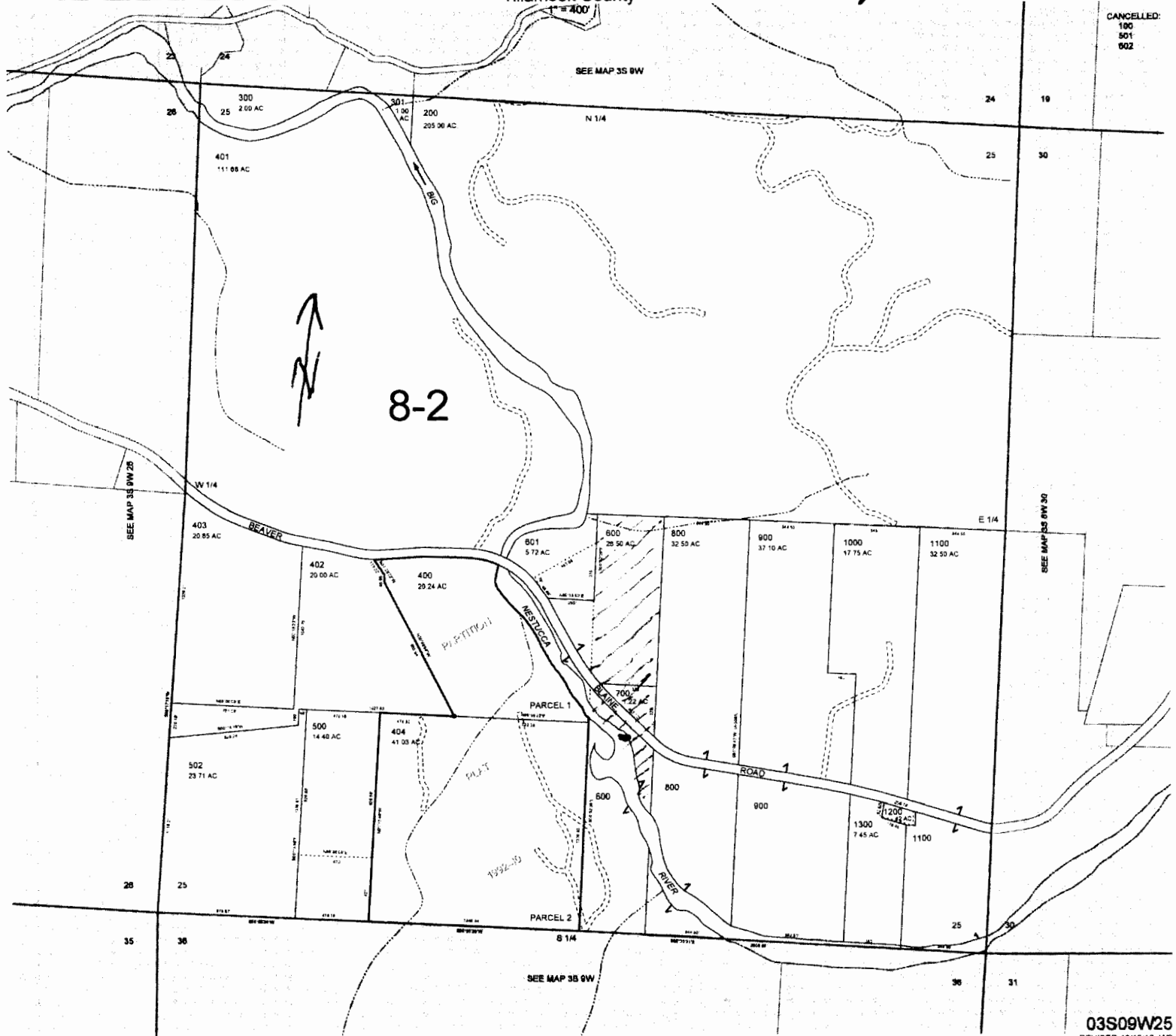
SECTION 25 T.3S. R.9W. W.M.  
Tillamook County

*TO MAP*

03S09W25

CANCELLED:  
100  
301  
302

RECEIVED BY OWRD  
APR 16 2014  
SALEM, OR



03S09W25  
REVISED 10/16/12, WS