

Application for a Temporary Transfer - From Lands For Threemile Canyon Farms

Certificate 89059, Permit G-13820

Township 3 South, Range 38 East (W.M.)



Document Path: P:\Portland\210 - Threemile Canyon Farms\004 - Consulting Services\Project_GIS\Project_mxd\Temp_VFR_Transfer_Cert89059_From_Lands.mxd

LEGEND

- Authorized Point of Appropriation (POA)
- Authorized Place of Use (POU) - From Lands
- Tax Lots
- Waterbodies
- Watercourses
- Railroad

Disclaimer

This map was prepared for the purpose of identifying the location of a water right only and it is not intended to provide legal dimensions or location of property ownership lines.

Map Notes

Date: April 16, 2014
Data Sources: Union County GIS, OWRD, US BLM, USGS, OGIC
Prepared By: GSI Water Solutions, Inc.

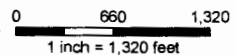
RECEIVED

MAY 05 2014

OWRD

POA Location Description

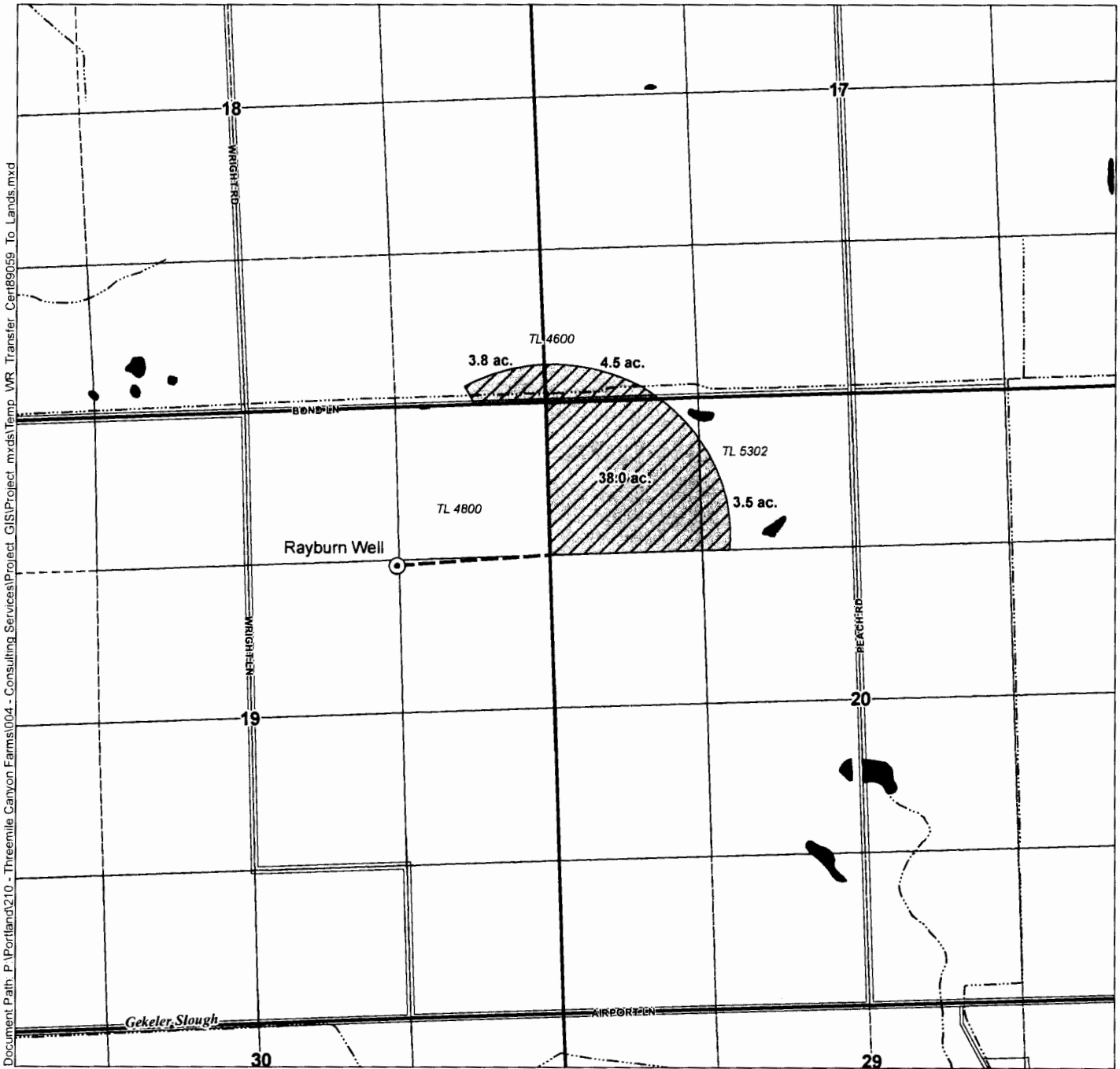
Pierce Road Well
Located 1,280 feet North and 80 feet East from the SW corner of Section 13, Township 3 South, Range 38 East (W.M.)



Application for a Temporary Transfer - To Lands For Threemile Canyon Farms

Certificate 89059, Permit G-13820

Township 3 South, Range 39 East (W.M.)



Document Path: P:\Portland\210 - Threemile Canyon Farms\004 - Consulting Services\Project_GIS\Project_mxd\Temp_WR_Transfer_Cert89059_To_Lands.mxd

LEGEND

- Proposed Point of Appropriation (POA)
- Proposed Place of Use (POU) - To Lands
- 10 inch Buried Mainline
- Tax Lots
- Waterbodies
- Watercourses

POA Location Description

Rayburn Well
Located 1,380 feet South and 1,300 feet East from the N 1/4 corner of Section 19, Township 3 South, Range 39 East (W.M.)

RECEIVED
MAY 05 2014
OWSD

Disclaimer

This map was prepared for the purpose of identifying the location of a water right only and it is not intended to provide legal dimensions or location of property ownership lines.

Map Notes

Date: April 17, 2014
Data Sources: Union County GIS, OWRD, US BLM, USGS, OGIC
Prepared By: GSI Water Solutions, Inc.

