

RECEIVED

JUN 11 2014

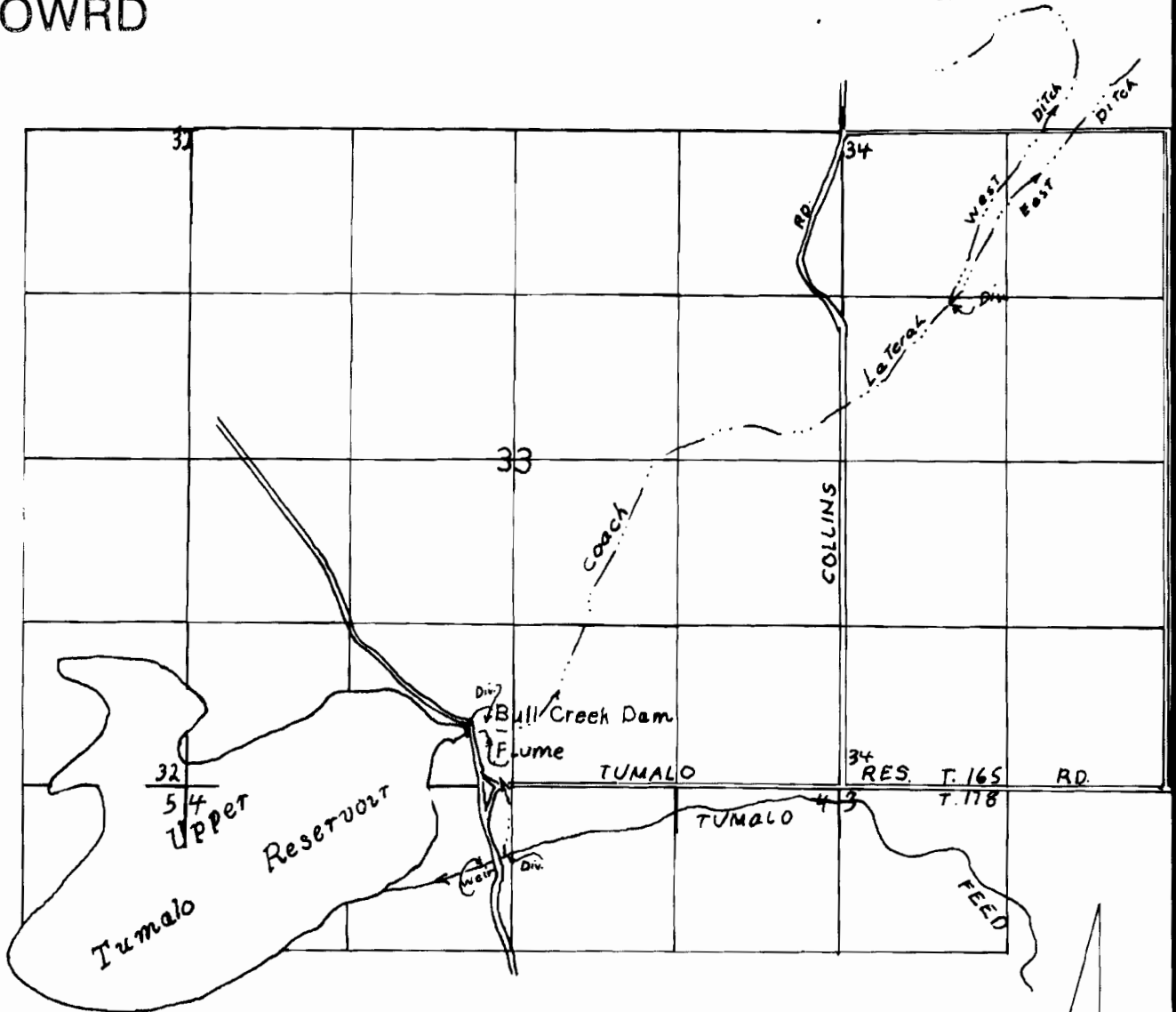
OWRD

T.16,17S.,R.11E.,W.M.

RECEIVED

OCT 06 1998

WATER RESOURCES DEPT
SALEM, OREGON



FINAL PROOF SURVEY UNDER

Application No. R-37238 Permit No. R-2743
IN NAME OF

TUMALO IRRIGATION DISTRICT

Surveyed AUG.26. 19.98., by R.M.SUTTERFIELD

23
T.17S., R.11E
DIV. PT. 2080'S & 1310' W FROM
NE COR. OF SEC. 23.

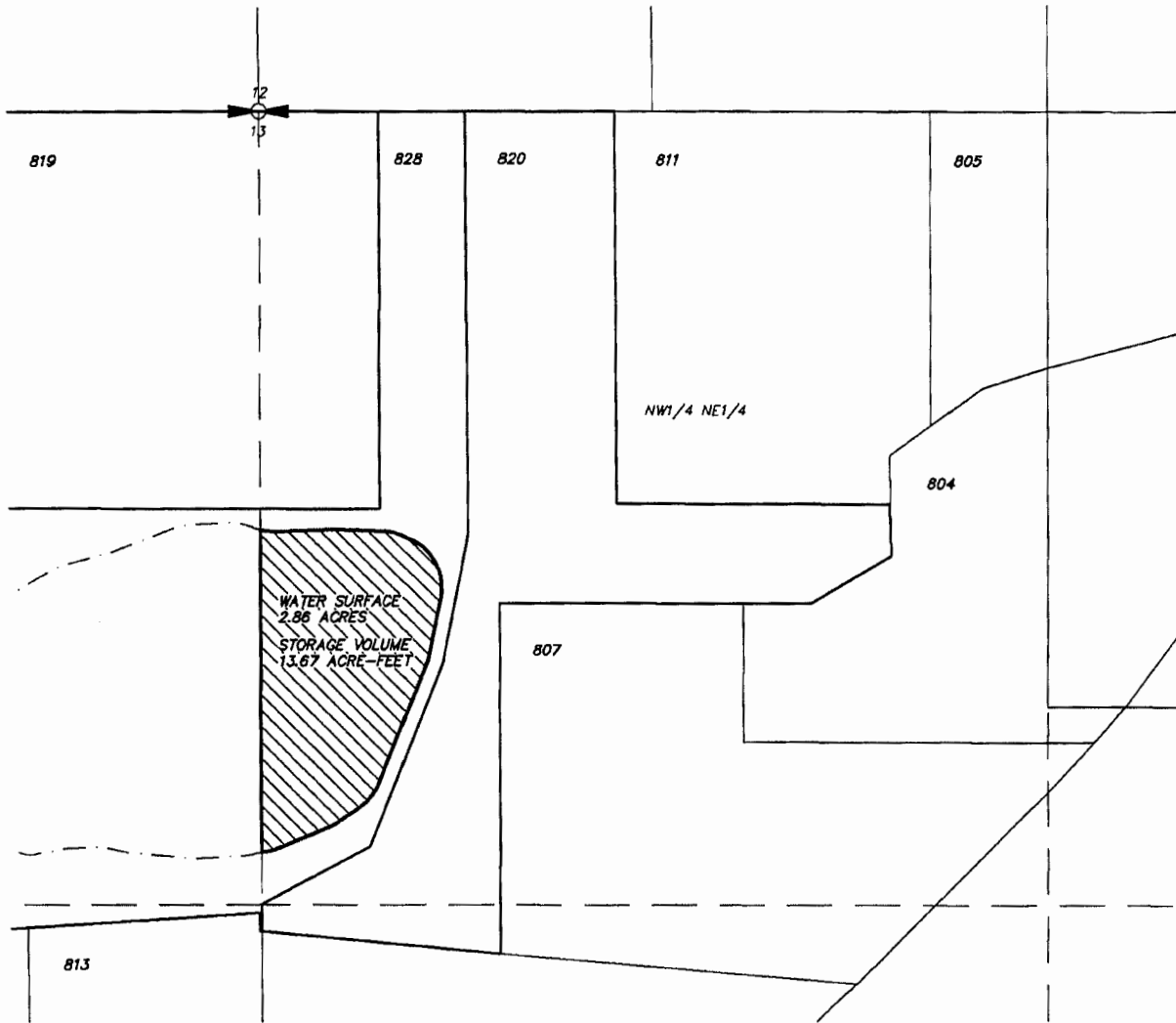
TT14.010

RECEIVED
JUN 11 2014
OWRD

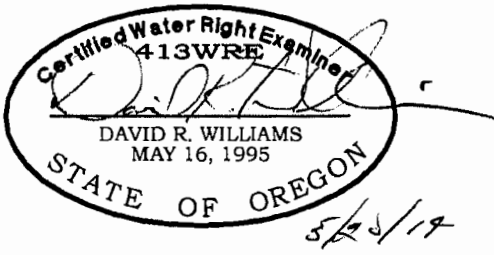
DESCHUTES COUNTY
SECTION 13 T17S R11E W.M.
NW 1/4 OF THE NE 1/4



SCALE: 1"=300'



STORAGE MAP



TAX LOT NO. 828: 13.67 ACRE-FEET



STORAGE RIGHT

HWA SURVEYORS, ENGINEERS
& PLANNERS
HICKMAN, WILLIAMS & ASSOCIATES, INC
1201 NW WALL STREET, SUITE 100
BEND, OREGON 97701
PHONE: 541.389.9351 FAX: 541.388.5416

APPLICATION FOR STORAGE RIGHT TRANSFER
KC DEVELOPMENT GROUP, LLC

DATE: 5/20/2014

041125-WATER RIGHTS-OLDTAXLOTS.DWG

RECEIVED

JUN 11 2014

OWRD

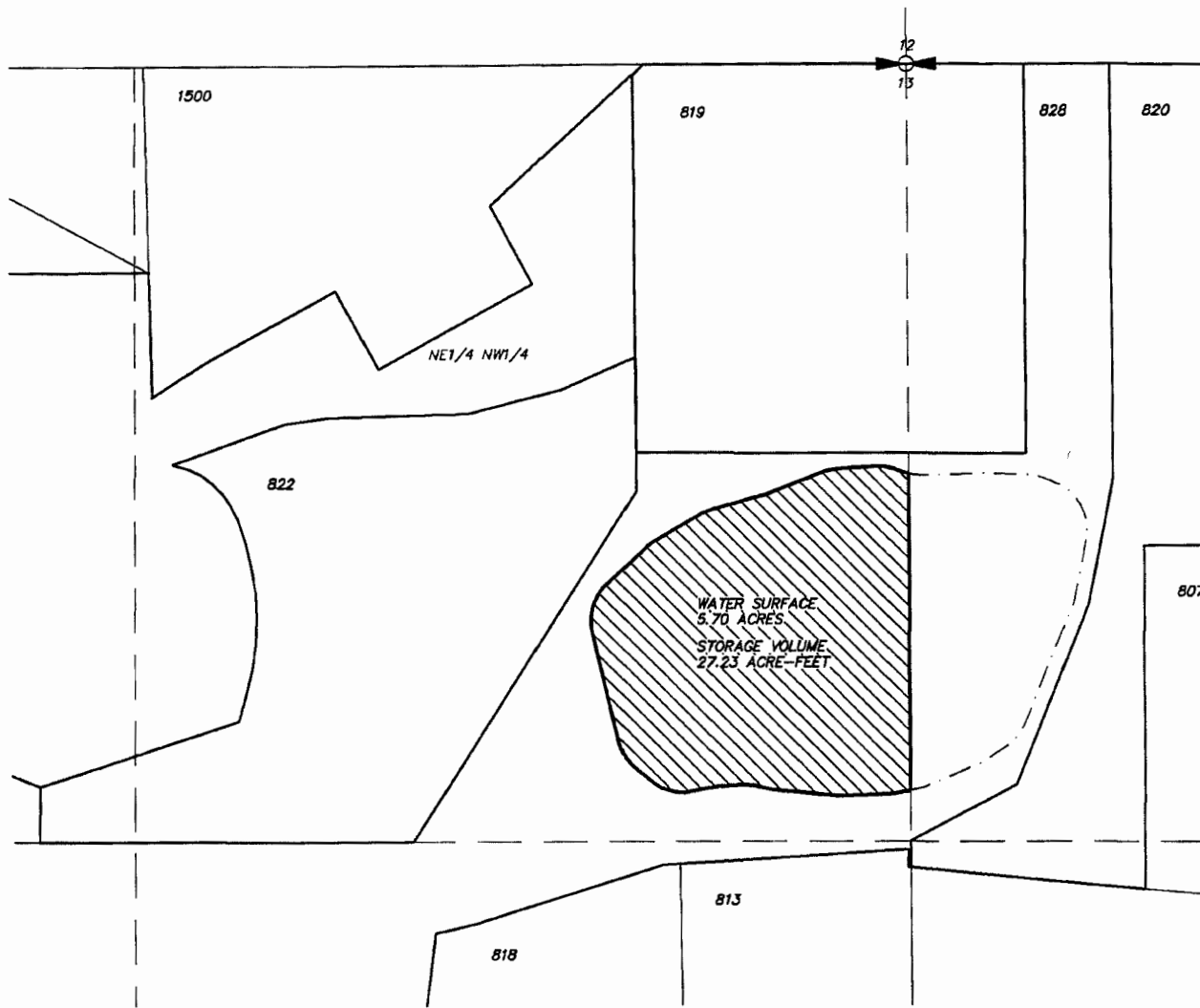
DESCHUTES COUNTY
SECTION 13 T17S R11E W.M.

NE 1/4 OF THE NW 1/4

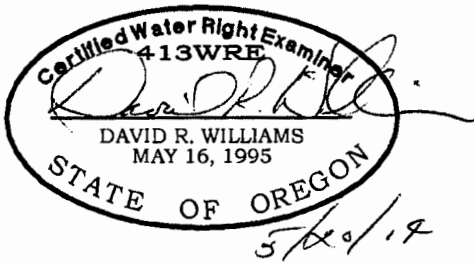
SCALE: 1"=300'



NORTH



STORAGE MAP



TAX LOT NO. 828: 27.23 ACRE-FEET



STORAGE RIGHT

HWA SURVEYORS, ENGINEERS
& PLANNERS
HICKMAN, WILLIAMS & ASSOCIATES, INC
1201 NW WALL STREET, SUITE 100
BEND, OREGON 97701
PHONE: 541.389.9351 FAX: 541.388.5416

APPLICATION FOR STORAGE RIGHT TRANSFER
KC DEVELOPMENT GROUP, LLC

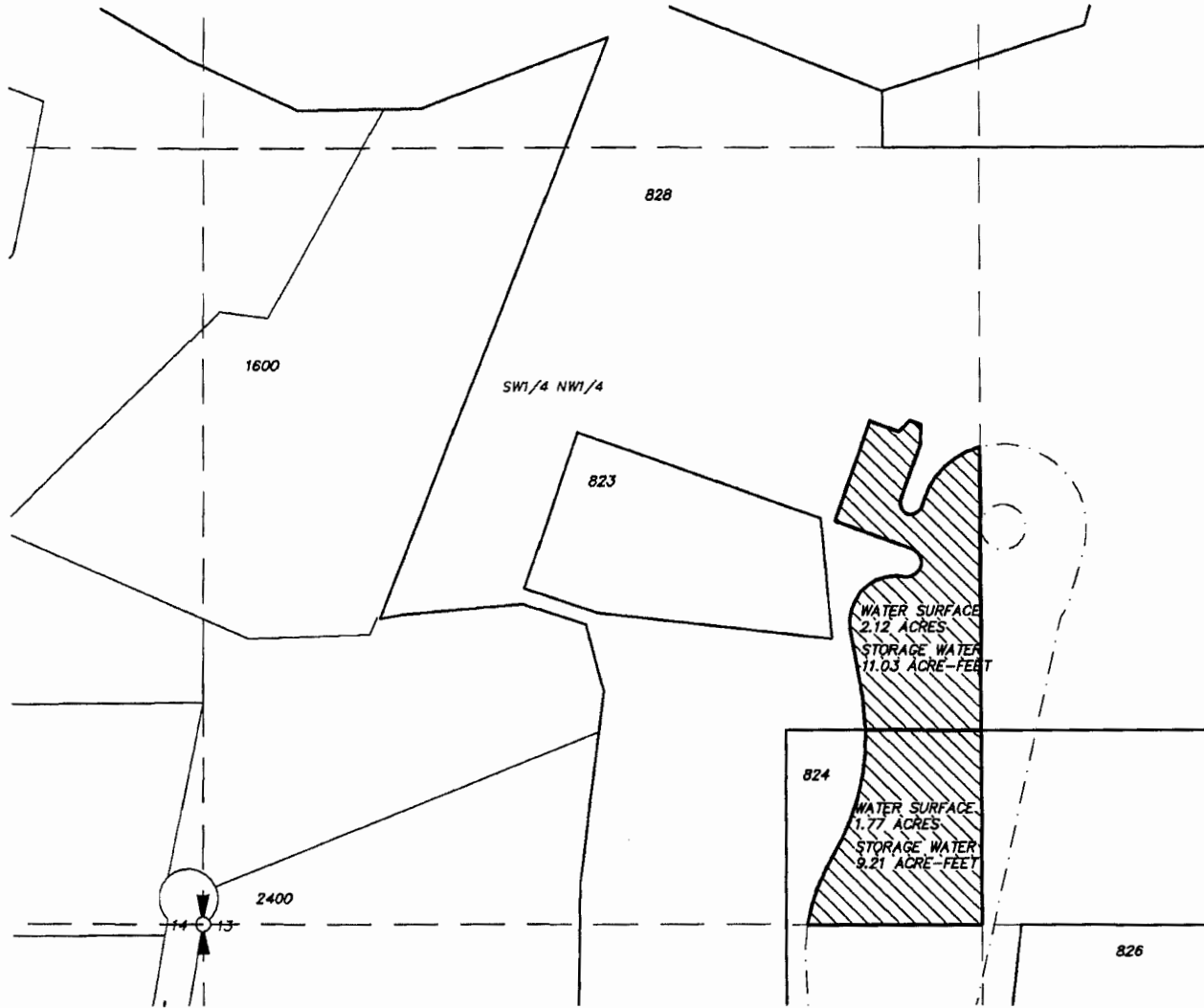
DATE: 5/20/2014

041125-WATER RIGHTS-OLDTAXLOTS.DWG

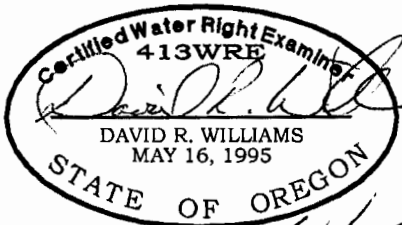
RECEIVED
JUN 11 2014
OWRD

DESCHUTES COUNTY
SECTION 13 T17S R11E W.M.
SW 1/4 OF THE NW 1/4

SCALE: 1"=300'



STORAGE MAP



TAX LOT NO. 828: 11.03 ACRE-FEET
TAX LOT NO. 824: 9.21 ACRE-FEET



STORAGE RIGHT

HWA SURVEYORS, ENGINEERS
& PLANNERS
HICKMAN, WILLIAMS & ASSOCIATES, INC
1201 NW WALL STREET, SUITE 100
BEND, OREGON 97701
PHONE: 541.389.9351 FAX: 541.388.5414

APPLICATION FOR STORAGE RIGHT TRANSFER
KC DEVELOPMENT GROUP, LLC

DATE: 5/20/2014

041125-WATER RIGHTS-OLDTAXLOTS.DWG

TT14.010

RECEIVED

JUN 11 2014

OWRD

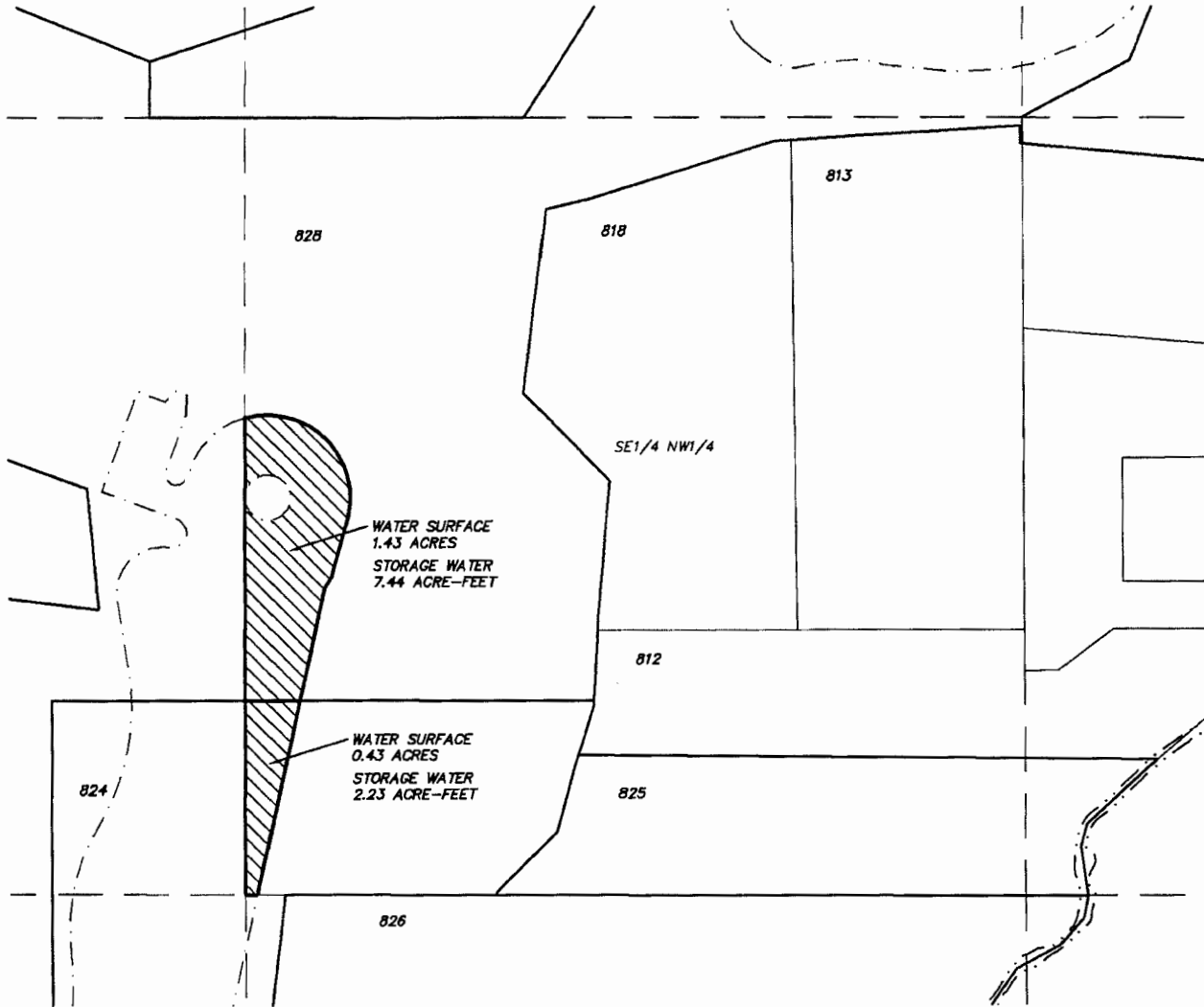
DESCHUTES COUNTY
SECTION 13 T17S R11E W.M.

SE 1/4 OF THE NW 1/4

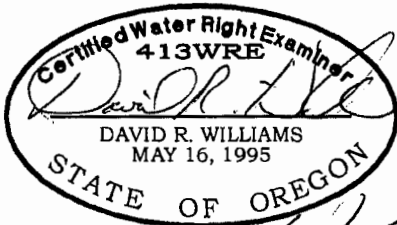
SCALE: 1"=300'



NORTH



STORAGE MAP



TAX LOT NO. 828: 7.44 ACRE-FEET

TAX LOT NO. 824: 2.23 ACRE-FEET



STORAGE RIGHT

HWA SURVEYORS, ENGINEERS
& PLANNERS
HICKMAN, WILLIAMS & ASSOCIATES, INC.

1201 NW WALL STREET, SUITE 100
BEND, OREGON 97701
PHONE: 541.389.9351 FAX: 541.388.5416

APPLICATION FOR STORAGE RIGHT TRANSFER
KC DEVELOPMENT GROUP, LLC

DATE: 5/20/2014

041125-WATER RIGHTS-OLDTAXLOTS.DWG

RECEIVED

JUN 11 2014

OWRD

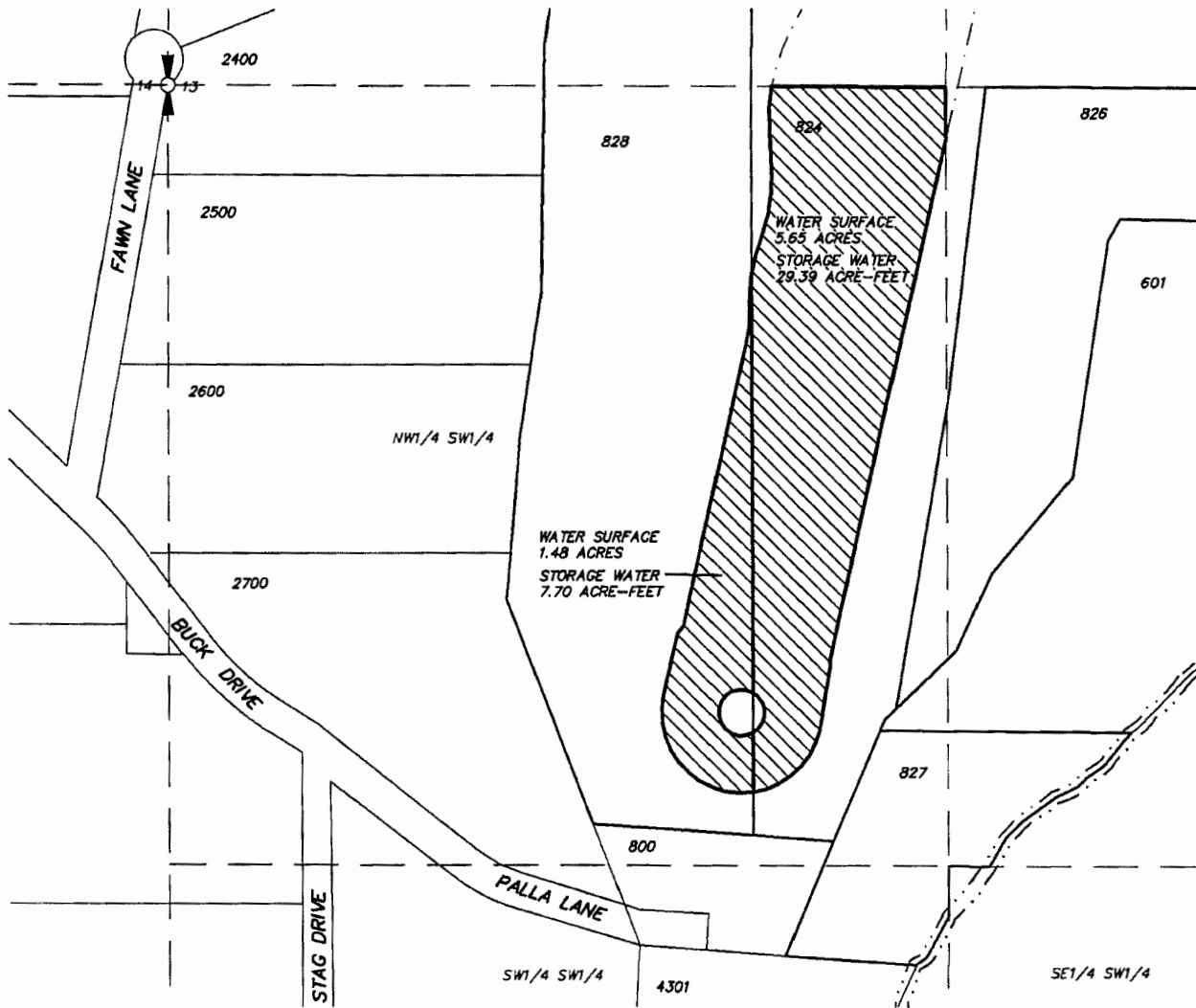
DESCHUTES COUNTY
SECTION 13 T17S R11E W.M.

NW 1/4 OF THE SW 1/4

SCALE: 1"=300'



NORTH



STORAGE MAP

Certified Water Right Examiner
413WRE
David R. Williams
DAVID R. WILLIAMS
MAY 16, 1995
STATE OF OREGON
5/28/14

TAX LOT NO. 828: 7.70 ACRE-FEET
TAX LOT NO. 824: 29.39 ACRE-FEET

 STORAGE RIGHT

HWA SURVEYORS, ENGINEERS & PLANNERS
HICKMAN, WILLIAMS & ASSOCIATES, INC.
1201 NW WALL STREET, SUITE 100
BEND, OREGON 97701
PHONE: 541.389.9351 FAX: 541.388.5416

APPLICATION FOR STORAGE RIGHT TRANSFER
KC DEVELOPMENT GROUP, LLC

DATE: 5/20/2014

041125-WATER RIGHTS-OLDTAXLOTS.DWG

TT14.010

RECEIVED

JUN 11 2014

OWRD

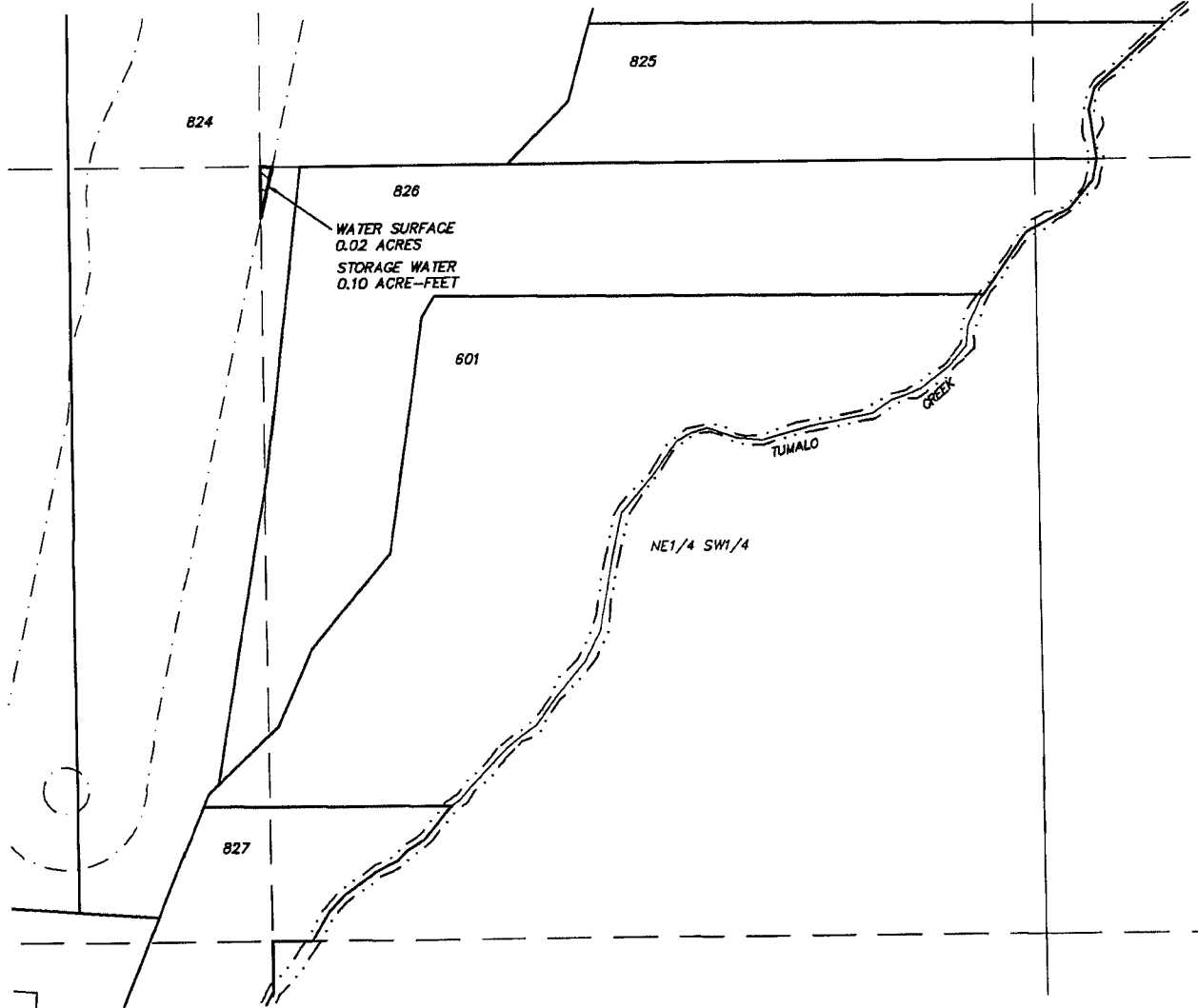
DESCHUTES COUNTY
SECTION 13 T17S R11E W.M.

NE 1/4 OF THE SW 1/4

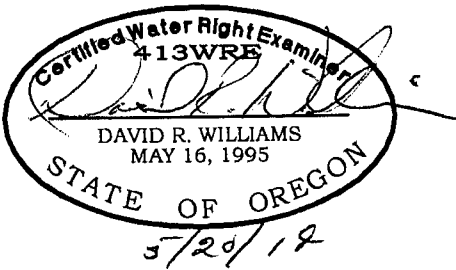
SCALE: 1"=300'



NORTH



STORAGE MAP



TAX LOT NO. 824: 0.10 ACRE-FEET



STORAGE RIGHT

HWA SURVEYORS, ENGINEERS
& PLANNERS
HICKMAN, WILLIAMS & ASSOCIATES, INC
1201 NW WALL STREET, SUITE 100
BEND, OREGON 97701
PHONE: 541.389.9351 FAX: 541.388.5416

APPLICATION FOR STORAGE RIGHT TRANSFER
KC DEVELOPMENT GROUP, LLC

DATE: 5/20/2014

041125-WATER RIGHTS-OLDTAXLOTS.DWG