

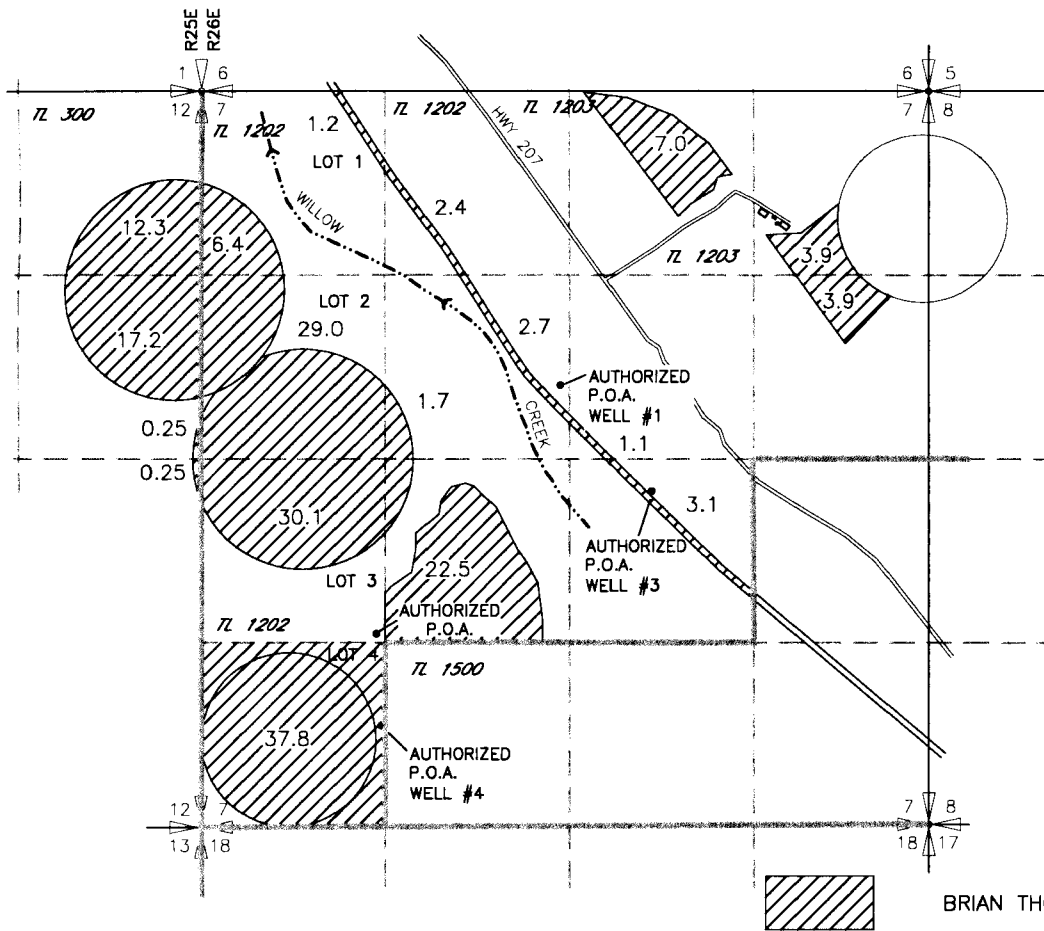
PERMIT AMENDMENT MAP  
T2S, R26E WM  
MORROW CO  
JUNE 27, 2013  
PERMIT G-12506

RECEIVED BY OWRD

JUL 24 2013

SALEM, OR

FROM



**RECEIVED**

JUL 31 2014

WATER RESOURCES DEPT  
SALEM, OREGON

AUTHORIZED POINTS OF APPROPRIATION  
ORIGINAL WELL 1330'N AND 1320'E FROM THE SW CORNER OF  
SEC 7

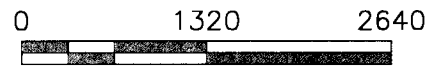
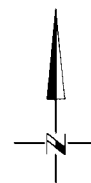
WELL #1  
LOCATED 2110'S AND 2630'W FROM THE NE CORNER OF SEC 7

WELL #3  
LOCATED 2870'S AND 1980'W FROM THE NE CORNER OF SEC 7

WELL #4  
LOCATED 725'N AND 1310'E FROM THE SW CORNER OF SEC 7

NOTE:  
THE PURPOSE OF THIS MAP IS TO IDENTIFY THE APPROXIMATE LOCATION  
OF THE WATER RIGHT. IT IS NOT INTENDED TO PROVIDE INFORMATION  
RELATIVE TO THE LOCATION OF PROPERTY OWNERSHIP BOUNDARY LINES.

DRAWING: F:\Project\30-08-016 - Porfily Water Rights Consulting\--00 Misc Engineering\Cad\THOMPSON\30-08-016 Thompson from 1-2013.dwg  
PRINTED BY: rwillard on 06/27/13 01:17 PM

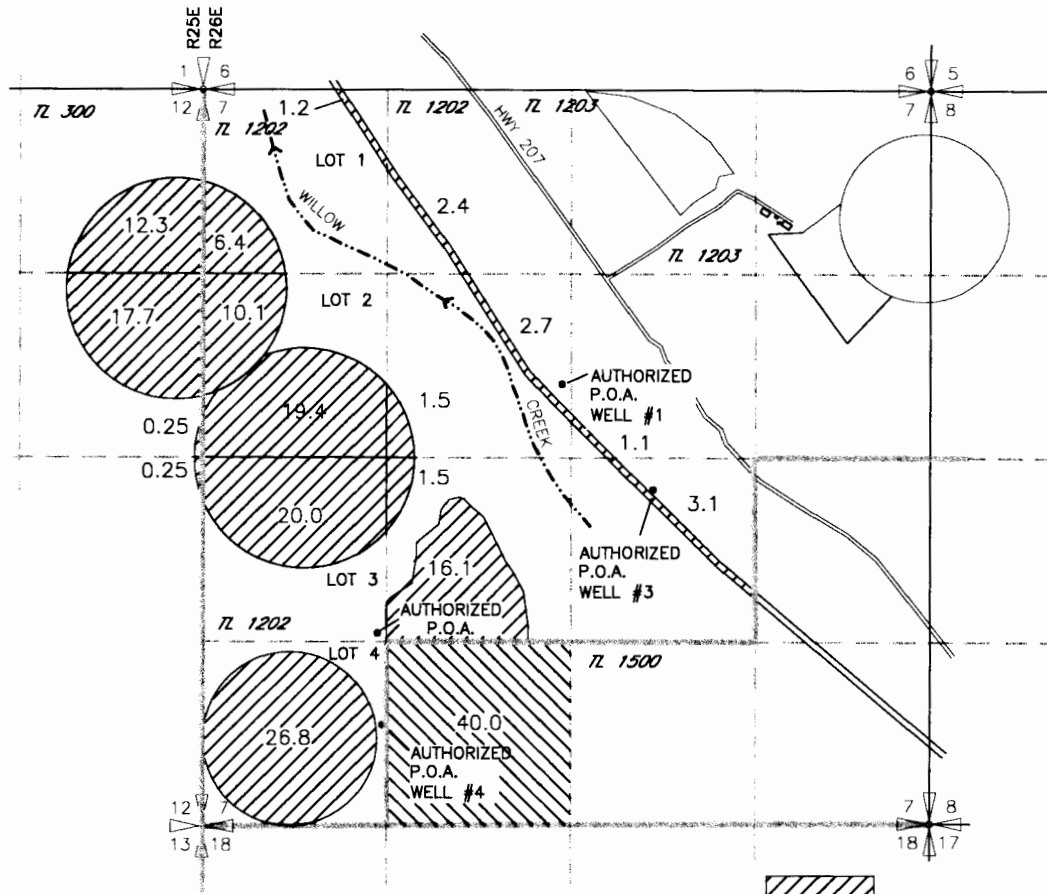


SCALE IN FEET

PERMIT AMENDMENT MAP  
T2S, R26E WM  
MORROW CO  
JUNE 27, 2013  
PERMIT G-12506

RECEIVED BY OWRD  
JUL 24 2013  
SALEM, OR



TO



**RECEIVED**

JUL 31 2014

WATER RESOURCES DEPT  
SALEM, OREGON

 BRIAN THOMPSON  
 BERNARD DAMON

AUTHORIZED POINTS OF APPROPRIATION  
ORIGINAL WELL 1330'N AND 1320'E FROM THE SW CORNER OF  
SEC 7

WELL #1  
LOCATED 2110'S AND 2630'W FROM THE NE CORNER OF SEC 7

WELL #3  
LOCATED 2870'S AND 1980'W FROM THE NE CORNER OF SEC 7

WELL #4  
LOCATED 725'N AND 1310'E FROM THE SW CORNER OF SEC 7

NOTE:  
THE PURPOSE OF THIS MAP IS TO IDENTIFY THE APPROXIMATE LOCATION  
OF THE WATER RIGHT. IT IS NOT INTENDED TO PROVIDE INFORMATION  
RELATIVE TO THE LOCATION OF PROPERTY OWNERSHIP BOUNDARY LINES.

DRAWING: F:\Project\30-08-016 - Porifly Water Rights Consulting\00 Misc Engineering\Cad\THOMPSON\30-08-016 Thompson TO 1-2013.dwg  
PRINTED BY: rwillard on 06/27/13 01:15 PM

