

T14S.001

RECEIVED

T.16,17S.,R.11E.,W.M.

RECEIVED BY OWRD

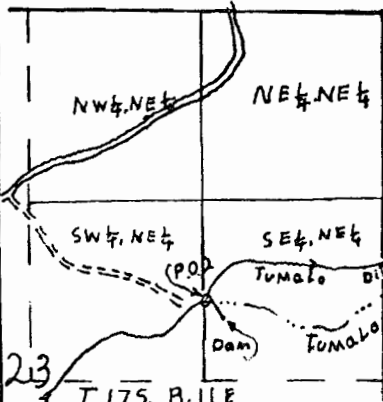
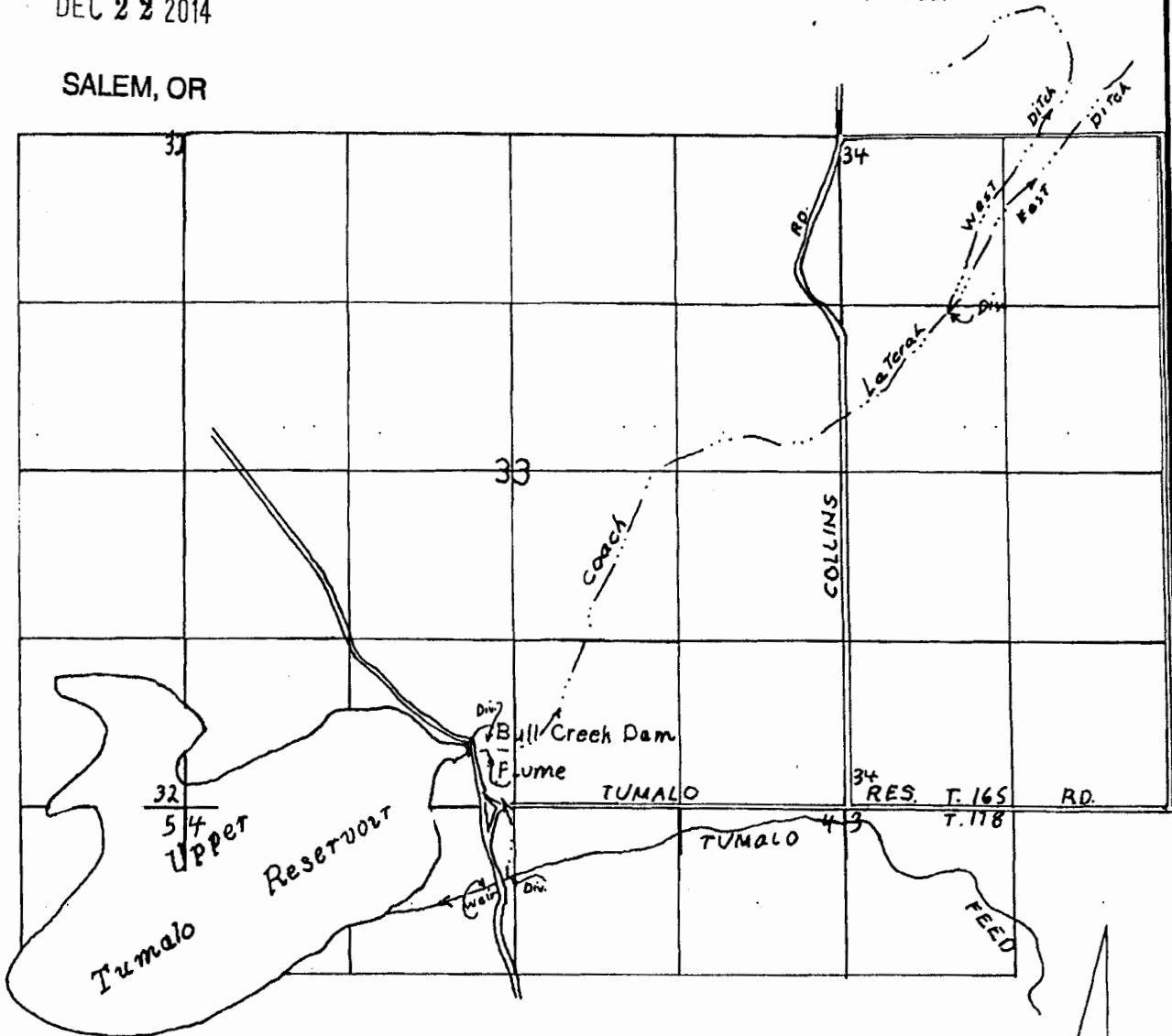
off

OCT 05 1998

WATER RESOURCES DEPT
SALEM, OREGON

DEC 22 2014

SALEM, OR



FINAL PROOF SURVEY UNDER

Application No. R-37238 Permit No. R-2743
IN NAME OF

TUMALO IRRIGATION DISTRICT

Surveyed AUG.26. 1998., by R.M.SUTTERFIELD

DIV. PT. 2080'S & 1310' W FROM
NE COR. OF SEC. 23.

7 1/2 quad - Tumalo Dam

Date 9-16-98

by R.M.S.

T14S.001

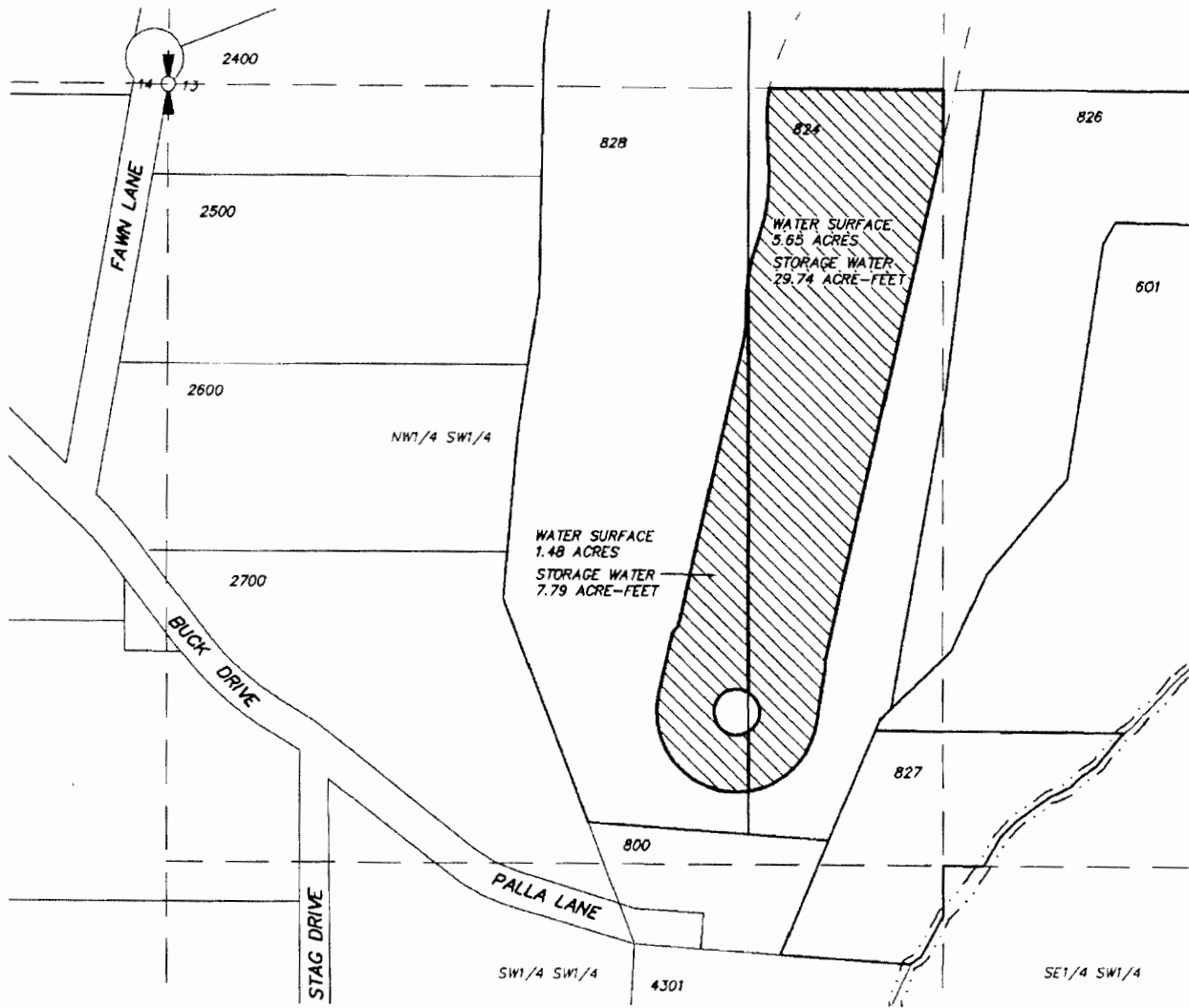
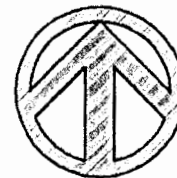
RECEIVED BY OWRD SECTION 13 T17S R11E W.M.

DEC 22 2014

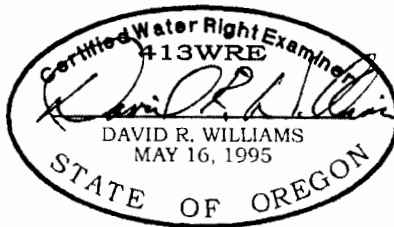
NW 1/4 OF THE SW 1/4

SALEM, OR

SCALE: 1"=300'



STORAGE MAP



TAX LOT NO. 828: 7.70 ACRE-FEET
 TAX LOT NO. 824: 29.39 ACRE-FEET

12/12/14



STORAGE RIGHT

HWA SURVEYORS, ENGINEERS & PLANNERS
 HICKMAN, WILLIAMS & ASSOCIATES, INC.
 1201 NW WALL STREET, SUITE 100
 BEND, OREGON 97701
 PHONE: 541.389.9351 FAX: 541.388.5416

APPLICATION FOR STORAGE RIGHT TRANSFER
 KC DEVELOPMENT GROUP, LLC

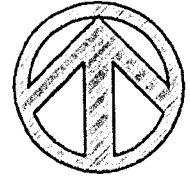
DATE: 12/11/2014

041125-WATER RIGHTS.DWG

T145.001

RECEIVED BY OWRD

DESCHUTES COUNTY
SECTION 13 T17S R11E W.M.



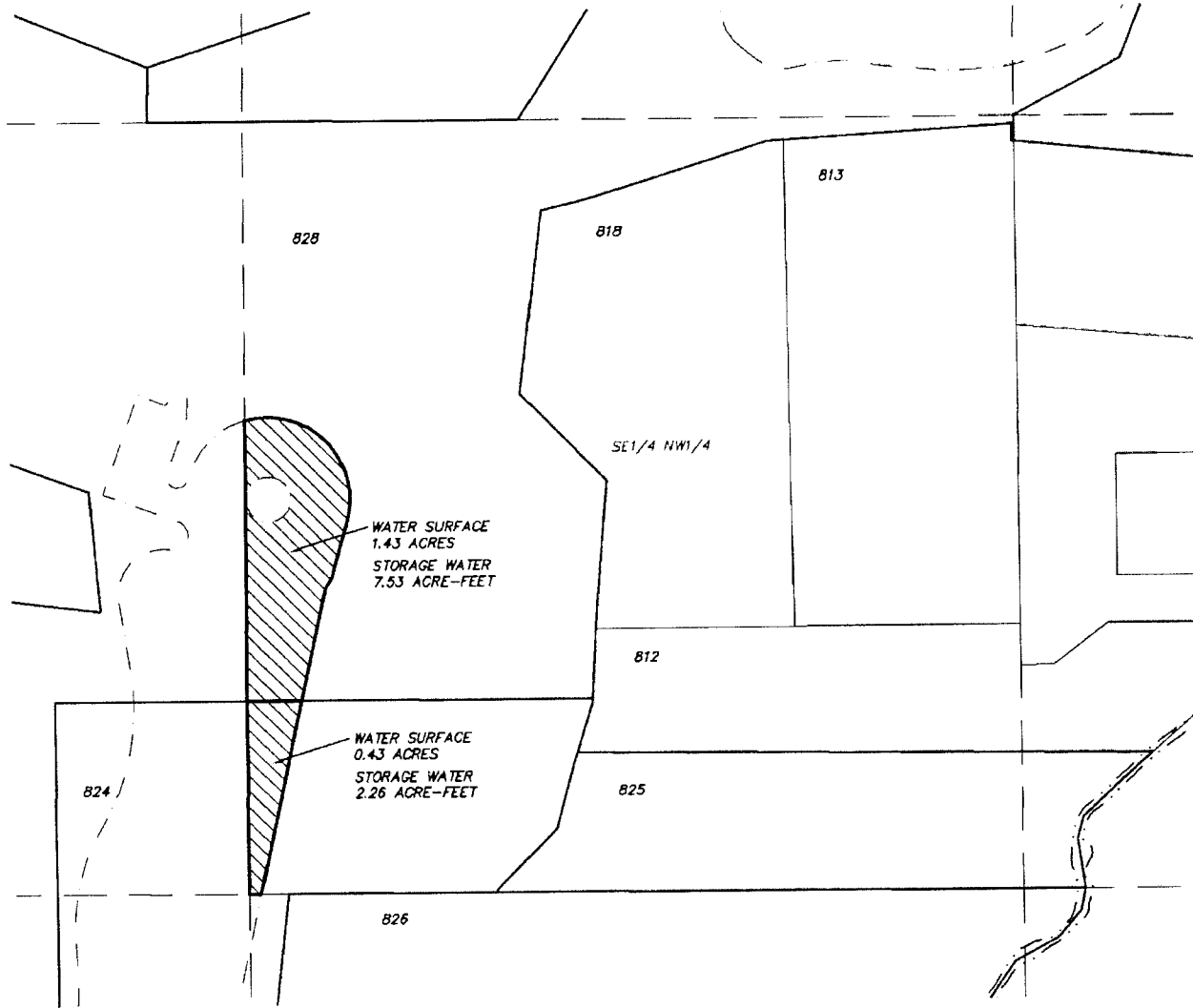
NORTH

DEC 22 2014

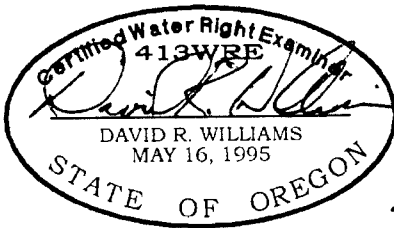
SE 1/4 OF THE NW 1/4

SCALE: 1"=300'

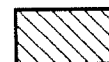
SALEM, OR



STORAGE MAP



TAX LOT NO. 828: 7.44 ACRE-FEET
TAX LOT NO. 824: 2.23 ACRE-FEET



STORAGE RIGHT

12/12/14

HWA SURVEYORS, ENGINEERS
& PLANNERS
HICKMAN, WILLIAMS & ASSOCIATES, INC
1201 NW WALL STREET, SUITE 100
BEND, OREGON 97701
PHONE: 541.389.9351 FAX: 541.388.5416

APPLICATION FOR STORAGE RIGHT TRANSFER
KC DEVELOPMENT GROUP, LLC

DATE: 12/11/2014

041125-WATER RIGHTS.DWG

T 145.001

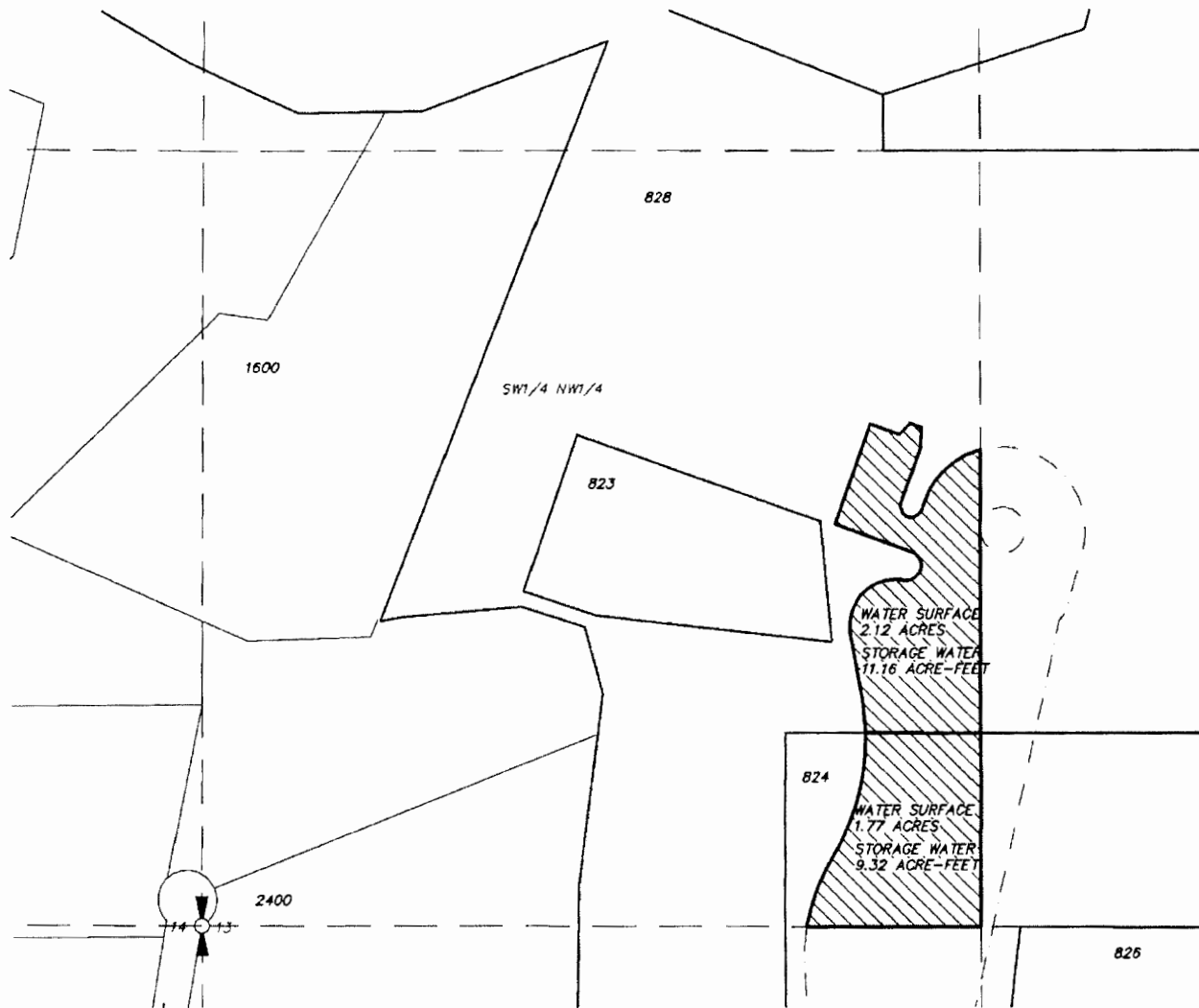
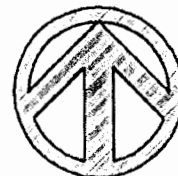
RECEIVED BY OWRD DESCHUTES COUNTY SECTION 13 T17S R11E W.M.

DEC 22 2014

SW 1/4 OF THE NW 1/4

SALEM, OR

SCALE: 1"=300'



STORAGE MAP



12/12/14

TAX LOT NO. 828: 11.03 ACRE-FEET
 TAX LOT NO. 824: 9.21 ACRE-FEET



STORAGE RIGHT

HWA SURVEYORS, ENGINEERS & PLANNERS
 HICKMAN, WILLIAMS & ASSOCIATES, INC.
 1201 NW WALL STREET, SUITE 100
 BEND, OREGON 97701
 PHONE: 541.389.9351 FAX: 541.388.5416

APPLICATION FOR STORAGE RIGHT TRANSFER
 KC DEVELOPMENT GROUP, LLC

DATE: 12/11/2014

041125-WATER RIGHTS.DWG

T14S,001

DESCHUTES COUNTY
SECTION 13 T17S R11E W.M.



NORTH

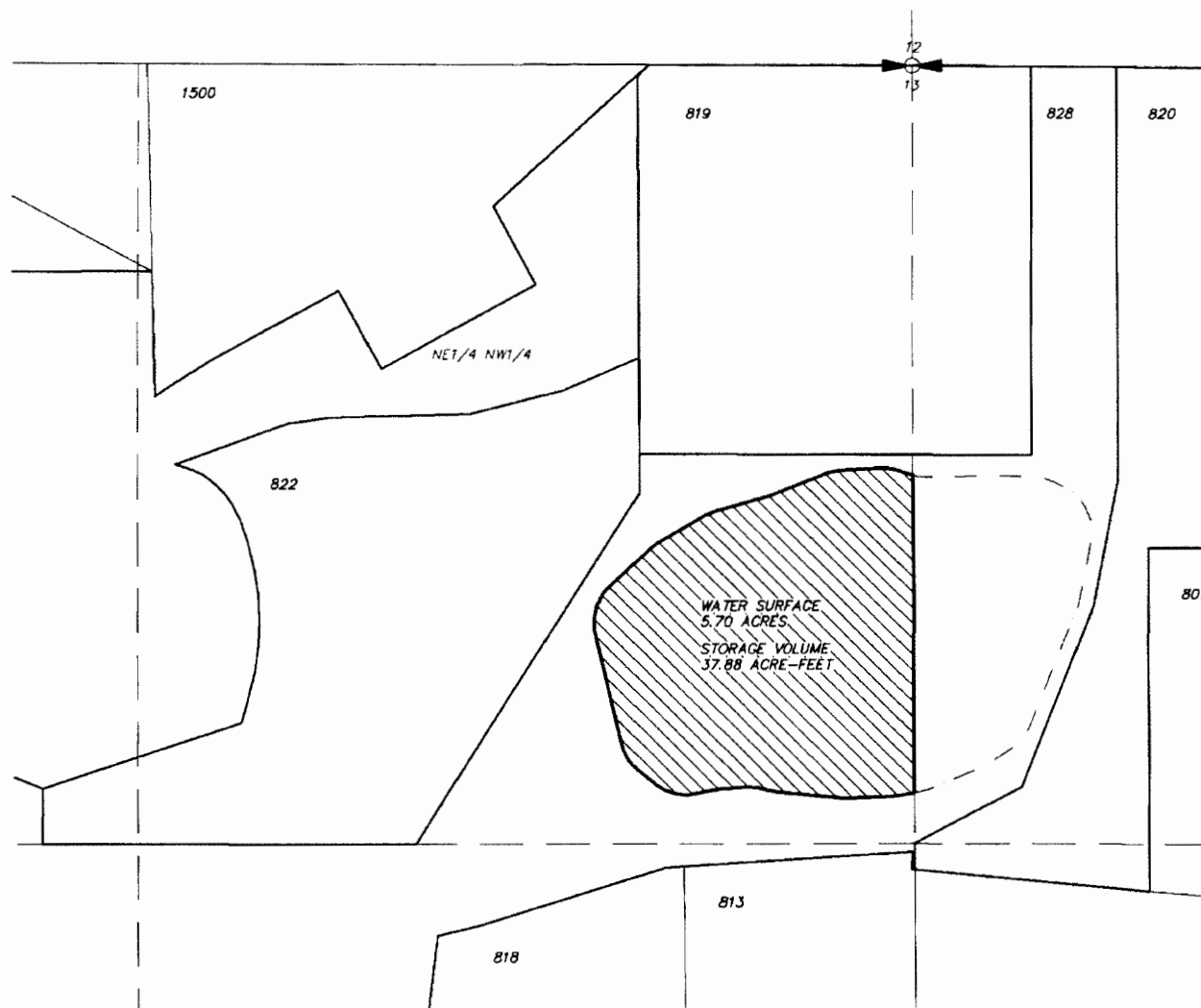
RECEIVED BY OWRD

DEC 22 2014

NE 1/4 OF THE NW 1/4

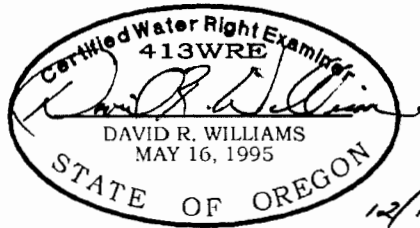
SCALE: 1"=300'

SALEM, OR



STORAGE MAP

TAX LOT NO. 828: 27.23 ACRE-FEET



STORAGE RIGHT

HWA SURVEYORS, ENGINEERS
& PLANNERS
HICKMAN, WILLIAMS & ASSOCIATES, INC.
1201 NW WALL STREET, SUITE 100
BEND, OREGON 97701
PHONE: 541.389.9351 FAX: 541.388.5416

APPLICATION FOR STORAGE RIGHT TRANSFER
KC DEVELOPMENT GROUP, LLC

DATE: 12/11/2014

041125-WATER RIGHTS.DWG

T14S.001

RECEIVED BY OWRD

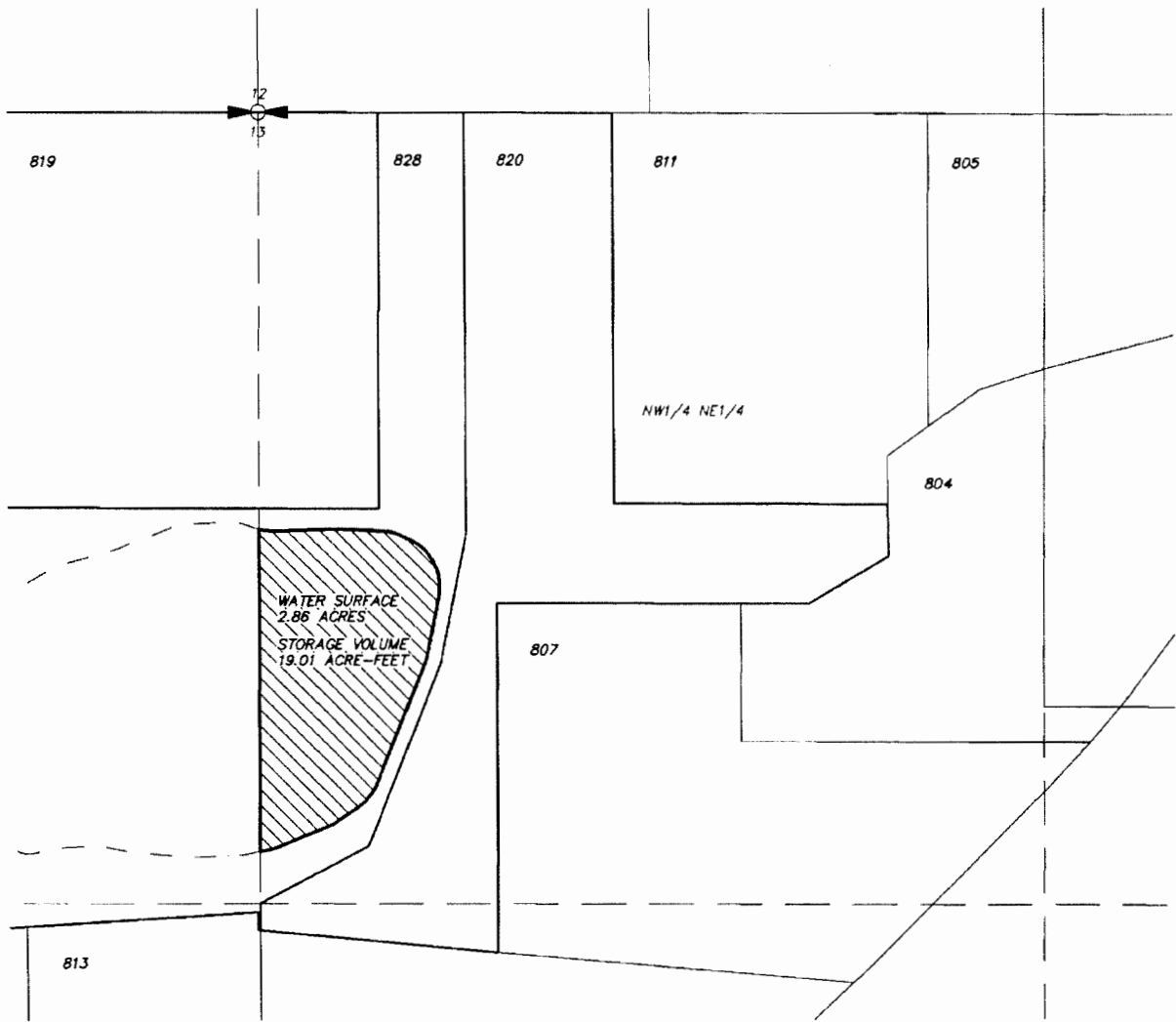
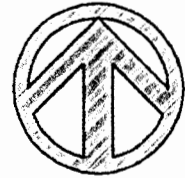
DEC 22 2014

SALEM, OR

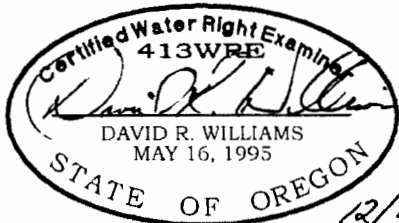
DESCHUTES COUNTY
SECTION 13 T17S R11E W.M.

NW 1/4 OF THE NE 1/4

SCALE: 1"=300'



STORAGE MAP



TAX LOT NO. 828: 13.67 ACRE-FEET



STORAGE RIGHT

HWA SURVEYORS, ENGINEERS
& PLANNERS
HICKMAN, WILLIAMS & ASSOCIATES, INC.
1201 NW WALL STREET, SUITE 100
BEND, OREGON 97701
PHONE: 541.389.9351 FAX: 541.388.5416

APPLICATION FOR STORAGE RIGHT TRANSFER
KC DEVELOPMENT GROUP, LLC

DATE: 12/11/2014

041125-WATER RIGHTS.DWG

T14S, 001

RECEIVED BY OWRD

DEC 22 2014

SALEM, OR

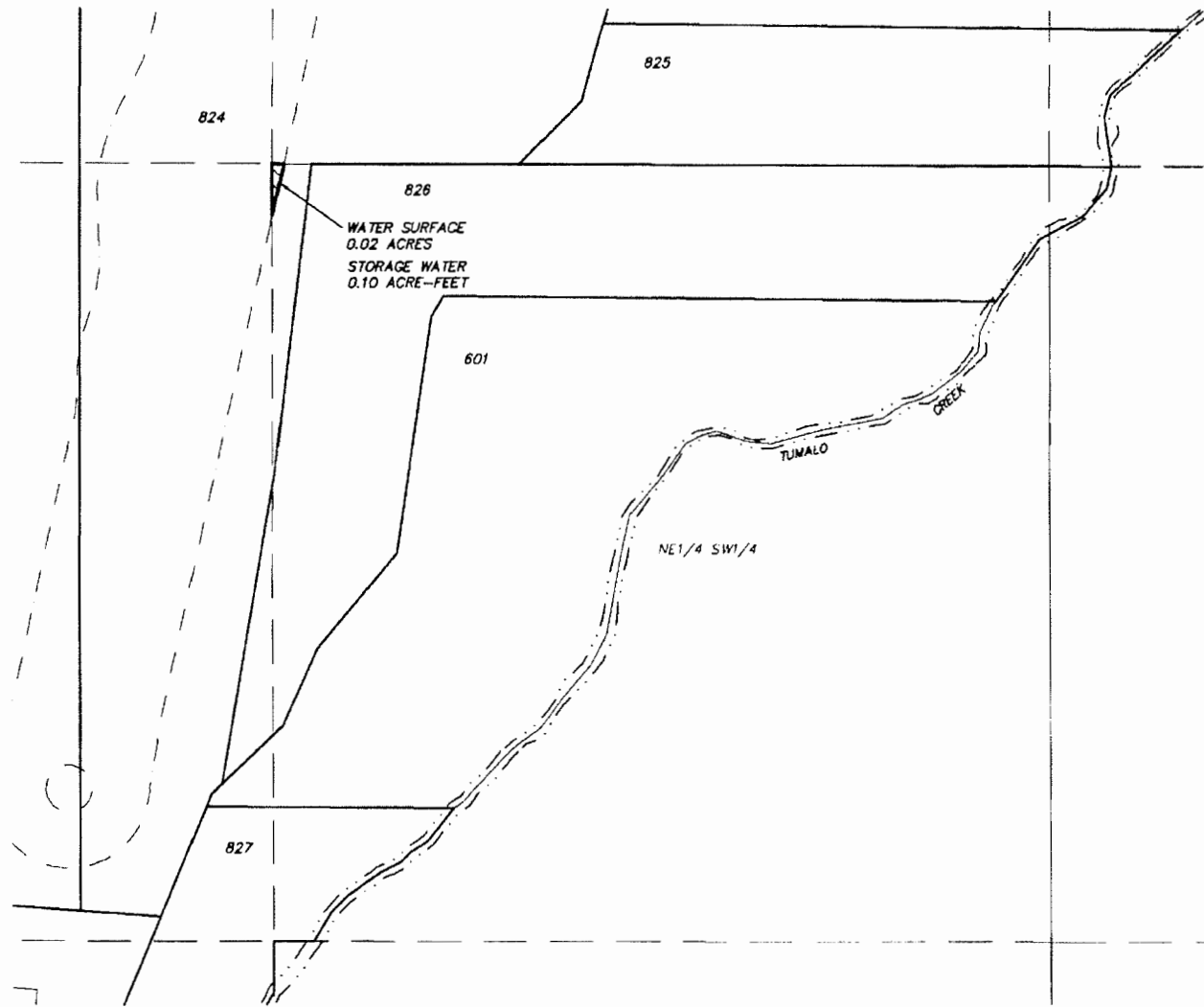
DESCHUTES COUNTY
SECTION 13 T17S R11E W.M.

NE 1/4 OF THE SW 1/4

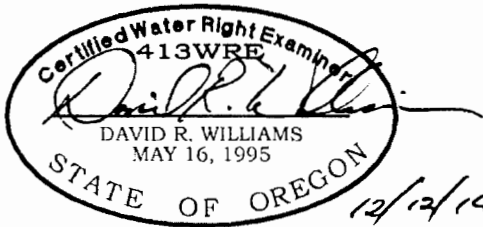
SCALE: 1"=300'



NORTH



STORAGE MAP



TAX LOT NO. 824: 0.10 ACRE-FEET



STORAGE RIGHT

HWA SURVEYORS, ENGINEERS
& PLANNERS
HICKMAN, WILLIAMS & ASSOCIATES, INC.
1201 NW WALL STREET, SUITE 100
BEND, OREGON 97701
PHONE: 541.389.9351 FAX: 541.388.5416

APPLICATION FOR STORAGE RIGHT TRANSFER
KC DEVELOPMENT GROUP, LLC

DATE: 12/11/2014

041125-WATER RIGHTS.DWG