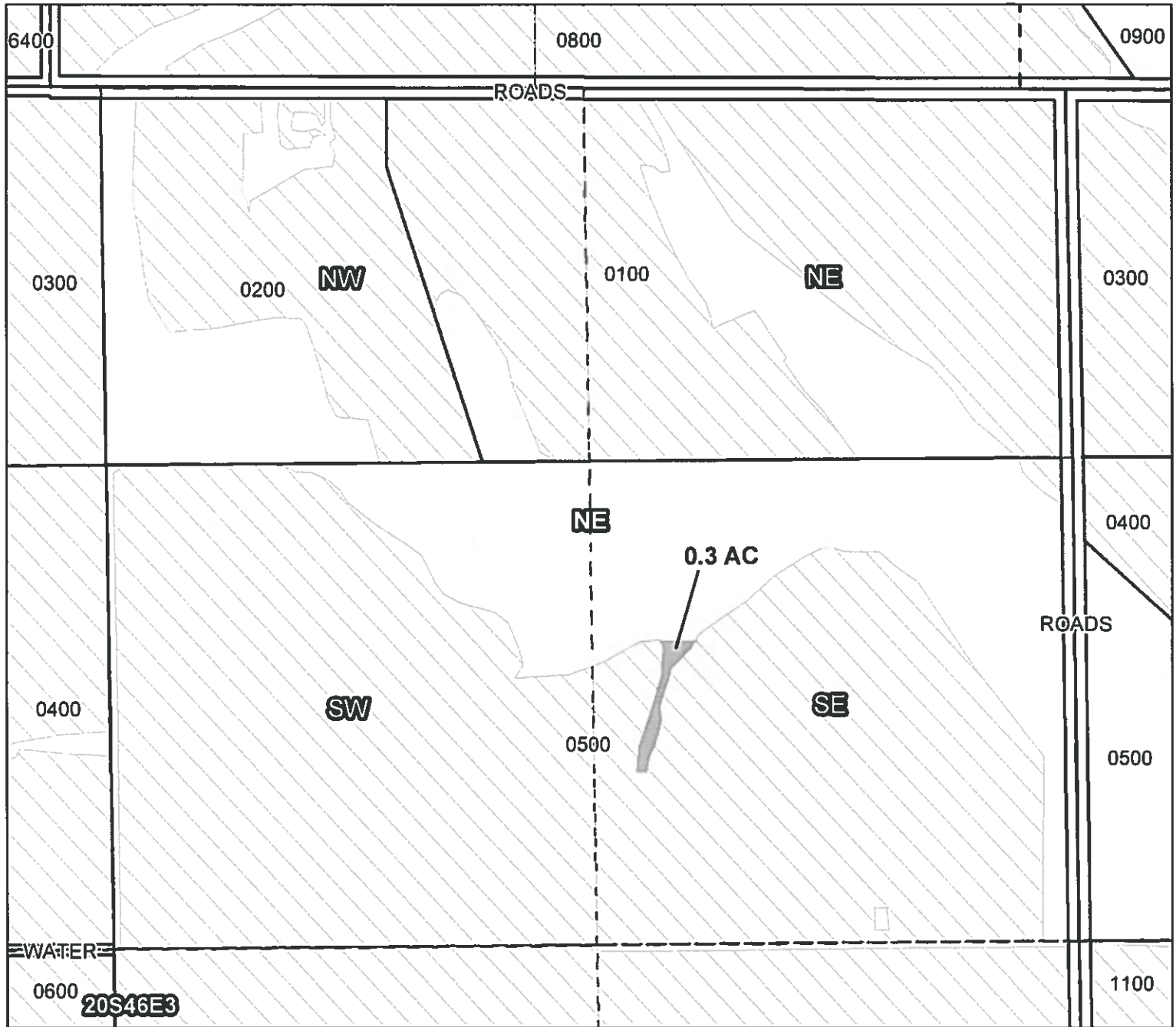
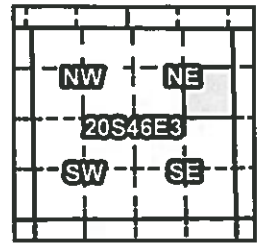


Owyhee Irrigation District

2014 District Transfer Application "On" Map

Certificates: 75691
for Froerer Family



Taxlot 0500, 20S46E3SENE: 0.3 ac. On, 25.1 Acres Total

RECEIVED BY OWRD

JAN 02 2015

SALEM, OR

- Point of Diversion
- ▬ Canals
- ▭ Taxlots
- Transfer
- ▭ Cert 75691



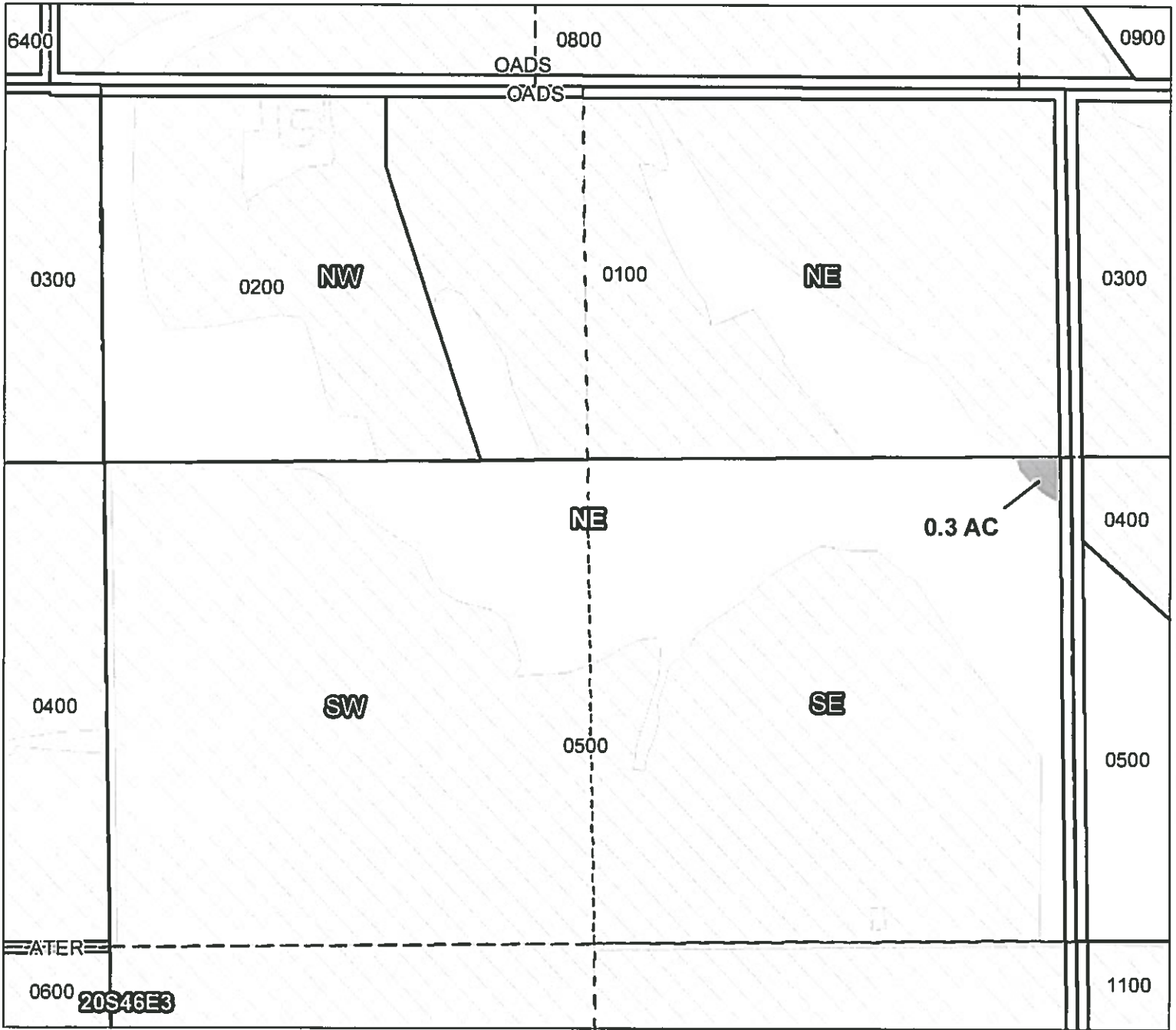
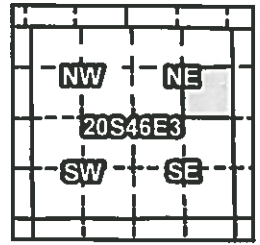
1 inch = 400 feet

Prepared by Geo-Spatial Solutions Inc. | December 2014

Owyhee Irrigation District

2014 District Transfer Application "Off" Map

Certificates: 75691
for Froerer Family



Taxlot 0500, 20S46E3SENE: 0.3 ac. Off, 24.8 Acres Remaining

- Point of Diversion
- Canals
- Taxlots
- Transfer
- Cert 75691

RECEIVED BY OWRD

JAN 02 2015

SALEM, OR



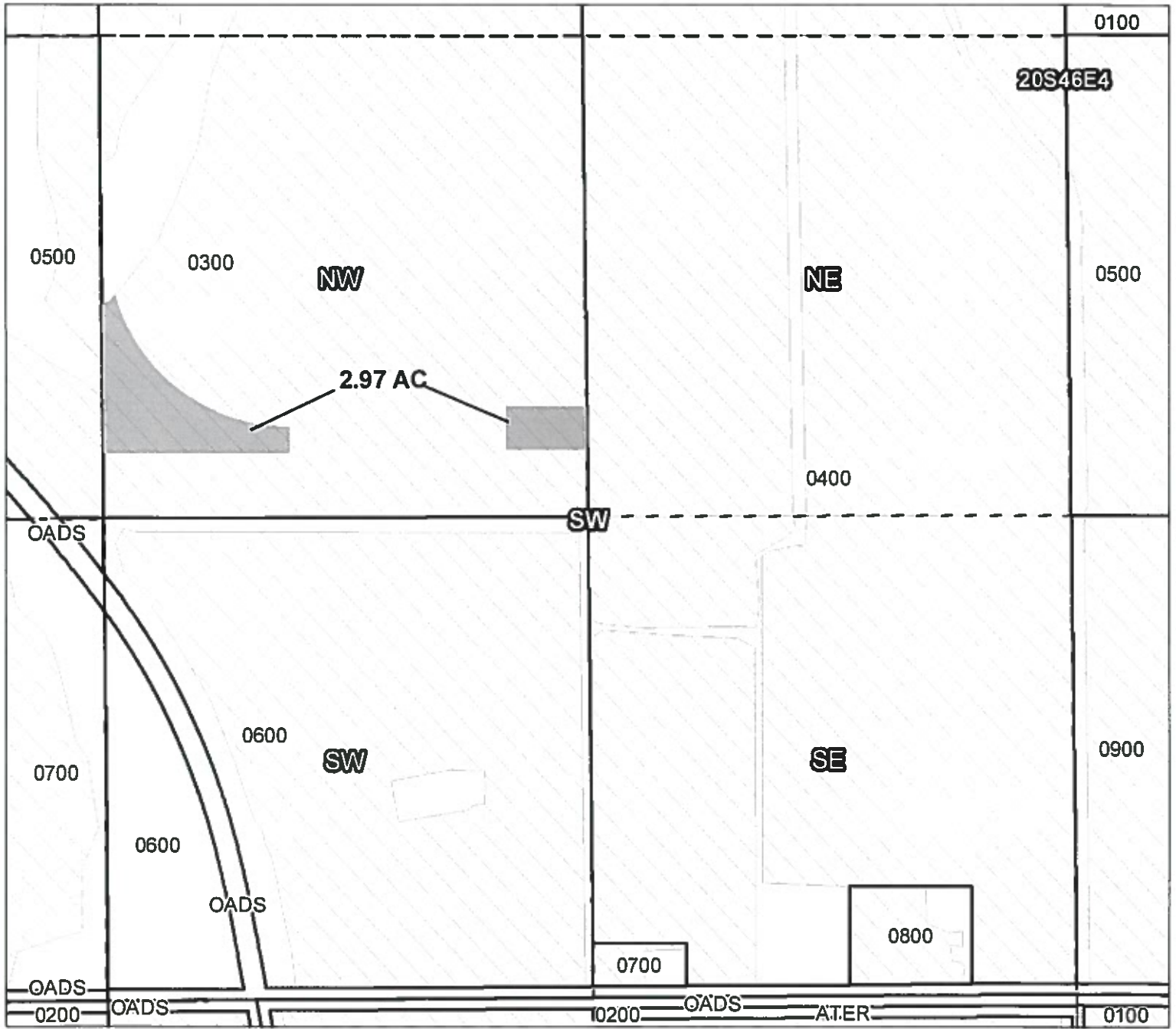
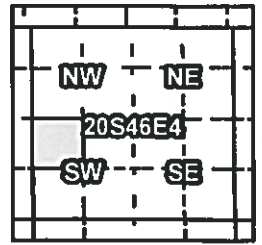
1 inch = 400 feet

Prepared by Geo-Spatial Solutions Inc. | December 2014

Owyhee Irrigation District

2014 District Transfer Application "Off" Map

Certificates: 75691
for Garrett Brown



Taxlot 0300, 20S46E4NWSW: 2.97 ac. Off, 32.93 Acres Remaining

RECEIVED BY OWRD

JAN 02 2015

SALEM, OR



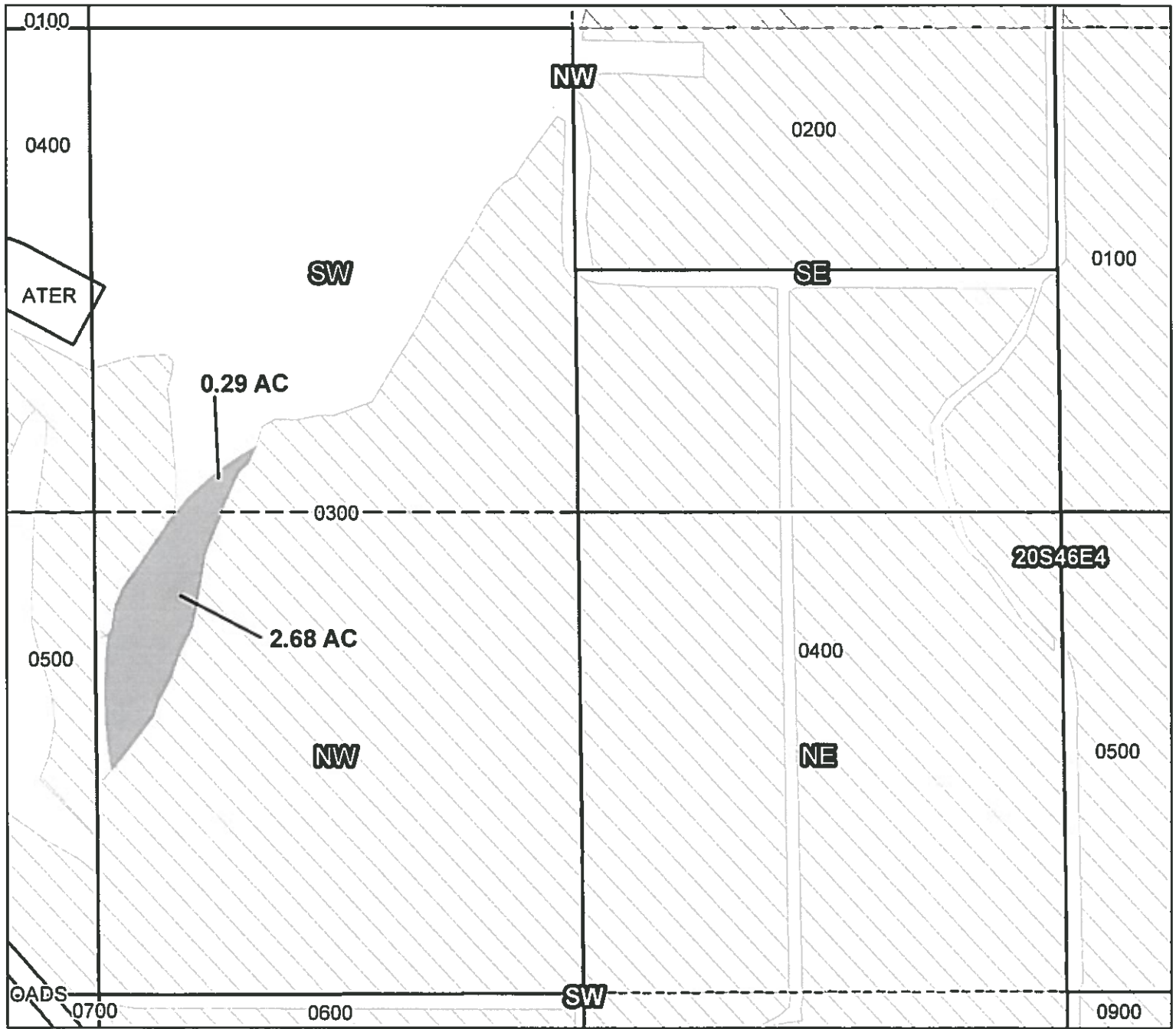
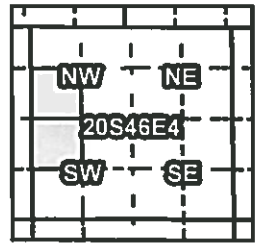
1 inch = 400 feet

Prepared by Geo-Spatial Solutions Inc. | December 2014

Owyhee Irrigation District

2014 District Transfer Application "On" Map

Certificates: 75691
for Garrett Brown



Taxlot 0300, 20S46E4NWSW: 2.68 ac. On, 35.61 Acres Total
Taxlot 0300, 20S46E4SWNW: 0.29 ac. On, 13.59 Acres Total

RECEIVED BY OWRD

JAN 02 2015

SALEM, OR

Prepared by Geo-Spatial Solutions Inc. | December 2014

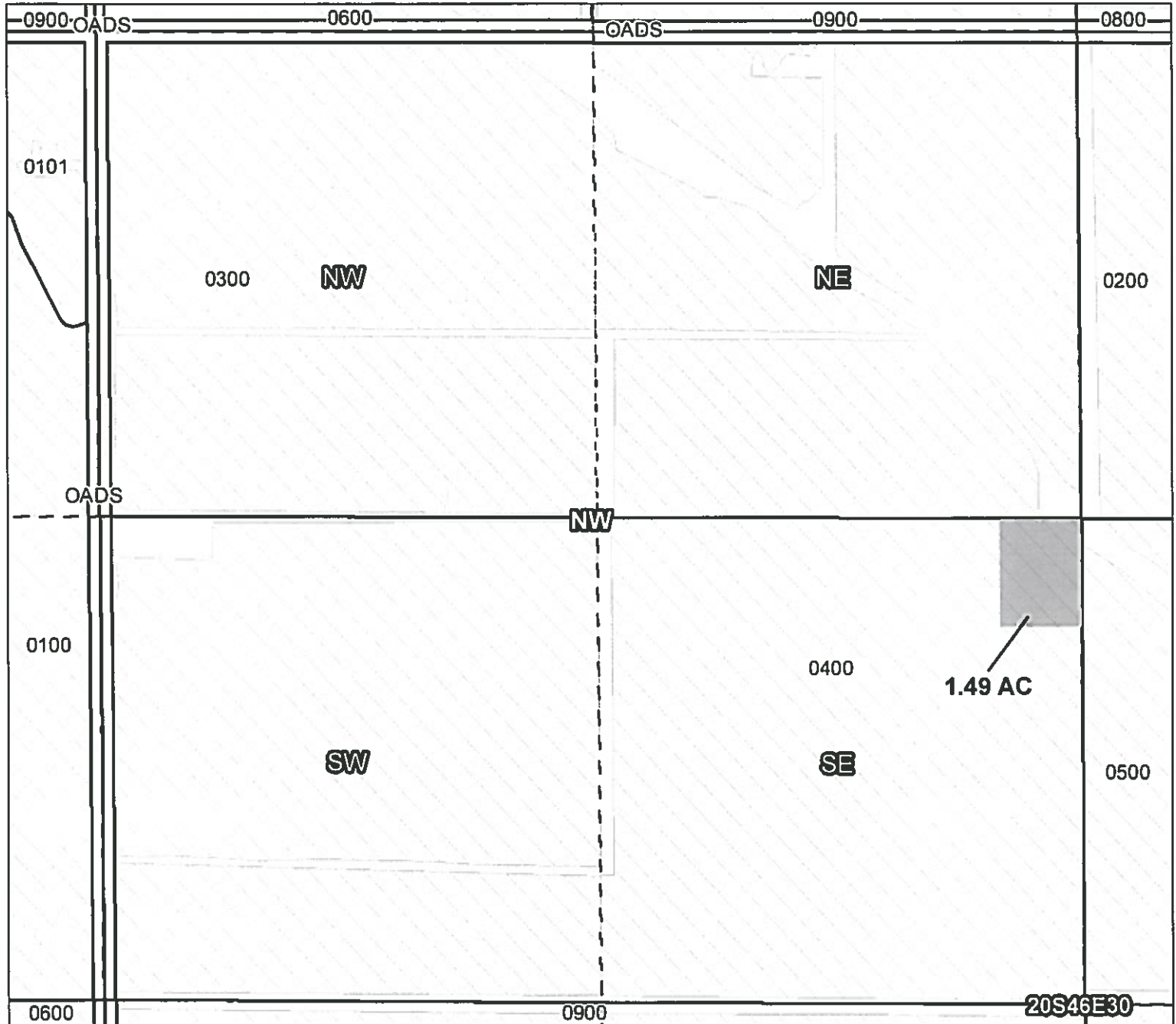
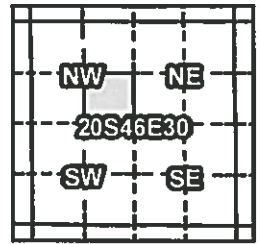


1 inch = 400 feet

Owyhee Irrigation District

2014 District Transfer Application "Off" Map

Certificates: 75691
for Garner Trust



Taxlot 0400, 20S46E30SENW: 1.49 ac. Off, 37.41 Acres Remaining

RECEIVED BY OWRD

JAN 02 2015

SALEM, OR

- Point of Diversion
- Canals
- Taxlots
- Transfer
- Cert 75691



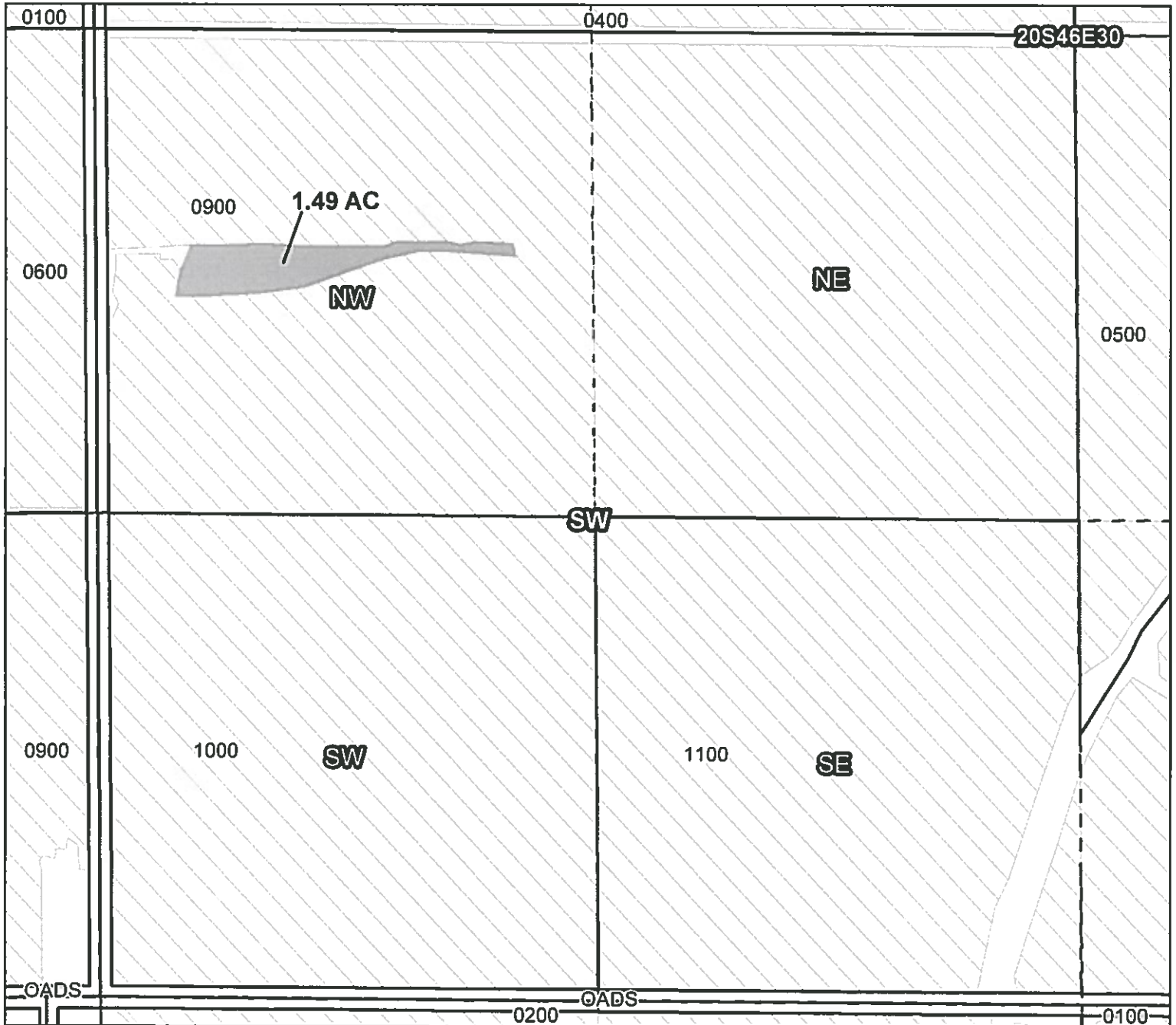
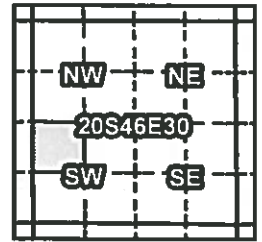
1 inch = 400 feet

Prepared by Geo-Spatial Solutions Inc. | November 2014






Owyhee Irrigation District

2014 District Transfer Application "On" Map

Certificates: 75691
for Garner Trust



Taxlot 0900, 20S46E30NWSW: 1.49 ac. On, 38.19 Acres Total

-  Point of Diversion
-  Canals
-  Taxlots
-  Transfer
-  Cert 75691

RECEIVED BY OWRD

JAN 02 2015

SALEM, OR



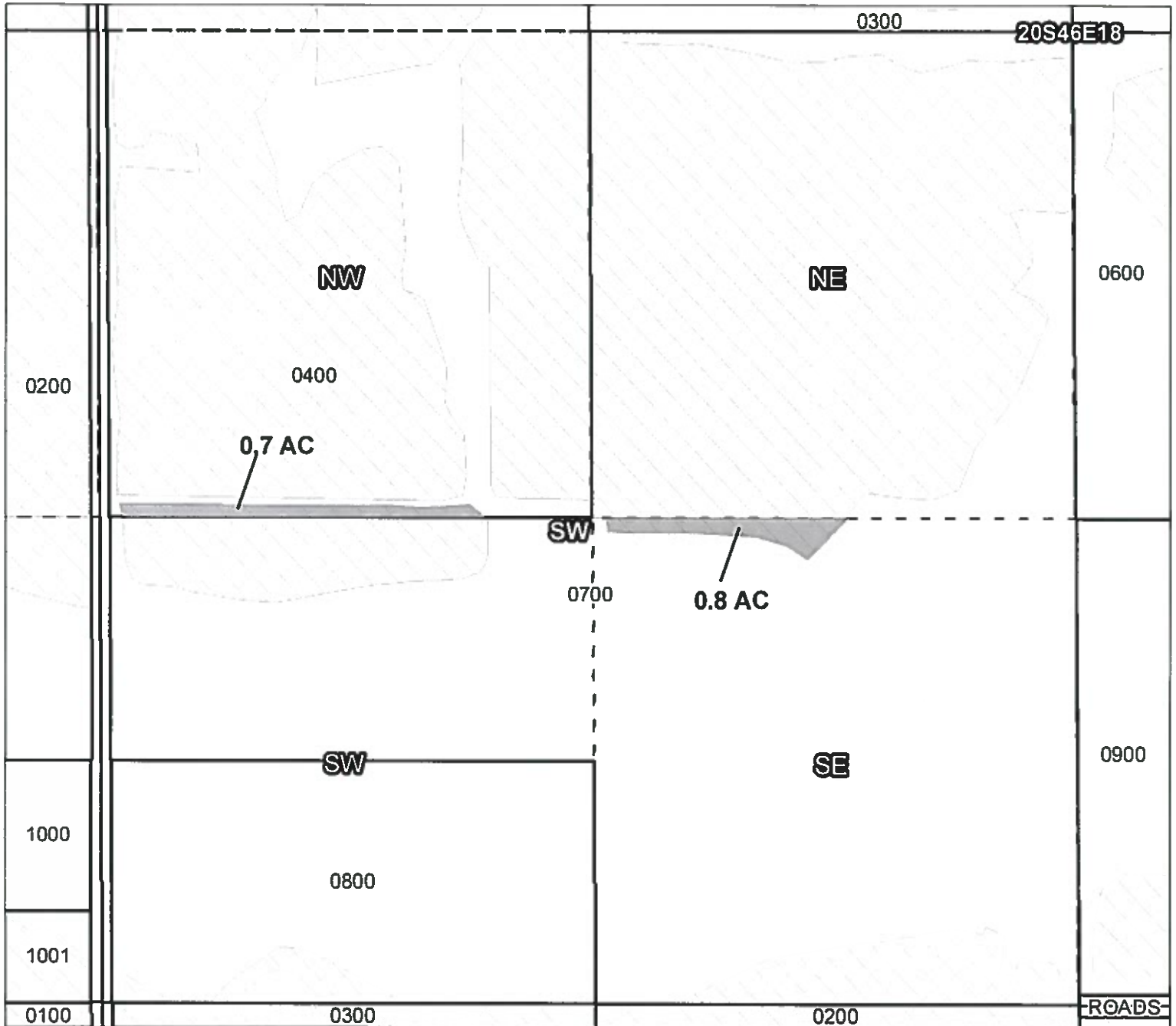
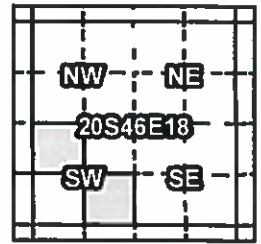
1 inch = 400 feet

Prepared by Geo-Spatial Solutions Inc. | December 2014

Owyhee Irrigation District

2014 District Transfer Application "Off" Map

Certificates: 75691
for Todd Tullett








Taxlot 0700, 20S46E18SESW: 0.8 ac. Off, 3.4 Acres Remaining
Taxlot 0400, 20S46E18NWSW: 0.7 ac. Off, 5.4 Acres Remaining

RECEIVED BY OWRD

JAN 02 2015

SALEM, OR

-  Point of Diversion
-  Canals
-  Taxlots
-  Transfer
-  Cert 75691



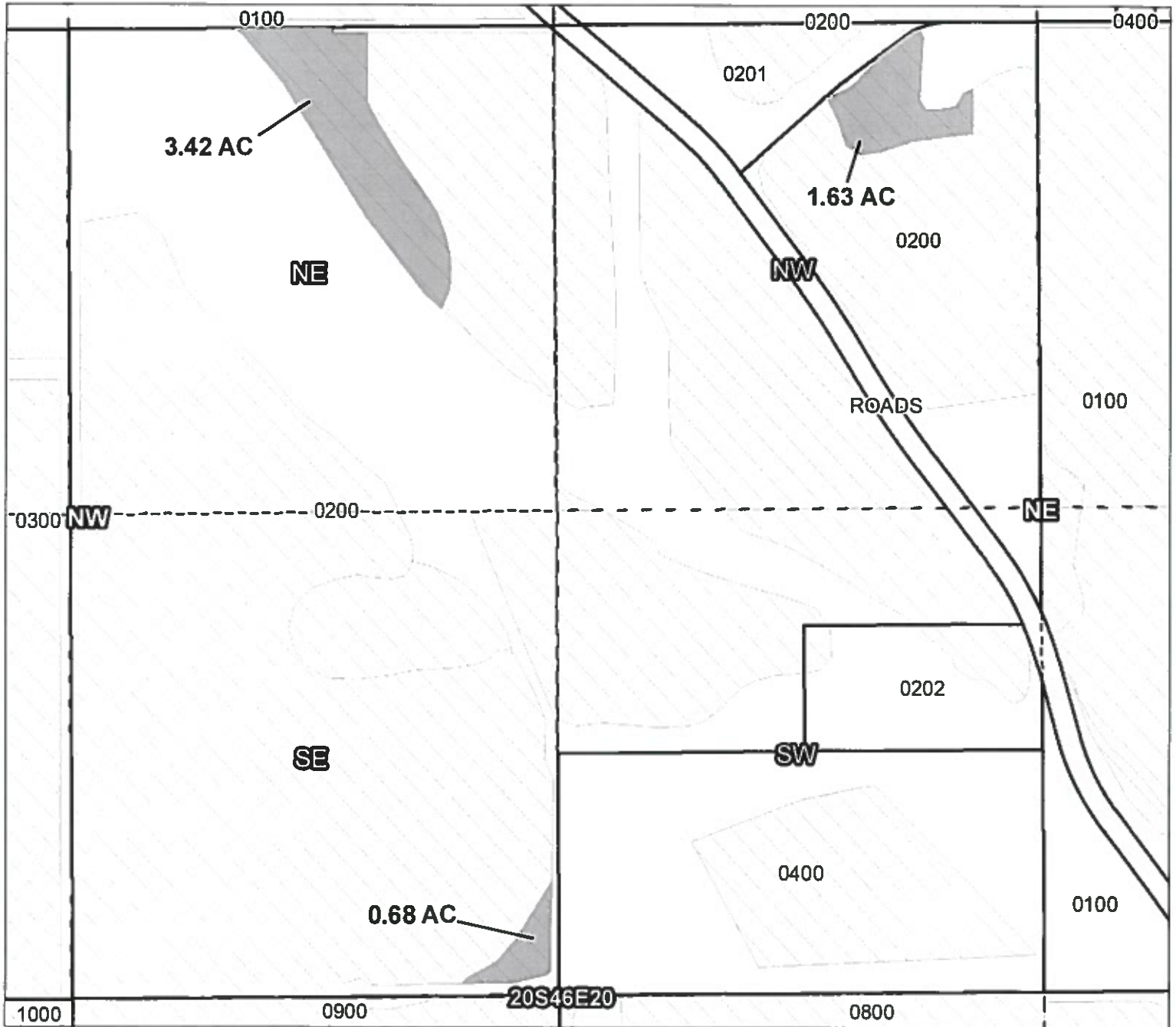
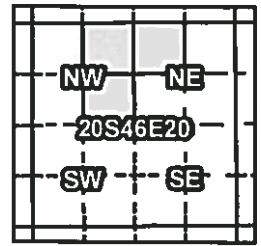
1 inch = 400 feet

Prepared by Geo-Spatial Solutions Inc. | December 2014

Owyhee Irrigation District

2014 District Transfer Application "Off" Map

Certificates: 75691
for Todd Tullett



Taxlot 0200, 20S46E20NWNE: 1.63 ac. Off, 25.27 Acres Remaining
 Taxlot 0200, 20S46E20NENW: 3.42 ac. Off, 16.88 Acres Remaining
 Taxlot 0200, 20S46E20SENE: 0.68 ac. Off, 36.22 Acres Remaining

- Point of Diversion
- Canals
- Taxlots
- Transfer
- Cert 75691

RECEIVED BY OWRD

JAN 02 2015

SALEM, OR



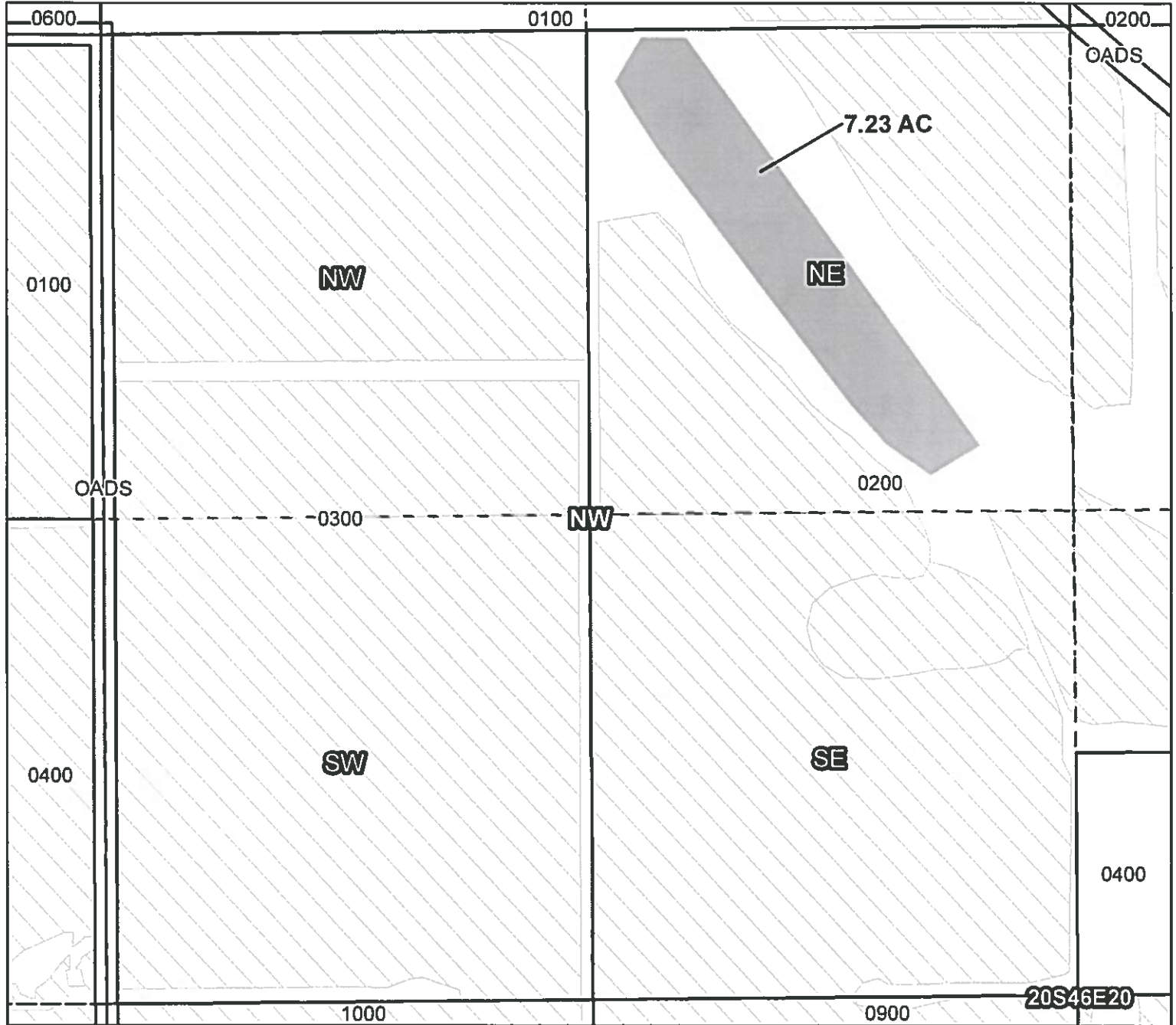
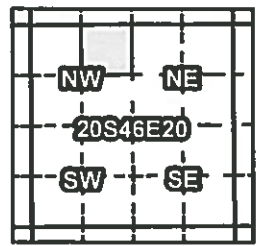
1 inch = 400 feet

Prepared by Geo-Spatial Solutions Inc. | December 2014

Owyhee Irrigation District

2014 District Transfer Application "On" Map

Certificates: 75691
for Todd Tullett



Taxlot 0200, 20S46E20NENW: 7.23 ac. On, 24.11 Acres Total

RECEIVED BY OWRD

JAN 02 2015

SALEM, OR

○ Point of Diversion

TTTT Canals

□ Taxlots

■ Transfer

▨ Cert 75691



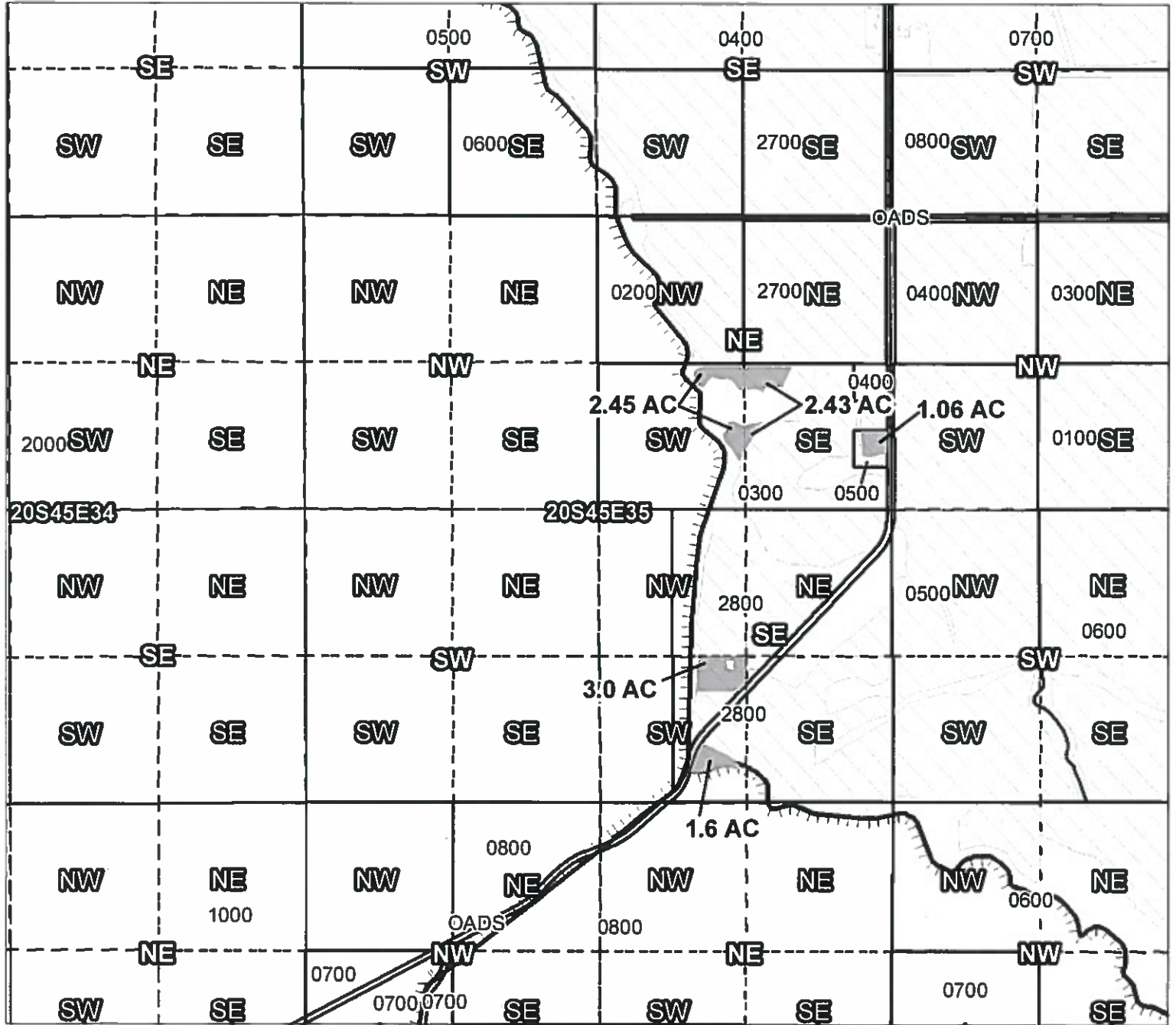
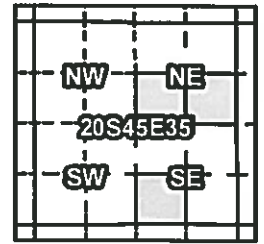
1 inch = 400 feet

Prepared by Geo-Spatial Solutions Inc. | December 2014

Owyhee Irrigation District

2014 District Transfer Application "Off" Map

Certificates: 75691
for Kenneth Hatfield



Taxlot 2800, 20S45E35SWSE: 3 ac. Off, 4.9 Acres Remaining
 Taxlot 2800, 20S45E35SWSE: 1.6 ac. Off, 4.9 Acres Remaining
 Taxlot 0300, 20S45E35SWNE: 2.45 ac. Off, 0.85 Acres Remaining
 Taxlot 0300, 20S45E35SENE: 2.43 ac. Off, 26.07 Acres Remaining
 Taxlot 0500, 20S45E35SENE: 1.06 ac. Off, 25.01 Acres Remaining

- Point of Diversion
- TTT Canals
- Taxlots
- Transfer
- Cert 75691

RECEIVED BY OWRD



JAN 02 2015

1 inch = 1,320 feet

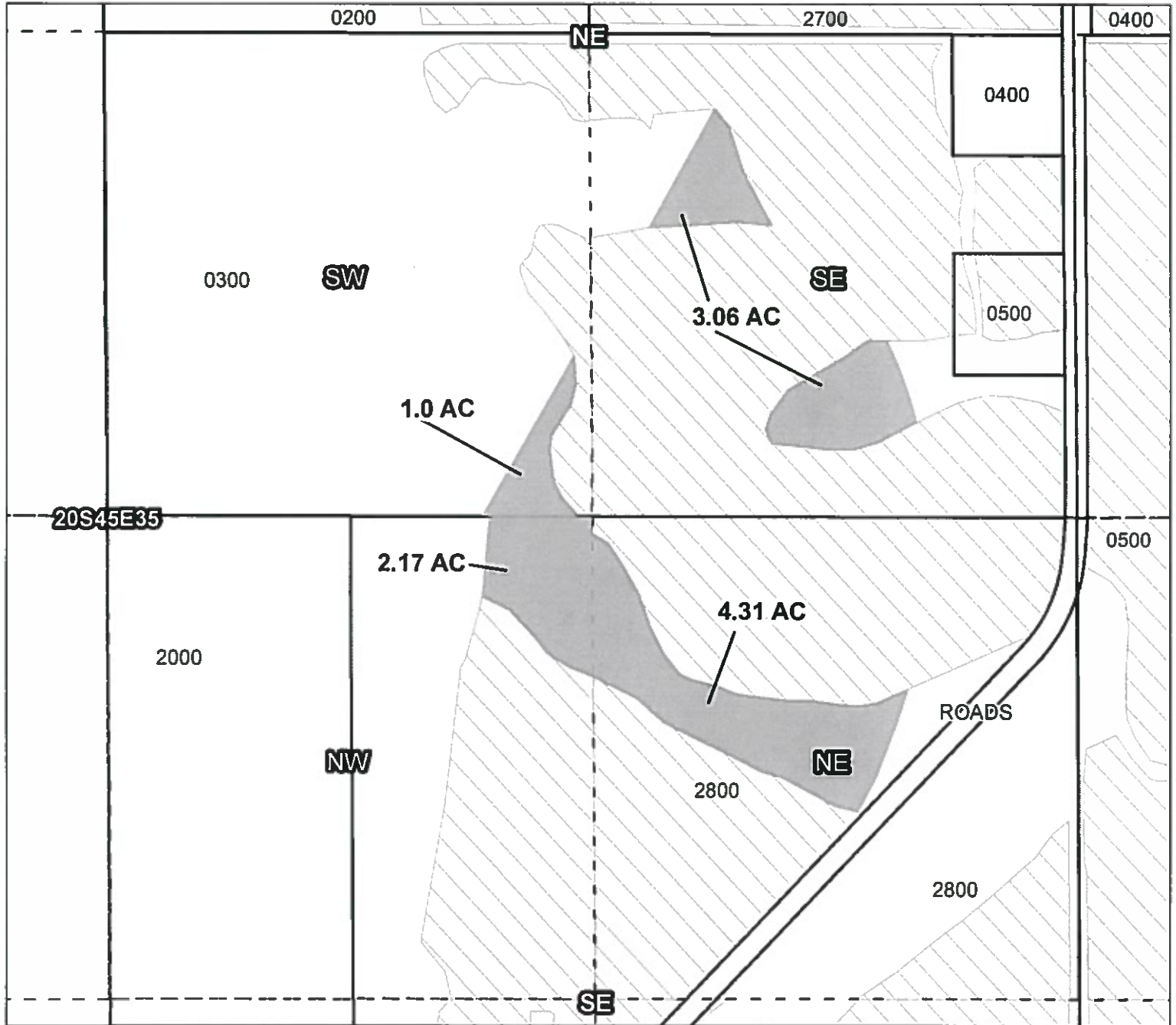
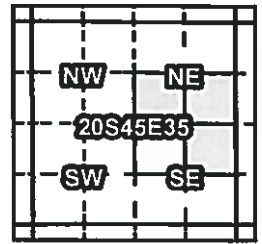
Prepared by Geo-Spatial Solutions Inc. | December 2014

SALEM, OR

Owyhee Irrigation District

2014 District Transfer Application "On" Map

Certificates: 75691
for Kenneth Hatfield



Taxlot 2800, 20S45E35NESE: 4.31 ac. On, 27.31 Acres Total
 Taxlot 2800, 20S45E35NWSE: 2.17 ac. On, 11.27 Acres Total
 Taxlot 0300, 20S45E35SWNE: 1.0 ac. On, 1.85 Acres Total
 Taxlot 0300, 20S45E35SENE: 3.06 ac. On, 28.07 Acres Total

- Point of Diversion
- Canals
- Taxlots
- Transfer
- Cert 75691

RECEIVED BY OWRD



JAN 02 2015

SALEM, OR

1 inch = 400 feet

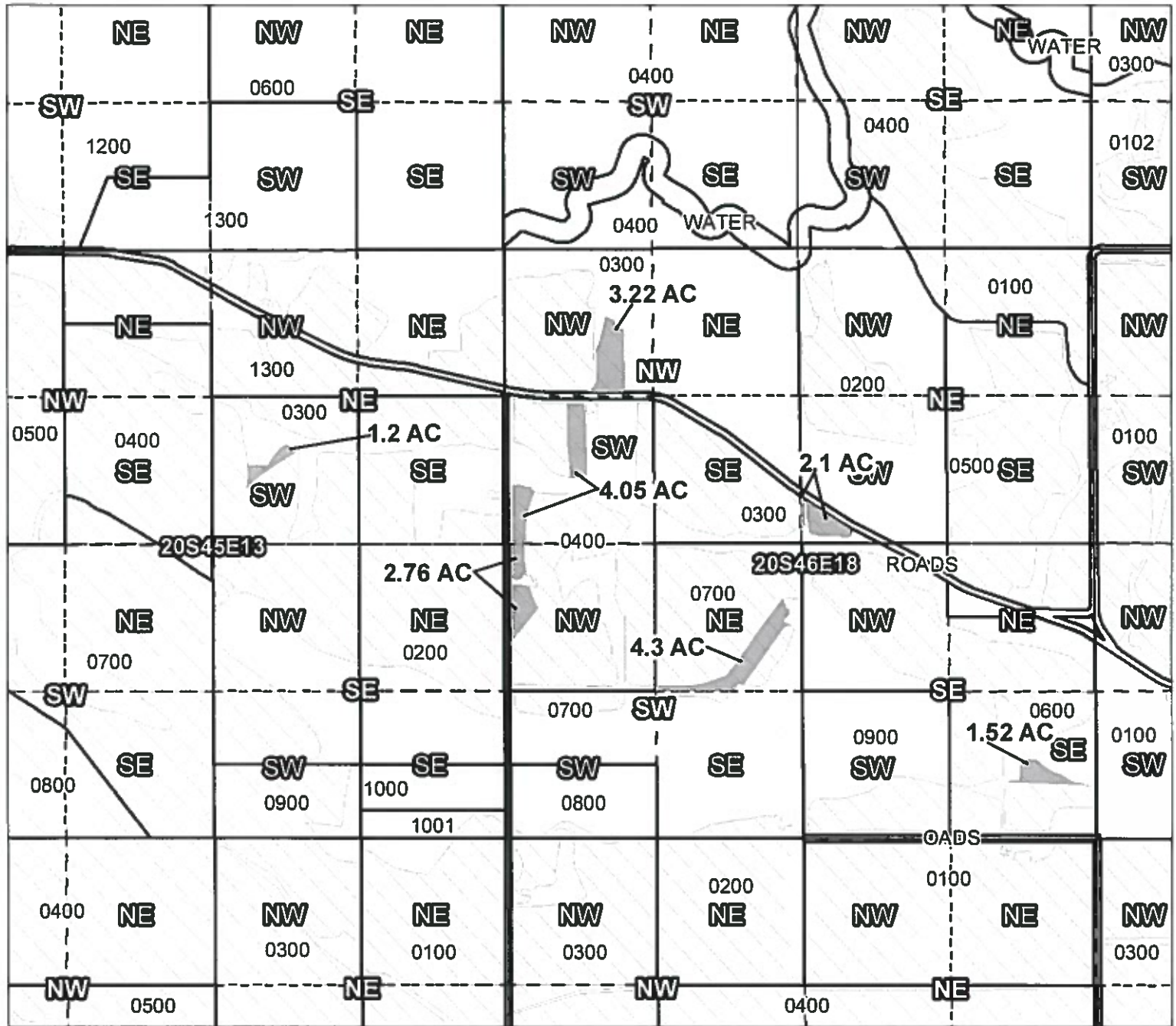
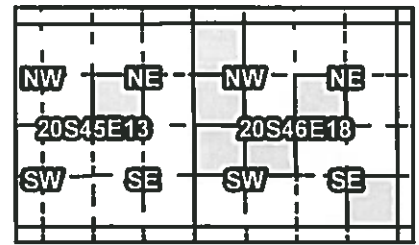
Prepared by Geo-Spatial Solutions Inc. | December 2014

Owyhee Irrigation District

2014 District Transfer Application "Off" Map

Certificates: 75691

for Norman Bennett








Taxlot 0300, 20S46E18NWNW: 3.22 ac. Off, 19.98 Acres Remaining
 Taxlot 0400, 20S46E18SWNW: 4.05 ac. Off, 17.25 Acres Remaining
 Taxlot 0300, 20S46E18SWNE: 2.1 ac. Off, 8 Acres Remaining
 Taxlot 0400, 20S46E18NWSW: 2.76 ac. Off, 28.44 Acres Remaining
 Taxlot 0700, 20S46E18NESW: 4.3 ac. Off, 27.4 Acres Remaining
 Taxlot 0300, 20S45E13SWNE: 1.2 ac. Off, 29.3 Acres Remaining
 Taxlot 0600, 20S46E18SESE: 1.52 ac. Off, 24.08 Acres Remaining

SALEM, OR

JAN 02 2015

RECEIVED BY CWRD

-  Point of Diversion
-  Canals
-  Taxlots
-  Transfer
-  Cert 75691

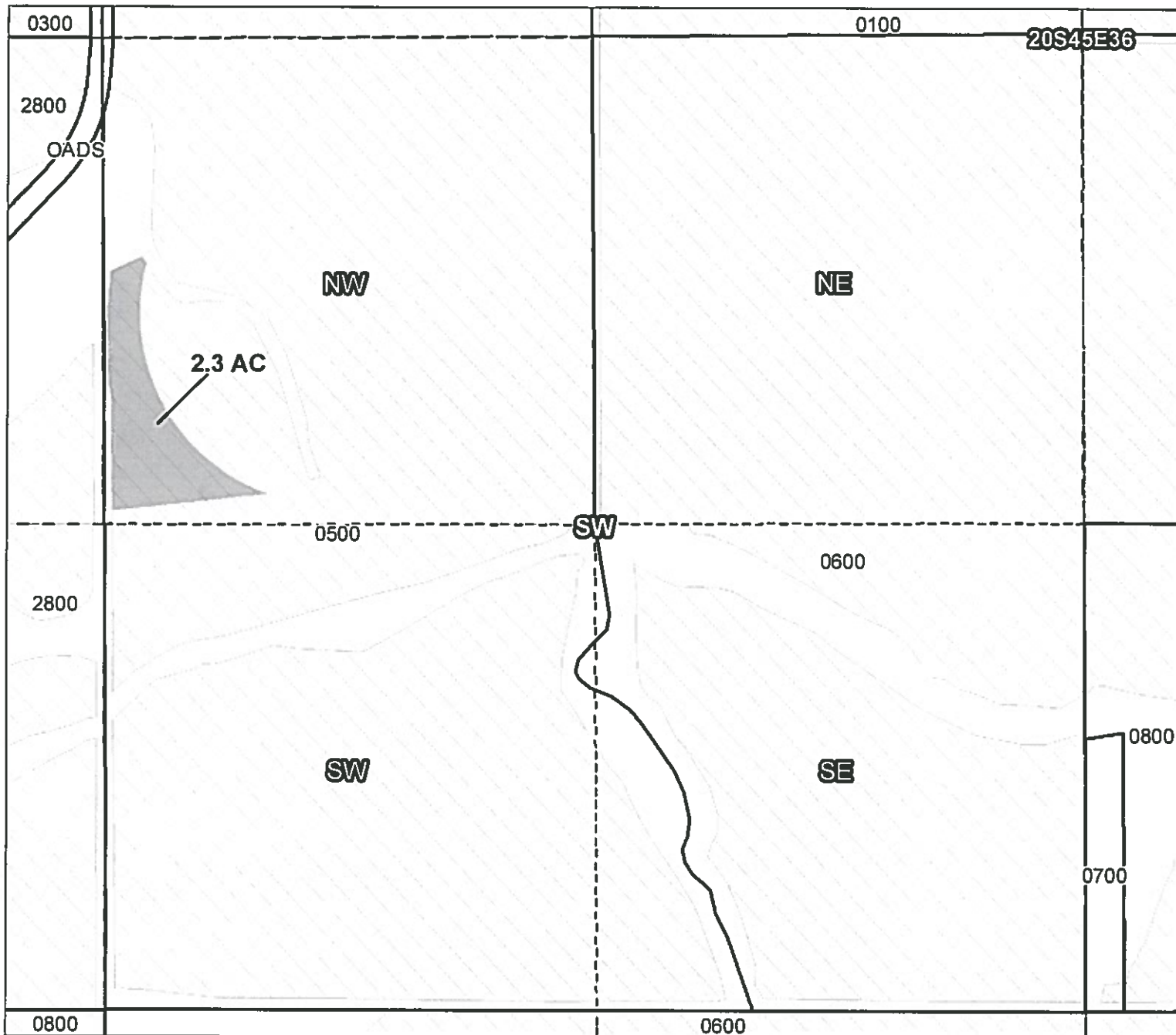
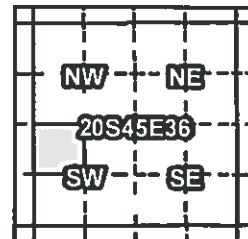


1 inch = 1,320 feet

Owyhee Irrigation District

2014 District Transfer Application "Off" Map

Certificates: 75691
for Norman Bennett





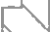


Taxlot 0500, 20S45E36NWSW: 2.3 ac. Off, 34.2 Acres Remaining

RECEIVED BY OWRD

JAN 02 2015

SALEM, OR

-  Point of Diversion
-  Canals
-  Taxlots
-  Transfer
-  Cert 75691



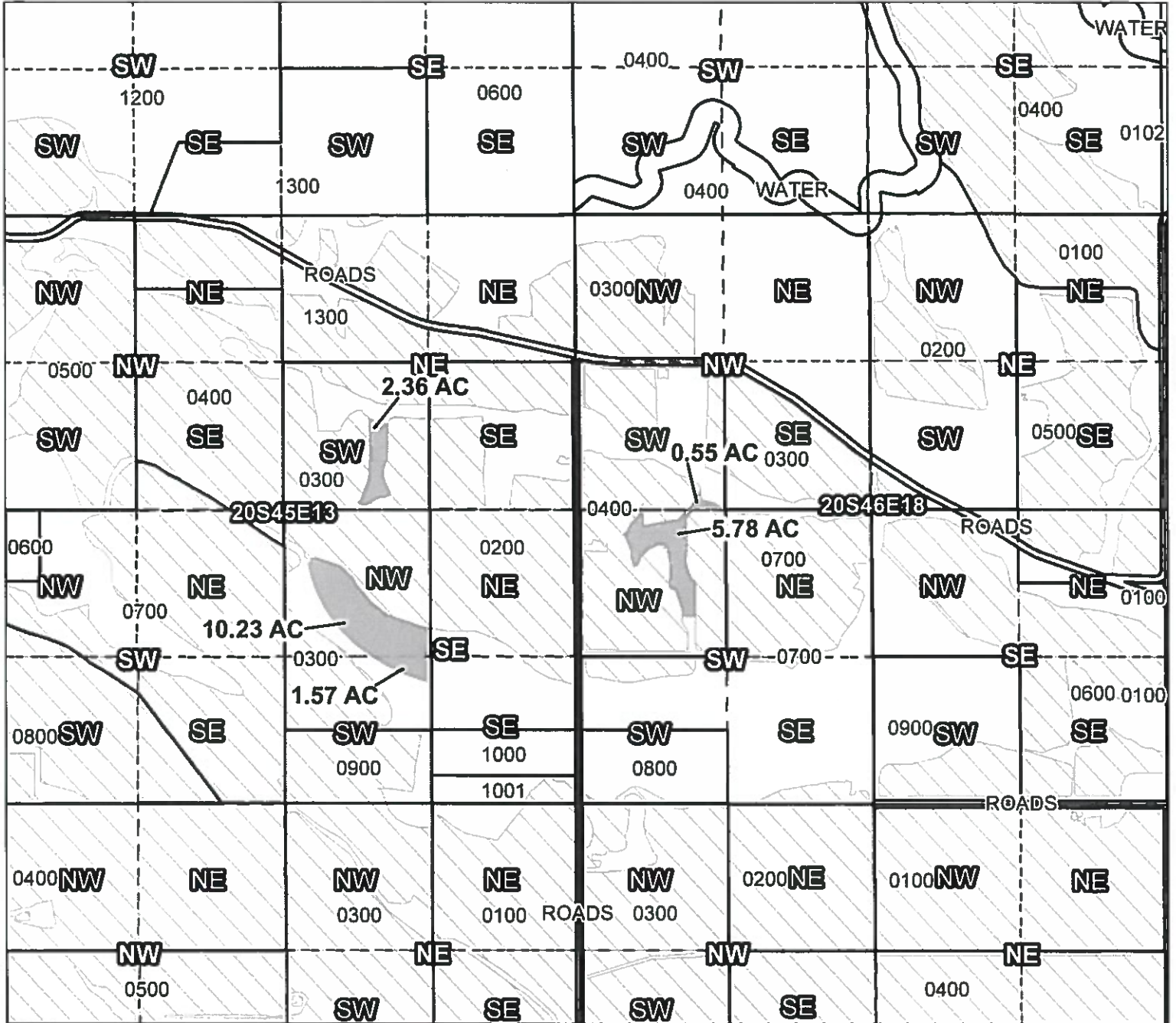
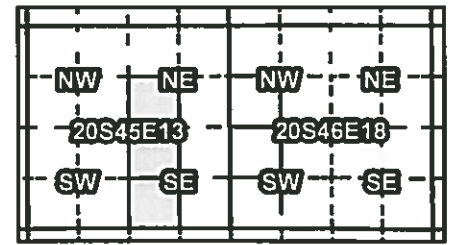
1 inch = 400 feet

Prepared by Geo-Spatial Solutions Inc. | December 2014

Owyhee Irrigation District

2014 District Transfer Application "On" Map

Certificates: 75691
for Norman Bennett



Taxlot 0300, 20S45E13SWNE: 2.36 ac. On, 31.66 Acres Total
 Taxlot 0300, 20S45E13NWSE: 10.23 ac. On, 34.13 Acres Total
 Taxlot 0300, 20S45E13SWSE: 1.57 ac. On, 31.27 Acres Total
 Taxlot 0400, 20S46E18SWNW: 0.55 ac. On, 17.8 Acres Total
 Taxlot 0400, 20S46E18NWSW: 5.78 ac. On, 34.22 Acres Total

- Point of Diversion
- Canals
- Taxlots
- Transfer
- Cert 75691

RECEIVED BY OWRD

JAN 02 2015

SALEM, OR

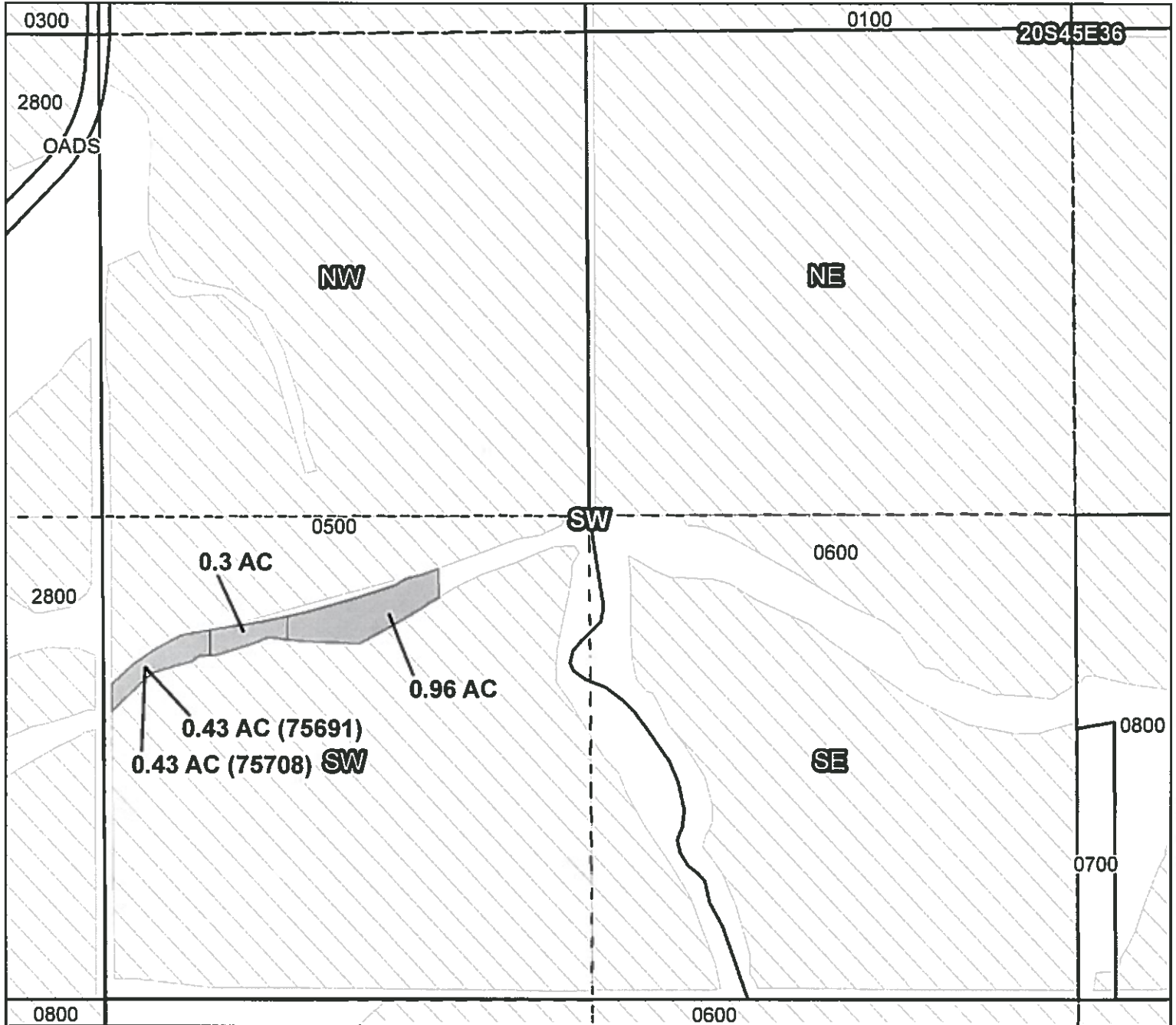
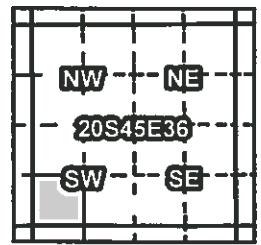


1 inch = 1,320 feet

Owyhee Irrigation District

2014 District Transfer Application "On" Map

Certificates: 75691 & 75708
for Norman Bennett



Cert: 75691 - Taxlot 0500, 20S45E36SWSW: 0.96 ac. On, 34.99 Acres Total
 Cert: 75691 - Taxlot 0500, 20S45E36SWSW: 0.3 ac. On, 34.99 Acres Total
 Cert: 75691 - Taxlot 0500, 20S45E36SWSW: 0.43 ac. On, 34.99 Acres Total
 Cert: 75708 - Taxlot 0500, 20S45E36SWSW: 0.43 ac. On, 34.99 Acres Total

- Point of Diversion
- Canals
- Taxlots
- Transfer
- Cert 75691
- Cert 75708

RECEIVED BY OWRD

JAN 02 2015

SALEM, OR

Prepared by Geo-Spatial Solutions Inc. | December 2014

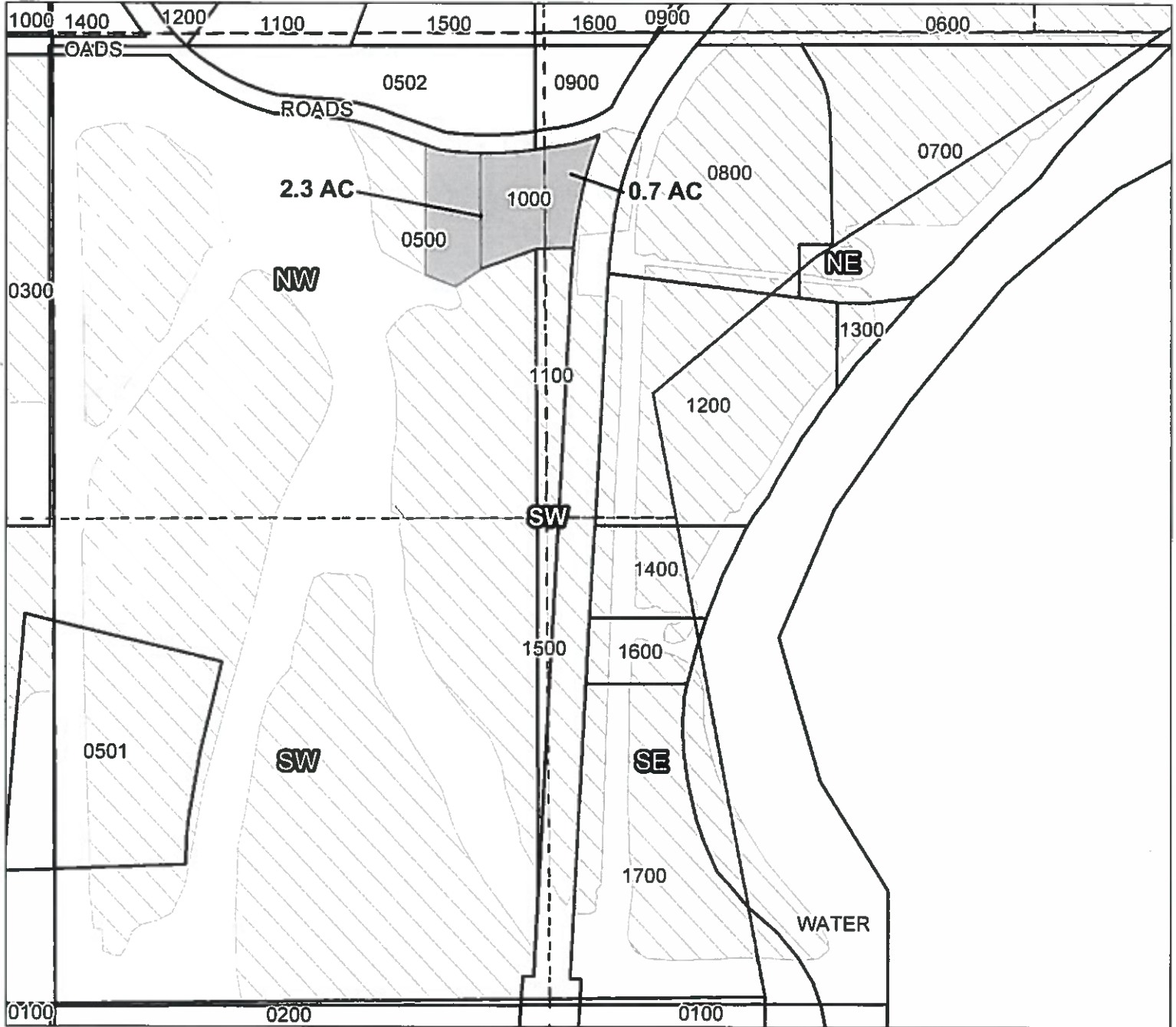
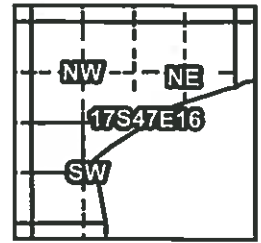


1 inch = 400 feet






Owyhee Irrigation District

2014 District Transfer Application "On" Map

Certificates: 75691
for Joseph Stirm



Taxlot 1000, 17S47E16NESW: 0.7 ac. On, 1.9 Acres Total
3111 Taxlot 1000, 17S47E16NWSW: 2.3 ac. On, 10.1 Acres Total

-  Point of Diversion
-  Canals
-  Taxlots
-  Transfer
-  Cert 75691

RECEIVED BY OWRD

JAN 02 2015

SALEM, OR

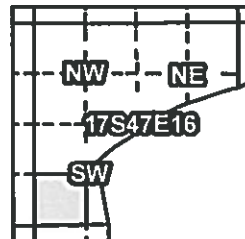


1 inch = 400 feet

Prepared by Geo-Spatial Solutions Inc. | December 2014

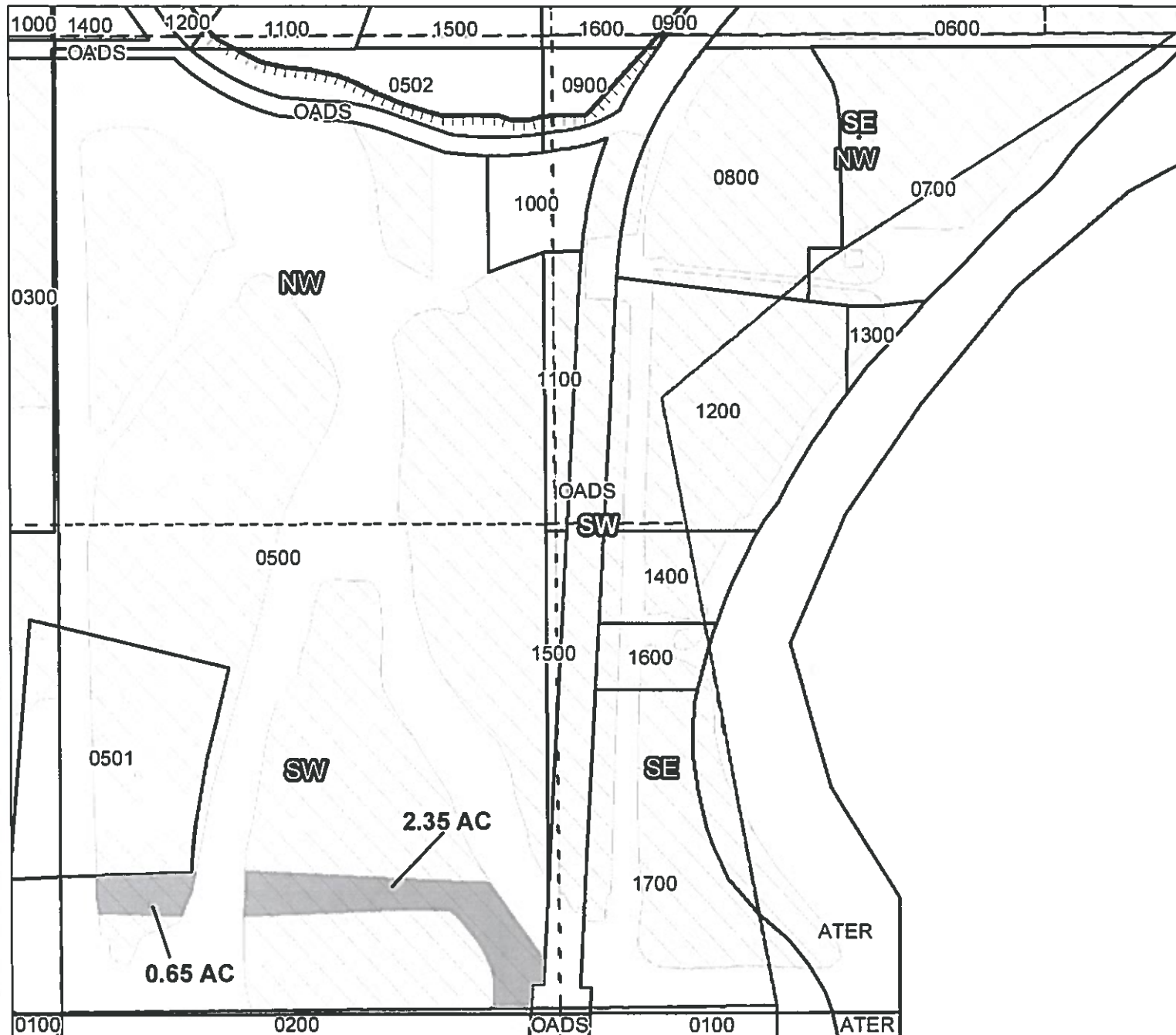
Owyhee Irrigation District

2014 District Transfer Application "Off" Map



Certificates: 75691

for Joseph Stirm








Taxlot 0500, 17S47E16SWSW: 0.65 ac. Off, 27.35 Acres Remaining

Taxlot 0500, 17S47E16SWSW: 2.35 ac. Off, 25 Acres Remaining

RECEIVED BY OWRD

JAN 02 2015

SALEM, OR

-  Point of Diversion
-  Canals
-  Taxlots
-  Transfer
-  Cert 75691



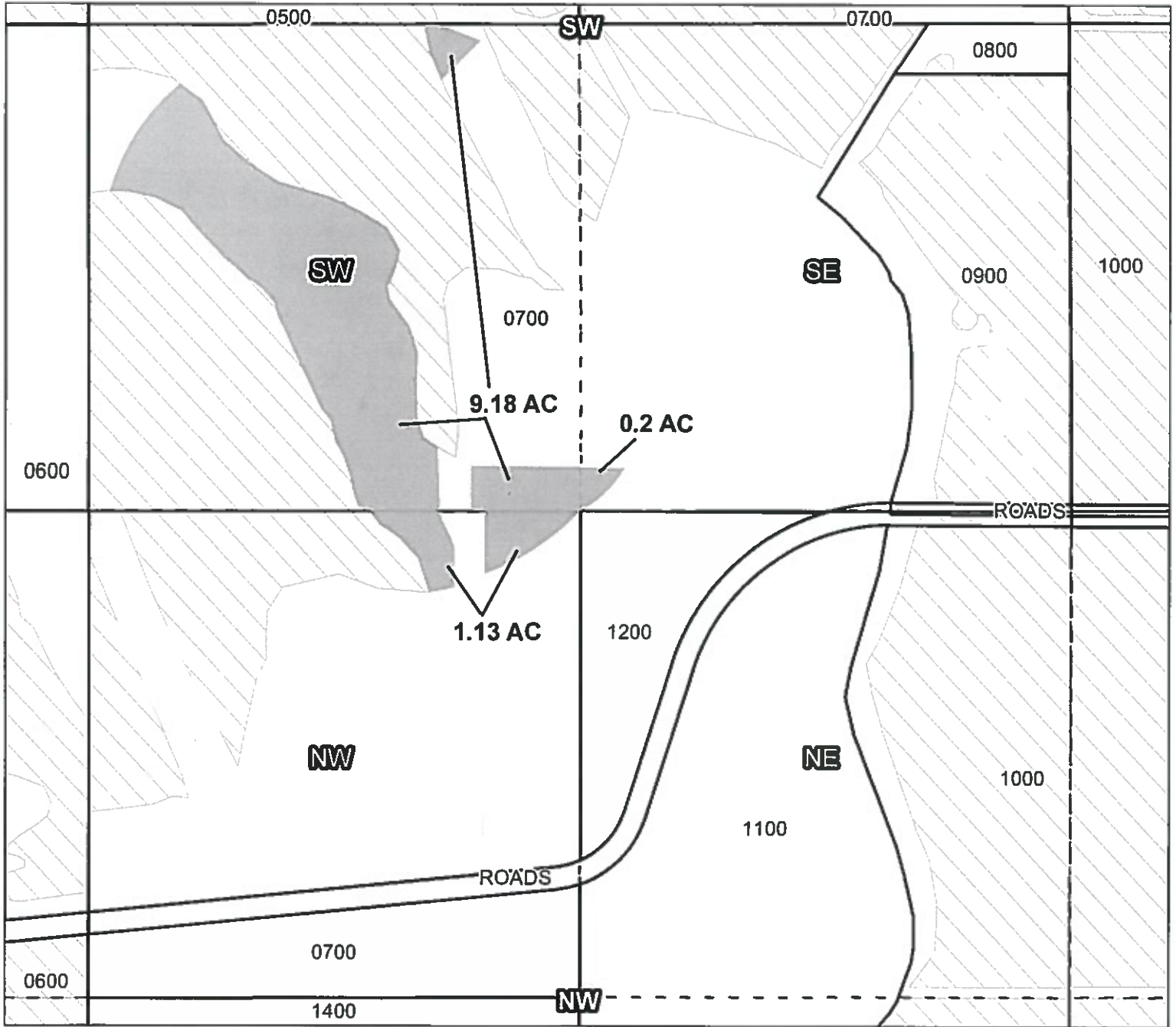
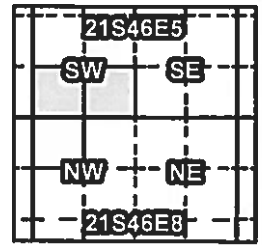
1 inch = 400 feet

Prepared by Geo-Spatial Solutions Inc. | December 2014

Owyhee Irrigation District

2014 District Transfer Application "On" Map

Certificates: 75691
for Chad Cruickshank



Taxlot 0700, 21S46E5SWSW: 9.18 ac. On, 30.44 Acres Total
 Taxlot 0700, 21S46E5SESW: 0.2 ac. On, 11.02 Acres Total
 Taxlot 0700, 21S46E8NWNW: 1.13 ac. On, 7.36 Acres Total

- Point of Diversion
- Canals
- Taxlots
- Transfer
- Cert 75691

RECEIVED BY OWRD

JAN 02 2015



1 inch = 400 feet

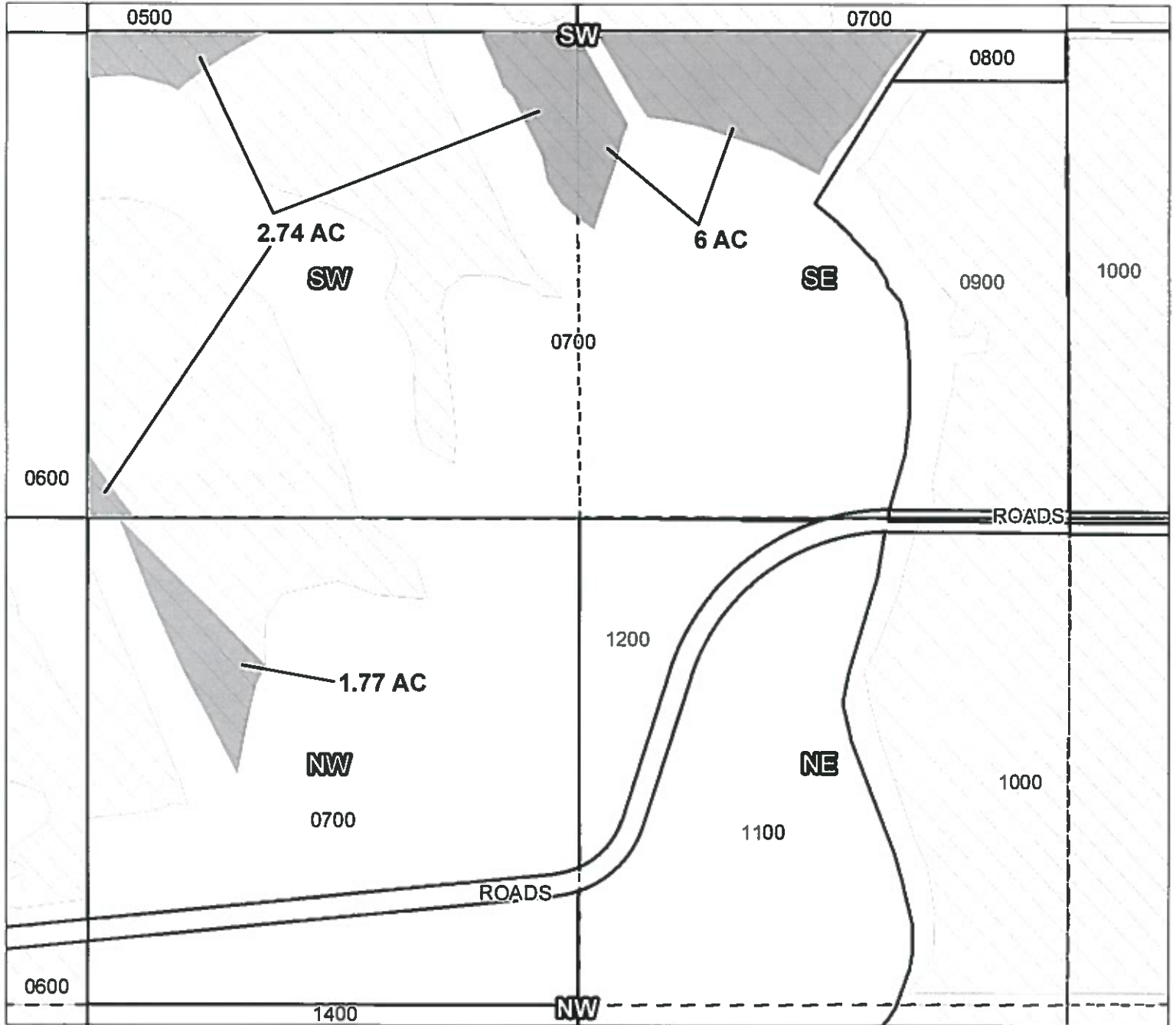
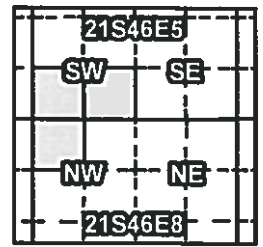
SALEM, OR

Prepared by Geo-Spatial Solutions Inc. | December 2014

Owyhee Irrigation District

2014 District Transfer Application "Off" Map

Certificates: 75691
for Chad Cruickshank



Taxlot 0700, 21S46E5SWSW: 2.74 ac. Off, 21.26 Acres Remaining
 Taxlot 0700, 21S46E5SESW: 6 ac. Off, 11 Acres Remaining
 Taxlot 0700, 21S46E8NWNW: 1.77 ac. Off, 6.23 Acres Remaining

- Point of Diversion
- Canals
- Taxlots
- Transfer
- Cert 75691

RECEIVED BY OWRD

JAN 02 2015

SALEM, OR



1 inch = 400 feet

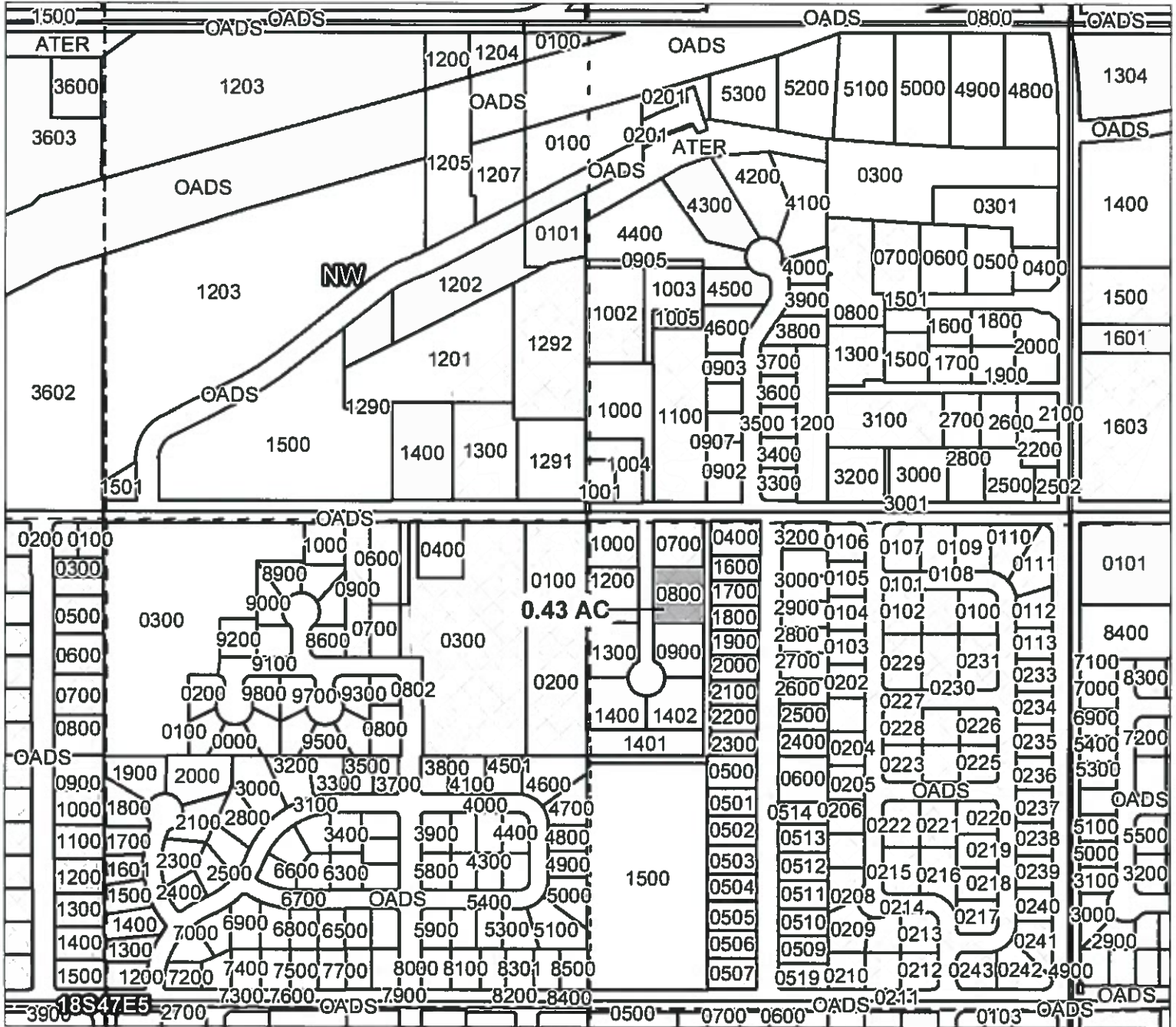
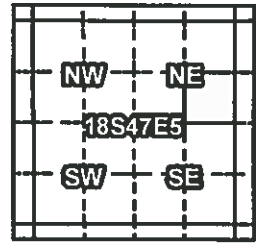
Prepared by Geo-Spatial Solutions Inc. | December 2014

Owyhee Irrigation District

2014 District Transfer Application "Off" Map

Certificates: 75691 & 75708

for Sheryl Yano



Cert: 75691 - Taxlot 0800, 18S47E5SENE: 0.43 ac. Off, 17.17 Acres Remaining
 Cert: 75708 - Taxlot 0800, 18S47E5SENE: 0.43 ac. Off, 17.17 Acres Remaining

- Point of Diversion
- Canals
- Taxlots
- Transfer
- Cert 75691
- Cert 75708

RECEIVED BY OWRD

JAN 02 2015

SALEM, OR

Prepared by Geo-Spatial Solutions Inc. | December 2014

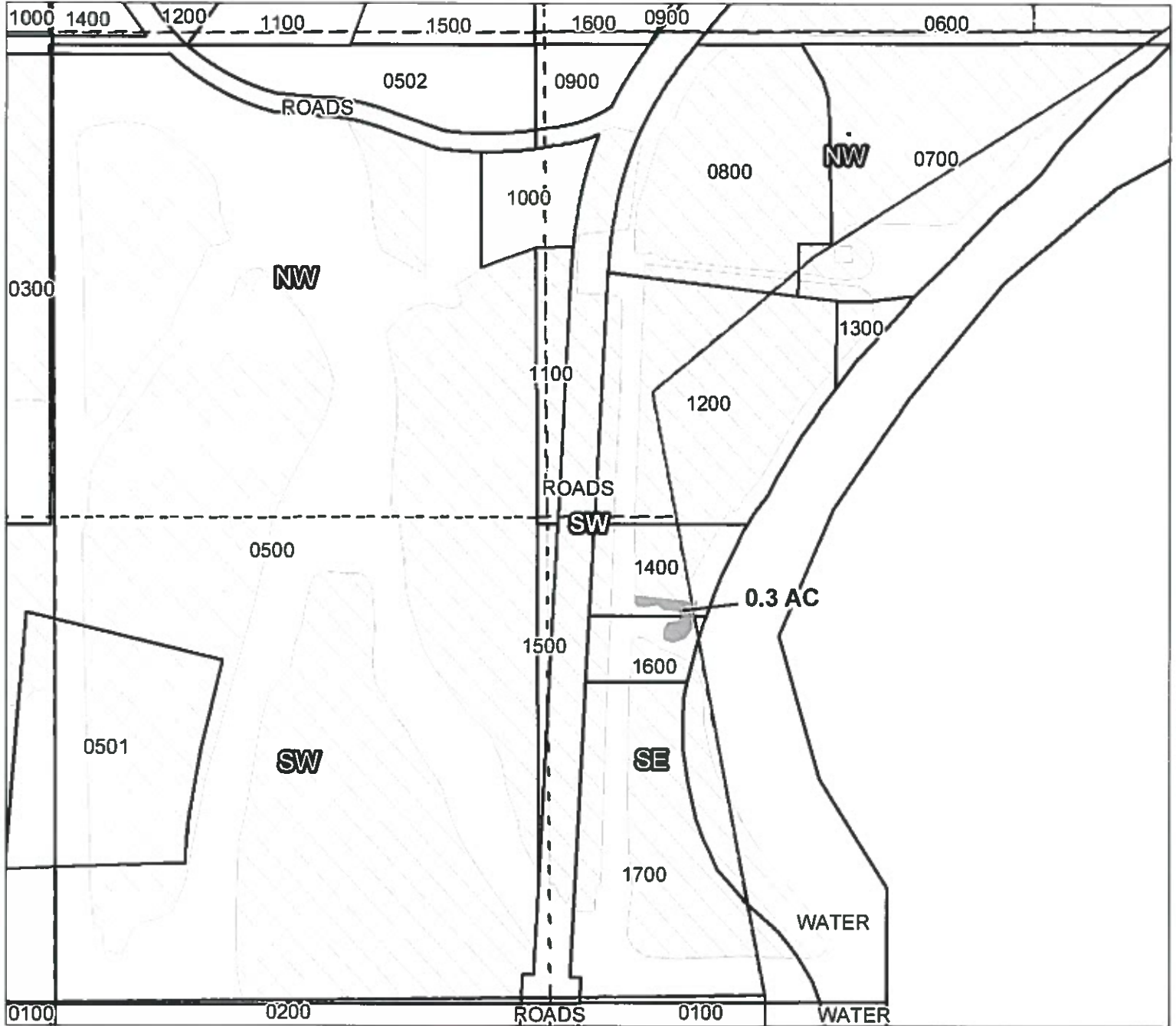
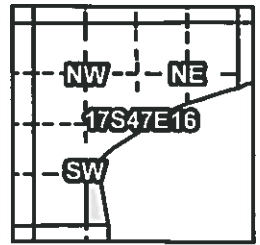


1 inch = 400 feet

Owyhee Irrigation District

2014 District Transfer Application "Off" Map

Certificates: 75691
for Robert McClure



3111-Taxlot 1600, 17S47E16SESW: 0.3 ac. Off, 10.8 Acres Remaining

RECEIVED BY OWRD

JAN 02 2015

SALEM, OR

- Point of Diversion
- Canals
- Taxlots
- Transfer
- Cert 75691



1 inch = 400 feet

Prepared by Geo-Spatial Solutions Inc. | December 2014