

**T5N, R35E, WM  
Sections 3, 4, 5, 8, 9, 10**  
**T6N, R35E, WM  
Sections 31 and 32**  
**UMATILLA COUNTY**

**Points of Appropriation**

POA 3A: 1156 ft N and 314 ft E from S4 Corner of Section 3. Flowmeter in same location. Well Log UMAT 55526.

POA 4A: 415 ft S and 500 ft W from Center of Section 4. Flowmeter in same location. Well Log UMAT 55523.

POA 4D: 375 ft S and 940 ft W from Center of Section 4. Flowmeter in same location. Well Log UMAT 56382.

POA 50516: 830 ft S and 1355 ft E from NW Corner of Section 4. Flowmeter in same location. Well Log UMAT 50516.

**----- Conveyance**

Conveyance system is buried pressure pipeline ranging in size from 6 to 15 inches in diameter. Water applied for irrigation of various crops with variety of sprinkler and drip irrigation systems.

**Place of Use**



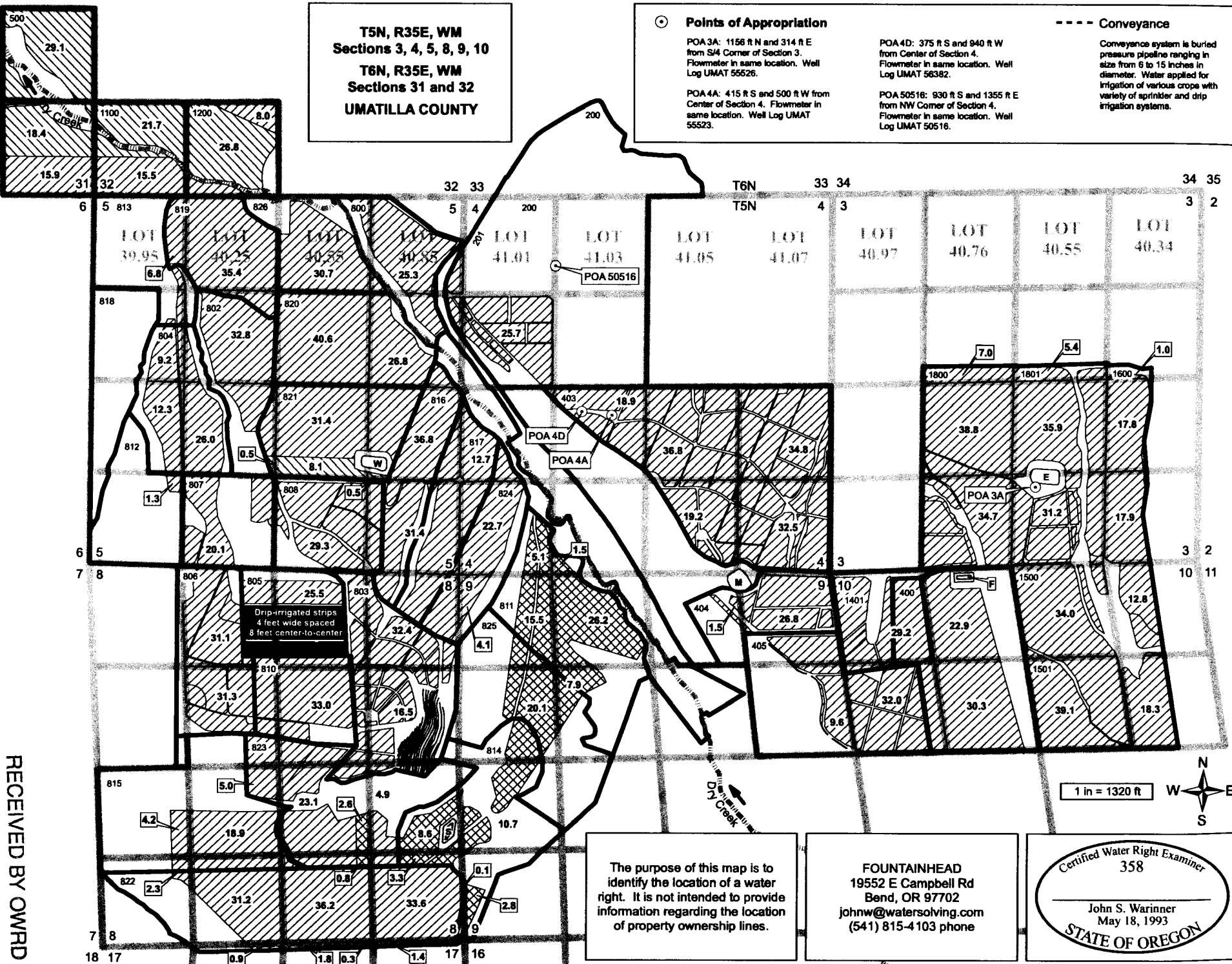
Transfer FROM 105.1 acres:  
 T5N, R35E, Sec 4, SW SW, 5.1 acres  
 T5N, R35E, Sec 4, SE SW, 1.5 acres  
 T5N, R35E, Sec 8, NE SE, 8.6 acres  
 T5N, R35E, Sec 8, NW SE, 2.8 acres  
 T5N, R35E, Sec 8, SW SE, 0.8 acres  
 T5N, R35E, Sec 8, SE SE, 3.3 acres  
 T5N, R35E, Sec 9, NE NW, 26.2 acres  
 T5N, R35E, Sec 9, NW NW, 15.5 acres  
 T5N, R35E, Sec 9, SW NW, 20.1 acres  
 T5N, R35E, Sec 9, SE NW, 7.9 acres  
 T5N, R35E, Sec 9, NW SW, 10.7 acres  
 T5N, R35E, Sec 9, SW SW, 2.8 acres



Transfer TO 105.1 acres:  
 T5N, R35E, Sec 5, NE SW, 0.5 acre  
 T5N, R35E, Sec 5, NW SW, 8.1 acres  
 T5N, R35E, Sec 5, NE SE, 0.5 acre  
 T6N, R35E, Sec 31, NE SE, 29.1 acres  
 T6N, R35E, Sec 31, SE SE, 18.4 acres  
 T6N, R35E, Sec 32, SW SW, 21.7 acres  
 T6N, R35E, Sec 32, SE SW, 26.8 acres



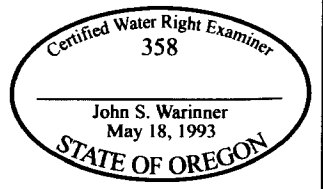
Remaining acres not included in transfer



Drip-irrigated strips  
 4 feet wide spaced  
 8 feet center-to-center

The purpose of this map is to identify the location of a water right. It is not intended to provide information regarding the location of property ownership lines.

FOUNTAINHEAD  
 19552 E Campbell Rd  
 Bend, OR 97702  
 johnw@watersolving.com  
 (541) 815-4103 phone



**TEMPORARY TRANSFER MAP  
 Certificate 86441**  
 in the name of  
 HIGH RIDGE PROPERTY LLC  
 POWERLINE RANCH LLC  
 Revised: 04 JAN 2015

RECEIVED BY OWRD  
 JAN 12 2015  
 SALEM, OR