

POA LOCATION DESCRIPTIONS

Well 1 (from Permit)
SW1/4 NE1/4, Section 26, T3N, R23E (W.M.)
1,950 feet South and 2,320 feet West from the NE corner of Section 26.

Well 2 (from Permit)
SE1/4 NE1/4, Section 26, T3N, R23E (W.M.)
1,950 feet South and 1,060 feet West from the NE corner of Section 26.

Well 3 (from Permit)
NW1/4 NW1/4, Section 19, T3N, R24E (W.M.)
1,110 feet South and 265 feet East from the NW corner of Section 19.

Well 4 (from Permit)
NW1/4 NW1/4, Section 19, T3N, R24E (W.M.)
770 feet South and 320 feet East from the NW corner of Section 19.

Well 1 M 50791
1,830 feet South and 2,555 feet West from the NE corner of Section 26, T3N, R23E (W.M.)

Well 2 M 50828
1,845 feet South and 990 feet West from the NE corner of Section 26, T3N, R23E (W.M.)

Well 3 M 50783
1,955 feet North and 510 feet West from the SE corner of Section 24, T3N, R23E (W.M.)

Well 4 M 50821
1,020 feet South and 80 feet West from the NE corner of Section 24, T3N, R23E (W.M.)

Well 5 M 51237
3,075 feet South and 2,600 feet West from the NE corner of Section 27, T3N, R23E (W.M.)

Well 6 M 51371
1,800 feet South and 2,575 feet West from the NE corner of Section 26, T3N, R23E (W.M.)

Application for a Permit Amendment
Corrected Locations and Additional Points of Appropriation
Application in the Name of Threemile Canyon Farms
Application G-15210, Permit G-15144
Township 3 North, Range 23 & 24 East (W.M.)

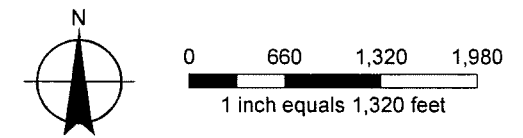
- LEGEND**
- Points of Appropriation (POAs)**
- ⊙ Locations of Proposed POAs from Permit
 - Corrected Locations of Proposed POAs
 - △ Proposed Additional POAs
- All Other Features**
- ▨ Place of Use (POU)
 - ▭ Government Lots
 - ▭ Tax Lots
 - Streets
 - ~ Watercourses

RECEIVED

SEP 25 2013

WATER RESOURCES DEPT
SALEM, OREGON

DISCLAIMER
This map was prepared for the purpose of identifying the location of a water right only and it is not intended to provide legal dimensions or location of property ownership lines.



1011666

MAP NOTES:
Date: September 23, 2013
Data Sources: OWRD, OGIC, ESRI

