


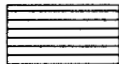




DAVID CORREA (CORREA TO CORREA)

1 YEAR TEMPORARY TRANSFER

MAP 1 OF 3

UMATILLA COUNTY

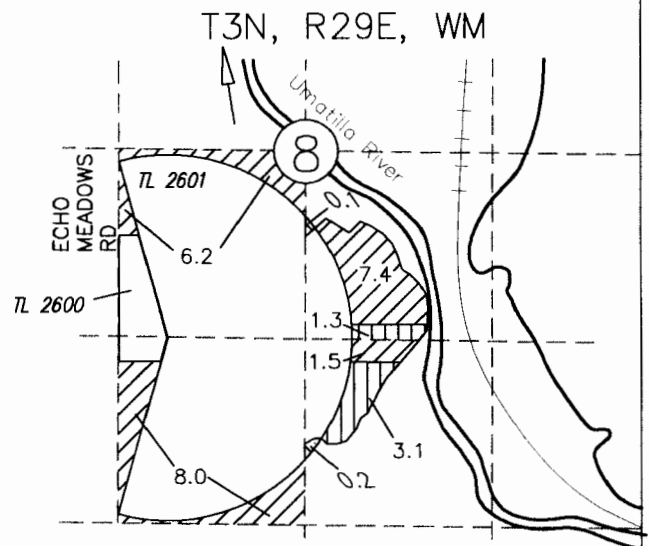
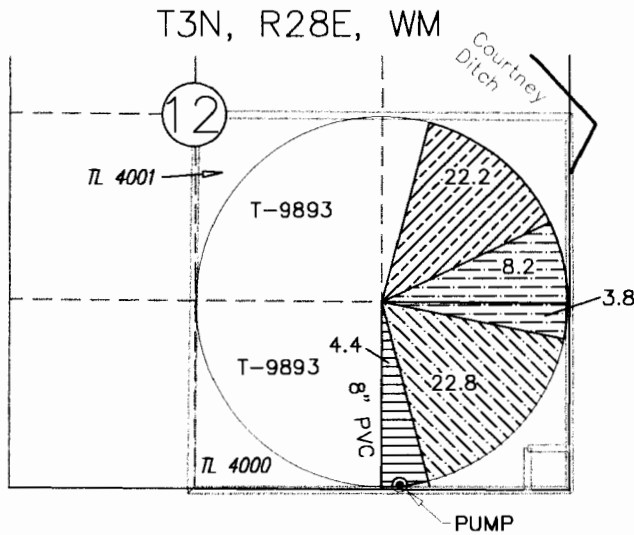
FROM		TO
	23.1	 23.1
	4.4	 4.4
	12.0	
	22.2	

UMATILLA RIVER DECREE VOL 3
 PAGE 239 IN THE NAME OF
 B.F. McCULLOUGH, 01/09/1900

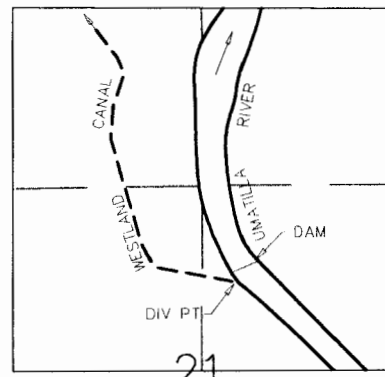
UMATILLA RIVER DECREE VOL 15
 PAGE 432 IN THE NAME OF
 FRANK CORREA SR, 01/09/1900

UMATILLA RIVER DECREE VOL 3
 PAGE 127 IN THE NAME OF
 FRED ANDREWS, 12/31/1870
 FROM MAP 3 OF 3

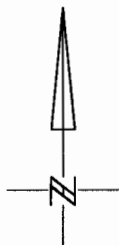
UMATILLA RIVER DECREE VOL 3
 PAGE 239 IN THE NAME OF
 MANDENHALL, 01/09/1900
 FROM MAP 2 OF 3



T.3N., R.29E., W.M.



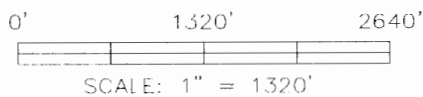
DIV PT LCT N.76°45'56"E. 2913.19' FROM W.1/4 COR. SEC 21



RECEIVED BY OWRD

MAR 26 2015

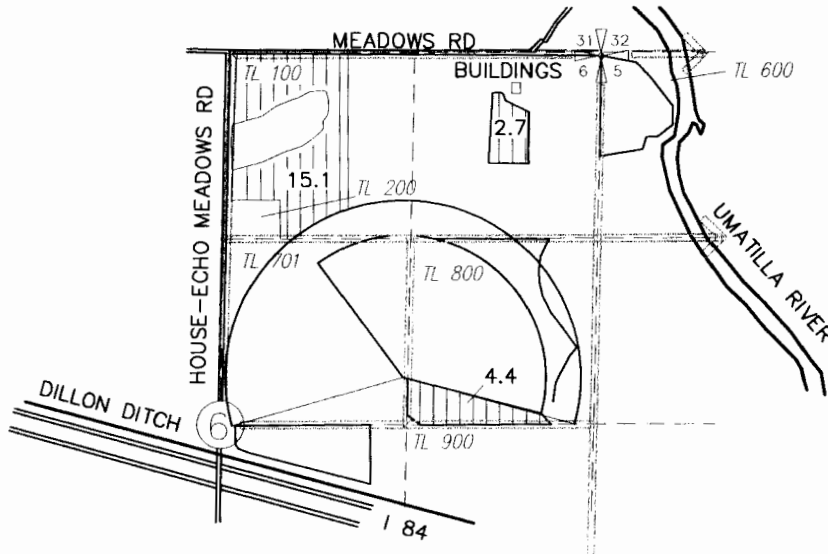
SALEM, OR



NOTE:
 THE PURPOSE OF THIS MAP IS TO IDENTIFY THE APPROXIMATE LOCATION
 OF THE WATER RIGHT. IT IS NOT INTENDED TO PROVIDE INFORMATION
 RELATIVE TO THE LOCATION OF PROPERTY OWNERSHIP BOUNDARY LINES.

DAVID CORREA (BAREMORE TO CORREA) 1 YEAR TEMPORARY TRANSFER

MAP 2 OF 3
UMATILLA COUNTY
T3N, R29E, WM

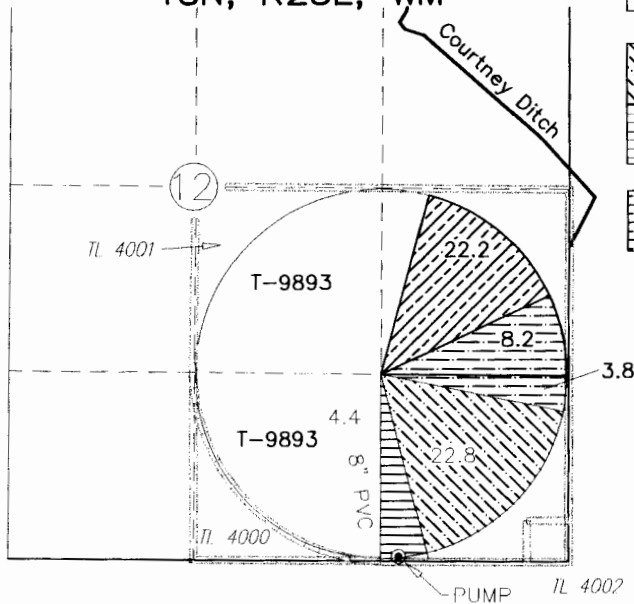


RECEIVED BY OWRD

MAR 26 2015

SALEM, OR

T3N, R28E, WM

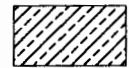


FROM

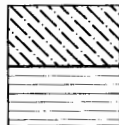
TO



22.2 UMATILLA RIVER DECREE VOL 3
PAGE 239 IN THE NAME OF
MANDENHALL, 01/09/1900



22.2

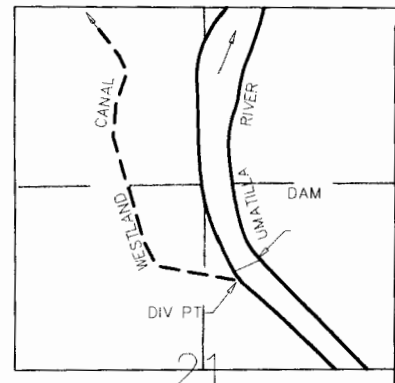


22.8 2015 CORREA TO CORREA 5YR
TEMPORARY TRANSFER FROM
MAP 1 OF 3, 01/09/1900



12.0 UMATILLA RIVER DECREE VOL 3
PAGE 127 IN THE NAME OF
FRED ANDREWS, 12/31/1870
FROM MAP 3 OF 3

T.3N., R.29E., W.M.



DIV PT LCT N.76°45'56"E. 2913.19' FROM W.1/4 COR. SEC 21

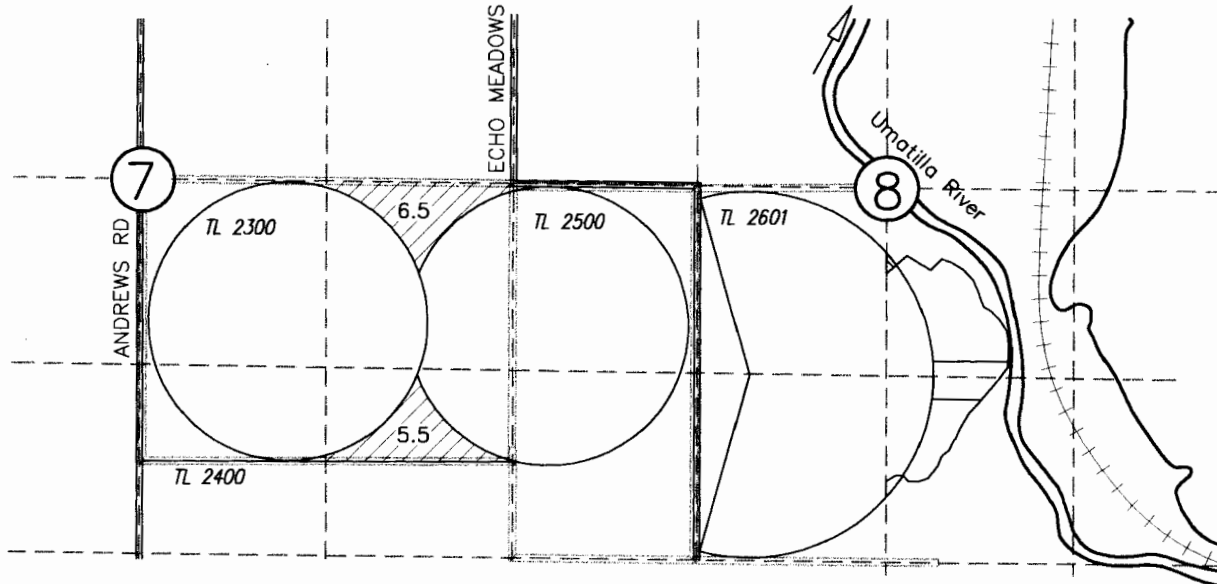
NOTE:
THE PURPOSE OF THIS MAP IS TO IDENTIFY THE APPROXIMATE LOCATION
OF THE WATER RIGHT. IT IS NOT INTENDED TO PROVIDE INFORMATION
RELATIVE TO THE LOCATION OF PROPERTY OWNERSHIP BOUNDARY LINES.

DRAWING: \\kwkfiles\public\Project\30-08-016 -- Porfily Water Rights Consulting\ 00 Misc Engineering\Cad\correa\30-08-016 CORR BEAR 2015.dwg
PRINTED BY: rwillard on 03/23/15 05:19 AM

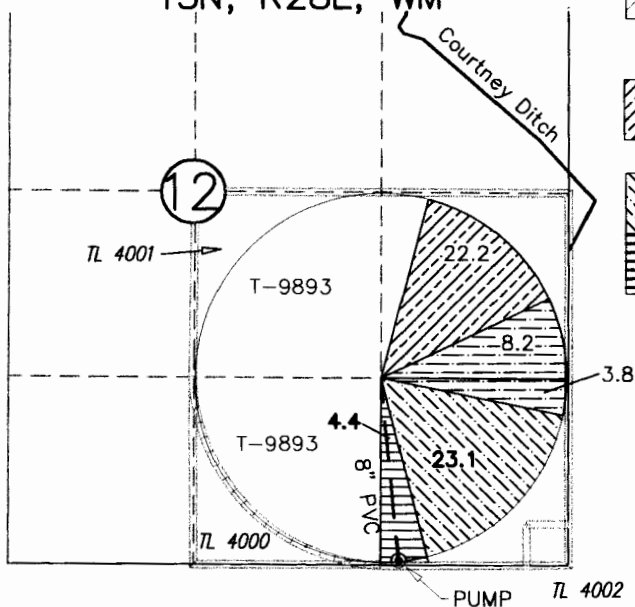
1 12017

DAVID CORREA (MILLS TO CORREA) 1 YEAR TEMPORARY TRANSFER

MAP 3 OF 3
UMATILLA COUNTY
T3N, R29E, WM



T3N, R28E, WM



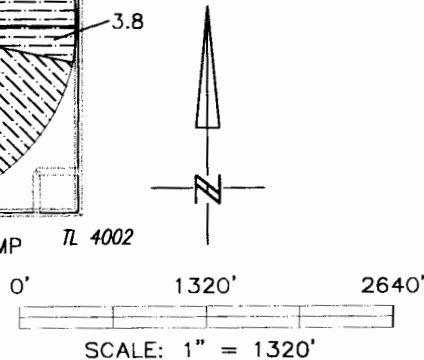
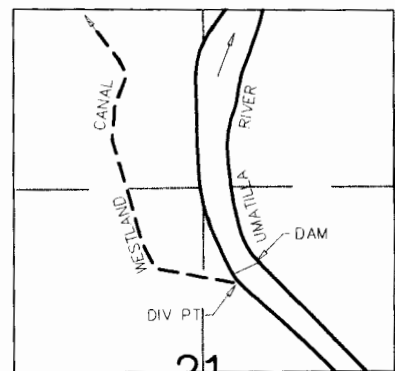
FROM	TO
12.0	12.0
UMATILLA RIVER DECREE VOL 3 PAGE 127 IN THE NAME OF FRED ANDREWS, 12/31/1870	
22.2	22.2
UMATILLA RIVER DECREE VOL 3 PAGE 239 IN THE NAME OF MANDENHALL, 01/09/1900 FROM MAP 2 OF 3	
23.1	23.1
2015 CORREA TO CORREA 5YR TEMPORARY TRANSFER FROM MAP 1 OF 3	

RECEIVED BY OWR

MAR 26 2015

SALEM, OR

T.3N., R.29E., W.M.



NOTE:
THE PURPOSE OF THIS MAP IS TO IDENTIFY THE APPROXIMATE LOCATION OF THE WATER RIGHT. IT IS NOT INTENDED TO PROVIDE INFORMATION RELATIVE TO THE LOCATION OF PROPERTY OWNERSHIP BOUNDARY LINES.

DIV PT LCT N.76°45'56"E. 2913.19' FROM W.1/4 COR. SEC 21

DRAWING: \\kwkfiles\public\Project\30-08-016 - Porfily Water Rights Consulting\00 Misc Engineering\Cad\correa\30-08-016 CORR BEAR tt.dwg
PRINTED BY: rwillard on 03/23/15 05:21 AM

1 12017