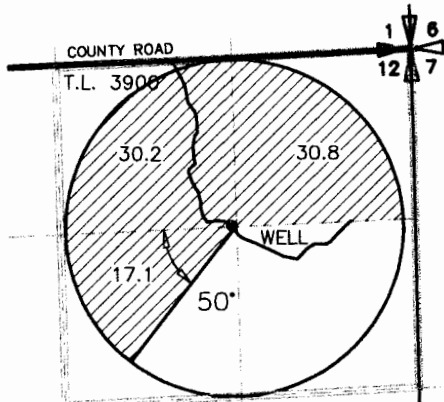
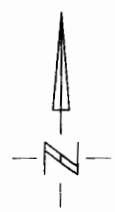


SPIKE RANCH INC. 2015 TEMPORARY
TRANSFER APPLICATION
EXCHANGING WATER RIGHTS DESCRIBED IN
1900 COURTNEY – CERTIFICATE 61114
WITH CERTIFICATE 54758
T 3N

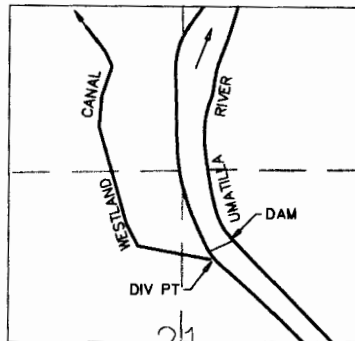


AUTHORIZED
POINT OF APPROPRIATION
WELL CERT 61114
1300'S AND 1390'W FROM NE
CORNER SECTION 12

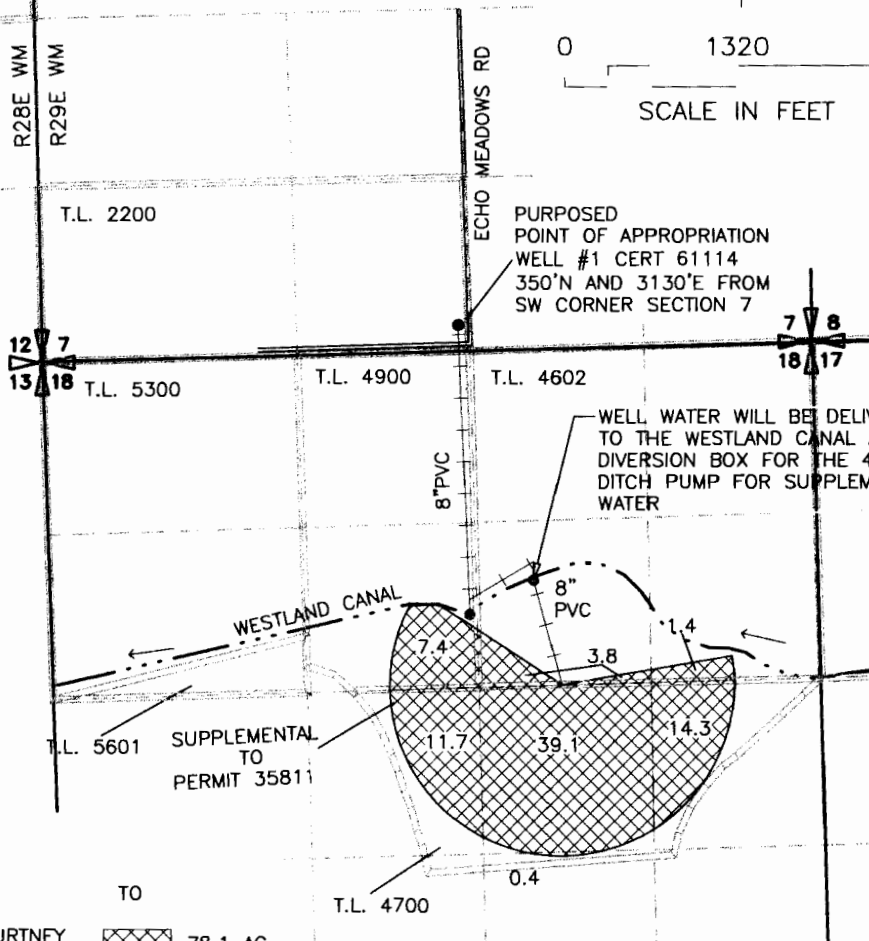


0 1320 2640
SCALE IN FEET

1900 COURTNEY P.O.D.
T3N, R29E, WM



DIV PT LCT N.76°45'56"E. 2913.19' FROM
W.1/4 COR. SEC 21



RECEIVED BY OWRD

MAR 30 2015

SALEM, OR

FROM		TO	
	78.1 AC PRIMARY 1900 COURTNEY SUPPLEMENTAL CERT 61114		78.1 AC
	78.1 AC CERT 54758		78.1 AC

DRAWING: \\kwwfiles\public\Project\30-08-016 - Porfly Water Rights Consulting\3522\053\SPIKE-15.dwg
PRINTED BY: rwillard on 03/10/15 01:29 PM

NOTE:
THE PURPOSE OF THIS MAP IS TO IDENTIFY THE APPROXIMATE LOCATION OF THE WATER RIGHT. IT IS NOT INTENDED TO PROVIDE INFORMATION RELATIVE TO THE LOCATION OF PROPERTY OWNERSHIP BOUNDARY LINES.



1 12022

JUB ENGINEERS, INC.