

1N-10E-02
SW 1/4 1/4

3

| | |
|--------------------------------|---------------|
| Map Legend | |
| H. Michael Pessl | |
| Map Symbols | |
| | Valve |
| | Pipeline |
| | Property Line |
| Water Right Certificate | |
| C-81340 | |
| | Transfer From |
| Water Right Certificate | |
| C-80929 | |
| | Transfer From |
| Section | |
| 1N-10E-02 SW 1/4 1/4 TL 1800 | |
| W.M. Hood River County | |
| Scale 1" = 400' | |
| East Fork Irrigation District | |
| Hood River, Oregon | |

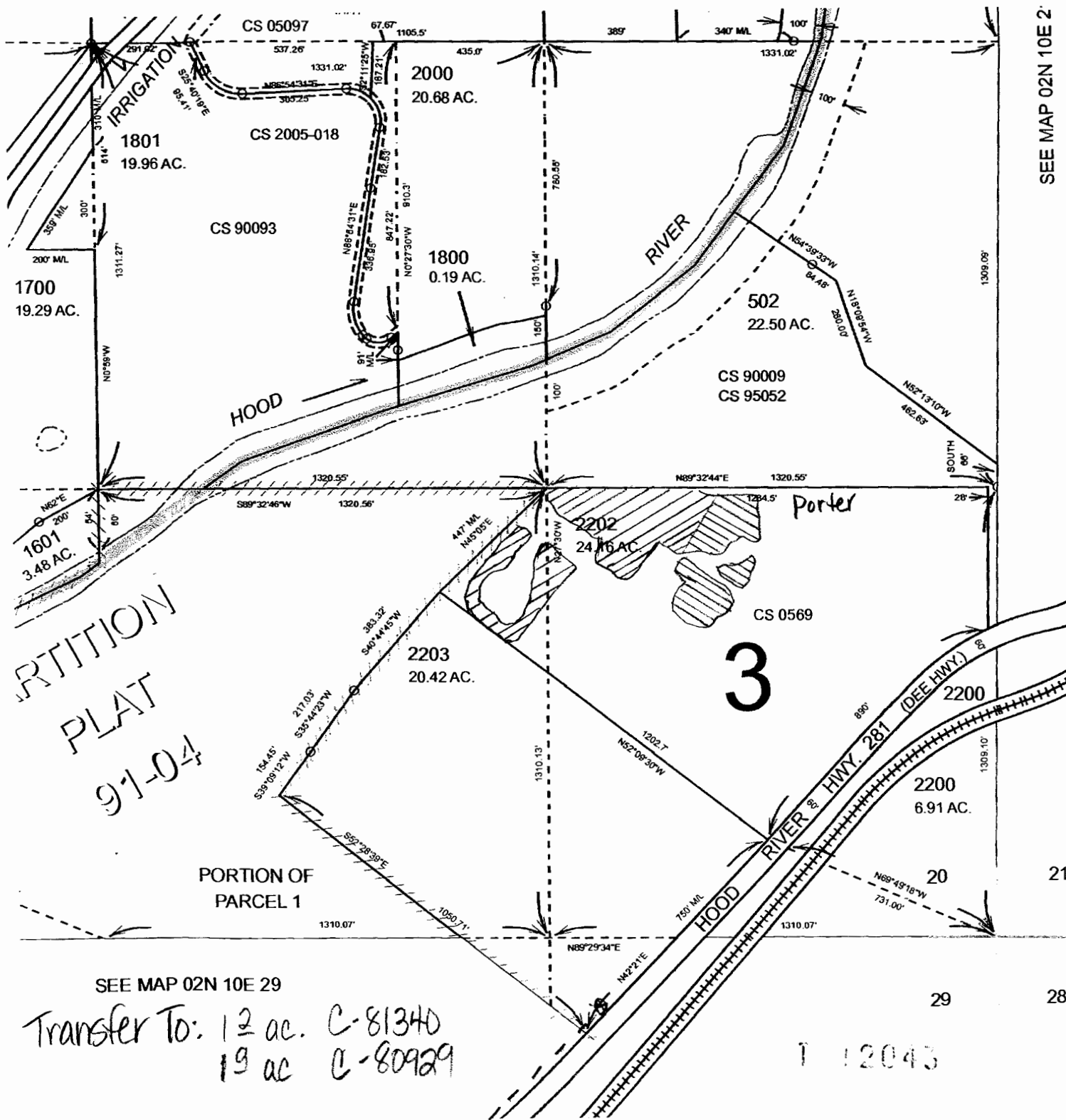
PARTITION

PLAT

RECEIVED BY OWRD
APR 20 2015
SALEM, OR

Transfer From: 12 ac C-81340
8± ac C-80929

SEE MAP 01N 10E 11 1 12043



2N-10E-20
SE 1/4 1/4



RECEIVED BY OWRD

APR 20 2015

SALEM, OR

SEE MAP 02N 10E 2

| | |
|---|---------------|
| Map Legend | |
| Grant & Sandra Porter | |
| Map Symbols | |
| | Valve |
| | Pipeline |
| | Property Line |
| Water Right Certificate | |
| C-81340 | |
| | Transfer To |
| Water Right Certificate | |
| C-80929 | |
| | Transfer To |
| Section | |
| 2N-10E-20 SE 1/4 1/4 TL 2202 | |
| W.M. Hood River County | |
| Scale 1" = 400' | |
| East Fork Irrigation District Hood River, Oregon | |