

RECEIVED

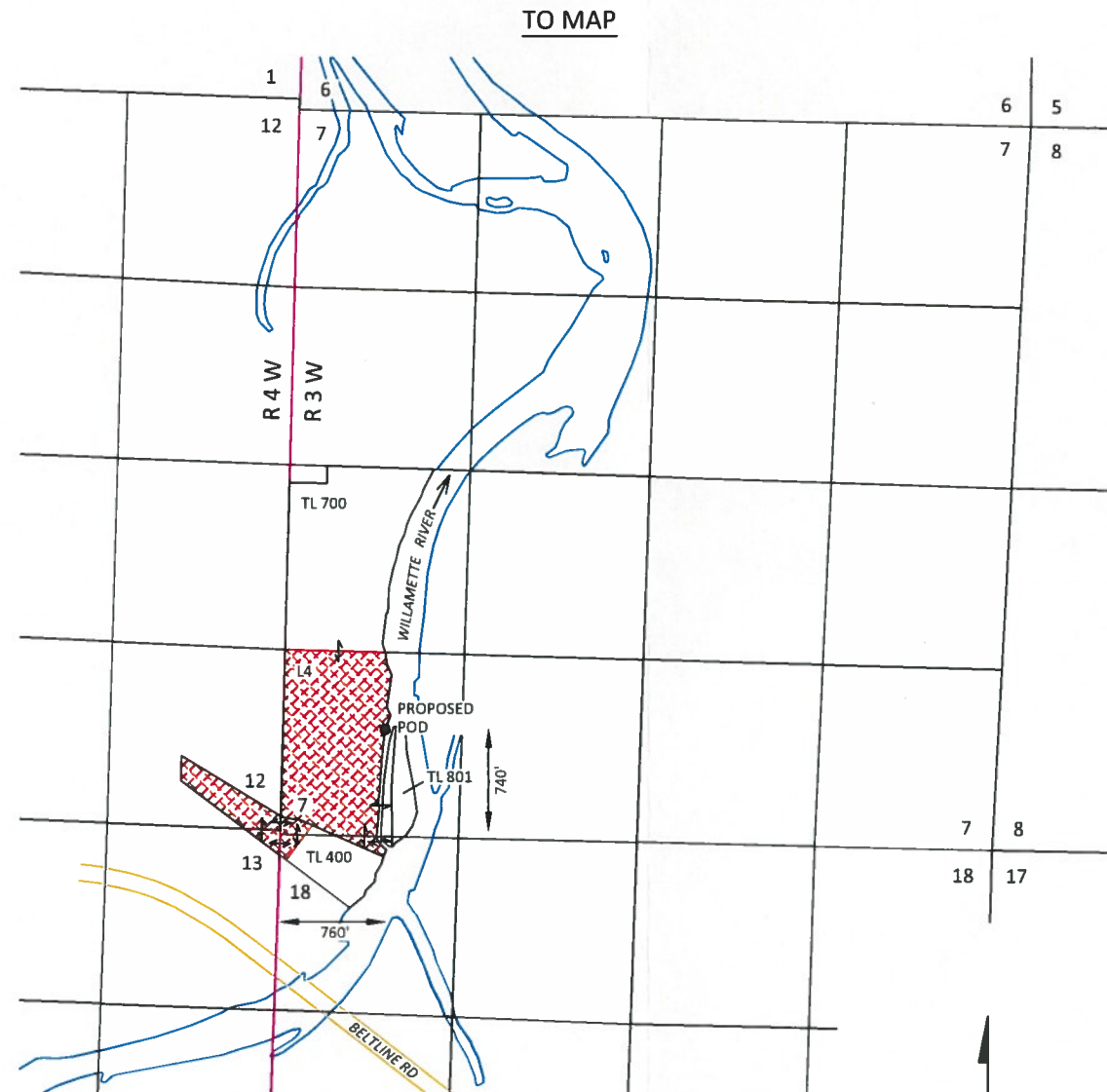
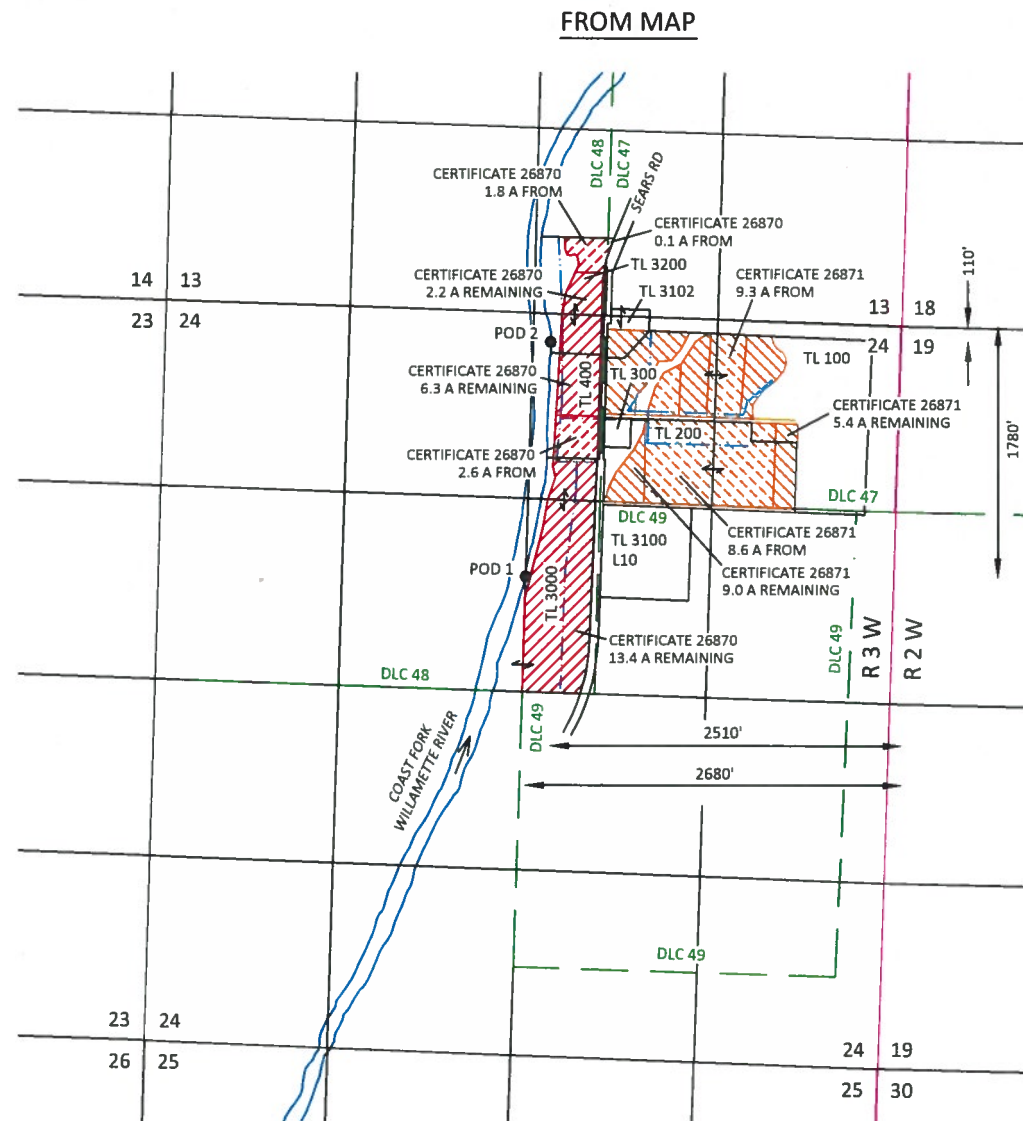
JUN 08 2015

WATER RESOURCES DEPT
SALEM, OREGON

TEMPORARY TRANSFER APPLICATION MAP

Certificates 26870 & 26871

Sections 7 & 18, T17S, R3W, W.M. and Sections 13 & 24, T19S, R3W, W.M., Lane County
Knife River Corporation



EXPLANATION

FROM LANDS

CERTIFICATE 26870 (4.5 A)
IRRIGATION
PRIORITY: 5/24/1956

CERTIFICATE 26871 (17.9 A)
IRRIGATION
PRIORITY: 5/24/1956

POINT OF DIVERSION (POD)

5" MAINLINE (APPROX.)

TO LANDS

CERTIFICATE 26870
INDUSTRIAL/COMMERCIAL
PRIORITY: 5/24/1956

CERTIFICATE 26871
INDUSTRIAL/COMMERCIAL
PRIORITY: 5/24/1956

REMAINING RIGHTS

CERTIFICATE 26870 (21.9 A)
IRRIGATION
PRIORITY: 5/24/1956

CERTIFICATE 26871 (14.4 A)
IRRIGATION
PRIORITY: 5/24/1956

SKOOKUM

WATER ASSOCIATES INC

P.O. BOX 80174
PORTLAND, OR 97280
(503) 319-8926

June 3, 2015

This map is not intended to provide legal
dimensions or locations of property
ownership lines

FIGURE 1

T 12077

RECEIVED

JUN 08 2015

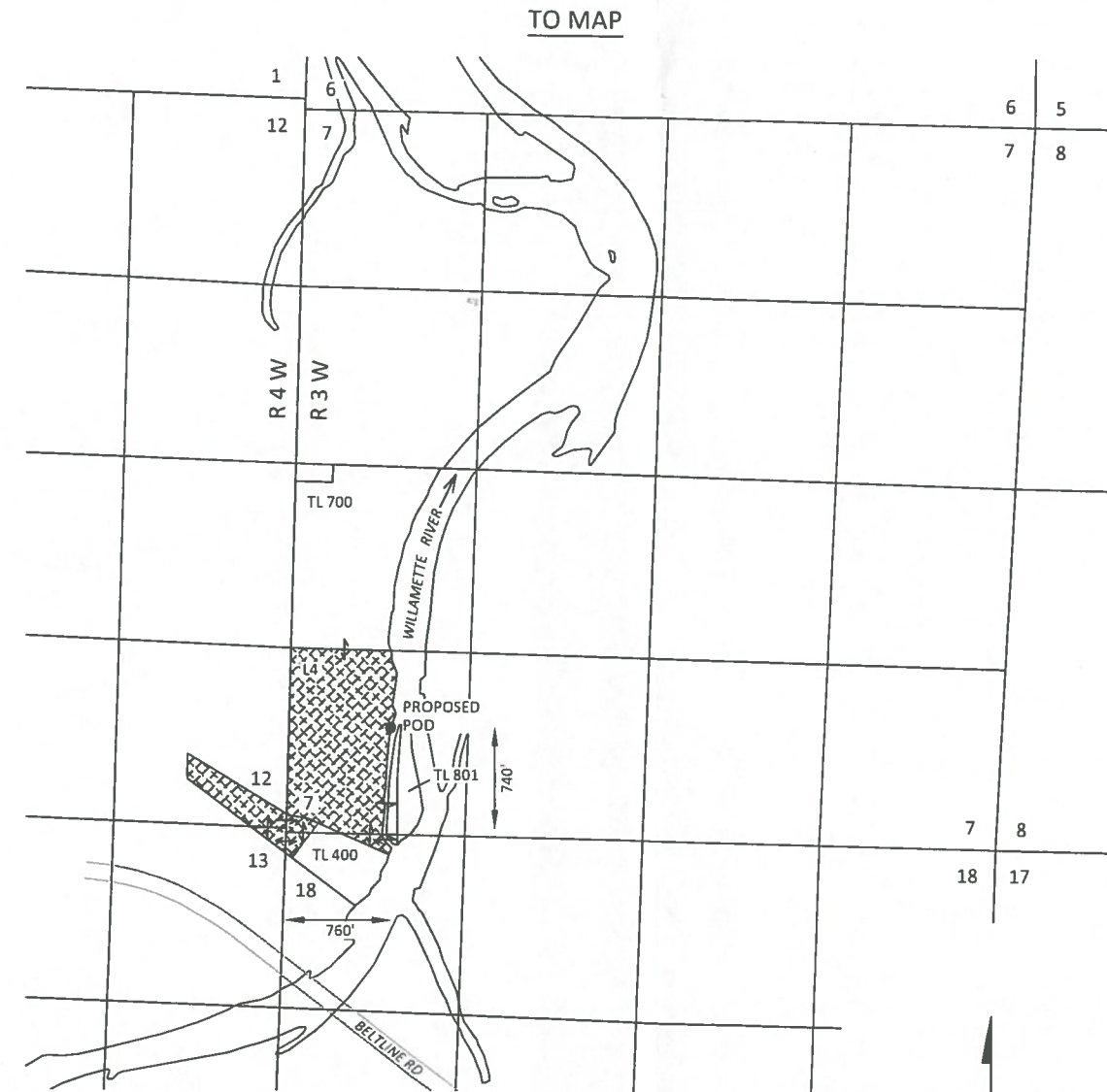
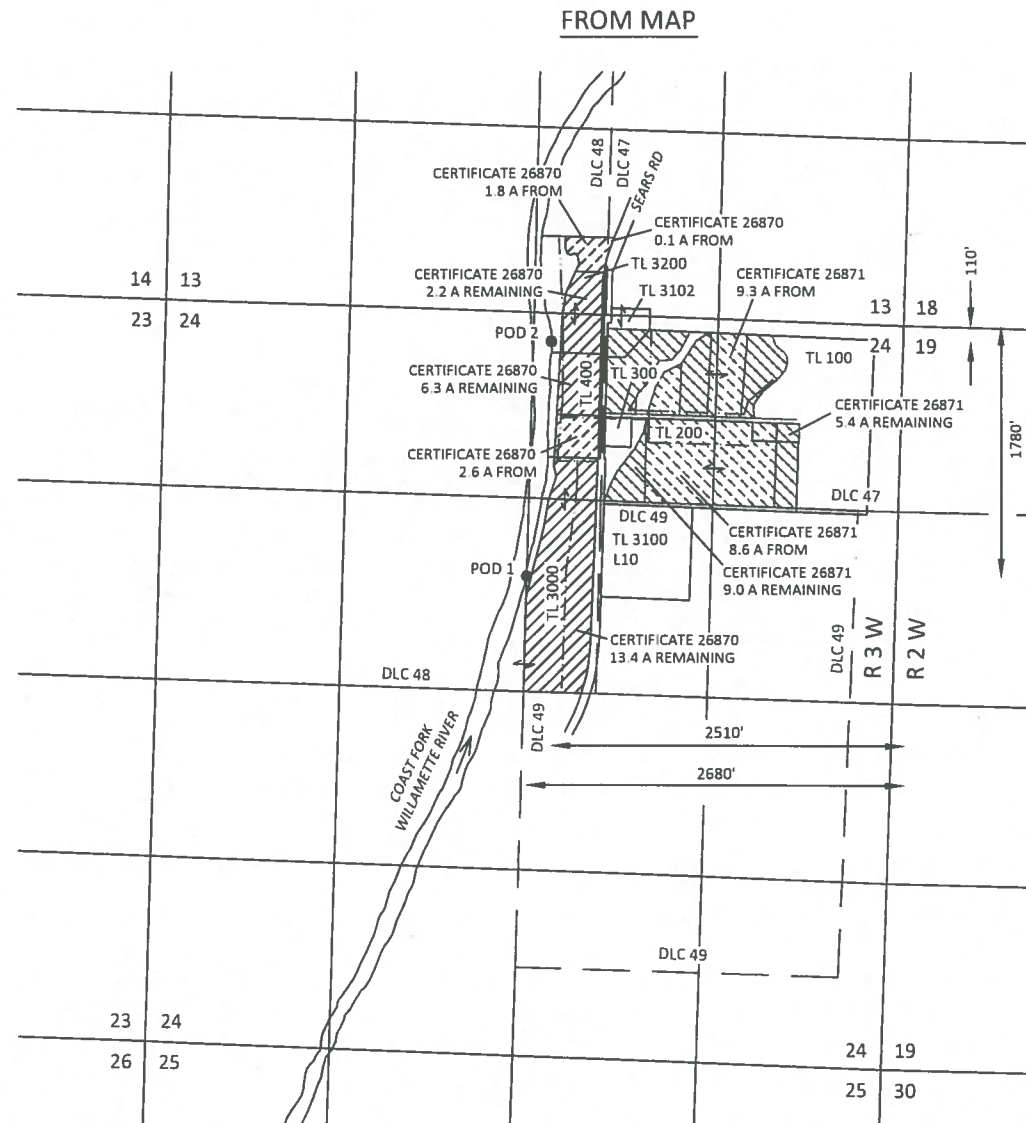
WATER RESOURCES DEPT
SALEM, OREGON

TEMPORARY TRANSFER APPLICATION MAP

Certificates 26870 & 26871

Sections 7 & 18, T17S, R3W, W.M. and Sections 13 & 24, T19S, R3W, W.M., Lane County

Knife River Corporation



EXPLANATION

FROM LANDS

 CERTIFICATE 26870 (4.5 A) IRRIGATION PRIORITY: 5/24/1956

 CERTIFICATE 26871 (17.9 A) IRRIGATION PRIORITY: 5/24/1956

 POINT OF DIVERSION (POD)

 5" MAINLINE (APPROX.)

TO LANDS

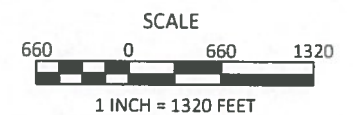
 CERTIFICATE 26870 INDUSTRIAL/COMMERCIAL PRIORITY: 5/24/1956

 CERTIFICATE 26871 INDUSTRIAL/COMMERCIAL PRIORITY: 5/24/1956

REMAINING RIGHTS

 CERTIFICATE 26870 (21.9 A) IRRIGATION PRIORITY: 5/24/1956

 CERTIFICATE 26871 (14.4 A) IRRIGATION PRIORITY: 5/24/1956



June 3, 2015

This map is not intended to provide legal dimensions or locations of property ownership lines

FIGURE 1

SKOOKUM

WATER ASSOCIATES INC

P.O. BOX 80174
PORTLAND, OR 97280
(503) 319-8926

T 12077