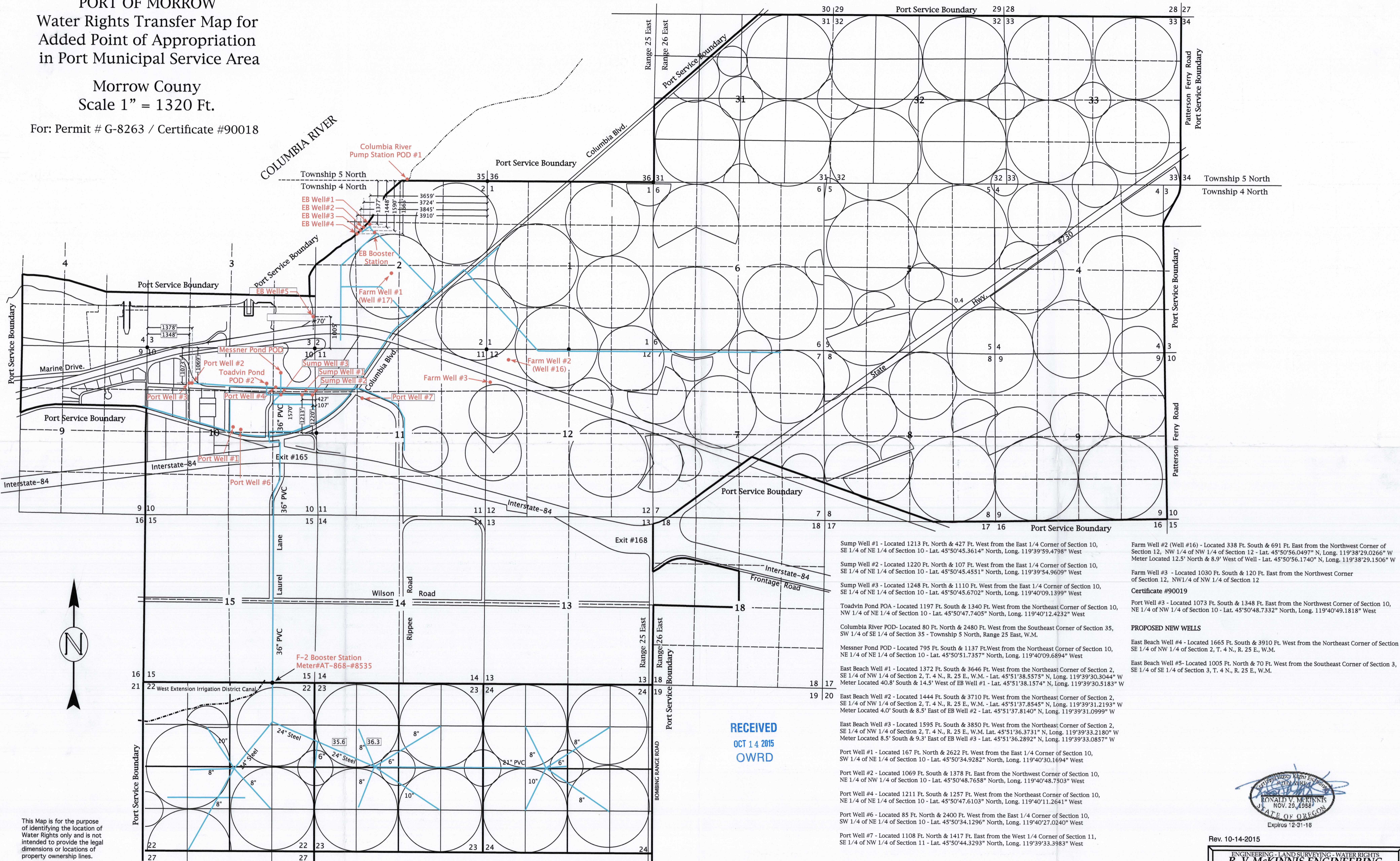


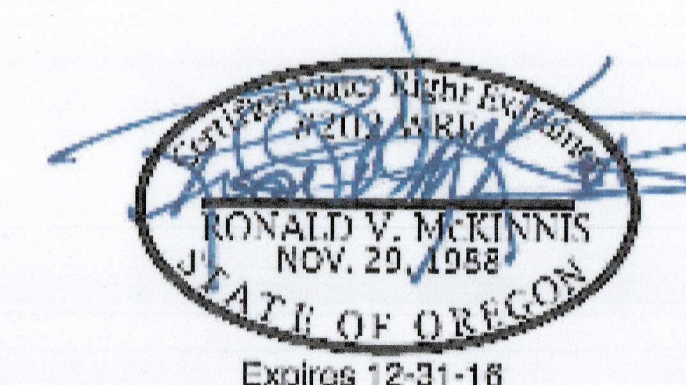
**PORT OF MORROW**  
**Water Rights Transfer Map for**  
**Added Point of Appropriation**  
**in Port Municipal Service Area**

Morrow County  
 Scale 1" = 1320 Ft.

For: Permit # G-8263 / Certificate #90018



RECEIVED  
 OCT 14 2015  
 OWRD



Rev. 10-14-2015

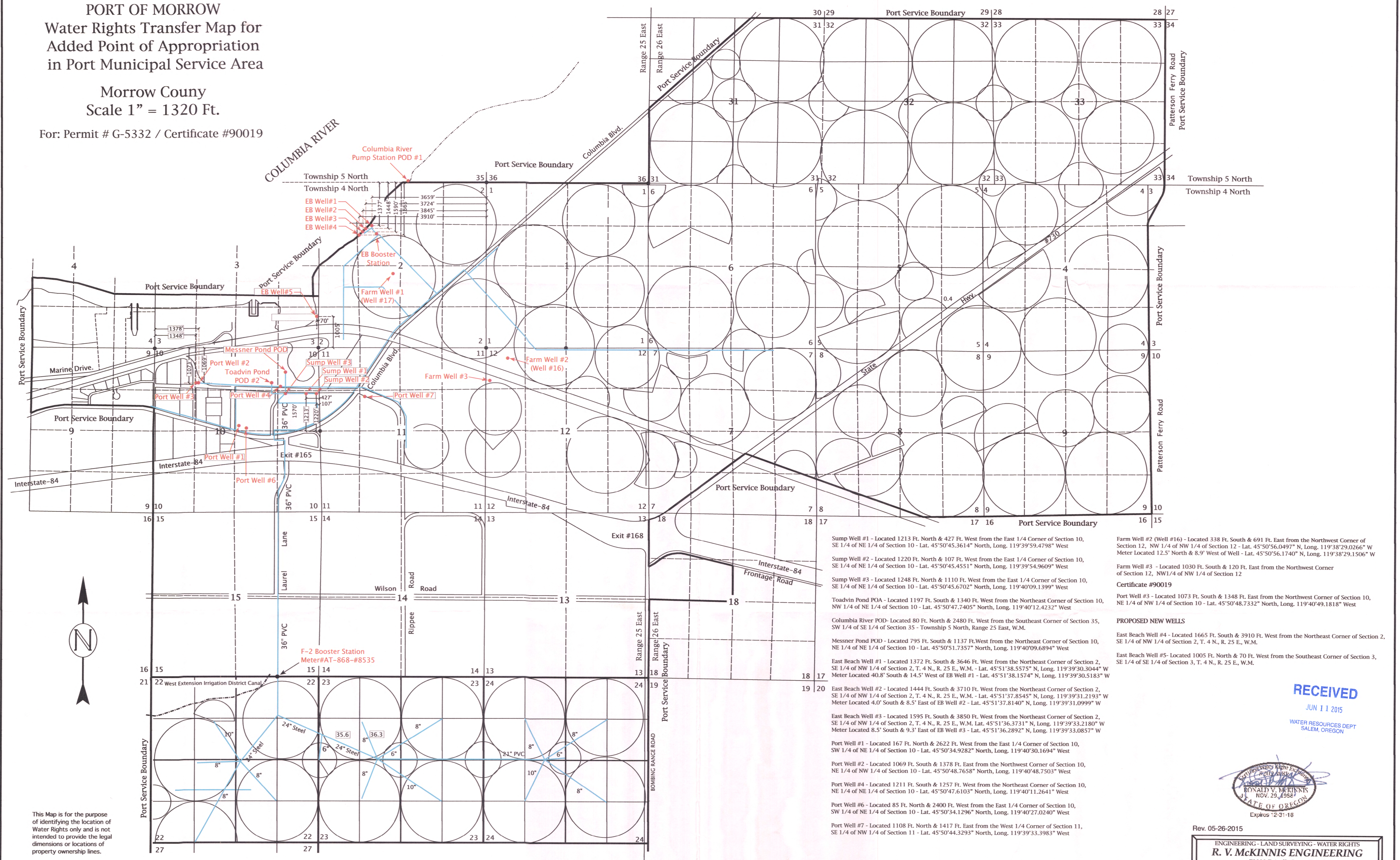
ENGINEERING - LAND SURVEYING - WATER RIGHTS  
**R. V. MCKINNIS ENGINEERING**  
 79980 Prindle Loop Road  
 Hermiston, Oregon 97838  
 (541)-567-2017

This Map is for the purpose of identifying the location of Water Rights only and is not intended to provide the legal dimensions or locations of property ownership lines.

**PORT OF MORROW**  
**Water Rights Transfer Map for**  
**Added Point of Appropriation**  
**in Port Municipal Service Area**

Morrow County  
 Scale 1" = 1320 Ft.

For: Permit # G-5332 / Certificate #90019



- Sump Well #1 - Located 1213 Ft. North & 427 Ft. West from the East 1/4 Corner of Section 10, SE 1/4 of NE 1/4 of Section 10 - Lat. 45°50'45.3614" North, Long. 119°39'59.4798" West
  - Sump Well #2 - Located 1220 Ft. North & 107 Ft. West from the East 1/4 Corner of Section 10, SE 1/4 of NE 1/4 of Section 10 - Lat. 45°50'45.4551" North, Long. 119°39'54.9609" West
  - Sump Well #3 - Located 1248 Ft. North & 1110 Ft. West from the East 1/4 Corner of Section 10, SE 1/4 of NE 1/4 of Section 10 - Lat. 45°50'45.6702" North, Long. 119°40'09.1399" West
  - Toadvin Pond POA - Located 1197 Ft. South & 1340 Ft. West from the Northeast Corner of Section 10, NW 1/4 of NE 1/4 of Section 10 - Lat. 45°50'47.7405" North, Long. 119°40'12.4232" West
  - Columbia River POD - Located 80 Ft. North & 2480 Ft. West from the Southeast Corner of Section 35, SW 1/4 of SE 1/4 of Section 35 - Township 5 North, Range 25 East, W.M.
  - Messner Pond POD - Located 795 Ft. South & 1137 Ft. West from the Northeast Corner of Section 10, NE 1/4 of NE 1/4 of Section 10 - Lat. 45°50'51.7357" North, Long. 119°40'09.6894" West
  - East Beach Well #1 - Located 1372 Ft. South & 3646 Ft. West from the Northeast Corner of Section 2, SE 1/4 of NW 1/4 of Section 2, T. 4 N., R. 25 E., W.M. - Lat. 45°51'38.5575" N, Long. 119°39'30.3044" W Meter Located 40.8' South & 14.5' West of EB Well #1 - Lat. 45°51'38.1574" N, Long. 119°39'30.5183" W
  - East Beach Well #2 - Located 1444 Ft. South & 3710 Ft. West from the Northeast Corner of Section 2, SE 1/4 of NW 1/4 of Section 2, T. 4 N., R. 25 E., W.M. - Lat. 45°51'37.8545" N, Long. 119°39'31.2193" W Meter Located 4.0' South & 8.5' East of EB Well #2 - Lat. 45°51'37.8140" N, Long. 119°39'31.0999" W
  - East Beach Well #3 - Located 1595 Ft. South & 3850 Ft. West from the Northeast Corner of Section 2, SE 1/4 of NW 1/4 of Section 2, T. 4 N., R. 25 E., W.M. Lat. 45°51'36.3731" N, Long. 119°39'33.2180" W Meter Located 8.5' South & 9.3' East of EB Well #3 - Lat. 45°51'36.2892" N, Long. 119°39'33.0857" W
  - Port Well #1 - Located 167 Ft. North & 2622 Ft. West from the East 1/4 Corner of Section 10, SW 1/4 of NE 1/4 of Section 10 - Lat. 45°50'34.9282" North, Long. 119°40'30.1694" West
  - Port Well #2 - Located 1069 Ft. South & 1378 Ft. East from the Northwest Corner of Section 10, NE 1/4 of NW 1/4 of Section 10 - Lat. 45°50'48.7658" North, Long. 119°40'48.7503" West
  - Port Well #4 - Located 1211 Ft. South & 1257 Ft. West from the Northeast Corner of Section 10, NE 1/4 of NE 1/4 of Section 10 - Lat. 45°50'47.6103" North, Long. 119°40'11.2641" West
  - Port Well #6 - Located 85 Ft. North & 2400 Ft. West from the East 1/4 Corner of Section 10, SW 1/4 of NE 1/4 of Section 10 - Lat. 45°50'34.1296" North, Long. 119°40'27.0240" West
  - Port Well #7 - Located 1108 Ft. North & 1417 Ft. East from the West 1/4 Corner of Section 11, SE 1/4 of NW 1/4 of Section 11 - Lat. 45°50'44.3293" North, Long. 119°39'33.3983" West
  - Farm Well #2 (Well #16) - Located 338 Ft. South & 691 Ft. East from the Northwest Corner of Section 12, NW 1/4 of NW 1/4 of Section 12 - Lat. 45°50'56.0497" N, Long. 119°38'29.0266" W Meter Located 12.5' North & 8.9' West of Well - Lat. 45°50'56.1740" N, Long. 119°38'29.1506" W
  - Farm Well #3 - Located 1030 Ft. South & 120 Ft. East from the Northwest Corner of Section 12, NW 1/4 of NW 1/4 of Section 12
- Certificate #90019**
- Port Well #3 - Located 1073 Ft. South & 1348 Ft. East from the Northwest Corner of Section 10, NE 1/4 of NW 1/4 of Section 10 - Lat. 45°50'48.7332" North, Long. 119°40'49.1818" West
- PROPOSED NEW WELLS**
- East Beach Well #4 - Located 1665 Ft. South & 3910 Ft. West from the Northeast Corner of Section 2, SE 1/4 of NW 1/4 of Section 2, T. 4 N., R. 25 E., W.M.
  - East Beach Well #5 - Located 1005 Ft. North & 70 Ft. West from the Southeast Corner of Section 3, SE 1/4 of SE 1/4 of Section 3, T. 4 N., R. 25 E., W.M.

This Map is for the purpose of identifying the location of Water Rights only and is not intended to provide the legal dimensions or locations of property ownership lines.

**RECEIVED**  
 JUN 11 2015  
 WATER RESOURCES DEPT  
 SALEM, OREGON



Rev. 05-26-2015

ENGINEERING - LAND SURVEYING - WATER RIGHTS  
**R. V. McKINNIS ENGINEERING**  
 79980 Prindle Loop Road  
 Hermiston, Oregon 97838  
 (541) -567-2017

**PORT OF MORROW**  
**Water Rights Transfer Map for**  
**Added Point of Appropriation**  
**in Port Municipal Service Area**

Morrow County  
 Scale 1" = 1320 Ft.

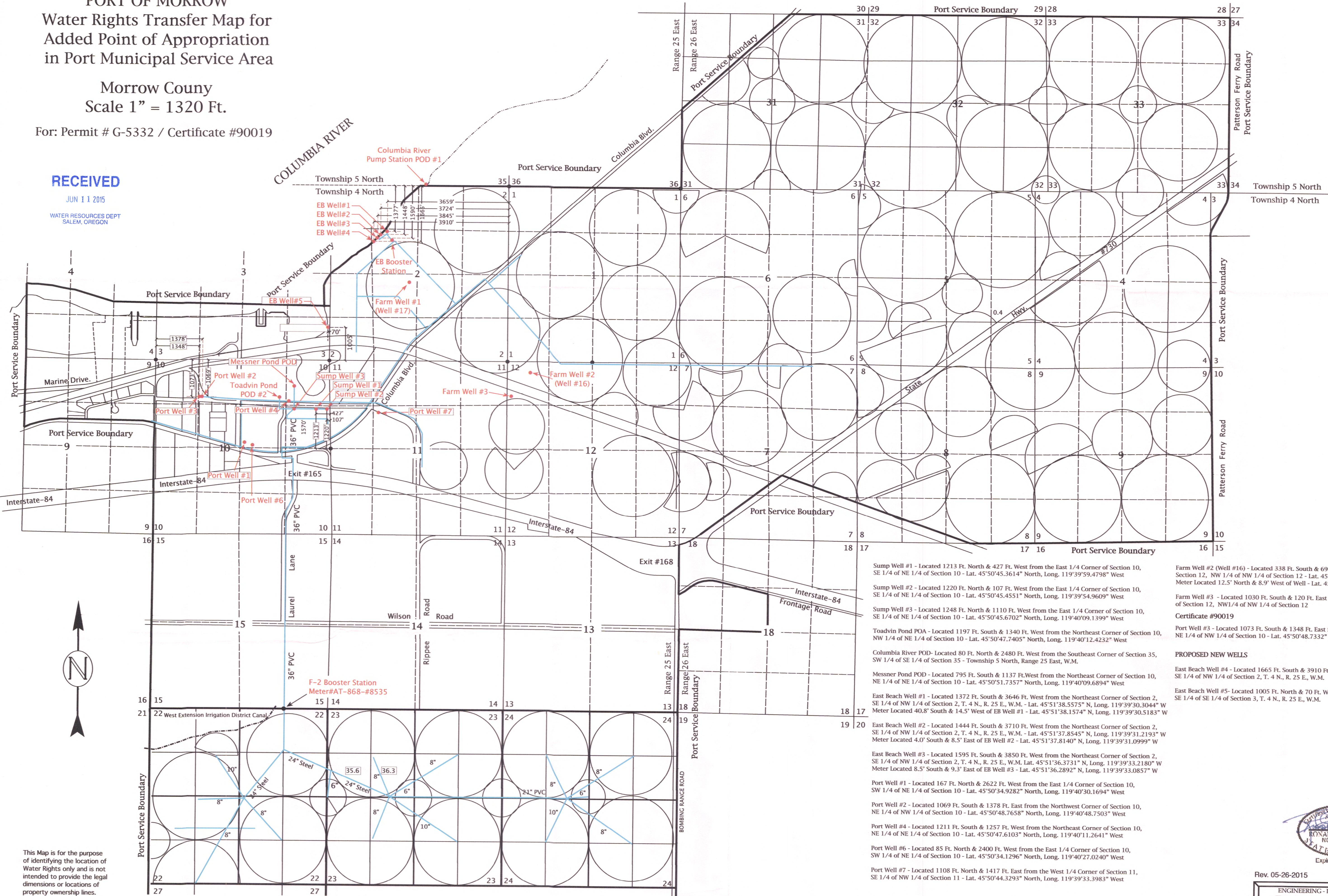
For: Permit # G-5332 / Certificate #90019

**RECEIVED**

JUN 11 2015

WATER RESOURCES DEPT  
 SALEM, OREGON

**COLUMBIA RIVER**



- Sump Well #1 - Located 1213 Ft. North & 427 Ft. West from the East 1/4 Corner of Section 10, SE 1/4 of NE 1/4 of Section 10 - Lat. 45°50'45.3614" North, Long. 119°39'59.4798" West
- Sump Well #2 - Located 1220 Ft. North & 107 Ft. West from the East 1/4 Corner of Section 10, SE 1/4 of NE 1/4 of Section 10 - Lat. 45°50'45.4551" North, Long. 119°39'54.9609" West
- Sump Well #3 - Located 1248 Ft. North & 1110 Ft. West from the East 1/4 Corner of Section 10, NW 1/4 of NE 1/4 of Section 10 - Lat. 45°50'45.6702" North, Long. 119°40'09.1399" West
- Toadvin Pond POA - Located 1197 Ft. South & 1340 Ft. West from the Northeast Corner of Section 10, NW 1/4 of NE 1/4 of Section 10 - Lat. 45°50'47.7405" North, Long. 119°40'12.4232" West
- Columbia River POD - Located 80 Ft. North & 2480 Ft. West from the Southeast Corner of Section 35, SW 1/4 of SE 1/4 of Section 35 - Township 5 North, Range 25 East, W.M.
- Messner Pond POD - Located 795 Ft. South & 1137 Ft. West from the Northeast Corner of Section 10, NE 1/4 of NE 1/4 of Section 10 - Lat. 45°50'51.7357" North, Long. 119°40'09.6894" West
- East Beach Well #1 - Located 1372 Ft. South & 3646 Ft. West from the Northeast Corner of Section 2, SE 1/4 of NW 1/4 of Section 2, T. 4 N., R. 25 E., W.M. - Lat. 45°51'37.8545" N, Long. 119°39'31.2193" W Meter Located 40.8' South & 14.5' West of EB Well #1 - Lat. 45°51'38.1574" N, Long. 119°39'30.5183" W
- East Beach Well #2 - Located 1444 Ft. South & 3710 Ft. West from the Northeast Corner of Section 2, SE 1/4 of NW 1/4 of Section 2, T. 4 N., R. 25 E., W.M. - Lat. 45°51'37.8545" N, Long. 119°39'31.2193" W Meter Located 4.0' South & 8.5' East of EB Well #2 - Lat. 45°51'37.8140" N, Long. 119°39'31.0999" W
- East Beach Well #3 - Located 1595 Ft. South & 3850 Ft. West from the Northeast Corner of Section 2, SE 1/4 of NW 1/4 of Section 2, T. 4 N., R. 25 E., W.M. Lat. 45°51'36.3731" N, Long. 119°39'33.2180" W Meter Located 8.5' South & 9.3' East of EB Well #3 - Lat. 45°51'36.2892" N, Long. 119°39'33.0857" W
- Port Well #1 - Located 167 Ft. North & 2622 Ft. West from the East 1/4 Corner of Section 10, SW 1/4 of NE 1/4 of Section 10 - Lat. 45°50'34.9282" North, Long. 119°40'30.1694" West
- Port Well #2 - Located 1069 Ft. South & 1378 Ft. East from the Northwest Corner of Section 10, NE 1/4 of NW 1/4 of Section 10 - Lat. 45°50'48.7658" North, Long. 119°40'48.7503" West
- Port Well #4 - Located 1211 Ft. South & 1257 Ft. West from the Northeast Corner of Section 10, NE 1/4 of NE 1/4 of Section 10 - Lat. 45°50'47.6103" North, Long. 119°40'11.2641" West
- Port Well #6 - Located 85 Ft. North & 2400 Ft. West from the East 1/4 Corner of Section 10, SW 1/4 of NE 1/4 of Section 10 - Lat. 45°50'34.1296" North, Long. 119°40'27.0240" West
- Port Well #7 - Located 1108 Ft. North & 1417 Ft. East from the West 1/4 Corner of Section 11, SE 1/4 of NW 1/4 of Section 11 - Lat. 45°50'44.3293" North, Long. 119°39'33.3983" West
- Farm Well #2 (Well #16) - Located 338 Ft. South & 691 Ft. East from the Northwest Corner of Section 12, NW 1/4 of NW 1/4 of Section 12 - Lat. 45°50'56.0497" N, Long. 119°38'29.0266" W Meter Located 12.5' North & 8.9' West of Well - Lat. 45°50'56.1740" N, Long. 119°38'29.1506" W
- Farm Well #3 - Located 1030 Ft. South & 120 Ft. East from the Northwest Corner of Section 12, NW 1/4 of NW 1/4 of Section 12
- Port Well #3 - Located 1073 Ft. South & 1348 Ft. East from the Northwest Corner of Section 10, NE 1/4 of NW 1/4 of Section 10 - Lat. 45°50'48.7332" North, Long. 119°40'49.1818" West

**Certificate #90019**  
 Port Well #3 - Located 1073 Ft. South & 1348 Ft. East from the Northwest Corner of Section 10, NE 1/4 of NW 1/4 of Section 10 - Lat. 45°50'48.7332" North, Long. 119°40'49.1818" West

**PROPOSED NEW WELLS**  
 East Beach Well #4 - Located 1665 Ft. South & 3910 Ft. West from the Northeast Corner of Section 2, SE 1/4 of NW 1/4 of Section 2, T. 4 N., R. 25 E., W.M.  
 East Beach Well #5 - Located 1005 Ft. North & 70 Ft. West from the Southeast Corner of Section 3, SE 1/4 of SE 1/4 of Section 3, T. 4 N., R. 25 E., W.M.

This Map is for the purpose of identifying the location of Water Rights only and is not intended to provide the legal dimensions or locations of property ownership lines.



Rev. 05-26-2015

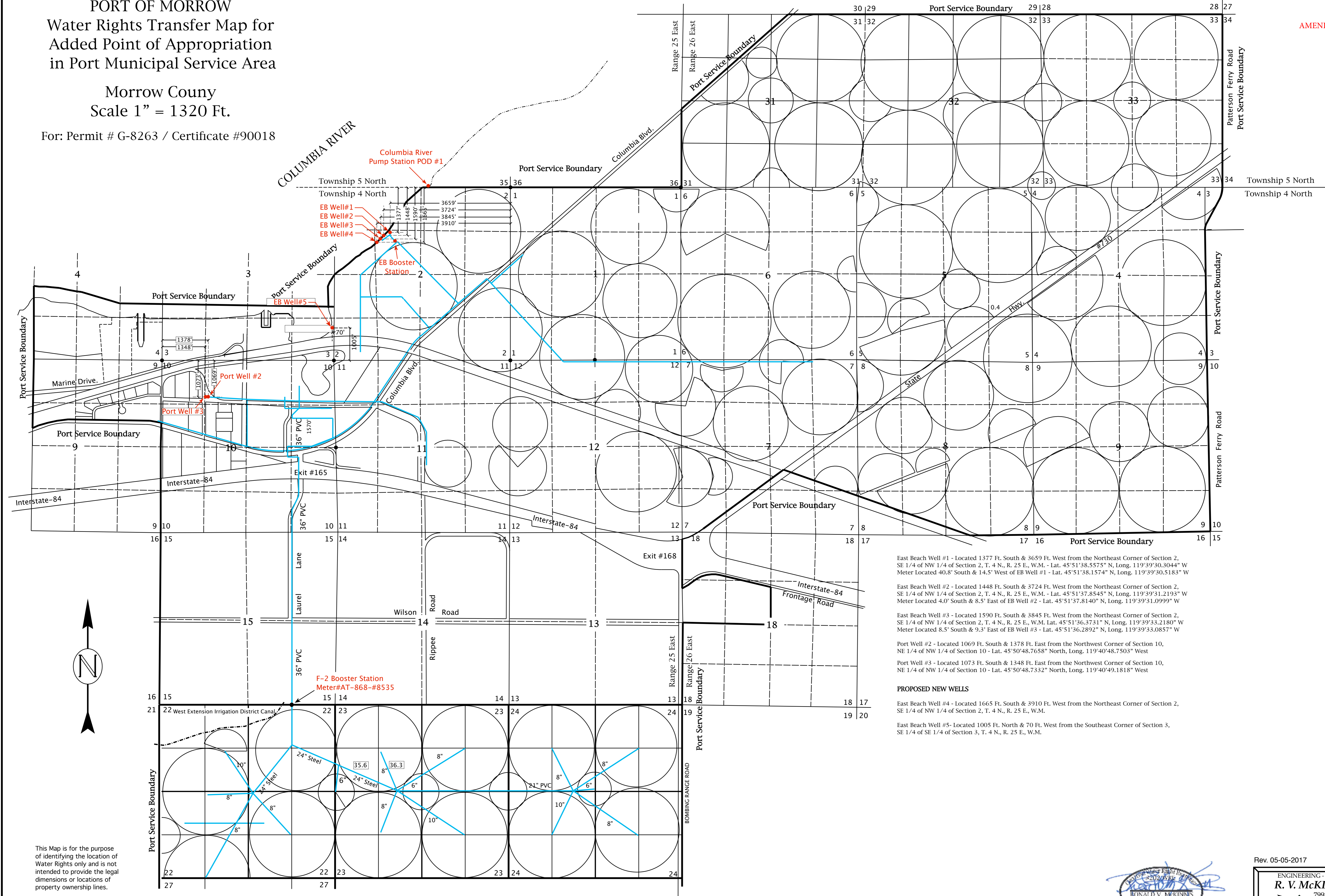
ENGINEERING - LAND SURVEYING - WATER RIGHTS  
**R. V. McKINNIS ENGINEERING**  
 79980 Prindle Loop Road  
 Hermiston, Oregon 97838  
 (541)-567-2017

PORT OF MORROW  
Water Rights Transfer Map for  
Added Point of Appropriation  
in Port Municipal Service Area

Morrow County  
Scale 1" = 1320 Ft.

For: Permit # G-8263 / Certificate #90018

AMENDED



East Beach Well #1 - Located 1377 Ft. South & 3659 Ft. West from the Northeast Corner of Section 2, SE 1/4 of NW 1/4 of Section 2, T. 4 N., R. 25 E., W.M. - Lat. 45°51'38.5575" N, Long. 119°39'30.3044" W  
Meter Located 40.8' South & 14.5' West of EB Well #1 - Lat. 45°51'38.1574" N, Long. 119°39'30.5183" W

East Beach Well #2 - Located 1448 Ft. South & 3724 Ft. West from the Northeast Corner of Section 2, SE 1/4 of NW 1/4 of Section 2, T. 4 N., R. 25 E., W.M. - Lat. 45°51'37.8545" N, Long. 119°39'31.2193" W  
Meter Located 4.0' South & 8.5' East of EB Well #2 - Lat. 45°51'37.8140" N, Long. 119°39'31.0999" W

East Beach Well #3 - Located 1590 Ft. South & 3845 Ft. West from the Northeast Corner of Section 2, SE 1/4 of NW 1/4 of Section 2, T. 4 N., R. 25 E., W.M. Lat. 45°51'36.3731" N, Long. 119°39'33.2180" W  
Meter Located 8.5' South & 9.3' East of EB Well #3 - Lat. 45°51'36.2892" N, Long. 119°39'33.0857" W

Port Well #2 - Located 1069 Ft. South & 1378 Ft. East from the Northwest Corner of Section 10, NE 1/4 of NW 1/4 of Section 10 - Lat. 45°50'48.7658" North, Long. 119°40'48.7503" West

Port Well #3 - Located 1073 Ft. South & 1348 Ft. East from the Northwest Corner of Section 10, NE 1/4 of NW 1/4 of Section 10 - Lat. 45°50'48.7332" North, Long. 119°40'49.1818" West

**PROPOSED NEW WELLS**

East Beach Well #4 - Located 1665 Ft. South & 3910 Ft. West from the Northeast Corner of Section 2, SE 1/4 of NW 1/4 of Section 2, T. 4 N., R. 25 E., W.M.

East Beach Well #5 - Located 1005 Ft. North & 70 Ft. West from the Southeast Corner of Section 3, SE 1/4 of SE 1/4 of Section 3, T. 4 N., R. 25 E., W.M.



This Map is for the purpose of identifying the location of Water Rights only and is not intended to provide the legal dimensions or locations of property ownership lines.



Rev. 05-05-2017

ENGINEERING - LAND SURVEYING - WATER RIGHTS  
**R. V. McKINNIS ENGINEERING**  
79980 Prindle Loop Road  
Hermiston, Oregon 97838  
(541) -567-2017