

THIS MAP WAS PREPARED FOR
ASSESSMENT PURPOSE ONLY

SECTION 6 T6S R6W W.M.
YAMHILL COUNTY

1" = 400'

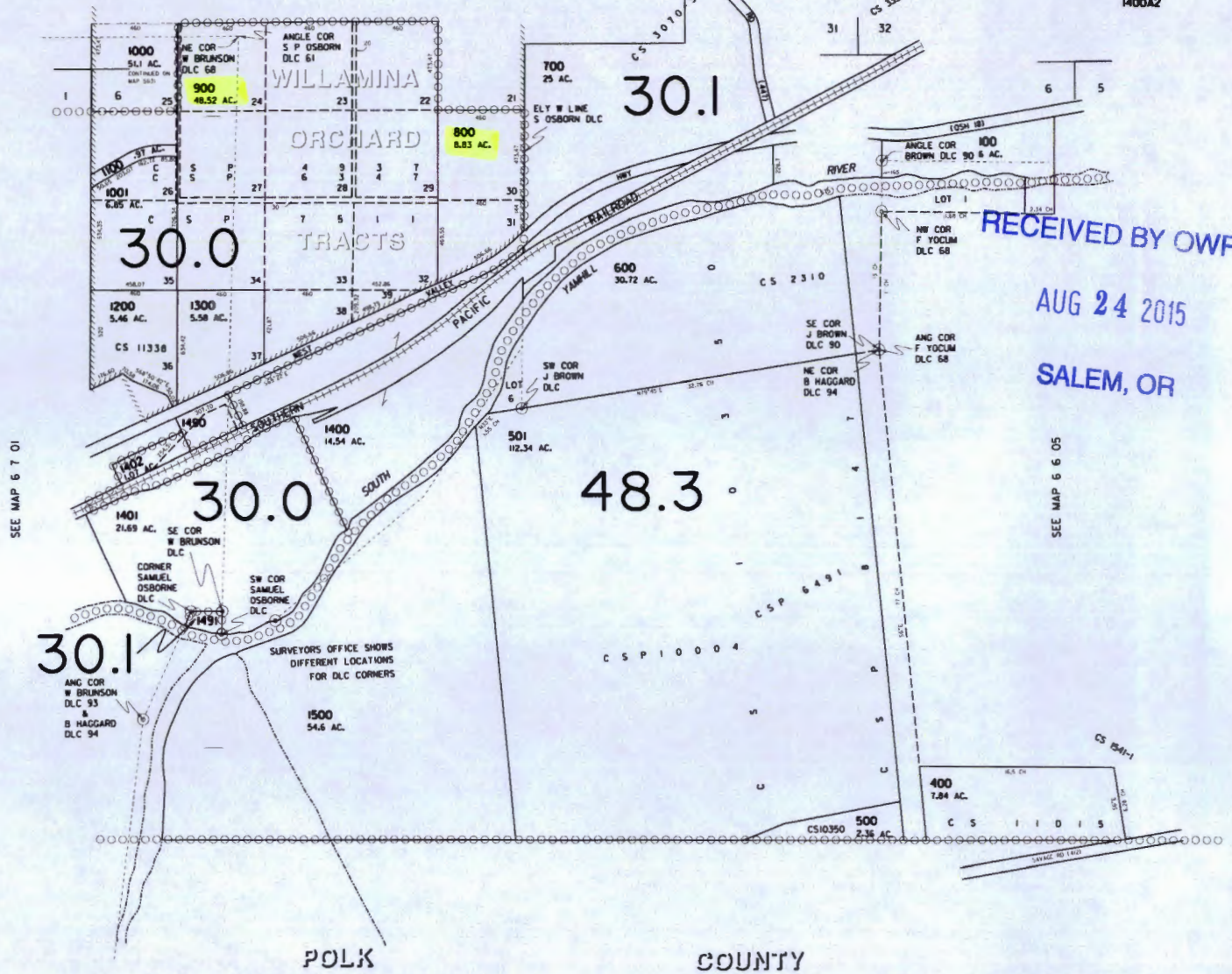
6 6 06

SEE MAP 5 6 31

SEE MAP 5 6 32

CANCELLED
200
300
1400A2

36 | 31



RECEIVED BY OWRD
AUG 24 2015
SALEM, OR

SEE MAP 6 7 01

SEE MAP 6 6 05

30.1
ANG COR W BRUNSON DLC 93 & B HAGGARD DLC 94
1491
SURVEYORS OFFICE SHOWS DIFFERENT LOCATIONS FOR DLC CORNERS
1500 54.6 AC.

1 | 6
2 | 7

REVISED 5-15-06 DH

T 12153

6 | 5
7 | 8

6 6 06

THIS MAP WAS PREPARED FOR
ASSESSMENT PURPOSE ONLY

SECTION 6 T6S R6W W.M.
YAMHILL COUNTY

1" = 400'

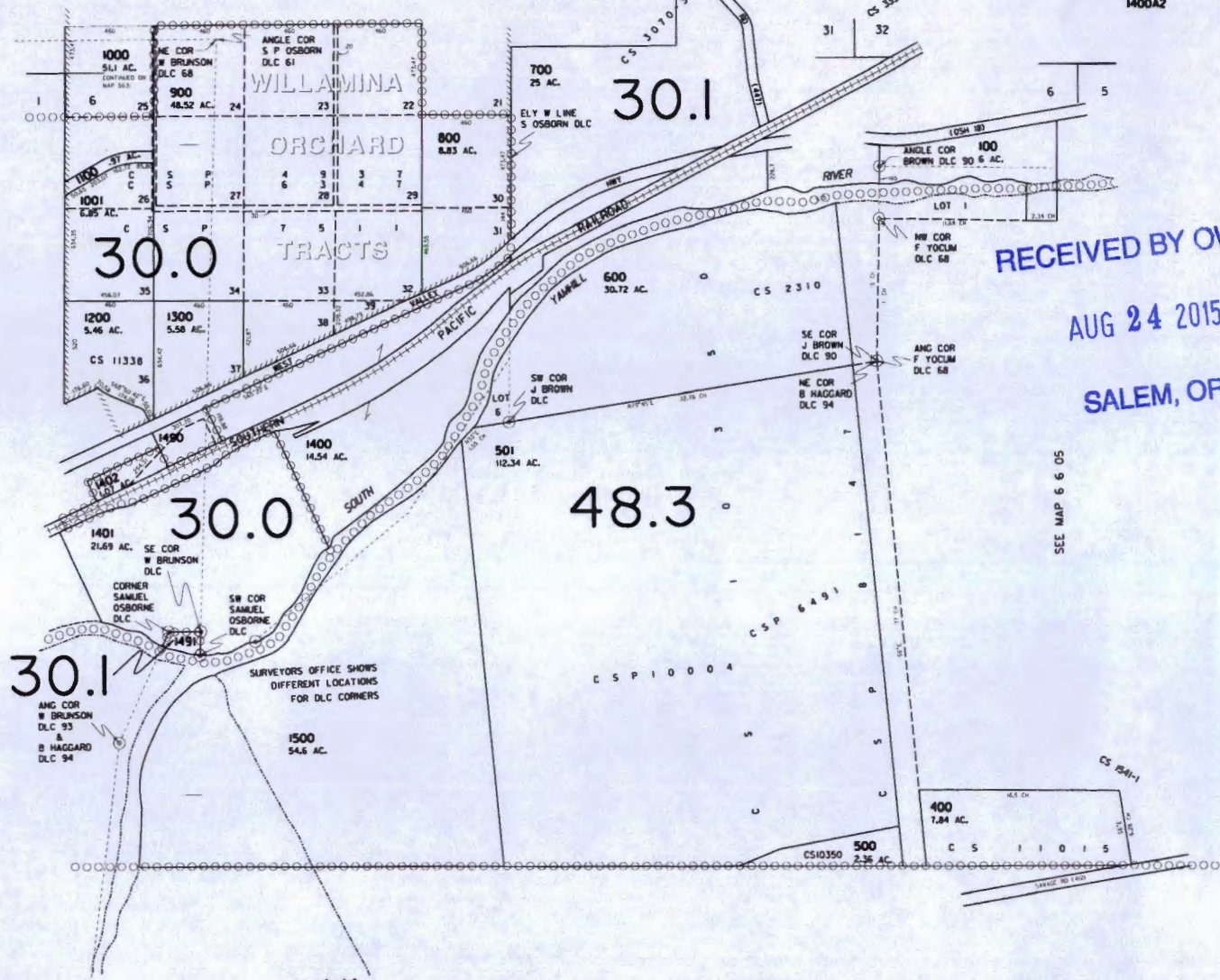
6 6 06

SEE MAP 5 6 31

SEE MAP 5 6 32

CANCELLED
200
300
400A2

36 | 31



RECEIVED BY OWRD
AUG 24 2015
SALEM, OR

SEE MAP 6 7 01

SEE MAP 6 6 05

1 | 6
2 | 7

REVISED 5-15-06 BH

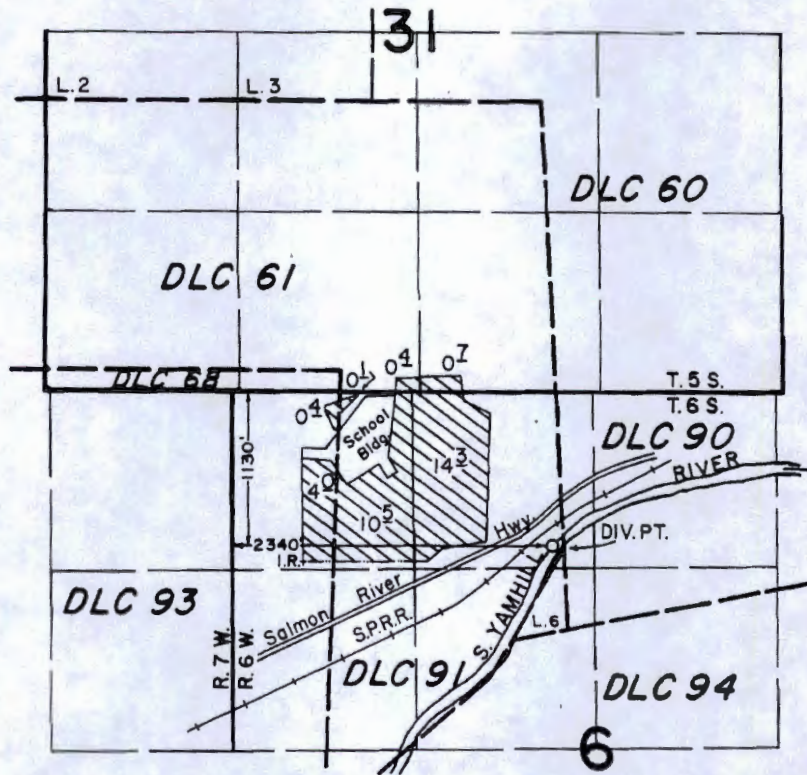
6 | 5
7 | 8

6 6 06

T 12153



T.5 & 6 S., R.6 & 7 W., W.M.



SCALE: 1" = 1320'

FINAL PROOF SURVEY
UNDER

Application No. 63327.. Permit No. 46422.....

IN NAME OF

WILLAMINA SCHOOL DISTRICT 30-J

Surveyed JUNE 1... 1989, by T.M. WARREN...

RECEIVED BY OWRD

AUG 18 2015

SALEM, OR

9-7-89
41071-178-02R
PTS

1 12153

THIS MAP WAS PREPARED FOR
ASSESSMENT PURPOSE ONLY

SECTION 6 T6S R6W W.M.
YAMHILL COUNTY
1" = 400'

6 6 06

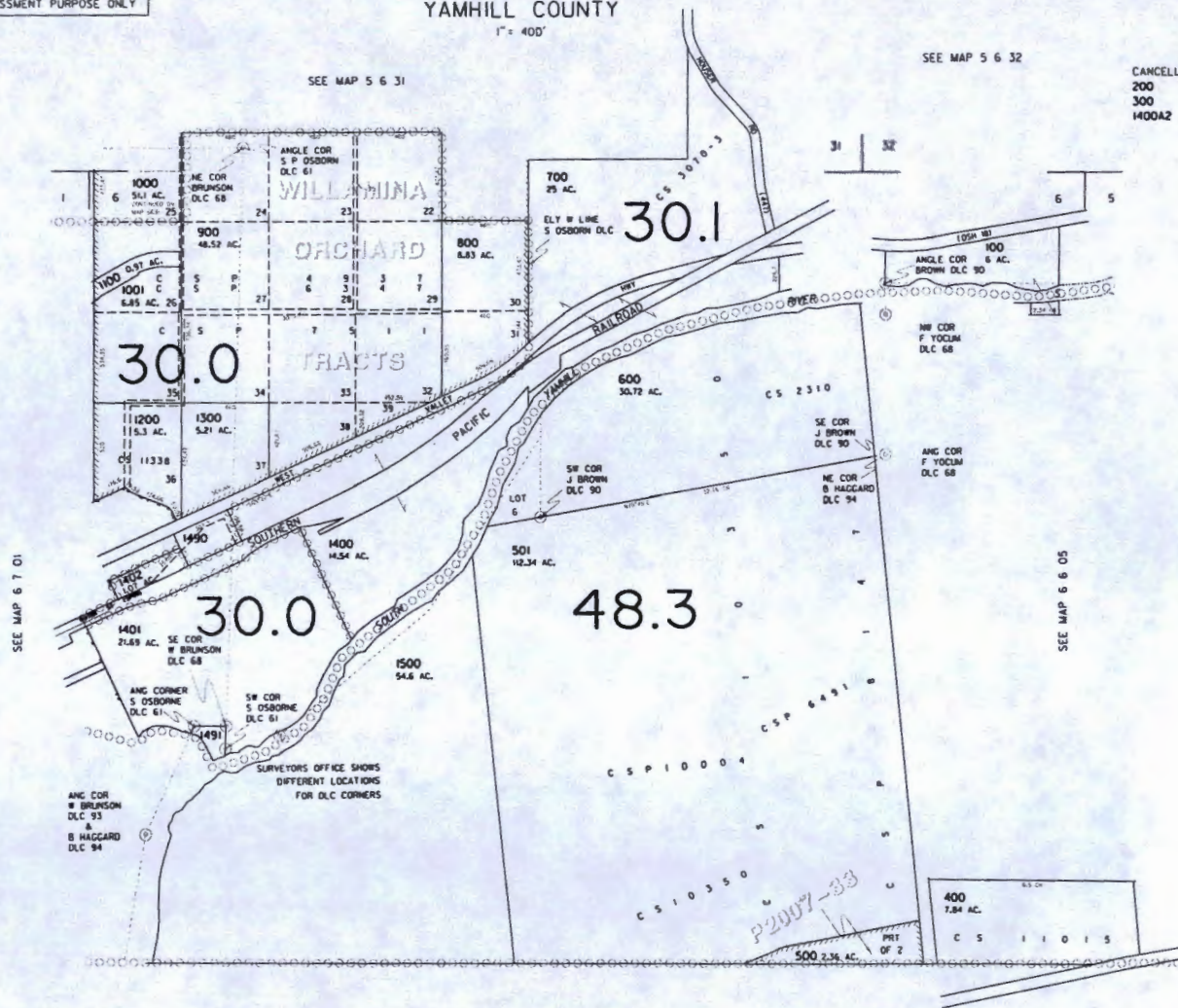
SEE MAP 5 6 31

SEE MAP 5 6 32

CANCELLED
200
300
1400A2

36 | 31

31 | 32



POLK

COUNTY

T 12153

REV 502 F-04-14 BH

6 6 06

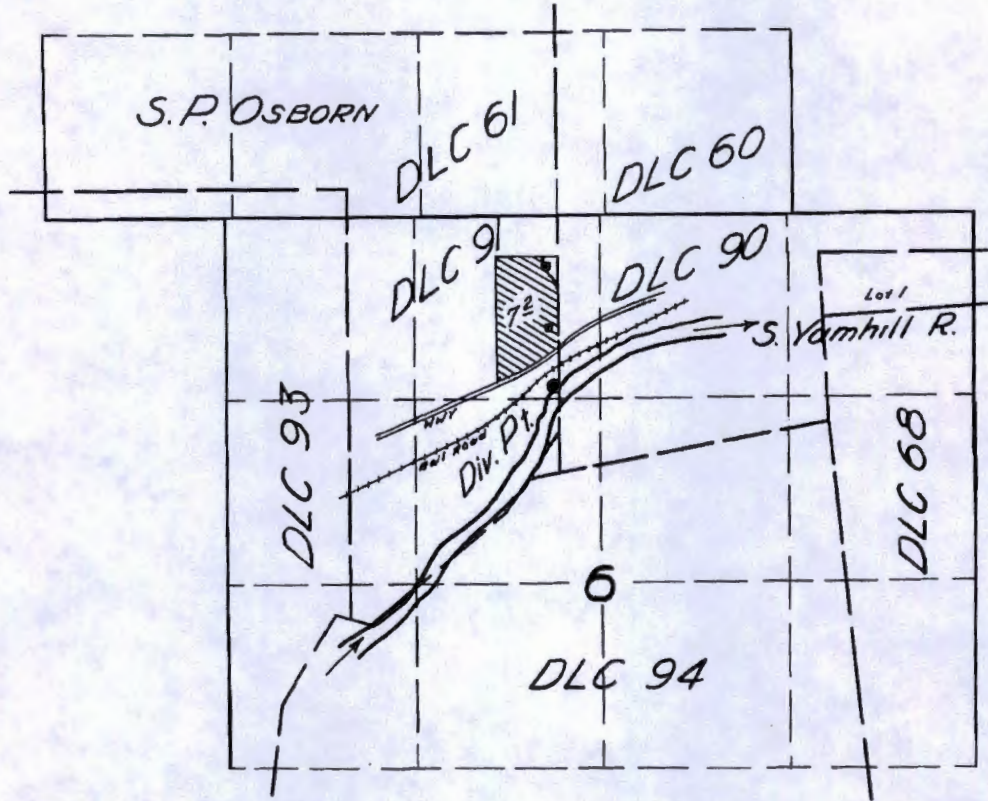
RECEIVED BY OWRD

AUG 18 2015

SALEM, OR

FROM

T. 5 & 6 S. R. 6 W. W. M.



FINAL PROOF SURVEY

UNDER

Application No. 27730 Permit No. 21842

IN NAME OF

RALPH E. BUNN

Surveyed 9 Mar. 1956, by

RECEIVED BY OWRD

AUG 18 2015

SALEM, OR

T 12153


DFQ-3D-120

T 6 S R 6 W SEC 6

1" = 600'

TO LANDS



 = TO LANDS

● = P.O.D.

1130' South and 2340' East
From NW Corner of Section 6

RECEIVED

SEP 01 2015

WATER RESOURCES DEPT
SALEM, OREGON

T 12153