

RECEIVED

JUL 22 1980

WATER RESOURCES DEPT.
SALEM, OREGON

RECEIVED

AUG 11 1980

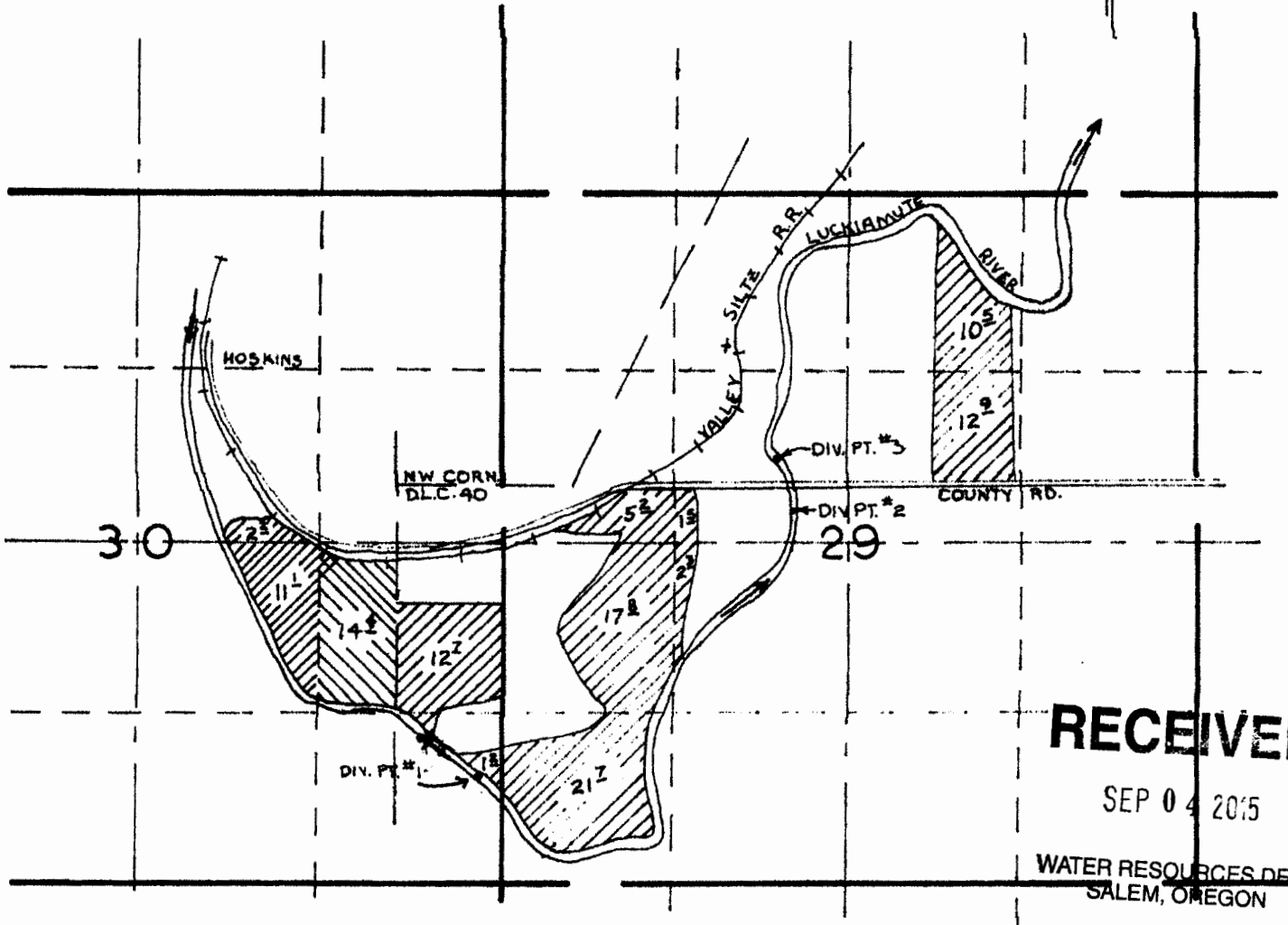
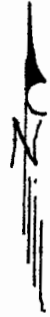
WATER RESOURCES DEPT.
SALEM, OREGON

T-4569

Platt Farms Temporary Transfer

FROM Lands

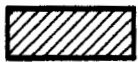
T. 10 S, R. 6 W, W.M.



RECEIVED

SEP 04 2015

WATER RESOURCES DEPT.
SALEM, OREGON



POU for C 76441

GRACEN L. BUSH

Div. Pt. #1 - SE1/4 SE1/4, as projected within Watson DLC 40, Section 30, T. 10 S, R. 6 W, W.M.;
2200' S and 620' E from the NW Corner of Watson DLC 40.

Div. Pt. #2 - SE1/4 NW1/4, as projected within Watson DLC 40, Section 29, T. 10 S, R. 6 W, W.M.;
170' S and 2940' E from the NW Corner of Watson DLC 40.

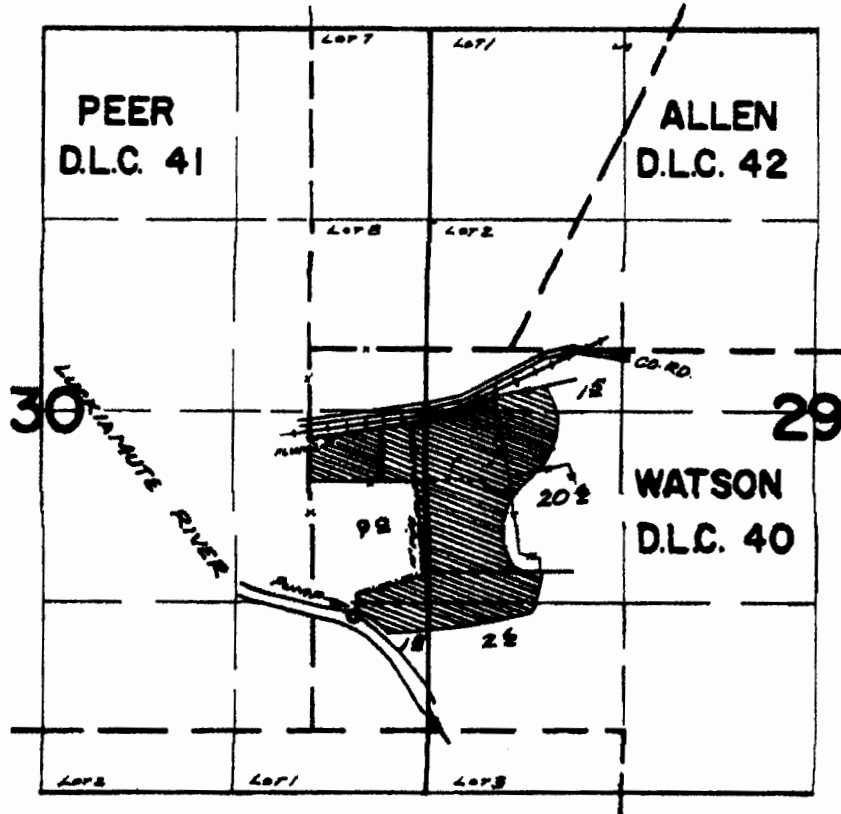
Div. Pt. #3 - SE1/4 NW1/4, as projected within Allen DLC 42, Section 29, T. 10 S, R. 6 W, W.M.;
200' N and 2950' E from the NW Corner of Watson DLC 40.

scale: 4" = 1 Mile

T 12153

Platt Farms Temporary Transfer

FROM LANDS T.10S.R.6W.W.M.



RECEIVED

SEP 04 2015

WATER RESOURCES DEPT
SALEM, OREGON

**FINAL PROOF SURVEY
UNDER**

Application No. 14125 Permit No. 10203
IN NAME OF

C. L. BUSH

Surveyed Aug 31, 1942, by GEORGE NADENMAN
RE-TIED MAY 8, 1970 by L. E. GOULD

T 12158

RECEIVED

JUL 22 1980
WATER RESOURCES DEPT.
SALEM, OREGON

RECEIVED

AUG 11 1980

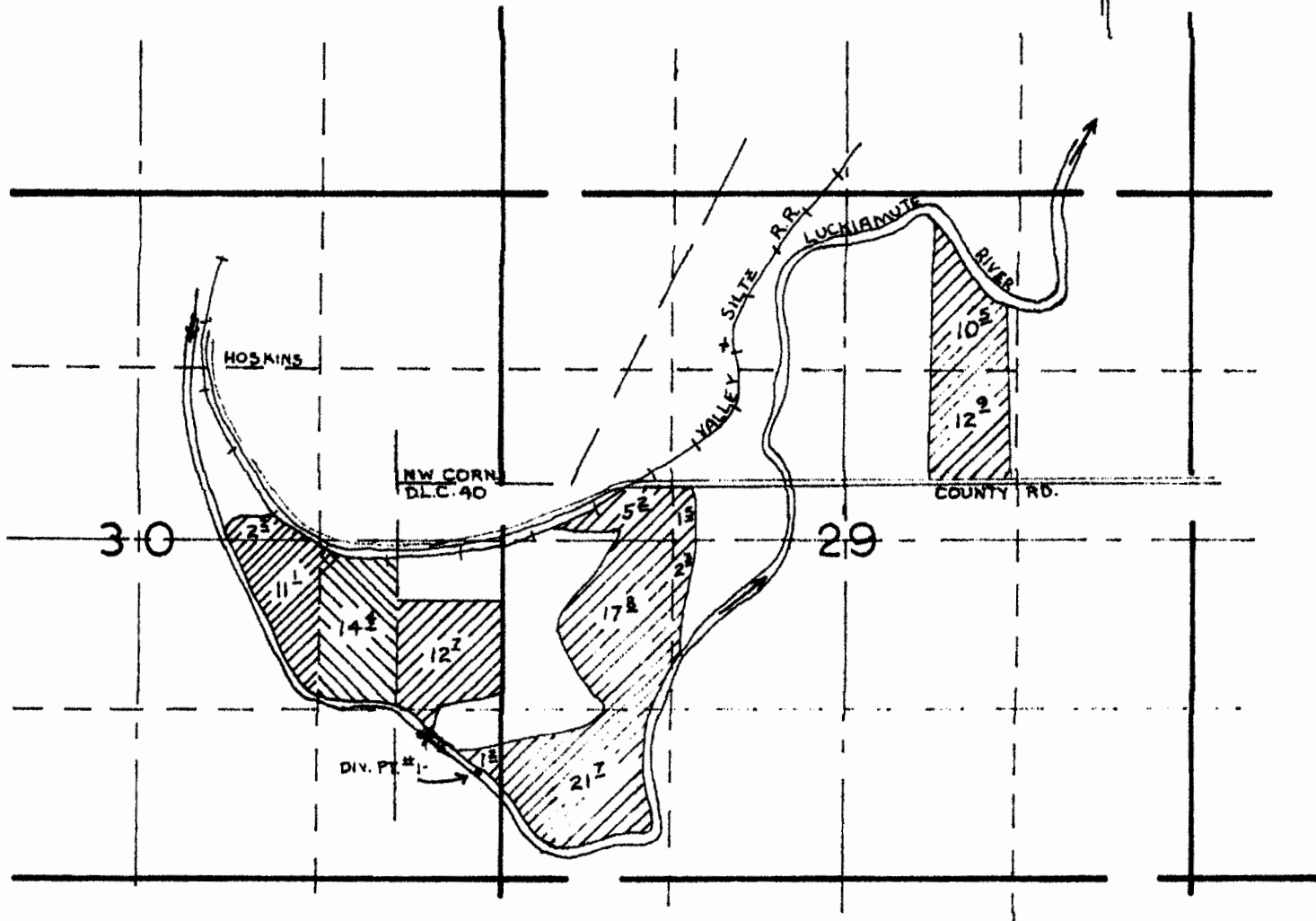
WATER RESOURCES DEPT
SALEM, OREGON

T-4569

Platt Farms Temporary Transfer

FROM Lands

T. 10 S, R. 6 W, W.M.



POU for C 76492

GRACEN L. BUSH

Div. Pt. #1 - SE1/4 SE1/4, as projected within Watson DLC 40, Section 30, T. 10 S, R. 6 W, W.M.;
2200' S and 620' E from the NW Corner of Watson DLC 40.

RECEIVED

SEP 04 2015

scale: 4" = 1 Mile WATER RESOURCES DEPT
SALEM, OREGON

T 12155

T.9S. R.4W. W.M.



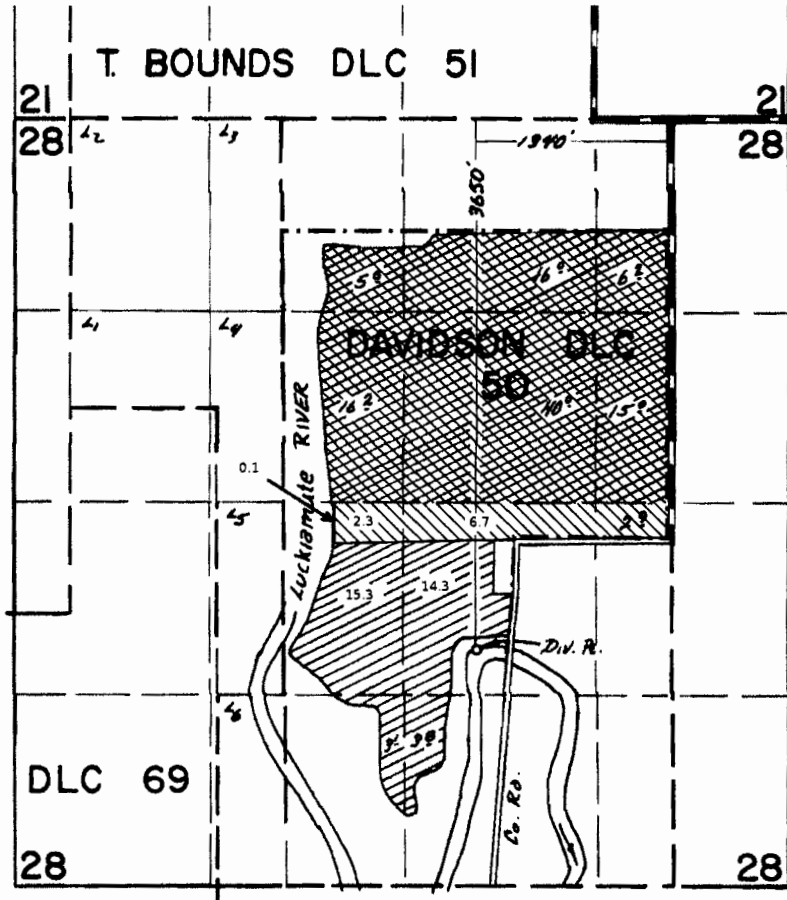
Platt Farms Temporary Transfer Map
TO LANDS

Scale: 1"=1320'

RECEIVED

SEP 04 2015

WATER RESOURCES DEPT
SALEM, OREGON



--- Tax lot 9S
and river 4W 28 TL
200
boundary

Temporary
Transfer POU
C 76441

Temporary
Transfer POU
C 37768

FINAL PROOF SURVEY

UNDER
41713 31202
43131 32224
Application Nos. R-45242 Permit Nos. R-5155
45243 33213

IN NAME OF

DESERT SEED COMPANY INC.

T 12153

Surveyed March 21, 1973, by R. G. MUCKEN

Platt Farms Temporary Transfer Map

TO LANDS

T. 9S. R. 4W. W.M.

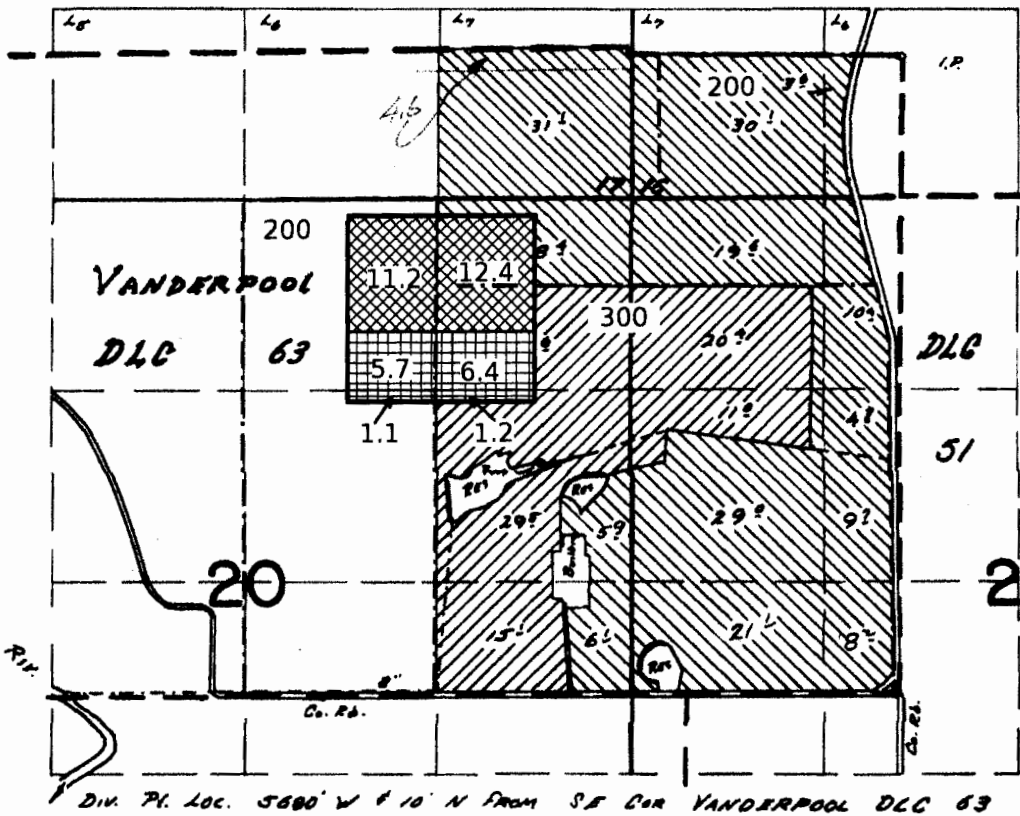
RECEIVED

SEP 04 2015

WATER RESOURCES DEPT
SALEM, OREGON



Scale 1"=1320'



- POU for C 37768
- POU for C 76492

- PRIMARY
- SUPPLEMENTAL

FINAL PROOF SURVEY UNDER

Application No. 48318 Permit No. 35334
IN NAME OF

PATRICK A. ORLE

Surveyed MAY 13 1974, by T. J. PAUL

T 12158