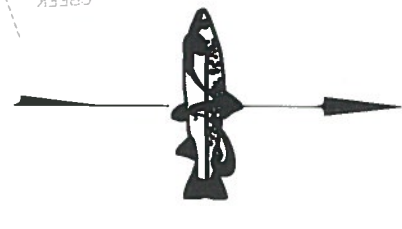
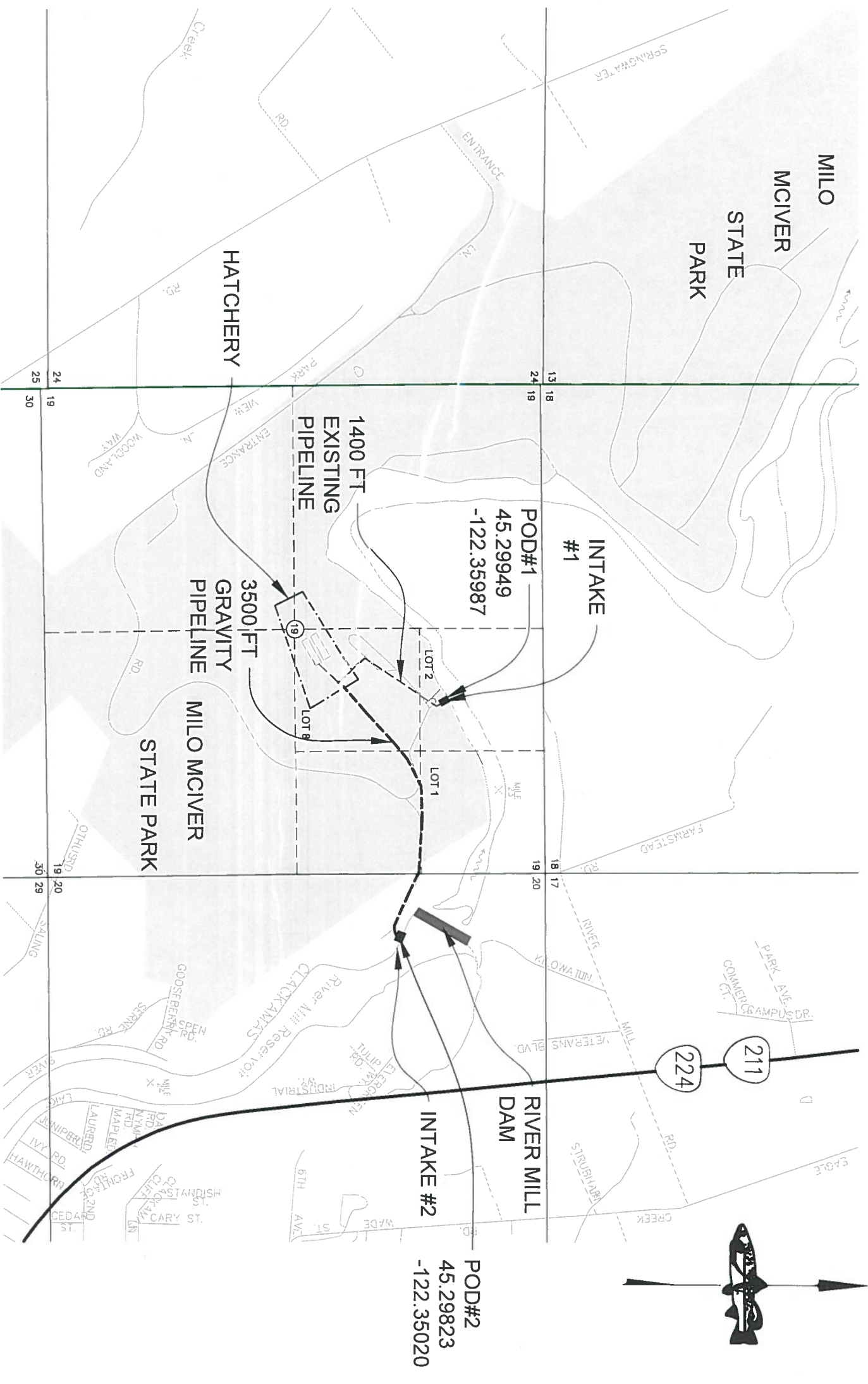


SECTION 19 & 20 T3S, R4E W.M., CLACKAMAS COUNTY, OREGON



1 WATER RIGHT PLAT
 SCALE: 1" = 1320'-0"

OREGON DEPARTMENT OF FISH AND WILDLIFE



RECEIVED

SEP 09 2015

WATER RESOURCES DEPT
 SALEM, OREGON

SCALE: 1" = 1320'
 0' 660' 1320' 2640'
 T 12160

