

LAND OWNERS WATER RESOURCES DEPT
 SALEM, OREGON

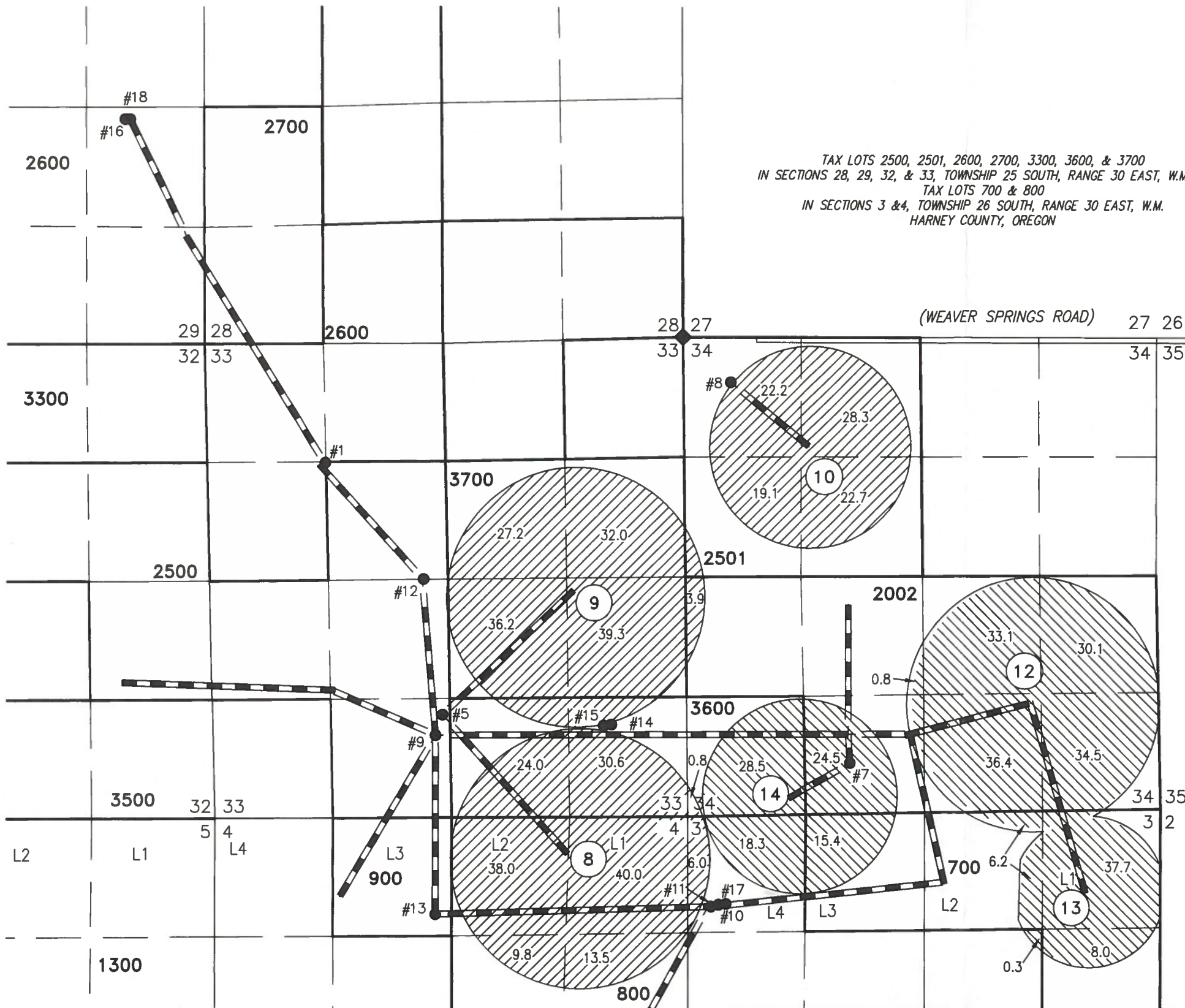
MAR 03 2011

RECEIVED

T 12169

TRANSFER MAP TO ACCOMPANY APPLICATION TO ADD POINTS OF APPROPRIATION FOR RATTLESNAKE LAND & CATTLE

TAX LOTS 2500, 2501, 2600, 2700, 3300, 3600, & 3700
IN SECTIONS 28, 29, 32, & 33, TOWNSHIP 25 SOUTH, RANGE 30 EAST, W.M. &
TAX LOTS 700 & 800
IN SECTIONS 3 & 4, TOWNSHIP 26 SOUTH, RANGE 30 EAST, W.M.
HARNEY COUNTY, OREGON



- #1
WELL #1 (HARN 1094)
1317' SOUTH & 1355' EAST FROM THE
NW CORNER SECTION 33
- #5
WELL #5 (HARN 51146)
4195' SOUTH & 2672' WEST FROM THE
NE CORNER SECTION 33.
- #7
WELL #7 (HARN 51272)
4725' SOUTH & 1877' EAST FROM THE
NW CORNER SECTION 34.
- #8
WELL #8 (HARN 52223)
502' SOUTH & 536' EAST FROM THE NW
CORNER SECTION 34.
- #9
WELL #9 (HARN 51448)
4423' SOUTH & 2750' WEST FROM THE
NE CORNER SECTION 33.
- #10
WELL #10 (HARN 51765)
6310' SOUTH & 415' EAST FROM THE
NW CORNER SECTION 34.
- #11
WELL #11 (HARN 51760)
6340' SOUTH & 330' EAST FROM THE
NW CORNER SECTION 34.
- #12
WELL #12 (HARN 51817)
2690' SOUTH & 28900' WEST FROM THE
NE CORNER SECTION 33.
- #13
WELL #13 (HARN 51445)
6415' SOUTH & 2745' WEST FROM THE
NE CORNER SECTION 33.
- #14
WELL #14 (HARN 51871)
4314' SOUTH & 870' WEST FROM THE
NE CORNER SECTION 33.
- #15
WELL #15 (HARN 51970)
4314' SOUTH & 920' WEST FROM THE
NE CORNER SECTION 33.
- #16
WELL #16 (HARN 52121)
1200' NORTH & 900' WEST FROM THE
SE CORNER SECTION 29.
- #17
WELL #17 (HARN 52154)
6310' SOUTH & 440' EAST FROM THE
NW CORNER SECTION 34.
- #18
WELL #18 (HARN 52170)
1200' NORTH & 850' WEST FROM THE
SE CORNER SECTION 29.

SCALE 4" = 1 MILE

— BURIED 6 OR 8 INCH STEEL PIPE

① OWNER'S PIVOT NUMBER

THIS MAP IS FOR THE PURPOSE OF LOCATING A WATER
RIGHT ONLY AND HAS NO INTENT TO PROVIDE LEGAL
DIMENSIONS OR THE LOCATION OF PROPERTY LINES.

393.6 ACRES PRIMARY
IRRIGATION FROM CERTIFICATE
89122, AS SHOWN

273.8 ACRES PRIMARY
IRRIGATION FROM CERTIFICATE
90456, AS SHOWN

PROJECT No. 15-001

PREPARED AT THE REQUEST OF:
RATTLESNAKE LAND & CATTLE
524 HIGHWAY 20 N
HINES, OR 97738

**ALL POINTS ENGINEERING
& SURVEYING, INC.**

P.O. BOX 767
TERREBONNE, OREGON 97760
(541) 548-5833
Scott@APEandS.com
www.APEandS.com

Certified Water Right Examiner
#51324 WRE

Scott D. Montgomery
May 21, 2001

RECEIVED BY STATE OF OREGON

SEP 28 2015 RENEWAL DATE: 12/31/2016

T 12169

SALEM, OR