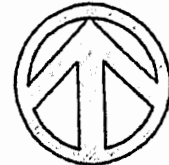


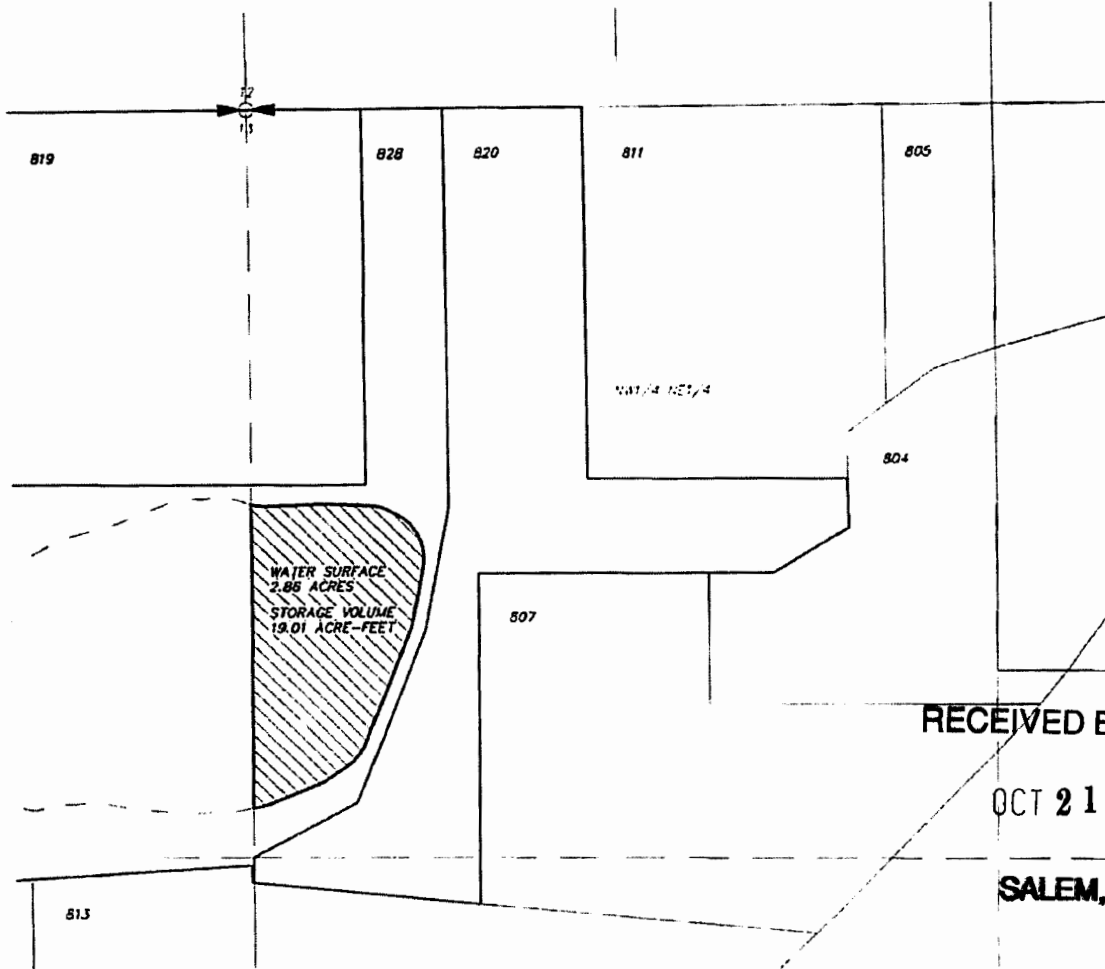
DESCHUTES COUNTY
SECTION 13 T17S R11E W.M.

NW 1/4 OF THE NE 1/4

SCALE: 1"=300'



NORTH



RECEIVED BY OWRD

OCT 21 2015

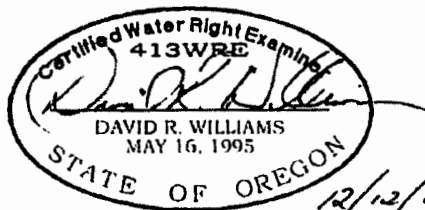
SALEM, OR

STORAGE MAP

RECEIVED

OCT 20 2015

OWRD



12/12/14

TAX LOT NO. 828: 13.67 ACRE-FEET



STORAGE RIGHT

1 12137

HWA SURVEYORS ENGINEERS & PLANNERS
HICKMAN, WILLIAMS & ASSOCIATES, INC.

1201 NW WALL STREET, SUITE 100
BEND, OREGON 97701
PHONE: 541 389-9381 FAX: 541 388-5414

APPLICATION FOR STORAGE RIGHT TRANSFER
KC DEVELOPMENT GROUP, LLC

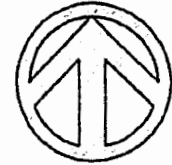
DATE: 12/11/2014

041125-WATER RIGHTS.DWG

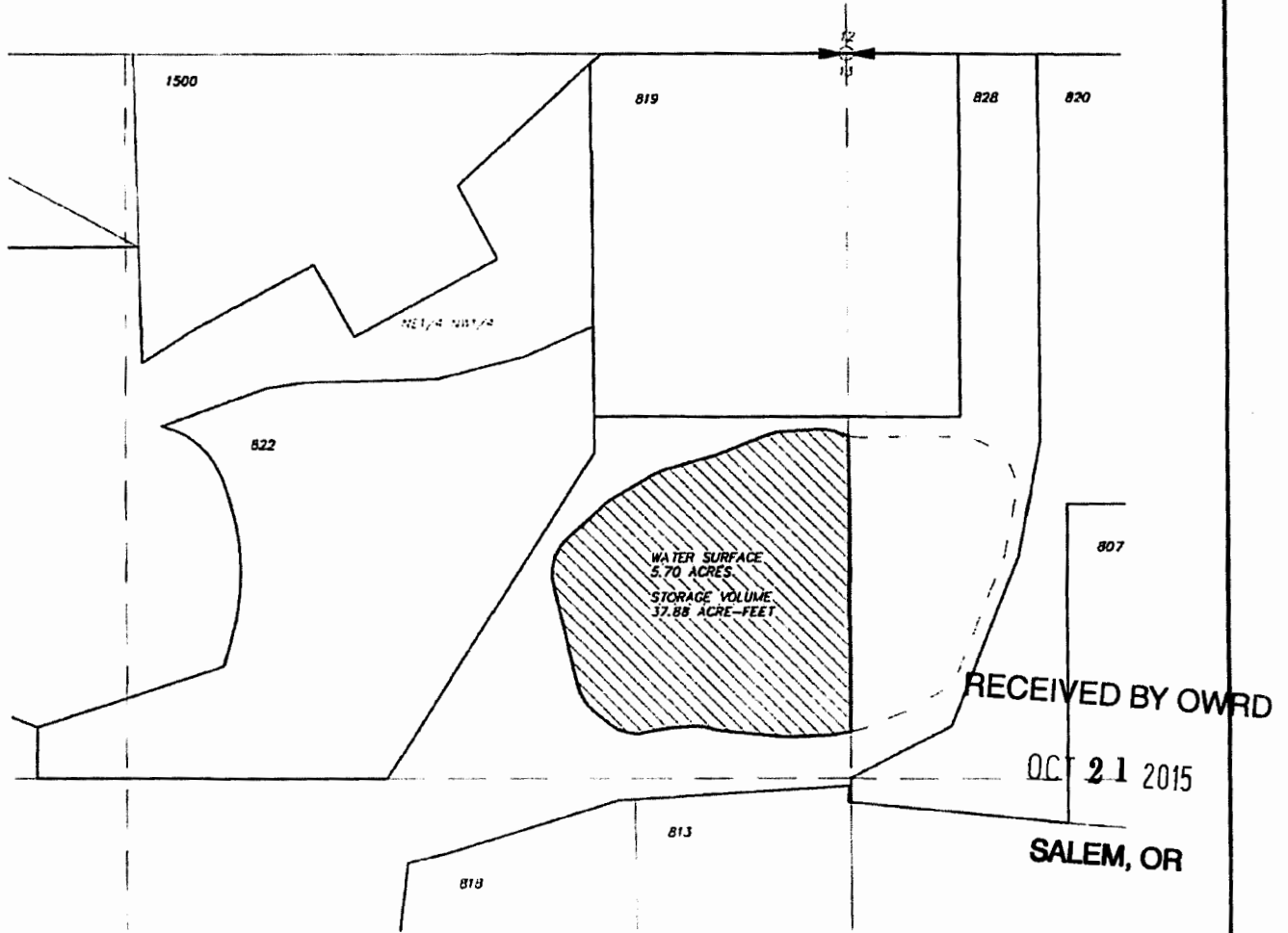
DESCHUTES COUNTY
SECTION 13 T17S R11E W.M.

NE 1/4 OF THE NW 1/4

SCALE: 1"=300'

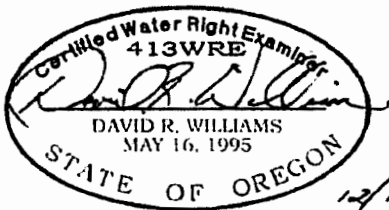


NORTH

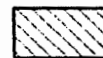


STORAGE MAP

TAX LOT NO. 828: 27.23 ACRE-FEET



RECEIVED
OCT 20 2015
OWRD



STORAGE RIGHT

HWA SURVEYORS, ENGINEERS
& PLANNERS
HICKMAN, WILLIAMS & ASSOCIATES, INC.

1201 NW WALL STREET, SUITE 100
BEND, OREGON 97701
PHONE 541.389.9351 FAX: 541.388.5416

APPLICATION FOR STORAGE RIGHT TRANSFER
KC DEVELOPMENT GROUP, LLC

DATE: 12/11/2014

041125-WATER RIGHTS.DWG

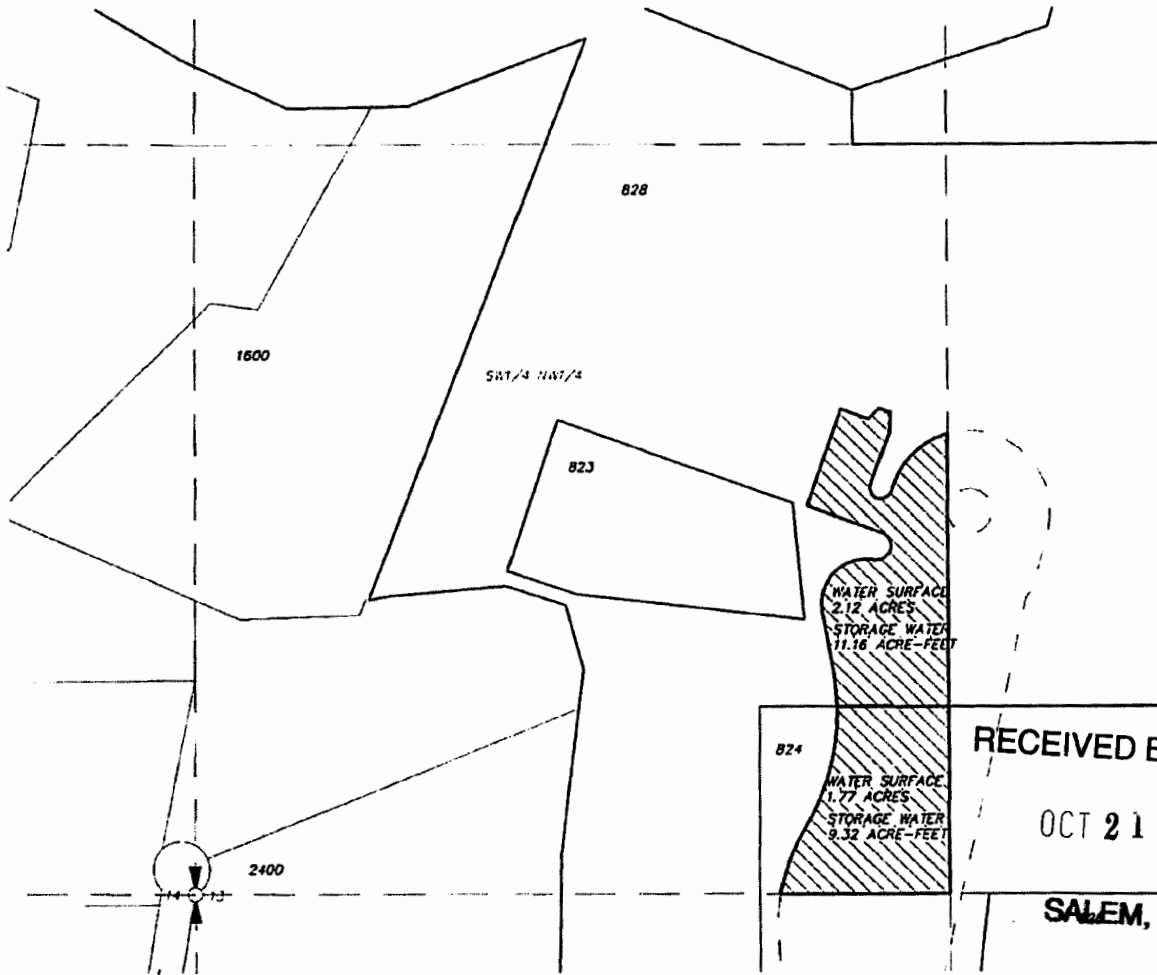
DESCHUTES COUNTY
SECTION 13 T17S R11E W.M.

SW 1/4 OF THE NW 1/4

SCALE: 1"=300'



NORTH



STORAGE MAP

RECEIVED BY OWRD

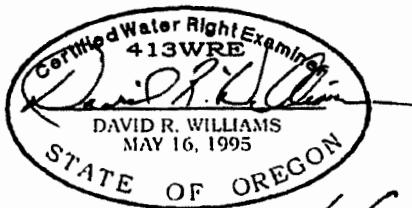
OCT 21 2015

SALEM, OR

RECEIVED

OCT 20 2015

OWRD



12/17/14

TAX LOT NO. 828: 11.03 ACRE-FEET

TAX LOT NO. 824: 9.21 ACRE-FEET



STORAGE RIGHT

1 13107

HWA SURVEYORS, ENGINEERS
& PLANNERS
HICKMAN, WILLIAMS & ASSOCIATES, INC

1201 NW WALL STREET, SUITE 100
BEND, OREGON 97701
PHONE 541.389.9351 FAX 541.388.5416

APPLICATION FOR STORAGE RIGHT TRANSFER
KC DEVELOPMENT GROUP, LLC

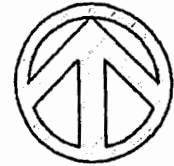
DATE: 12/11/2014

041125-WATER RIGHTS.DWG

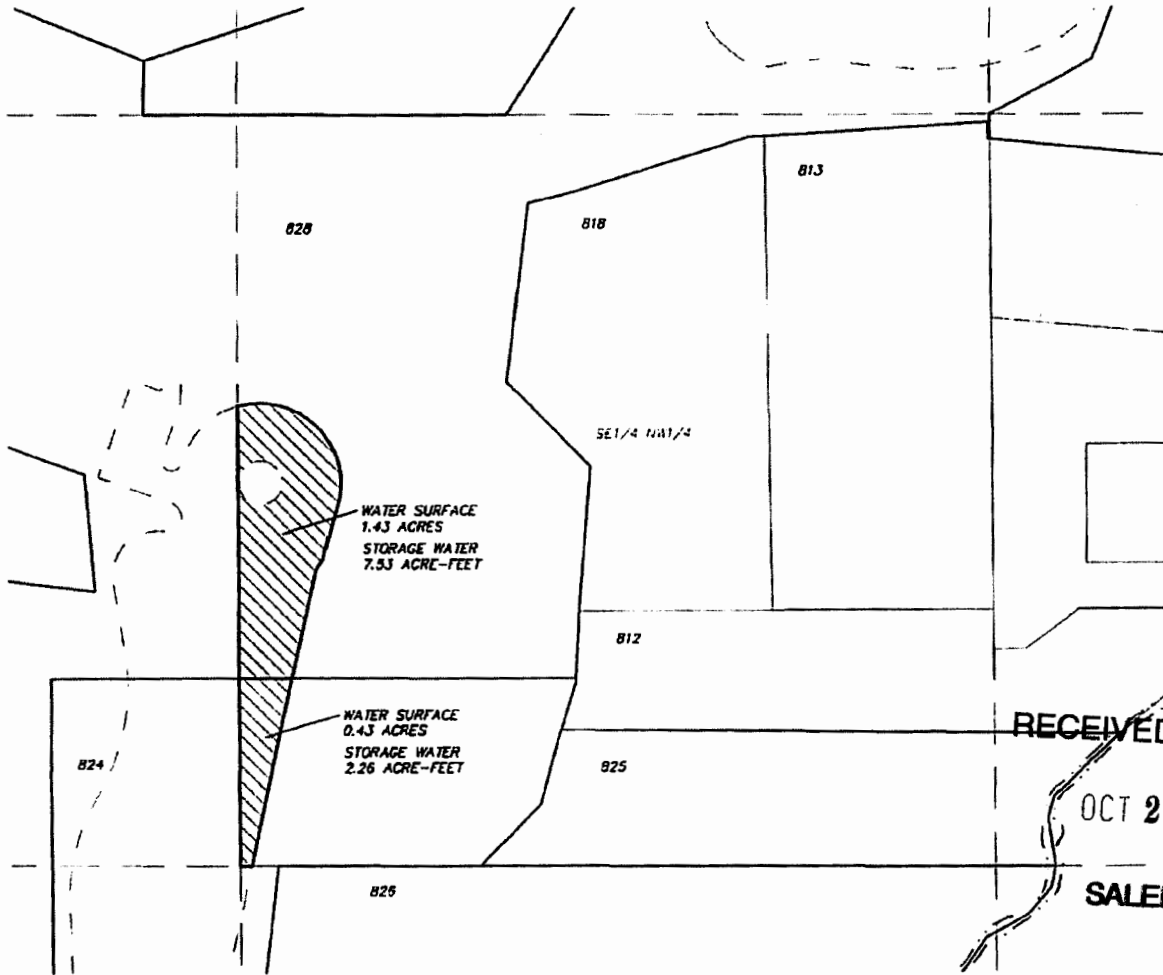
DESCHUTES COUNTY
SECTION 13 T17S R11E W.M.

SE 1/4 OF THE NW 1/4

SCALE: 1"=300'



NORTH



RECEIVED BY OWRD

OCT 21 2015

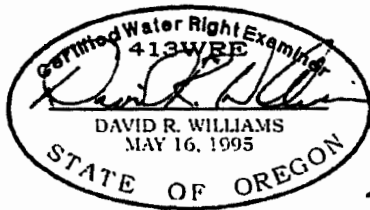
SALEM, OR

STORAGE MAP

RECEIVED

OCT 20 2015

OWRD



TAX LOT NO. 828: 7.44 ACRE-FEET

TAX LOT NO. 824: 2.23 ACRE-FEET

12/2/14

T 12107



STORAGE RIGHT

HWA SURVEYORS, ENGINEERS
& PLANNERS
HICKMAN, WILLIAMS & ASSOCIATES, INC

1201 NW WALL STREET, SUITE 100
SEASD, OREGON 97131
PHONE: 541.389.9251 FAX: 541.389.5414

APPLICATION FOR STORAGE RIGHT TRANSFER
KC DEVELOPMENT GROUP, LLC

DATE: 12/11/2014

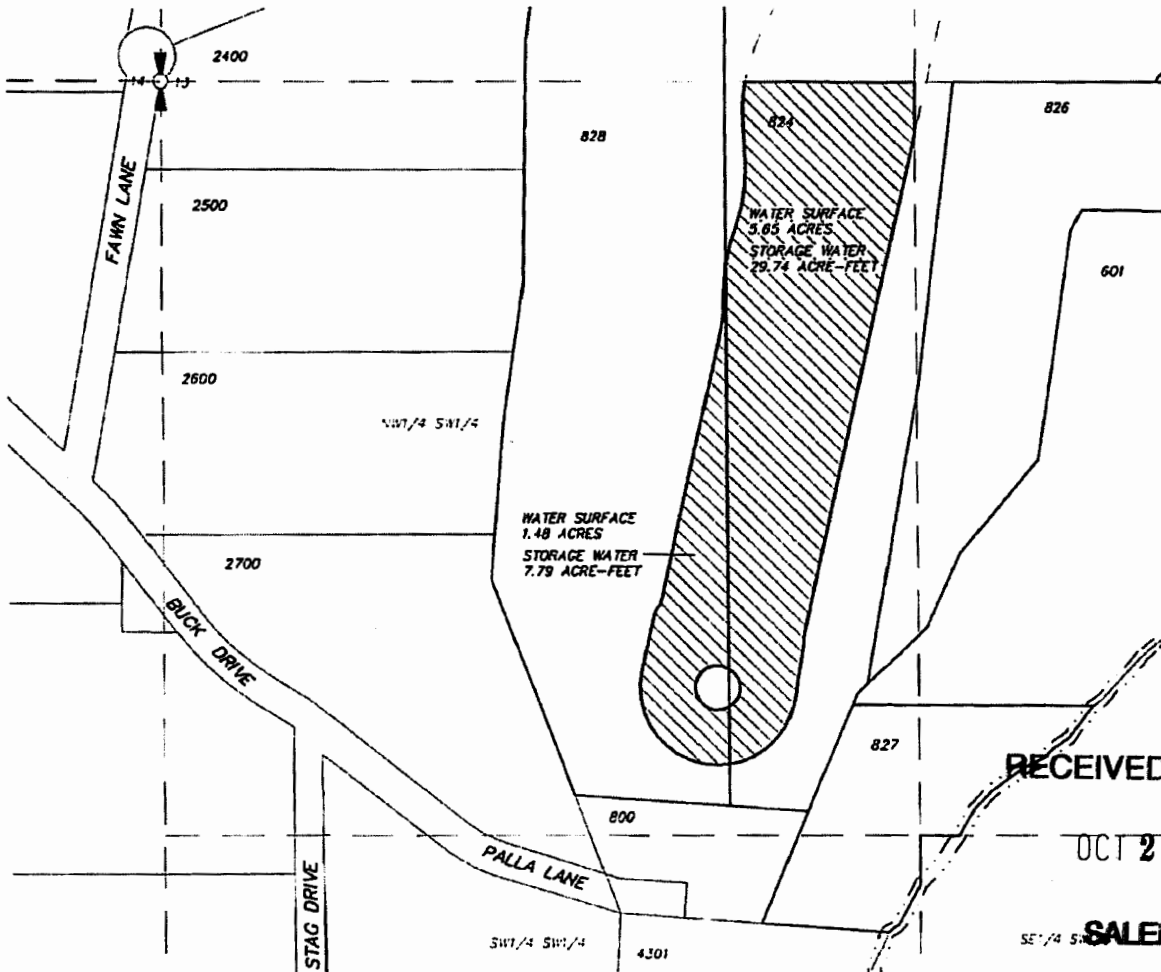
041125-WATER RIGHTS.DWG

DESCHUTES COUNTY
SECTION 13 T17S R11E W.M.
NW 1/4 OF THE SW 1/4

SCALE: 1"=300'



NORTH



RECEIVED BY OWRD

OCT 21 2015

SE 1/4 SW 1/4 SALEM, OR

RECEIVED

OCT 20 2015

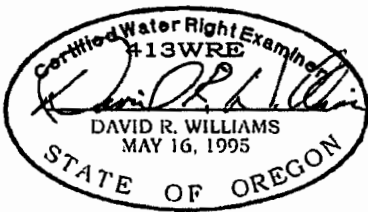
OWRD

STORAGE MAP

TAX LOT NO. 828: 7.70 ACRE-FEET
TAX LOT NO. 824: 29.39 ACRE-FEET



STORAGE RIGHT



12/12/14

1 12107

HWA SURVEYORS ENGINEERS & PLANNERS
HICKMAN, WILLIAMS & ASSOCIATES, INC.
1201 NW WALL STREET, SUITE 100
BEND, OREGON 97701
PHONE: 541.389.9351 FAX: 541.388.5416

APPLICATION FOR STORAGE RIGHT TRANSFER
KC DEVELOPMENT GROUP, LLC

DATE: 12/11/2014

041125-WATER RIGHTS.DWG

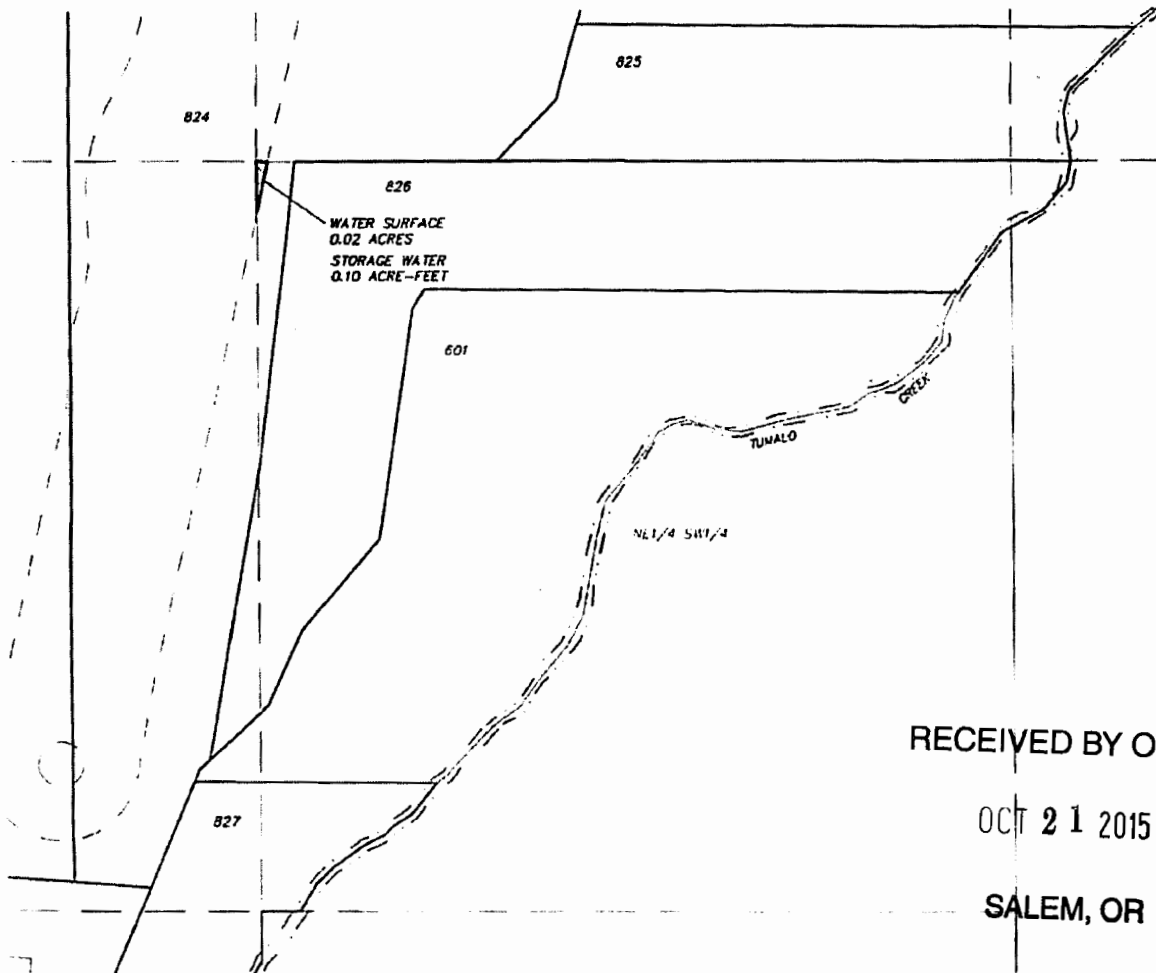
DESCHUTES COUNTY
SECTION 13 T17S R11E W.M.

NE 1/4 OF THE SW 1/4

SCALE: 1"=300'



NORTH



RECEIVED BY OWRD

OCT 21 2015

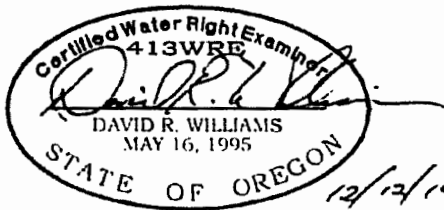
SALEM, OR

STORAGE MAP

RECEIVED

OCT 20 2015

OWRD



TAX LOT NO. 824: 0.10 ACRE-Feet

1 12187



STORAGE RIGHT

HWA SURVEYORS ENGINEERS
& PLANNERS
HICKMAN, WILLIAMS & ASSOCIATES, INC.

1201 NW WALL STREET, SUITE 100
BEND, OREGON 97701
PHONE 541.389.9351 FAX: 541.388.5416

APPLICATION FOR STORAGE RIGHT TRANSFER
KC DEVELOPMENT GROUP, LLC

DATE: 12/11/2014

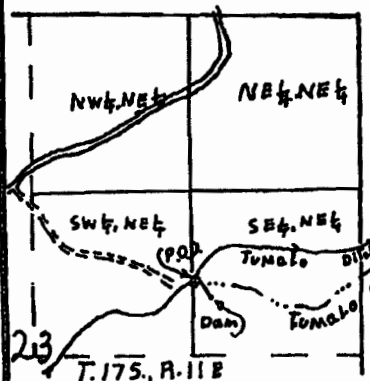
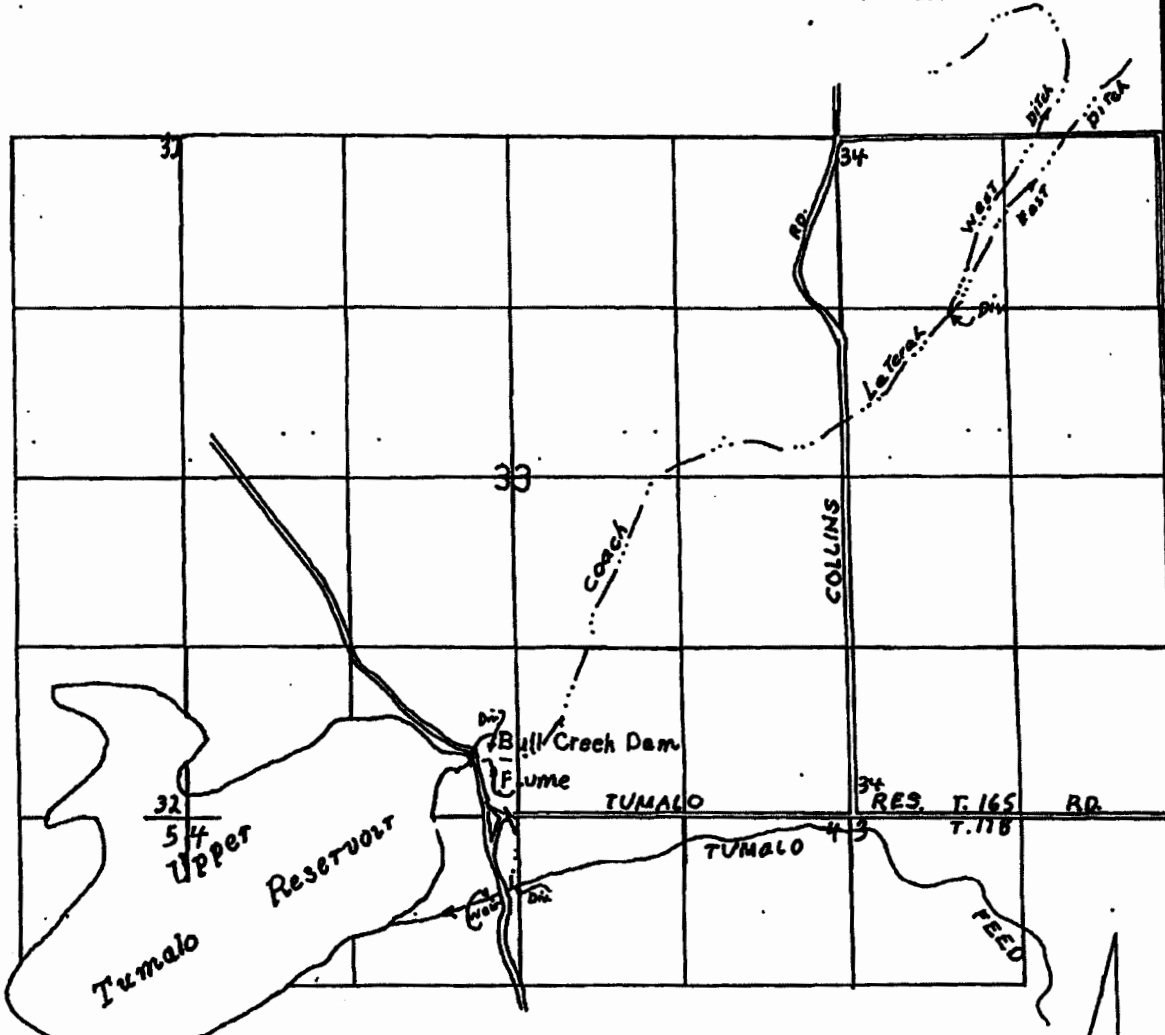
041125-WATER RIGHTS.DWG

T.16,17S.,R.11E.,W.M.
off

RECEIVED

OCT 05 1950

WATER RESOURCES DEPT
SALEM, OREGON



**FINAL PROOF SURVEY
UNDER**

Application No. R-37238 Permit No. R-2743
IN NAME OF

TUMALO IRRIGATION DISTRICT

Surveyed AUG.26. 1998., by R.M.SUTTERFIELD

DIV. PT. 2080'S & 131.0' W FROM
NE COR. OF SEC. 23.

1 12167

RECEIVED BY OWRD

OCT 21 2015

SALEM, OR
RECEIVED

OCT 20 2015

OWRD