

**MAP TO ACCOMPANY APPLICATION
TO CHANGE PLACE OF USE AND POINT OF
APPROPRIATION
FOR
DOUBLE J RANCH, LLC**

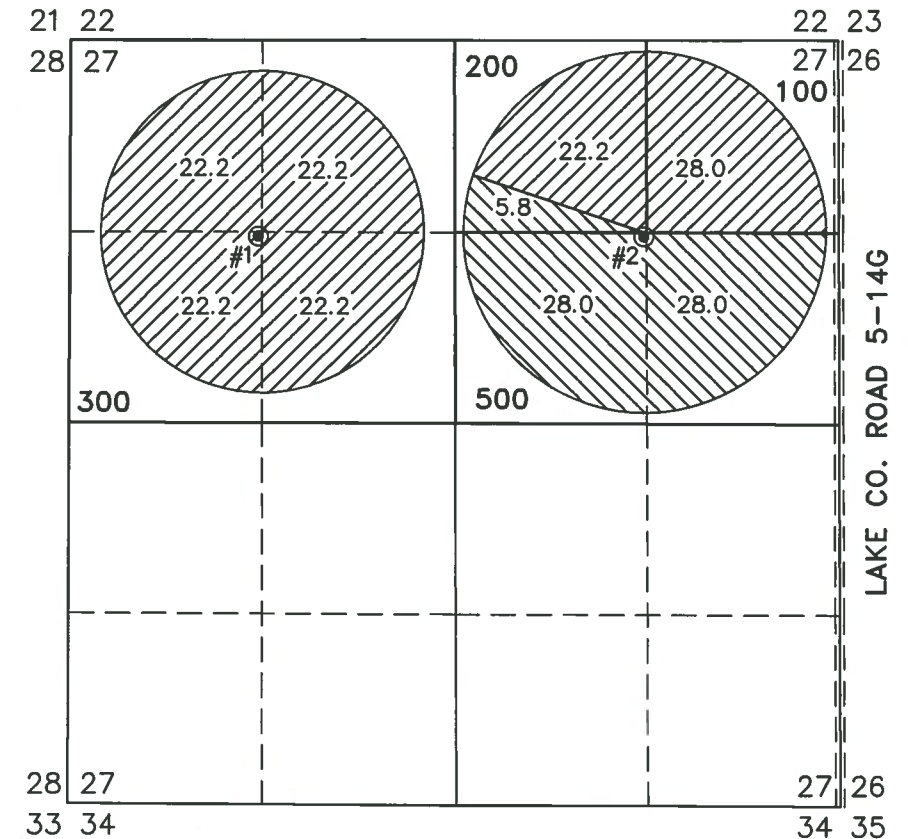
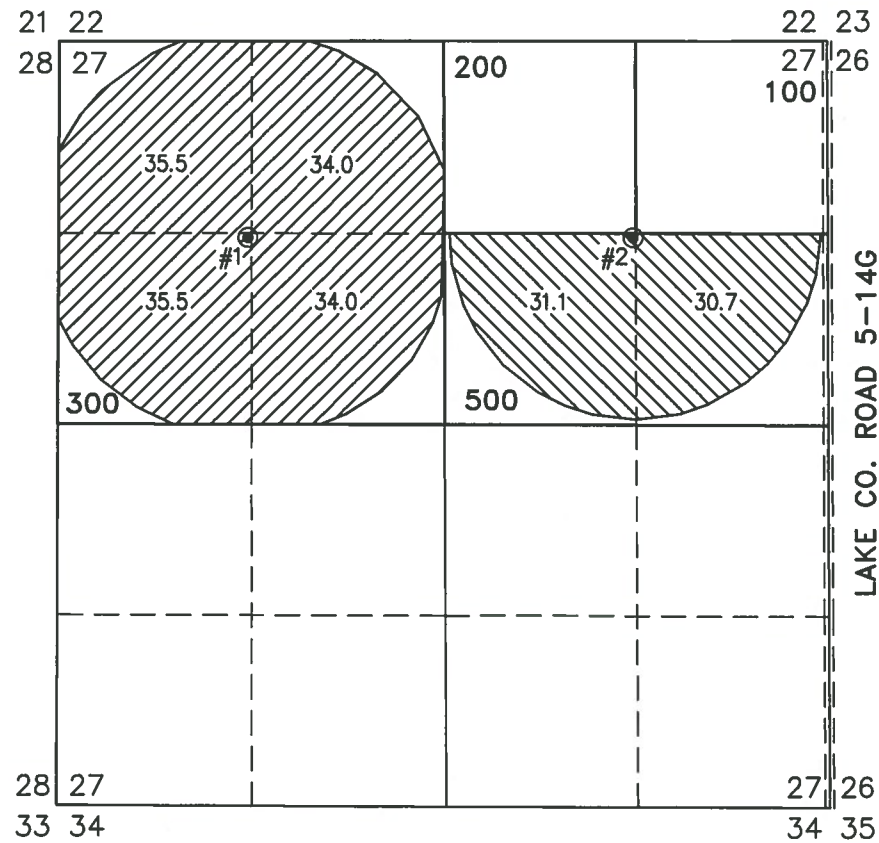
RECEIVED BY OWRD

NOV 30 2015


SALEM, OR


FROM
TAX LOTS 100, 200, 300, & 500
IN SECTION 27, TOWNSHIP 27 SOUTH, RANGE 16 EAST, W.M.
LAKE COUNTY, OREGON

TO
TAX LOTS 100, 200, 300, & 500
IN SECTION 27
TOWNSHIP 27 SOUTH, RANGE 16 EAST, W.M.
LAKE COUNTY, OREGON




LAKE 908 G-8982
 ● #1 WELL LOCATED IN THE SW 1/4 NW 1/4 AND 1350 FEET SOUTH AND 1350 FEET WEST FROM THE NORTH 1/4 CORNER OF SECTION 27.
 LAKE 50565 G-9018
 ● #2 WELL LOCATED IN THE SW 1/4 NE 1/4 AND 1352.7 FEET SOUTH AND 1332.4 FEET WEST FROM THE NE CORNER OF SECTION 27.

 139.0 ACRES WATER RIGHTS FROM C #52875 (G-8982) TRANSFERRED, AS SHOWN.

 61.8 ACRES WATER RIGHTS FROM C #76941 (G-9018) TRANSFERRED, AS SHOWN.

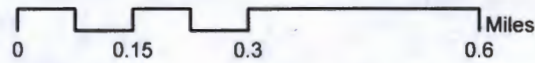
THIS MAP IS FOR THE PURPOSE OF LOCATING A WATER RIGHT ONLY AND HAS NO INTENT TO PROVIDE LEGAL DIMENSIONS OR THE LOCATION OF PROPERTY LINES.

PROJECT No. 15-120	ALL POINTS ENGINEERING & SURVEYING, INC.	 RENEWAL DATE: 12/31/2016
PREPARED AT THE REQUEST OF: DOUBLE J RANCH, LLC P.O. BOX 766 CHRISTMAS VALLEY, OR 97641		

T27S, R16E, W.M.



NRCS 2014 aerial imagery imported from Gateway website and in ESRI ArcMap GIS software



T 12211

RECEIVED BY OWRD
NOV 30 2015
SALEM, OR

2011