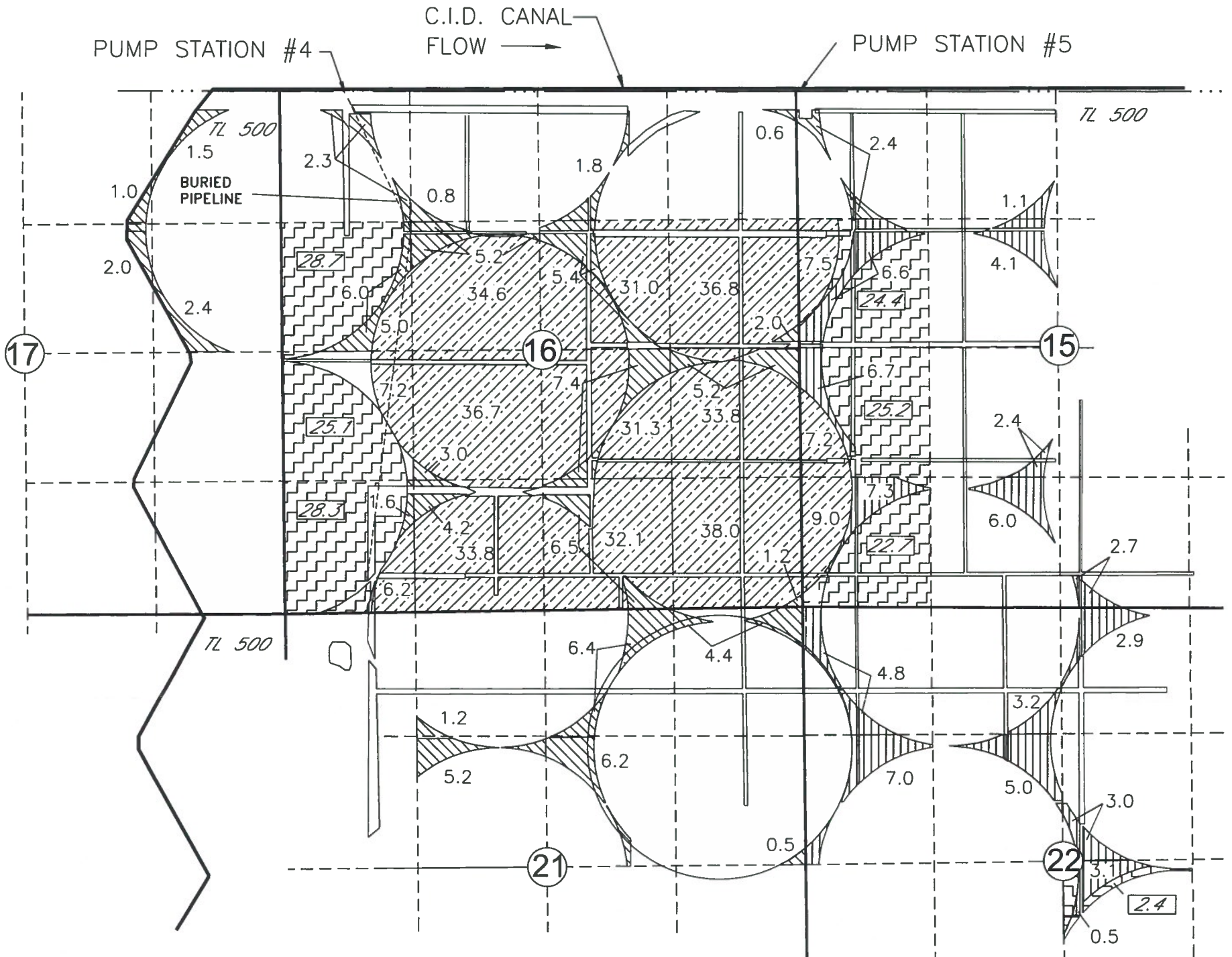


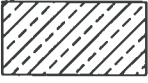




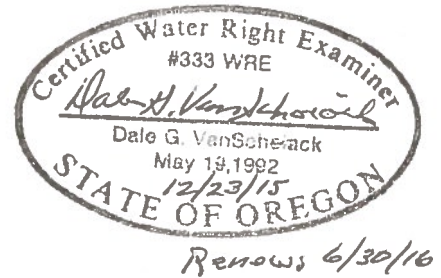
**TRANSFER APPLICATION MAP**  
**WILLOW CREEK DAIRY TO SAGE HOLLOW RANCH, LLC**  
**FOR PORTIONS OF CERTIFICATES 86992, 86993, AND 80062**  
**T3N, R26E, W.M., MORROW COUNTY**

**SHEET 1 OF 2 "FROM MAP"**



**LEGEND**

-  86.4 AC OF CERT 86992
-  66.4 AC OF CERT 86993
-  350.2 AC OF CERT 80062
-  AC OF CERT 80062 in QTR  
QTR NOT ASSOCIATED WITH  
THIS TRANSFER
-  AC OF CERT 86993 in QTR  
QTR NOT ASSOCIATED WITH  
THIS TRANSFER



**RECEIVED BY OWRD**

**JAN 15 2016**

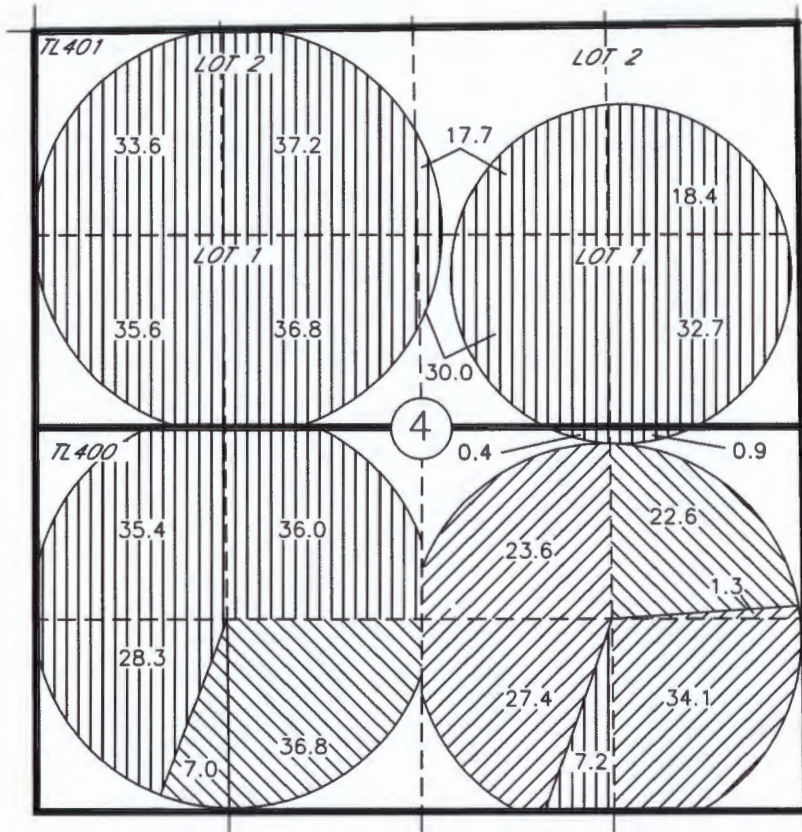
**SALEM, OR**

NOTE:  
 THE PURPOSE OF THIS MAP IS TO IDENTIFY THE APPROXIMATE LOCATION OF THE WATER RIGHT. IT IS NOT INTENDED  
 TO PROVIDE INFORMATION RELATIVE TO THE LOCATION OF PROPERTY OWNERSHIP BOUNDARY LINES. PIPE LOCATIONS  
 AND SIZES WHERE SHOWN WERE PROVIDED BY FARM OPERATIONAL PERSONNEL AND ARE APPROXIMATE LOCATIONS AND  
 SIZES.




T 12247

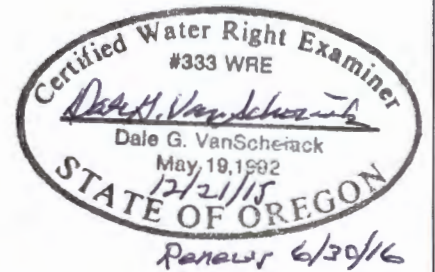
**TRANSFER APPLICATION MAP**  
**WILLOW CREEK DAIRY TO SAGE HOLLOW RANCH, LLC**  
**FOR PORTIONS OF CERTIFICATES 86992, 86993, AND 80062**  
**T3N, R26E, W.M., MORROW COUNTY**

**SHEET 2 OF 2 " TO MAP "**



**LEGEND**

-  350.2 AC CERT 80062
-  86.4 AC CERT 86992
-  66.4 AC CERT 86993



P.O.D. COLUMBIA RIVER  
 LOCATED IN LOT 7, NE1/4 NW1/4,  
 SEC 2, T4N, R25E, W.M.; 150 FT  
 SOUTH AND 2990 FT WEST FROM  
 THE NE COR OF SEC 2.

T 12247

RECEIVED BY OWRD

JAN 15 2016

SALEM, OR

NOTE:  
 THE PURPOSE OF THIS MAP IS TO IDENTIFY THE APPROXIMATE LOCATION OF THE WATER RIGHT. IT IS NOT INTENDED  
 TO PROVIDE INFORMATION RELATIVE TO THE LOCATION OF PROPERTY OWNERSHIP BOUNDARY LINES. PIPE LOCATIONS  
 AND SIZES WHERE SHOWN WERE PROVIDED BY FARM OPERATIONAL PERSONNEL AND ARE APPROXIMATE LOCATIONS AND  
 SIZES.

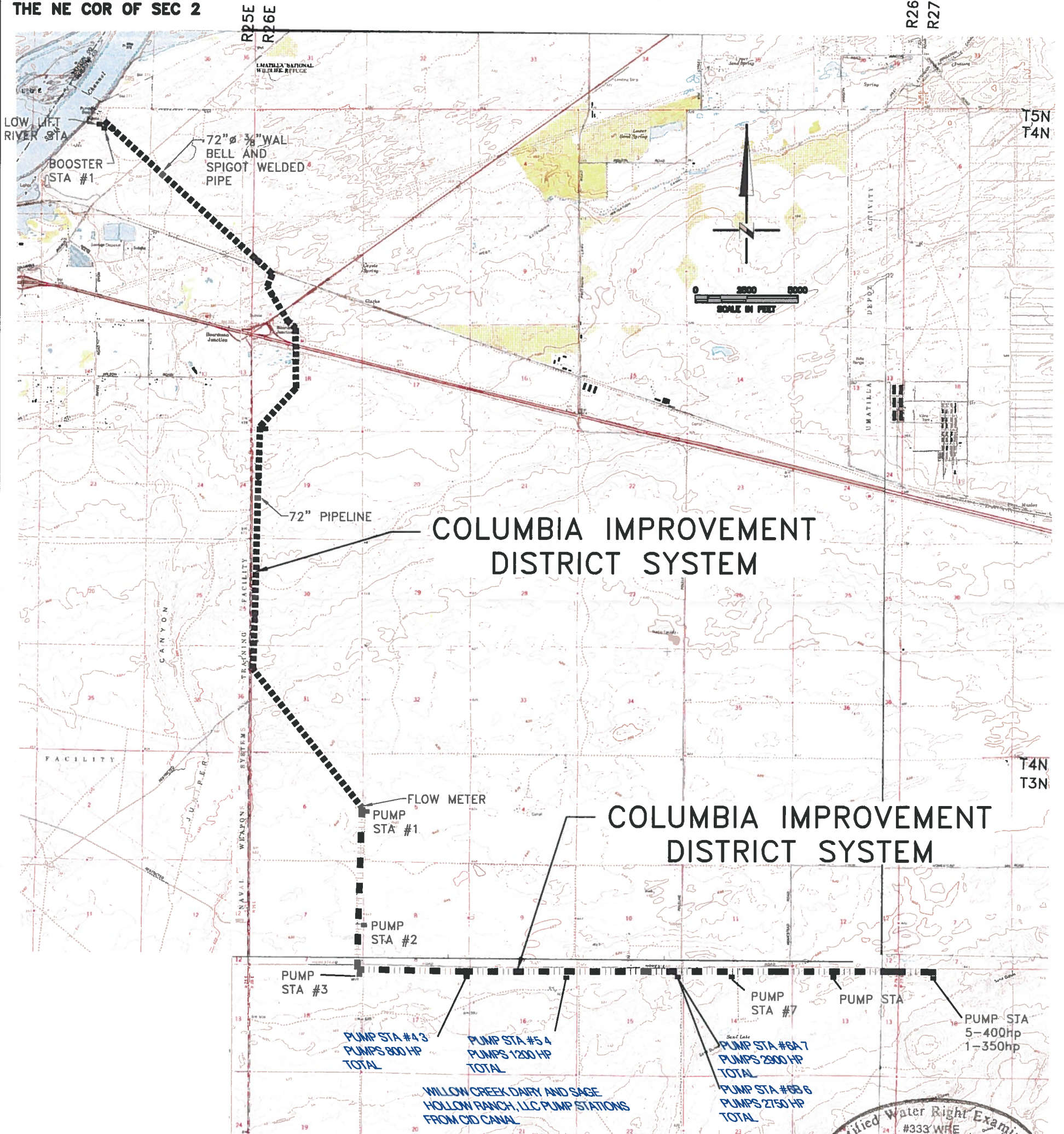
P.O.D. COLUMBIA RIVER  
LOCATED IN LOT 7 NE 1/4 NW  
1/4, SEC 2, T4N, R25 EWM,  
150' SOUTH AND 2990' W FROM  
THE NE COR OF SEC 2

WILLOW CREEK DAIRY AND SAGE HOLLOW  
RANCH, LLC DELIVERY SYSTEM  
FROM THE COLUMBIA RIVER

JAN 15 2016

SALEM, OR

T 2&3 N, R 26, 27 & 28 E. W.M.



COLUMBIA IMPROVEMENT  
DISTRICT SYSTEM

COLUMBIA IMPROVEMENT  
DISTRICT SYSTEM

- PUMP STA #3
- PUMP STA #4 3 PUMPS 800 HP TOTAL
- PUMP STA #5 4 PUMPS 1200 HP TOTAL
- WILLOW CREEK DAIRY AND SAGE HOLLOW RANCH, LLC PUMP STATIONS FROM CID CANAL
- PUMP STA #6 6 PUMPS 2150 HP TOTAL
- PUMP STA #7
- PUMP STA #8 7 PUMPS 2800 HP TOTAL
- PUMP STA #9 5-400hp 1-350hp

T 12247

