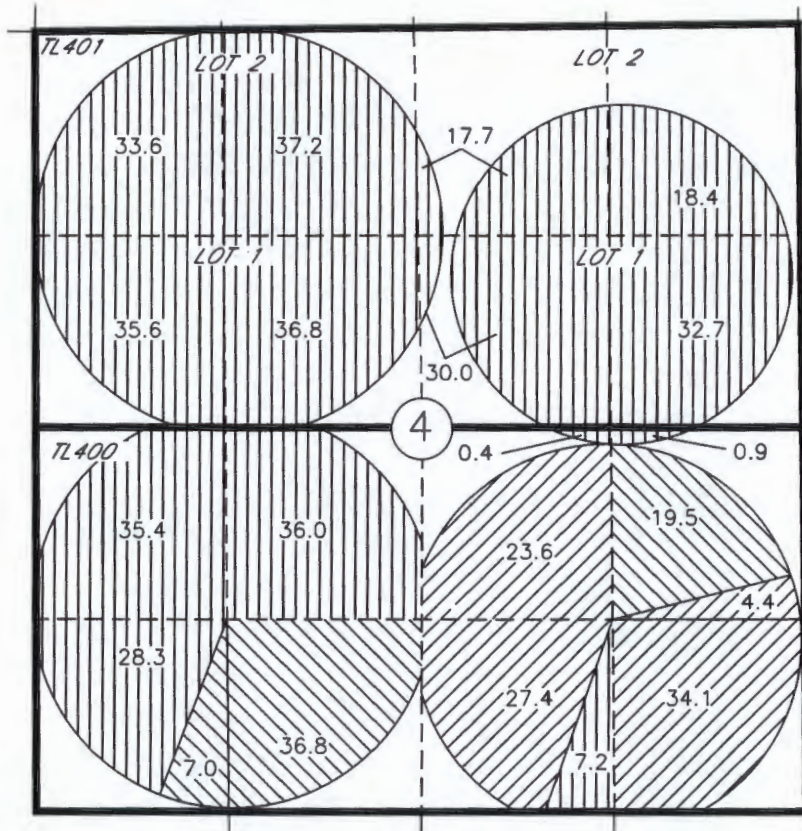





**AMENDED (6/8/16) TRANSFER APPLICATION MAP
WILLOW CREEK DAIRY TO SAGE HOLLOW RANCH, LLC
FOR PORTIONS OF CERTIFICATES 86992, 86993, AND 80062
T3N, R26E, W.M., MORROW COUNTY**

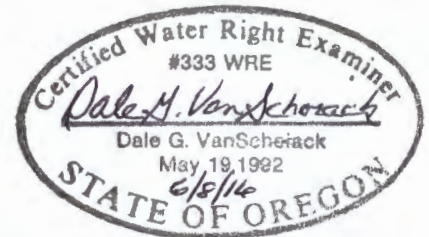
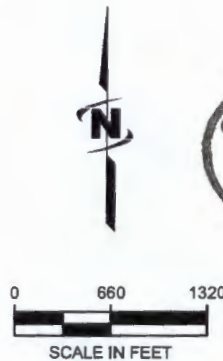
SHEET 2 OF 2 " TO MAP "



LEGEND

-  350.2 AC CERT 80062
-  89.5 AC CERT 86992
-  63.3 AC CERT 86993

P.O.D. COLUMBIA RIVER
LOCATED IN LOT 7, NE1/4 NW1/4,
SEC 2, T4N, R25E, W.M.; 150 FT
SOUTH AND 2990 FT WEST FROM
THE NE COR OF SEC 2.



Renewal 6/30/16

RECEIVED BY OWRD

JUN 20 2016

SALEM, OR

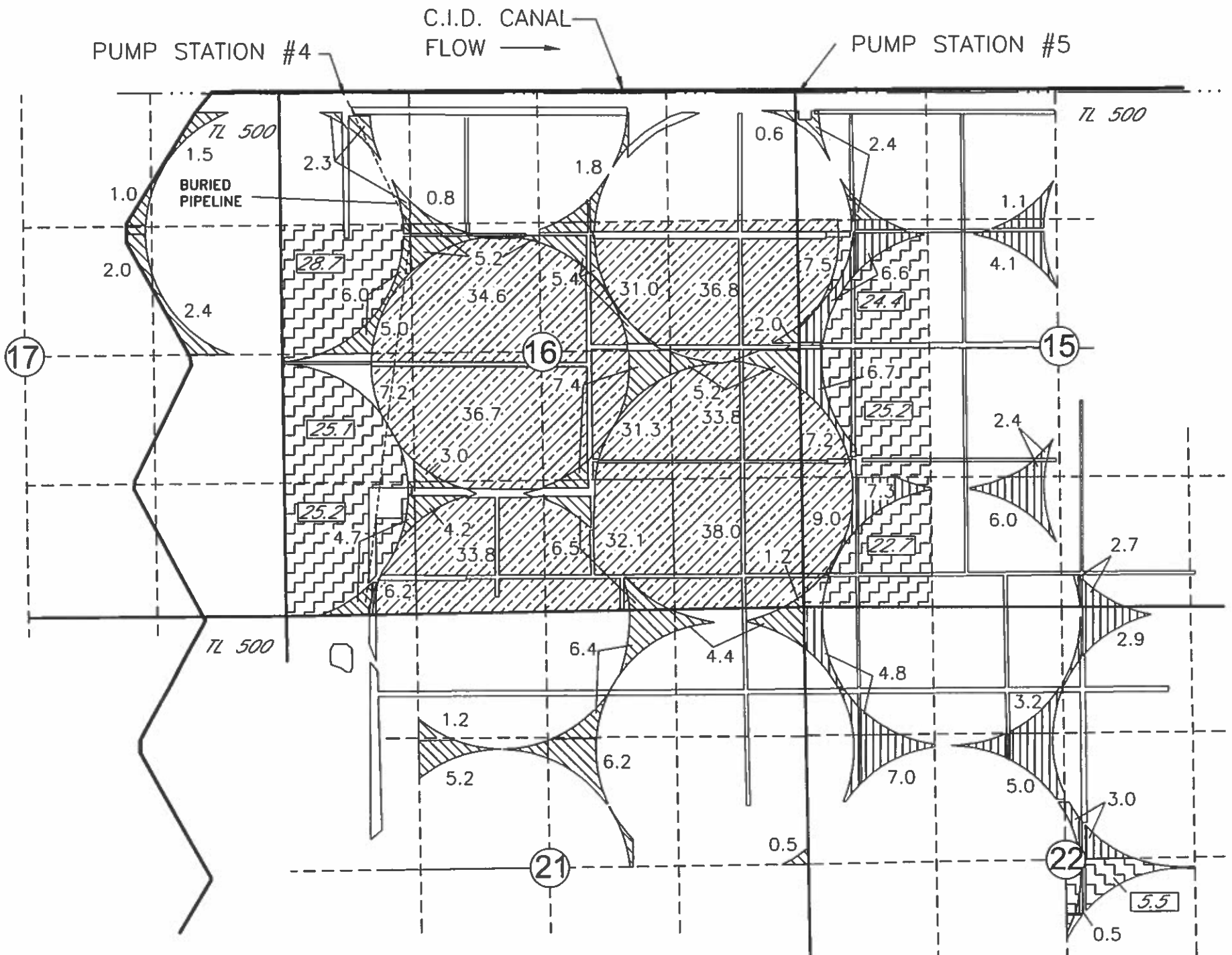
NOTE:
THE PURPOSE OF THIS MAP IS TO IDENTIFY THE APPROXIMATE LOCATION OF THE WATER RIGHT. IT IS NOT INTENDED TO PROVIDE INFORMATION RELATIVE TO THE LOCATION OF PROPERTY OWNERSHIP BOUNDARY LINES, PIPE LOCATIONS AND SIZES WHERE SHOWN WERE PROVIDED BY FARM OPERATIONAL PERSONNEL AND ARE APPROXIMATE LOCATIONS AND SIZES.

T-12248

AMENDED (6/8/16) TRANSFER APPLICATION MAP WILLOW CREEK DAIRY TO SAGE HOLLOW RANCH, LLC FOR PORTIONS OF CERTIFICATES 86992, 86993, AND 80062 T3N, R26E, W.M., MORROW COUNTY

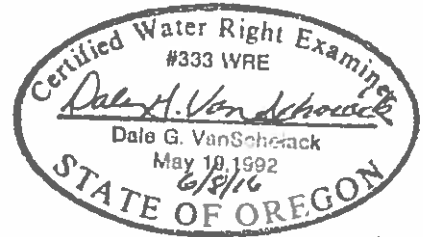
T-12248

SHEET 1 OF 2 "FROM MAP"



LEGEND

- 89.5 AC OF CERT 86992
- 63.3 AC OF CERT 86993
- 350.2 AC OF CERT 80062
- AC OF CERT 80062 in QTR NOT ASSOCIATED WITH THIS TRANSFER
- AC OF CERT 86993 in QTR NOT ASSOCIATED WITH THIS TRANSFER



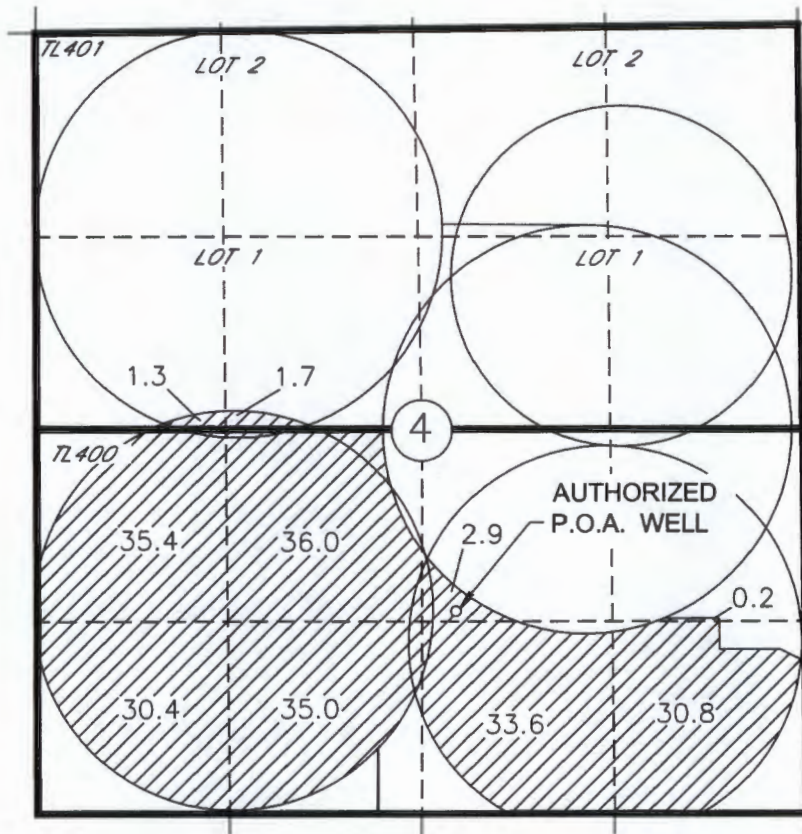
Renew 6/30/16

NOTE: THE PURPOSE OF THIS MAP IS TO IDENTIFY THE APPROXIMATE LOCATION OF THE WATER RIGHT. IT IS NOT INTENDED TO PROVIDE INFORMATION RELATIVE TO THE LOCATION OF PROPERTY OWNERSHIP BOUNDARY LINES. PIPE LOCATIONS AND SIZES WHERE SHOWN WERE PROVIDED BY FARM OPERATIONAL PERSONNEL AND ARE APPROXIMATE LOCATIONS AND SIZES.



TRANSFER APPLICATION MAP
 SAGE HOLLOW RANCH, LLC TO WILLOW CREEK DAIRY
 CERTIFICATES 49726, 49727, 55316, 55317
 T3N, R26E, W.M., MORROW COUNTY

SHEET 1 OF 8
 CERTIFICATE 49726 "FROM MAP"

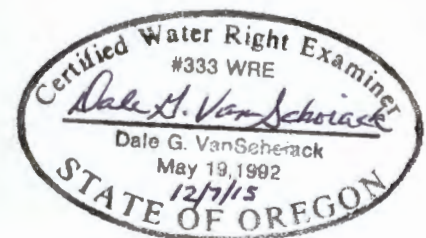


LEGEND



207.3 AC

- o AUTHORIZED P.O.A. WELL
 LOCATED 1390' N AND 2390' W
 FROM THE SE COR SEC 4



Renews 6/30/16

RECEIVED BY OWRD

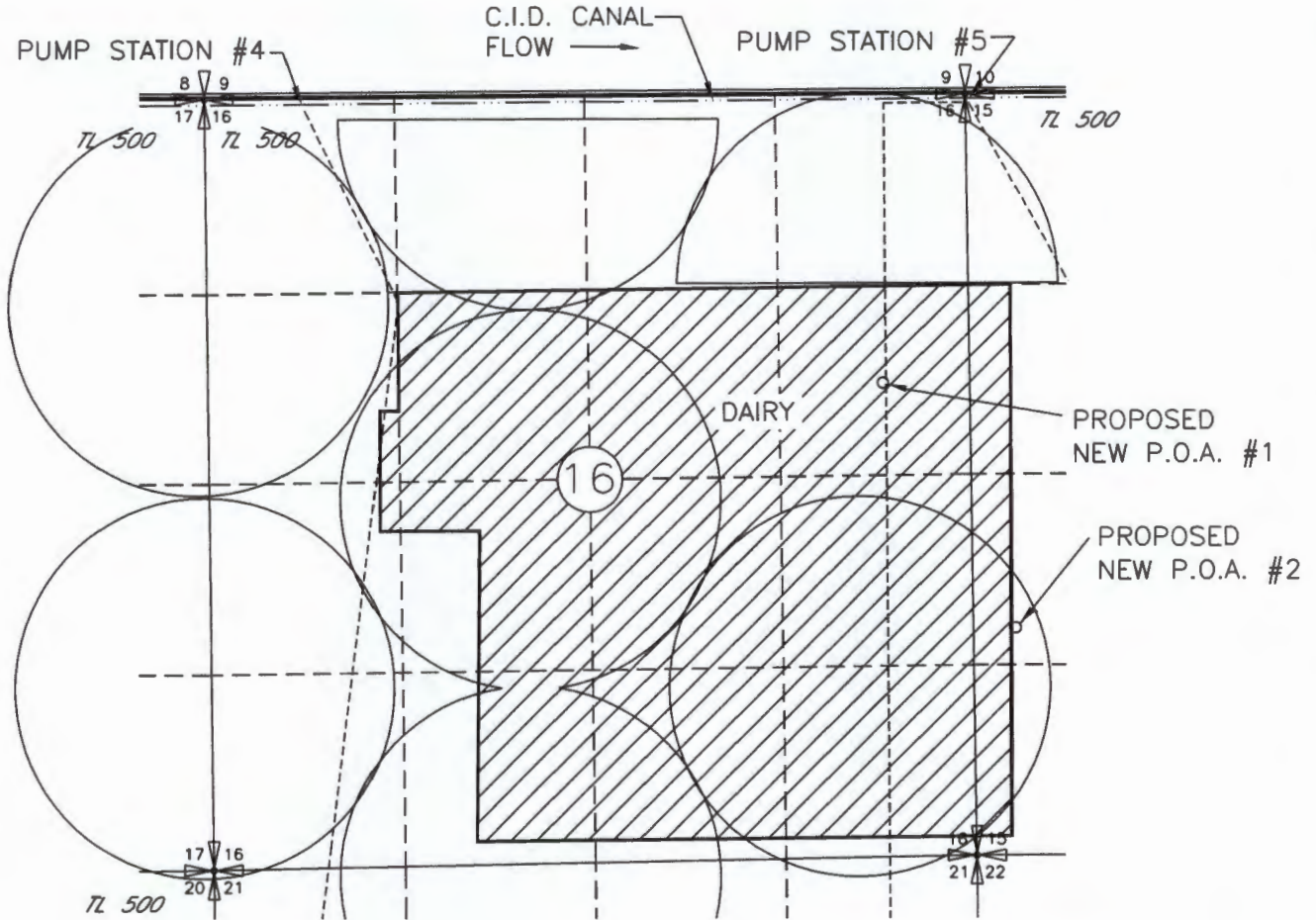
JAN 15 2016

SALEM, OR

NOTE:
 THE PURPOSE OF THIS MAP IS TO IDENTIFY THE APPROXIMATE LOCATION OF THE WATER RIGHT. IT IS NOT INTENDED TO PROVIDE INFORMATION RELATIVE TO THE LOCATION OF PROPERTY OWNERSHIP BOUNDARY LINES. PIPE LOCATIONS AND SIZES WHERE SHOWN WERE PROVIDED BY FARM OPERATIONAL PERSONNEL AND ARE APPROXIMATE LOCATIONS AND SIZES.

TRANSFER APPLICATION MAP
SAGE HOLLOW RANCH, LLC TO WILLOW CREEK DAIRY
CERTIFICATES 49726, 49727, 55316, 55317
T3N, R26E, W.M., MORROW COUNTY

SHEET 2 OF 8
CERTIFICATE 49726 "TO MAP"

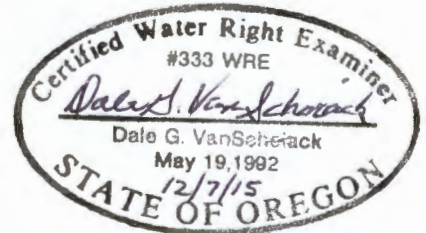


LEGEND



AGRICULTURAL USE FOR THE CONSTRUCTION AND OPERATION OF A DAIRY

- PROPOSED P.O.A. #1
WELL LOCATED 1970' S AND 600' W FROM THE NE COR SEC 16
- PROPOSED P.O.A. #2
WELL LOCATED 1580' N AND 290' E FROM THE SE COR SEC 16



Renew 6/30/16

RECEIVED BY OWRD

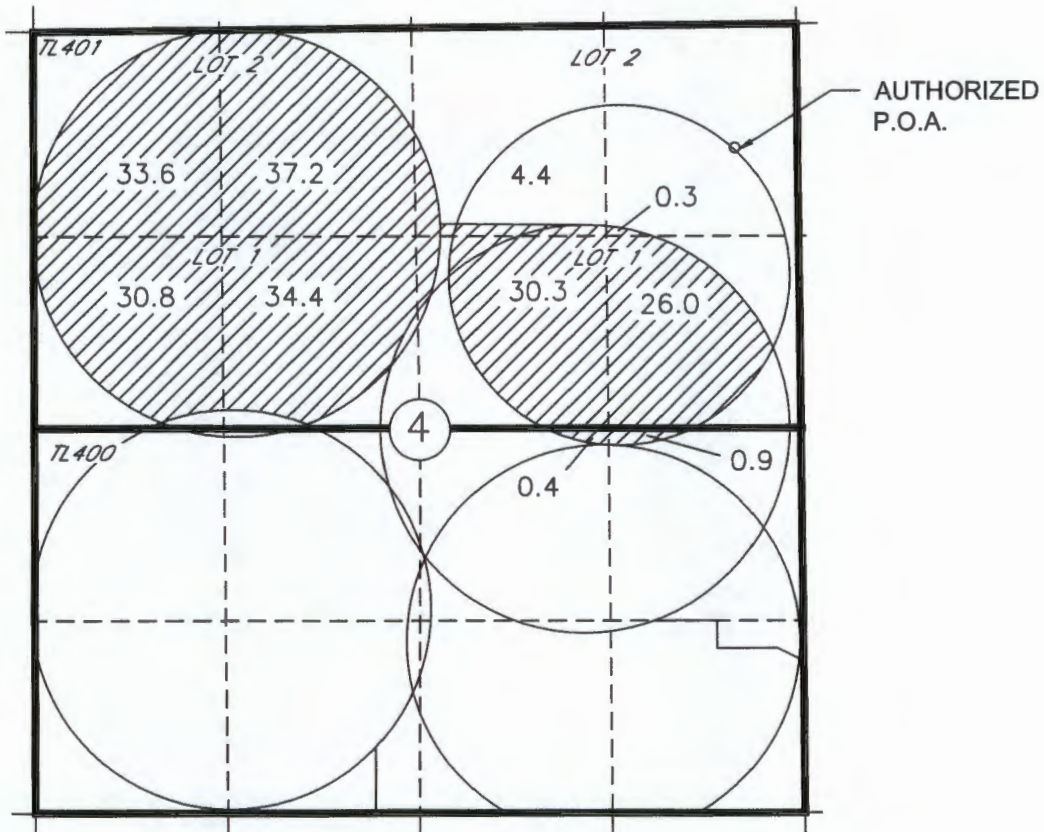
JAN 15 2016

SALEM, OR

NOTE:
 THE PURPOSE OF THIS MAP IS TO IDENTIFY THE APPROXIMATE LOCATION OF THE WATER RIGHT. IT IS NOT INTENDED TO PROVIDE INFORMATION RELATIVE TO THE LOCATION OF PROPERTY OWNERSHIP BOUNDARY LINES. PIPE LOCATIONS AND SIZES WHERE SHOWN WERE PROVIDED BY FARM OPERATIONAL PERSONNEL AND ARE APPROXIMATE LOCATIONS AND SIZES.

TRANSFER APPLICATION MAP
 SAGE HOLLOW RANCH, LLC TO WILLOW CREEK DAIRY
 CERTIFICATES 49726, 49727, 55316, 55317
 T3N, R26E, W.M., MORROW COUNTY

SHEET 3 OF 8
 CERTIFICATE 49727 "FROM MAP"

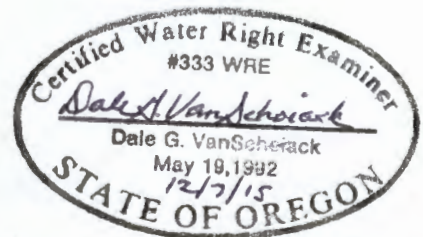
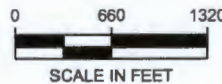


LEGEND



198.3 AC

- AUTHORIZED P.O.A.
 WELL LOCATED 840' S AND 430' W
 FROM THE NE COR SEC 4



Renews 6/30/16

RECEIVED BY OWRD

JAN 15 2016

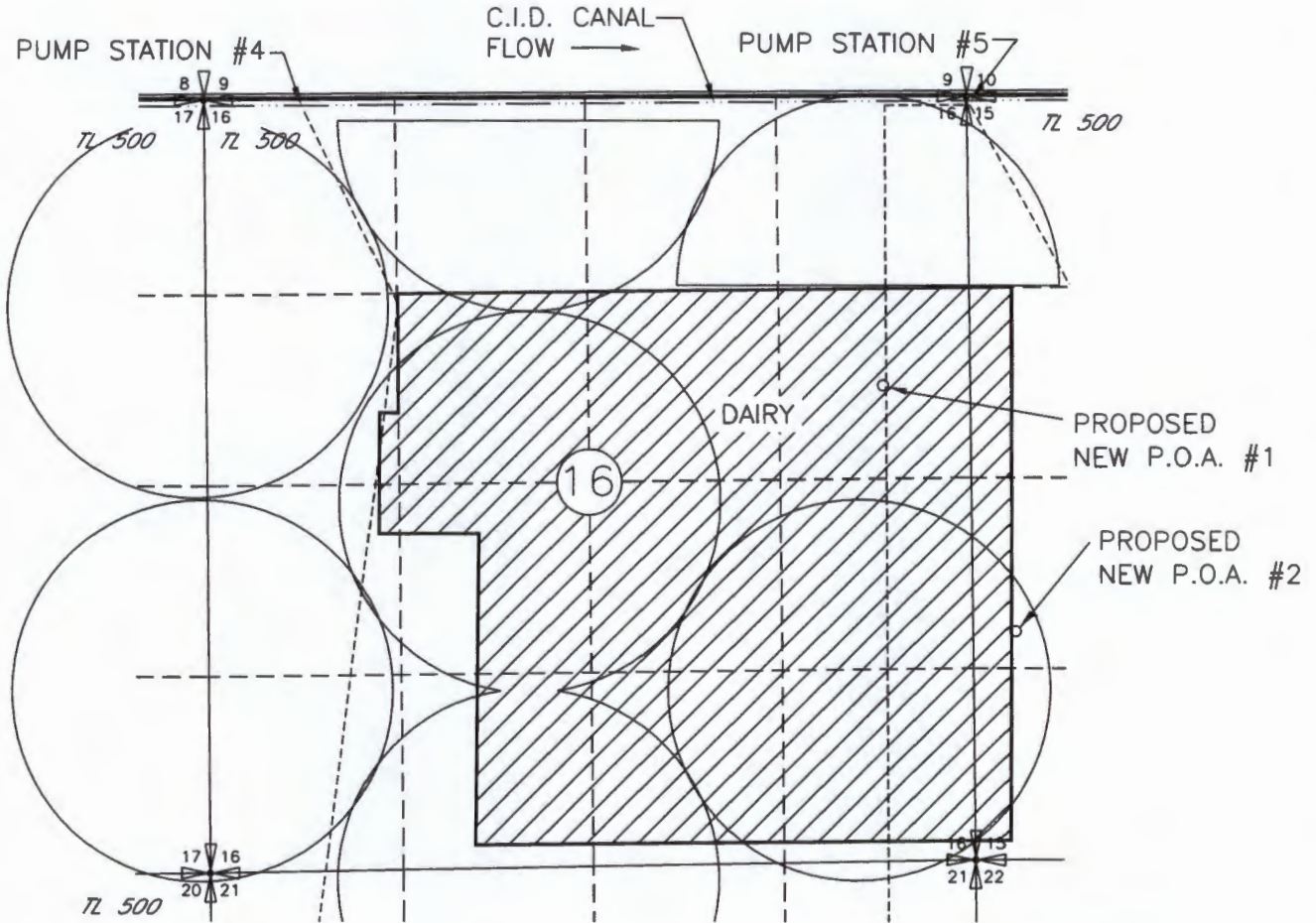
SALEM, OR

NOTE:
 THE PURPOSE OF THIS MAP IS TO IDENTIFY THE APPROXIMATE LOCATION OF THE WATER RIGHT. IT IS NOT INTENDED
 TO PROVIDE INFORMATION RELATIVE TO THE LOCATION OF PROPERTY OWNERSHIP BOUNDARY LINES. PIPE LOCATIONS
 AND SIZES WHERE SHOWN WERE PROVIDED BY FARM OPERATIONAL PERSONNEL AND ARE APPROXIMATE LOCATIONS AND
 SIZES.

T 12248

TRANSFER APPLICATION MAP
SAGE HOLLOW RANCH, LLC TO WILLOW CREEK DAIRY
CERTIFICATES 49726, 49727, 55316, 55317
T3N, R26E, W.M., MORROW COUNTY

SHEET 4 OF 8
CERTIFICATE 49727 "TO MAP"

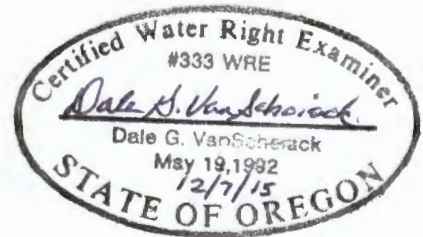


LEGEND



AGRICULTURAL USE FOR THE CONSTRUCTION AND OPERATION OF A DAIRY

- PROPOSED P.O.A. #1
WELL LOCATED 1970' S AND 600' W FROM THE NE COR SEC 16
- PROPOSED P.O.A. #2
WELL LOCATED 1580' N AND 290' E FROM THE SE COR SEC 16



Renews 6/30/16

NOTE:
 THE PURPOSE OF THIS MAP IS TO IDENTIFY THE APPROXIMATE LOCATION OF THE WATER RIGHT. IT IS NOT INTENDED TO PROVIDE INFORMATION RELATIVE TO THE LOCATION OF PROPERTY OWNERSHIP BOUNDARY LINES. PIPE LOCATIONS AND SIZES WHERE SHOWN WERE PROVIDED BY FARM OPERATIONAL PERSONNEL AND ARE APPROXIMATE LOCATIONS AND SIZES.

RECEIVED BY OWRD

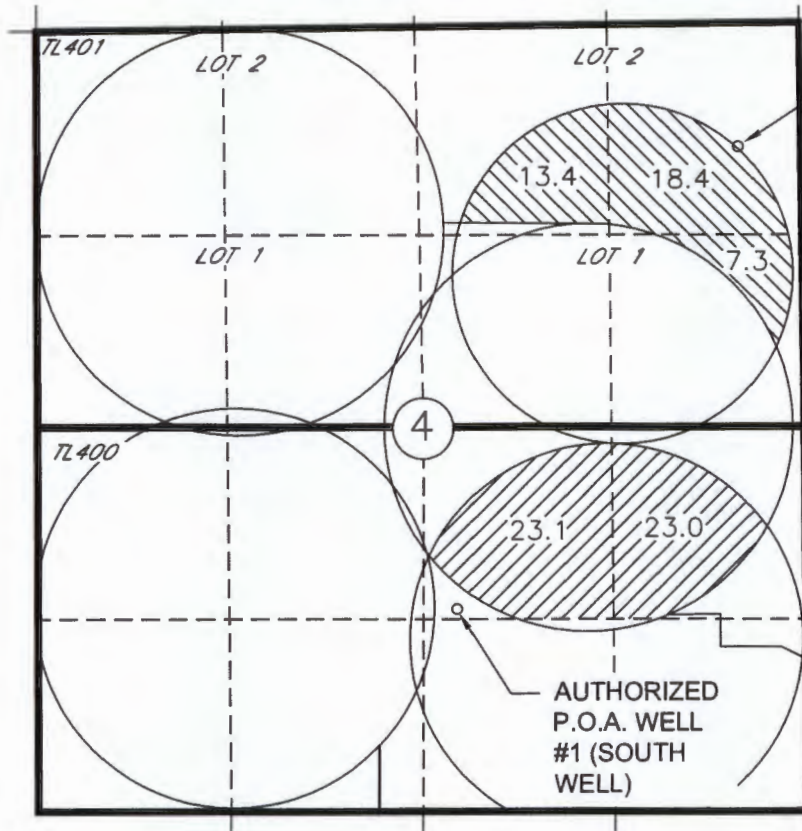
JAN 15 2016

SALEM, OR

T 12248

TRANSFER APPLICATION MAP
SAGE HOLLOW RANCH, LLC TO WILLOW CREEK DAIRY
CERTIFICATES 49726, 49727, 55316, 55317
T3N, R26E, W.M., MORROW COUNTY

SHEET 5 OF 8
CERTIFICATE 55316 "FROM MAP"



AUTHORIZED
P.O.A. WELL
#2 (NORTH
WELL)

AUTHORIZED
P.O.A. WELL
#1 (SOUTH
WELL)

LEGEND

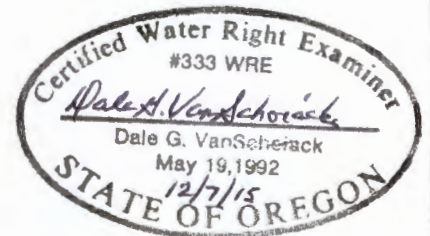
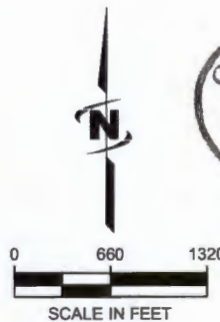


46.1 AC WELL #1 (SOUTH WELL)



39.1 AC WELL #2 (NORTH WELL)

- AUTHORIZED P.O.A. WELL #1
(SOUTH WELL) 1390' N AND 2390' W
FROM THE SE COR OF SEC 4
- AUTHORIZED P.O.A. WELL #2
(NORTH WELL) 840' S AND 430' W
FROM THE NE COR OF SEC 4



Renew 6/30/16

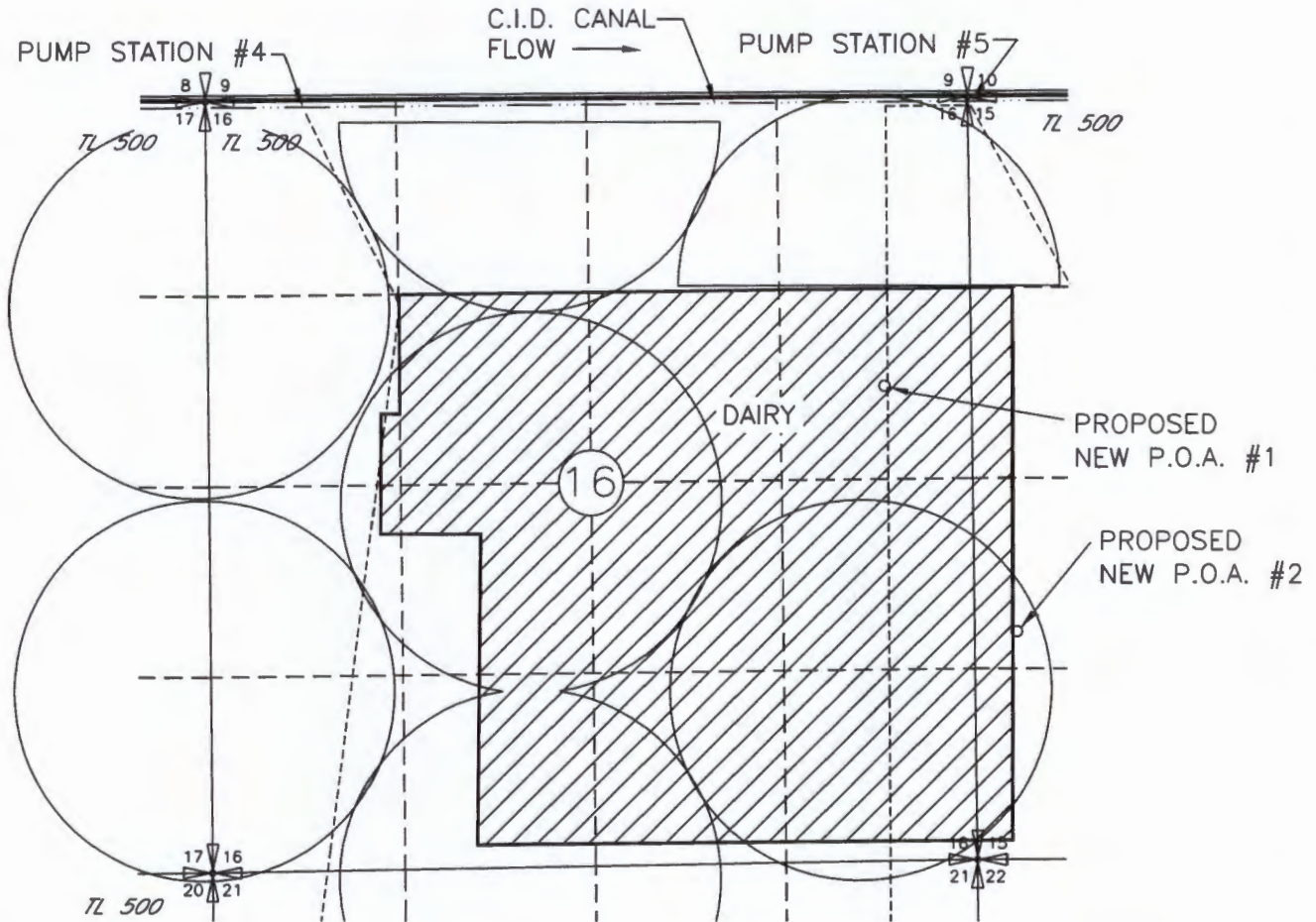
NOTE:
THE PURPOSE OF THIS MAP IS TO IDENTIFY THE APPROXIMATE LOCATION OF THE WATER RIGHT. IT IS NOT INTENDED TO PROVIDE INFORMATION RELATIVE TO THE LOCATION OF PROPERTY OWNERSHIP BOUNDARY LINES. PIPE LOCATIONS AND SIZES WHERE SHOWN WERE PROVIDED BY FARM OPERATIONAL PERSONNEL AND ARE APPROXIMATE LOCATIONS AND SIZES.

RECEIVED BY OWRD

JAN 15 2016

**TRANSFER APPLICATION MAP
SAGE HOLLOW RANCH, LLC TO WILLOW CREEK DAIRY
CERTIFICATES 49726, 49727, 55316, 55317
T3N, R26E, W.M., MORROW COUNTY**

**SHEET 6 OF 8
CERTIFICATE 55316 "TO MAP"**

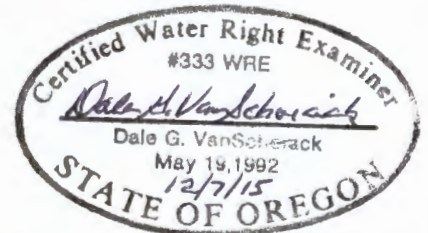


LEGEND



AGRICULTURAL USE FOR THE CONSTRUCTION AND OPERATION OF A DAIRY

- PROPOSED P.O.A. #1
WELL LOCATED 1970' S AND 600' W FROM THE NE COR SEC 16
- PROPOSED P.O.A. #2
WELL LOCATED 1580' N AND 290' E FROM THE SE COR SEC 16



Renew 6/30/16

NOTE:
THE PURPOSE OF THIS MAP IS TO IDENTIFY THE APPROXIMATE LOCATION OF THE WATER RIGHT. IT IS NOT INTENDED TO PROVIDE INFORMATION RELATIVE TO THE LOCATION OF PROPERTY OWNERSHIP BOUNDARY LINES, PIPE LOCATIONS AND SIZES WHERE SHOWN WERE PROVIDED BY FARM OPERATIONAL PERSONNEL AND ARE APPROXIMATE LOCATIONS AND SIZES.

RECEIVED BY OWRD

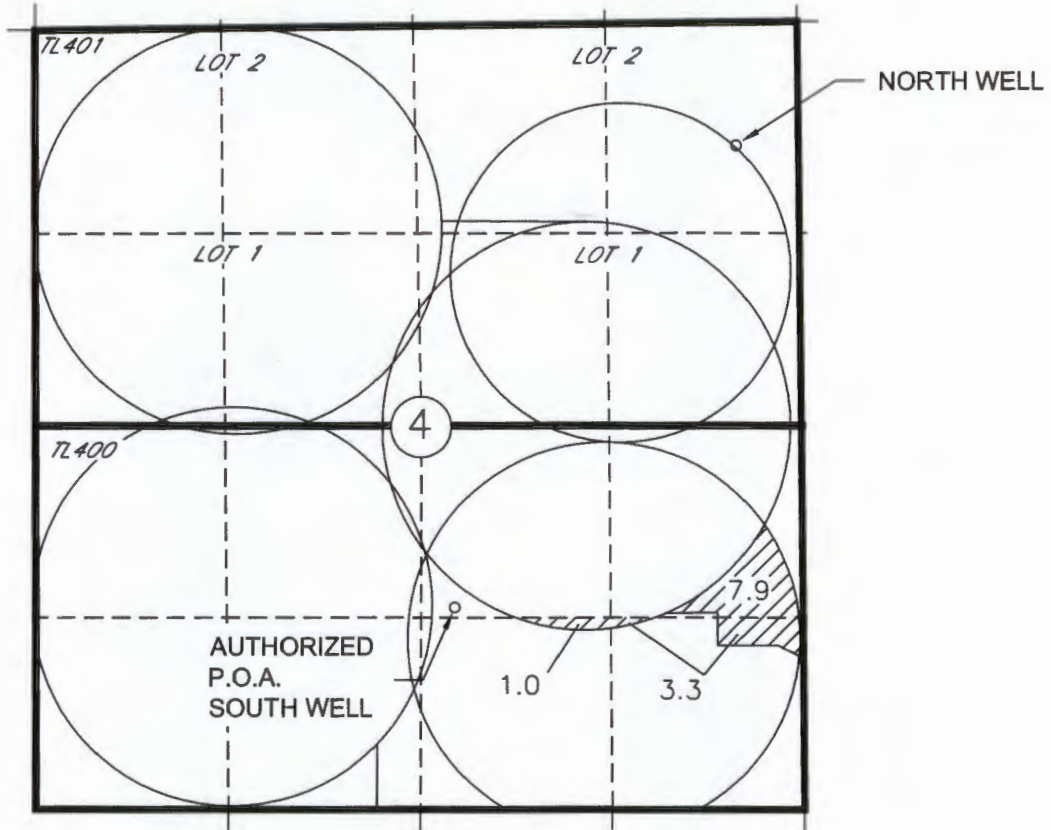
JAN 15 2016

T 12248

SALEM, OR

TRANSFER APPLICATION MAP
 SAGE HOLLOW RANCH, LLC TO WILLOW CREEK DAIRY
 CERTIFICATES 49726, 49727, 55316, 55317
 T3N, R26E, W.M., MORROW COUNTY

SHEET 7 OF 8
 CERTIFICATE 55317 "FROM MAP"

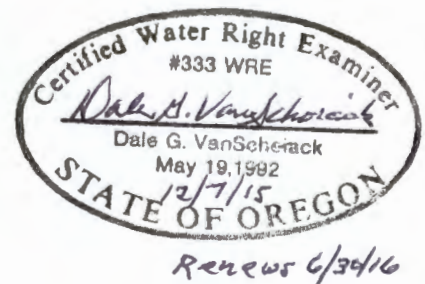
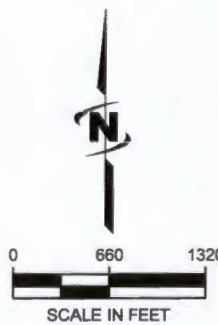


LEGEND



12.2 AC

- AUTHORIZED P.O.A. WELL
 1390' N AND 2390' W FROM THE
 SE COR OF SEC 4



RECEIVED BY OWRD

JAN 15 2016

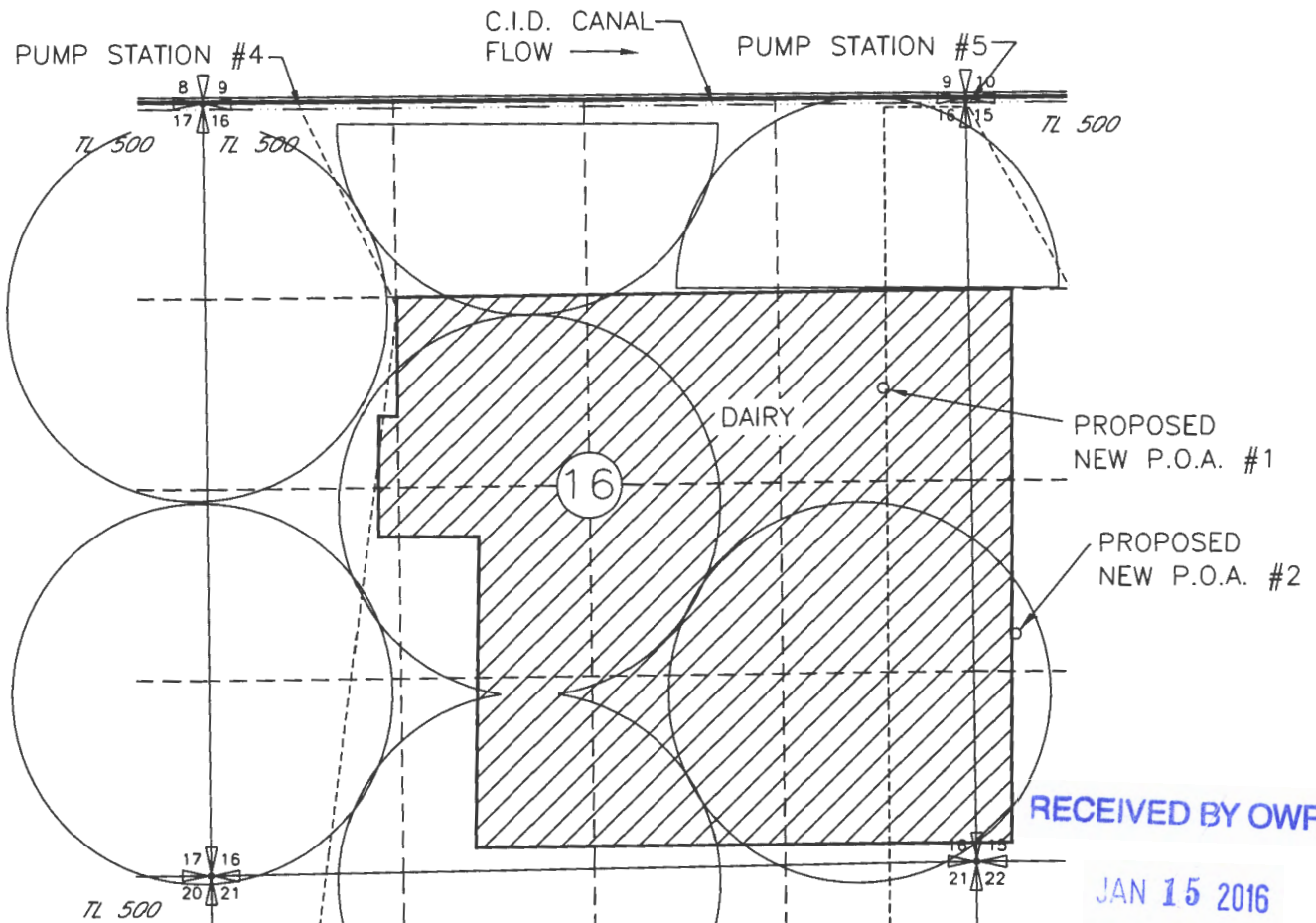
SALEM, OR

NOTE:
 THE PURPOSE OF THIS MAP IS TO IDENTIFY THE APPROXIMATE LOCATION OF THE WATER RIGHT. IT IS NOT INTENDED
 TO PROVIDE INFORMATION RELATIVE TO THE LOCATION OF PROPERTY OWNERSHIP BOUNDARY LINES. PIPE LOCATIONS
 AND SIZES WHERE SHOWN WERE PROVIDED BY FARM OPERATIONAL PERSONNEL AND ARE APPROXIMATE LOCATIONS AND
 SIZES.

T 12248

**TRANSFER APPLICATION MAP
SAGE HOLLOW RANCH, LLC TO WILLOW CREEK DAIRY
CERTIFICATES 49726, 49727, 55316, 55317
T3N, R26E, W.M., MORROW COUNTY**

**SHEET 8 OF 8
CERTIFICATE 55317 "TO MAP"**

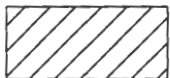


RECEIVED BY OWRD

JAN 15 2016

SALEM, OR

LEGEND



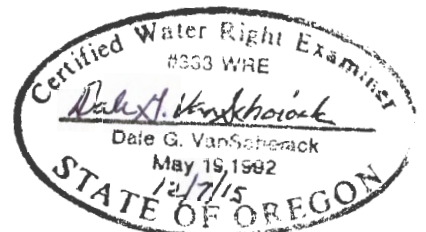
AGRICULTURAL USE FOR THE CONSTRUCTION AND OPERATION OF A DAIRY

- PROPOSED P.O.A. #1
WELL LOCATED 1970' S AND 600' W FROM THE NE COR SEC 16
- PROPOSED P.O.A. #2
WELL LOCATED 1580' N AND 290' E FROM THE SE COR SEC 16



0 660 1320

SCALE IN FEET



Renew 6/30/16

NOTE:
THE PURPOSE OF THIS MAP IS TO IDENTIFY THE APPROXIMATE LOCATION OF THE WATER RIGHT. IT IS NOT INTENDED TO PROVIDE INFORMATION RELATIVE TO THE LOCATION OF PROPERTY OWNERSHIP BOUNDARY LINES. PIPE LOCATIONS AND SIZES WHERE SHOWN WERE PROVIDED BY FARM OPERATIONAL PERSONNEL AND ARE APPROXIMATE LOCATIONS AND SIZES.