

LAND OWNERS WATER RESOURCES DEPT
 SALEM, OREGON
HARN 51765

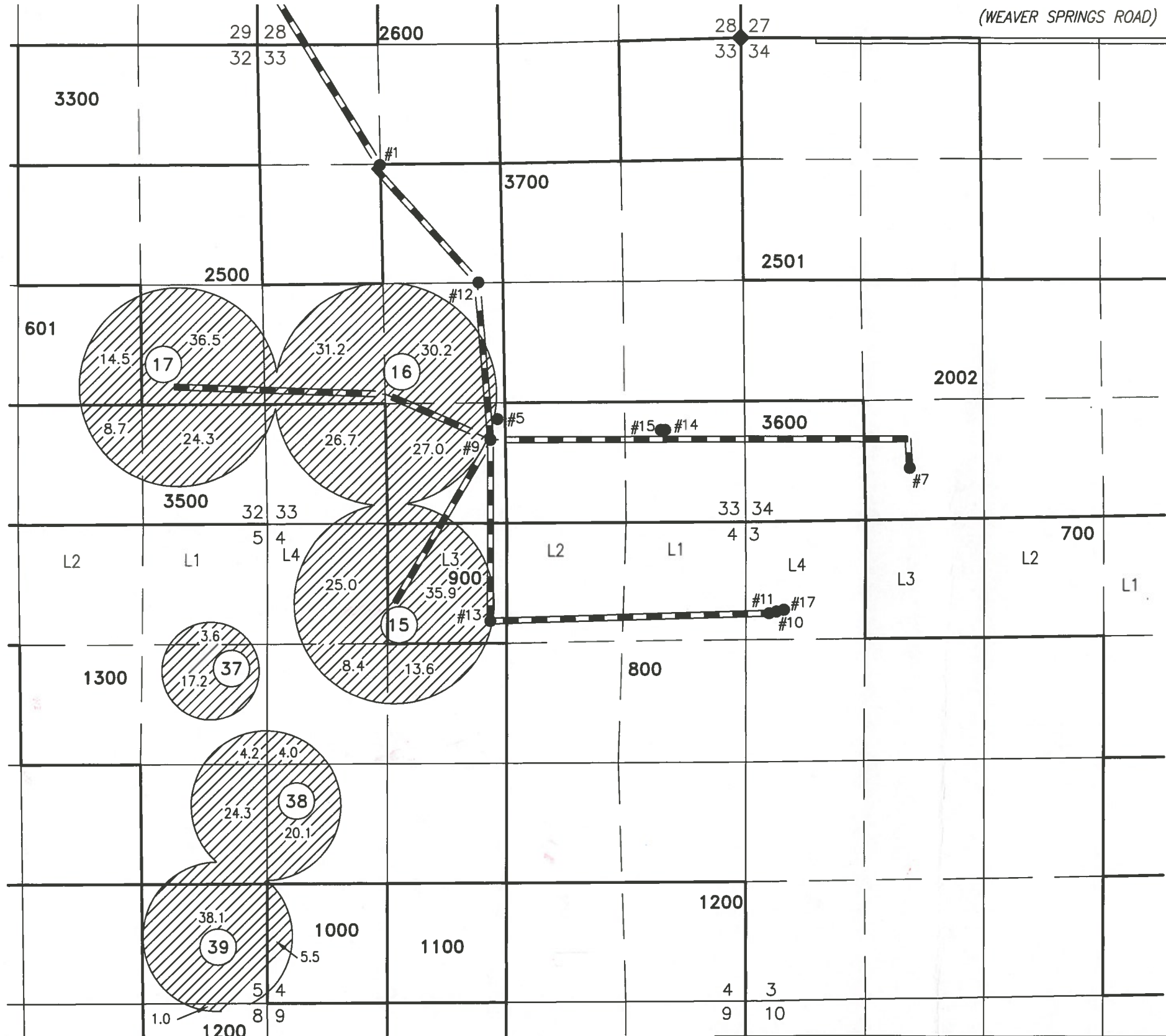
(WEAVER SPRINGS ROAD)

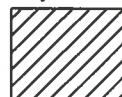
TRANSFER MAP TO ACCOMPANY APPLICATION TO ADD POINTS OF APPROPRIATION & CHANGE PLACE OF USE FOR RATTLESNAKE LAND & CATTLE

TAX LOTS 601, 2500, & 3500
IN SECTIONS 32, & 33, TOWNSHIP 25 SOUTH, RANGE 30 EAST, W.M. &
TAX LOTS 900, 1000, 1200, & 1300
SECTIONS 3, 4, & 8, TOWNSHIP 26 SOUTH, RANGE 30 EAST, W.M.
HARNEY COUNTY, OREGON

- #1
WELL #1 (HARN 1094) PROPOSED
1317' SOUTH & 1355' EAST FROM THE
NW CORNER SECTION 33.
- #5
WELL #5 (HARN 51146) PROPOSED
4195' SOUTH & 2672' WEST FROM THE
NE CORNER SECTION 33.
- #7
WELL #7 (HARN 51272) AUTHORIZED
4725' SOUTH & 1877' EAST FROM THE
NW CORNER SECTION 34.
- #9
WELL #9 (HARN 51448) AUTHORIZED
4423' SOUTH & 2750' WEST FROM THE
NE CORNER SECTION 33.
- #10
WELL #10 (HARN 51765) PROPOSED
6310' SOUTH & 415' EAST FROM THE
NW CORNER SECTION 34.
- #11
WELL #11 (HARN 51760) PROPOSED
6340' SOUTH & 330' EAST FROM THE
NW CORNER SECTION 34.
- #12
WELL #12 (HARN 51817) PROPOSED
2690' SOUTH & 28900' WEST FROM THE
NE CORNER SECTION 33.
- #13
WELL #13 (HARN 51445) PROPOSED
6415' SOUTH & 2745' WEST FROM THE
NE CORNER SECTION 33.
- #14
WELL #14 (HARN 51871) PROPOSED
4314' SOUTH & 870' WEST FROM THE
NE CORNER SECTION 33.
- #15
WELL #15 (HARN 51970) PROPOSED
4314' SOUTH & 920' WEST FROM THE
NE CORNER SECTION 33.
- #16
WELL #16 (HARN 52121) PROPOSED
1200' NORTH & 900' WEST FROM THE
SE CORNER SECTION 29.
- #17
WELL #17 (HARN 52154) PROPOSED
6300' SOUTH & 440' EAST FROM THE
NW CORNER SECTION 34.
- #18
WELL #18 (HARN 52170) PROPOSED
1200' NORTH & 850' WEST FROM THE
SE CORNER SECTION 29.

SCALE 4" = 1 MILE



 400.0 ACRES PRIMARY IRRIGATION FROM PERMIT G-16461 TRANSFERRED, AS SHOWN

1 OWNER'S PIVOT NUMBER

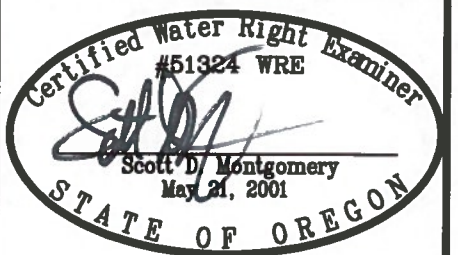
PROJECT No. 15-001

PREPARED AT THE REQUEST OF:
 ANDY ROOT
 524 HIGHWAY 20 N
 HINES, OR 97738

ALL POINTS ENGINEERING & SURVEYING, INC.

P.O. BOX 767
 TERREBONNE, OREGON 97760
 (541) 548-5833 PH
 Scott@APEandS.com
 www.APEandS.com

RECEIVED BY OWRD
 JAN 22 2016
 SALEM, OR

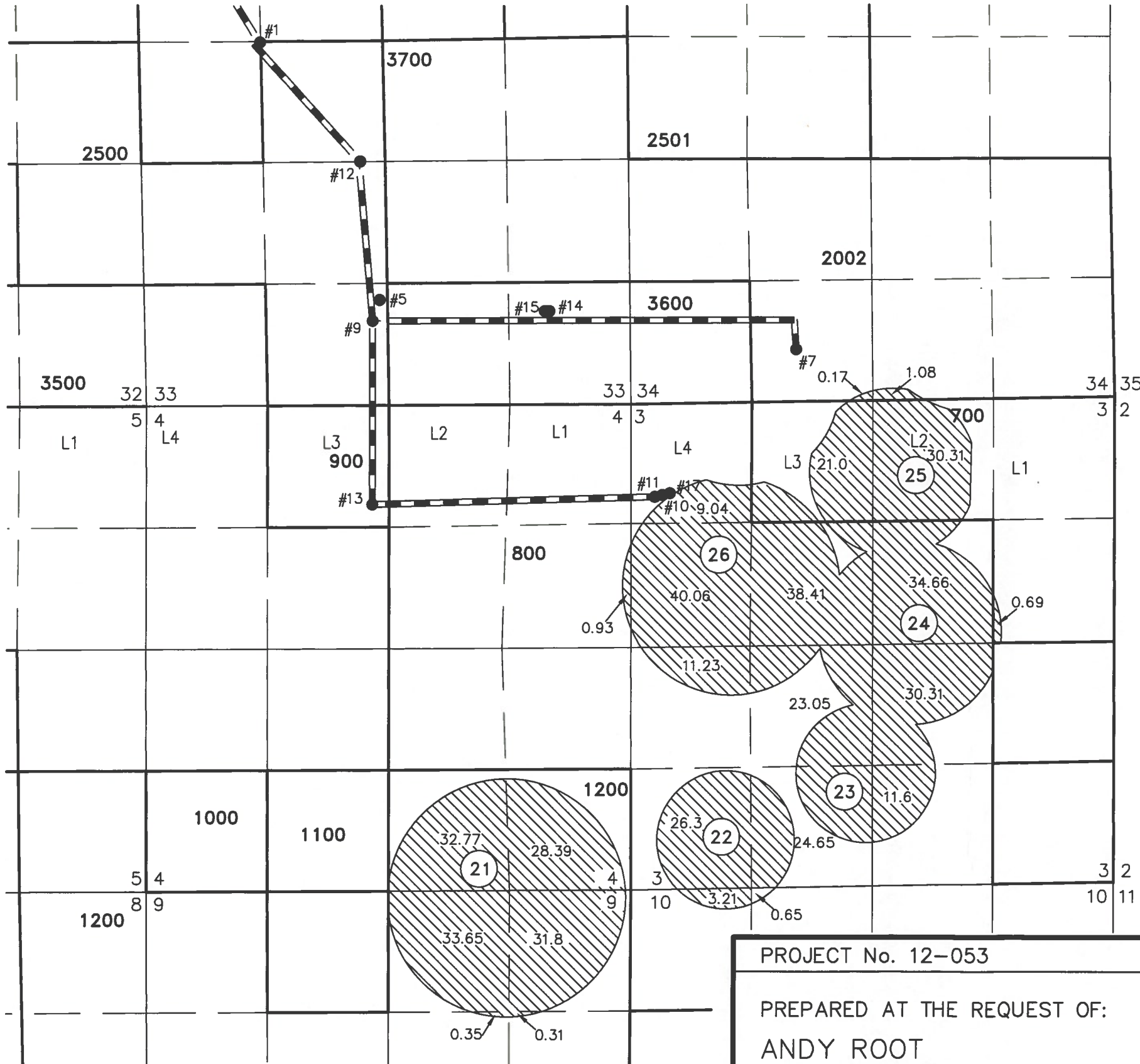


RENEWAL DATE: 12/31/2016

THIS MAP IS FOR THE PURPOSE OF LOCATING A WATER RIGHT ONLY AND HAS NO INTENT TO PROVIDE LEGAL DIMENSIONS OR THE LOCATION OF PROPERTY LINES.

TAX LOT 2002
 IN SECTION 34, TOWNSHIP 25 SOUTH, RANGE 30 EAST, W.M. &
 TAX LOTS 700, 800, & 1200
 IN SECTIONS 3, 4, 9, & 10
 HARNEY COUNTY, OREGON

TRANSFER MAP TO ACCOMPANY APPLICATION TO ADD POINTS OF APPROPRIATION FOR RATTLESNAKE LAND & CATTLE



- #1
WELL #1 (HARN 1094) PROPOSED
1317' SOUTH & 1355' WEST FROM THE
NW CORNER SECTION 33.
- #2
WELL #2 (HARN 51272) AUTHORIZED
4725' SOUTH & 1877' EAST FROM THE
NW CORNER SECTION 34.
- #3
WELL #3 (HARN 51445) AUTHORIZED
6415' SOUTH & 2745' WEST FROM THE
NE CORNER SECTION 33.
- #4
WELL #4 (HARN 51765) PROPOSED
6310' SOUTH & 415' EAST FROM THE
NW CORNER SECTION 34.
- #5
WELL #5 (HARN 51146) PROPOSED
4195' SOUTH & 2672' WEST FROM THE
NE CORNER SECTION 33.
- #6
WELL #6 (HARN 51760) PROPOSED
6340' SOUTH & 330' EAST FROM THE
NW CORNER SECTION 34.
- #7
WELL #7 (HARN 51272) AUTHORIZED
4725' SOUTH & 1877' EAST FROM THE
NW CORNER SECTION 34.
- #8
WELL #8 (HARN 51817) PROPOSED
2690' SOUTH & 28900' WEST FROM THE
NE CORNER SECTION 33.
- #9
WELL #9 (HARN 51448) AUTHORIZED
4423' SOUTH & 2750' WEST FROM THE
NE CORNER SECTION 33.
- #10
WELL #10 (HARN 51765) PROPOSED
6310' SOUTH & 415' EAST FROM THE
NW CORNER SECTION 34.
- #11
WELL #11 (HARN 51760) PROPOSED
6340' SOUTH & 330' EAST FROM THE
NW CORNER SECTION 34.
- #12
WELL #12 (HARN 51817) PROPOSED
2690' SOUTH & 28900' WEST FROM THE
NE CORNER SECTION 33.
- #13
WELL #13 (HARN 51445) AUTHORIZED
6415' SOUTH & 2745' WEST FROM THE
NE CORNER SECTION 33.
- #14
WELL #14 (HARN 51871) PROPOSED
4314' SOUTH & 870' WEST FROM THE
NE CORNER SECTION 33.
- #15
WELL #15 (HARN 51970) PROPOSED
4314' SOUTH & 920' WEST FROM THE
NE CORNER SECTION 33.
- #16
WELL #16 (HARN 52121) PROPOSED
1200' NORTH & 900' WEST FROM THE
SE CORNER SECTION 29.
- #17
WELL #17 (HARN 52154) PROPOSED
6300' SOUTH & 440' EAST FROM THE
NW CORNER SECTION 34.
- #18
WELL #18 (HARN 52170) PROPOSED
1200' NORTH & 850' WEST FROM THE
SE CORNER SECTION 29.

SCALE 4" = 1 MILE

BURIED 6 OR 8 INCH STEEL PIPE

① OWNER'S PIVOT NUMBER

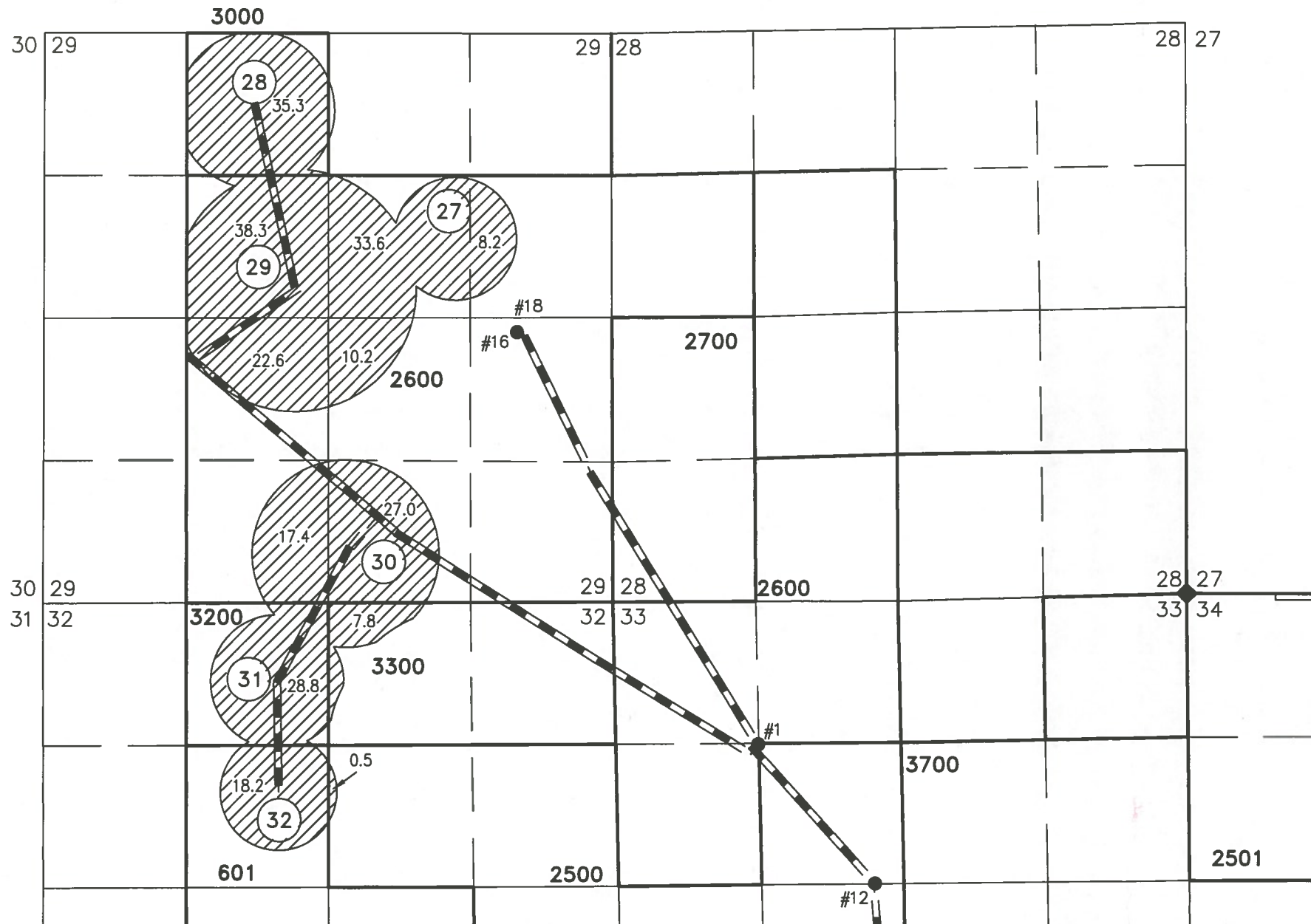
RECEIVED BY OWRD
 JAN 22 2016
 SALEM, OR
 434.62 ACRES PRIMARY
 IRRIGATION TRANSFERRED
 FROM PERMIT G-17127, AS
 SHOWN

THIS MAP IS FOR THE PURPOSE OF LOCATING A WATER
 RIGHT ONLY AND HAS NO INTENT TO PROVIDE LEGAL
 DIMENSIONS OR THE LOCATION OF PROPERTY LINES.

<p>PROJECT No. 12-053</p> <p>PREPARED AT THE REQUEST OF:</p> <p>ANDY ROOT 524 HIGHWAY 20 N HINES, OR 97738</p>	<p>ALL POINTS ENGINEERING & SURVEYING, INC.</p> <p>P.O. BOX 767 TERREBONNE, OREGON 97760 (541) 548-5833 PH Scott@APEandS.com www.APEandS.com</p>	<p style="text-align: center; font-size: small;">RENEWAL DATE: 12/31/2016</p>
---	--	---

TAX LOTS 601, 2500, 2600, 3000, 3200, & 3360
 IN SECTIONS 29 & 32, TOWNSHIP 25 SOUTH, RANGE 30 EAST, W.M.
 HARNEY COUNTY, OREGON

TRANSFER MAP TO ACCOMPANY APPLICATION TO ADD POINTS OF APPROPRIATION FOR RATTLESNAKE LAND & CATTLE



SCALE 4" = 1 MILE

- #1
WELL #1 (HARN 1094) PROPOSED
1317' SOUTH & 1355' EAST FROM THE
NW CORNER SECTION 33.
- #5
WELL #5 (HARN 51146) PROPOSED
4195' SOUTH & 2672' WEST FROM THE
NE CORNER SECTION 33.
- #7
WELL #7 (HARN 51272) AUTHORIZED
4725' SOUTH & 1877' EAST FROM THE
NW CORNER SECTION 34.
- #9
WELL #9 (HARN 51448) AUTHORIZED
4423' SOUTH & 2750' WEST FROM THE
NE CORNER SECTION 33.
- #10
WELL #10 (HARN 51765) PROPOSED
6310' SOUTH & 415' EAST FROM THE
NW CORNER SECTION 34.
- #11
WELL #11 (HARN 51760) PROPOSED
6340' SOUTH & 330' EAST FROM THE
NW CORNER SECTION 34.
- #12
WELL #12 (HARN 51817) PROPOSED
2690' SOUTH & 28900' WEST FROM THE
NE CORNER SECTION 33.
- #13
WELL #13 (HARN 51445) AUTHORIZED
6415' SOUTH & 2745' WEST FROM THE
NE CORNER SECTION 33.
- #14
WELL #14 (HARN 51871) PROPOSED
4314' SOUTH & 870' WEST FROM THE
NE CORNER SECTION 33.
- #15
WELL #15 (HARN 51970) PROPOSED
4314' SOUTH & 920' WEST FROM THE
NE CORNER SECTION 33.
- #16
WELL #16 (HARN 52121) PROPOSED
1200' NORTH & 900' WEST FROM THE
SE CORNER SECTION 29.
- #17
WELL #17 (HARN 52154) PROPOSED
6300' SOUTH & 440' EAST FROM THE
NW CORNER SECTION 34.
- #18
WELL #18 (HARN 52170) PROPOSED
1200' NORTH & 850' WEST FROM THE
SE CORNER SECTION 29.


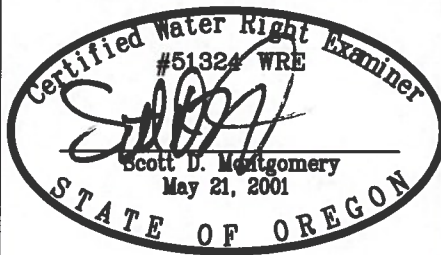
—●— BURIED 6 OR 8 INCH STEEL PIPE

① OWNER'S PIVOT NUMBER

▨ 247.9 ACRES PRIMARY IRRIGATION FROM G-17348, AS SHOWN

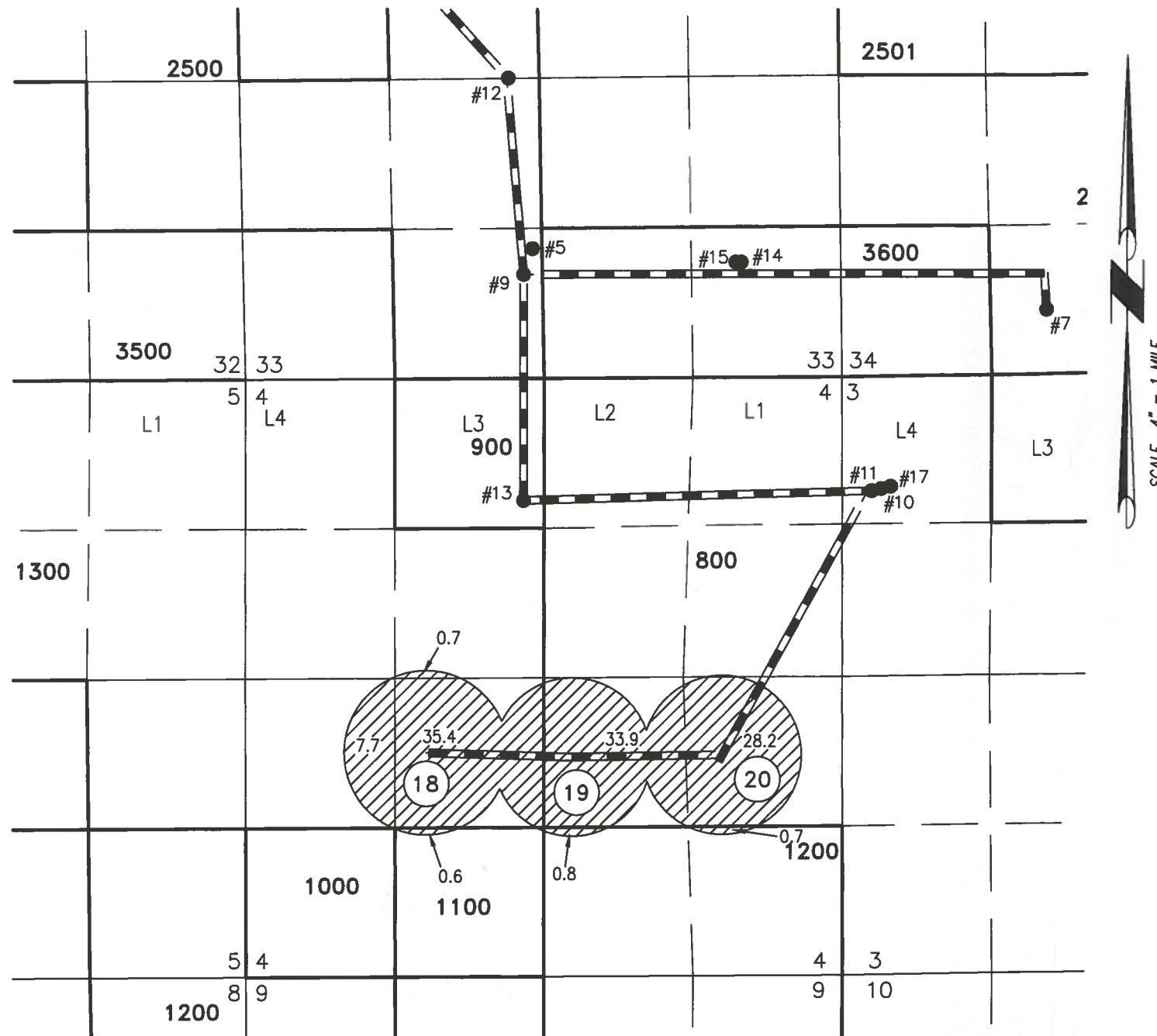
RECEIVED BY OWRD
 JAN 22 2016
 SALEM, OR

THIS MAP IS FOR THE PURPOSE OF LOCATING A WATER RIGHT ONLY AND HAS NO INTENT TO PROVIDE LEGAL DIMENSIONS OR THE LOCATION OF PROPERTY LINES.

PROJECT No. 12-053 PREPARED AT THE REQUEST OF: ANDY ROOT 524 HIGHWAY 20 N HINES, OR 97738	ALL POINTS ENGINEERING & SURVEYING, INC.  P.O. BOX 767 TERREBONNE, OREGON 97760 (541) 548-5833 PH Scott@APEandS.com www.APEandS.com	 RENEWAL DATE: 12/31/2016
---	---	---

TAX LOTS 800, 1100, 1200, & 1300
 IN SECTION 4, TOWNSHIP 26 SOUTH, RANGE 30 EAST, W.M.
 HARNEY COUNTY, OREGON

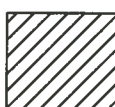
TRANSFER MAP TO ACCOMPANY APPLICATION TO ADD POINTS OF APPROPRIATION FOR RATTLESNAKE LAND & CATTLE



- #1
WELL #1 (HARN 1094) PROPOSED
1317' SOUTH & 1355' EAST FROM THE
NW CORNER SECTION 33.
- #5
WELL #5 (HARN 51146) PROPOSED
4195' SOUTH & 2672' WEST FROM THE
NE CORNER SECTION 33.
- #7
WELL #7 (HARN 51272) AUTHORIZED
4725' SOUTH & 1877' EAST FROM THE
NW CORNER SECTION 34.
- #9
WELL #9 (HARN 51448) AUTHORIZED
4423' SOUTH & 2750' WEST FROM THE
NE CORNER SECTION 33.
- #10
WELL #10 (HARN 51765) PROPOSED
6310' SOUTH & 415' EAST FROM THE
NW CORNER SECTION 34.
- #11
WELL #11 (HARN 51760) PROPOSED
6340' SOUTH & 330' EAST FROM THE
NW CORNER SECTION 34.
- #12
WELL #12 (HARN 51817) PROPOSED
2690' SOUTH & 28900' WEST FROM THE
NE CORNER SECTION 33.
- #13
WELL #13 (HARN 51445) AUTHORIZED
6415' SOUTH & 2745' WEST FROM THE
NE CORNER SECTION 33.
- #14
WELL #14 (HARN 51871) PROPOSED
4314' SOUTH & 870' WEST FROM THE
NE CORNER SECTION 33.
- #15
WELL #15 (HARN 51970) PROPOSED
4314' SOUTH & 920' WEST FROM THE
NE CORNER SECTION 33.
- #16
WELL #16 (HARN 52121) PROPOSED
1200' NORTH & 900' WEST FROM THE
SE CORNER SECTION 29.
- #17
WELL #17 (HARN 52154) PROPOSED
6300' SOUTH & 440' EAST FROM THE
NW CORNER SECTION 34.
- #18
WELL #18 (HARN 52170) PROPOSED
1200' NORTH & 850' WEST FROM THE
SE CORNER SECTION 29.

— BURIED 6 OR 8 INCH STEEL PIPE

① OWNER'S PIVOT NUMBER


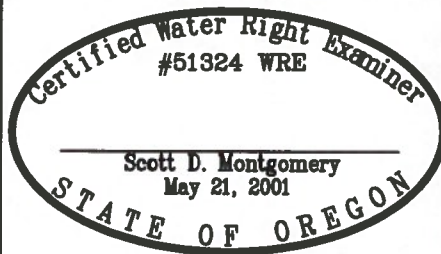
 108.0 ACRES PRIMARY IRRIGATION FROM G-17348, AS SHOWN

THIS MAP IS FOR THE PURPOSE OF LOCATING A WATER RIGHT ONLY AND HAS NO INTENT TO PROVIDE LEGAL DIMENSIONS OR THE LOCATION OF PROPERTY LINES.

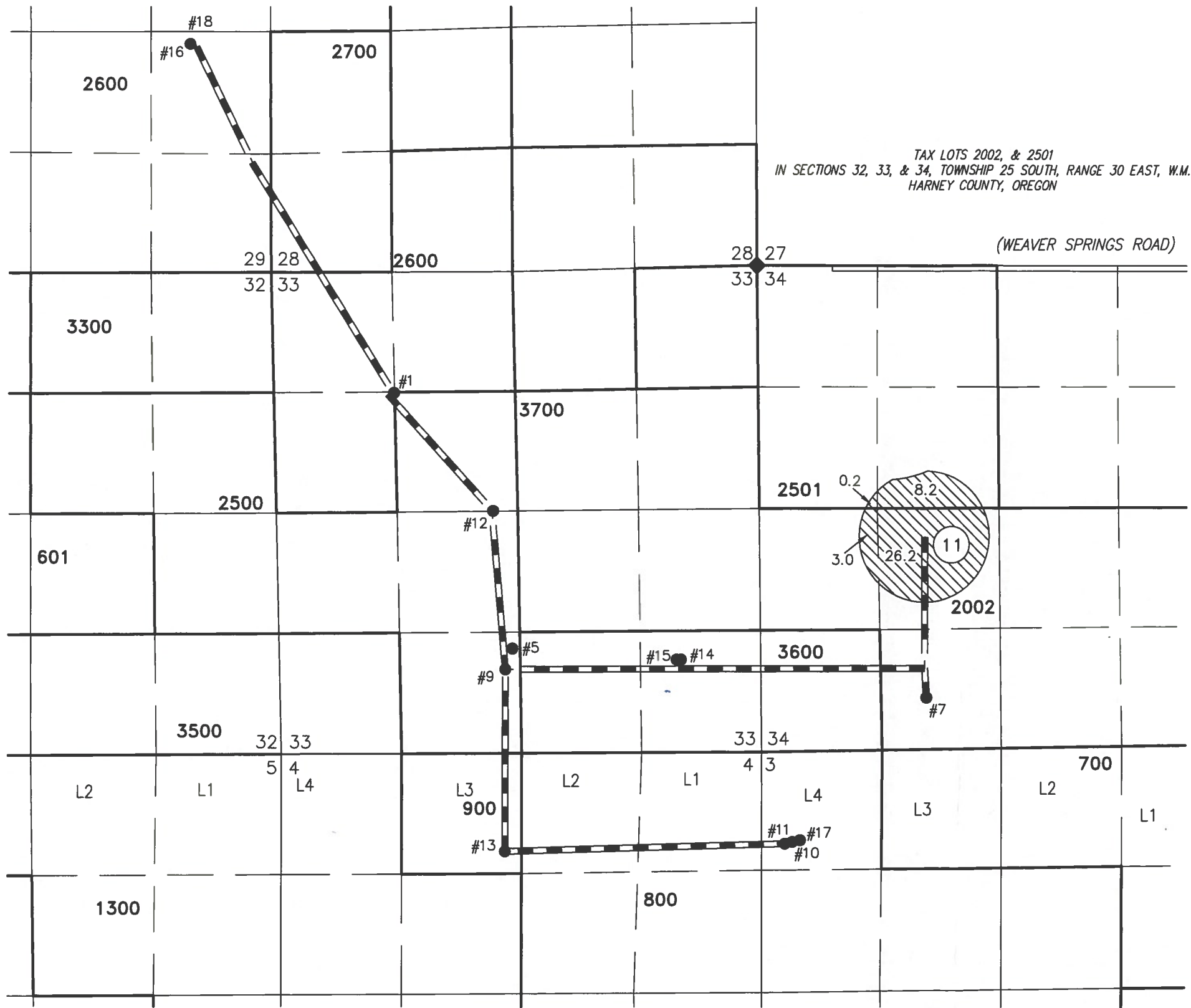
RECEIVED BY OWRD

JAN 22 2016

SALEM, OR

PROJECT No. 12-053 PREPARED AT THE REQUEST OF: ANDY ROOT 524 HIGHWAY 20 N HINES, OR 97738	ALL POINTS ENGINEERING & SURVEYING, INC.  P.O. BOX 767 TERREBONNE, OREGON 97760 (541) 548-5833 PH Scott@APEandS.com www.APEandS.com	 RENEWAL DATE: 12/31/2016
---	---	---

TRANSFER MAP TO ACCOMPANY
APPLICATION TO ADD POINTS OF
APPROPRIATION & CHANGE PLACE OF
USE FOR
RATTLESNAKE LAND & CATTLE



TAX LOTS 2002, & 2501
IN SECTIONS 32, 33, & 34, TOWNSHIP 25 SOUTH, RANGE 30 EAST, W.M.
HARNEY COUNTY, OREGON

(WEAVER SPRINGS ROAD)

SCALE 4" = 1 MILE

- #1
WELL #1 (HARN 1094) PROPOSED
1317' SOUTH & 1355' EAST FROM THE
NW CORNER SECTION 33.
- #5
WELL #5 (HARN 51146) PROPOSED
4195' SOUTH & 2672' WEST FROM THE
NE CORNER SECTION 33.
- #7
WELL #7 (HARN 51272) AUTHORIZED
4725' SOUTH & 1877' EAST FROM THE
NW CORNER SECTION 34.
- #9
WELL #9 (HARN 51448) AUTHORIZED
4423' SOUTH & 2750' WEST FROM THE
NE CORNER SECTION 33.
- #10
WELL #10 (HARN 51765) PROPOSED
6310' SOUTH & 415' EAST FROM THE
NW CORNER SECTION 34.
- #11
WELL #11 (HARN 51760) PROPOSED
6340' SOUTH & 330' EAST FROM THE
NW CORNER SECTION 34.
- #12
WELL #12 (HARN 51817) PROPOSED
2690' SOUTH & 28900' WEST FROM THE
NE CORNER SECTION 33.
- #13
WELL #13 (HARN 51445) PROPOSED
6415' SOUTH & 2745' WEST FROM THE
NE CORNER SECTION 33.
- #14
WELL #14 (HARN 51871) PROPOSED
4314' SOUTH & 870' WEST FROM THE
NE CORNER SECTION 33.
- #15
WELL #15 (HARN 51970) PROPOSED
4314' SOUTH & 920' WEST FROM THE
NE CORNER SECTION 33.
- #16
WELL #16 (HARN 52121) PROPOSED
1200' NORTH & 900' WEST FROM THE
SE CORNER SECTION 29.
- #17
WELL #17 (HARN 52154) PROPOSED
6300' SOUTH & 440' EAST FROM THE
NW CORNER SECTION 34.
- #18
WELL #18 (HARN 52170) PROPOSED
1200' NORTH & 850' WEST FROM THE
SE CORNER SECTION 29.

RECEIVED BY OWRD

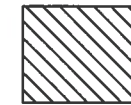
JAN 22 2016

SALEM, OR

THIS MAP IS FOR THE PURPOSE OF LOCATING A WATER
RIGHT ONLY AND HAS NO INTENT TO PROVIDE LEGAL
DIMENSIONS OR THE LOCATION OF PROPERTY LINES.

BURIED 6 OR 8 INCH STEEL PIPE

1 OWNER'S PIVOT NUMBER

 37.6 ACRES PRIMARY
IRRIGATION FROM PERMIT
G-16829 TRANSFERRED, AS
SHOWN

PROJECT No. 15-001

PREPARED AT THE REQUEST OF:
ANDY ROOT
524 HIGHWAY 20 N
HINES, OR 97738

ALL POINTS ENGINEERING
& SURVEYING, INC.



P.O. BOX 767
TERREBONNE, OREGON 97760
(541) 548-5833 PH
Scott@APEandS.com
www.APEandS.com



RENEWAL DATE: 12/31/2016

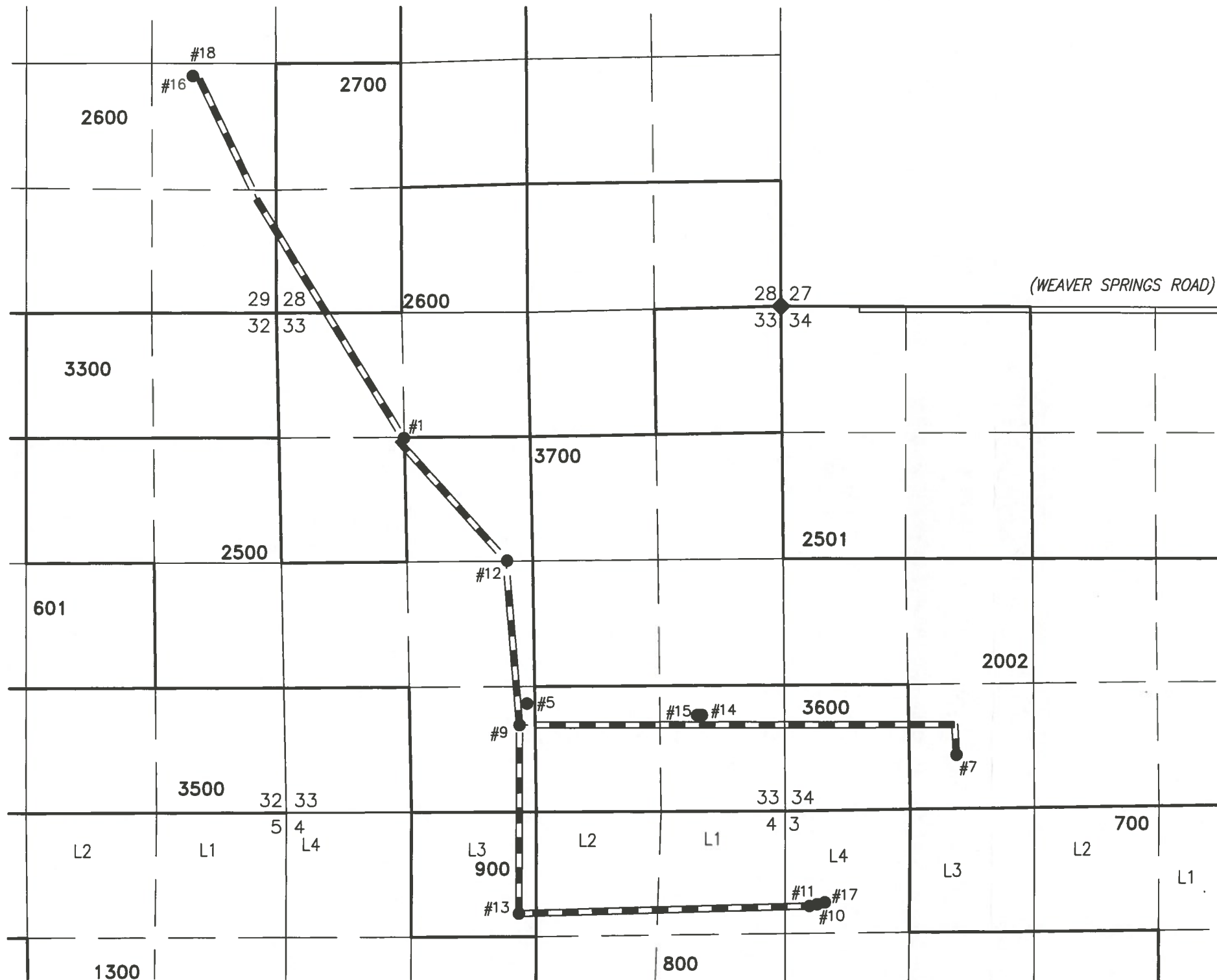
TRANSFER MAP TO ACCOMPANY APPLICATION TO ADD POINTS OF APPROPRIATION FOR RATTLESNAKE LAND & CATTLE

TAX LOTS 2002, 2500, 2600, & 3600
IN SECTIONS 29, 33, & 34, TOWNSHIP 25 SOUTH, RANGE 30 EAST, W.M. &
TAX LOTS 800 & 900
IN SECTIONS 3 & 4, TOWNSHIP 26 SOUTH, RANGE 30 EAST, W.M.
HARNEY COUNTY, OREGON

RECEIVED BY OWRI

JAN 22 2016

SALEM, OR

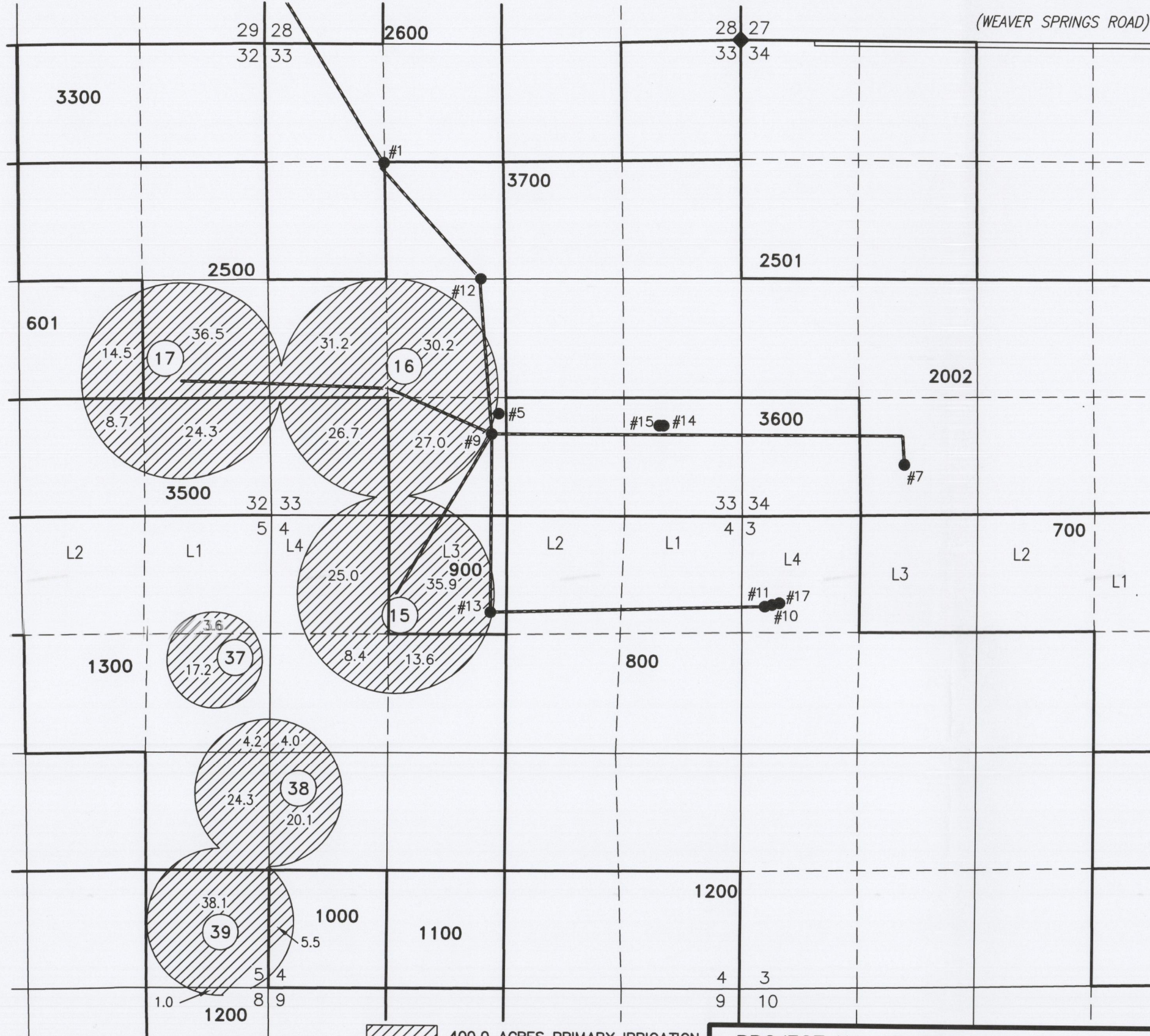


SCALE 4" = 1 MILE

- #1
WELL #1 (HARN 1094) PROPOSED
1317' SOUTH & 1355' EAST FROM THE
NW CORNER SECTION 33.
- #5
WELL #5 (HARN 51146) PROPOSED
4195' SOUTH & 2672' WEST FROM THE
NE CORNER SECTION 33.
- #7
WELL #7 (HARN 51272) AUTHORIZED
4725' SOUTH & 1877' EAST FROM THE
NW CORNER SECTION 34.
- #9
WELL #9 (HARN 51448) AUTHORIZED
4423' SOUTH & 2750' WEST FROM THE
NE CORNER SECTION 33.
- #10
WELL #10 (HARN 51765) PROPOSED
6310' SOUTH & 415' EAST FROM THE
NW CORNER SECTION 34.
- #11
WELL #11 (HARN 51760) PROPOSED
6340' SOUTH & 330' EAST FROM THE
NW CORNER SECTION 34.
- #12
WELL #12 (HARN 51817) PROPOSED
2690' SOUTH & 28900' WEST FROM THE
NE CORNER SECTION 33.
- #13
WELL #13 (HARN 51445) AUTHORIZED
6415' SOUTH & 2745' WEST FROM THE
NE CORNER SECTION 33.
- #14
WELL #14 (HARN 51871) PROPOSED
4314' SOUTH & 870' WEST FROM THE
NE CORNER SECTION 33.
- #15
WELL #15 (HARN 51970) PROPOSED
4314' SOUTH & 920' WEST FROM THE
NE CORNER SECTION 33.
- #16
WELL #16 (HARN 52121) PROPOSED
1200' NORTH & 900' WEST FROM THE
SE CORNER SECTION 29.
- #17
WELL #17 (HARN 52154) PROPOSED
6300' SOUTH & 440' EAST FROM THE
NW CORNER SECTION 34.
- #18
WELL #18 (HARN 52170) PROPOSED
1200' NORTH & 850' WEST FROM THE
SE CORNER SECTION 29.

BURIED 6 OR 8 INCH STEEL PIPE

<p>PROJECT No. 12-053</p> <p>PREPARED AT THE REQUEST OF:</p> <p>ANDY ROOT 524 HIGHWAY 20 N HINES, OR 97738</p>	<p>ALL POINTS ENGINEERING & SURVEYING, INC.</p> <p>P.O. BOX 767 TERREBONNE, OREGON 97760 (541) 548-5833 PH Scott@APEandS.com www.APEandS.com</p>	<p>RENEWAL DATE: 12/31/2016</p>
--	---	---------------------------------



TRANSFER MAP TO ACCOMPANY
APPLICATION TO ADD POINTS OF
APPROPRIATION & CHANGE PLACE OF
USE FOR
RATTLESNAKE LAND & CATTLE

TAX LOTS 601, 2500, & 3500
IN SECTIONS 32, & 33, TOWNSHIP 25 SOUTH, RANGE 30 EAST, W.M. &
TAX LOTS 900, 1000, 1200, & 1300
SECTIONS 3, 4, & 8, TOWNSHIP 26 SOUTH, RANGE 30 EAST, W.M.
HARNEY COUNTY, OREGON

- #1
WELL #1 (HARN 1094) PROPOSED
1317' SOUTH & 1355' EAST FROM THE
NW CORNER SECTION 33.
- #5
WELL #5 (HARN 51146) PROPOSED
4195' SOUTH & 2672' WEST FROM THE
NE CORNER SECTION 33.
- #7
WELL #7 (HARN 51272) AUTHORIZED
4725' SOUTH & 1877' EAST FROM THE
NW CORNER SECTION 34.
- #9
WELL #9 (HARN 51448) AUTHORIZED
4423' SOUTH & 2750' WEST FROM THE
NE CORNER SECTION 33.
- #10
WELL #10 (HARN 51765) PROPOSED
6310' SOUTH & 415' EAST FROM THE
NW CORNER SECTION 34.
- #11
WELL #11 (HARN 51760) PROPOSED
6340' SOUTH & 330' EAST FROM THE
NW CORNER SECTION 34.
- #12
WELL #12 (HARN 51817) PROPOSED
2690' SOUTH & 28900' WEST FROM THE
NE CORNER SECTION 33.
- #13
WELL #13 (HARN 51445) PROPOSED
6415' SOUTH & 2745' WEST FROM THE
NE CORNER SECTION 33.
- #14
WELL #14 (HARN 51871) PROPOSED
4314' SOUTH & 870' WEST FROM THE
NE CORNER SECTION 33.
- #15
WELL #15 (HARN 51970) PROPOSED
4314' SOUTH & 920' WEST FROM THE
NE CORNER SECTION 33.
- #16
WELL #16 (HARN 52121) PROPOSED
1200' NORTH & 900' WEST FROM THE S
1/16 CORNER OF SECTIONS 28 & 29.
- #17
WELL #17 (HARN 52154) PROPOSED
6300' SOUTH & 440' EAST FROM THE
NW CORNER SECTION 34.
- #18
WELL #18 (HARN 52170) PROPOSED
1200' NORTH & 850' WEST FROM THE S
1/16 CORNER OF SECTIONS 28 & 29.

SCALE 4" = 1 MILE

BURIED 6 OR 8 INCH STEEL PIPE

400.0 ACRES PRIMARY IRRIGATION
FROM PERMIT G-16461
TRANSFERRED, AS SHOWN

1 OWNER'S PIVOT NUMBER

RECEIVED BY OWRD

JUN 16 2016

SALEM, OR

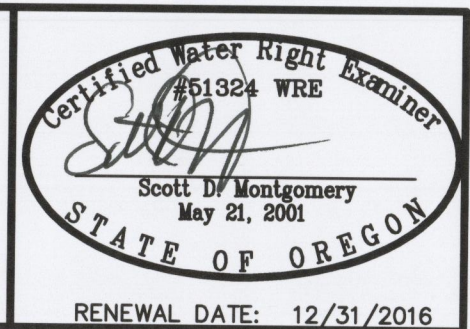
PROJECT No. 15-001

PREPARED AT THE REQUEST OF:
ANDY ROOT
524 HIGHWAY 20 N
HINES, OR 97738

**ALL POINTS ENGINEERING
& SURVEYING, INC.**



P.O. BOX 767
TERREBONNE, OREGON 97760
(541) 548-5833 PH
Scott@APEandS.com
www.APEandS.com



RECEIVED BY OWRD

JUN 09 2016

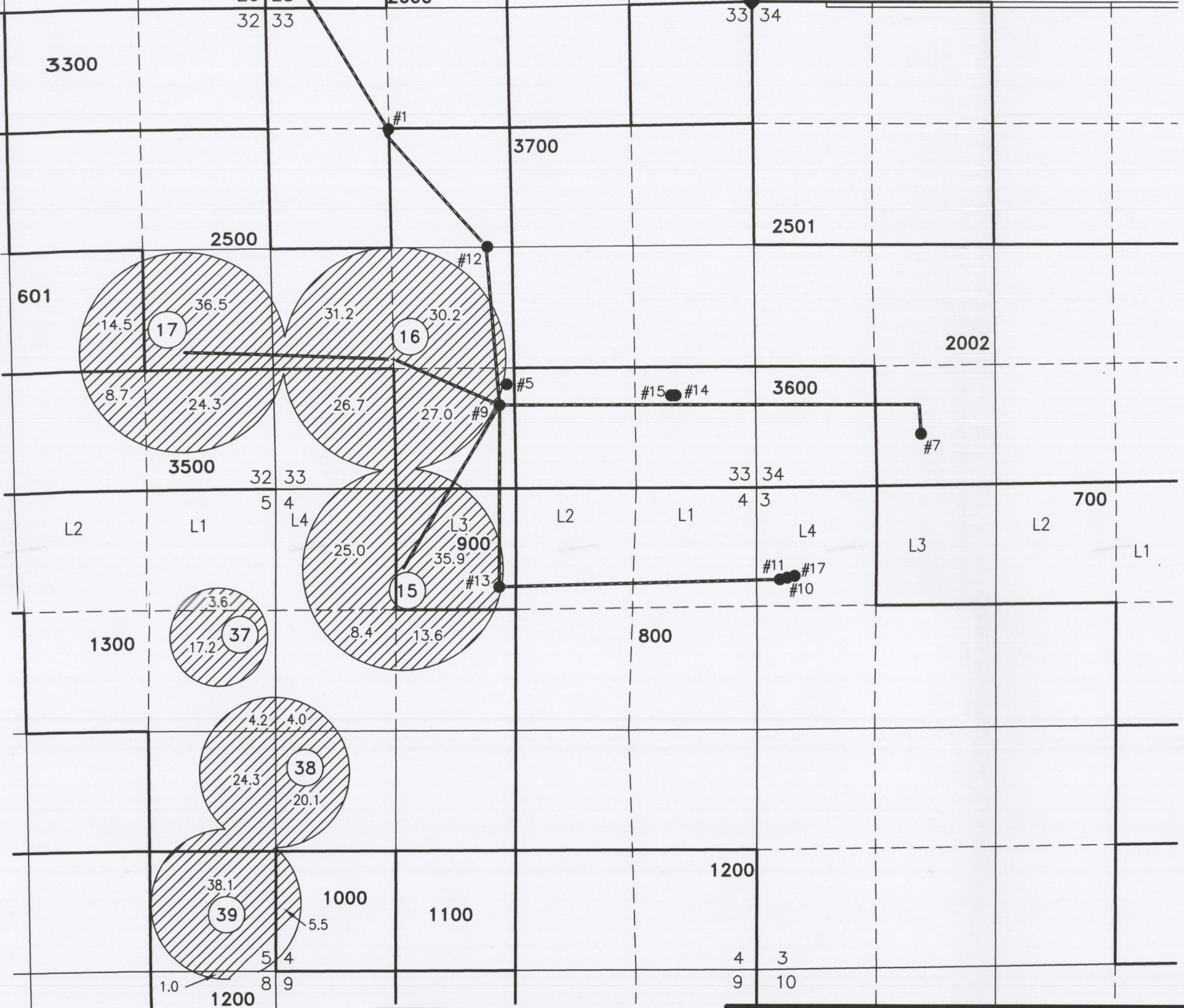
SALEM, OR

T-12257

**TRANSFER MAP TO ACCOMPANY
APPLICATION TO ADD POINTS OF
APPROPRIATION & CHANGE PLACE OF
USE FOR
RATTLESNAKE LAND & CATTLE**

TAX LOTS 601, 2500, & 3500
IN SECTIONS 32, & 33, TOWNSHIP 25 SOUTH, RANGE 30 EAST, W.M. &
TAX LOTS 900, 1000, 1200, & 1300
SECTIONS 3, 4, & 8, TOWNSHIP 26 SOUTH, RANGE 30 EAST, W.M.
HARNEY COUNTY, OREGON

- #1
WELL #1 (HARN 1094) PROPOSED
1317' SOUTH & 1355' EAST FROM THE
NW CORNER SECTION 33.
- #5
WELL #5 (HARN 51146) PROPOSED
4195' SOUTH & 2672' WEST FROM THE
NE CORNER SECTION 33.
- #7
WELL #7 (HARN 51272) AUTHORIZED
4725' SOUTH & 1877' EAST FROM THE
NW CORNER SECTION 34.
- #9
WELL #9 (HARN 51448) AUTHORIZED
4423' SOUTH & 2750' WEST FROM THE
NE CORNER SECTION 33.
- #10
WELL #10 (HARN 51765) PROPOSED
6310' SOUTH & 415' EAST FROM THE
NW CORNER SECTION 34.
- #11
WELL #11 (HARN 51760) PROPOSED
6340' SOUTH & 330' EAST FROM THE
NW CORNER SECTION 34.
- #12
WELL #12 (HARN 51817) PROPOSED
2690' SOUTH & 28900' WEST FROM THE
NE CORNER SECTION 33.
- #13
WELL #13 (HARN 51445) PROPOSED
6415' SOUTH & 2745' WEST FROM THE
NE CORNER SECTION 33.
- #14
WELL #14 (HARN 51871) PROPOSED
4314' SOUTH & 870' WEST FROM THE
NE CORNER SECTION 33.
- #15
WELL #15 (HARN 51970) PROPOSED
4314' SOUTH & 920' WEST FROM THE
NE CORNER SECTION 33.
- #16
WELL #16 (HARN 52121) PROPOSED
1200' NORTH & 900' WEST FROM THE S
1/16 CORNER OF SECTIONS 28 & 29.
- #17
WELL #17 (HARN 52154) PROPOSED
6300' SOUTH & 440' EAST FROM THE
NW CORNER SECTION 34.
- #18
WELL #18 (HARN 52170) PROPOSED
1200' NORTH & 850' WEST FROM THE S
1/16 CORNER OF SECTIONS 28 & 29.



400.0 ACRES PRIMARY IRRIGATION
FROM PERMIT G-16461
TRANSFERRED, AS SHOWN

① OWNER'S PIVOT NUMBER

RECEIVED BY OWRD

JUN 6 2001

SALEM OR

PROJECT No. 15-001

PREPARED AT THE REQUEST OF:

ANDY ROOT
524 HIGHWAY 20 N
HINES, OR 97738

**ALL POINTS ENGINEERING
& SURVEYING, INC.**

P.O. BOX 767
TERREBONNE, OREGON 97760
(541) 548-5833 PH
Scott@APEandS.com
www.APEandS.com

Certified Water Right Examiner
#51324 WRE

Scott D. Montgomery
Scott D. Montgomery
May 21, 2001

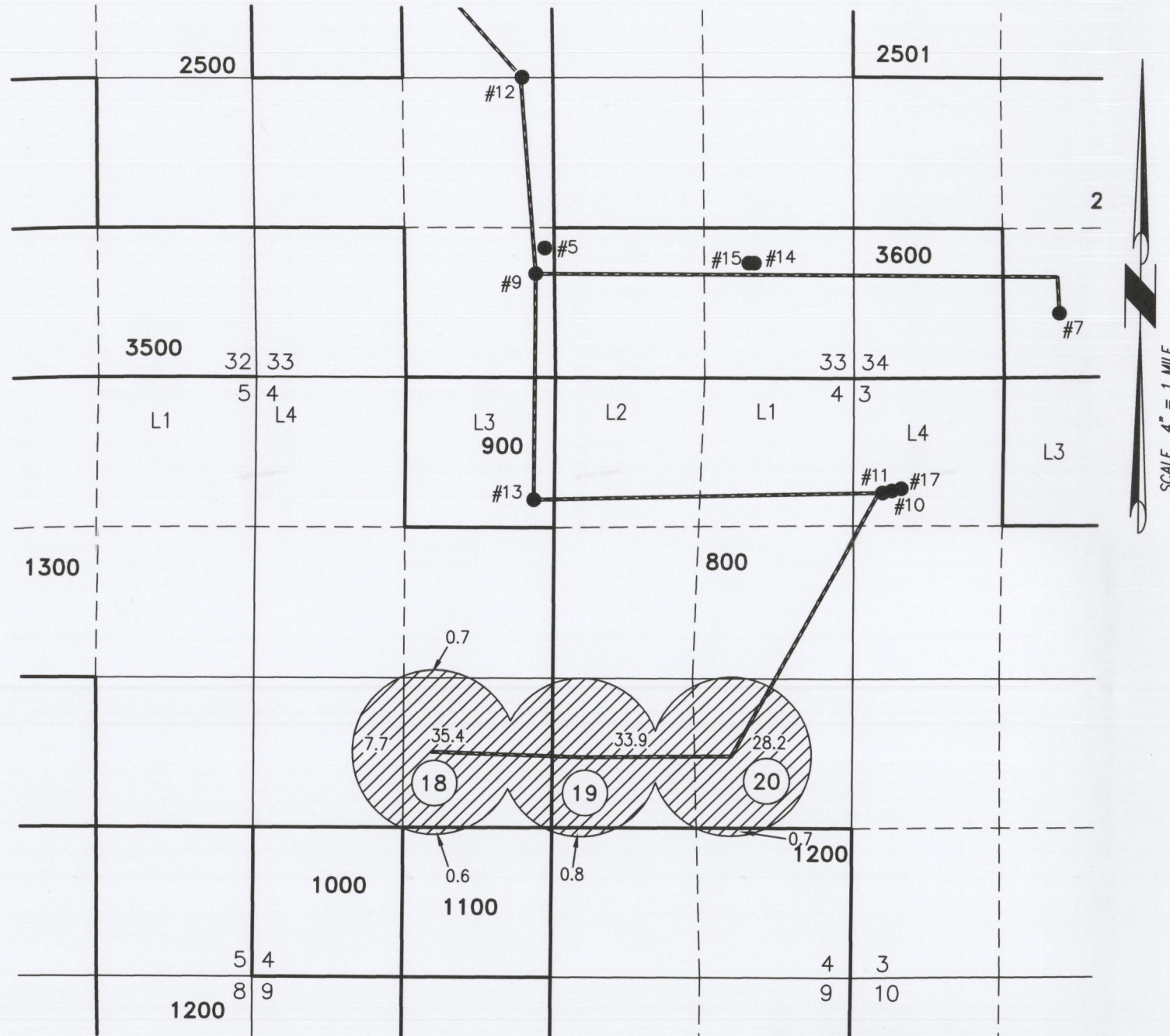
STATE OF OREGON

RENEWAL DATE: 12/31/2016

THIS MAP IS FOR THE PURPOSE OF LOCATING A WATER
RIGHT ONLY AND HAS NO INTENT TO PROVIDE LEGAL
DIMENSIONS OR THE LOCATION OF PROPERTY LINES.

TAX LOTS 800, 1100, 1200, & 1300
 IN SECTION 4, TOWNSHIP 26 SOUTH, RANGE 30 EAST, W.M.
 HARNEY COUNTY, OREGON

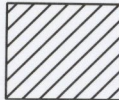
TRANSFER MAP TO ACCOMPANY APPLICATION TO ADD POINTS OF APPROPRIATION FOR RATTLESNAKE LAND & CATTLE



- #1
WELL #1 (HARN 1094) PROPOSED
1317' SOUTH & 1355' EAST FROM THE
NW CORNER SECTION 33.
- #5
WELL #5 (HARN 51146) PROPOSED
4195' SOUTH & 2672' WEST FROM THE
NE CORNER SECTION 33.
- #7
WELL #7 (HARN 51272) AUTHORIZED
4725' SOUTH & 1877' EAST FROM THE
NW CORNER SECTION 34.
- #9
WELL #9 (HARN 51448) AUTHORIZED
4423' SOUTH & 2750' WEST FROM THE
NE CORNER SECTION 33.
- #10
WELL #10 (HARN 51765) PROPOSED
6310' SOUTH & 415' EAST FROM THE
NW CORNER SECTION 34.
- #11
WELL #11 (HARN 51760) PROPOSED
6340' SOUTH & 330' EAST FROM THE
NW CORNER SECTION 34.
- #12
WELL #12 (HARN 51817) PROPOSED
2690' SOUTH & 28900' WEST FROM THE
NE CORNER SECTION 33.
- #13
WELL #13 (HARN 51445) AUTHORIZED
6415' SOUTH & 2745' WEST FROM THE
NE CORNER SECTION 33.
- #14
WELL #14 (HARN 51871) PROPOSED
4314' SOUTH & 870' WEST FROM THE
NE CORNER SECTION 33.
- #15
WELL #15 (HARN 51970) PROPOSED
4314' SOUTH & 920' WEST FROM THE
NE CORNER SECTION 33.
- #16
WELL #16 (HARN 52121) PROPOSED
1200' NORTH & 900' WEST FROM THE S
1/16 CORNER OF SECTIONS 28 & 29.
- #17
WELL #17 (HARN 52154) PROPOSED
6300' SOUTH & 440' EAST FROM THE
NW CORNER SECTION 34.
- #18
WELL #18 (HARN 52170) PROPOSED
1200' NORTH & 850' WEST FROM THE S
1/16 CORNER OF SECTIONS 28 & 29.

— BURIED 6 OR 8 INCH STEEL PIPE

① OWNER'S PIVOT NUMBER

 108.0 ACRES PRIMARY IRRIGATION FROM G-17348, AS SHOWN

THIS MAP IS FOR THE PURPOSE OF LOCATING A WATER RIGHT ONLY AND HAS NO INTENT TO PROVIDE LEGAL DIMENSIONS OR THE LOCATION OF PROPERTY LINES.

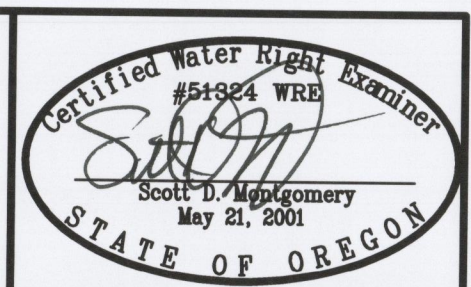
RECEIVED BY OWRD
 JUN 09 2016
 SALEM, OR

PROJECT No. 15-001

PREPARED AT THE REQUEST OF:
 ANDY ROOT
 524 HIGHWAY 20 N
 HINES, OR 97738

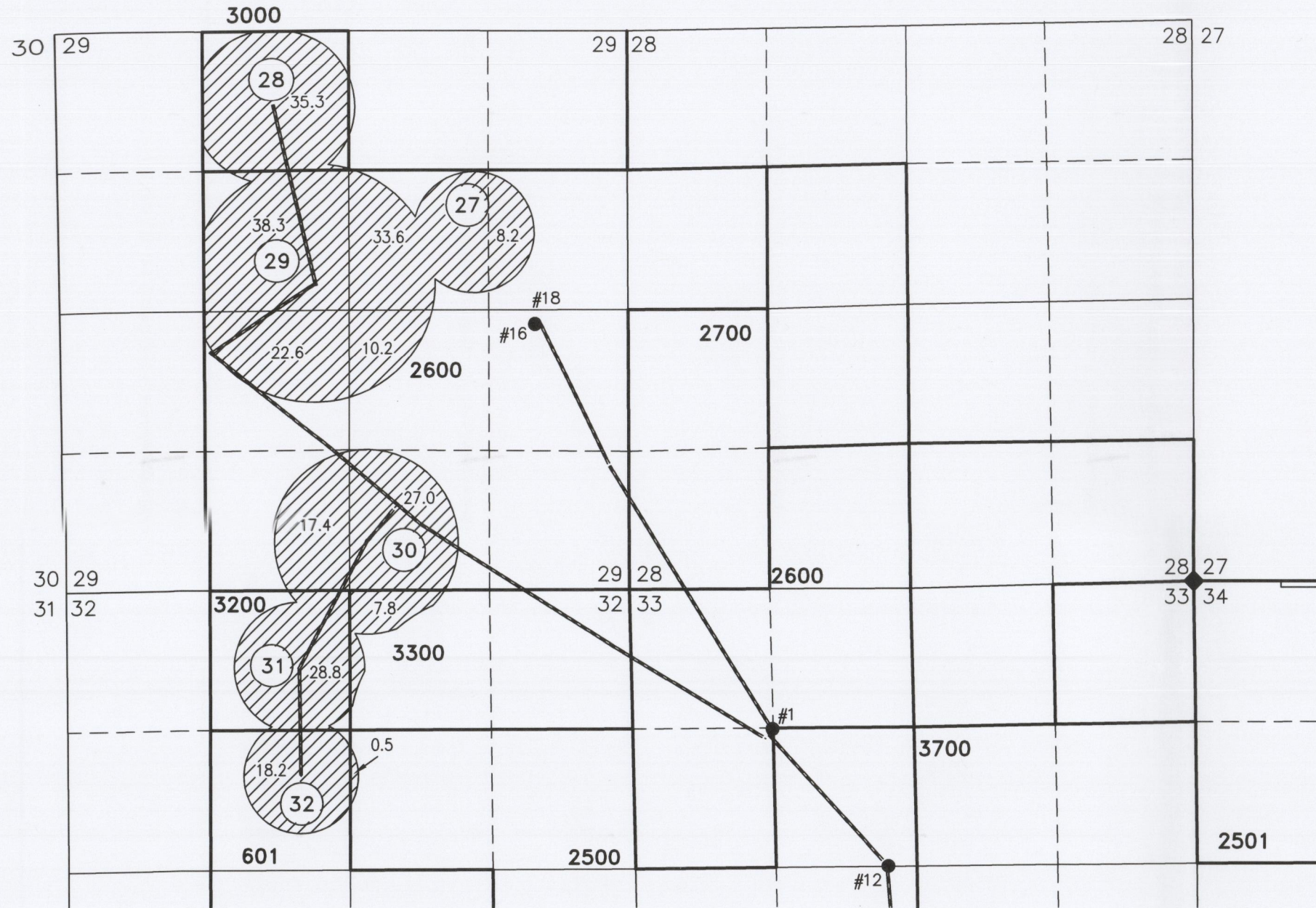
**ALL POINTS ENGINEERING
 & SURVEYING, INC.**

P.O. BOX 767
 TERREBONNE, OREGON 97760
 (541) 548-5833 PH
 Scott@APEandS.com
 www.APEandS.com



TAX LOTS 601, 2500, 2600, 3000, 3200, & 3360
 IN SECTIONS 29 & 32, TOWNSHIP 25 SOUTH, RANGE 30 EAST, W.M.
 HARNEY COUNTY, OREGON


TRANSFER MAP TO ACCOMPANY APPLICATION TO ADD POINTS OF APPROPRIATION FOR RATTLESNAKE LAND & CATTLE



- #1
WELL #1 (HARN 1094) PROPOSED
1317' SOUTH & 1355' EAST FROM THE
NW CORNER SECTION 33.
- #5
WELL #5 (HARN 51146) PROPOSED
4195' SOUTH & 2672' WEST FROM THE
NE CORNER SECTION 33.
- #7
WELL #7 (HARN 51272) AUTHORIZED
4725' SOUTH & 1877' EAST FROM THE
NW CORNER SECTION 34.
- #9
WELL #9 (HARN 51448) AUTHORIZED
4423' SOUTH & 2750' WEST FROM THE
NE CORNER SECTION 33.
- #10
WELL #10 (HARN 51765) PROPOSED
6310' SOUTH & 415' EAST FROM THE
NW CORNER SECTION 34.
- #11
WELL #11 (HARN 51760) PROPOSED
6340' SOUTH & 330' EAST FROM THE
NW CORNER SECTION 34.
- #12
WELL #12 (HARN 51817) PROPOSED
2690' SOUTH & 28900' WEST FROM THE
NE CORNER SECTION 33.
- #13
WELL #13 (HARN 51445) AUTHORIZED
6415' SOUTH & 2745' WEST FROM THE
NE CORNER SECTION 33.
- #14
WELL #14 (HARN 51871) PROPOSED
4314' SOUTH & 870' WEST FROM THE
NE CORNER SECTION 33.
- #15
WELL #15 (HARN 51970) PROPOSED
4314' SOUTH & 920' WEST FROM THE
NE CORNER SECTION 33.
- #16
WELL #16 (HARN 52121) PROPOSED
1200' NORTH & 900' WEST FROM THE S
1/16 CORNER OF SECTIONS 28 & 29.
- #17
WELL #17 (HARN 52154) PROPOSED
6300' SOUTH & 440' EAST FROM THE
NW CORNER SECTION 34.
- #18
WELL #18 (HARN 52170) PROPOSED
1200' NORTH & 850' WEST FROM THE S
1/16 CORNER OF SECTIONS 28 & 29.

— BURIED 6 OR 8 INCH STEEL PIPE

① OWNER'S PIVOT NUMBER

 247.9 ACRES PRIMARY IRRIGATION FROM G-17348, AS SHOWN


THIS MAP IS FOR THE PURPOSE OF LOCATING A WATER RIGHT ONLY AND HAS NO INTENT TO PROVIDE LEGAL DIMENSIONS OR THE LOCATION OF PROPERTY LINES.

RECEIVED BY OWRD
 JUN 19 2016
 SALEM, OR

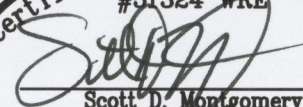
PROJECT No. 15-001

PREPARED AT THE REQUEST OF:
 ANDY ROOT
 524 HIGHWAY 20 N
 HINES, OR 97738

**ALL POINTS ENGINEERING
 & SURVEYING, INC.**



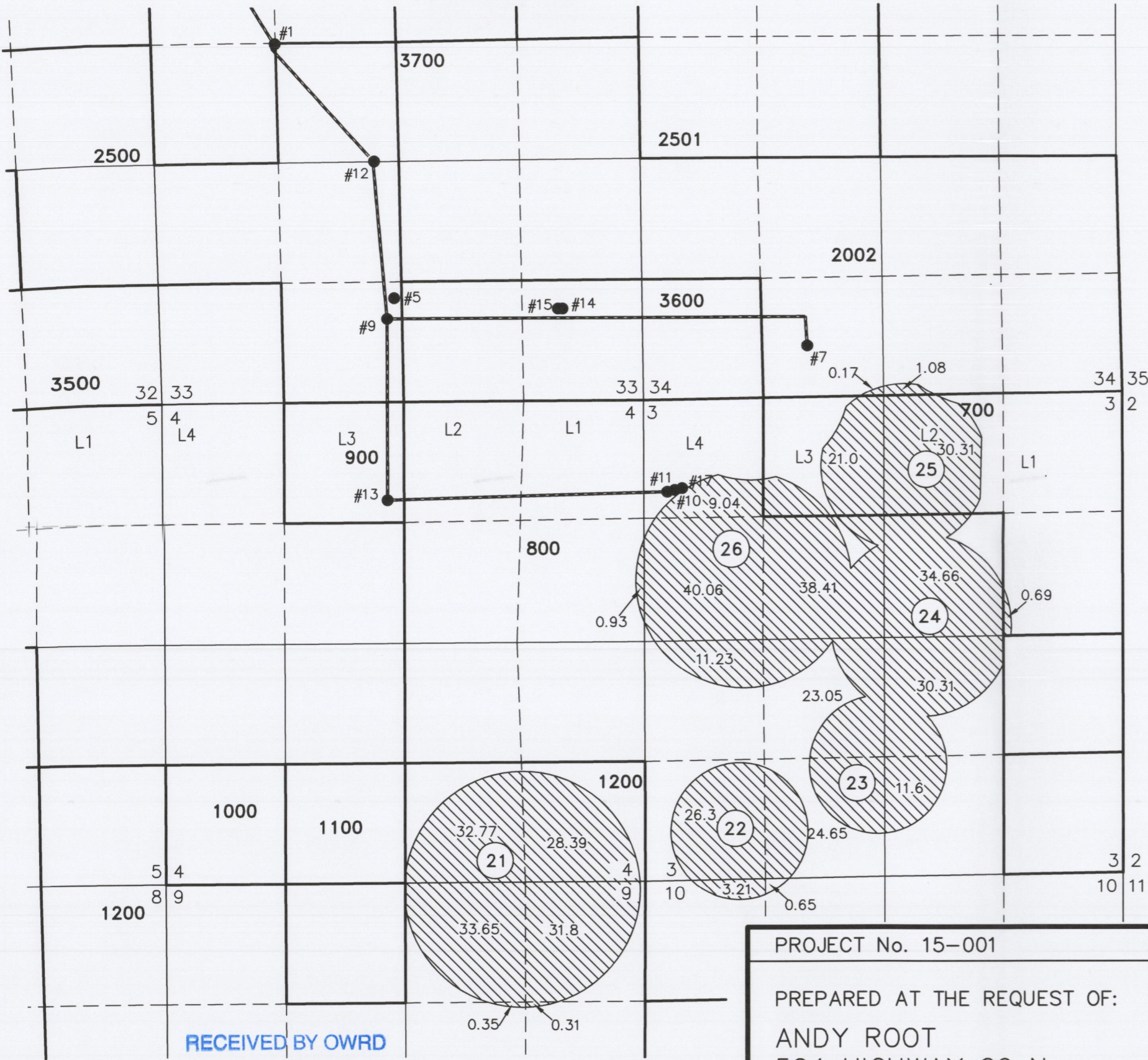
P.O. BOX 767
 TERREBONNE, OREGON 97760
 (541) 548-5833 PH
 Scott@APEandS.com
 www.APEandS.com

Certified Water Right Examiner
 #51324 WRE

 Scott D. Montgomery
 May 21, 2001
 STATE OF OREGON

RENEWAL DATE: 12/31/2016

T-12257

TAX LOT 2002
 IN SECTION 34, TOWNSHIP 25 SOUTH, RANGE 30 EAST, W.M. &
 TAX LOTS 700, 800, & 1200
 IN SECTIONS 3, 4, 9, & 10
 HARNEY COUNTY, OREGON



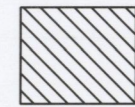
TRANSFER MAP TO ACCOMPANY APPLICATION TO ADD POINTS OF APPROPRIATION FOR RATTLESNAKE LAND & CATTLE

- #1
WELL #1 (HARN 1094) PROPOSED
1317' SOUTH & 1355' EAST FROM THE
NW CORNER SECTION 33.
- #5
WELL #5 (HARN 51146) PROPOSED
4195' SOUTH & 2672' WEST FROM THE
NE CORNER SECTION 33.
- #7
WELL #7 (HARN 51272) AUTHORIZED
4725' SOUTH & 1877' EAST FROM THE
NW CORNER SECTION 34.
- #9
WELL #9 (HARN 51448) AUTHORIZED
4423' SOUTH & 2750' WEST FROM THE
NE CORNER SECTION 33.
- #10
WELL #10 (HARN 51765) PROPOSED
6310' SOUTH & 415' EAST FROM THE
NW CORNER SECTION 34.
- #11
WELL #11 (HARN 51760) PROPOSED
6340' SOUTH & 330' EAST FROM THE
NW CORNER SECTION 34.
- #12
WELL #12 (HARN 51817) PROPOSED
2690' SOUTH & 28900' WEST FROM THE
NE CORNER SECTION 33.
- #13
WELL #13 (HARN 51445) AUTHORIZED
6415' SOUTH & 2745' WEST FROM THE
NE CORNER SECTION 33.
- #14
WELL #14 (HARN 51871) PROPOSED
4314' SOUTH & 870' WEST FROM THE
NE CORNER SECTION 33.
- #15
WELL #15 (HARN 51970) PROPOSED
4314' SOUTH & 920' WEST FROM THE
NE CORNER SECTION 33.
- #16
WELL #16 (HARN 52121) PROPOSED
1200' NORTH & 900' WEST FROM THE S
1/16 CORNER OF SECTIONS 28 & 29.
- #17
WELL #17 (HARN 52154) PROPOSED
6300' SOUTH & 440' EAST FROM THE
NW CORNER SECTION 34.
- #18
WELL #18 (HARN 52170) PROPOSED
1200' NORTH & 850' WEST FROM THE S
1/16 CORNER OF SECTIONS 28 & 29.

— BURIED 6 OR 8 INCH STEEL PIPE

① OWNER'S PIVOT NUMBER

THIS MAP IS FOR THE PURPOSE OF LOCATING A WATER RIGHT ONLY AND HAS NO INTENT TO PROVIDE LEGAL DIMENSIONS OR THE LOCATION OF PROPERTY LINES.

 434.62 ACRES PRIMARY IRRIGATION TRANSFERRED FROM PERMIT G-17127, AS SHOWN

RECEIVED BY OWRD


JUN 09 2016

SALEM, OR

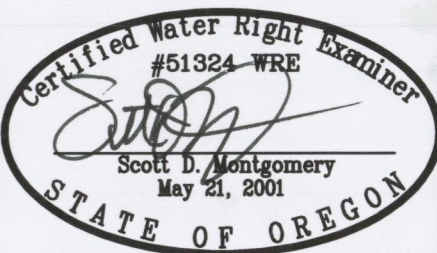
PROJECT No. 15-001

PREPARED AT THE REQUEST OF:
 ANDY ROOT
 524 HIGHWAY 20 N
 HINES, OR 97738

**ALL POINTS ENGINEERING
 & SURVEYING, INC.**



P.O. BOX 767
 TERREBONNE, OREGON 97760
 (541) 548-5833 PH
 Scott@APEandS.com
 www.APEandS.com



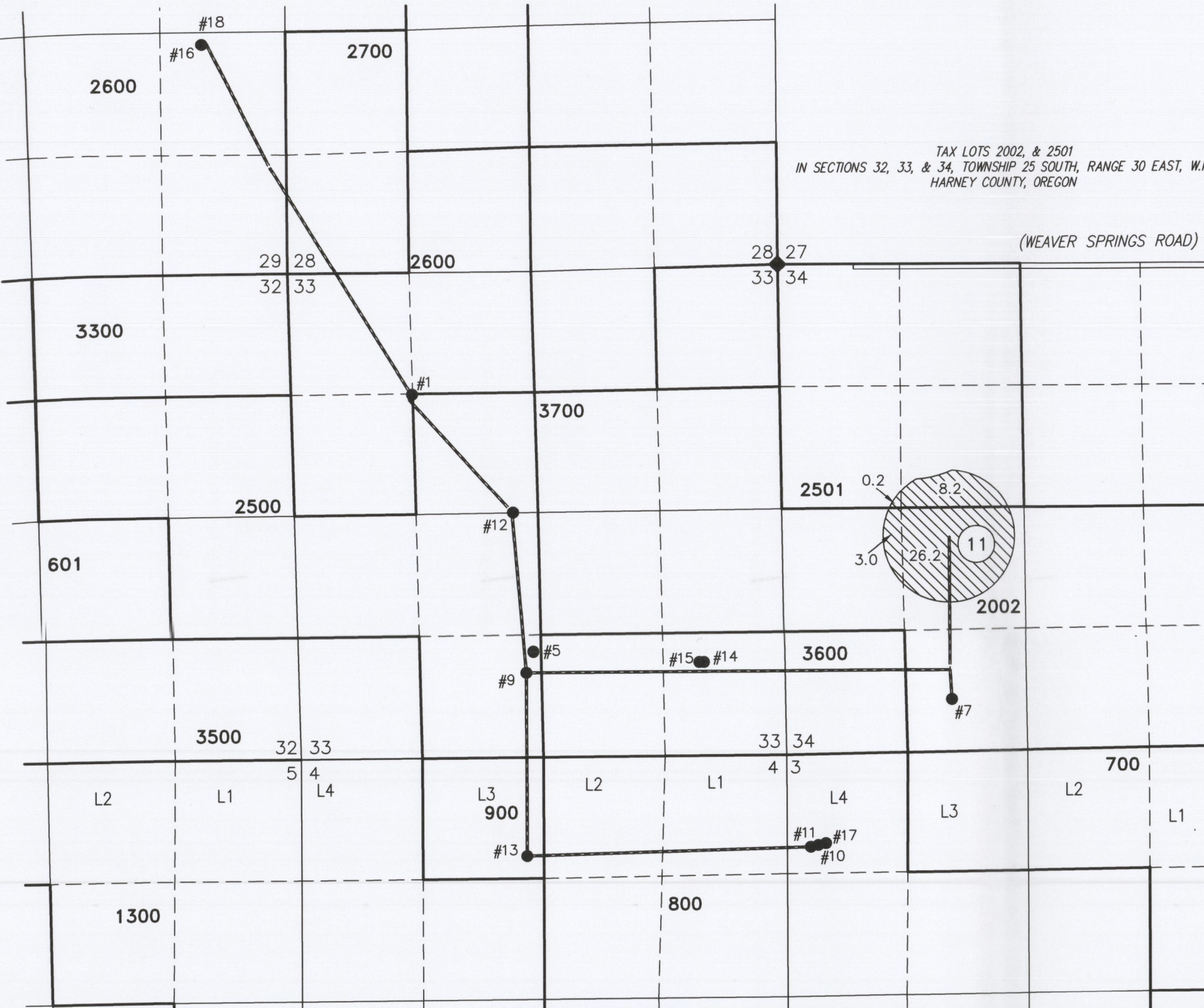
RENEWAL DATE: 12/31/2016

T-12257

TRANSFER MAP TO ACCOMPANY
APPLICATION TO ADD POINTS OF
APPROPRIATION & CHANGE PLACE OF
USE FOR
RATTLESNAKE LAND & CATTLE

TAX LOTS 2002, & 2501
IN SECTIONS 32, 33, & 34, TOWNSHIP 25 SOUTH, RANGE 30 EAST, W.M.
HARNEY COUNTY, OREGON

(WEAVER SPRINGS ROAD)



SCALE 4" = 1 MILE

- #1
WELL #1 (HARN 1094) PROPOSED
1317' SOUTH & 1355' EAST FROM THE
NW CORNER SECTION 33.
- #5
WELL #5 (HARN 51146) PROPOSED
4195' SOUTH & 2672' WEST FROM THE
NE CORNER SECTION 33.
- #7
WELL #7 (HARN 51272) AUTHORIZED
4725' SOUTH & 1877' EAST FROM THE
NW CORNER SECTION 34.
- #9
WELL #9 (HARN 51448) AUTHORIZED
4423' SOUTH & 2750' WEST FROM THE
NE CORNER SECTION 33.
- #10
WELL #10 (HARN 51765) PROPOSED
6310' SOUTH & 415' EAST FROM THE
NW CORNER SECTION 34.
- #11
WELL #11 (HARN 51760) PROPOSED
6340' SOUTH & 330' EAST FROM THE
NW CORNER SECTION 34.
- #12
WELL #12 (HARN 51817) PROPOSED
2690' SOUTH & 28900' WEST FROM THE
NE CORNER SECTION 33.
- #13
WELL #13 (HARN 51445) PROPOSED
6415' SOUTH & 2745' WEST FROM THE
NE CORNER SECTION 33.
- #14
WELL #14 (HARN 51871) PROPOSED
4314' SOUTH & 870' WEST FROM THE
NE CORNER SECTION 33.
- #15
WELL #15 (HARN 51970) PROPOSED
4314' SOUTH & 920' WEST FROM THE
NE CORNER SECTION 33.
- #16
WELL #16 (HARN 52121) PROPOSED
1200' NORTH & 900' WEST FROM THE S
1/16 CORNER OF SECTIONS 28 & 29.
- #17
WELL #17 (HARN 52154) PROPOSED
6300' SOUTH & 440' EAST FROM THE
NW CORNER SECTION 34.
- #18
WELL #18 (HARN 52170) PROPOSED
1200' NORTH & 850' WEST FROM THE S
1/16 CORNER OF SECTIONS 28 & 29.

THIS MAP IS FOR THE PURPOSE OF LOCATING A WATER
RIGHT ONLY AND HAS NO INTENT TO PROVIDE LEGAL
DIMENSIONS OR THE LOCATION OF PROPERTY LINES.

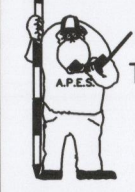
RECEIVED BY OWRD

JUN 09 2001
SALEM, OR

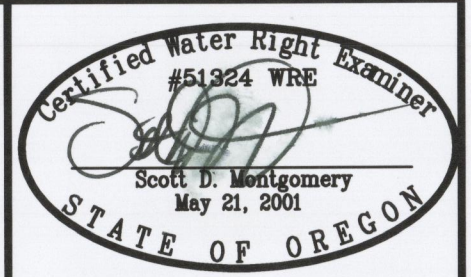
PROJECT No. 15-001

PREPARED AT THE REQUEST OF:
ANDY ROOT
524 HIGHWAY 20 N
HINES, OR 97738

ALL POINTS ENGINEERING
& SURVEYING, INC.



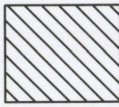
P.O. BOX 767
TERREBONNE, OREGON 97760
(541) 548-5833 PH
Scott@APEandS.com
www.APEandS.com



RENEWAL DATE: 12/31/2016

BURIED 6 OR 8 INCH STEEL PIPE

1 OWNER'S PIVOT NUMBER

 37.6 ACRES PRIMARY
IRRIGATION FROM PERMIT
G-16829 TRANSFERRED, AS
SHOWN

T-12257