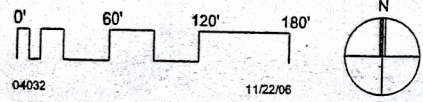


Well Plan



NE1/4 SW1/4 SECTION 35 T.01S. R.44E. W.M.
WALLOWA COUNTY
1"=100'

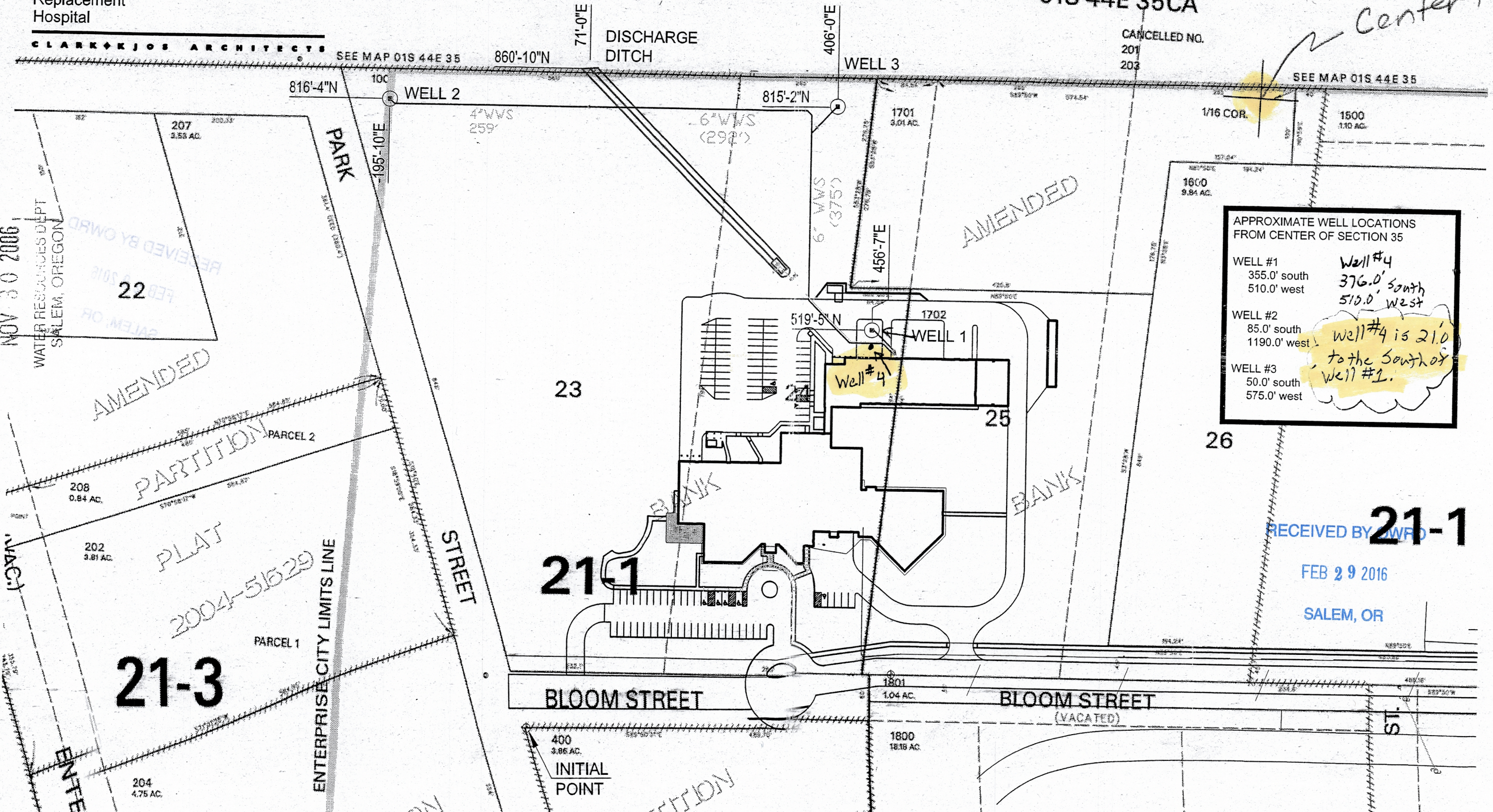
Wallowa Memorial Hospital
Replacement
Hospital

CLARK K JOS ARCHITECTS

THIS MAP WAS PREPARED FOR
ASSESSMENT PURPOSE ONLY

01S 44E 35CA

Center 1/4



APPROXIMATE WELL LOCATIONS FROM CENTER OF SECTION 35

WELL #1 355.0' south 510.0' west	Well #4 376.0' south 510.0' west
WELL #2 85.0' south 1190.0' west	Well #4 is 21.0' to the south of Well #1.
WELL #3 50.0' south 575.0' west	

RECEIVED BY **21-1**
FEB 29 2016
SALEM, OR

NOV 30 2006
WATER RESOURCES DEPT
SALEM, OREGON

AMENDED
PLAT
2004-51529
21-3
ENTERPRISE CITY LIMITS LINE

21-1

26

BLOOM STREET

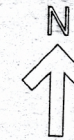
BLOOM STREET (VACATED)

INITIAL POINT

WALLOWA MEMORIAL HOSPITAL GEOTHERMAL WELL LOCATIONS

NE 1/4 SW 1/4 SECTION 35 T.01S, R. 44E. W.M., TL 100

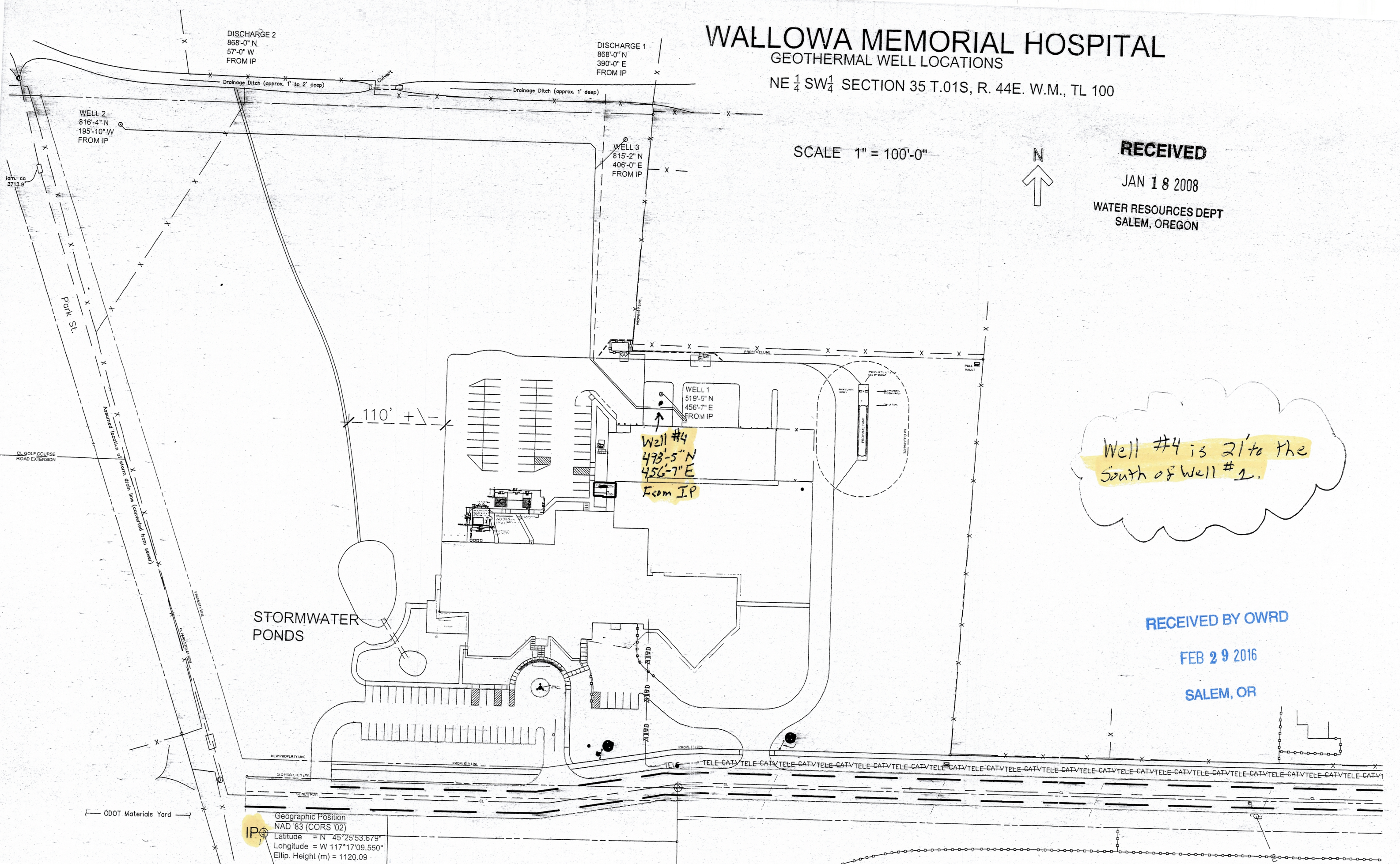
SCALE 1" = 100'-0"



RECEIVED

JAN 18 2008

WATER RESOURCES DEPT
SALEM, OREGON



Well #4 is 21' to the South of Well #1.

RECEIVED BY OWRD

FEB 29 2016

SALEM, OR

Geographic Position
NAD '83 (CORS '02)
Latitude = N 45°25'53.679"
Longitude = W 117°17'09.550"
Ellip. Height (m) = 1120.09

Race Track