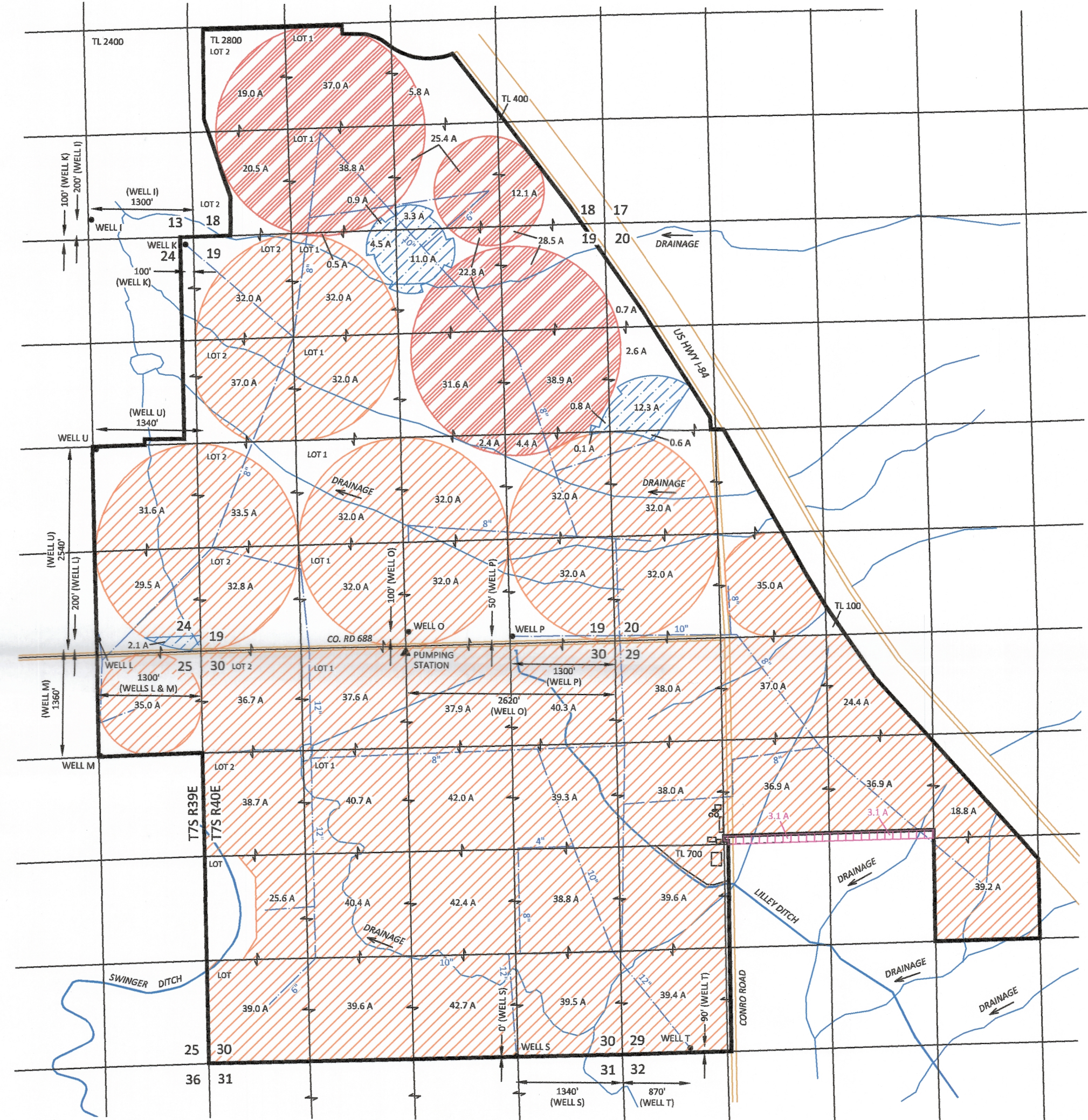
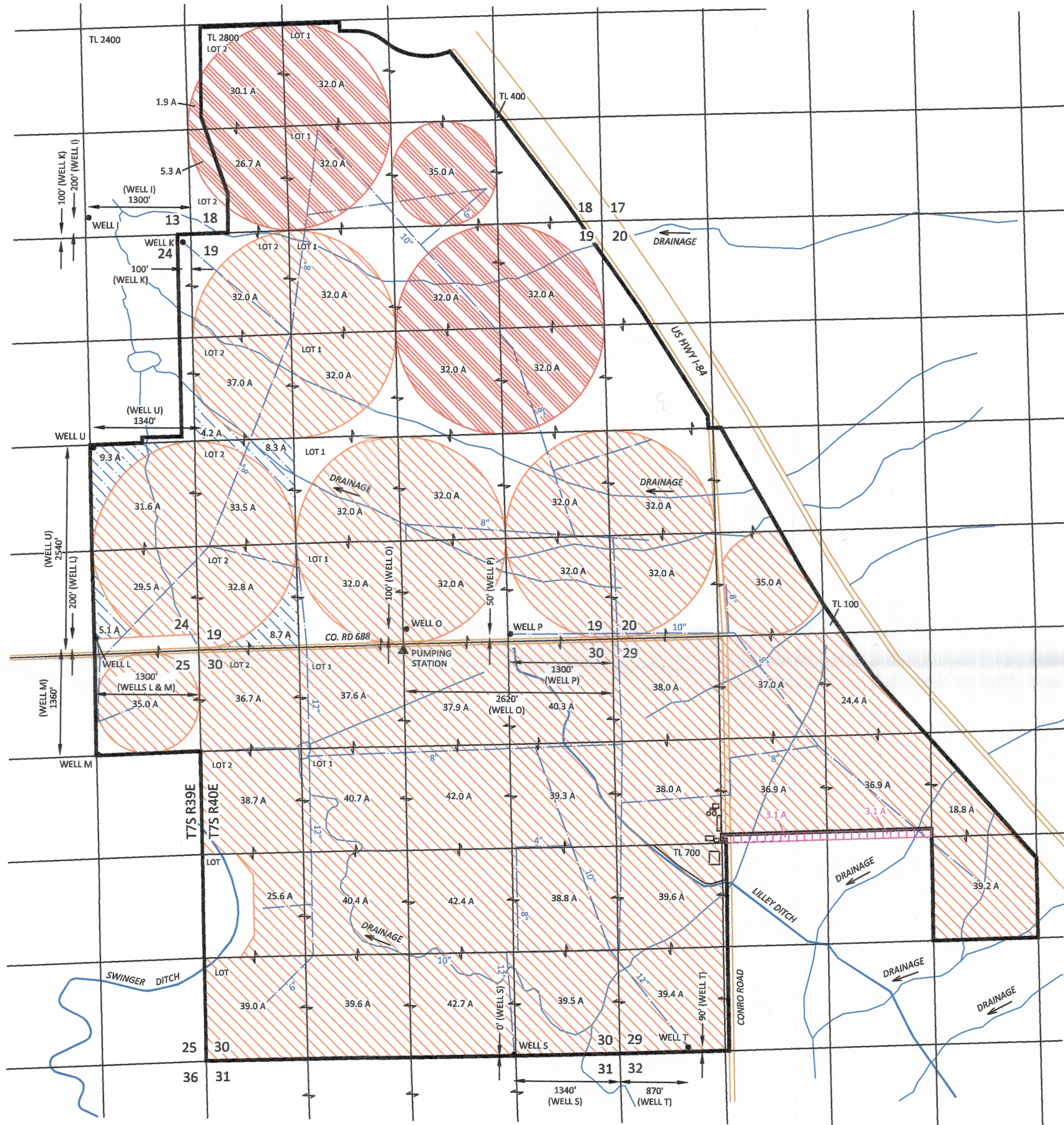


RECEIVED  
MAR 01 2016  
OWRD

Sections 24 & 25, T7S, R39E and Sections 18, 19, 20, 29 & 30, T7S, R40E, W.M.  
Baker County  
APPLICATION G-15977, PERMIT G-15710  
PERMIT AMENDMENT MAP  
McEst RANCHES, LLC

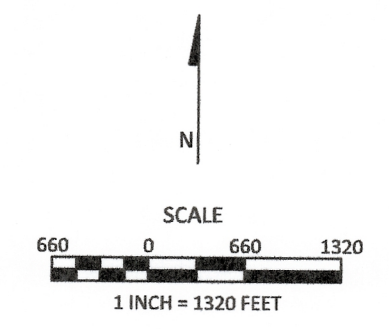
FROM MAP

TO MAP



EXPLANATION

FROM LANDS (WELLS I,K,L,M,O,P)	FROM LANDS (WELLS I,K,L,M,O,P)	FROM LANDS (WELLS I,K,L,M,O,P)	TO LANDS (WELLS I,K,L,M,O,P,S,T,U)	TO LANDS (WELLS I,K,L,M,O,P,S,T,U)	TO LANDS (WELLS I,K,L,M,O,P)	REMAINING LANDS (WELLS I,K,L,M,O,P)
SUPPLEMENTAL IRRIGATION PRIORITY: 4/4/2003 1555.8 AC	SUPPLEMENTAL IRRIGATION PRIORITY: 4/4/2003 291.0 AC	SUPPLEMENTAL IRRIGATION PRIORITY: 4/4/2003 35.6 AC	SUPPLEMENTAL IRRIGATION PRIORITY: 4/4/2003 1555.8 AC	SUPPLEMENTAL IRRIGATION PRIORITY: 4/4/2003 291.0 AC	SUPPLEMENTAL IRRIGATION PRIORITY: 4/4/2003 35.6 AC	SUPPLEMENTAL IRRIGATION PRIORITY: 4/4/2003 6.2 AC
WELL						
PIPELINE						



SKOOKUM  
WATER ASSOCIATES INC

P.O. BOX 80174  
PORTLAND, OR 97280  
(503) 319-8926

FIGURE 1  
February 5, 2016

This map is not intended to provide legal dimensions or locations of property ownership lines