

RECEIVED OCT 08 2014

AMENDED MAP (4/28/14) FOR TRANSFER T 11786

WATER RIGHT TRANSFER APPLICATION MAP

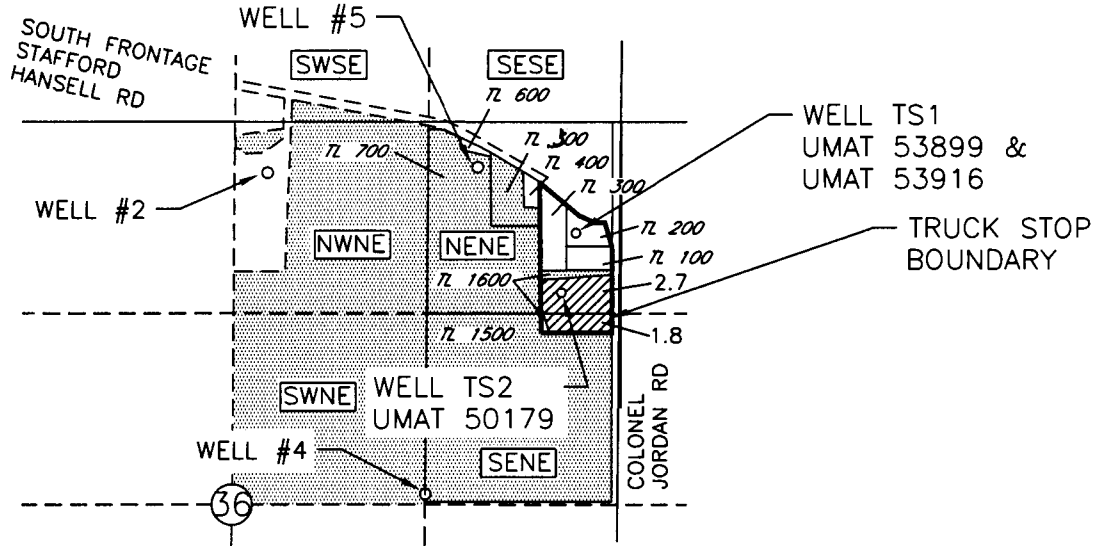
FOR A PORTION OF CERTIFICATE 85536 CHANGING 4.5 ACRES OF IRRIGATION TO COMMERCIAL USE ASSOCIATED WITH A TRUCK STOP AND NEW P.O.A.s

FOR LADDI SINGH

UMATILLA CO

T4N, R27E WM

RECEIVED OCT 08 2014



- AREA OF WATER RIGHT BEING TRANSFERRED TO COMMERCIAL USE ASSOCIATED WITH A TRUCK STOP
- AREA OF WATER RIGHT NOT INVOLVED IN THIS TRANSFER

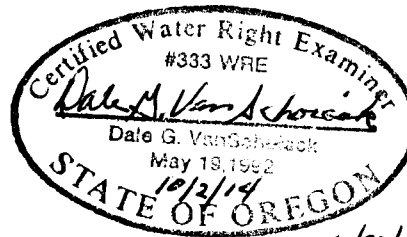
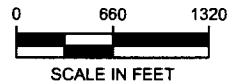
AUTHORIZED P.O.A.s

WELL #5 LOCATED 270'S AND 990'W FROM THE NE CORNER OF SEC 36

PROPOSED P.O.A.s

WELL TS1 LOCATED 1875'N AND 300'W FROM THE E 1/4 CORNER OF SEC 36

WELL TS2 LOCATED 1460'N AND 380'W FROM THE E 1/4 CORNER OF SEC 36



Renews 6/30/16

NOTE: THE PURPOSE OF THIS MAP IS TO IDENTIFY THE APPROXIMATE LOCATION OF THE WATER RIGHT. IT IS NOT INTENDED TO PROVIDE INFORMATION RELATIVE TO THE LOCATION OF PROPERTY OWNERSHIP BOUNDARY LINES.

