

RECEIVED BY OWRD

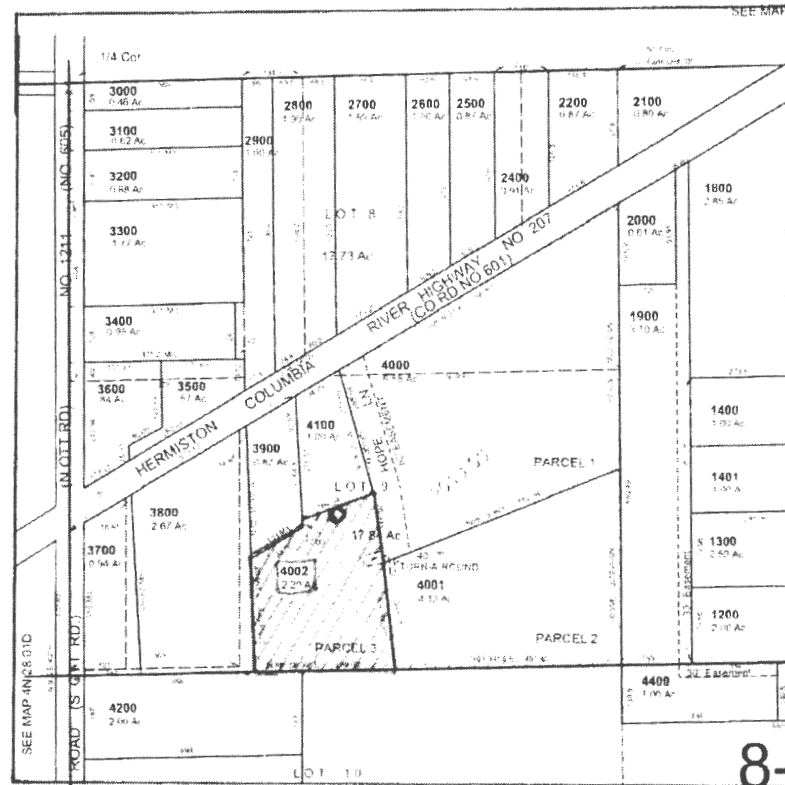
MAR 31 2016

SALEM, OR

# T4N, R29E Section 6 Tax Lot 4002



1" = 400'



○ =UMAT57236



=Area served by APOA

Well located approx. 950' South and 580' West from the West 1/4 corner of section 6  
Also described as Lat 45.85388548, Long -119.24622380 Datum WGS84

I 12326