


NORTH

T14S, R14E


Southeast Corner Marker,
T14S, R14E Section 20

Main line that feeds
wheel lines in both
directions.

POD - 45 feet North, 1,465 feet
West of the Southeast corner of
T14S, R14E Section 20


Transfer ON
 Cert 83850 - BOR
 SWSE 10.0 acres
 SESW 7.0 acres
 Section 20
 NENW 1.4 acres
 NWNE 1.6 acres
 Section 29

Scale 1" = 1,000 feet


Redescription
 Cert 11698 - 1929
 SESE 18.0 acres
 SWSE 12.0 acres
 Section 20

RECEIVED

FEB 24 2010

WATER RESOURCES DEPT
 SALEM, OREGON

Butler Ranch Inc. "On" Map

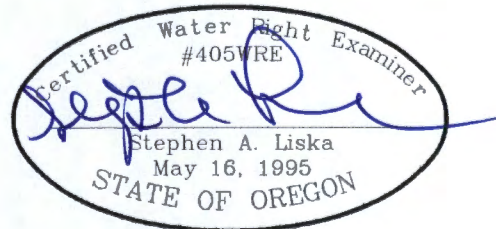
 Approximate Tax Lot Boundaries  Approximate POD Location  Corner Marker

T14S R14E Section 20 Tax Lot 100 & Section 29 Tax Lot 205

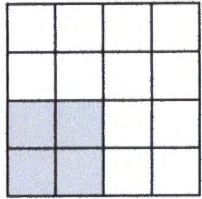
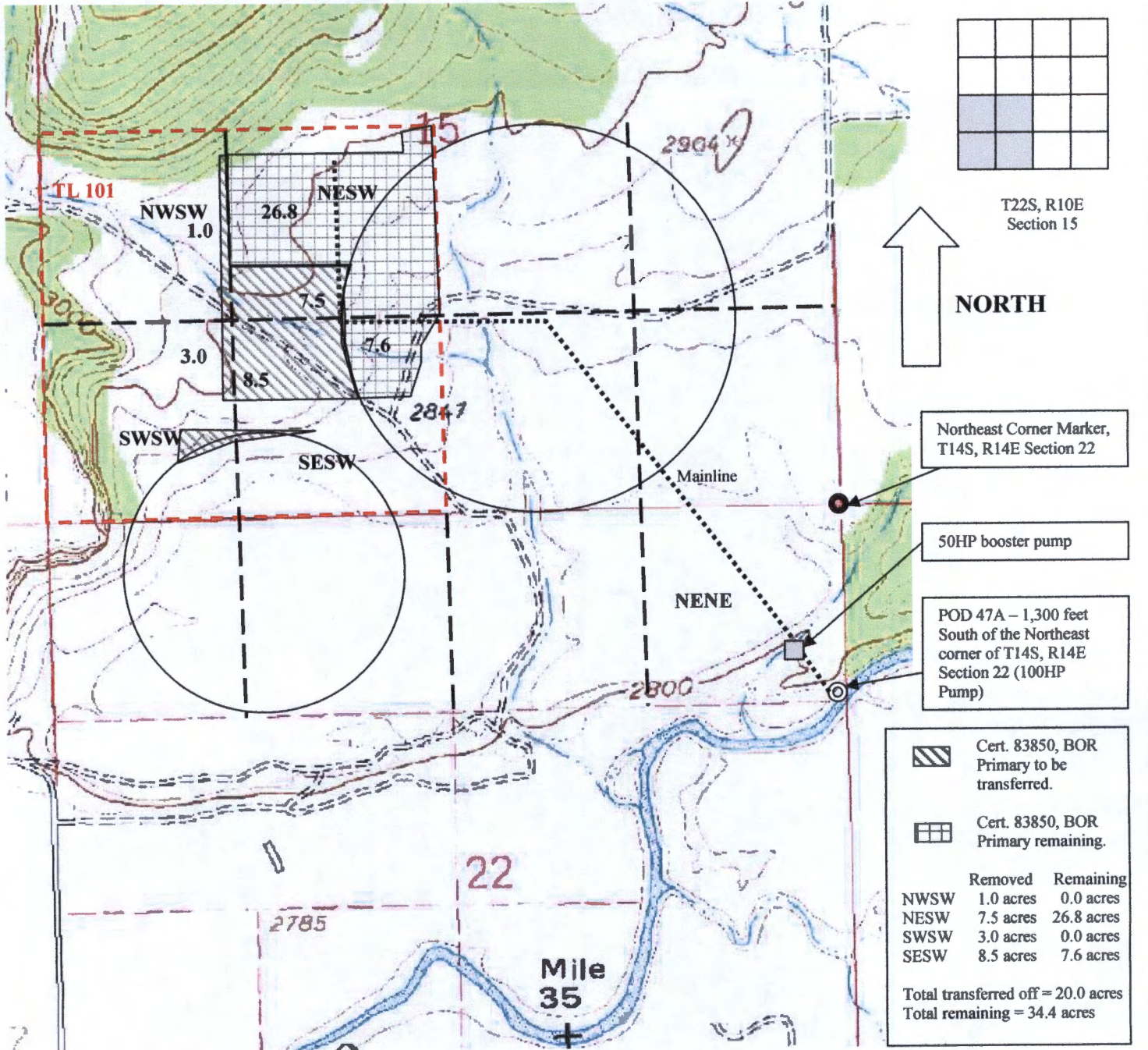
John A. Short

P.O. Box 1830
 Bend, OR 97709
 541-408-7415
johnshort@usa.com

www.oregonwater.us
 February 10, 2010



T 11023



T22S, R10E
Section 15



NORTH

Northeast Corner Marker,
T14S, R14E Section 22

50HP booster pump

POD 47A - 1,300 feet
South of the Northeast
corner of T14S, R14E
Section 22 (100HP
Pump)

	Cert. 83850, BOR Primary to be transferred.
	Cert. 83850, BOR Primary remaining.
	Removed Remaining
NWSW	1.0 acres 0.0 acres
NESW	7.5 acres 26.8 acres
SWSW	3.0 acres 0.0 acres
SESW	8.5 acres 7.6 acres
Total transferred off = 20.0 acres	
Total remaining = 34.4 acres	

Butler Ranch Inc. "Off" Map

Approximate Tax Lot Boundaries Approximate POD Location Corner Marker

T14S R14E Section 15 Tax Lot 101

Scale 1" = 1,000 feet

John A. Short
P.O. Box 1830
Bend, OR 97709
541-408-7415
johnshort@usa.com
www.oregonwater.us
February 19, 2010

T 11023

RECEIVED

FEB 24 2010

WATER RESOURCES DEPT
SALEM, OREGON

