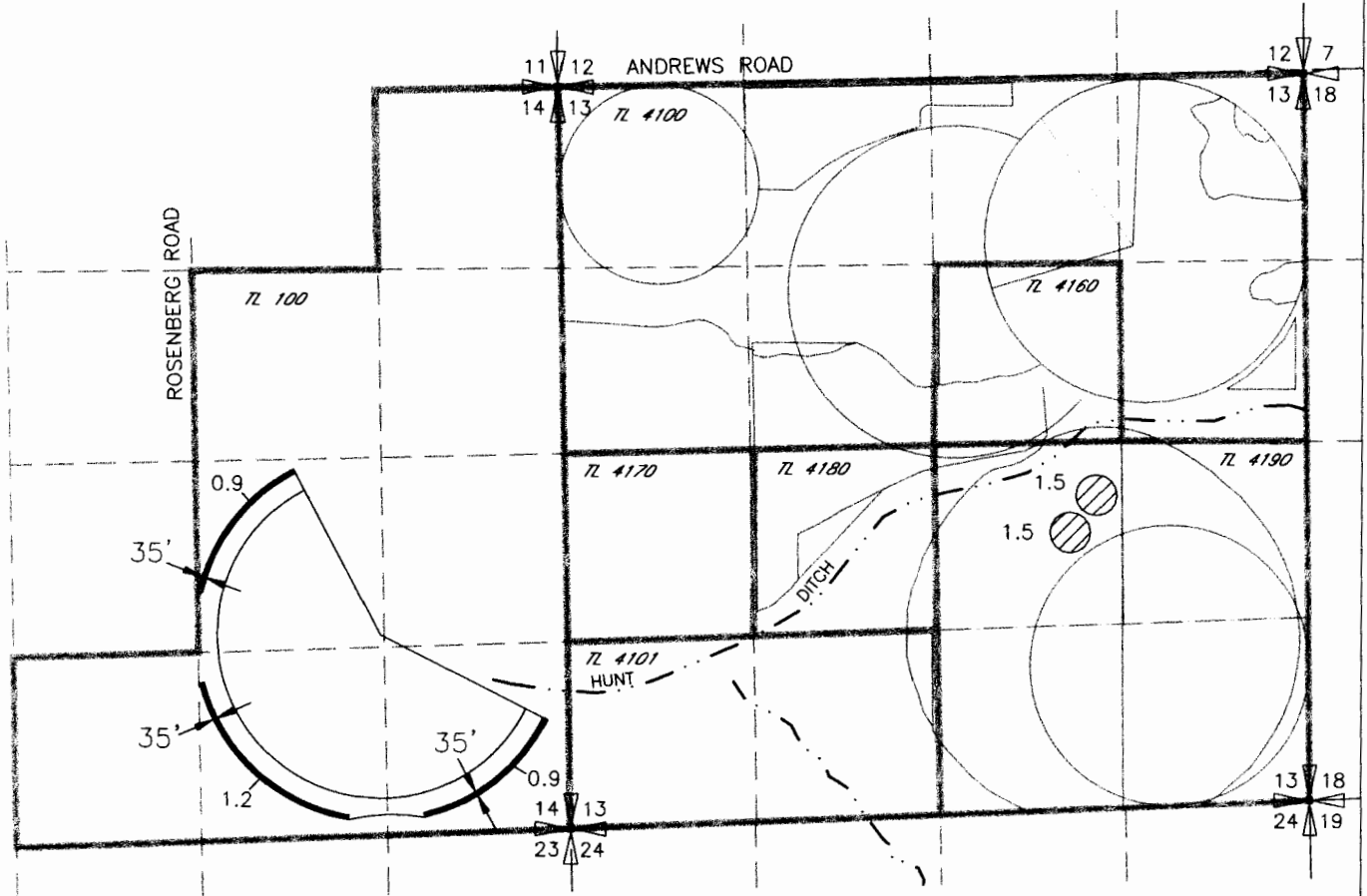


2016  
 WESTLAND IRRIGATION DISTRICT  
 540.580 TRANSFER MAP FOR  
 DOUBLE M RANCH INC  
 TOWNSHIP 3 NORTH RANGE 28 E WM



FROM



CERTIFICATE 76715 AND  
 SUPPLEMENTAL CERTIFICATE 79439

TO



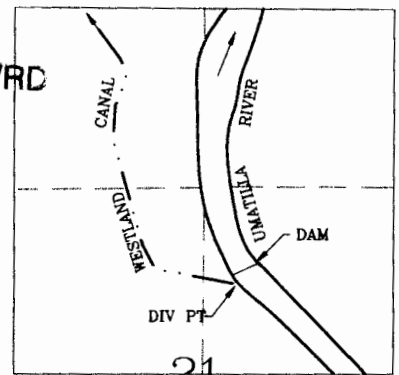
RECEIVED BY OWRD

JUN 20 2016

SALEM, OR

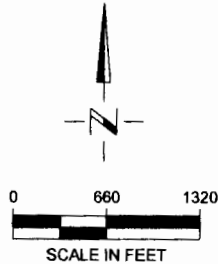
CERTIFICATE 76715 AND CERTIFICATE  
 79439 BOTH CURRENTLY DESCRIBE 38.8  
 ACRES IN THE NW SE OF SECTION 13  
 WHICH IS THE AREA RECEIVING THE 3.0  
 ACRES UNDER THIS TRANSFER. THE 38.8  
 ACRES WERE RELOCATED WITH TRANSFER  
 T-8865 IN 2002

T.3N., R.29E., W.M.



DIV PT LCT N.76°45'56"E. 2913.19'  
 FROM W.1/4 COR. SEC 21

T 12413



NOTE:  
 THE PURPOSE OF THIS MAP IS TO IDENTIFY THE APPROXIMATE LOCATION  
 OF THE WATER RIGHT. IT IS NOT INTENDED TO PROVIDE INFORMATION  
 RELATIVE TO THE LOCATION OF PROPERTY OWNERSHIP BOUNDARY LINES.

DRAWING: \\kwwfiles\public\Project\30-08-016 - Porfily Water Rights Consulting\00 Misc Engineering\Cad\052\30-08-016 WEST TR.dwg  
 PRINTED BY: rwillard on 06/15/16 08:45 AM

